



CONTINENTAL GIN COMPLEX  
HISTORIC DISTRICT  
BIRMINGHAM, ALABAMA

*Jefferson Co.*

Photograph by:  
Randolph C. Marks  
May, 1980

3205 Sterling Road  
Birmingham, Alabama  
35213

# 1/31



CONTINENTAL GIN COMPLEX  
HISTORIC DISTRICT  
BIRMINGHAM, ALABAMA

*Jefferson Co -*

Photograph by:

Randolph C. Marks

May, 1980

**OCT 23 1980**

3205 Sterling Road  
Birmingham, Alabama

35213

*#2/30*





FLEA MARKET JUNCTION

CONTINENTAL GIN COMPLEX  
HISTORIC DISTRICT  
BIRMINGHAM, ALABAMA

*Jefferson Co.*

Photograph by:

Randolph C. Marks

May, 1980

**OCT 23 1980**

3205 Sterling Road  
Birmingham, Alabama

35213

*#3/30*



CONTINENTAL GIN COMPLEX  
HISTORIC DISTRICT  
BIRMINGHAM, ALABAMA

*Jefferson Co*  
Photograph by:  
Randolph C. Marks  
May, 1980

3205 Sterling Road  
Birmingham, Alabama  
35213

*#4/30*

OCT 23 1980





HEM BULGIA



CONTINENTAL GIN COMPLEX  
HISTORIC DISTRICT  
BIRMINGHAM, ALABAMA

*Jefferson Co.*

Photograph by:  
Randolph C. Marks  
May, 1980

3205 Sterling Road  
Birmingham, Alabama

25712

OCT 23 1980

NOV 20 1980

# 5/31



HILL BUILDING

CONTINENTAL GIN COMPLEX  
HISTORIC DISTRICT  
BIRMINGHAM, ALABAMA

*Jefferson Co.*

Photograph by:  
Randolph C. Marks  
May, 1980

**OCT 23 1980**

3205 Sterling Road  
Birmingham, Alabama  
35213

*#6/30*

NOV 20 1980



CONTINENTAL GIN COMPLEX  
HISTORIC DISTRICT

BIRMINGHAM, ALABAMA

*Jefferson Co.*

Photograph by:

Randolph C. Marks

May, 1980

**OCT 23 1980**

3205 Sterling Road  
Birmingham, Alabama

35213

# 7/30

NOV 20 1980  
0861 07 AM





CONTINENTAL GIN COMPLEX  
HISTORIC DISTRICT  
BIRMINGHAM, ALABAMA

*Jefferson Co.*

Photograph by:

Randolph C. Marks

May, 1980

**OCT 23 1980**

3205 Sterling Road  
Birmingham, Alabama  
35213

*# 8/30*

NOV 20 1980



CONTINENTAL GIN COMPLEX  
HISTORIC DISTRICT  
BIRMINGHAM, ALABAMA

*Jefferson Co.*

Photograph by:  
Randolph C. Marks

May, 1980

**OCT 23 1980**

3205 Sterling Road  
Birmingham, Alabama

35213

*#9/30*





CONTINENTAL GIN COMPLEX  
HISTORIC DISTRICT  
BIRMINGHAM, ALABAMA

*Jefferson Co.*

Photograph by:  
Randolph C. Marks  
May, 1980

3205 Sterling Road  
Birmingham, Alabama  
35213

#10/30 OCT 23 1980

0001 07 1000



NOT AN  
EXIT

CONTINENTAL GIN COMPLEX  
HISTORIC DISTRICT  
BIRMINGHAM, ALABAMA

*Jefferson Co.*

Photograph by: **OCT 23 1980**

Randolph C. Marks  
May, 1980

3205 Sterling Road  
Birmingham, Alabama  
35213

*#11/30*



Small rectangular sign above the windows.

ALL TRUCKS  
PLEASE USE MAIN

ALL TRUCKS  
←

SMALL SIGN

NOV 20 1980

CONTINENTAL GIN COMPLEX  
HISTORIC DISTRICT  
BIRMINGHAM, ALABAMA

*Jefferson Co.*

Photograph by:  
Randolph C. Marks  
May, 1980

OCT 23 1980

3205 Sterling Road  
Birmingham, Alabama  
35213

#12/38





CONTINENTAL GIN COMPLEX  
HISTORIC DISTRICT  
BIRMINGHAM, ALABAMA

*Jefferson Co.*

Photograph by:

Randolph C. Marks

May, 1980

3205 Sterling Road  
Birmingham, Alabama

35213

OCT 23 1980

#13/30

NOV 20 1980



CONTINENTAL GIN COMPLEX  
HISTORIC DISTRICT  
BIRMINGHAM, ALABAMA

*Jefferson Co.*

Photograph by:  
Randolph C. Marks  
May, 1980

3205 Sterling Road  
Birmingham, Alabama  
35213

*#14/30*

**OCT 23 1980**

NOV 20 1980





CONTINENTAL GIN COMPLEX  
HISTORIC DISTRICT  
BIRMINGHAM, ALABAMA

*Jefferson Co.*

Photograph by:

Randolph C. Marks

May, 1980

**OCT 23 1980**

3205 Sterling Road  
Birmingham, Alabama

35213

NOV 20 1980

#15/30





CONTINENTAL GIN COMPLEX  
HISTORIC DISTRICT  
BIRMINGHAM, ALABAMA

*Jefferson Co.*  
Photograph by:  
Randolph C. Marks  
May, 1980

**OCT 23 1980**

3205 Sterling Road  
Birmingham, Alabama  
35213

*#16/50*

NOV 20 1980



CONTINENTAL GIN COMPLEX  
HISTORIC DISTRICT  
BIRMINGHAM, ALABAMA

*Jefferson Co.*

Photograph by:

Randolph C. Marks

May, 1980

NOV 20 1980

3205 Sterling Road  
Birmingham, Alabama  
35213

#17

OCT 23 1980



CONTINENTAL GIN COMPLEX  
HISTORIC DISTRICT  
BIRMINGHAM, ALABAMA

*Jefferson Co.*

Photograph by:

Randolph C. Marks

May, 1980

NOV 20 1980

3205 Sterling Road  
Birmingham, Alabama

OCT 35213





CONTINENTAL GIN COMPLEX  
HISTORIC DISTRICT  
BIRMINGHAM, ALABAMA

*Jefferson Co.*

Photograph by:  
Randolph C. Marks  
May, 1980

3205 Sterling Road  
Birmingham, Alabama

35213

*#19*  
NOV 20 1980  
OCT 23 1980



A  
16

CONTINENTAL GIN COMPLEX  
HISTORIC DISTRICT  
BIRMINGHAM, ALABAMA

*Jefferson Co.*

Photograph by:

Randolph C. Marks

May, 1980

NOV 20 1980

3205 Sterling Road  
Birmingham, Alabama  
35213

*A 20/3 x*

OCT 23 1980

047-10-5-3100



Parts Plus  
Distribution Center





CONTINENTAL GIN COMPLEX  
HISTORIC DISTRICT  
BIRMINGHAM, ALABAMA

*Jefferson Co.*  
Photograph by:  
Randolph C. Marks  
May, 1980

NOV 20 1980

3205 Sterling Road  
Birmingham, Alabama  
35213

*#21/3*  
OCT 23 1980



CONTINENTAL GIN COMPLEX  
HISTORIC DISTRICT  
BIRMINGHAM, ALABAMA

*Jefferson Co*  
Photograph by:  
Randolph C. Marks

May, 1980

NOV 20 1980  
OCT 23 1980

3205 Sterling Road  
Birmingham, Alabama

#22/30  
35213



CONTINENTAL GIN COMPLEX  
HISTORIC DISTRICT  
BIRMINGHAM, ALABAMA

*Jefferson Co.*  
Photograph by:

Randolph C. Marks

May, 1980

NOV 20

3205 Sterling Road  
Birmingham, Alabama  
35213

#23/31

OCT 23 1980





CONTINENTAL GIN COMPLEX  
HISTORIC DISTRICT  
BIRMINGHAM, ALABAMA

*Jefferson Co*  
Photograph by:

Randolph C. Marks  
May, 1980

NOV 20 1980

3205 Sterling Road  
Birmingham, Alabama  
35213

#24/30

OCT 23 1980



BLK A  
DOORWAY

JOBBER SERVICE

CONTINENTAL GIN COMPLEX  
HISTORIC DISTRICT  
BIRMINGHAM, ALABAMA

*Jefferson Co -*  
Photograph by:  
Randolph C. Marks  
May, 1980

NOV 20 1980

3205 Sterling Road  
Birmingham, Alabama  
35213

#25/10  
OCT 23 1980





CONTINENTAL GIN COMPLEX  
HISTORIC DISTRICT  
BIRMINGHAM, ALABAMA

*Jefferson Co -*  
Photograph by:  
Randolph C. Marks  
May, 1980

3205 Sterling Road  
Birmingham, Alabama

*#72/30*  
OCT 23 1980  
35213



CONTINENTAL GIN COMPLEX  
HISTORIC DISTRICT  
BIRMINGHAM, ALABAMA

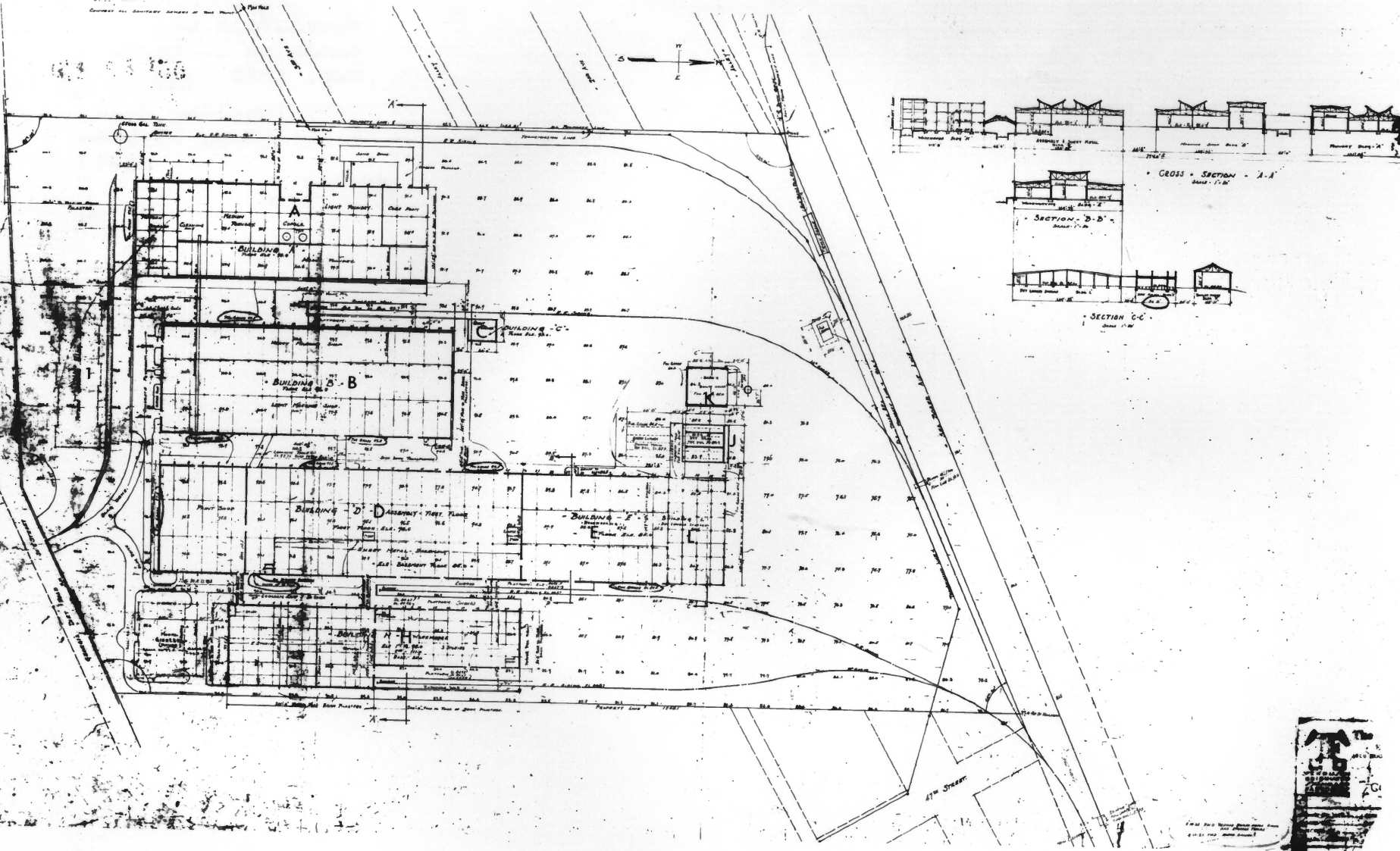
*Jefferson Co.*  
Photograph by:  
Randolph C. Marks  
May, 1980

3205 Sterling Road  
Birmingham, Alabama  
35213

*7/27/80*

OCT 23 1980

63 106



CONTINENTAL GIN COMPLEX  
HISTORIC DISTRICT  
BIRMINGHAM, ALABAMA

*Jefferson Co.*

Photograph by:

Randolph C. Marks

May, 1980

**OCT 23 1980**

3205 Sterling Road  
Birmingham, Alabama  
35213

*#28/30*



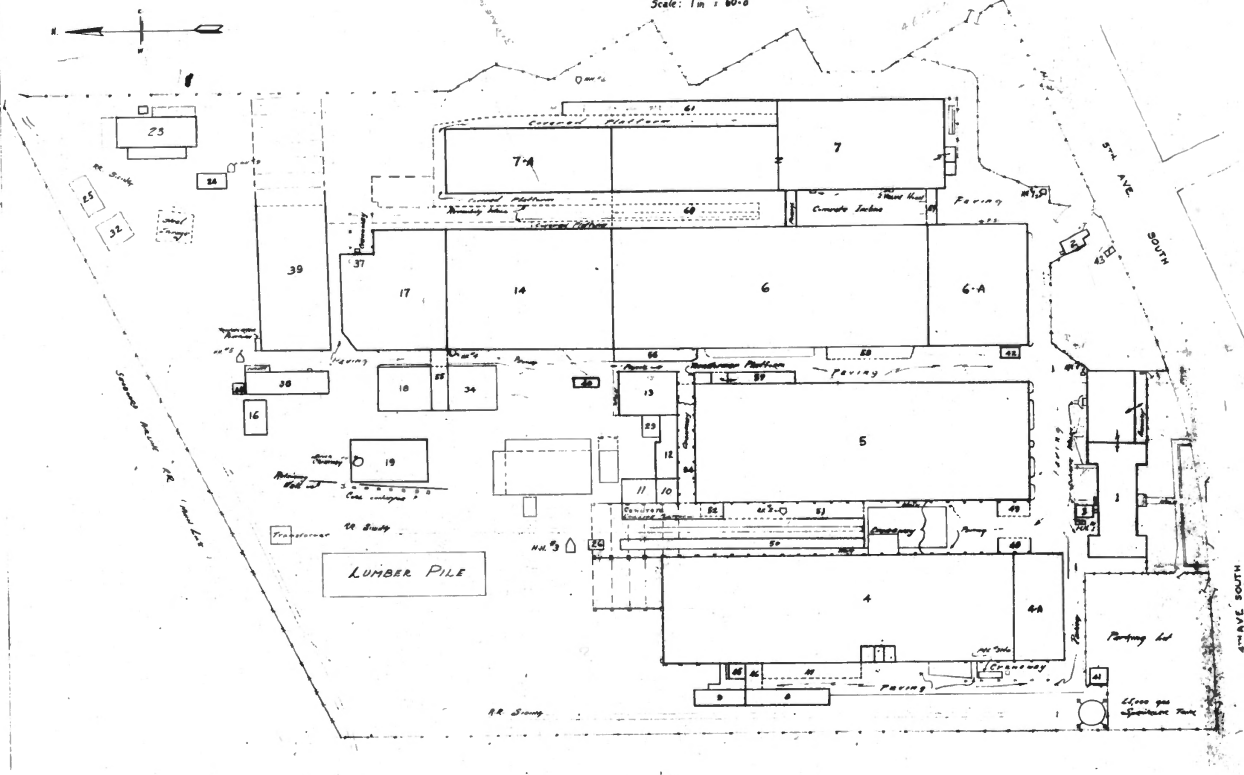
# CONTINENTAL GIN COMPANY

Birmingham, Ala.

Scale: 1 in = 60'-0"

## LEGEND

- | NO. | DESCRIPTION                               |
|-----|---|
| 1   | GENERAL OFFICE                            |
| 2   | GATE HOUSE                                |
| 3   | MACHINERY ROOM - AIR COND.                |
| 4   | FOUNDRY                                   |
| 5A  | PATTERN SHOP - LITTON; STORAGE - LAB.     |
| 5   | PICKING SHOP                              |
| 6   | ASSEMBLY SHOP                             |
| 6A  | PAINT SHOP                                |
| 7   | WAREHOUSE                                 |
| 7A  | WAREHOUSE AND SHIPPING                    |
| 8   | SAND STORAGE AND FOUNDRY SUPPLIES         |
| 9   | COPE PILING                               |
| 10  | STEEL BAR AND PIPE STORAGE                |
| 11  | PIPE STORAGE                              |
| 12  | STEEL BAR STORAGE                         |
| 13  | BLACKSMITH, HEAT-TREATING AND LABBIT ROOM |
| 14  | FABRICATING SHOP                          |
| 15  |   |
| 16  | GARAGE                                    |
| 17  | FABRICATING AND SHEET STEEL STORAGE       |
| 18  | DRY ROOM                                  |
| 19  | BOILER HOUSE AND ENGINE ROOM              |
| 20  |   |
| 21  |   |
| 22  | OLD GIN HOUSE - USED FOR STORAGE          |
| 23  | EXPERIMENTAL GIN BUILDING                 |
| 24  | SEED HOUSE                                |
| 25  | COTTON HOUSE                              |
| 26  | FUEL OIL PUMP HOUSE                       |
| 27  | COOLING TOWER                             |
| 28  | WATER PUMP HOUSE                          |
| 29  | COOLING TOWER SUMP.                       |
| 30  |   |
| 31  |   |
| 32  | STORAGE HOUSE                             |
| 33  |   |
| 34  | PLANING MILL                              |
| 35  |   |
| 36  |   |
| 37  | PICKLING PLANT                            |
| 38  | HEAVY STEEL FABRICATING                   |
| 39  |   |
| 40  |   |
| 41  | GARAGE                                    |
| 42  | ELDER HOUSE                               |
| 43  |   |
| 44  | BATH HOUSE                                |
| 45  | FOUNDRY STORAGE                           |
| 46  | SHED                                      |
| 47  | SAND BINS                                 |
| 48  | SHED - CASTING STORAGE                    |
| 49  | SHED - CASTING STORAGE                    |
| 50  | SCRAP BINS - FOUNDRY FLASK                |
| 51  | SHED STORAGE                              |
| 52  | STEEL RACK                                |
| 53  |   |
| 54  |   |
| 55  |   |
| 56  | FURNACE ROOM                              |
| 57  | ELECTRICAL SHOP                           |
| 58  | SHED - STORAGE                            |
| 59  |   |
| 60  | SHED - LOADING DOCK                       |
| 61  | SHED - STORAGE                            |



CONTINENTAL GIN  
 BIRMINGHAM, ALA.  
 1917  
 1918  
 1919  
 1920  
 1921  
 1922  
 1923  
 1924  
 1925  
 1926  
 1927  
 1928  
 1929  
 1930  
 1931  
 1932  
 1933  
 1934  
 1935  
 1936  
 1937  
 1938  
 1939  
 1940  
 1941  
 1942  
 1943  
 1944  
 1945  
 1946  
 1947  
 1948  
 1949  
 1950  
 1951  
 1952  
 1953  
 1954  
 1955  
 1956  
 1957  
 1958  
 1959  
 1960  
 1961  
 1962  
 1963  
 1964  
 1965  
 1966  
 1967  
 1968  
 1969  
 1970  
 1971  
 1972  
 1973  
 1974  
 1975  
 1976  
 1977  
 1978  
 1979  
 1980  
 1981  
 1982  
 1983  
 1984  
 1985  
 1986  
 1987  
 1988  
 1989  
 1990  
 1991  
 1992  
 1993  
 1994  
 1995  
 1996  
 1997  
 1998  
 1999  
 2000  
 2001  
 2002  
 2003  
 2004  
 2005  
 2006  
 2007  
 2008  
 2009  
 2010  
 2011  
 2012  
 2013  
 2014  
 2015  
 2016  
 2017  
 2018  
 2019  
 2020  
 2021  
 2022  
 2023  
 2024  
 2025  
 2026  
 2027  
 2028  
 2029  
 2030  
 2031  
 2032  
 2033  
 2034  
 2035  
 2036  
 2037  
 2038  
 2039  
 2040  
 2041  
 2042  
 2043  
 2044  
 2045  
 2046  
 2047  
 2048  
 2049  
 2050  
 2051  
 2052  
 2053  
 2054  
 2055  
 2056  
 2057  
 2058  
 2059  
 2060  
 2061  
 2062  
 2063  
 2064  
 2065  
 2066  
 2067  
 2068  
 2069  
 2070  
 2071  
 2072  
 2073  
 2074  
 2075  
 2076  
 2077  
 2078  
 2079  
 2080  
 2081  
 2082  
 2083  
 2084  
 2085  
 2086  
 2087  
 2088  
 2089  
 2090  
 2091  
 2092  
 2093  
 2094  
 2095  
 2096  
 2097  
 2098  
 2099  
 2100

CONTINENTAL GIN COMPLEX  
HISTORIC DISTRICT  
BIRMINGHAM, ALABAMA

*Jefferson Co.*

Photograph by:  
Randolph C. Marks

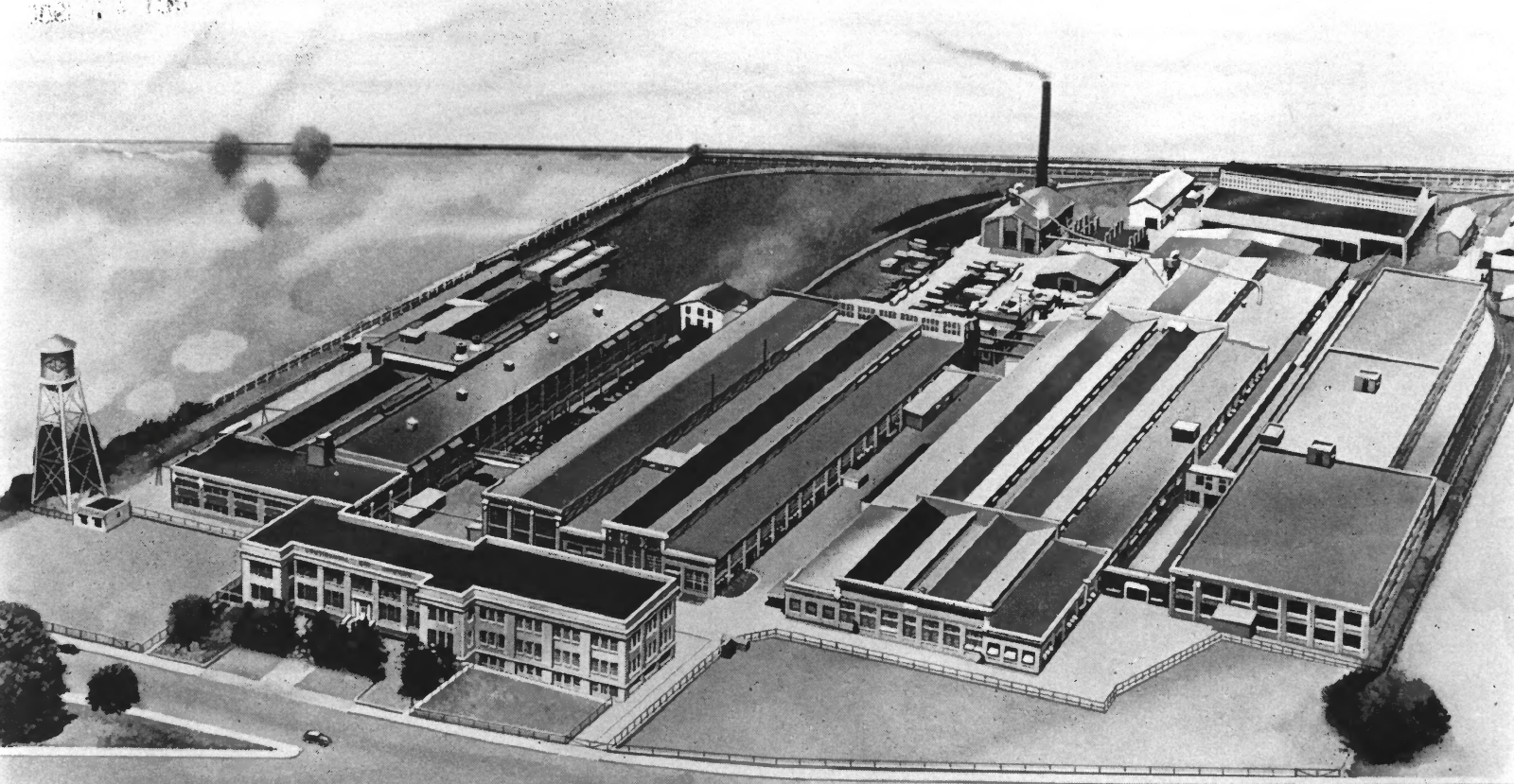
May, 1980

**OCT 23 1980**

3205 Sterling Road  
Birmingham, Alabama

35213

*#29 / 30*



*NEW BIRMINGHAM PLANT—Replacing the Winship Gin and Machine Company plant at Atlanta; the Smith Sons Gin and Machine Company plant at Avondale; and Northington-Munger-Pratt plant at East Birmingham.*

CONTINENTAL GIN COMPLEX  
HISTORIC DISTRICT  
BIRMINGHAM, ALABAMA

*Jefferson Co.*

Photograph by:

Randolph C. Marks

May, 1980

**OCT 23 1980**

3205 Sterling Road  
Birmingham, Alabama  
35213

*30/30*

NOV 20 1980