

UNITED STATES DEPARTMENT OF THE INTERIOR
NATIONAL PARK SERVICE

FOR NPS USE ONLY	
RECEIVED	FEB 25 1986
DATE ENTERED	APR 11 1986

**NATIONAL REGISTER OF HISTORIC PLACES
INVENTORY -- NOMINATION FORM**

DEPRESSION-ERA BUILDINGS

CONTINUATION SHEET

ITEM NUMBER

PAGE 1 of 6

Leavenworth Ranger Station

NAME: Leavenworth Ranger Station

LOCATION: Wenatchee National Forest, Leavenworth Ranger District;
Congressional District 4
Leavenworth, WA (53); Chelan County (007)

ADDRESS: USDA Forest Service
Wenatchee National Forest
301 Yakima St., PO Box 811
Wenatchee, WA 98801

CLASSIFICATION/CATEGORY: Buildings/Site

DESCRIPTION:

Condition
 Good Altered Original Site

Ranger Station Office #2084: 1937-38; Rectangular, 1 1/2 story, wood frame, poured concrete foundation, medium gable roof, center porch gable, south (main) facade, two gabled dormers equidistant on south and north slopes of roof. Horizontal 1x12 clapboard exterior to eaves, vertical board on gable ends and dormers. Mullion windows on main facade, three divisions of six-over-six double-hung sashes, hand-routed surrounds. Main entry, center, south elevation, covered by gabled porch, supported by two heavy squared timber posts with heavy curving squared brackets extending from platform surface to scrolled lintel; gable pediment partially enclosed by three hand-routed square timbers arranged in spoke-like pattern. Another door is single leaf wood panel, upper panel a twelve-light window: door flanked by similar side panels surmounted by twelve-light windows. Open concrete platform, accessed by two straight steps, stone faced. 1963: T-shaped 1 story addition to north elevation, offcenter, medium gable roof. Horizontal clapboard exterior to eaves, vertical boards, plain battens on gable ends. Double-hung sash windows, decorative shutters. 1971: Bavarian decorative motif added to main office structure. Projecting verges and eaves, routed brackets added, narrow scrolled barge boards along previously plain fascia on all gables. Original wood shingle roof materials replaced with split shakes. Sheets of exterior plywood cover vertical boards on gable ends, "half-timbered" with 1x4's; masonite panels with trim placed below mullion windows on main facade. Dormer windows enclosed with exterior plywood, lattice applique; porch gable pediment treatment replicated to scale on

UNITED STATES DEPARTMENT OF THE INTERIOR
NATIONAL PARK SERVICE

**NATIONAL REGISTER OF HISTORIC PLACES
INVENTORY -- NOMINATION FORM**

FOR NPS USE ONLY

RECEIVED

DATE ENTERED

DEPRESSION-ERA BUILDINGS

CONTINUATION SHEET

ITEM NUMBER

PAGE 2 of 6

dormers, pendent added; wood window grilles, with pine tree cutouts, appended to dormer window surroundings. Ornate wall-mounted light fixtures placed on inner porch posts flanking main entry.

Residence #1245: 1937-38; Rectangular, 1 1/2 story, wood frame, poured concrete foundation with stone veneer on south elevation, basement, stone veneer chimney, off center on ridgeline, wood-shingled medium gable roof, inset gable extension abuts main gable, east elevation, offset gable on south (main) facade. Wall shakes cover exterior walls, all elevations. Six-over-six double-hung sash windows, singly and in combinations with plain mullions. Main entry is recessed, under offset gable on south facade; stone flagged open platform accessed by single stone steps; varnished vertical board door with small four-light window offcenter, forms west wall of porch. Offset gable which forms porch cover supported by 4x4 posts arranged in combinations of three at corners, lintel is scrolled. Gable pediment is enclosed with wall shakes, slightly recessed, and exhibits a spoke-like arrangement of three timbers, the vertical center member is turned and hand-routed, the remaining two members, angled at 45 degrees to the center member, are plain. A gable hood, supported by stepped, solid brackets flush with the wall plane, covers the rear entrance, offcenter on the east gable end. No obvious structural or material alterations to exterior. Interior is finished in knotty pine: stone fireplace, center, north wall of living room; corner china cupboards built-in in dining room; oak floors. Bedroom, bath and kitchen finished in lath and plaster.

Garage #1586: Rectangular, 1 story, wood framed, poured concrete foundation, wood-shingled medium gable roof. Exterior walls are clad with wall shakes. Windows are six-light single sash in horizontal arrangement. Slide opening vehicular doors on east gable end have been replaced with bearing wall surfaced with exterior plywood, with decorative trim to simulate half-timbering. Two-leaf laminated doors offset to right on east gable end.

Residence #1243: 1938-39; L-shaped, 1 1/2 story, wood frame, poured concrete foundation, stone veneered; split-shake gabled hip roof, offset gable extending from west (main) facade, stone exterior end chimney, with arched stone cap, slightly offcenter on ridgeline. Horizontal clapboard exterior to eaves, vertical boards, rounded on lower end, on gablets and on offset gable end. Six-over-six double-hung sash windows, flanked by decorative vertical board shutter. Main entry offcenter on west elevation, recessed in corner of offset gable end: porch formed by gable roof, supported by three heavy squared timber posts, each with short curved brackets, flush, lintels plain. Single leaf wood

UNITED STATES DEPARTMENT OF THE INTERIOR
NATIONAL PARK SERVICE

FOR NPS USE ONLY

RECEIVED

DATE ENTERED

**NATIONAL REGISTER OF HISTORIC PLACES
INVENTORY -- NOMINATION FORM**

DEPRESSION-ERA BUILDINGS

CONTINUATION SHEET

ITEM NUMBER

PAGE 3 of 6

panel door with six-light window accessed by open platform, three straight stairs, stone-faced. Rear entry offcenter on east elevation, covered by shed-roofed hood, supported by turned and routed brackets. Single slender, graceful pine tree cut from vertical wall materials center roof gablet and off-set gable end: simple pine tree cutout on each decorative window shutter. No obvious structural or material alteration to exterior.

Garage for #1243: Rectangular, 1 story, wood frame, poured concrete foundation, split shake medium gable roof. Horizontal clapboard exterior to eaves, vertical boards, lower ends rounded, on gable ends. Six-light single sash windows, horizontal, flanked by decorative vertical board shutters. Slide-opening vertical board vehicle door offcenter, north gable end; single leaf laminated door offcenter also on north gable end. Single leaf door offcenter on gable end. Single slender pine tree cut from vertical board wall materials, center each gable end; simple pine tree cutout on each decorative window shutter. Original wall materials or an additional slide-opening vehicle door appear to have been replaced on north gable end. Laminated, flush door of recent manufacture implaced in wall of channel-grooved vertical siding.

Automotive Shop #2185: H-shaped, 1 1/2 story, wood frame, poured concrete foundation, gabled hip roof with cross-gable on both ends, two gabled dormers, equidistant, on east slope of main roof, gabled hood, center east (main) facade. Horizontal clapboard exterior wall materials to eaves, vertical boards on gablets, vertical boards, angular cut, battens every other board on cross-gable ends: dormers exhibit horizontal clapboard exterior walls with vertical boards, lower ends rounded, on gable pediments; gabled hood exhibits vertical boards, lower ends rounded, with battens every other board. Two vertical-lift vehicle doors flank a single leaf vertical board entry centered on east facade; identical vertical-lift vehicle door centered in each cross-gable end on east elevation. Four mullion windows of two and four divisions, each with twelve-light single sashes, extend the length of the north and south elevations. Originally, the windows incorporated an additional tier of like divisions; these are now covered with boards having divided triangular designs fabricated from 1x4 boards. The gablets and dormers exhibit louvered ventilators. A single graceful pine tree, cut from the vertical board wall materials have been replaced with corrugated sheet metal. No structural alteration is apparent, but original functional elements; i.e., the upper windows, covered or replaced.

Equipment Storage Building #2384: 1937-38; rectangular, 1 story, wood frame, poured concrete foundation, gabled hip roof, gabled hood, offcenter on west elevation. Horizontal clapboard exterior to eaves, vertical boards on gablets. Nine-light sash windows in combinations of two and five with mullions; mullion windows, three divisions of six vertical lights centered in gablets.

UNITED STATES DEPARTMENT OF THE INTERIOR
NATIONAL PARK SERVICE

FOR NPS USE ONLY

RECEIVED

DATE ENTERED

**NATIONAL REGISTER OF HISTORIC PLACES
INVENTORY -- NOMINATION FORM**

DEPRESSION-ERA BUILDINGS

CONTINUATION SHEET

ITEM NUMBER

PAGE 4 of 6

Single-leaf vertical board doors, side entries, off center on west elevation, covered by gabled hood, and on east elevation, uncovered. South elevation, main facade, six bays in length: Comprised of six vertical board slide-opening doors, interspaced with seven heavy squared timber posts with short, flush curved brackets. No decoration. Corrugated sheet metal is original roof material. No obvious structural alterations to exterior.

Gas House #2584: L-shaped, 1 story, wood frame, poured concrete foundation, medium gable roof, large gabled porch, off center on west (main) facade covering service area and pump island, raised plank loading dock, center south gable end. Horizontal clapboard exterior to eaves, vertical boards, battens every other board all gable ends. Nine-light sash windows, singly and in combinations with mullions. Two-leaf vertical board door, centered beneath gabled porch; two equidistant four-leaf, hinged opening vehicle door, offcenter west elevation; slide-opening vertical-board loading door with nine-light window in upper panel, center south gable end. Gabled porch is supported by two heavy squared timber posts with long heavy curving brackets, center and sides. Single graceful pine tree, cut from vertical board wall materials, centered, porch gable pediment. Corrugated sheet metal on main roof and textured metal materials on projecting gable replace original roof materials. Extension of offset gable to cover pump island is recent addition; original structure numbers and materials used to achieve sympathy with initial design.

Fire Warehouse #2692: Rectangular, 1½ story, wood frame, poured concrete foundation, wood-shingled medium gable roof, wood-shingled gabled hood, offcenter on east elevation, shed-roofed porch abuts west elevation, offcenter; corbeled brick interior chimney, center, west slope of roof. Horizontal shiplap exterior, end boards. Six-light wood casement windows, in serial combinations with mullions. Large double-leaf hing-open door, faced with identical shiplap material, centered on south gable end. No decoration. No obvious structural or material alteration to exterior.

SIGNIFICANCE:

The Leavenworth Ranger Station typifies the construction projects undertaken by the Civilian Conservation Corps and signifies the aid to the local community provided by the emergency work-relief program through employment of youth and experienced craftsmen, purchase of building materials and camp supplies, and personal expenditures of enrollees. The property represents the Forest Service's presence in the locality, as the headquarters for field operation, and denotes, via the physical facilities required to carry out the agency's

UNITED STATES DEPARTMENT OF THE INTERIOR
NATIONAL PARK SERVICE

FOR NPS USE ONLY
RECEIVED
DATE ENTERED

**NATIONAL REGISTER OF HISTORIC PLACES
INVENTORY -- NOMINATION FORM**

DEPRESSION-ERA BUILDINGS

CONTINUATION SHEET

ITEM NUMBER

PAGE 5 of 6

expanding responsibilities, the critical transition in the Service's development from custodial superintendence to extensive resource management. The Leavenworth Ranger Station exemplifies the rustic architectural idiom developed by the Forest Service, Pacific Northwest Region, to impart Forest Service identity and to represent its purposes and ideals; and signifies the agency's particular interpretation of a singular expression of early twentieth century American architectural thought. Possessing high qualities of design and execution, the Ranger Station is a very good example of an architectural locution invested with special aesthetic and associative values by the agency that created it.

In 1968, the town of Leavenworth adopted a Bavarian theme, and as a resident agency, the Forest Service elected to participate. Material additions to the Ranger Station Office, evocative of Bavarian decor, altered the appearance of the structure.

The upper tier of windows on all elevations of the Machine Shop #2185, was also covered with exterior plywood and decorated with contrasting 1 x 4's to effect a "half-timber" appearance. Although consistent with the Bavarian theme, the primary reason for the alteration was the conservation of energy. None of the other buildings in the complex were materially altered to reflect the decorative theme.

The decorative material additions to the Ranger Station Office and to the Machine Shop in the Bavarian motif were done with good taste, and do not significantly detract from the integrity of the initial architecture. Except for the structural addition of the roof trim, the new materials covered rather than replaced the original fabrics and features, and although intended to be permanent, could be removed without injury to the original forms or materials.

The adoption of the town's decorative theme is indicative of the Forest Service's traditional involvement with the community in which it is established.

GEOGRAPHIC DATA:

Acreage: less than 10 acres total

UTM Reference:

<u>Point</u>	<u>Zone</u>	<u>Easting</u>	<u>Northing</u>
A	11	676233	5274229

UNITED STATES DEPARTMENT OF THE INTERIOR
NATIONAL PARK SERVICE

**NATIONAL REGISTER OF HISTORIC PLACES
INVENTORY -- NOMINATION FORM**

FOR NPS USE ONLY

RECEIVED

DATE ENTERED

DEPRESSION-ERA BUILDINGS

CONTINUATION SHEET

ITEM NUMBER

PAGE 6 of 6

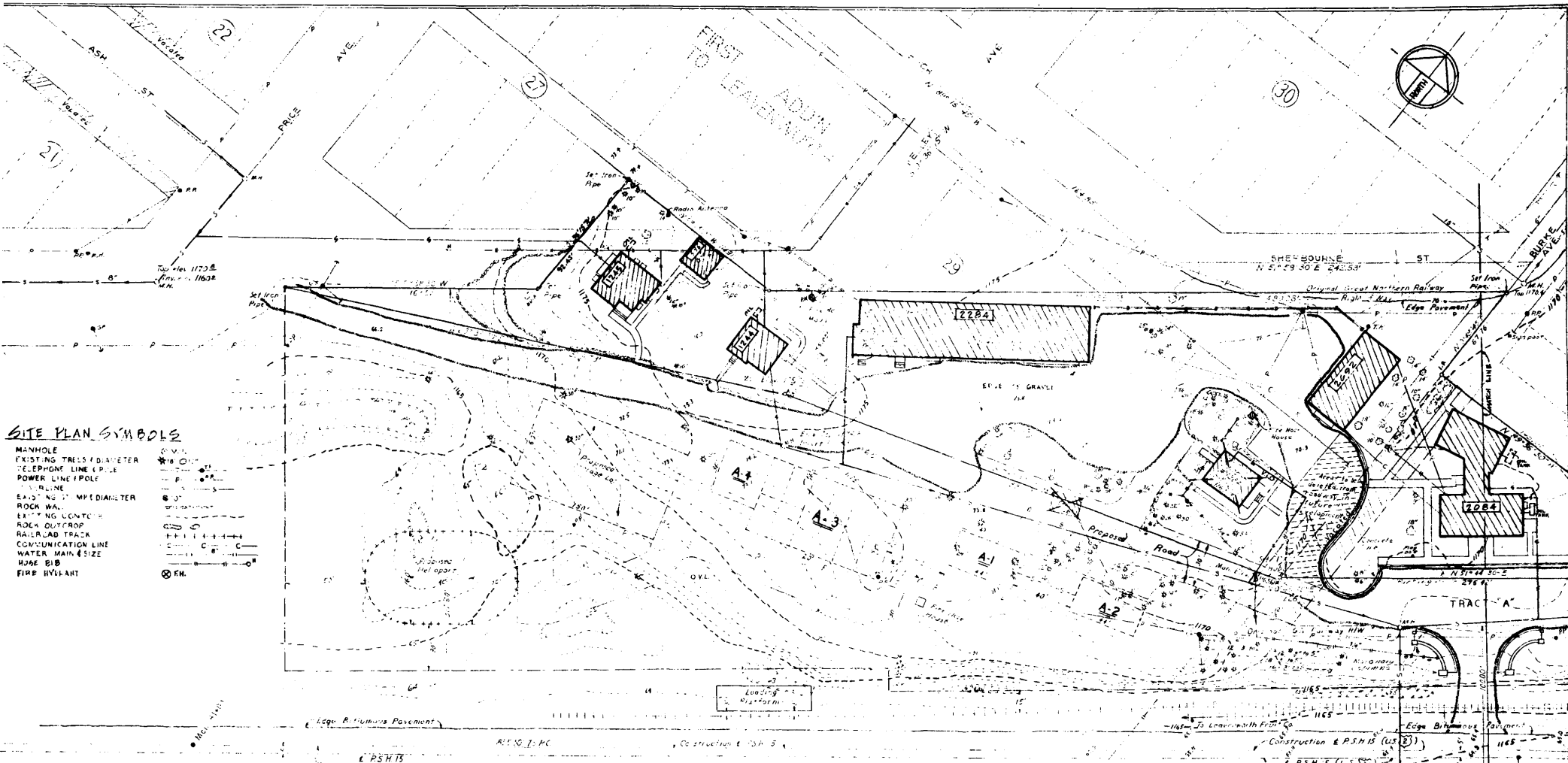
Verbal Boundary Description:

Leavenworth Ranger Station

In the County of Chelan, State of Washington. A parcel of land lying in the southeastern quarter of the southwest quarter and the southwest quarter of the southeast quarter of Section 1, Township 24 North, Range 17 East, W.M. Chelan County, Washington, described as follows:

Commencing at the south quarter corner of said Section 1; thence due north 775.5 feet, more or less, to a brass cap on the east line of the southeast quarter of the southwest quarter; said brass cap being the true point of beginning; thence south 73°00' west 339.09 feet; thence south 63°35'30" west 329.73 feet; thence north 51°58'30" east 480.08 feet; thence south 00°48'45" west 67.76 feet; thence south 89°46'15" east 422.88 feet; thence south 51°58'30" west 389.05 feet; thence north 89°36'45" west 50.09 feet; thence south 51°44'30" west 275.42 feet to the true point of beginning.

Residence #1243 and garage are on a parcel adjacent to, but distinct from the Ranger Station Compound. The legal description as recorded in Book 250, Page 520, Chelan County Records, is all of Lots 6, 7, and 8, Block 1, Burke Addition to the City of Leavenworth, according to the official plot thereof (in the SW1/4SE1/4, Section 1, T. 24 N., R. 17 E., W.M.). This description describes a rectangular area 90 feet north to south and 105 feet east to west.

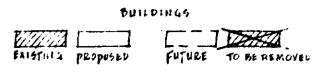


SITE PLAN SYMBOLS

- MANHOLE
- EXISTING TREE (DIAMETER)
- TELEPHONE LINE (PILE)
- POWER LINE (POLE)
- RAILROAD TRACK
- EXISTING 12" PIPE DIAMETER
- ROCK WALL
- EXISTING 12" CONCRETE
- ROCK OUTCROP
- RAILROAD TRACK
- COMMUNICATION LINE
- WATER MAIN (SIZE)
- WATER BLD
- FIRE HYDRANT

Note: A1-A2 are proposed
 Buildings #A1-A2
 #12-125
 A1-A2 are proposed for 12 vehicles. See notes
 A1-A2 are proposed for 12 vehicles.

BUILDING NO.	DESCRIPTION	PLAN NO.
2084	OFFICE	122 A
2092	ROADS WAREHOUSE	
1984	CREW HOUSE	
2184	DISPATCH WAREHOUSE	
1244	T.A.A. DWELLING	
1536	TIMBERMAN GARAGE	
1245	P.C.O. DWELLING	



DESIGNED BY: _____ DATE _____
 DRAWN BY: _____ DATE _____
 APPROVED: _____ DATE _____
 FOREST SUPERVISOR

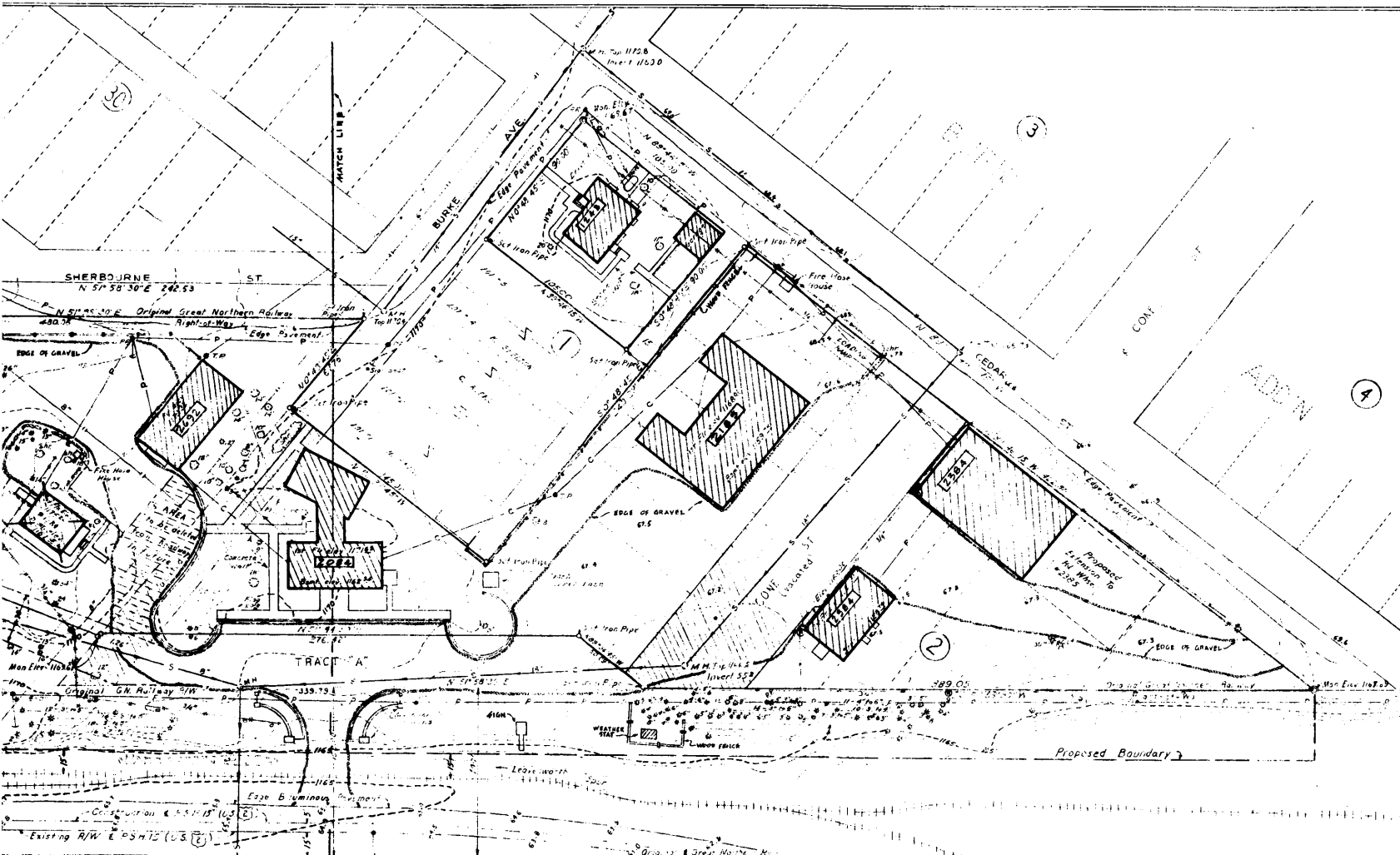
U.S. DEPARTMENT OF AGRICULTURE
 FOREST SERVICE
 WENATCHEE NATIONAL FOREST
 THE PACIFIC NORTHWEST REGION

SITE DEVELOPMENT PLAN
 LEAVENWORTH RANGER STAT.
 SCALE 1" = 30'-0"

Sheet 1 of 2



SCALE 1"=20'-0"

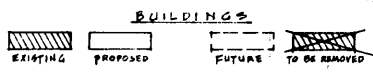


SITE PLAN SYMBOLS

- MANHOLE
- EXISTING TREES (DIAMETER)
- TELEPHONE LINE & POLE
- POWER LINE & POLE
- SEWERLINE
- EXISTING STUMP (DIAMETER)
- ROCK WALL
- EXISTING CONTOUR
- ROCK OUTCROP
- RAILROAD TRACK
- COMMUNICATION LINE
- WATER MAIN (SIZE)

LEGEND:

BUILD. NO.	DESCRIPTION	PLAN NO.
2105	MACHINE SHOP	
2204	ROAD EQUIP. WAREHOUSE	
2304	OIL HOUSE	
2493	DWELLING	
2692	ROAD WAREHOUSE	



Highway Curve Data
 Δ = 46° 06' 15"
 R = 6.98'
 R = 151.0'
 T = 722.5'
 L = 1201'

REC.	
E.	
Q.	

DESIGNED BY:	DATE:
DRAWN BY:	DATE:
APPROVED:	DATE: 12/16/66
APPROVED:	DATE:

U.S. DEPARTMENT OF AGRICULTURE
 FOREST SERVICE
WENATCHEE NATIONAL FOREST
 THE PACIFIC NORTHWEST REGION

SITE DEVELOPMENT PLAN
 LEAVENWORTH RANGER STAT.
 SCALE 1"=20'-0"

Frank W. [Signature]
 Sheet 2 of 2