

(Rev. 10-90)

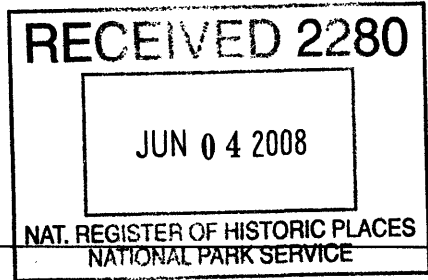
United States Department of the Interior

National Park Service

NATIONAL REGISTER OF HISTORIC PLACES

REGISTRATION FORM

1. Name of Property



276

historic name: Eaton Elementary School
other names/site number: Third Ward School

2. Location

street & number: 1105 McInnis Avenue not for publication ___
city or town: Hattiesburg vicinity ___
state: Mississippi code: MS county: Forrest code: 35 zip code:

3. State/Federal Agency Certification

As the designated authority under the National Historic Preservation Act of 1966, as amended, I hereby certify that this X nomination ___ request for determination of eligibility meets the documentation standards for registering properties in the National Register of Historic Places and meets the procedural and professional requirements set forth in 36 CFR Part 60. In my opinion, the property X meets ___ does not meet the National Register Criteria. I recommend that this property be considered significant ___ nationally ___ statewide X locally. (___ See continuation sheet for additional comments.)

H. Roberts 5-19-2008
Signature of certifying official Date

State Historic Preservation Officer
State or Federal agency and bureau

In my opinion, the property ___ meets ___ does not meet the National Register criteria. (___ See continuation sheet for additional comments.)

Signature of commenting or other official Date

State or Federal agency and bureau

4. National Park Service Certification

I, hereby certify that this property is:

entered in the National Register,
___ See continuation sheet.

___ determined eligible for the
National Register

___ See continuation sheet.

___ determined not eligible for the

National Register
___ removed from the National Register

___ other (explain):

Signature of the Keeper Date of Action
 Edson H. Beall 7-16-08

5. Classification

Ownership of Property: Public-local

Number of Resources within Property:
(Do not include previously listed resources in the count)

Category of Property:	Building	Contributing	Noncontributing	
		1		buildings
				sites
				structures
				objects
		1		Total

Name of related multiple property listing **Number of contributing resources previously listed**
(Enter "N/A" if property is not part of a multiple property listing.) **in the National Register** None
NA

6. Function or Use

Historic Functions: EDUCATION/school

Current Functions: VACANT/Not in Use

7. Description

Architectural Classification(s): LATE 19TH AND 20TH CENTURY REVIVALS/Romanesque Revival

Materials:

foundation: Concrete
roof: Asphalt shingles
walls: Stucco; brick
other

Narrative Description:

See Continuation Sheets

8. Statement of Significance

Applicable National Register Criteria

- X A Property is associated with events that have made a significant contribution to the broad patterns of our history.
- B Property is associated with the lives of persons significant in our past.
- X C Property embodies the distinctive characteristics of a type, period, or method of construction or represents the work of a master, or possesses high artistic values, or represents a significant and distinguishable entity whose components lack individual distinction.
- D Property has yielded, or is likely to yield information important in prehistory or history.

Areas of Significance
EDUCATION/ARCHITECTURE

Period of Significance
1905-1958

Significant Dates
1949; 1957

Criteria Considerations:
Property is:

- A owned by a religious institution or used for religious purposes.
- B removed from its original location.
- C a birthplace or a grave.
- D a cemetery.
- E a reconstructed building, object, or structure.
- F a commemorative property.
- G less than 50 years of age or achieved significance within the past 50 years.

Significant Person(s)

Cultural Affiliation(s)

Architect/Builder

1905: Robert E. Lee;
1949: Hearon & McClesky

Narrative Statement of Significance: See continuation sheets.

9. Major Bibliographical References

Bibliography See continuation sheet.

Previous documentation on file (NPS)

- preliminary determination of individual listing (36 CFR 67) has been requested.
- previously listed in the National Register
- previously determined eligible by the National Register
- designated a National Historic Landmark
- recorded by Historic American Buildings Survey

- recorded by Historic American Engineering Record

Primary Location of Additional Data

- State Historic Preservation Office
- Other State agency
- Federal agency
- Local government
- University
- Other

Name of repository:

10. Geographical Data

Acreeage of Property: Less than 1

UTM References:	Zone	Easting	Northing	Zone	Easting	Northing
A	16	282980	3467700	C		
B				D		

___ See continuation sheet.

Verbal Boundary Description See continuation sheet.

Boundary Justification: See continuation sheet.

11. Form Prepared By

name/title: Jennifer Baughn and William Gatlin

organization Mississippi Department of Archives and History

date: March 26, 2008

street & number: P.O. Box 570

telephone: 601-576-6940

city or town: Jackson

state: MS zip code: 39205-0571

Additional Documentation

Submit the following items with the completed form:

Continuation Sheets

Maps

A USGS map (7.5 or 15 minute series) indicating the property's location.

A sketch map for historic districts and properties having large acreage or numerous resources.

Photographs

Representative black and white photographs of the property.

Additional items (Check with the SHPO or FPO for any additional items)

Property Owner(s)

name: City of Hattiesburg

street & number: 200 Forrest Street, P.O. Box 1898

telephone: 601-545-4594

city or town: Hattiesburg

state: MS

zip code: 39403

Paperwork Reduction Act Statement: This information is being collected for applications to the National Register of Historic Places to nominate properties for listing or determine eligibility for listing, to list properties, and to amend existing listings. Response to this request is required to obtain a benefit in accordance with the National Historic Preservation Act, as amended (16 U.S.C. 470 et seq.).

Estimated Burden Statement: Public reporting burden for this form is estimated to average 18.1 hours per response including the time for reviewing instructions, gathering and maintaining data, and completing and reviewing the form. Direct comments regarding this burden estimate or any aspect of this form to the Chief, Administrative Services Division, National Park Service, P.O. Box 37127, Washington, DC 20013-7127; and the Office of Management and Budget, Paperwork Reductions Projects (1024-0018), Washington, DC 20503.

**United States Department of the Interior
National Park Service**

**NATIONAL REGISTER OF HISTORIC PLACES
CONTINUATION SHEET**

Section: 7

Page: 1

Eaton Elementary School
Forrest County, Mississippi

NARRATIVE DESCRIPTION

The Eaton Elementary School, located in a residential neighborhood near downtown Hattiesburg, Mississippi, occupies a roughly T-shaped footprint. The upright of the T, consisting of the oldest portion of the building, is a two-story stucco covered structure featuring arched openings and a hip roof. The cross of the T is a later one-story brick structure with a flat roof.

The original section, completed in 1905, is two stories high topped by a hip roof covered with asphalt shingles. When built, the roof was crowned by a square louvered cupola, and a louvered hipped dormer pierced the W slope—by 1950, these features had been removed, probably due to difficulty of maintenance. All exterior walls were stuccoed at an unknown date—originally the brick masonry was exposed. A corbelled cornice decorates all elevations just below the roofline, and at the second-story level, a continuous window cornice and continuous sill line the building on all sides, framing the second-story windows on top and bottom. First floor windows on all sides exhibit less ornate detailing, with plain cornices and simple stone sills. Currently, all windows are boarded, but most are intact behind the plywood, although broken and in need of repair. All windows are 4/4 wood double-hung-sash—those on the second floor have round-arched heads, while those on the first floor feature segmentally arched heads.

The north façade features three symmetrical bays, dominated by the gabled center pavilion that projects slightly from the wall plane, its parapet wall flanked by short corbelled pilasters at the top. A tripartite round-arched window is in the gable end of the pavilion above four round-arched windows at the second-story level. The main entrance is located at the first-story level—double-leaf metal replacement doors are sheltered by a canopy and are topped by a round-arched transom with divided lights. Originally this entrance was flush with the outside wall, but by the 1950s, the doors had been recessed behind the arch. Flanking the center pavilion on either side are four windows at both the first and second stories. Offset to the east, a metal fire escape rises from the ground to the flat roof of the one-story addition.

The west elevation features seven equally spaced windows on each floor, with the same details as previously described. The center window on the second floor has been replaced with a metal door that opens to a metal fire escape.

The south (rear) elevation exhibits less symmetry than other elevations—the upper floor has 10 windows, while some openings on the first floor have clearly been infilled. A center entrance on the first floor consists of a double-leaf steel door, corresponding to the center hall accessed by the front entrance. Three original windows are to the right of the door, while two 12-light steel hopper/fixed windows are to the left.

**United States Department of the Interior
National Park Service**

**NATIONAL REGISTER OF HISTORIC PLACES
CONTINUATION SHEET**

Section: 7

Page: 2

Eaton Elementary School
Forrest County, Mississippi

The interior, other than a few modifications and deterioration due to a leaking roof, is almost completely intact in both materials and floor plan. Four classrooms are located on each floor, connected by a simple hallway system. On the first floor, a center hallway runs the length of the building, from the main entrance on the north to the rear entrance on the south. A cross-axial hall, inserted into the building when the 1949 addition was built on the W side, intersects this main hallway at the center, leading to the cafeteria of the 1949 addition. Two offices are located just to the right of the main entrance—these are probably not original and if not, were carved out of the classroom in this quadrant of the building. At the rear of the main hall, a double-entry stair leads up to the second floor level. On the second floor, the four classrooms take up the four quadrants of the space, each opening onto a central stair hall. A long, narrow closet also opens onto this hall, with its opposite end containing the center window of the N façade. Closets opening into the classrooms themselves separate the two southern classrooms from the two northern classrooms.

It is surprising that the original building did not apparently include an auditorium or assembly room on the second floor, as was common in schools of this size during this period.¹ Its Hattiesburg contemporary, Walthall (Court Street) School, built in 1902, also apparently did not have an auditorium until a 1920s renovation/addition. Whether this indicates a lack of money on the part of the school district, a curriculum that did not include daily assemblies, or the architect's failure to research the most up-to-date school plans is unknown.

¹ See, for example, the plans designed by Jackson architect P.H. Weathers and published by the State Supt. of Public Education in 1901, 1902, and 1903. All of the ten buildings represented are two-stories high, all contain at least four classrooms, and all feature an assembly hall on the second floor.

**United States Department of the Interior
National Park Service**

**NATIONAL REGISTER OF HISTORIC PLACES
CONTINUATION SHEET**

Section: 7

Page: 3

Eaton Elementary School
Forrest County, Mississippi

Some changes in material occurred on the interior around the time of the 1949 addition—linoleum now covers the floors on both the first and second stories, and 2' x 1' fiber-tile is attached over (now more often falling from) the original beadboard ceilings. Plaster walls are throughout, with a low beadboard wainscot running below the window sills. Beadboard also decorates the staircase on the knee walls and the bottom of the staircase. On the first floor, all classroom doors have been replaced, but retain their 1-light transoms; on the second floor, original 5-panel wood doors with 1-light transoms are in place.

A one-story brick addition with a flat roof, built in 1949, is located to the east of the two-story wing. This addition contains 3 classrooms, a kitchen, and a cafetorium—a space designed to accommodate both a cafeteria and a meeting space with stage. In 1957, a dedicated seating area on the opposite side of the stage was added to the N (front) elevation of this section of the building. Features of this two-stage addition include 6-light steel-frame awning-type windows with concrete sills. Exterior doors have been replaced on both additions, but otherwise, both the interior and exterior are original and intact.

**United States Department of the Interior
National Park Service**

**NATIONAL REGISTER OF HISTORIC PLACES
CONTINUATION SHEET**

Section: 8

Page: 4

Eaton Elementary School
Forrest County, Mississippi

STATEMENT OF SIGNIFICANCE

The Eaton Elementary School is eligible for listing on the National Register of Historic Places under Criterion A for significance associated with Education for the role it played in providing public schooling to generations of Hattiesburg residents. The Eaton Elementary School is also eligible for listing on the National Register under Criterion C as a good local example of Romanesque Revival style architecture applied to a public school building.

Education

The city of Hattiesburg was founded by Capt. William H. Hardy in 1882. Hardy was a pioneer in the timber and railroad industries, and Hardy had the foresight to recognize the potential economic benefits the two industries would create. After a slow beginning, Hattiesburg, named for Hardy's wife, became a boom town. The completion of the Gulf and Ship Island Railroad in 1897 connected the near virgin yellow pine forests of southwest Mississippi with a deep water port and sparked unprecedented growth that saw a small village grow into the state's fourth largest city in less than twenty-five years.

The first decade of the Twentieth Century saw a huge increase in population in Hattiesburg creating the need for a rapid growth of educational facilities. The Hattiesburg public school system was created in 1895 when the Board of Aldermen elected the first trustees. Students, under the care on Miss Ann McLeod, the sole teacher, met in a frame structure near the Presbyterian church. A two-story brick building on Main Street housed Hattiesburg's first "permanent" school building.

As the population grew, the need for additional schools also grew. Hattiesburg was divided in four "wards" and the first ward school was built on Court Street in 1902 and later named Walthall School (NR 1980). The third ward school, named for the early settler who donated the land for the building, George Eaton, was completed in 1905. Additional ward schools were built on Hardy Street (NR 1993) in 1907 and Bouie Street in 1908 (demolished 1967). By about 1910, Hattiesburg had five two-story brick schools for whites and one frame building for black students.¹

Eaton School served the Hattiesburg community as an elementary school for eighty years. It serves as a visual reminder of the city's early rapid growth and the boom years of the early twentieth century. The older wing of the Eaton School is largely intact, retaining the original floorplan and much of its interior finish.

¹ John Ray Skates, "Hattiesburg: The Early Years," in *Hattiesburg: A Pictorial History*, ed. Kenneth G. McCarty. (Jackson: University Press of Mississippi, 1982), 7.

**United States Department of the Interior
National Park Service**

**NATIONAL REGISTER OF HISTORIC PLACES
CONTINUATION SHEET**

Section: 8 Page: 5 Eaton Elementary School
Forrest County, Mississippi

Hattiesburg experienced another period of growth in the 1940s. Nearby Camp Shelby was a major training post during World War II. Even after Camp Shelby closed in 1946, Hattiesburg continued to grow with both a small business boom and a major building boom. The population grew from 21,000 in 1940 to 40,000 in 1949. This growth again stressed the educational infrastructure. The city passed a \$1.5 million bond issue for school expansion.² One of the projects included an expansion of Eaton School, with the addition of a large cafeteria/auditorium and three classrooms. The one-story addition stands as a memorial to an important period of Hattiesburg's history and the growth of its public school system.

Architecture

The Eaton Elementary School was constructed in two primary phases. The earlier phase, completed in 1905, is the two story wing probably designed by noted Mississippi architect Robert E. Lee.³ The building exemplifies many characteristics associated with Romanesque Revival architecture.

The Romanesque Revival style developed in Germany in the early years of the nineteenth-century. It arose out of a desire for a national style that reflected a nation's heritage. In England and France, architects turned to Gothic antecedents in defining a national style. German architects turned rather to the example of medieval Romanesque buildings found in Germany. They adopted the *Rundbogenstil*, or rounded arch style.⁴

By the 1840s, some American architects began to experiment with the German revival style. James Renwick is credited with the first Romanesque Revival building in America, his Smithsonian Institution (1847-1851) in Washington, D.C. The style was spread throughout America by the Congregationalist Church, which adopted the style in its 1853 publication *A Book of Plans for Churches and Parsonages*. The style was also popularized by the large influx of German settlers, including architects, in the 1840s.⁵

The Romanesque Revival style is recognized by the use of rounded or semi-circular arches for window and door openings. Although the exterior walls are largely smooth, rounded arches may be used decoratively, with corbel tables often used in belt courses to mark floor divisions and as

² Peggy Mengis, "Camp Shelby is Silent, But Hattiesburg is Booming," *The Times Picayune Magazine*, November 13, 1949.

³ This attribution is based on the strong resemblance in both appearance and floorplan between the original sections of Eaton and Walthall Schools. R.E. Lee is documented as the architect of Walthall, built only 3 years before Eaton, and Lee continued to be the only locally based architect in Hattiesburg through the 1910s.

⁴ Mark Gelernter. *A History of American Architecture*. (Hanover, NH and London: University Press of New England, 1999), 139.

⁵ John C. Poppeliers and S. Allan Chambers, Jr. *What Style Is It?* Rev. Ed. (Hoboken, NJ: John Wiley & Sons, 2003), 54-56.

**United States Department of the Interior
National Park Service**

**NATIONAL REGISTER OF HISTORIC PLACES
CONTINUATION SHEET**

Section: 8

Page: 6

Eaton Elementary School
Forrest County, Mississippi

decorative elements along the eaves. Archivolt may be expressed by continuous hood molding, often with corbel tables. Many Romanesque Revival buildings have square or polygonal towers, sometimes of differing heights and employing different roof coverings.

Eaton Elementary School building exhibits many of these characteristics. All upper windows are contained in rounded openings, and the front entrance is sheltered under a rounded arch. Continuous rounded hooding caps all the windows along all faces of the second floor. A corbelled watertable and a corbelled belt provide visual breaks between floors. The corbelled cornice is textbook Romanesque Revival. The stucco finish provides the smooth wall finish expected in buildings of this style.

The one-story 1949 (and later 1957) additions—designed by Hattiesburg architects Hearon & McCleskey—enhance the Romanesque Revival style of the older wing by providing a stark visual contrast. The massing and vibrant architectural detail of the original building allows it to retain an independent presence on the site.

Although the building suffers from the effects of deferred maintenance, it remains the one of most complete and intact of the Romanesque Revival school buildings of the period. The Natchez Institute, Adams County (built 1901, NR 1979), is one of the few Romanesque Revival schools to survive. However, it lost part of its center tower over the years. The Ackerman Public School, Choctaw County, built in 1905-06 was demolished in 1941. The Macon Public School, Noxubee County, built c. 1900 was demolished c. 1960. Eaton Elementary School is a rare surviving Romanesque Revival school built at the beginning of the 20th century.

**United States Department of the Interior
National Park Service**

**NATIONAL REGISTER OF HISTORIC PLACES
CONTINUATION SHEET**

Section: 10 Page: 7 Eaton Elementary School
Forrest County, Mississippi

BIBLIOGRAPHY

Blumenson, John J.-G. *Identifying American Architecture*. Rev. Ed. New York: W.W. Norton & Company, 1981.

Braswell, Janet and Chuck Abadie. *Hattiesburg, Mississippi: Our History in Pictures*. Hattiesburg: *The Hattiesburg American*.

The Hattiesburg American

Gelernter, Mark. *A History of American Architecture*. Hanover, NH and London: University Press of New England, 1999.

McCarty, Kenneth G., ed. *Hattiesburg: A Pictorial History*. Jackson: University Press of Mississippi, 1982.

Mengis, Peggy. "Camp Shelby is Silent, But Hattiesburg's Booming." *The Times Picayune Magazine*, November 13, 1949.

Mississippi Department of Archives and History, Subject Files, Hattiesburg 0-1929; Hattiesburg-1930-1949; Hattiesburg-Education.

Mississippi Department of Archives and History, Historic Preservation Division, Statewide Survey Files.

Poppeliers, John C. and S. Allan Chambers. *What Style Is It?* Rev. Ed. Hoboken, NJ: John Wiley & Sons, 2003.

**United States Department of the Interior
National Park Service**

**NATIONAL REGISTER OF HISTORIC PLACES
CONTINUATION SHEET**

Section: 10 Page: 8 Eaton Elementary School
Forrest County, Mississippi

VERBAL BOUNDARY DESCRIPTION:

The following described property located in Hattiesburg, Forrest County, Mississippi, and more particularly described as follows, to-wit:

PARCEL ONE

A part of the Northeast Quarter of the Southwest Quarter of Section 10, Township 4 North, Range 13 West in Hattiesburg, Forrest County, Mississippi, more particularly described by beginning 25 feet West of the Southeast corner of the South half of the North half of the Northeast Quarter of the Southeast Quarter of said Section, Township and Range, and run thence West on the North side of Laurel Street 287.5 feet; thence at right angles North 275 feet to McInnis Avenue; thence at right angles East along the South side of said Avenue 287.5 feet; thence South 275 feet to the point of beginning.

PARCEL TWO

Lots 1, 2, 3, 4, and 5 of Block 4 D. D. McInnis Second Survey or Addition to the City of Hattiesburg and being a part of the Northwest Quarter of the Southwest Quarter of Section 11, Township 4 North, Range 13 West, together with all improvements and appurtenances thereunto belonging.

BOUNDARY JUSTIFICATION:

This is the property historically associated with Eaton Elementary School.

**United States Department of the Interior
National Park Service**

**NATIONAL REGISTER OF HISTORIC PLACES
CONTINUATION SHEET**

Section: Photos Page: 9 Eaton Elementary School
Forrest County, Mississippi

PHOTOGRAPHS

FOR PHOTOGRAPHS 1-7:

1. EATON ELEMENTARY SCHOOL
2. FORREST COUNTY, MISSISSIPPI
3. SUSAN M. TIETZ, MDAH
4. FEBRUARY 13, 2008
5. MISSISSIPPI DEPARTMENT OF ARCHIVES AND HISTORY, JACKSON, MS

FOR PHOTOGRAPHS 8-9:

1. EATON ELEMENTARY SCHOOL
2. FORREST COUNTY, MISSISSIPPI
3. JENNIFER BAUGHN, MDAH
4. APRIL 3, 2003
5. MISSISSIPPI DEPARTMENT OF ARCHIVES AND HISTORY, JACKSON, MS

PHOTOGRAPH 1: NORTH ELEVATION, VIEW TO SOUTH

PHOTOGRAPH 2: EAST ELEVATION, VIEW TO WEST

PHOTOGRAPH 3: SOUTH ELEVATION, VIEW TO NORTH

PHOTOGRAPH 4: INTERIOR, SECOND FLOOR CLASSROOM

PHOTOGRAPH 5: INTERIOR, SECOND FLOOR CLASSROOM

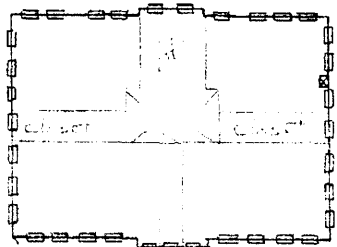
PHOTOGRAPH 6: 1949 ADDITION, VIEW TO NORTHEAST

PHOTOGRAPH 7: 1949 ADDITION, 1905 WING, VIEW TO NORTHEAST

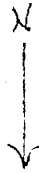
PHOTOGRAPH 8: INTERIOR, 1949 ADDITION, CAFETORIUM, VIEW TO SOUTH (SITE CHECKED
02/13/2008)

PHOTOGRAPH 9: INTERIOR, 1949 ADDITION, TYPICAL CLASSROOM, VIEW TO NORTH (SITE
CHECKED 02/13/2008)

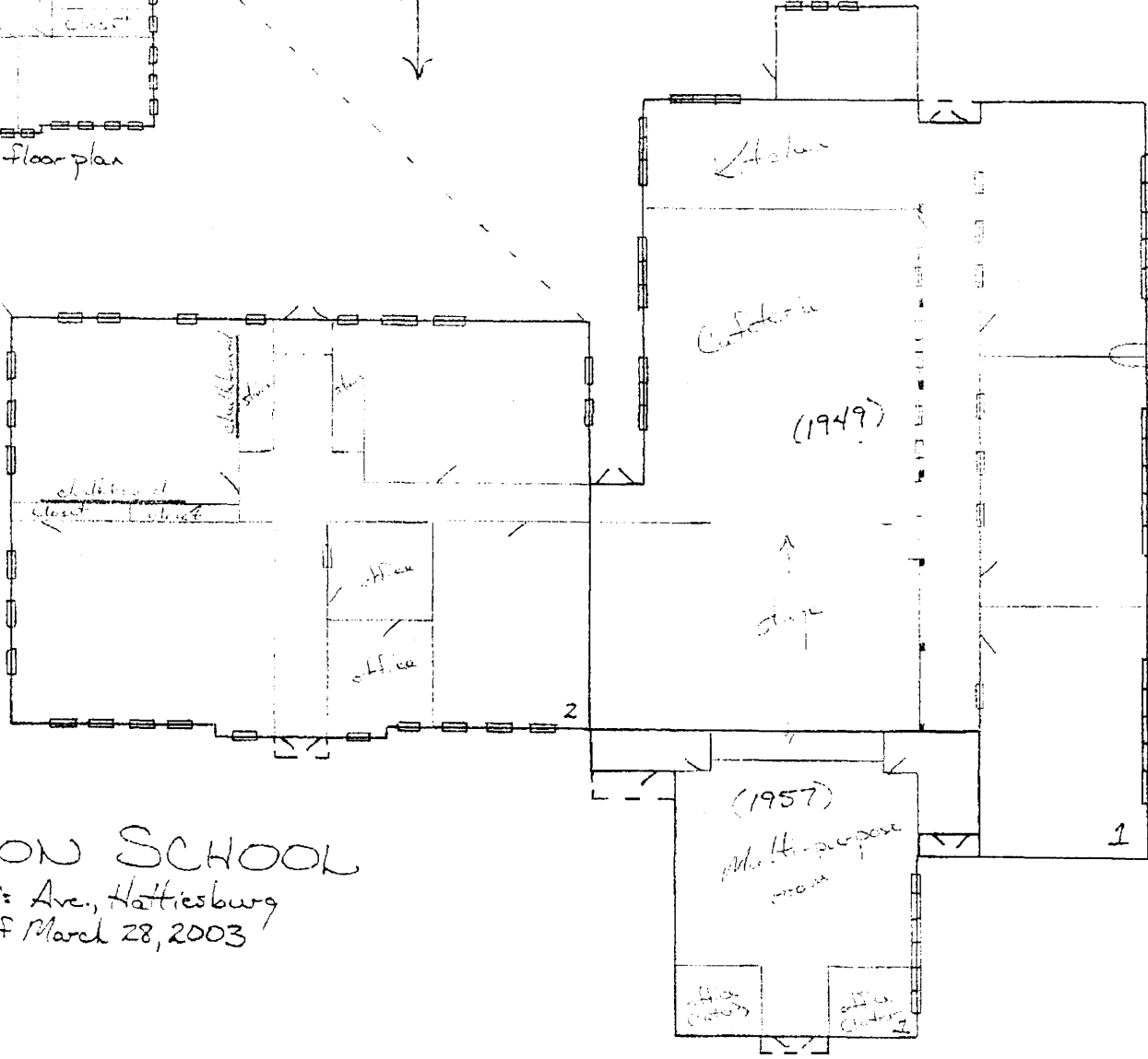
Laurel Ave.



Second floor plan



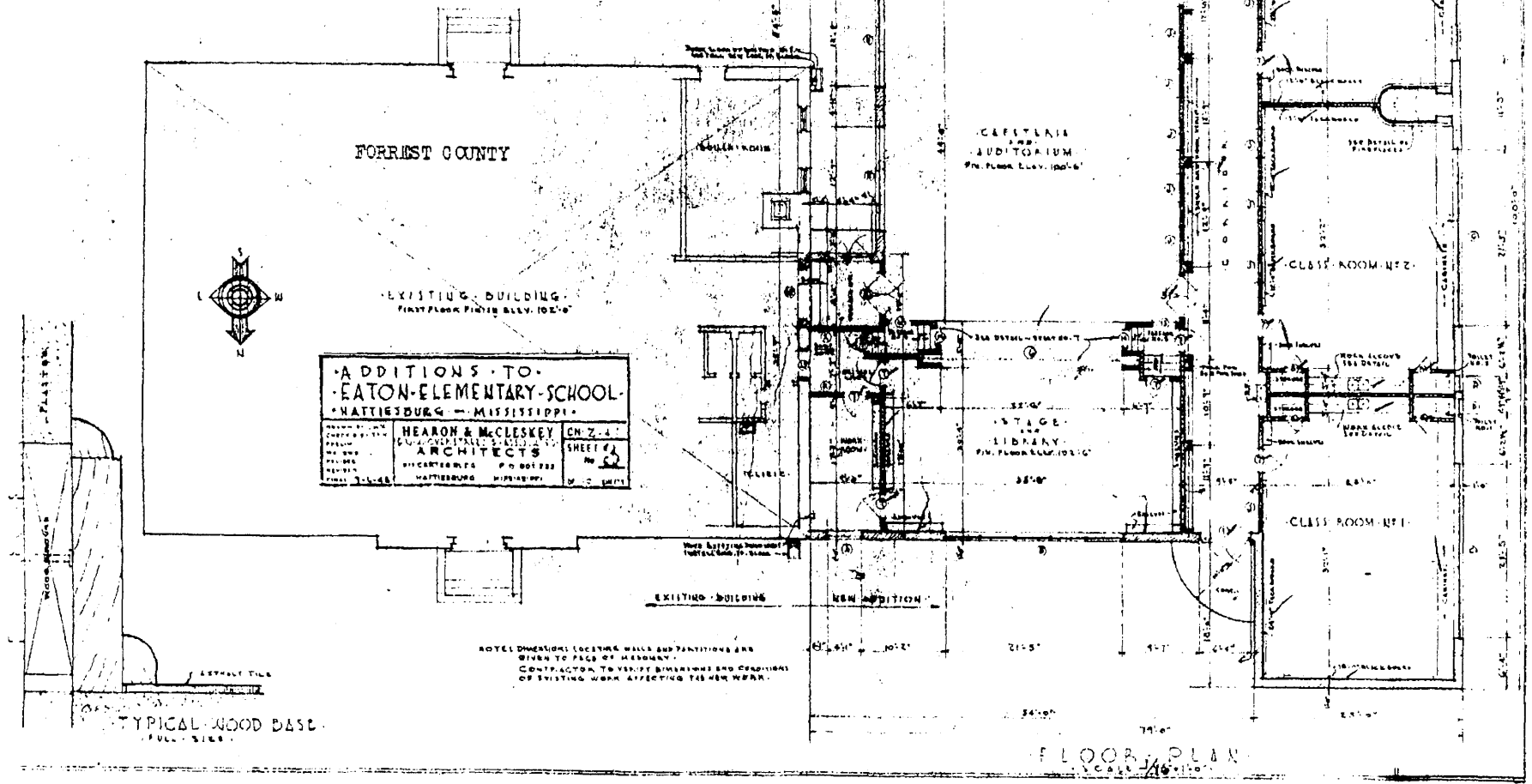
S. Tipton



Frederick

EATON SCHOOL
 McInnis Ave., Hattiesburg
 - as of March 28, 2003

NO.	UNIT SIZE	FRONT OPENING	FT. 20"	FT. 12"	FT. 6"	FT. 3"	FT. 0"	FT. 0"	COLLOCATION
1	4'-0" x 6'-0"	4'-0" x 6'-0"	1	3	1	0	0	0	LOFTS ON SMALL STRUCTURAL FRAMEWORK NO. 216 - SEE DETAIL
2	4'-0" x 6'-0"	2'-0" x 6'-0"	5	3	1	3	4	2	SAME AS UNIT NO. OF UNITS
3	4'-0" x 6'-0"	2'-0" x 6'-0"	5	4	1	3	4	2	LOFTS ON SMALL STRUCTURAL FRAMEWORK NO. 216 - SEE DETAIL
4	4'-0" x 6'-0"	2'-0" x 6'-0"	1	3	1	0	0	0	LOFTS ON SMALL STRUCTURAL FRAMEWORK NO. 216 - SEE DETAIL
5	4'-0" x 6'-0"	2'-0" x 6'-0"	1	3	1	0	0	0	LOFTS ON SMALL STRUCTURAL FRAMEWORK NO. 216 - SEE DETAIL
6	4'-0" x 6'-0"	2'-0" x 6'-0"	3	3	1	3	2	2	SAME AS UNIT NO. OF UNITS
7	4'-0" x 6'-0"	2'-0" x 6'-0"	3	4	1	3	2	2	SAME AS UNIT NO. OF UNITS
8	4'-0" x 6'-0"	2'-0" x 6'-0"	1	3	1	0	0	0	LOFTS ON SMALL STRUCTURAL FRAMEWORK NO. 216 - SEE DETAIL
9	4'-0" x 6'-0"	2'-0" x 6'-0"	1	3	1	0	0	0	LOFTS ON SMALL STRUCTURAL FRAMEWORK NO. 216 - SEE DETAIL
10	4'-0" x 6'-0"	2'-0" x 6'-0"	1	3	1	0	0	0	LOFTS ON SMALL STRUCTURAL FRAMEWORK NO. 216 - SEE DETAIL
11	4'-0" x 6'-0"	2'-0" x 6'-0"	1	3	1	0	0	0	LOFTS ON SMALL STRUCTURAL FRAMEWORK NO. 216 - SEE DETAIL
12	4'-0" x 6'-0"	2'-0" x 6'-0"	1	3	1	0	0	0	LOFTS ON SMALL STRUCTURAL FRAMEWORK NO. 216 - SEE DETAIL
13	4'-0" x 6'-0"	2'-0" x 6'-0"	1	3	1	0	0	0	LOFTS ON SMALL STRUCTURAL FRAMEWORK NO. 216 - SEE DETAIL
14	4'-0" x 6'-0"	2'-0" x 6'-0"	1	3	1	0	0	0	LOFTS ON SMALL STRUCTURAL FRAMEWORK NO. 216 - SEE DETAIL
15	4'-0" x 6'-0"	2'-0" x 6'-0"	1	3	1	0	0	0	LOFTS ON SMALL STRUCTURAL FRAMEWORK NO. 216 - SEE DETAIL
16	4'-0" x 6'-0"	2'-0" x 6'-0"	1	3	1	0	0	0	LOFTS ON SMALL STRUCTURAL FRAMEWORK NO. 216 - SEE DETAIL
17	4'-0" x 6'-0"	2'-0" x 6'-0"	1	3	1	0	0	0	LOFTS ON SMALL STRUCTURAL FRAMEWORK NO. 216 - SEE DETAIL
18	4'-0" x 6'-0"	2'-0" x 6'-0"	1	3	1	0	0	0	LOFTS ON SMALL STRUCTURAL FRAMEWORK NO. 216 - SEE DETAIL
19	4'-0" x 6'-0"	2'-0" x 6'-0"	1	3	1	0	0	0	LOFTS ON SMALL STRUCTURAL FRAMEWORK NO. 216 - SEE DETAIL
20	4'-0" x 6'-0"	2'-0" x 6'-0"	1	3	1	0	0	0	LOFTS ON SMALL STRUCTURAL FRAMEWORK NO. 216 - SEE DETAIL



(Rev. 10-90)

United States Department of the Interior

National Park Service

NATIONAL REGISTER OF HISTORIC PLACES

REGISTRATION FORM

1. Name of Property

historic name: Eaton Elementary School
other names/site number: Third Ward School

2. Location

street & number: 1105 McInnis Avenue not for publication
city or town: Hattiesburg vicinity
state: Mississippi code: MS county: Forrest code: 35 zip code:

3. State/Federal Agency Certification

As the designated authority under the National Historic Preservation Act of 1966, as amended, I hereby certify that this X nomination request for determination of eligibility meets the documentation standards for registering properties in the National Register of Historic Places and meets the procedural and professional requirements set forth in 36 CFR Part 60. In my opinion, the property X meets does not meet the National Register Criteria. I recommend that this property be considered significant nationally statewide X locally. (See continuation sheet for additional comments.)

Signature of certifying official Date

State Historic Preservation Officer
State or Federal agency and bureau

In my opinion, the property meets does not meet the National Register criteria. (See continuation sheet for additional comments.)

Signature of commenting or other official Date

State or Federal agency and bureau

4. National Park Service Certification

I, hereby certify that this property is:
Signature of the Keeper Date of Action
entered in the National Register,
See continuation sheet.
determined eligible for the
National Register
See continuation sheet.
determined not eligible for the
National Register
removed from the National Register
other (explain):

5. Classification

Ownership of Property: Public-local

Number of Resources within Property:
(Do not include previously listed resources in the count)

Category of Property:	Building	Contributing	Noncontributing	
		1		buildings
				sites
				structures
				objects
		1		Total

Name of related multiple property listing **Number of contributing resources previously listed**
(Enter "N/A" if property is not part of a multiple property listing.) **in the National Register** None
NA

6. Function or Use

Historic Functions: EDUCATION/school

Current Functions: VACANT/Not in Use

7. Description

Architectural Classification(s): LATE 19TH AND 20TH CENTURY REVIVALS/Romanesque Revival

Materials:

foundation: Concrete
roof: Asphalt shingles
walls: Stucco; brick
other

Narrative Description:

See Continuation Sheets

8. Statement of Significance

Applicable National Register Criteria

- X A Property is associated with events that have made a significant contribution to the broad patterns of our history.
- B Property is associated with the lives of persons significant in our past.
- X C Property embodies the distinctive characteristics of a type, period, or method of construction or represents the work of a master, or possesses high artistic values, or represents a significant and distinguishable entity whose components lack individual distinction.
- D Property has yielded, or is likely to yield information important in prehistory or history.

Areas of Significance

EDUCATION/ARCHITECTURE

Period of Significance

1905-1958

Significant Dates

1949; 1957

Criteria Considerations:

Property is:

- A owned by a religious institution or used for religious purposes.
- B removed from its original location.
- C a birthplace or a grave.
- D a cemetery.
- E a reconstructed building, object, or structure.
- F a commemorative property.
- G less than 50 years of age or achieved significance within the past 50 years.

Significant Person(s)**Cultural Affiliation(s)****Architect/Builder**1905: Robert E. Lee;
1949: Hearon & McClesky**Narrative Statement of Significance:**

See continuation sheets.

9. Major Bibliographical References

Bibliography

See continuation sheet.

Previous documentation on file (NPS)

- preliminary determination of individual listing (36 CFR 67) has been requested.
- previously listed in the National Register
- previously determined eligible by the National Register
- designated a National Historic Landmark
- recorded by Historic American Buildings Survey

- recorded by Historic American Engineering Record

Primary Location of Additional Data

- State Historic Preservation Office
- Other State agency
- Federal agency
- Local government
- University
- Other

Name of repository:

10. Geographical Data

Acreage of Property:

UTM References:	Zone	Easting	Northing	Zone	Easting	Northing
	A			C		
	B			D		

___ See continuation sheet.

Verbal Boundary Description See continuation sheet.

Boundary Justification: See continuation sheet.

11. Form Prepared By

name/title: Jennifer Baughn and William Gatlin

organization Mississippi Department of Archives and History

street & number: P.O. Box 570

city or town: Jackson

date: March 26, 2008

telephone: 601-576-6940

state: MS zip code: 39205-0571

Additional Documentation

Submit the following items with the completed form:

Continuation Sheets

Maps

A USGS map (7.5 or 15 minute series) indicating the property's location.

A sketch map for historic districts and properties having large acreage or numerous resources.

Photographs

Representative black and white photographs of the property.

Additional items (Check with the SHPO or FPO for any additional items)

Property Owner(s)

name: City of Hattiesburg

street & number: 200 Forrest Street, P.O. Box 1898

city or town: Hattiesburg

telephone: 601-545-4594

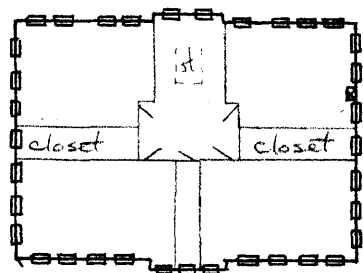
state: MS

zip code: 39403

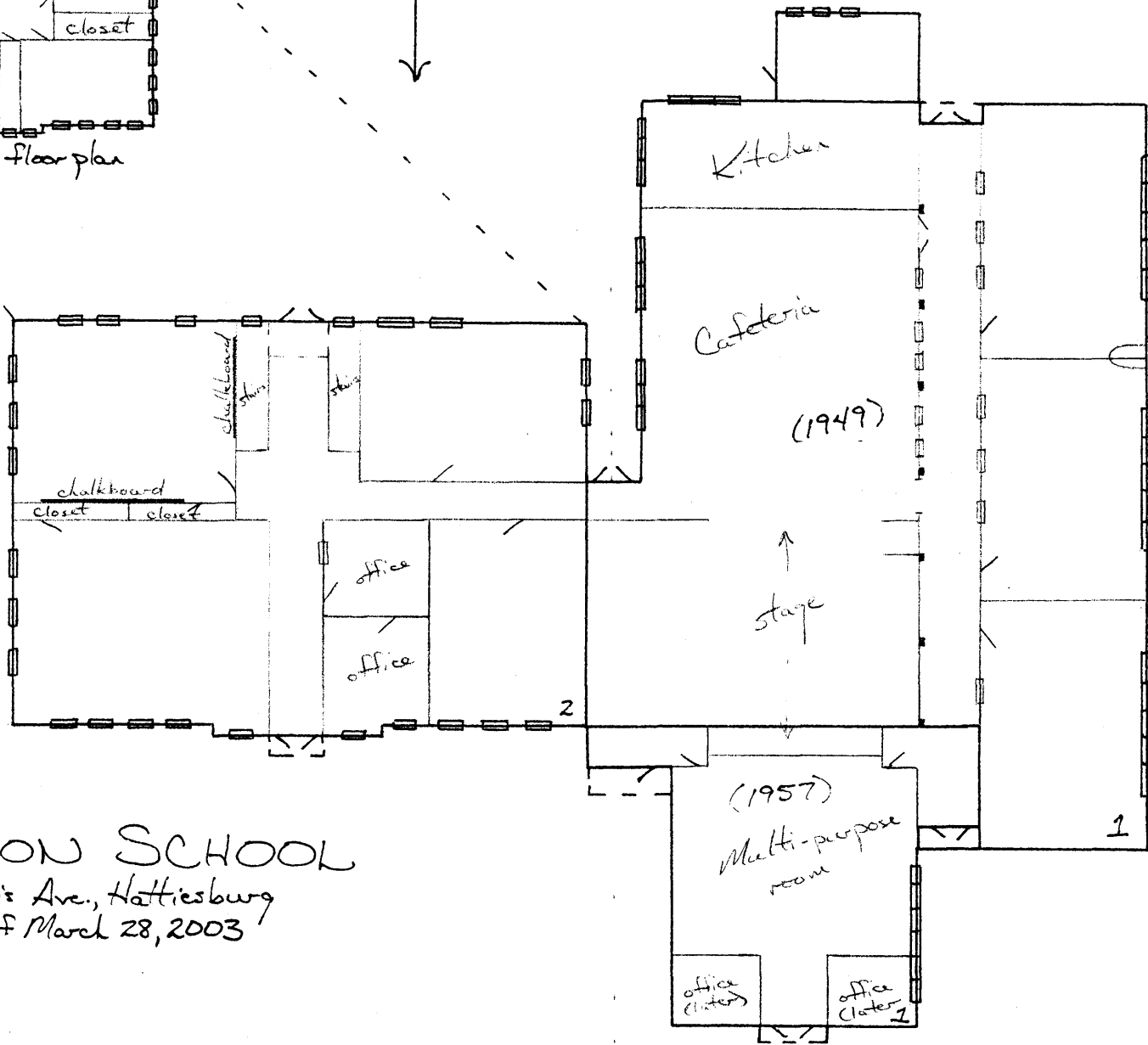
Paperwork Reduction Act Statement: This information is being collected for applications to the National Register of Historic Places to nominate properties for listing or determine eligibility for listing, to list properties, and to amend existing listings. Response to this request is required to obtain a benefit in accordance with the National Historic Preservation Act, as amended (16 U.S.C. 470 et seq.).

Estimated Burden Statement: Public reporting burden for this form is estimated to average 18.1 hours per response including the time for reviewing instructions, gathering and maintaining data, and completing and reviewing the form. Direct comments regarding this burden estimate or any aspect of this form to the Chief, Administrative Services Division, National Park Service, P.O. Box 37127, Washington, DC 20013-7127; and the Office of Management and Budget, Paperwork Reductions Projects (1024-0018), Washington, DC 20503.

Laurel Ave.



Second floor plan



S. Tipton

Frederick

EATON SCHOOL

McInnis Ave., Hattiesburg
-as of March 28, 2003

McInnis Ave