



UNITED STATES DEPARTMENT OF THE INTERIOR  
NATIONAL PARK SERVICE

NATIONAL REGISTER OF HISTORIC PLACES  
PROPERTY PHOTOGRAPH FORM

(Type all entries - attach to or enclose with photograph)

STATE	
COUNTY	
FOR NPS USE ONLY	
ENTRY NUMBER	DATE



MAY 19 1972

1. NAME

COMMON: Bayou Plaquemine Lock  
AND/OR HISTORIC:

2. LOCATION

STREET AND NUMBER:

CITY OR TOWN:

STATE:	CODE	COUNTY:	CODE
--------	------	---------	------

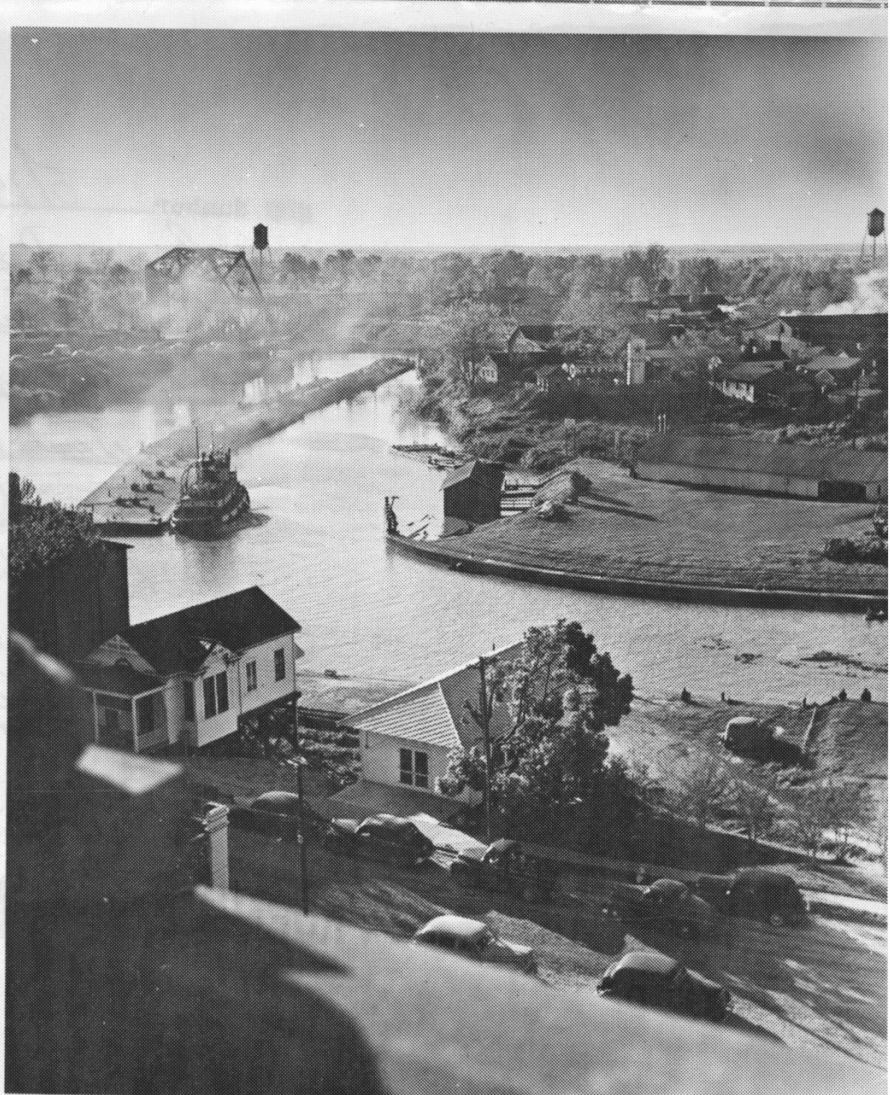
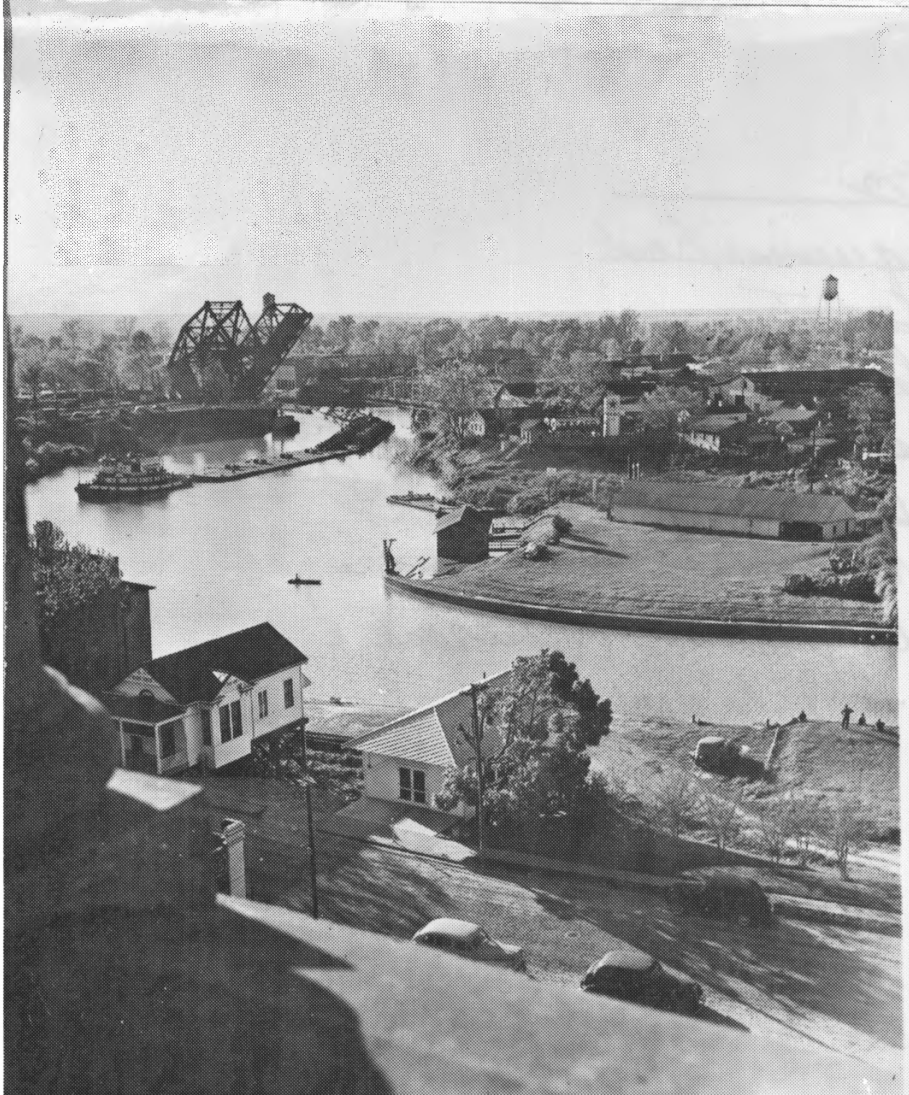
3. PHOTO REFERENCE

PHOTO CREDIT: Gary J. Hebert  
DATE OF PHOTO: 1972  
NEGATIVE FILED AT: Negative filed at Plaquemine Post, Plaquemine, La.

4. IDENTIFICATION

DESCRIBE VIEW, DIRECTION, ETC.  
View of lock looking north

SEE INSTRUCTIONS



NPS Number

5/19/72

Title:

Bayou Plaquemine Lock  
Oberville Cnty

Loc.

4 photographs in series showing Bayou  
Plaquemine immediately before entering  
lock with a view of upper & lower  
banks, & barges being guided up the  
bayou under bridges (railroad &  
partially visible HWY)



UNITED STATES DEPARTMENT OF THE INTERIOR  
NATIONAL PARK SERVICE

NATIONAL REGISTER OF HISTORIC PLACES  
PROPERTY PHOTOGRAPH FORM

(Type all entries - attach to or enclose with photograph)

STATE	
COUNTY	
FOR NPS USE ONLY	
ENTRY NUMBER	DATE
	MAY 19 1972

1. NAME

COMMON: Bayou Plaquemine Lock

AND/OR HISTORIC:

2. LOCATION

STREET AND NUMBER:

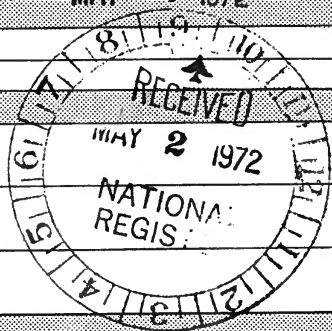
CITY OR TOWN:

STATE:

CODE

COUNTY:

CODE



3. PHOTO REFERENCE

PHOTO CREDIT: Grace de la Croix Daigre (deceased)

DATE OF PHOTO: Unknown

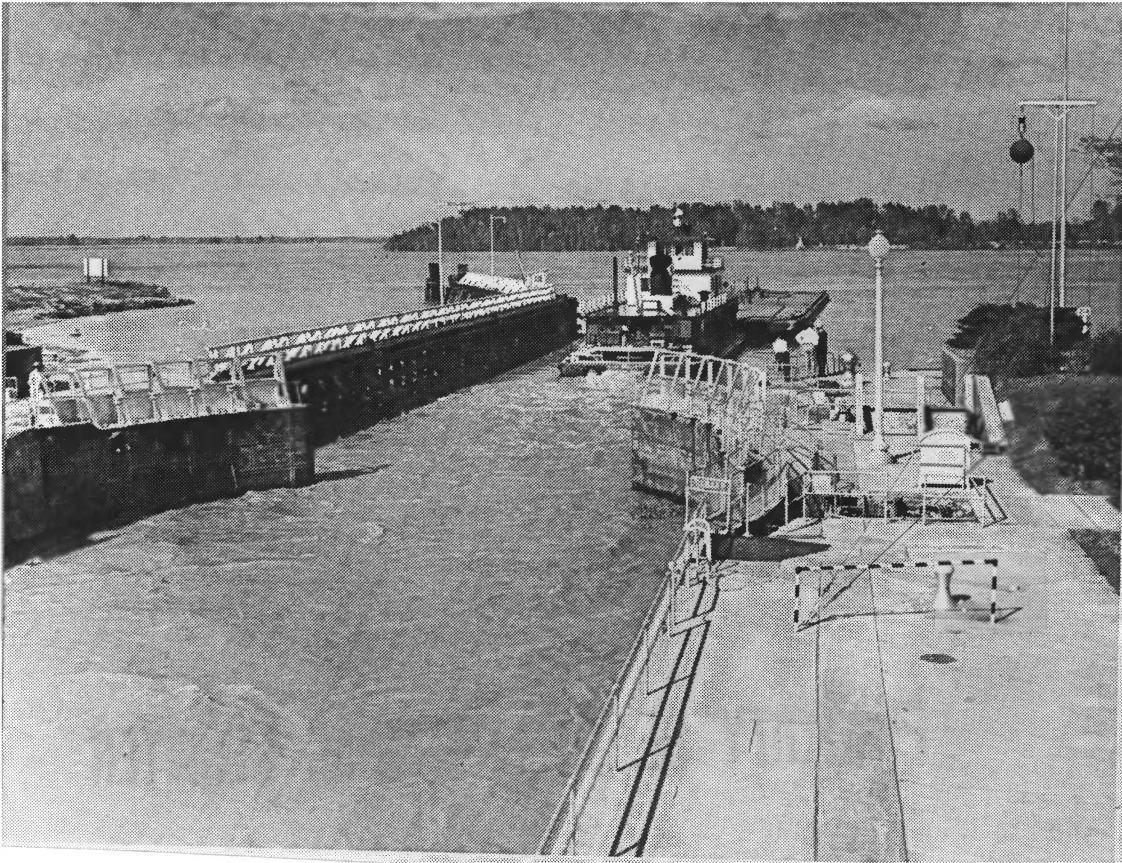
NEGATIVE FILED AT: Half tone negative filed with Plaquemine Post  
Plaquemine, La.

4. IDENTIFICATION

DESCRIBE VIEW, DIRECTION, ETC.

View from bell tower of St. John the Evangelist Catholic Church  
looking north

SEE INSTRUCTIONS



UNITED STATES DEPARTMENT OF THE INTERIOR  
NATIONAL PARK SERVICE

NATIONAL REGISTER OF HISTORIC PLACES  
PROPERTY PHOTOGRAPH FORM

(Type all entries - attach to or enclose with photograph)

STATE

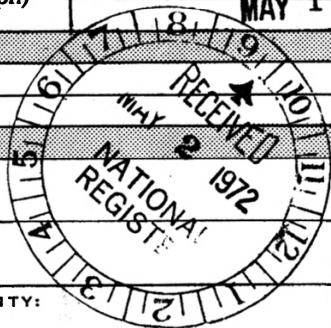
COUNTY

FOR NPS USE ONLY

ENTRY NUMBER

DATE

MAY 19 1972



SEE INSTRUCTIONS

1. NAME

COMMON: Bayou Plaquemine Lock

AND/OR HISTORIC:

2. LOCATION

STREET AND NUMBER:

CITY OR TOWN:

STATE:

CODE

COUNTY:

CODE

3. PHOTO REFERENCE

PHOTO CREDIT: Grace de la Croix Daigre (deceased)

DATE OF PHOTO: Unknown

NEGATIVE FILED AT: Half tone negative filed with Plaquemine Post  
Plaquemine, La.

4. IDENTIFICATION

DESCRIBE VIEW, DIRECTION, ETC.

View from south side of lock looking east, showing the river gate closing behind a tugboat and barges





UNITED STATES DEPARTMENT OF THE INTERIOR  
NATIONAL PARK SERVICE

NATIONAL REGISTER OF HISTORIC PLACES

PROPERTY PHOTOGRAPH FORM

(Type all entries - attach to or enclose with photograph)

STATE

COUNTY

FOR NPS USE ONLY

ENTRY NUMBER

DATE

MAY 19 1972

1. NAME

*Lock*

COMMON:

Bayou Plaquemine ~~and~~ Plaquemine

AND/OR HISTORIC:

2. LOCATION

STREET AND NUMBER:

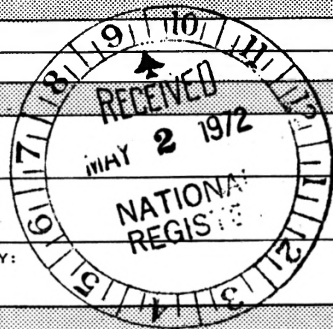
CITY OR TOWN:

STATE:

CODE

COUNTY:

CODE



3. PHOTO REFERENCE

PHOTO CREDIT:

Grace de la Croix Daigre (deceased)

DATE OF PHOTO:

Unknown

NEGATIVE FILED AT:

Half tone negative filed with Plaquemine Post  
Plaquemine, La.

4. IDENTIFICATION

DESCRIBE VIEW, DIRECTION, ETC.

View from bridge on La. Highway 1 across the Bayou looking southeast down the Bayou toward St. John the Evangelist Catholic Church (the bell tower) and the town of Plaquemine.

SEE INSTRUCTIONS



UNITED STATES DEPARTMENT OF THE INTERIOR  
NATIONAL PARK SERVICE

NATIONAL REGISTER OF HISTORIC PLACES  
PROPERTY PHOTOGRAPH FORM

(Type all entries - attach to or enclose with photograph)

STATE

COUNTY

FOR NPS USE ONLY

ENTRY NUMBER

DATE

MAY 19 1972

1. NAME

COMMON: Bayou Plaquemine Lock

AND/OR HISTORIC:

2. LOCATION

STREET AND NUMBER:

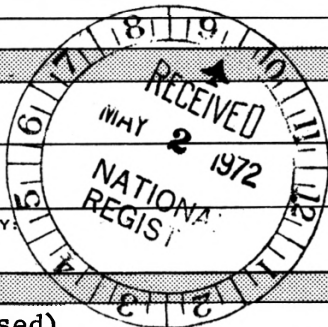
CITY OR TOWN:

STATE:

CODE

COUNTY:

CODE



3. PHOTO REFERENCE

PHOTO CREDIT: Grace de la Croix Daigre (deceased)

DATE OF PHOTO: Unknown

NEGATIVE FILED AT: Half tone negative filed with Plaquemine Post  
Plaquemine, La.

4. IDENTIFICATION

DESCRIBE VIEW, DIRECTION, ETC.

View from bell tower of St. John the Evangelist Catholic Church  
looking north northeast, showing the powerhouse

SEE INSTRUCTIONS



UNITED STATES DEPARTMENT OF THE INTERIOR  
NATIONAL PARK SERVICE

NATIONAL REGISTER OF HISTORIC PLACES  
PROPERTY PHOTOGRAPH FORM

(Type all entries - attach to or enclose with photograph)

STATE	
COUNTY	
FOR NPS USE ONLY	
ENTRY NUMBER	DATE
	MAY 19 1972

1. NAME

COMMON: Bayou Plaquemine Lock

AND/OR HISTORIC:

2. LOCATION

STREET AND NUMBER:

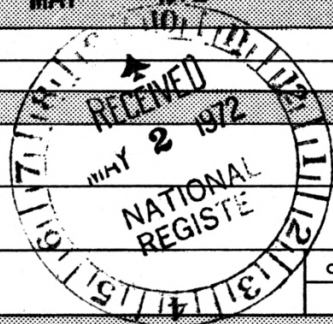
CITY OR TOWN:

STATE:

CODE

COUNTY:

CODE



3. PHOTO REFERENCE

PHOTO CREDIT: Gary J. Hebert

DATE OF PHOTO: 1972

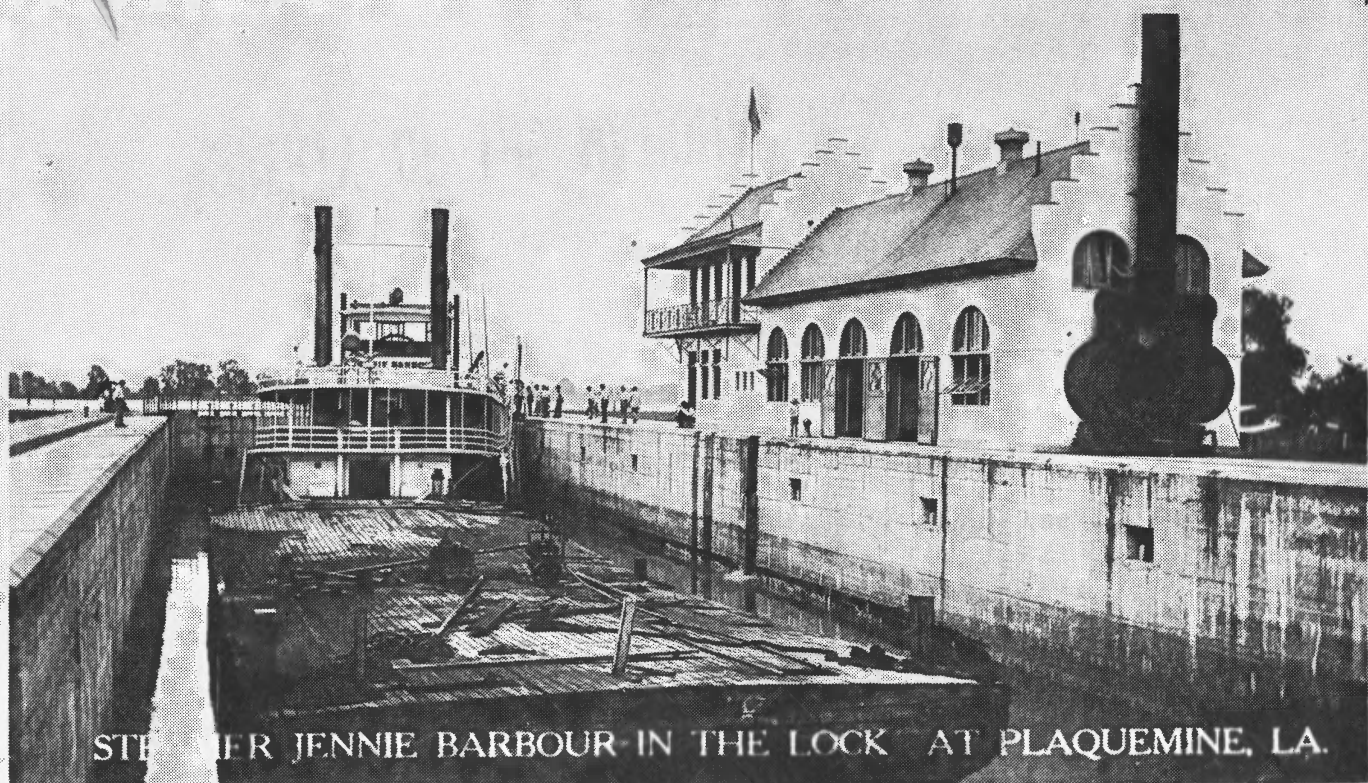
NEGATIVE FILED AT: Negative filed at Plaquemine Post, Plaquemine, La.

4. IDENTIFICATION

DESCRIBE VIEW, DIRECTION, ETC.

View of Lock and power house looking northeast

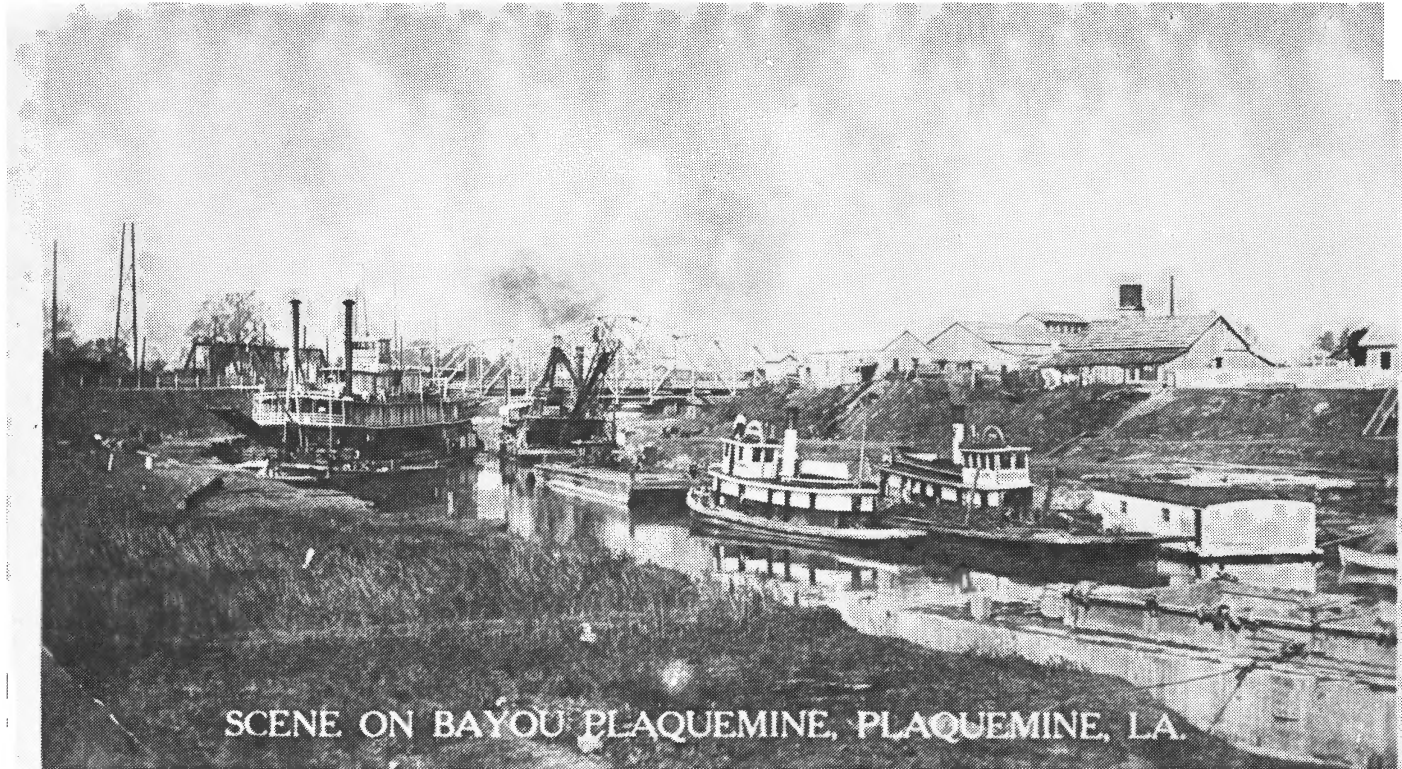
SEE INSTRUCTIONS



STEAMER JENNIE BARBOUR IN THE LOCK AT PLAQUEMINE, LA.



Sts. Ben Hur and F. M. Owens going through Locks at Plaquemine, La.



SCENE ON BAYOU PLAQUEMINE, PLAQUEMINE, LA.

NATIONAL REGISTER OF HISTORIC PLACES

PROPERTY PHOTOGRAPH FORM

(Type all entries - attach to or enclose with photograph)

STATE

COUNTY



ENTRY NUMBER

DATE

MAY 19 1972

1. NAME

COMMON: Bayou Plaquemine Lock

AND/OR HISTORIC:

2. LOCATION

STREET AND NUMBER:

CITY OR TOWN:

STATE:

CODE

COUNTY:

CODE

3. PHOTO REFERENCE

PHOTO CREDIT: Grace de la Croix Daigre (deceased)

DATE OF PHOTO: Unknown

NEGATIVE FILED AT: Half tone negative filed with Plaquemine Post  
Plaquemine, La.

4. IDENTIFICATION

DESCRIBE VIEW, DIRECTION, ETC.

Steamer Jennie Barbour in the Lock at Plaquemine, La.

Steamers Ben Hur and F. M. Owens going through Lock at Plaquemine, La.

SEE INSTRUCTIONS





MISSISSIPPI RIVER

U. S. GOVERNMENT  
LOCK - PLAQUEMINE

CITY OF PLAQUEMINE

BAYOU PLAQUEMINE

BAYOU PLAQUEMINE

BAYOU PLAQUEMINE

BAYOU PLAQUEMINE

1-11-57

Map Showing Bayou Plaquemine  
Compiled from composite aeri-als  
of the Bayou section by the U. S.  
Dept. of Agriculture, dated Jan.  
11, 1957.

30

COH-2T-129

INTERSECTION OF BAYOU  
PLAQUEMINE WITH GULF  
INTRACOASTAL WATERWAY

RECEIVED  
MAY 2 1972  
NATIONAL  
REGISTRY

NATIONAL REGISTER OF HISTORIC PLACES  
PROPERTY MAP FORM

(Type all entries - attach to or enclose with map)

STATE	
COUNTY	
FOR NPS USE ONLY	
ENTRY NUMBER	DATE
MAY 19 1972	

SEE INSTRUCTIONS

1. NAME *Lack*

COMMON:  Bayou Plaquemine, compiled from composite aerials

AND/OR HISTORIC: Bayou Plaquemine

2. LOCATION

STREET AND NUMBER:

U. S. Dept. of Agriculture

CITY OR TOWN:

STATE:

CODE

COUNTY:

CODE

3. MAP REFERENCE

SOURCE:

U. S. Department of Agriculture

SCALE: 1" = 660' 50% Reduction

DATE: January 11, 1957

4. REQUIREMENTS

TO BE INCLUDED ON ALL MAPS

1. Property boundaries where required.
2. North arrow.
3. Latitude and longitude reference.





Something went wrong while we were encoding this page.  
Please check the log file to find out the details.