

UNITED STATES DEPARTMENT OF THE INTERIOR
NATIONAL PARK SERVICE

FOR NPS USE ONLY

RECEIVED

NOV 01 1979 DEC 10 1980

DATE ENTERED

NATIONAL REGISTER OF HISTORIC PLACES
INVENTORY -- NOMINATION FORM

SEE INSTRUCTIONS IN HOW TO COMPLETE NATIONAL REGISTER FORMS
TYPE ALL ENTRIES -- COMPLETE APPLICABLE SECTIONS

1 NAME Bunker Hill Historical District

HISTORIC

AND/OR COMMON

2 LOCATION Bunker Hill extending on all three roads at the US 11 and Route 26 inter-
section, west on Rt. 26 to the railroad approximately 3 blocks east of Rt.
U. S. Route 11, at Mill Creek 26 and 3 blocks south on US11

STREET & NUMBER

NOT FOR PUBLICATION

CITY, TOWN

CONGRESSIONAL DISTRICT

VICINITY OF

STATE

CODE

COUNTY

CODE

3 CLASSIFICATION

CATEGORY

OWNERSHIP

STATUS

PRESENT USE

DISTRICT

PUBLIC

OCCUPIED

AGRICULTURE

MUSEUM

BUILDING(S)

PRIVATE

UNOCCUPIED

COMMERCIAL

PARK

STRUCTURE

BOTH

WORK IN PROGRESS

EDUCATIONAL

PRIVATE RESIDENCE

SITE

PUBLIC ACQUISITION

ACCESSIBLE

ENTERTAINMENT

RELIGIOUS

OBJECT

IN PROCESS

YES: RESTRICTED

GOVERNMENT

SCIENTIFIC

BEING CONSIDERED

YES: UNRESTRICTED

INDUSTRIAL

TRANSPORTATION

NO

MILITARY

OTHER

4 OWNER OF PROPERTY

NAME Multiple

STREET & NUMBER

CITY, TOWN

STATE

VICINITY OF

5 LOCATION OF LEGAL DESCRIPTION

COURTHOUSE, Berkeley County

REGISTRY OF DEEDS, ETC.

STREET & NUMBER

CITY, TOWN

STATE

Martinsburg, WV 25401

6 REPRESENTATION IN EXISTING SURVEYS

TITLE G-48, Berkeley County Historical Society & Berkeley County Historical
Landmarks Commission Survey

DATE

1973-78

FEDERAL STATE COUNTY LOCAL

DEPOSITORY FOR SURVEY RECORDS Berkeley County Courthouse

CITY, TOWN

STATE

Martinsburg, WV 25401

7 DESCRIPTION

CONDITION		CHECK ONE	CHECK ONE
<input type="checkbox"/> EXCELLENT	<input type="checkbox"/> DETERIORATED	<input type="checkbox"/> UNALTERED	<input checked="" type="checkbox"/> ORIGINAL SITE
<input checked="" type="checkbox"/> GOOD	<input type="checkbox"/> RUINS	<input checked="" type="checkbox"/> ALTERED	<input type="checkbox"/> MOVED DATE _____
<input type="checkbox"/> FAIR	<input type="checkbox"/> UNEXPOSED		

DESCRIBE THE PRESENT AND ORIGINAL (IF KNOWN) PHYSICAL APPEARANCE

1. Boyd's Store. A six bay brick, pre-Civil War house built in five row bond on a stone foundation. There are 2 inside end chimneys and a 3rd one about the middle of the ridge. The gable roof is slate. The house was built in two sections. The 3 bay east section of the front facade appears to be an independently built 3 bay house with a central door and inside end chimney. A window on the ground floor of the west gable end was a door as was a window in the rear facade of this section.
2. Jesse Brillhart House. The back section of the house was originally a 3 bay log , 2 story house built in 1851. The main frame section of the house was built at a later date. The chimney in the log section which served as the cooking area is built of stone half way up and then brick coped. The house is a pleasant blend of two construction periods and styles.
3. The Henson House. A 5 bay, 2 story, gable roofed frame house. The house has been enlarged.
4. The Gardner House. A 2 story, 2 bay, cubical house with a hipped roof and coupled window dormers.
6. Jesse Brillhart Store. This building was built as a store ca. 1852 and fulfills today the same function. Of log construction, it is covered on three sides with unplanned weatherboarding that could well be original. The front facade is covered with novelty siding. A two story rectangular building, the gable with decorative bead on the barge board, faces the street with the double door entrance as the middle of three bays. The three bay shed roofed entrance porch with square chamfered posts, was added ca. 1900. An old postcard picture of the building does not show it. The entrance consists of double doors, each having a small wood bottom panel and a large top panel of glass. These large glass openings can be protected by board and batten shutters that slide into wooden runners on the outside of the doors. The doors open inward so that when they are closed and locked, it is impossible to remove the shutters to break the glass. Inside, a large wooden bar with iron backing and handle fits across the doors. Above the doors is a four paned transom. The front windows are 2/2 double sash. Others are 6/6 double sash which are the original. The fenestration is of short lintel construction with a bead and moded backband. The ground floor windows also have board and batten shutters. The front window shutters are of double thickness. Closed, they are vertical board and batten, but when open, the boards are set diagonally. An iron bar hangs from one window jamb that is placed across the closed shutters. A large bolt is then passed through the shutter and the other window jamb and is secured on the inside. The west side door has a multi-paned window at the top and when closed is secured by the same type of sliding board and batten shutter as the front entrance doors. The side door is of double thickness construction and has two bottom panels below the glass on the outside but is of board and batten construction on the inside. The large box lock on this door has an attractive recessed panel for the keyhole. A large, decorative Victorian thumb latch lock secures the front entrance doors that are hung on decorative hinges. Not enough could be said in praise of the locks, bars, shutters, etc. that secure these windows and doors. The first floor interior of the store has been altered somewhat to meet the changing needs of a commercial establishment. It is and was just one large room. The old counters were removed and new ones installed. One of the old counters is stored on the second floor and another is in the barn behind the store. The old counters are of vertical beaded board (about 6") construction with two large 1" thick

UNITED STATES DEPARTMENT OF THE INTERIOR
NATIONAL PARK SERVICE

NATIONAL REGISTER OF HISTORIC PLACES
INVENTORY -- NOMINATION FORM

FOR NPS USE ONLY	
RECEIVED	
DATE ENTERED	NOV 01 1979 DEC 10 1980

Bunker Hill Historical District

CONTINUATION SHEET

ITEM NUMBER 7 PAGE 2

tongue and groove joined pine boards for counter tops. These attractive counters are in very good condition. There were three counters in the ground floor room and one upstairs. The three downstairs were placed in a "U". Behind the counters were rows of wall shelves, some of which are still here, that displayed the goods and produce. Across the rear of the store is a platform area on one end of which is an office of plain vertical board construction and a sliding paned-glass window. In the front of the store was a large pigeon hole desk, now stored in the barn. This area was the Bunker Hill Post Office until a new post-office building was built next door. Some of the flooring has been replaced which is to be expected with the hard use of a store area. There is both an interior and exterior stair access to the second floor. The interior access is in the NE corner and consists of a wide, worn enclosed winder stairs. The first floor enclosure is constructed of beaded boards but that on the second floor is of rough unplanned boards. The two vertical-panel doors has a tortoise shell knob. This access is blocked so the exterior stair must be used. The second floor has three rooms that are partitioned with plain 8" board walls (no bead). One large room is in the front and two small rooms are across the back. These have beaded board and bevelled batten doors with tortoise shell knobs on box locks. One reads, "Patented May 5, 1863" and "June 7, 18 ". The other lock reads "D.M. & Co. New Haven" (no dates). They are alike and are probably the obverse and reverse of the same lock. The window sashes are 6/6 double sash and are made with square pegs at the muntins and the beaded facings have a backband molding of a fillet and ovolo. The floors are 10" tongue and groove pine. Access to the attic is in the SE room and is a straight flight open riser stairs with a beaded stringer and no railing. The pegged rafter poles are certainly the original and the squarish brick chimney curves slightly to break the roof at the ridge. This chimney rises through the middle of the building and served stoves on the first and second floors. On the second floor the attic floor joists are exposed which adds a rustic air. The store has a heavy stone foundation with a shelf or platform made by extending the foundation wall inward. Most of the beams are hewn but a few still have some bark. The door is a large board and batten. This wonderful building more than qualifies for listing on The National Register of Historic Places on architectural value. The fact that it was originally built as a store, is still used as a store, and retains its floor plan, partitions, old stairs, security features, hardware, trim, floors, and nearly everything else would easily warrant such a listing. The Bunker Hill Store is in excellent condition. The garage is just behind. A small building, it was constructed ca. 1920, to house an early car which were much smaller than they are today. The gable roof has enclosed eaves. The windows are built in the lintel fashion with molded facings. The door is four-paneled and is a sliding door. The building is constructed of narrow rolled siding that is painted gold and brown. It is in good condition and has a neat appearance and is relatively unchanged. The small two story barn is constructed of weatherboard. A large double door on runners is the main entrance in the gable end. Above this is a board and batten door with a 2/2 double sash window on either side. These 2/2 windows were in another shop. The original windows in the barn were 6/6. A very nice arcaded bargeboard decorates the gable and is carried down the sides as an open cornice. On the ground floor are corn cribs. In the center open area are stored many interesting items dating from the turn-of-the century. There are two cutter sleighs and a regular two seater sleigh. A fancy Sunday buggy is in very good condition. The second floor has grain bins on each side. These bins are constructed of large horizontal beaded boards and are in

UNITED STATES DEPARTMENT OF THE INTERIOR
NATIONAL PARK SERVICE

NATIONAL REGISTER OF HISTORIC PLACES
INVENTORY -- NOMINATION FORM

FOR NPS USE ONLY

RECEIVED

DATE ENTERED

Bunker Hill Historical District

CONTINUATION SHEET

ITEM NUMBER 7 PAGE 3

excellent condition. A pulley system with a large wooden wheel is suspended from the rafters. This was used to lift and lower grain bags through a trap door. The floor is made of 1 1/4" pine boards. Rafters are smooth round logs with a ridge pole. On the second floor are stored several things from the early days of the Bunker Hill Store. Among them are the pigeon hole desk that was used as the post office; the "loafer's" benches that were outside the store on the porch and one of the long wooden counters. The two flight open riser stair that leads to the second floor is of heavy construction with well worn treads. This wonderful building was probably constructed ca. 1860 or before, and certainly qualifies for listing on The National Register.

8. Joel Ward Log House. The two story log house built ca. 1850 as a two story log house with one story ell with exterior stone chimney ca. 1875. A west bay was added and the ell was then raised to two stories; behind the log house is an earlier log cabin which is a one and a half story log cabin covered with wide weatherboards. The east side of the building contains the main entrance which is composed of a one story, one bay shed roofed entrance porch, supported by two upright logs and a board and batten entrance door beside a small 6/6 double sash window.

9. Lamson House. A four bay, two story frame house with central brick chimney on the gable roof. The roof extends in the rear in "salt box" fashion. The house was constructed in at least two sections as there is a break in the weatherboarding between the first and second bays on the left side of the front facade. This is probably a remodeled pre-Civil War house.

10. North Music School. A four bay limestone two story building with a gable roof and measures approximately 42' wide x 24' deep. Except for a plain brick cornice, there is little exterior trim. It is a central hall plan with one room each side.

11. The blacksmith shop is a small 1 1/2 story, three bay ^{part} stone building. The entrance door to the basement room is in the rear of the building where it is at ground level. The main floor is divided into two rooms with an attic space. Access to the main floor from the basement is by a ladder through a trap door. There is a small firebox in the basement which was used mainly as the work area. The main floor has been divided into two rooms. The larger room is served by the small firebox. This room has been paneled with narrow beaded boards laid horizontally. This building is in bad condition.

13. Lemon Log House. A two story log house three bays wide with gable roof. This house has been remodeled. Some of the logs have been exposed on the interior.

14. Samuel Cline House. This 2 story, gable roof house is "L" shaped, the front section being three bays by one bay and a three bay two story ell, which has a two tiered West Virginia recessed porch on one side, extends to the rear. This very attractive house was built at the turn-of-the century.

UNITED STATES DEPARTMENT OF THE INTERIOR
NATIONAL PARK SERVICE

FOR NPS USE ONLY

NOV 01 1979

RECEIVED

DEC 10 198

DATE ENTERED

NATIONAL REGISTER OF HISTORIC PLACES
INVENTORY -- NOMINATION FORM

Bunker Hill Historical District

CONTINUATION SHEET

ITEM NUMBER 7

PAGE 4

15. The George Henson House is one and one half story bungalow. Has a double pile plan with a central rear hall and two rooms on the second floor. The house is constructed of stucco and has stick-style accents. Exposed decorated eaves highlight the roof line and triangular frame supports with pyramidal caps on the roof overhang at the gable ends. The house has the double gable front associated with bungalow houses and the stucco porch has the same decorator accents as the main house. The house was constructed ca. 1920.

16. The Boyd House. A two story, gable to front, three bay rectangular building. It has many similarities to the Bunker Hill Store. The house was virtually "trimmed-out" in the late 19th century.

17. Bunker Hill Methodist Church. A very handsome brick Gothic Revival building built ca. 1912 in six row common on a high stone foundation, the new Methodist Church has a cruciform plan. All fenestration is Gothic arched and have corbelled arched brick surrounds. The tower is tucked in the recess made by the junction of the front (west) and south sections and has a pyramidal roof over round arched louvred belfry windows. The middle section is decorated by small bull's eye windows and brick dog tooth courses separate the different tower sections. The entrances have peaked tracery trignasoms over fine panelled doors. The outstanding feature of the church is the tracery windows. These large windows have three lozenge sections over three Gothic arched double sash windows under one large arched facing. They are magnificent. Those on the sides are further flanked by an additional 1/1 double sash arched window. Themes are in red circle glass and include Aladdin's lamp, Star of David, the crown and cross, sheaf of wheat, the ten commandments, the Alpha and Omega, and the anchor. Scenes are Christ knocking at the door and Christ as a shepherd. The memorial donor is etched in a red glass name plate at the bottom. Much of it is marbelized patterned glass in greens, ambers, violets, and blues. Seating is arranged in amphitheater fashion. The pews have foliated scrolled arm rests and Gothic arched paneled ends. Around the minister's station, which is furnished with Gothic pieces with a pierced quatrefoil motif, is an arcaded balustrade on small but full Corinthian columns. A large two story brick addition is on the rear of the church.

18. The Parsonage. The house is a two story, gable roof building of frame construction in the late Victorian Gothic style. It is covered with aluminum siding and, in the process, lost most of the "gingerbread" trim. In the entrance facade is the main entrance door and a large gabled bay window. There is no gable decoration. The one story entrance porch extends across the front with four round columns and two like pilasters and a balustrade of square spindles. The flat porch roof also carries a balustrade in a more decorative Chinese Chippendale design. The roof is of patterned slate and one corbelled brick interior chimney sits on the ridge. On the north side is a coupled window. Windows are 2/2, 1/1 double sash, and the bay has a multi-paned top sash/1. On the rear of the building was a large sun porch that has been enclosed and paneled for a den and utility area. The plan of the house is two rooms wide and two rooms deep with the entrance hall containing the main stairs in the front SW room. The open string stair goes to the second floor in two flights.

UNITED STATES DEPARTMENT OF THE INTERIOR
NATIONAL PARK SERVICE

FOR NPS USE ONLY

RECEIVED

DATE ENTERED

**NATIONAL REGISTER OF HISTORIC PLACES
INVENTORY -- NOMINATION FORM**

Bunker Hill Historical District

CONTINUATION SHEET

ITEM NUMBER 7 PAGE 5

Two round turned spindles are on each step. The newel post is a large turned one with a knob. The original doors are four panel. Some of these remain but others have been replaced with unpaneled plain doors, very unattractive. The parlor contains the only fireplace. It has a very attractive mantel with a pierced design on the frieze. The interior trim is symmetrically molded with large corner blocks which have a pierced flower design. These projected above the doors but most were lowered as the ceiling was lowered. A picture of the house taken in 1899-1903 shows the gabled bay window and the small gable over the entrance bay. Both gables had a three section round arched window under a small open gablet. The entire entrance gable has been removed and the roof straightened. The three section window in the bay has been hidden with aluminum siding.

The Black Row of Bunker Hill

19. Mt. Tabbr Baptist Church. A one story gable roof building of frame construction (novelty siding) painted white with green trim on a stone foundation. The west gable end is toward the street. The entrance consists of two ladder panel doors with a white porcelain knob. To the right of the entrance is the program window. The trim is of full lintel construction, plain with a cap molding and there are corner posts. The stairs are concrete. On the gable and down the sides of the building is a plain box cornice and frieze board, which has a clipped rounded corner on the gable return. A date block is in the foundation of the front SW corner that reads: Mt. Tabor Regular Baptist Church 1888. The date stone reads Mt. Tabor but the program window reads Mt. Tablor. The church is three bays long. A three bay addition of novelty siding was added to the rear making it a total of six bays. The addition sits on concrete blocks, not a full foundation. The outstanding feature of the building is the Gothic stained glass windows. These are set using plain wooden spandrels into the regular straight topped window frame which has a small decorative cap mold. Each of the three windows on each side is a stained glass window in this manner. These windows are double sash, the bottom sash being a fill design of opaque colors of browns, greens, blues, and violets. The top Gothic arched window is divided into three sections with heavy wooden tracery. A vine motif is in the top two panels and the larger third panel contains a theme motif on a shield of a crown and cross, grapes, crossed keys, and others. This is a lovely building. All interior walls are fully wainscotted as is the ceiling with narrow beaded boards. The pews are of plain board construction with a small round cap mold on the back and top of the straight but gently sloping sides. The minister's station is a paneled Gothic Revival stand with chamfered edges. The floor is pine of four and five inch boards. The small graveyard is grown up with weeds.

20. and 21. are three bay houses with a gable roof and a small one bay, two story ell both built in 1918.

22. A two story, two bay house of stucco with a small two story ell in the rear built 1930.

23. A small modern one and a half story, three bay bungalow with two large coupled window corners.

UNITED STATES DEPARTMENT OF THE INTERIOR
NATIONAL PARK SERVICE

NATIONAL REGISTER OF HISTORIC PLACES
INVENTORY -- NOMINATION FORM

FOR NPS USE ONLY

RECEIVED

NOV 01 1979

DEC 10 1980

DATE ENTERED

Bunker Hill Historical District

CONTINUATION SHEET

ITEM NUMBER 7 PAGE 6

24. A small two story, three bay log house. The small windows are 2/2 double sash. A small six panel casement window is in the north gable beside an interior corbelled brick chimney.
28. A two story, gable roof building in a restrained late Victorian Gothic style. The gable facade is the front of the building which is rectangular in shape and is two bays wide by three bays long. In the gable is a diamond window. A large entrance porch curves around the house on three sides.
29. New Presbyterian Church. This building was originally constructed in 1854 but during the Civil War it was used as a stable and heavily damaged. The church takes its present style from the 1879 rebuilding which was quite extensive. The arch motif apparent through the round-headed windows and their triple header brick arch lintels, the outside header arch being in relief as a drip mold, would identify this as a Romanesque Revival building, some-time also called the "Round Style." The building is constructed of brick laid in five row common bond on a stone foundation. The three bay sides of the building are highlighted by the arched 1/1 double sash windows which have a colored glass border in each sash. A plain cornice extends along the sides. In 1974, the rear addition was built extending the sides (or length) only an additional bay (to four bays). The addition is a two story one with a window on both the first and second floors. The roof was simply extended to cover. The entrance is in the east gable facade which also has a plain cornice with short returns. The main feature here is the tower pavillion that was added ca. 1900 to house the bell donated by Mr. Brown LeFevre. The tower was constructed to blend with the earlier style of the church but Gothic designs were experiencing a rebirth at this time so it is not surprising that along with Romanesque features, some Gothic features are also present. Again, there are round-headed windows but with plain 1/1 double sashes. The triple arch has been duplicated over the windows and main entrance. The corners have brick pilasters. The entrance consists of two, two-panel doors with bolection molding. A fanlight is above the entrance. On the second level is a three-section arched opening containing three double sash 1/1 plain windows with brick facings. One of these sashes has frosted glass and another has amber. They were all probably tinted or treated originally in some way. Now, the rest are simply of plain, clear glass. A dog-tooth brick course marks the second floor line around the tower. Above this in the tower gable is a round window with a header arch. On top of the tower roof rests the shingled base with splayed eaves that supports the belfry. The open square belfry has two arched openings on each side with a pierced railing. A scalloped cornice highlights the small hip roof of the belfry upon which rests a smaller hipped roof area with rectangular openings all crowned by a sawn wood finial. The entire building has a black shingle roof.
30. John Harley Miller House is a two story gable roofed building with a one story rear ell. It is frame construction of novelty siding. The one story ell is constructed of weatherboard and has a mixture of windows like the main house, built 1880.
31. The Mona E. Grantham House is a two story frame house with novelty siding and a hip roof of patterned slate. The two small brick chimneys rest just outside the hips. The front is three bays wide with a Victorian entrance porch of four turned posts that extends not quite across the house. A small two bay, one story addition is on the east side of the building. It was built in 1880.

UNITED STATES DEPARTMENT OF THE INTERIOR
NATIONAL PARK SERVICE

FOR NPS USE ONLY

RECEIVED

DATE ENTERED

**NATIONAL REGISTER OF HISTORIC PLACES
INVENTORY -- NOMINATION FORM**

Bunker Hill Historical District

CONTINUATION SHEET

ITEM NUMBER 7 PAGE 7

32. Old Methodist Church. This particular type of rectangular church building with its typical fenestration has long been established as a true classic in American Greek Revival architecture. The entrance is in the two bay east gable end which is constructed of brick laid in Flemish bond and three bays of coupled 4/4 double sash windows highlighted the sides of the building which is built in five row common bond. The two bay rear gable wall has two 6/6 double sash windows with brick flat arches. Only the front and rear facades have not been altered. The building sits on a stone foundation. The cornice on the gable is heavy and plain with short returns in the classic style. A lovely brick dental cornice extends along the sides. The church was abandoned in 1912 and used as a school for a number of years and then turned into a gymnasium.
7. Originally built as a storage shed, the building has been so modernized that it no longer has its identify; on the front facade but still has its identity on the other three therefore it is complementary to the district.

The Bunker Hill Historical District includes the older section of the village and Black Row. A few houses extend on the south side of the village built ca. 1930. A used car lot is on the northwest corner of Route 11 and Runnymeade Road. Whatever historical buildings existed here have been demolished. The historic Morgan Chapel is located at some distance from the village on the west side of the Pa. Railroad which is used as a boundary line.

SIGNIFICANCE

PERIOD	AREAS OF SIGNIFICANCE -- CHECK AND JUSTIFY BELOW			
<input type="checkbox"/> PREHISTORIC	<input type="checkbox"/> ARCHEOLOGY-PREHISTORIC	<input type="checkbox"/> COMMUNITY PLANNING	<input type="checkbox"/> LANDSCAPE ARCHITECTURE	<input checked="" type="checkbox"/> RELIGION
<input type="checkbox"/> 1400-1499	<input type="checkbox"/> ARCHEOLOGY-HISTORIC	<input type="checkbox"/> CONSERVATION	<input type="checkbox"/> LAW	<input type="checkbox"/> SCIENCE
<input type="checkbox"/> 1500-1599	<input type="checkbox"/> AGRICULTURE	<input type="checkbox"/> ECONOMICS	<input type="checkbox"/> LITERATURE	<input type="checkbox"/> SCULPTURE
<input type="checkbox"/> 1600-1699	<input checked="" type="checkbox"/> ARCHITECTURE	<input type="checkbox"/> EDUCATION	<input checked="" type="checkbox"/> MILITARY	<input type="checkbox"/> SOCIAL/HUMANITARIAN
<input type="checkbox"/> 1700-1799	<input type="checkbox"/> ART	<input type="checkbox"/> ENGINEERING	<input checked="" type="checkbox"/> MUSIC	<input type="checkbox"/> THEATER
<input checked="" type="checkbox"/> 1800-1899	<input type="checkbox"/> COMMERCE	<input checked="" type="checkbox"/> EXPLORATION/SETTLEMENT	<input type="checkbox"/> PHILOSOPHY	<input type="checkbox"/> TRANSPORTATION
<input checked="" type="checkbox"/> 1900-	<input type="checkbox"/> COMMUNICATIONS	<input type="checkbox"/> INDUSTRY	<input type="checkbox"/> POLITICS/GOVERNMENT	<input type="checkbox"/> OTHER (SPECIFY)
		<input type="checkbox"/> INVENTION		

SPECIFIC DATES

BUILDER/ARCHITECT

STATEMENT OF SIGNIFICANCE

Bunker Hill is significant for its Civil War history, log buildings and black row. It is a rural village which just never developed though several attempts were made. It is located on U.S. Route 11, the early old wagon road to Winchester, Va. At the crossroads of the old South Branch Road which ran from the Frederick County line to Smithfield (Middleway in Jefferson Co.). A further seemly advantage for development was the fact that it was located on Mill Creek amidst Berkeley County's most heavily populated mill area. Within a mile, for many years, were six mills. Most of the land here belonged to Gen. Elisha Boyd. For some 20 years (1820 to 1841) here General Boyd had his own industrial village-two mills, brick plant, cooper shop and in the 1830s he built a large brick building which was used as store. (1) This architecturally outstanding building is the only one of his buildings which remains today. The east end of the district was developed by Joel Ward who owned the next mill east of Gen. Boyd's mills. In 1831 Joel Ward sold 1/2 acre to William Cleveland and Jacob Myers for \$10.00. Here the first store of the town was built. It was purchased in 1846 by Charles S. North who taught music. The building became known as the North Music School. (2) Joel Ward built a log cabin and house. (3) After his death in the 1850s this, along with other lots, were sold. Gen. Boyd deeded a lot to the Methodists along Runnymede Road to erect a meeting house in 1839. After his death in 1841 the Edgewood house and mill lot went to son, John Boyd, who made an attempt to develop a town. He sold off a few lots. Two outstanding buildings-the Jessie Brillhart store and log house were erected. (4) In 1854 he sold a lot to the Presbyterians to erect a church and a lot for a school which is no longer standing. After the Civil War John Boyd lost Edgewood Manor plantation. On April 1, 1880, Charles J. Faulkner sold 78 acres to Christian F. Laise. This was the part of the Edgewood land which lay on the east side of Route 11. Laise divided part of this land into lots. Laise had given a Deed of Trust on the land to Faulkner; by 1889 both were dead. A suit was brought in Chancery and most of the lots were resold to pay the debt. The 9 most eastern lots had been sold off to the black people. On the two most southern lots there had been established a cemetery and church. (5) Even this was resold at a cost of \$125.00 to the black Mt. Tabor Congregation Trustees. They had originally had purchased the lots for \$125.00 from Christian Laise in 1883. This Black Street or Row is the best representation of the freed colored people in Berkeley County. This street was developed by the freed black man. A log house was built on each lot. Only one of these remains today. (6) The row is still owned by black people and the church is an active church. Bunker Hill basically served a rural community-the area in the southeastern end of Berkeley Co. with 3 stores (the Brillhart store in operation) and 4 churches - Methodist, Presbyterian and Episcopal (the Morgan Chapel is near the western edge of the town) and the black church. It had a white school and a black school which has been turned into a house and is near the northeastern district line. One of the most important historical facts of the village is the part it played in the Civil War. Two of its most historic buildings are the Old Methodist Church and the Presbyterian Church. (7) The Presbyterian Church was almost destroyed during the War with virtually just a shell of a building left. The Old Methodist Church building had many uses during the War. A copy of letter sent to the U. S. Government in 1869 asking for money to repair the Church shows a verification of the great involvement of the Methodist Church building and Bunker Hill in the Civil War.

9 MAJOR BIBLIOGRAPHICAL REFERENCES

10 GEOGRAPHICAL DATA

ACREAGE OF NOMINATED PROPERTY 1/4 acres

UTM REFERENCES

A	17	754160	4357650
	ZONE	EASTING	NORTHING
c	17	753870	4357510

B	17	754030	4357470
	ZONE	EASTING	NORTHING
D	17	753790	4357710

VERBAL BOUNDARY DESCRIPTION

Beginning at the main crossroad, thence North along Winchester Pike 150 ft, thence East 400 ft., thence South 150 ft. to the Smithfield road, thence east along it 500 ft., thence South 150 ft, thence West 500 ft., thence south along the back lines of lots 550 ft to the southeast corner of the cemetery, thence West along it 350 ft, thence North 50 ft, thence West about 180 ft to the east side of the Winchester Pike, thence along the east side north 250 feet, thence crossing the Pike and along a lot line west 150 feet, ~~thence north 100 feet, thence west 250 feet to the east side of the railroad~~ thence along it north 200 feet to the road, thence along it east 400 ft. to the beginning

LIST ALL STATES AND COUNTIES FOR PROPERTIES OVERLAPPING STATE OR COUNTY BOUNDARIES

STATE	CODE	COUNTY	CODE
STATE	CODE	COUNTY	CODE

11 FORM PREPARED BY

NAME / TITLE Don C. Wood, Genealogist, Historian, Historic Archeologist

ORGANIZATION President, Berkeley County Historical Society
Chairman, Berkeley County Historical Landmarks Commission

DATE

STREET & NUMBER
Route 3, Box 79

TELEPHONE

CITY OR TOWN
Martinsburg, WV 25401

STATE

12 STATE HISTORIC PRESERVATION OFFICER CERTIFICATION

THE EVALUATED SIGNIFICANCE OF THIS PROPERTY WITHIN THE STATE IS:

NATIONAL STATE LOCAL

As the designated State Historic Preservation Officer for the National Historic Preservation Act of 1966 (Public Law 89-665), I hereby nominate this property for inclusion in the National Register and certify that it has been evaluated according to the criteria and procedures set forth by the National Park Service.

STATE HISTORIC PRESERVATION OFFICER SIGNATURE

TITLE

DATE

FOR NPS USE ONLY

I HEREBY CERTIFY THAT THIS PROPERTY IS INCLUDED IN THE NATIONAL REGISTER

DATE

DIRECTOR, OFFICE OF ARCHEOLOGY AND HISTORIC PRESERVATION

ATTEST:

DATE

KEEPER OF THE NATIONAL REGISTER

8 SIGNIFICANCE

PERIOD	AREAS OF SIGNIFICANCE -- CHECK AND JUSTIFY BELOW			
<input type="checkbox"/> PREHISTORIC	<input type="checkbox"/> ARCHEOLOGY-PREHISTORIC	<input type="checkbox"/> COMMUNITY PLANNING	<input type="checkbox"/> LANDSCAPE ARCHITECTURE	<input checked="" type="checkbox"/> RELIGION
<input type="checkbox"/> 1400-1499	<input type="checkbox"/> ARCHEOLOGY-HISTORIC	<input type="checkbox"/> CONSERVATION	<input type="checkbox"/> LAW	<input type="checkbox"/> SCIENCE
<input type="checkbox"/> 1500-1599	<input type="checkbox"/> AGRICULTURE	<input type="checkbox"/> ECONOMICS	<input type="checkbox"/> LITERATURE	<input type="checkbox"/> SCULPTURE
<input type="checkbox"/> 1600-1699	<input checked="" type="checkbox"/> ARCHITECTURE	<input type="checkbox"/> EDUCATION	<input checked="" type="checkbox"/> MILITARY	<input type="checkbox"/> SOCIAL/HUMANITARIAN
<input type="checkbox"/> 1700-1799	<input type="checkbox"/> ART	<input type="checkbox"/> ENGINEERING	<input checked="" type="checkbox"/> MUSIC	<input type="checkbox"/> THEATER
<input checked="" type="checkbox"/> 1800-1899	<input type="checkbox"/> COMMERCE	<input checked="" type="checkbox"/> EXPLORATION/SETTLEMENT	<input type="checkbox"/> PHILOSOPHY	<input type="checkbox"/> TRANSPORTATION
<input checked="" type="checkbox"/> 1900-	<input type="checkbox"/> COMMUNICATIONS	<input type="checkbox"/> INDUSTRY	<input type="checkbox"/> POLITICS/GOVERNMENT	<input type="checkbox"/> OTHER (SPECIFY)
		<input type="checkbox"/> INVENTION		

SPECIFIC DATES

BUILDER/ARCHITECT

STATEMENT OF SIGNIFICANCE

Bunker Hill is significant for its Civil War history, log buildings and black row. It is a rural village which just never developed though several attempts were made. It is located on U.S. Route 11, the early old wagon road to Winchester, Va. At the crossroads of the old South Branch Road which ran from the Frederick County line to Smithfield (Middleway in Jefferson Co.). A further seemly advantage for development was the fact that it was located on Mill Creek amidst Berkeley County's most heavily populated mill area. Within a mile, for many years, were six mills. Most of the land here belonged to Gen. Elisha Boyd. For some 20 years (1820 to 1841) here General Boyd had his own industrial village-two mills, brick plant, cooper shop and in the 1830s he built a large brick building which was used as store. This architecturally outstanding building is the only one of his buildings which remains today. The east end of the district was developed by Joel Ward who owned the next mill east of Gen. Boyd's mills. In 1831 Joel Ward sold 1/2 acre to William Cleveland and Jacob Myers for \$10.00. Here the first store of the town was built. It was purchased in 1846 by Charles S. North who taught music. The building became known as the North Music School. Joel Ward built a log cabin and house. After his death in the 1850s this, along with other lots, were sold. Gen. Boyd deeded a lot to the Methodists along Runnymede Road to erect a meeting house in 1839. After his death in 1841 the Edgewood house and mill lot went to son, John Boyd, who made an attempt to develop a town. He sold off a few lots. Two outstanding buildings-the Jessie Brillhart store and log house were erected. In 1854 he sold a lot to the Presbyterians to erect a church and a lot for a school which is no longer standing. After the Civil War John Boyd lost Edgewood Manor plantation. On April 1, 1880, Charles J. Faulkner sold 78 acres to Christian F. Laise. This was the part of the Edgewood land which lay on the east side of Route 11. Laise divided part of this land into lots. Laise had given a Deed of Trust on the land to Faulkner; by 1889 both were dead. A suit was brought in Chancery and most of the lots were resold to pay the debt. The 9 most eastern lots had been sold off to the black people. On the two most southern lots there had been established a cemetery and church. Even this was resold at a cost of \$125.00 to the black Mt. Tabor Congregation Trustees. They had originally had purchased the lots for \$125.00 from Christian Laise in 1883. This Black Street or Row is the best representation of the freed colored people in Berkeley County. This street was developed by the freed black man. A log house was built on each lot. Only one of these remains today. The row is still owned by black people and the church is an active church. Bunker Hill basically served a rural community-the area in the southeastern end of Berkeley Co. with 3 stores (the Brillhart store in operation) and 4 churches - Methodist, Presbyterian and Episcopal (the Morgan Chapel is near the western edge of the town) and the black church. It had a white school and a black school which has been turned into a house and is near the northeastern district line. One of the most important historical facts of the village is the part it played in the Civil War. Two of its most historic buildings are the Old Methodist Church and the Presbyterian Church. The Presbyterian Church was almost destroyed during the War with virtually just a shell of a building left. The Old Methodist Church building had many uses during the War. A copy of letter sent to the U. S. Government in 1869 asking for money to repair the Church shows a verification of the great involvement of the Methodist Church building and Bunker Hill in the Civil War.

9 MAJOR BIBLIOGRAPHICAL REFERENCES

UTM NOT VERIFIED

10 GEOGRAPHICAL DATA

ACREAGE OF NOMINATED PROPERTY 14 acres

UTM REFERENCES

A	17	75,416,0	4,35,765,0
	ZONE	EASTING	NORTHING
c	17	75,387,0	4,35,75,1,0

B	17	75,403,0	4,35,747,0
	ZONE	EASTING	NORTHING
D	17	75,379,0	4,35,771,0

VERBAL BOUNDARY DESCRIPTION

Beginning at the main crossroad, thence North along Winchester Pike 150 ft, thence East 400 ft., thence South 150 ft. to the Smithfield road, thence east along it 500 ft., thence South 150 ft, thence West 500 ft., thence south along the back lines of lots 550 ft to the southeast corner of the cemetery, thence West along it 350 ft, thence North 50 ft, thence West about 180 ft to the east side of the Winchester Pike, thence along the east side north 250 feet, thence crossing the Pike and along a lot line west 150 feet, thence north 100 feet, thence west 250 feet to the east side of the railroad, thence along it north 200 feet to the road, thence along it east 400 ft. to the beginning

STATE	CODE	COUNTY	CODE
-------	------	--------	------

STATE	CODE	COUNTY	CODE
-------	------	--------	------

11 FORM PREPARED BY

NAME/TITLE Don C. Wood, Genealogist, Historian, Historic Archeologist

ORGANIZATION President, Berkeley County Historical Society
Chairman, Berkeley County Historical Landmarks Commission

DATE

STREET & NUMBER
Route 3, Box 79

TELEPHONE

CITY OR TOWN
Martinsburg, WV 25401

STATE

12 STATE HISTORIC PRESERVATION OFFICER CERTIFICATION

THE EVALUATED SIGNIFICANCE OF THIS PROPERTY WITHIN THE STATE IS:

NATIONAL

STATE

LOCAL

As the designated State Historic Preservation Officer for the National Historic Preservation Act of 1966 (Public Law 89-665), I hereby nominate this property for inclusion in the National Register and certify that it has been evaluated according to the criteria and procedures set forth by the National Park Service.

STATE HISTORIC PRESERVATION OFFICER SIGNATURE

TITLE

DATE

FOR NPS USE ONLY

I HEREBY CERTIFY THAT THIS PROPERTY IS INCLUDED IN THE NATIONAL REGISTER

DATE

DIRECTOR, OFFICE OF ARCHEOLOGY AND HISTORIC PRESERVATION
ATTEST:

DATE

KEEPER OF THE NATIONAL REGISTER

UNITED STATES DEPARTMENT OF THE INTERIOR
NATIONAL PARK SERVICE

FOR NPS USE ONLY

RECEIVED

NOV 01 1979

DATE ENTERED

NATIONAL REGISTER OF HISTORIC PLACES
INVENTORY -- NOMINATION FORM

Bunker Hill Historical District

CONTINUATION SHEET

ITEM NUMBER 4 PAGE 2

- | | |
|---|-----------------------|
| 1. M. C. Hardy | Bunker Hill, WV 25413 |
| 2. Virginia Gold | " |
| 3. Paul B. Aiky, Sr. | " |
| 4. Robert E. Chandler, Jr. | " |
| 5. | " |
| 6-7. Goode W. Gess | " |
| 8. Jane Gold Dean | " |
| 9. Jane Henson Dean | " |
| 10-11. Edward A. Bain | " |
| 12. James H. Newcomb | " |
| 13. Ronald R. Cook | " |
| 14. Margaret L. Yonker | " |
| 15. Evelyn Henshaw | " |
| 16. Bunker Hill m. E. Church | " |
| 17. " | " |
| 24. Bessie Cage | " |
| 23. Harry & Georgia Green | " |
| 22. John H. Walker | " |
| 21. FLOYD PARKER HEIRS | " |
| 20. Henderson and Branson | " |
| T W. B. Branson | " |
| 29. Presbyterian Church | " |
| 28. Tr. Bunker Hill Presbyterian Church | " |
| 30. Bunker Hill Presbyterian Church | " |
| 31. Cedric A. Sullivan | " |
| 32. Methodist Church | " |
| 19. Trustees of Antebellum Baptist Church | " |

BUNKER HILL GRIST MILL

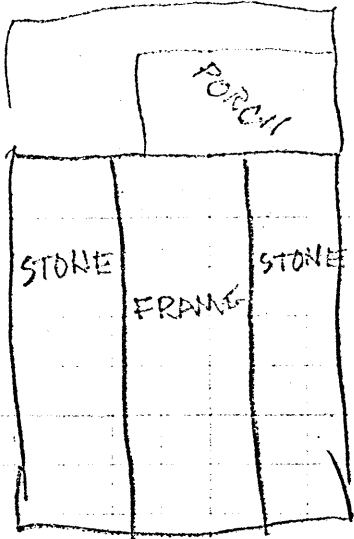
MRS. PAUL K. GILES

MACHINE
SAID
COIN

MILL
POND

COVERED MILL RACE

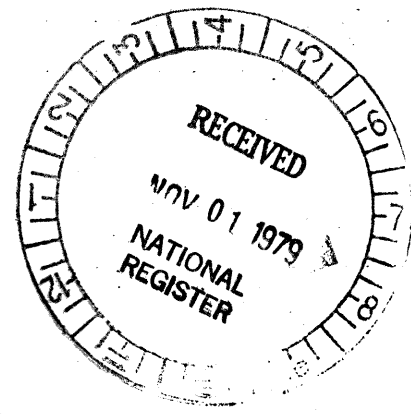
10'



OPERATED
UNTIL 1964

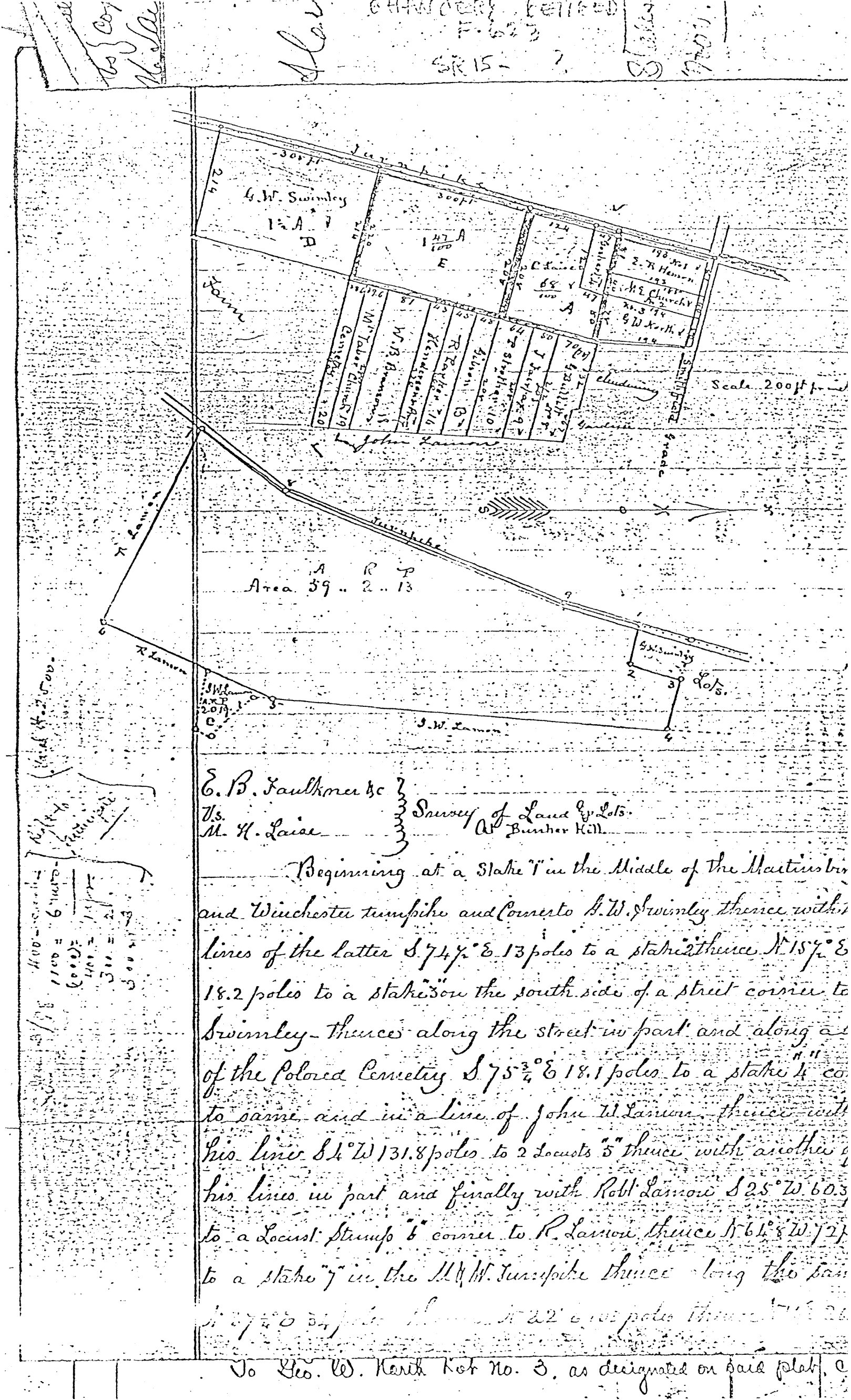
ORIGINALLY
1785
BURNED 1875 - REBUILT
THAT IS WHY
S. END IS FRAM
& CIRCULAR
SAW MARKS
ON TIMBERS
INSIDE

7.0
56.2
.8 MILE



HISTORIC INVENTORY
OF STRUCTURES IN
BERKELEY COUNTY, W. VA.
1973-1974

F. SILVER, S.B.C.
11 DEC 1973



all
No. 107
No. 110

CHANDLER & BELLEVILLE
F. 623
S. R. 15 - 7
1701

1/201 1/201
2.001 9.001
3.001 1.001
5.001 2.001
500 1.001
500 1.001

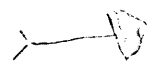
E. B. Faulkner &c
Vs.
M. H. Laize

Survey of Land by Lots.
at Bunker Hill.

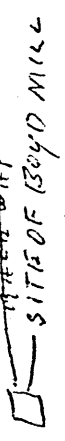
Beginning at a Stake "1" in the Middle of the Martinsbur
and Winchester turnpike and Correso G. W. Swimley thence with
lines of the latter S 74 1/2 E 13 poles to a stake thence N 15 1/2 E
18.2 poles to a stake on the south side of a street corner to
Swimley - thence along the street in part and along a
of the Polored Cemetery S 75 3/4 E 18.1 poles to a stake "4"
to same and in a line of John W. Lamson thence with
his line S 1/4 W 131.8 poles to 2 Locusts "5" thence with another
his line in part and finally with Robt. Lamour S 25 W 60.3
to a Locust Stump "6" corner to R. Lamour thence N 6 1/8 W 7 1/2
to a stake "7" in the M. & W. Turnpike thence along the same
S 7 1/2 E 34 poles thence N 22 E 102 poles thence N 12 E 26

To Geo. W. North Lot No. 3, as designated on said plat, &c

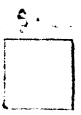
E.



MORGAN PARK
NICK STREET
SITE OF BOYD MILL

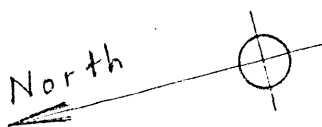


BOYD STORE
18318
SPRINK

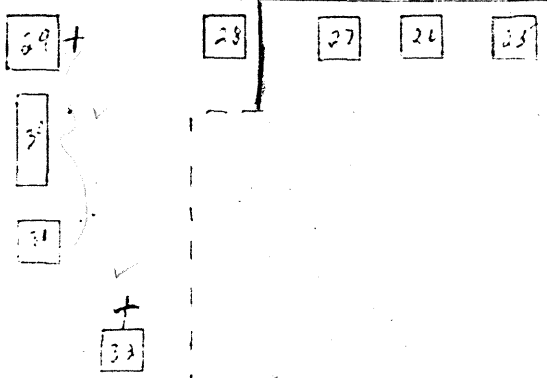
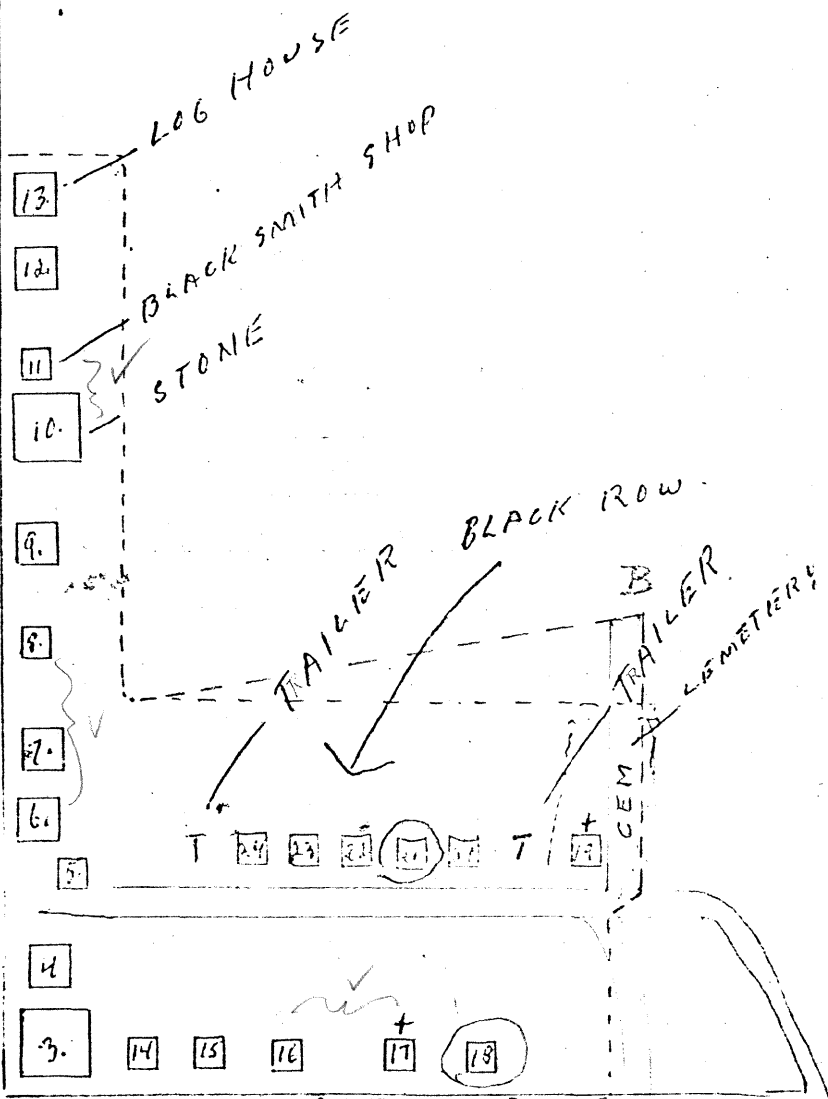


U.S. 11

Scale about 1:2400



A



C

D

BUNKER HILL HISTORICAL DISTRICT
PREPARED APRIL 30 1978 BY DEN WOOD
VISIT TO AREA BY RADMEN COLLINS
APRIL 23, 1978



Boomtown Historic District
Intrusions

See color coded map.

Intrusions have been identified as those buildings which do not conform to the architecture of the district. Buildings built in the last 40 years which carry out architectural style and add to the rhythm of the area.

Several sections of the district are basically unspoiled. The largest intrusion is located on the west side of the 500 and 600 blocks of Winchester Avenue. A shopping center was established about 1960. In more recent years the bakery company has destroyed several buildings between the shopping center and the bakery and is now using the area for parking.

The northeast corner of Wilson and Winchester Ave. is occupied by a modern gas station. A Dairy Queen is in the 800 block and a 7-11 Store is in the 900 block.

In the 600 block of West Stephen St. is 4 onestory cinder block buildings (with posts) and brick facing.

The 400 block of Winchester Ave., west side, has 2 fair size commercial buildings which do not conform. The building on the corner of John St. was an older building which has become modernized to the point of losing all identity.

At the corner of King and Winchester Ave. is another modern gas station building.

Corner of King and Charles Sts. is an old building which suffered a major fire several years ago and has had several additions, etc.

Please note that street numbers in Martinsburg do not conform to blocks but just happen any old way.