

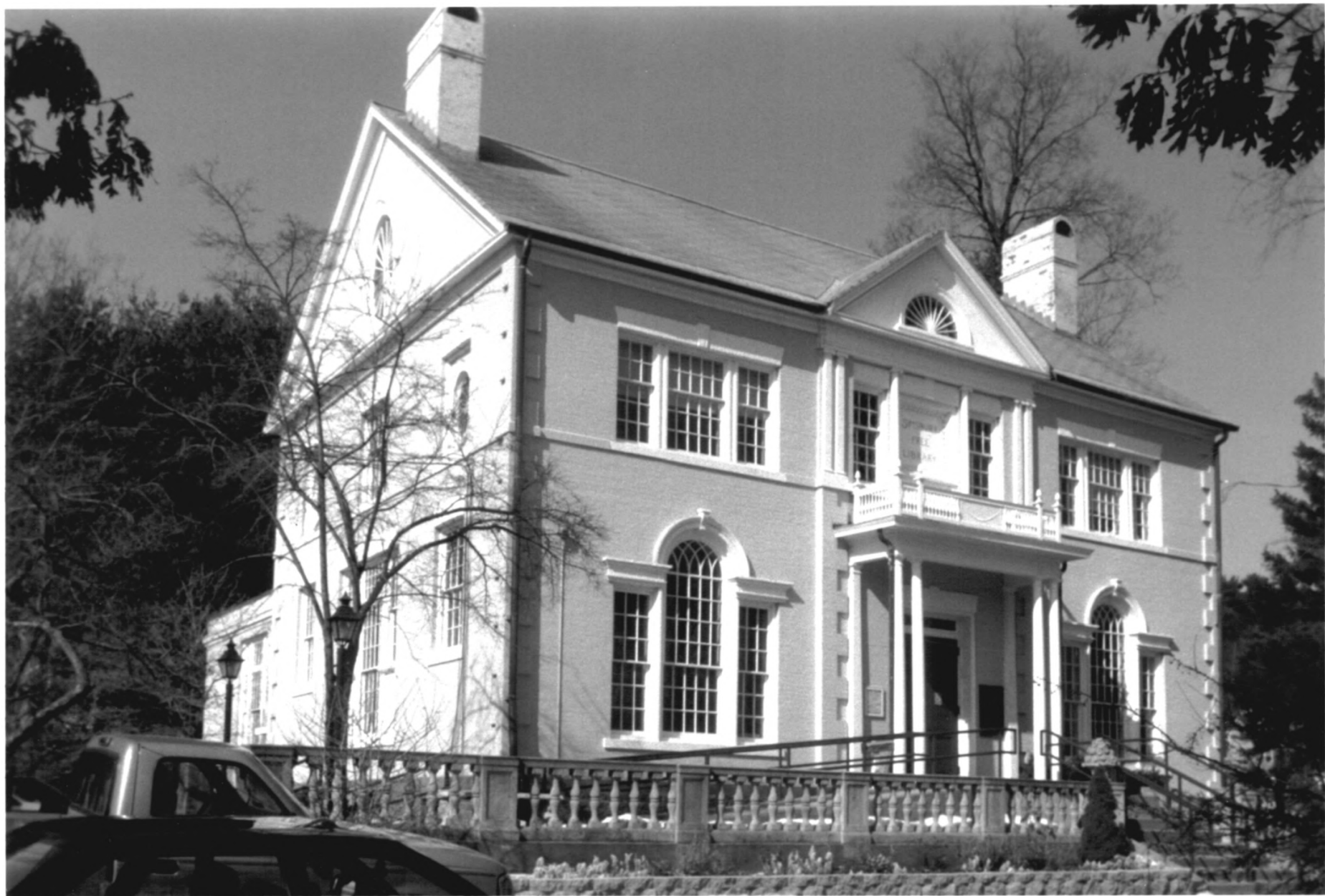


SIMSBURY CTR HD 1

"

HARTFORD CY  
CT

Photo 1



SAMS BURY CTR H D 2

..

HARTFORD CT

Photo 2



3

SIMSBURY CTR HD

U

HARTFORD CT

CT

Photo 3





4

SIMSBURY CTR # D

"

HARTFORD CT

CT

Photo 4





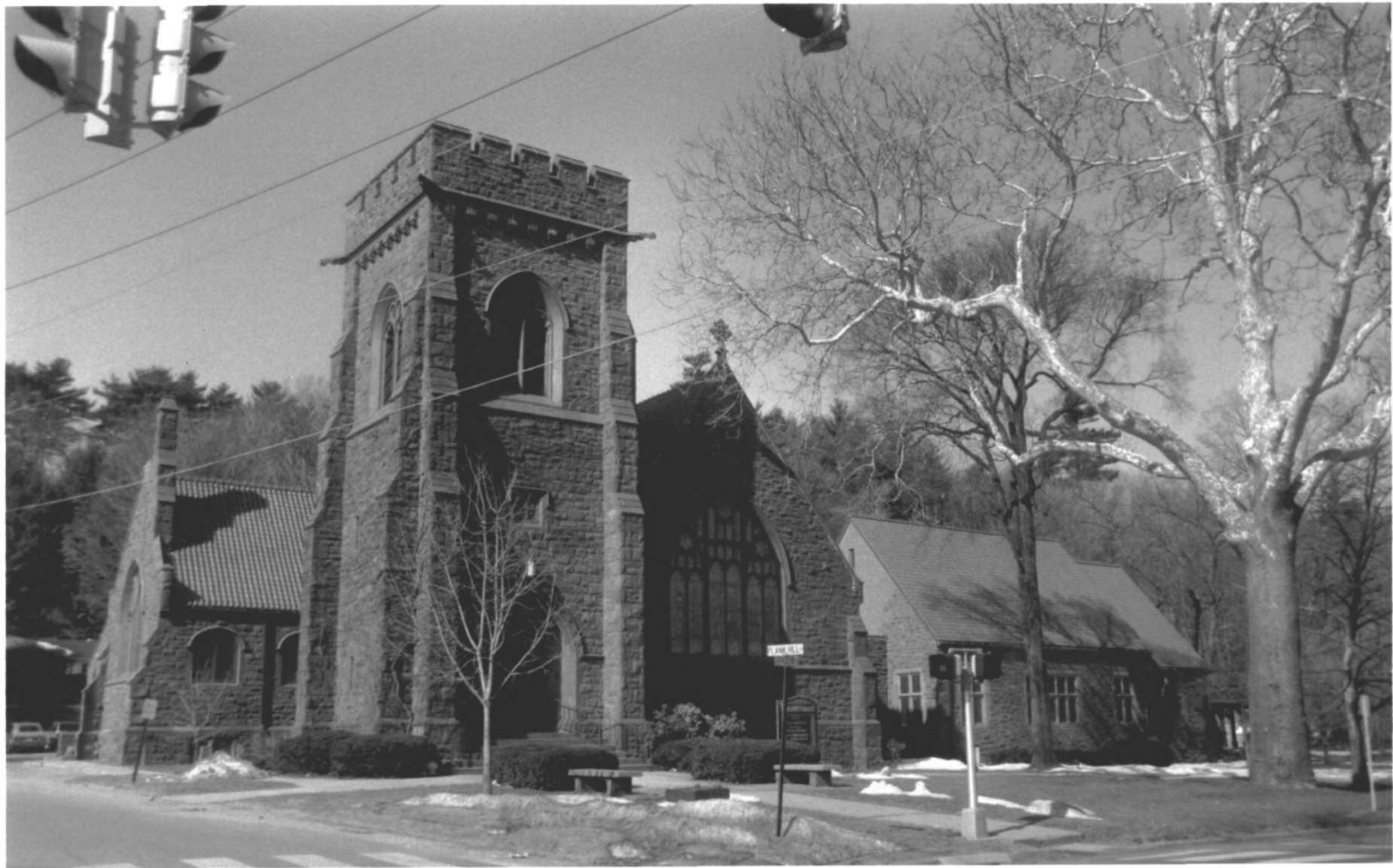
5

SIMSBURY CTR HD

"  
HARTFORD CY

CT

Photo 5



SIMSBURY CT R H D 6

"

HARTFORD Cy

CT

Photo 6



7

SIMS BURY CENTER HD

↑

HARTFORD CT

CT

Photo 7





8

SIMSBURY CENTER H. D.

"

HARTFORD CT

CT

Photo 8



9

SIMSBURY CTR HD

"

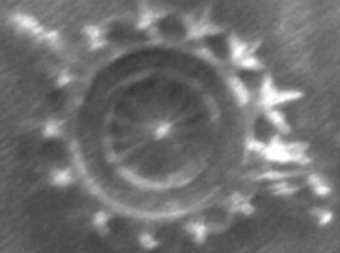
HARTFORD  
CT

Photo 9



ENTRANCE TO PENT ROAD  
1668 - 1787

THIS ROAD LEADING TO THE  
RIVER CROSSING WAS A DIRECT  
ROUTE TO WINDSOR  
IT WAS USED BY THE MILITIA  
ON THEIR WAY TO BOSTON  
IN MAY 1775



PLACED BY  
ABIGAIL PHELPS CHAPTER D.A.R.  
1935

10

SIMSBURY CTR H. D.

"

HARTFORD CT

CT

Photo 10





11

SIMSBURY CTR H D

"

HARTFORD CY

CT

Photo 11