



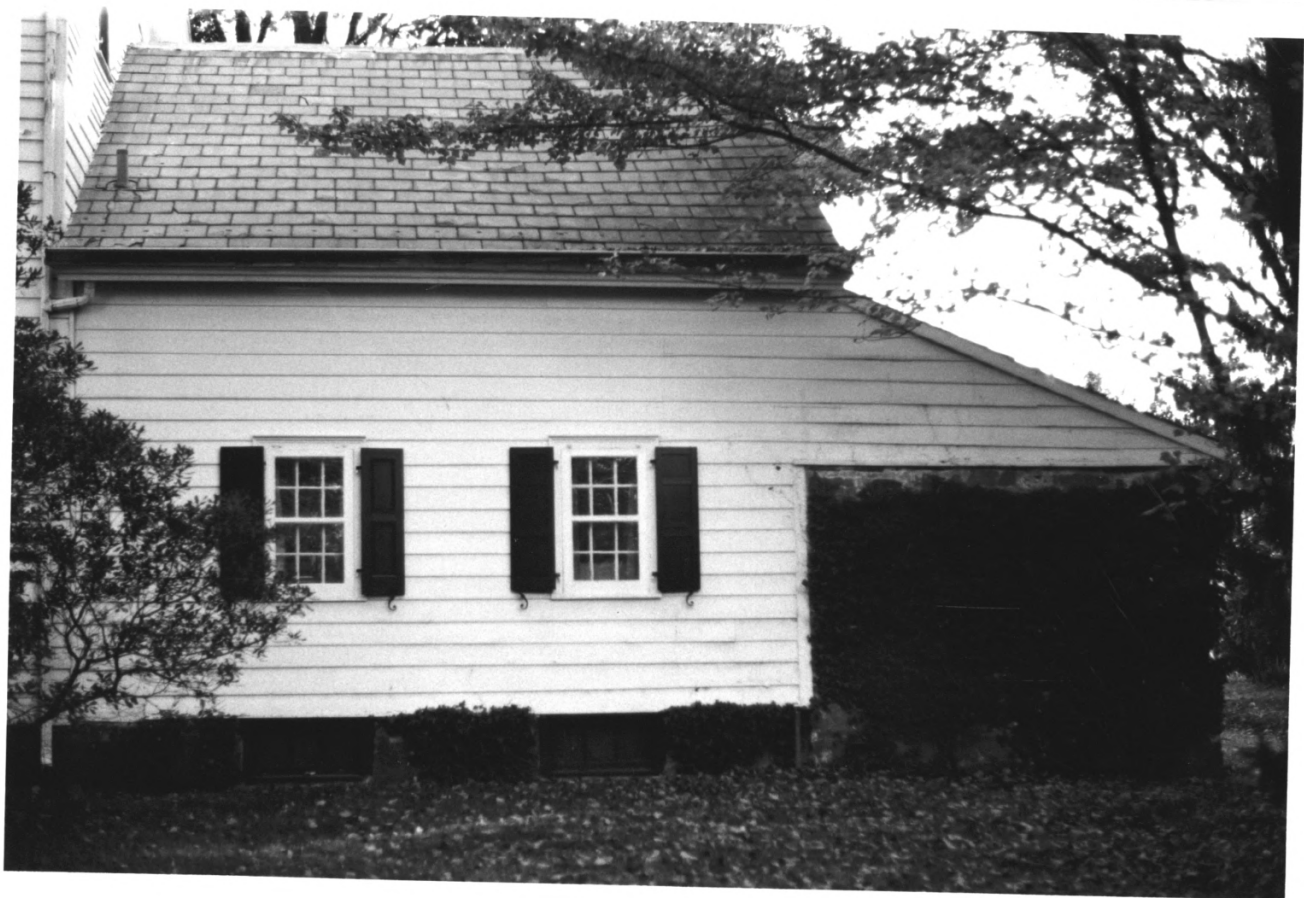
Southwest corner of Gulick House. Segments, beginning in foreground, are west segment masonry "Cold Room" added soon after first construction; west center segment (oldest part of house, ca. 1740-50); east center segment (a "bridge" built ca. 1800 to connect two parts of house); and east segment (built as free standing side-hall house, before ca. 1770).

Gulick House 1978  
South Brunswick southwest  
Middlesex County corner of  
New Jersey 034 house

JUL 3 1979 MAY 1 1979

145

NEG AT:  
HISTORIC SITES RESEARCH  
86 SNOWDEN LANE  
PRINCETON NJ



North face of west center and west segments of Gulick House, looking south. The one and one-half story west center segment is the oldest part, built ca. 1740-50, and contains the main kitchen on the ground floor. The stone (ivy covered) "Cold Room" west segment was added to it after one or two years of weathering.

Gulick House 1978  
South Brunswick north side  
Middlesex County of house  
New Jersey 034

JUL 3 1979 MAY 1 1979

295

NEG AT:

HISTORIC SITES RESEARCH  
86 SNOWDEN LANE  
PRINCETON NJ



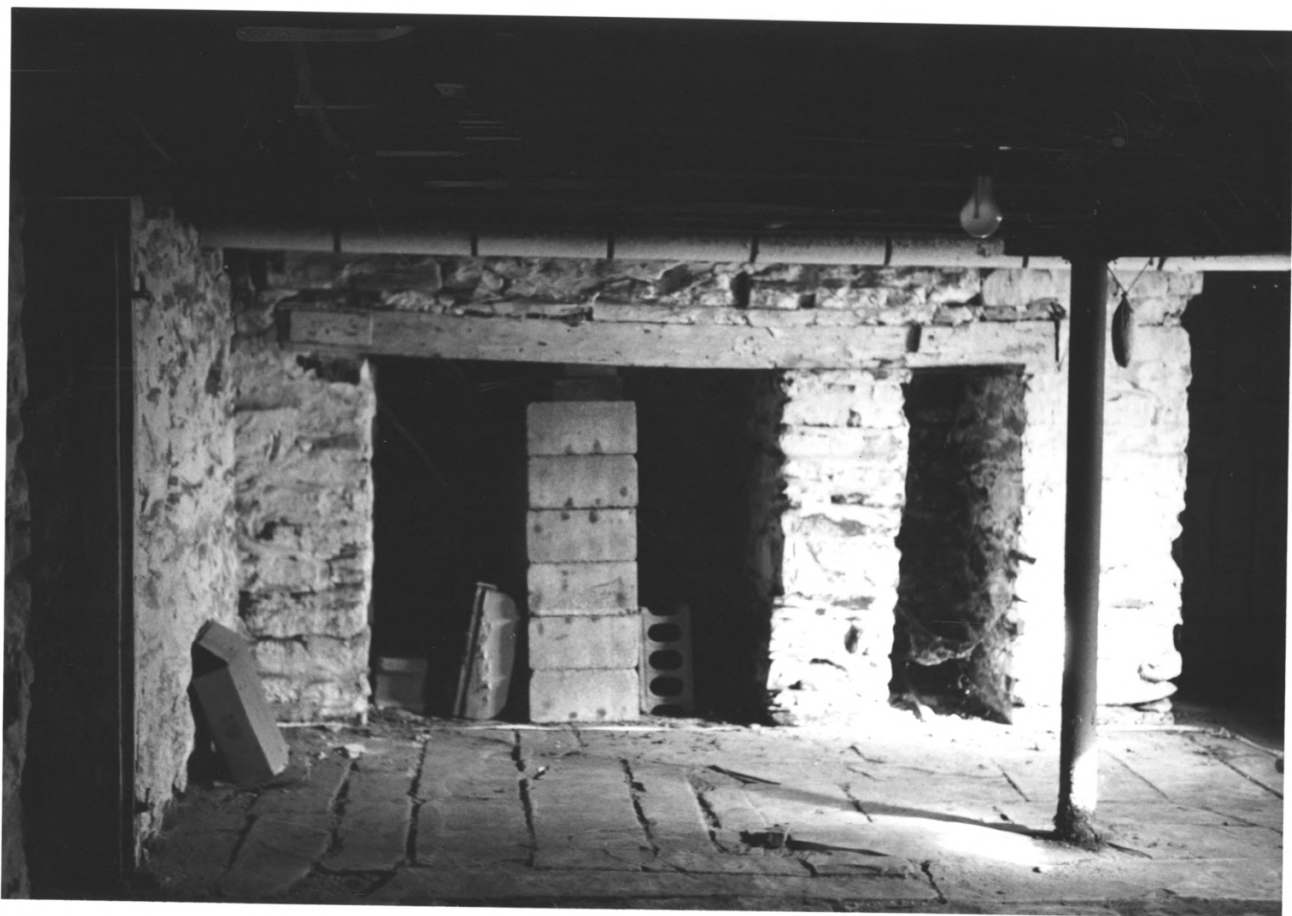
Southeast corner of Gulick House. This was built sometime after the first unit, but well before 1800, and probably before ca. 1770. This shows east end wall of this east segment, with brick chimney back behind the main fire place. Windows are 9/6 double hung on first floor, and 6/6 on second.

Gulick House 1978  
South Brunswick southeast  
Middlesex County corner of  
New Jersey 034 house

JUL 3 1979 MAY 1 1979

NEG AT:  
HISTORIC SITES RESEARCH  
86 SNOWDEN LANE  
PRINCETON NJ 08540

395



Working-kitchen fire place at east end of eastern segment of Gulick House, in stone-paved cellar room, looking east. There is a similar fire place at the other end of the cellar under the west end of the west-center segment.

Gulick House 1978  
South Brunswick view of  
Middlesex County basement  
New Jersey 034 fireplace

JUL 3 <sup>vd</sup> 1979 MAY 1 1979

40/5

NEG AT:

HISTORIC SITES RESEARCH  
86 SNOWDEN LANE  
PRINCETON NJ 08540

RECEIVED  
MAY 1 1979  
NATIONAL REGISTER



West end of Gulick Barn, looking east. The main doors are on the barely visible south wall. This mortised and tenoned brace-framed structure dates from ca. 1850, but incorporates parts of an older barn with hewn beams. This barn, 30 ft. by 40 ft., is about 90 ft. south of the Gulick House.

Gulick House 1978  
South Brunswick west end of  
Middlesex County barn  
New Jersey 034

JUL 3 1979 MAY 1 1979

5075

NEG AT:  
HISTORIC SITES RESEARCH  
86 SNOWDEN LANE  
PRINCETON NJ