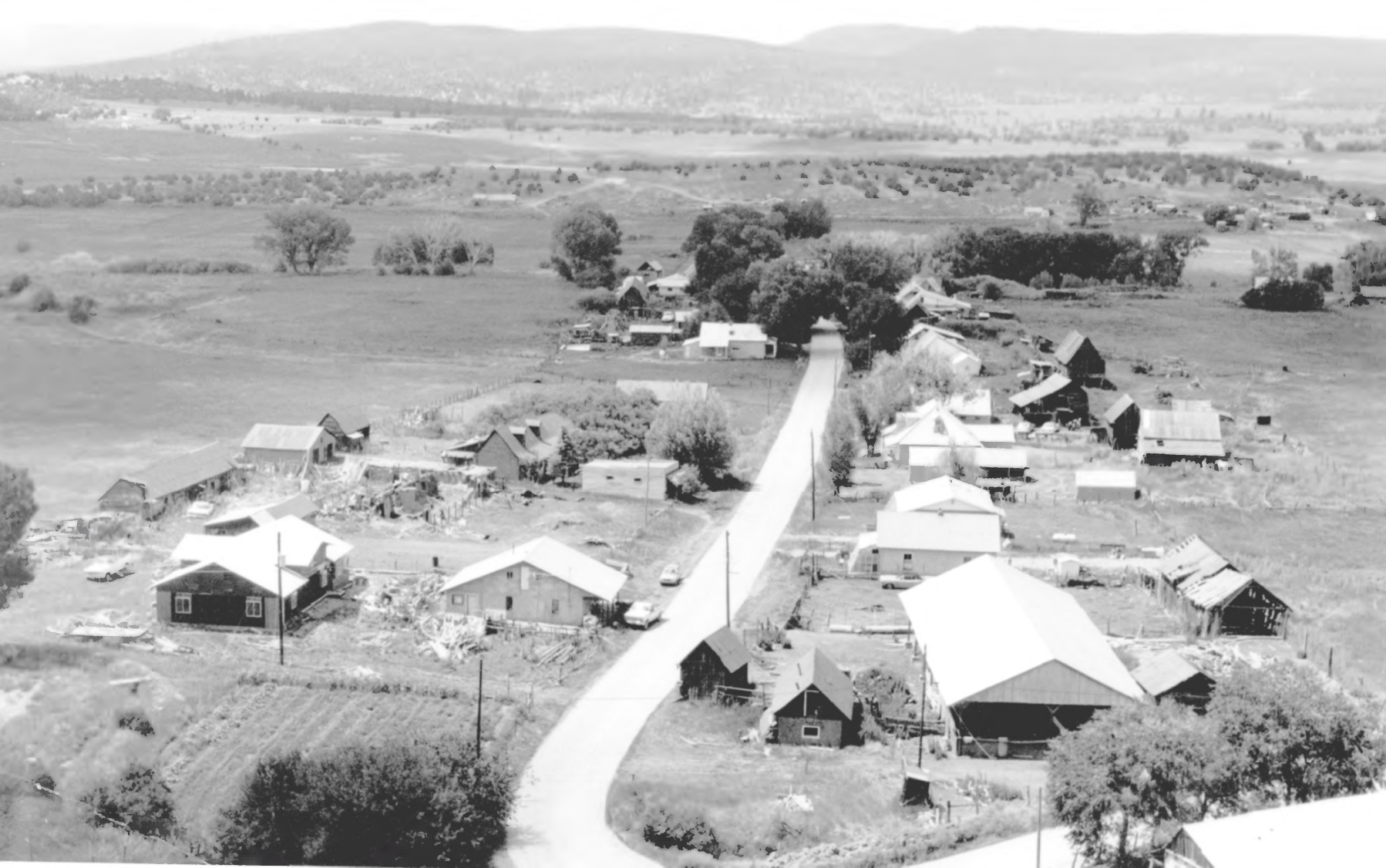




8. La Puente Hist. District;
Hist. Resources of La Tierra
Amarilla, NM; C. Wilson; 1984;
NMSHPD; looking southwest.



9. La Puente Hist. District;
Hist. Resources of La Tierra
Amarilla, NM; C. Wilson; 1984;
NMSHPD; looking northwest.



10. Main Road; La Puente Hist.
District; Hist. Resources of La
Tierra Amarilla, NM; C. Wilson;
1984; NMSHPD; looking northwest.



12. Ulibarri Shed; La Puente
Hist. District; Hist. Resources
of La Tierra Amarilla, NM; C.
Wilson; 1984; NMSHPD; looking
south; significant.



14. Salazar Barn; La Puente
Hist. District; Hist. Resources
of La Tierra Amarilla, NM; C.
Wilson; 1984; NMSHDP; Looking
west; significant.



15. Barn, #86; La Puente Hist. District; Hist. Resources of La Tierra Amarilla, NM; C. Wilson; 1984; NMSHDP; looking southwest; significant.



16. Notching detail; La Puente
Hist. District; Hist. Resources
of La Tierra Amarilla, NM; C.
Wilson; 1984; NMSHDP; looking
northwest.



23. Ulibarri House; La Puente
Hist. District; Hist. Resources
of La Tierra Amarilla, NM; C.
Wilson; 1984; NMSHPD; looking
southwest; significant.



40. Carlos Manzanares House;
La Puente Hist. District; Hist.
Resources of La Tierra Amarilla,
NM; C. Wilson; 1984; NMSHDPD;
Looking northwest; significant.



44. Frank Manzanares House; La Puente Hist. District; Hist. Resources of La Tierra Amarilla, NM; C. Wilson; 1984; NMSHDP; Looking west; contributing.



48. Ruben Manzanares House;
La Puente Hist. District; Hist.
Resources of La Tierra Amarilla,
NM; C. Wilson; 1984; NMSHPD;
looking northwest; significant.



50. San Miguel Church; La Puente
Hist. District; Hist. Resources of
La Tierra Amarilla, NM; C. Wilson;
1984; NMSHPD; looking west;
significant.