



Maternity Hospital (Ripley Memorial
Hospital and Emily Paddock Cottage)
300 Queen Avenue North, Minneapolis, MN
Susan Roth -- 1979 *Hennepin Co.*

Minnesota Historical Society, 690
Cedar Street, St. Paul, MN 55101

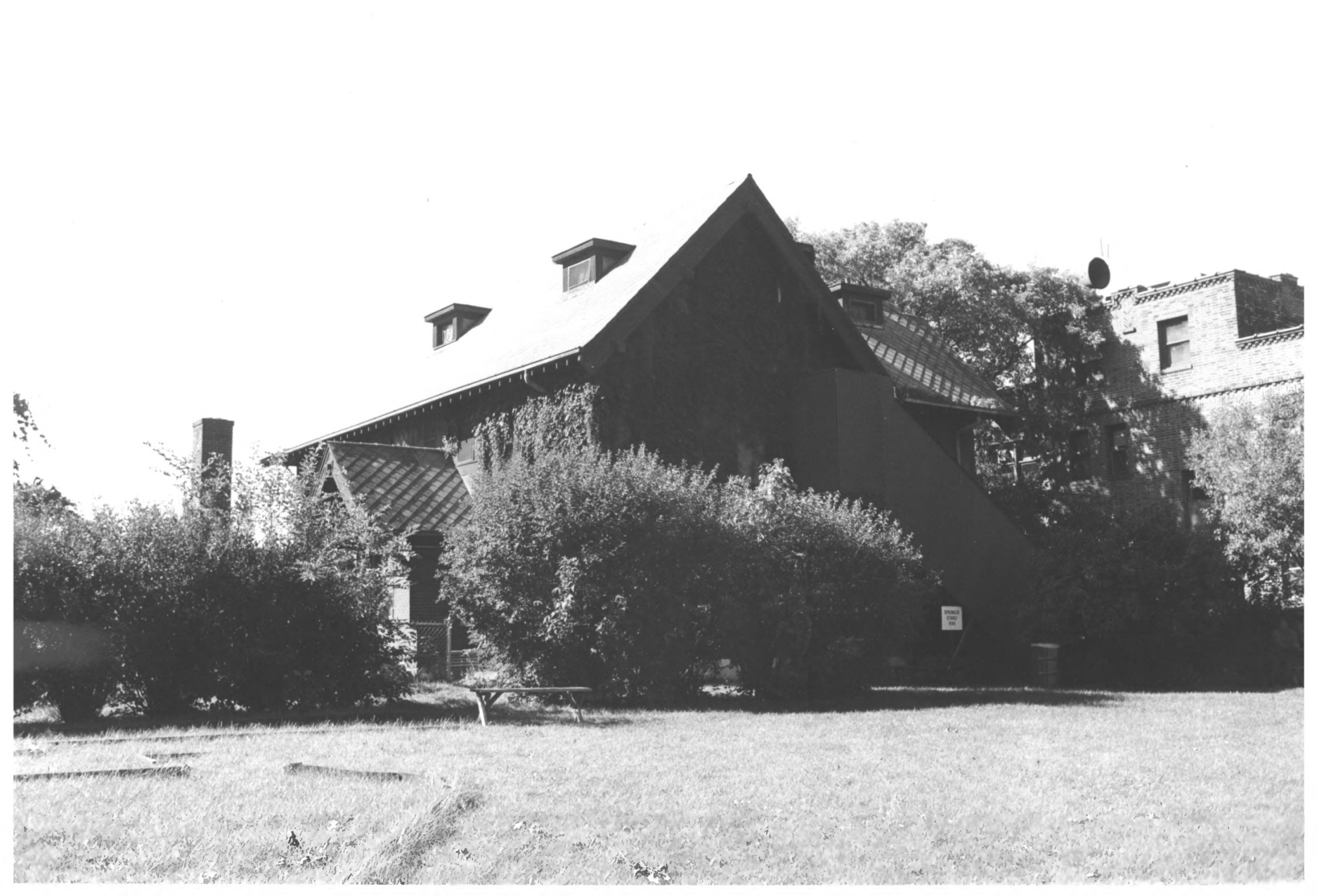
Northeast perspective

02368/12

1074

MAR 27 1980

JAN 29 1980



Maternity Hospital (Emily Paddock
Cottage) *Hennepin Co.*

300 Queen Avenue North,
Minneapolis, MN

MAR 27 1980

Susan Roth -- 1979

Minnesota Historical Society, 690

Cedar Street, St. Paul, MN 55101

Northeast perspective

03240/17

2074

JAN 29 1980



Maternity Hospital (Babies' Bungalow)

300 Queen Avenue North

Minneapolis, MN *Minneapolis* MAR 27 1980

Susan Roth -- 1979 *CO.*

Minnesota Historical Society, 690

Cedar Street, St. Paul, MN 55101

Southeast perspective

03268/20

3 of 4

JAN 29 1980



Maternity Hospital (Ripley Memorial
Hospital)

Minneapolis, MN

300 Queen Avenue North, Minneapolis, MN
Susan Roth -- 1979

MAR 27 1980

Minnesota Historical Society, 690

Cedar Street, St. Paul, MN 55101

North front of west building

03268/14

4064

JAN 29 1980