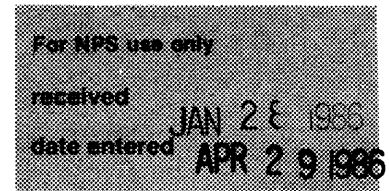


**United States Department of the Interior
National Park Service**

**National Register of Historic Places
Inventory—Nomination Form**



Continuation sheet Thibodaux Multiple Resource Area Item number 7 & 8 Page
 Lafourche Parish

PELTIER HOUSE (Building #1) UTM: 15/710840/3298020

403 Canal Boulevard

Owners: Dr. and Mrs. Neil J. Maki
403 Canal Blvd.
Thibodaux, LA 70301

Builder: Sidney Peltier

Contractor: Joseph A. Robichaux

1910-14

Local Significance - Architecture

The Peltier House is a one-and-a-half story frame Colonial Revival residence with a central hall plan. The house is four rooms deep with two polygonal bays. The interior features pocket doors, deep cove cornices, and four fireplaces with columnar mantels. The present dado in the dining room is a recent addition. The front gallery features grouped Ionic columns on heavy brick bases and a central projecting entrance under a segmental pediment. The hip roof has four large squat hip dormers which are ornamented with pilasters.

In addition to the dado, the central hall has been partitioned at the rear, a staircase has been added, the attic has been finished, and a small portion of the front gallery has been sensitively enclosed. Because the house is significant for its frontal appearance, only the gallery enclosure is a factor in terms of loss of integrity. Fortunately the enclosure is set well behind the columns and is barely noticeable.

To the rear of the house is a roughly contemporaneous garage with beaded board throughout the interior. The old garage doors have been glazed in and the windows replaced. Nonetheless, because of its age and general appearance, it is listed as a contributing element. There is also a modern garage to the rear, which, of course, is listed as a non-contributing element.

Significance:

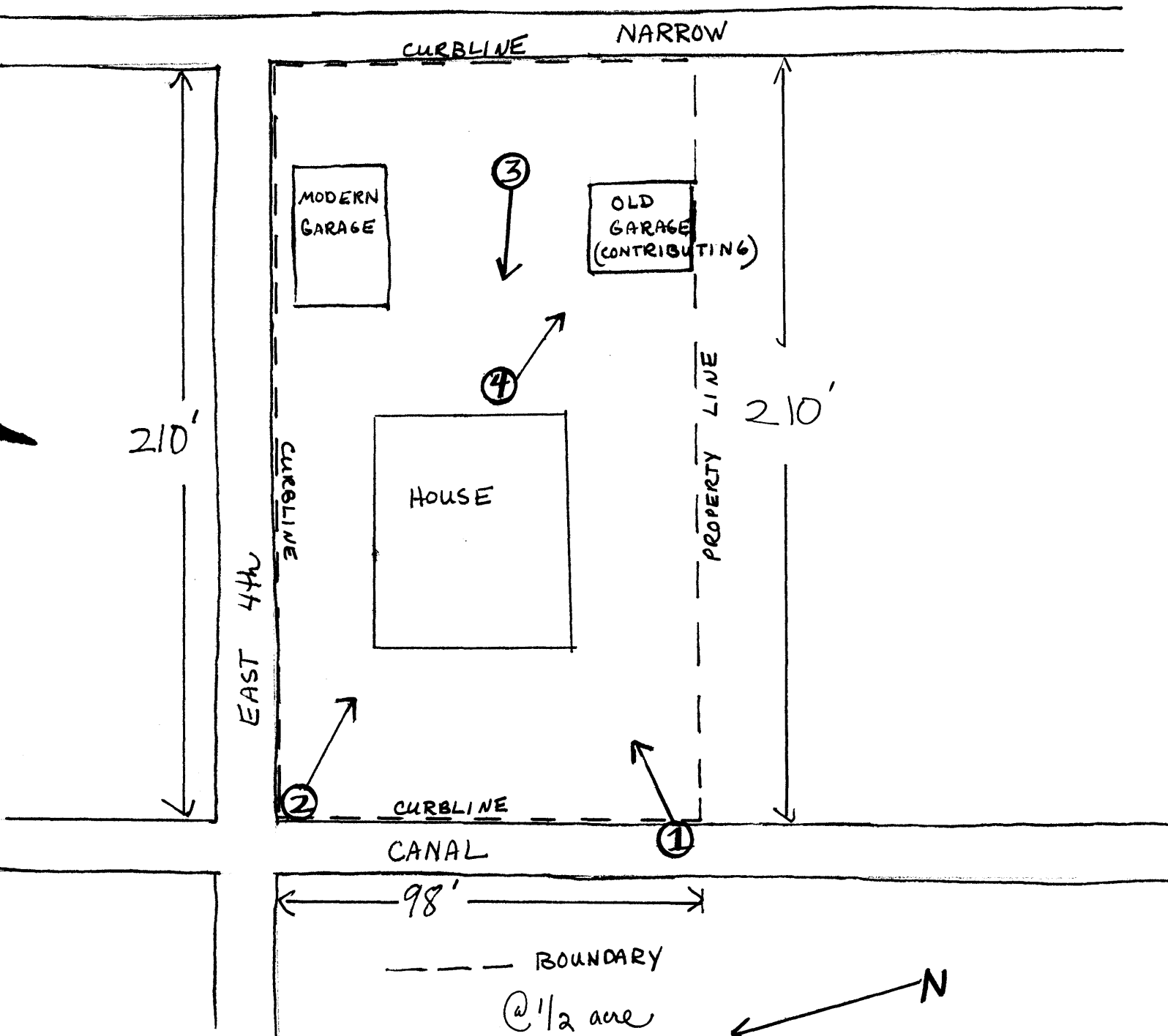
Thibodaux's post-Queen Anne Revival historic residential architecture is characterized almost exclusively by the bungalow style. Bungalows occur in large numbers, but virtually all are low-key run-of-the-mill examples. There are no elaborate Craftsman or impressive twentieth century eclectic houses, for example. There is only one other noteworthy 50+ year old Colonial Revival house in Thibodaux, and it was excluded because its Colonial Revival porch may or may not be original. Against this background, the Peltier House, with its impressive Colonial Revival facade, clearly emerges as a landmark from the period.

Peltier House

Thibodaux MRA

LaFourche Parish, LA

← 98' →



← N

NOT TO SCALE