



NATIONAL REGISTER OF HISTORIC PLACES
PROPERTY PHOTOGRAPH FORM

(Type all entries - attach to or enclose with photograph)

STATE Kansas	
COUNTY Shawnee	
FOR NPS USE ONLY	
ENTRY NUMBER 91.2.30.0014	DATE 3/24/71

SEE INSTRUCTIONS

1. NAME

COMMON: St. Joseph's Catholic Church
AND/OR HISTORIC:

2. LOCATION

STREET AND NUMBER:
235 Van Buren St.

CITY OR TOWN:
Topeka

STATE: <u>Kansas</u>	CODE <u>66603</u>	COUNTY: <u>Shawnee</u>	CODE <u>177</u>
-------------------------	----------------------	---------------------------	--------------------

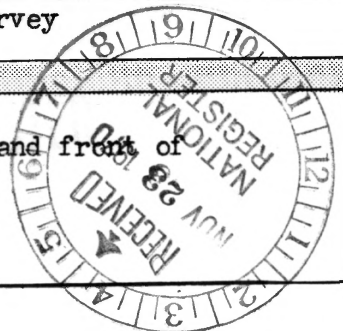
3. PHOTO REFERENCE

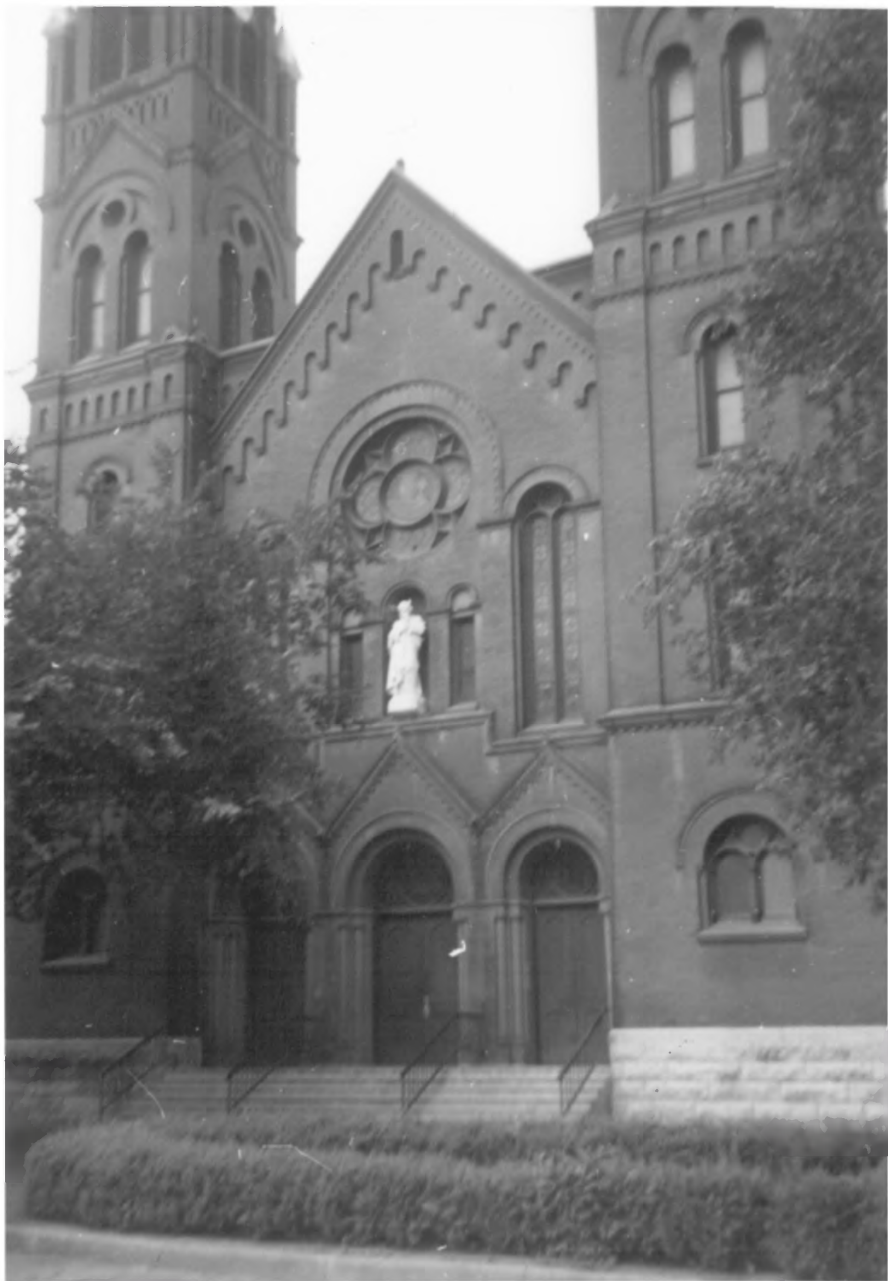
PHOTO CREDIT: Kansas State Historical Society Staff
DATE OF PHOTO: 1969
NEGATIVE FILED AT: Shawnee County File, Historic Sites Survey
Kansas State Historical Society

4. IDENTIFICATION

DESCRIBE VIEW, DIRECTION, ETC.

View from the east showing the two towers and front of
St. Joseph's Church





NATIONAL REGISTER OF HISTORIC PLACES

PROPERTY PHOTOGRAPH FORM

(Type all entries - attach to or enclose with photograph)

STATE

Kansas

COUNTY

Shawnee

FOR NPS USE ONLY

ENTRY NUMBER

DATE

71.2.20.0014 2/24/71

1. NAME

COMMON: St. Joseph's Catholic Church

AND/OR HISTORIC:

2. LOCATION

STREET AND NUMBER:

235 Van Buren St.

CITY OR TOWN:

Topeka

STATE:

Kansas 66603

CODE

COUNTY:

20

Shawnee

CODE

177

3. PHOTO REFERENCE

PHOTO CREDIT: Kansas State Historical Society Staff

DATE OF PHOTO: 1969

NEGATIVE FILED AT: Shawnee County File, Historic Sites Survey
Kansas State Historical Society

4. IDENTIFICATION

DESCRIBE VIEW, DIRECTION, ETC.

View of the front and entrance of St. Joseph's Church from
the east



SEE INSTRUCTIONS