



84-A-424

Dorset Village Historic District

Dorset, Vermont

Credit: Hugh H. Henry

Date: May 1984

Negative Filed at Vermont Division
for Historic Preservation

Description: Church Street street-
scape, buildings #18-8; View look-
ing NE

Photograph 1



84-A-166

Dorset Village Historic District
Dorset, Vermont
Credit: Hugh H. Henry
Date: April 1984
Negative Filed at Vermont Division
for Historic Preservation
Description: Main Street street-
scape, buildings #28-34; View
looking SE
Photograph 2



84-A-167

Dorset Village Historic District

Dorset, Vermont

Credit: Hugh H. Henry

Date: May 1984

Negative Filed at Vermont Division
for Historic Preservation

Description: Main Street street-
scape, buildings #49-42; View look-
ing NW

Photograph 3



84A-167

Dorset Village Historic District
Dorset, Vermont
Credit: Hugh H. Henry
Date: May 1984
Negative Filed at Vermont Division
for Historic Preservation
Description: Sykes Memorial Build-
ing (#1) - S, E elevations; View
looking W
Photograph 4



84-A-106

Dorset Village Historic District
Dorset, Vermont

Credit: Hugh H. Henry

Date: April 1984

Negative Filed at Vermont Division
for Historic Preservation

Description: Factory Point National
Bank (#2) - E, N elevations; View
looking S

Photograph 5



84-A-166

Dorset Village Historic District
Dorset, Vermont
Credit: Hugh H. Henry
Date: April 1984
Negative Filed at Vermont Division
for Historic Preservation
Description: Peltier's Market (#3)
N, W elevations; View looking SE
Photograph 6



84-A-424

Dorset Village Historic District
Dorset, Vermont

Credit: Hugh H. Henry

Date: May 1984

Negative Filed at Vermont Division
for Historic Preservation

Description: Berniss Sheldon House
(#5) - N, W elevations; View look-
ing SE

Photograph 7



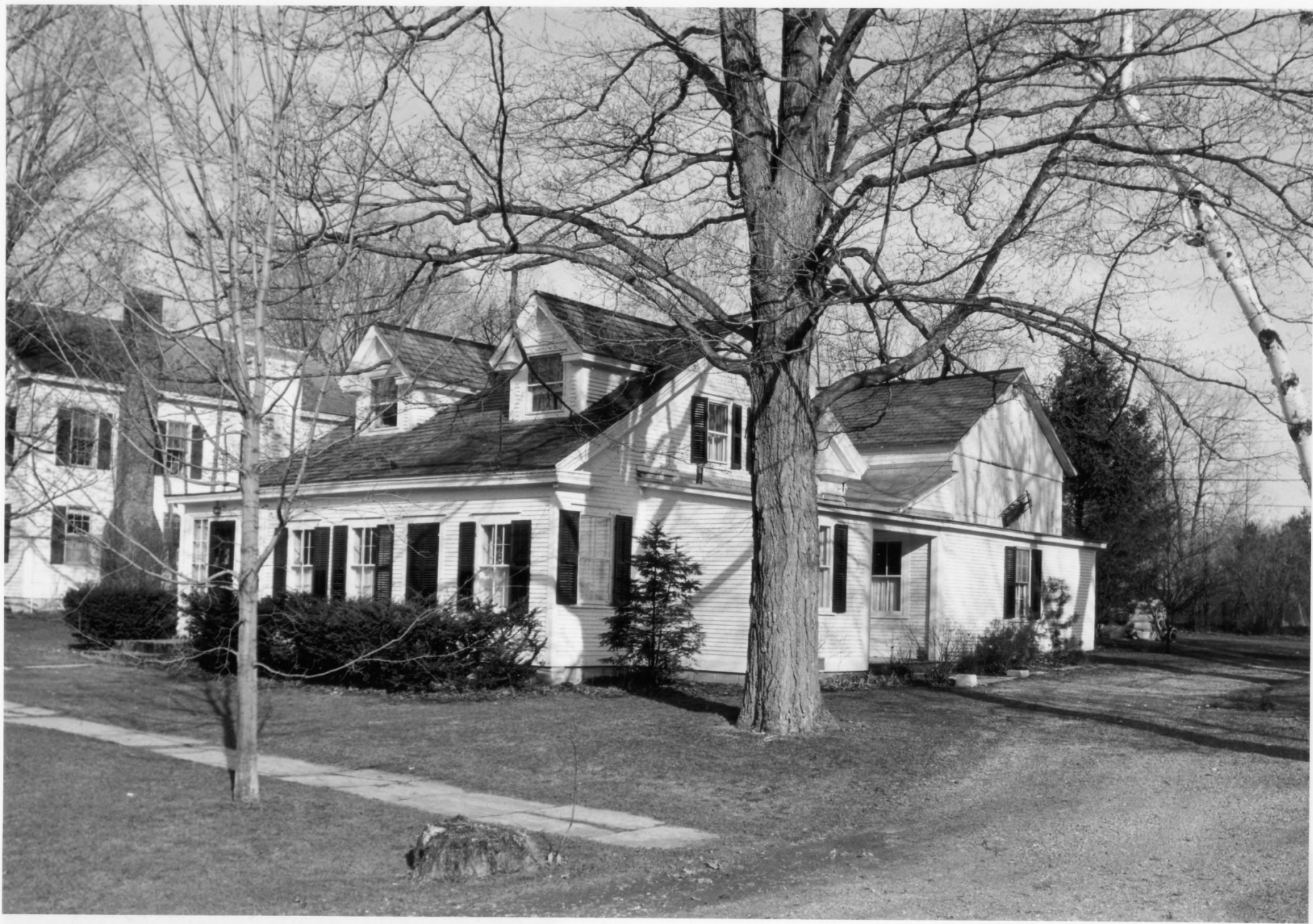
84-A-166

Dorset Village Historic District
Dorset, Vermont
Credit: Hugh H. Henry
Date: April 1984
Negative Filed at Vermont Division
for Historic Preservation
Description: John Sheldon House
(#6) - N, W. elevations; View
looking SE
Photograph 8



84-A-166

Dorset Village Historic District
Dorset, Vermont
Credit: Hugh H. Henry
Date: April 1984
Negative Filed at Vermont Division
for Historic Preservation
Description: Gilbert Sykes House
(#7) - N, W elevations; View look-
ing SE
Photograph 9



84-A-166

Dorset Village Historic District
Dorset, Vermont
Credit: Hugh H. Henry
Date: April 1984
Negative Filed at Vermont Division
for Historic Preservation
Description: Dr. F C. Liddle House
(#8) - N, W elevations; View look-
ing SE
Photograph 10



84-A-166

Dorset Village Historic District
Dorset, Vermont

Credit: Hugh H. Henry

Date: April 1984

Negative Filed at Vermont Division
for Historic Preservation

Description: Dorset Congregational
Church (#9) - N, W elevations;

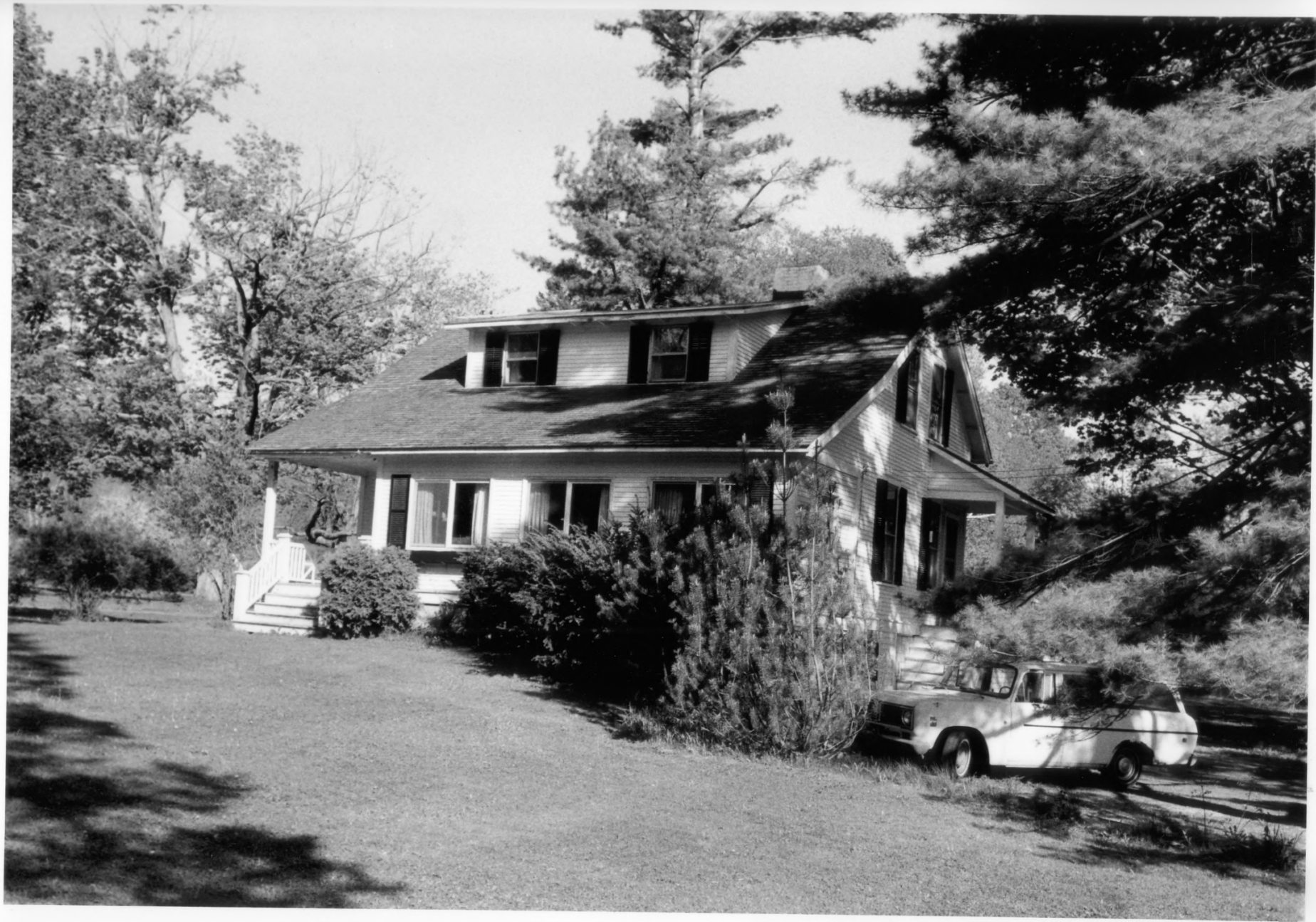
View looking SE

Photograph 11



84-A-424

Dorset Village Historic District
Dorset, Vermont
Credit: Hugh H. Henry
Date: May 1984
Negative Filed at Vermont Division
for Historic Preservation
Description: Bourn-Sheldon House
(#10) - N elevations; View look-
ing SE
Photograph 12



84-A-924

Dorset Village Historic District
Dorset, Vermont
Credit: Hugh H. Henry
Date: May 1984
Negative Filed at Vermont Division
for Historic Preservation
Description: Annie Sheldon House
(#11) - N, W elevations; View
looking SE
Photograph 13



84-A-424

Dorset Village Historic District
Dorset, Vermont
Credit: Hugh H. Henry
Date: June 1984
Negative Filed at Vermont Division
for Historic Preservation
Description: Codman House (#12)
E elevation; View looking W
Photograph 14



89-A-424

Dorset Village Historic District
Dorset, Vermont
Credit: Hugh H. Henry
Date: June 1984
Negative Filed at Vermont Division
for Historic Preservation
Description: Simeon Cheney House
(#13) - E elevation; View looking
SW
Photograph 15



84-A-424

Dorset Village Historic District
Dorset, Vermont
Credit: Hugh H. Henry
Date: May 1984
Negative Filed at Vermont Division
for Historic Preservation
Description: Rev. George Prentiss
House (#14) - W, S elevations;
View looking NE
Photograph 16



84-A-167

Dorset Village Historic District

Dorset, Vermont

Credit: Hugh H. Henry

Date: May 1984

Negative Filed at Vermont Division
for Historic Preservation

Description: The Manse (#15) - S,
E elevations; View looking NW

Photograph 17



84-A-424

Dorset Village Historic District
Dorset, Vermont
Credit: Hugh H. Henry
Date: June 1984
Negative Filed at Vermont Division
for Historic Preservation
Description: Rev. Parsons Pratt
House (#16) - S, E elevations;
View looking NW
Photograph 18



84-A-167

Dorset Village Historic District
Dorset, Vermont
Credit: Hugh H. Henry
Date: May 1984
Negative Filed at Vermont Division
for Historic Preservation
Description: Sears House (#17) -
E, N elevations; View looking SW
Photograph 19



84-A-167

Dorset Village Historic District
Dorset, Vermont
Credit: Hugh H. Henry
Date: May 1984
Negative Filed at Vermont Division
for Historic Preservation
Description: Musser House (#18) -
S, E elevations; View looking NW
Photograph 20



84-A-167

Dorset Village Historic District
Dorset, Vermont

Credit: Hugh H. Henry

Date: May 1984

Negative Filed at Vermont Division
for Historic Preservation

Description: Woodruff Hall (#19) -
E, N elevations; View looking SW
Photograph 21



84-A-167

Dorset Village Historic District
Dorset, Vermont
Credit: Hugh H. Henry
Date: May 1984
Negative Filed at Vermont Division
for Historic Preservation
Description: Armstrong-Field and
Whitehead Houses (#20, 21) - S, E
elevations; View looking NW
Photograph 22



84-A-169

Dorset Village Historic District
Dorset, Vermont
Credit: Hugh H. Henry
Date: May 1984
Negative Filed at Vermont Division
for Historic Preservation
Description: A. W. Harrington
House (#22) - S, E elevations;
View looking NW
Photograph 23



84-A-167

Dorset Village Historic District
Dorset, Vermont
Credit: Hugh H. Henry
Date: May 1984
Negative Filed at Vermont Division
for Historic Preservation
Description: Collins-Sykes House
(#23) - S, E elevations; View
looking NW
Photograph 24



84-A-169

Dorset Village Historic District
Dorset, Vermont

Credit: Hugh H. Henry

Date: May 1984

Negative Filed at Vermont Division
for Historic Preservation

Description: Hattie Gray House
(#24) - S, E elevations; View
looking NW

Photograph 25



84-R-424

Dorset Village Historic District
Dorset, Vermont
Credit: Hugh H. Henry
Date: June 1984
Negative Filed at Vermont Division
for Historic Preservation
Description: Dorset Inn (#25) -
S, E elevations; View looking NW
Photograph 26



84-A-167

Dorset Village Historic District

Dorset, Vermont

Credit: Hugh H. Henry

Date: May 1984

Negative Filed at Vermont Division
for Historic Preservation

Description: Harvey Holly House

(#26) - S, E elevations; View

looking W

Photograph 27



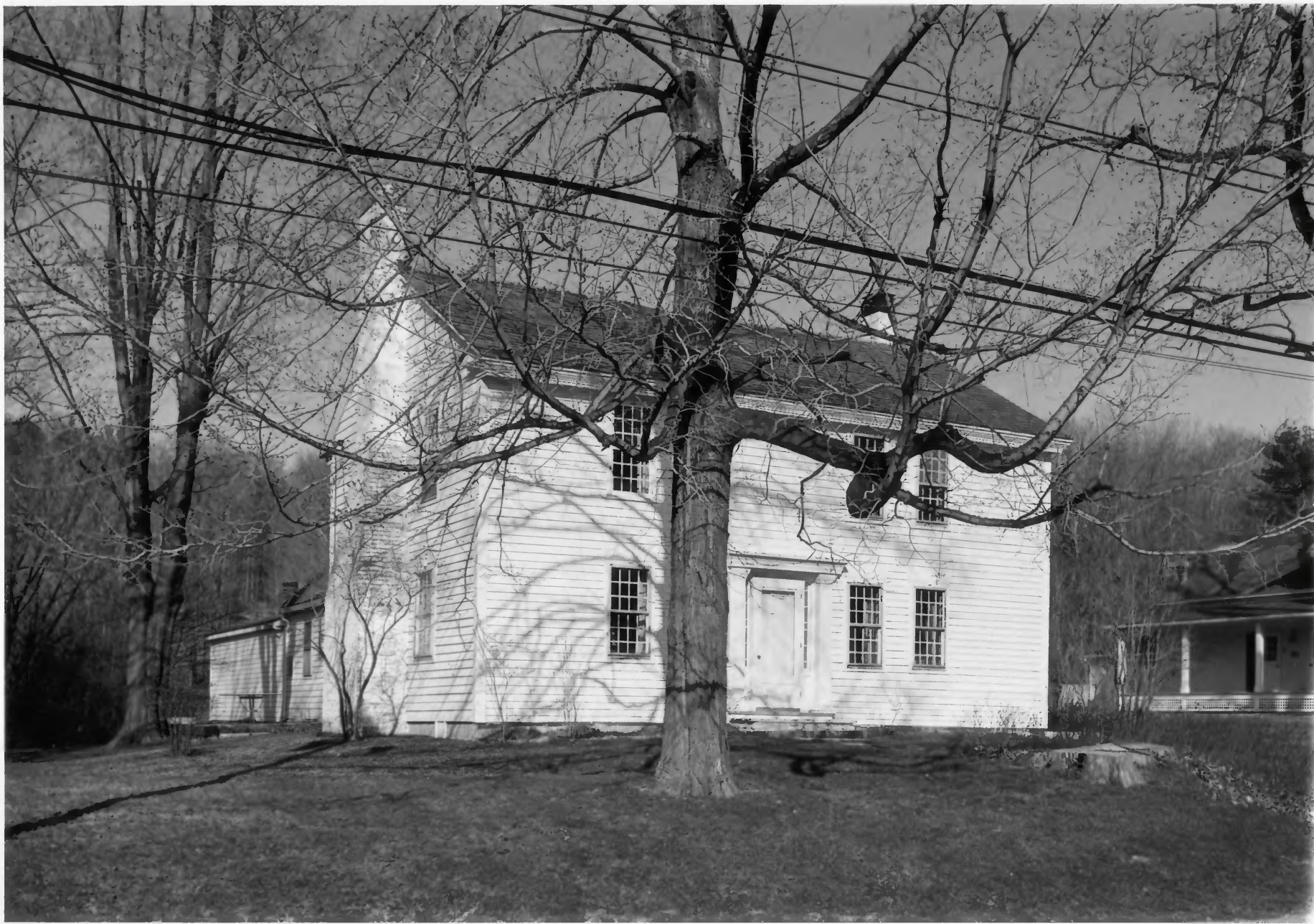
84-A-4124

Dorset Village Historic District
Dorset, Vermont
Credit: Hugh H. Henry
Date: June 1984
Negative Filed at Vermont Division
for Historic Preservation
Description: Tyler House (#27)
N, W elevations; View looking E
Photograph 28



84-A-166

Dorset Village Historic District
Dorset, Vermont
Credit: Hugh H. Henry
Date: April 1984
Negative Filed at Vermont Division
for Historic Preservation
Description: Atkinson-Lincoln
House (#28) - N, W elevations;
View looking E
Photograph 29



84A-166

Dorset Village Historic District
Dorset, Vermont
Credit: Hugh H. Henry
Date: April 1984
Negative Filed at Vermont Division
for Historic Preservation
Description: Samuel Collin-Hiram
Holley House (#29) - N, W eleva-
tions; View looking E
Photograph 30



84-7-166

Dorset Village Historic District
Dorset, Vermont
Credit: Hugh H. Henry
Date: April 1984
Negative Filed at Vermont Division
for Historic Preservation
Description: S. F. Holley House
(#30) - N, W elevations; View
looking E
Photograph 31



84-A-166

Dorset Village Historic District
Dorset, Vermont
Credit: Hugh H. Henry
Date: April 1984
Negative Filed at Vermont Division
for Historic Preservation
Description: Campbell House (#31)
N, W elevations; View looking E
Photograph 32



84-A-166

Dorset Village Historic District
Dorset, Vermont
Credit: Hugh H. Henry
Date: April 1984
Negative Filed at Vermont Division
for Historic Preservation
Description: Warren Dunton House
(#32) - N, W elevations; View
looking E
Photograph 33



84-A-424

Dorset Village Historic District
Dorset, Vermont
Credit: Hugh H. Henry
Date: June 1984
Negative Filed at Vermont Division
for Historic Preservation
Description: Batchelder House
(#33) - W elevation; View looking
NE
Photograph 34



84-A-166

Dorset Village Historic District
Dorset, Vermont
Credit: Hugh H. Henry
Date: April 1984
Negative Filed at Vermont Division
for Historic Preservation
Description: ex-Armstrong Store
(#34) - N, W elevations; View
looking E
Photograph 35



84-A-166

Dorset Village Historic District
Dorset, Vermont
Credit: Hugh H. Henry
Date: April 1984
Negative Filed at Vermont Division
for Historic Preservation
Description: Alonson Gray House
(#35) - N, W elevations; View
looking E
Photograph 36



84-A-166

Dorset Village Historic District
Dorset, Vermont
Credit: Hugh H. Henry
Date: April 1984
Negative Filed at Vermont Division
for Historic Preservation
Description: Marsha Gray House
(#36) - N, W elevations; View
looking E
Photograph 37



84-A-166

Dorset Village Historic District
Dorset, Vermont
Credit: Hugh H. Henry
Date: April 1984
Negative Filed at Vermont Division
for Historic Preservation
Description: Houghton House (#37)
N, W elevations; View looking E
Photograph 38



84-A-166

Dorset Village Historic District
Dorset, Vermont
Credit: Hugh H. Henry
Date: April 1984
Negative Filed at Vermont Division
for Historic Preservation
Description: H. B. Kent House (#38)
N, W elevations; View looking E
Photograph 39



84A-166

Dorset Village Historic District
Dorset, Vermont
Credit: Hugh H. Henry
Date: April 1984
Negative Filed at Vermont Division
for Historic Preservation
Description: Harwood House (#39)
N, W elevations; View looking E
Photograph 40



84-A-166

Dorset Village Historic District
Dorset, Vermont
Credit: Hugh H. Henry
Date: April 1984
Negative Filed at Vermont Division
for Historic Preservation
Description: Hazelton House (#40)
N, W elevations; View looking E
Photograph 41



84-A-166

Dorset Village Historic District
Dorset, Vermont
Credit: Hugh H. Henry
Date: April 1984
Negative Filed at Vermont Division
for Historic Preservation
Description: Snare Associates
office (#41) - N, W elevations;
View looking E
Photograph 42



84-A-167

Dorset Village Historic District
Dorset, Vermont

Credit: Hugh H. Henry

Date: May 1984

Negative Filed at Vermont Division
for Historic Preservation

Description: Wade House (#42) - W,
S elevations; View looking N

Photograph 43



84-A-424

Dorset Village Historic District
Dorset, Vermont

Credit: Hugh H. Henry

Date: June 1984

Negative Filed at Vermont Division
for Historic Preservation

Description: Rollin Weeks House and
ex-shop (#43, 44) - W, S eleva-
tions; View looking N

Photograph 44



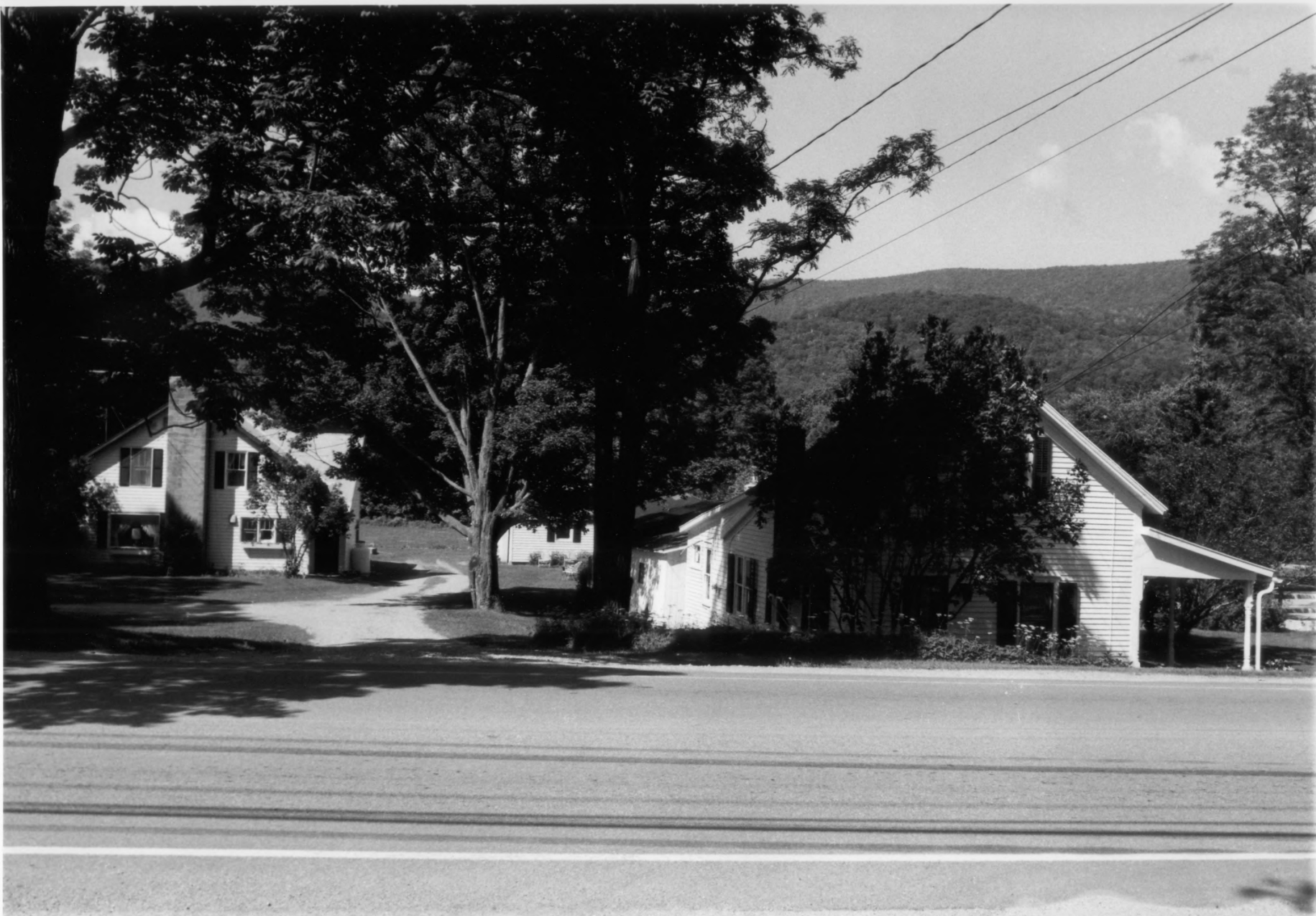
84-A-424

Dorset Village Historic District
Dorset, Vermont
Credit: Hugh H. Henry
Date: May 1984
Negative Filed at Vermont Division
for Historic Preservation
Description: Jackson-Barrows House
(#45) - W, S elevations; View
looking NE
Photograph 45



84A424

Dorset Village Historic District
Dorset, Vermont
Credit: Hugh H. Henry
Date: June 1984
Negative Filed at Vermont Division
for Historic Preservation
Description: Hatch House (#47)
E elevation; View looking SW
Photograph 46



89A-424

Dorset Village Historic District
Dorset, Vermont
Credit: Hugh H. Henry
Date: June 1984
Negative Filed at Vermont Division
for Historic Preservation
Description: Bushee and Warren
Houses (#48, 49) - E elevations;
View looking SW
Photograph 47



84-A-424

Dorset Village Historic District
Dorset, Vermont
Credit: Hugh H. Henry
Date: June 1984
Negative Filed at Vermont Division
for Historic Preservation
Description: Fisher-Batchelder
House (#50) - E, N elevations;
View looking SW
Photograph 48



84-A-167

Dorset Village Historic District
Dorset, Vermont
Credit: Hugh H. Henry
Date: May 1984
Negative Filed at Vermont Division
for Historic Preservation
Description: Fisher-Harrington
House (#51) - S, E elevations;
View looking W
Photograph 49



84-A-424

Dorset Village Historic District
Dorset, Vermont
Credit: Hugh H. Henry
Date: May 1984
Negative Filed at Vermont Division
for Historic Preservation
Description: Hodge-Harrington
House (#52) - E, N elevations;
View looking S
Photograph 50



84-A-167

Dorset Village Historic District
Dorset, Vermont
Credit: Hugh H. Henry
Date: May 1984
Negative Filed at Vermont Division
for Historic Preservation
Description: Towsley and McWayne
Houses (#53, 54) - S, E elevations
View looking W
Photograph 51



84A-167

Dorset Village Historic District
Dorset, Vermont
Credit: Hugh H. Henry
Date: May 1984
Negative Filed at Vermont Division
for Historic Preservation
Description: ex-Parks Store and
Parks House (#55, 57) - S, E ele-
vations; View looking W
Photograph 52



84A-167

Dorset Village Historic District
Dorset, Vermont

Credit: Hugh H. Henry

Date: May 1984

Negative Filed at Vermont Division
for Historic Preservation

Description: Hannah Newmann and
Hodge-Weeks Houses (#60, 61) -
S, E elevations; View looking W
Photograph 53



84-A-424

Dorset Village Historic District
Dorset, Vermont
Credit: High H. Henry
Date: May, 1984
Negative Filed at Vermont Division for
Historic Preservation
Description: Hannah Newmann and Hodge - Weeks
Houses (#60, 61) - E, N elevations; View
looking S
Photograph 54