

MAR 03 1988

## TENNESSEE MULTIPLE PROPERTY FORM

NATIONAL  
REGISTERTitle: Historic Resources of Williamson CountyHistoric Name: Glenn, Abram, House (WM-204)Common Name: Glenn, Abram, HouseClassification: BuildingOwner: Henry Allen, Route # 1, Nolensville, TN 37135Location: On McCannless Road, one and one-half mile east of Highway 41A.

<u>Contributing:</u>		<u>Non-Contributing:</u>	
Buildings	1	Buildings	0
Structures	0	Structures	0
Sites	0	Sites	0
<u>Total:</u>	1	<u>Total:</u>	0

Description:

The Abram Glenn House is composed of two single pen log structures joined by a frame breezeway. Constructed ca. 1815, the two-story log section served as the main residence while the rear one-story pen was added ca. 1825 and served as the kitchen. The two buildings were originally connected by an open breezeway but both log pens were covered with weatherboard and the breezeway enclosed ca. 1880. The kitchen has half dovetail notching, large logs with adze marks, and wood slat and mud chinking. The original chimney has been removed. The logs are exposed on the interior of the first story and it retains its original staircase. Connecting the two log pens is an open breezeway and an added ca.1880 shed.

The two-story pen has a ca. 1920 glass and frame door on the main facade and six-over-six sash windows. On the north and south facades are also paired six-over-six sash windows. The interior consists of one large room on each floor. The interior has diagonal lathe and plaster added ca.1880 and retains its simple Federal influenced mantles with Doric motif pilasters on both floors. Also intact is the corner enclosed staircase connecting the two floors. The logs in this pen are also half dovetail notched with wood slat and mud chinking. The house has a stone pier foundation and plaster lathe covering the original attic windows. The house has exterior brick chimneys and a gable roof of metal standing seam. There are no outbuildings. The house sits on a hill south of McCannless Road in a rural section of the county and is presently vacant.

Period of Significance: ca. 1815; ca. 1825; ca. 1880Area of Significance: ArchitectureCriterion: CArchitect/Builder: UnknownStatement of Significance:

The Abram Glenn House is a notable example of a single pen log complex from the early 19th century. The original log pen residence was constructed ca. 1815 and soon after a second log pen kitchen was added at the rear. These two log buildings were joined by an open breezeway. The two log pens were covered with weatherboard ca. 1880 and the open breezeway was enclosed. This progression of changes to log residences was common in the 19th century but few intact examples remain in the county. Two other examples of this house type, the Lamb-Stephens House (WM-1066) and the John Winstead House (WM-108), are included in the nomination. The house has not been altered since the late 19th century and retains its original design and setting.

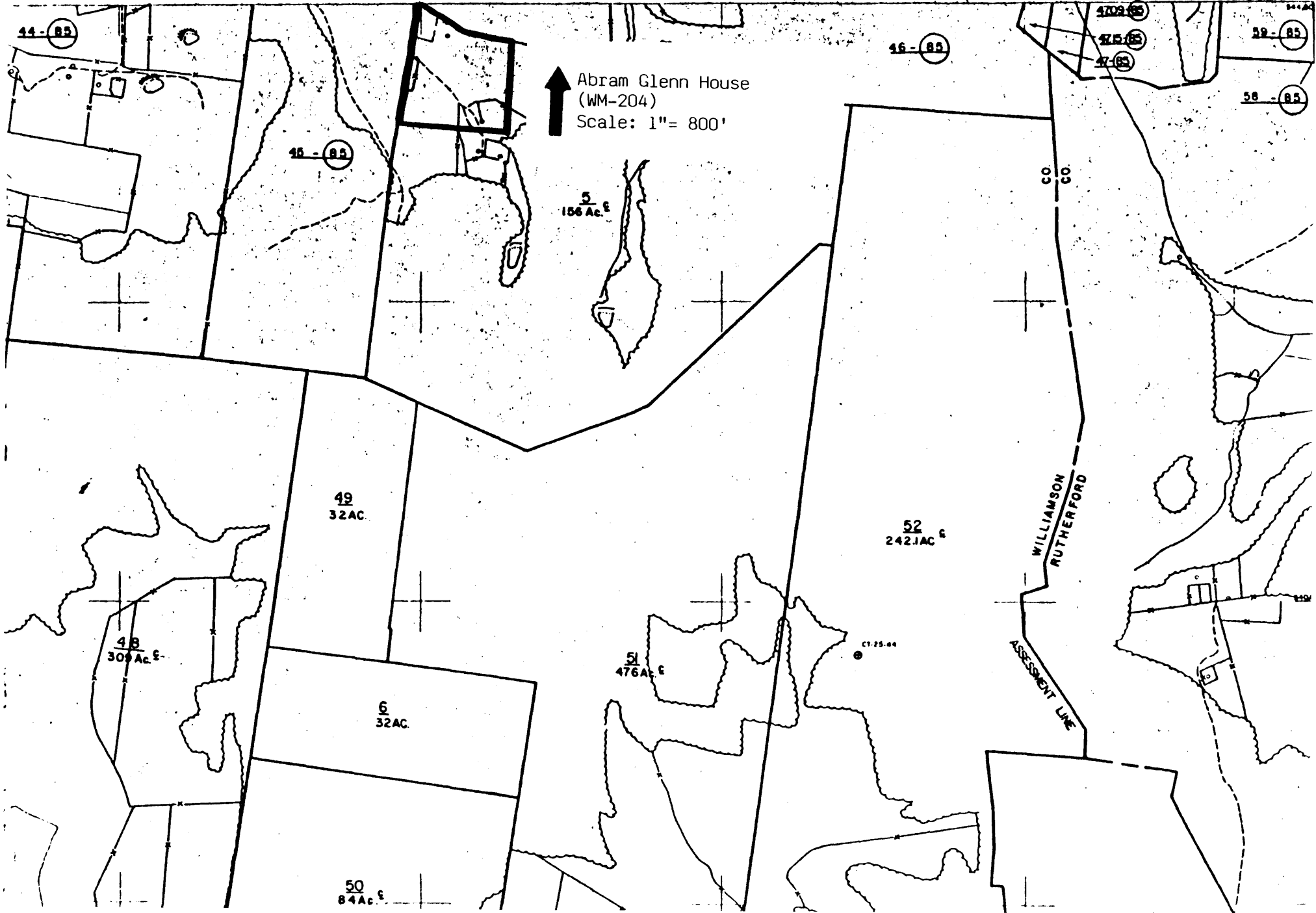
Abraham Glenn was born in North Carolina in 1762 and moved with his family to Tennessee in 1814. He purchased a small tract of the Jethro Sumner lands and constructed this residence ca. 1815. Glenn lived on this farm until his death in 1851. The property was then inherited by his son James H. Glenn who is listed on the 1878 map as owning 200 acres. James Glenn died in 1898 and the house has had several owners since that time. The Glenn House has not been occupied for several decades but it remains in good condition. It retains its original design and interior features and is a notable example of an early log residence.

Acreage: 11.2 acres

UTM References: Nolensville Quad/ A. 16/ 532960/3971060B. 16/533200/3970940  
C. 16/532920/3970780 D. 16/533180/3970740

Verbal Boundary and Justification: The boundary for the Abram Glenn House is illustrated on accompanying Williamson County tax map # 110, lot 5. The boundary is defined by a wire fence on the north and west and on the south and east by a line located 25 yards from the south and east facades of the house. The boundary is drawn to include the approaches to the house and adjacent fields and includes sufficient property to protect the historical setting of the site.

Supplemental Bibliographical References: Historic Williamson County; Bowman.



↑ Abram Glenn House  
(WM-204)  
Scale: 1" = 800'

44-85

45-85

46-85

47-85

47-85

48-85

49-85

5  
156 Ac. ±

49  
32 AC.

52  
242.1 AC. ±

48  
309 Ac. ±

6  
32 AC.

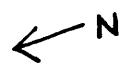
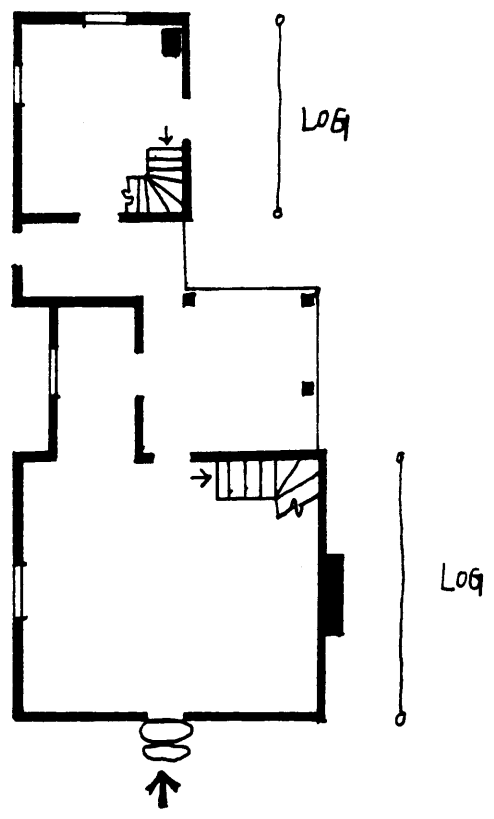
51  
476 AC. ±

CT-25-44

50  
84 AC. ±

WILLIAMSON  
RUTHERFORD  
ASSESSMENT LINE

#204 ABRAM GLENN  
HOUSE



\*NOT TO SCALE