

TENNESSEE MULTIPLE PROPERTY FORM

MAR 03 1988

Title: Historic Resources of Williamson CountyNATIONAL
REGISTERHistoric Name: Owen, Dr. Urban, House (WM-901)Common Name: Owen, Dr. Urban, HouseClassification: BuildingOwner: David Jean Jr., Route # 1, Box 9, College Grove, TN 37046.Location: On Highway 31A in College Grove.

<u>Contributing:</u>		<u>Non-Contributing:</u>	
Buildings	1	Buildings	0
Structures	0	Structures	1
Sites	0	Sites	0
<u>Total:</u>	1	<u>Total:</u>	1

Description:

The Dr. Urban Owen House is a two-story frame, side passage plan vernacular residence constructed in 1873. On the main (west) facade is a two-story porch with square columns. Over the recessed entrance is a spindled frieze, vergeboard, and cut-out panels. The second story balcony has milled spindles and a turned spindle frieze with cut-out panels and drop pendants. The main entrance has an original Eastlake design door with original border glass lights. Over the door is a pedimented hood with vergeboard decoration and a multi-light stained glass transom.

The house has a gable roof, beaded weatherboard siding, and a stuccoed concrete and stone pier foundation. The windows are six-over-six sash on the first story and four-over-four sash on the second story. The second story windows have pedimented hoods with incised floral decoration. The door on the south facade is the original four-panel design. The porch on the south facade was added ca.1910 with Doric motif columns. The rear porch has been removed, but the original doors of glass and frame remain. The interior was inaccessible but according to the owner it retains original four-panel doors, Eastlake design mantles, crown molding, and side passage floor plan. At the rear is a ca.1950 frame garage. The house sits on an urban lot in the community of College Grove.

Period of Significance: 1873Area of Significance: ArchitectureCriterion: CArchitect/Builder: UnknownStatement of Significance:

The Dr. Urban Owen House is a notable example of a side passage plan

vernacular residence of the late 19th century. The house is one of the few side passage plan designs extant in the county from this period and retains its original porch and decorative detailing on the main facades. This vernacular form is rare in the county and the Owen House is an excellent example of the style. Alterations to the house have been confined to the rear facade and do not negatively impact its appearance.

Dr. Urban G. Owen was the first practicing surgeon in College Grove. He was born in 1833 at Owen Hill which is south of College Grove. He completed his medical training at the Universities of Pennsylvania and New York and afterward he returned to College Grove in 1858 to open his practice. He married Laura Anne Dobson in 1859 and practiced medicine in the community until 1861 when he joined the Confederate army. Owen enlisted in Company D of the Twentieth Tennessee Regiment and later served as surgeon in the Fourth Confederate Infantry. After serving the duration of the war Owen returned to College Grove where he resumed his practice.

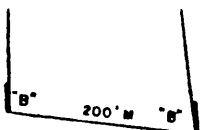
In 1873, Owen constructed this two-story frame residence in the center of College Grove. The house he built was a side passage frame residence with extensive millwork and decoration. Owen remained College Grove's one practicing physician during the late 19th century. He built a small one-story frame office in front of his residence where he treated the sick and infirm. The office no longer remains. During his life Owen was regarded as one of the leading men of the community because of his devotion to his profession. In 1886, Owen was profiled in the Goodspeed bibliographical index. Dr. Owen died in 1903, and the house remained in the hands of the Owen family well into the 20th century. The house has recently been restored and continues to display its original appearance and detailing.

Acreage: 2.2 acres

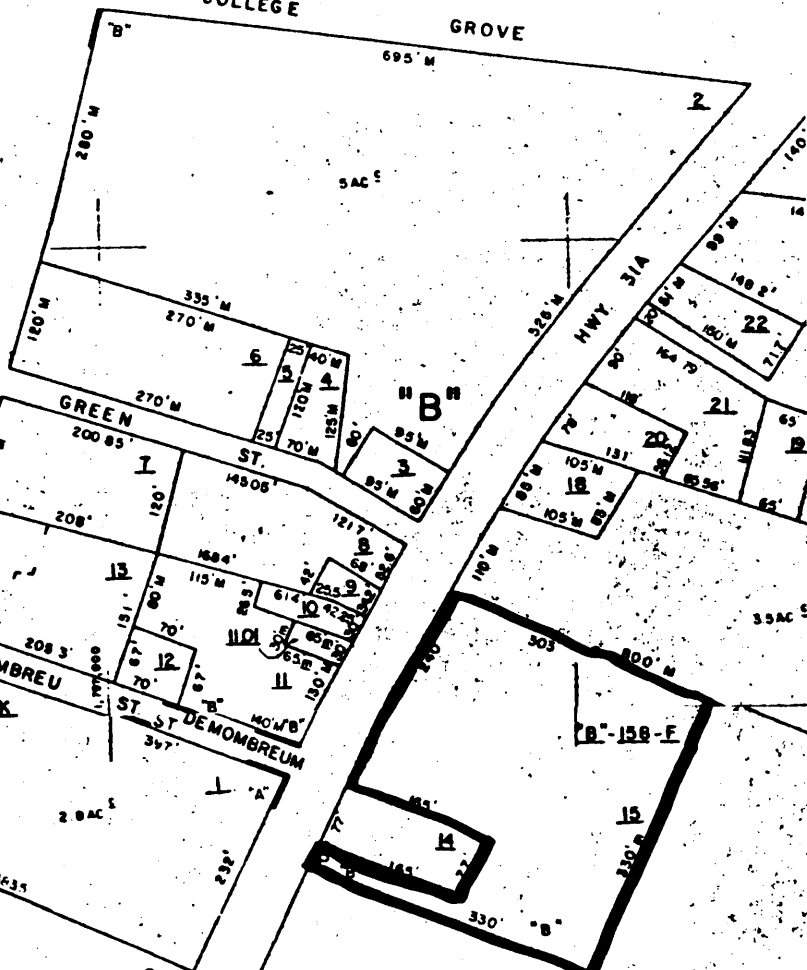
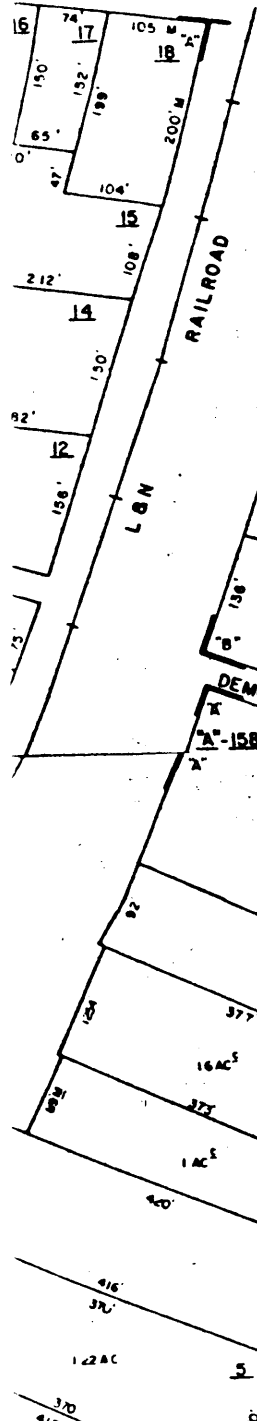
UTM References: College Grove Quad/16/529 300/3960020

Verbal Boundary and Justification: The boundary for the Dr. Urban Owen House is illustrated on accompanying Williamson County tax map # 158-K, lot 15. The boundary is drawn to include all property historically associated with the house and to protect its historical site and setting.

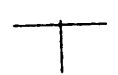
Supplemental Bibliographical References: Goodspeed History of Tennessee



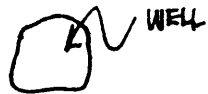
COLLEGE GROVE



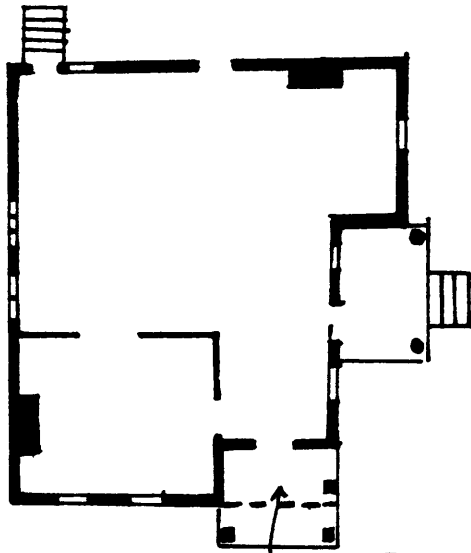
↑ Dr. Urban Owen House (WM-901)
Scale: 1" = 200'



901 DR. URBAN OWEN HOUSE



← N



2ND STORY BALCONY

NOT TO SCALE