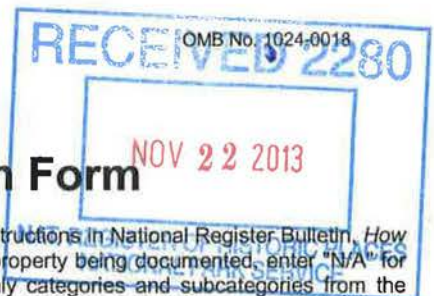


1043



National Register of Historic Places Registration Form

This form is for use in nominating or requesting determinations for individual properties and districts. See instructions in National Register Bulletin, *How to Complete the National Register of Historic Places Registration Form*. If any item does not apply to the property being documented, enter "N/A" for "not applicable." For functions, architectural classification, materials, and areas of significance, enter only categories and subcategories from the instructions. **Place additional certification comments, entries, and narrative items on continuation sheets if needed (NPS Form 10-900a).**

1. Name of Property

Historic name Trout, George and Virginia, House
Other names/site number KHRI # 149-5660-00010
Name of related Multiple Property Listing N/A

2. Location

Street & number 615 Elm Street not for publication
City or town Wamego vicinity
State Kansas Code KS County Pottawatomie Code 149 Zip code 66547

3. State/Federal Agency Certification

As the designated authority under the National Historic Preservation Act, as amended,

I hereby certify that this nomination request for determination of eligibility meets the documentation standards for registering properties in the National Register of Historic Places and meets the procedural and professional requirements set forth in 36 CFR Part 60.

In my opinion, the property meets does not meet the National Register Criteria. I recommend that this property be considered significant at the following level(s) of significance:

national statewide local Applicable National Register Criteria: A B C D

Patrick Zollner Signature of certifying official/Title Patrick Zollner, Deputy SHPO Date 11-19-13

Kansas State Historical Society
State or Federal agency/bureau or Tribal Government

In my opinion, the property meets does not meet the National Register criteria.

Signature of commenting official _____ Date _____

Title _____ State or Federal agency/bureau or Tribal Government _____

4. National Park Service Certification

I hereby certify that this property is:

entered in the National Register determined eligible for the National Register

determined not eligible for the National Register removed from the National Register

other (explain) _____

For Edson H. Beall Signature of the Keeper Date of Action 1-8-14

Trout, George & Virginia, House
Name of Property

Pottawatomie County, Kansas
County and State

5. Classification

Ownership of Property
(Check as many boxes as apply.)

- private
- public - Local
- public - State
- public - Federal

Category of Property
(Check only one box.)

- building(s)
- district
- site
- structure
- object

Number of Resources within Property
(Do not include previously listed resources in the count.)

Contributing	Noncontributing	
1	1	buildings
		sites
		structures
		objects
1	1	Total

Number of contributing resources previously listed in the National Register

0

6. Function or Use

Historic Functions
(Enter categories from instructions.)

Domestic: single dwelling, mansion

Current Functions
(Enter categories from instructions.)

Domestic: single dwelling, residence

7. Description

Architectural Classification
(Enter categories from instructions.)

Late Victorian: Queen Anne (Free Classic)

Materials
(Enter categories from instructions.)

foundation: Stone: limestone
walls: Wood: weatherboard; shingle
roof: Asphalt
other: Brick (chimney)

Trout, George & Virginia, House
Name of Property

Pottawatomie County, Kansas
County and State

Narrative Description

(Describe the historic and current physical appearance and condition of the property. Describe contributing and noncontributing resources, if applicable. Begin with a **summary paragraph** that briefly describes the general characteristics of the property, such as its location, type, style, method of construction, setting, size, and significant features. Indicate whether the property has historic integrity.)

Summary

The George and Virginia Trout House (1896) is located at the southwest corner of 7th and Elm streets in a late 19th-century residential neighborhood one block east of downtown Wamego in Pottawatomie County, Kansas. The Queen Anne-style house is situated on three lots and faces east toward Elm Street. The house measures 48' by 62' and includes two-and-a-half stories plus attic spaces. The house is well-preserved with many original features inside and out. It was built for George Trout, a prominent local businessman and banker, by Francis M. Spencer of Topeka. There is a non-contributing granary/storage building at the southwest corner of the property along the alleyway.

Elaboration

The exterior of the Trout house is imposing by any analysis of its characteristics. Situated on the high prominent southwest corner of 7th and Elm streets in the heart of Wamego, it dominates the surrounding neighborhood. The juxtaposition of its major elements - the three-story round tower at the northeast corner, the one-story east-facing front porch, the three-story southeast projection (rectangular bay) with an open-air third-story porch, the south two-story bay with a plan in the shape of an arc (with bow windows), the two-story 3-sided cant bay on the north elevation, and the two-story west wing in concert with steeply pitched hip and gable roof lines - create a constant interplay of form and function. The core of the house is simply a 48-foot square two-and-a-half-story box with a hipped roof. However, this core is elegantly masked by the various two- and three-story projections. The verticality of the extensions at the northeast and southeast corners further contributes to the building's sense of enormity.

The exterior of the house is clad in wood lap siding with fish scale shingles in the upper portions of the gables and towers. The home's original wood windows are intact, the majority of them having one-over-one sash configuration. The roof has asphalt shingles (originally clad in slate) and the foundation is made of limestone. Two large brick chimneys, serving fireplaces in four rooms, extend above the 45'-6" roof peak. A smaller brick chimney serves the west wing, which is devoted to the kitchen on the first floor and the servant's quarters on the second floor.

A one-story porch is centered on the **east (front) elevation** between a three-story projection at the southeast corner and a three-story round tower at the northeast corner. Originally, this porch wrapped around the south side of the house, but it was partially removed to reflect its current appearance by the early 1940s. (Figures 1-3.) The porch features a cut stone base and rail, and supports two groupings of three classical wood columns that support the flat roof. A second-floor door provides access to the roof, but the balustrade that once enclosed the space has been removed. On either side of the second-floor door is a one-over-one window. The three-story projection at the southeast corner has a rectangular base and form, an open-air third-floor porch, and a hipped roof. This projection features two of the home's more impressive windows - a large single-pane window with a stained glass transom on both the first and second floors. The three-story round tower is attached to the northeast corner of the house. It has nine windows in all.¹

The **north (side) elevation** faces 7th Street. Centered on the elevation is a two-story gabled bay with six one-over-one windows - three on the first story, two on the second story, and one centered in the gable. The gable is clad in fish scale shingles.

The **west (rear) elevation** is a complex arrangement of rooflines. There is a small angled porch tucked in the corner between the main core of the house and an intersecting gabled wing at the southwest corner. This small porch faces northwest and was enclosed in recent years. Above the porch on the second story is a small angled bay tucked beneath the roofline of the main core of the house. The west-facing elevation of the gabled wing has three first-story windows and one second-story window.

¹ The 1896 newspaper article said the round tower extended 50 feet above the ground with windows featuring bent glass.

Trout, George & Virginia, House
Name of Property

Pottawatomie County, Kansas
County and State

The **south (side) elevation** faces a sizeable fenced yard. The two-story gabled wing includes a one-story porch with a flat roof supported by full-height square columns. A door at the southwest corner leads into the kitchen. A second-floor door provides interior access to the roof, but the balustrade that once enclosed the space has been removed. Centered on this south elevation is a two-story circular tower, although it is less of a separate design element and more of a mere bulge from the main core of the house. The tower includes nine windows – three on each of the first and second stories and three small basement windows. The upper sash of the central first-story window includes elaborate stained glass. The tower's hipped roof is partially cone-shaped. A towering brick chimney is situated immediately east of the round tower. The east corner of this south elevation includes the three-story rectangular projection with an open-air third-floor porch, and a hipped roof (described above).

Interior

The interior of the residence retains most of its original finishes. The oak and pine trim has its original finish with the exception of the main floor bathroom, which has been refinished. Plaster walls remain throughout much of the house, except in the kitchen and pantry where the walls were overlaid with drywall during a 1970s-era remodel. Walls throughout the first and second floors are decorated with Lincrusta, and embossed wall covering.² All windows and doors are original, except for one on the third floor in the north room. The ceiling height is 10 feet on the first floor, nine feet on the second floor, and eight feet on the third floor. Central air-conditioning and heat were added to the kitchen and pantry area in the 1970s, and a new furnace and air conditioning unit were added in 2007. The original radiators are supplied by a newer boiler installed in 2007.

The main entrance to the home is centered on the east elevation and includes a set of original oak double doors with beveled glass (measuring 3'x8') and leaded sidelights and a leaded stained glass transom. The doors open into a 3' x 9' vestibule and another set of double doors. These inner swinging doors are oak with three wood panels and beveled glass. The floor is original tile from Stratford, England and the plaster walls include wallpaper on the upper half and Lincrusta on the lower half of the wall. It is topped with oak trim.

The entry vestibule opens into a large **central reception hall**, which provides access to the various first floor rooms and the formal staircase to the upper floors. The floor is original maple hardwood laid in a diagonal pattern, as it is in all the first floor rooms except the kitchen. The lower half of the walls feature a decorative Lincrusta topped with oak trim. This great hall provides access to the ladies' parlor on the right (at the northeast corner of the house), a men's parlor on the left (at the southeast corner of the house), a dining room occupying the south-central first floor space, and a changing parlor in the north-central space. The focal point of the central hall is the dramatic staircase to the upper floors at the northwest corner. At the base of the dog-leg staircase is a built-in oak seat and a full-height square fluted column with a cross-shaped capital with floral embellishments, both directly opposite the home's entrance. This space is illuminated by a light fixture resembling a bunch of grapes, supported by a chain swag. Directly behind the built-in seat is the service pantry, which has a curved radiator with a marble top. Above the radiator on the wall is a push button to ring a bell on the second floor to call people to dine. This area has an oak built-in cabinet with drawers and a door to store dining room table leaves. There is also a wood panel door tucked beneath the staircase that leads to the rear hall. Centered on the south wall of the reception hall is a Victorian wall niche.

The ladies' parlor is situated at the northeast corner of the first floor, and is separated from the reception hall by a set of six-panel oak pocket doors. The parlor occupies the round tower and has three curved glass windows at the northeast corner. In the room's northwest corner is an original coal-burning fireplace surrounded by a floor-to-ceiling carved cherry mantle with a large, round, beveled mirror. Burgundy English tile surrounds the opening and extends out in front on the floor. To the left of the fireplace, on the room's west wall, is a doorway leading into the changing room.

The changing room has a fireplace with a rectangular mirror. Yellow English tile with a floral design surrounds the opening, which features an ornate cast iron cover. The north wall has three windows with a low radiator beneath. The west wall has a four-panel door that leads to the main floor bathroom. This door is maple on the changing room side and oak on the bathroom side. The south wall has a doorway leading to the reception hall at the base of the main staircase.

The main floor bathroom has an original claw-foot tub. There is bead board wainscoting on the lower part of the walls, and another wood panel door on the south wall leading to the rear hall. This door is oak on the bathroom side, pine on the hall side. The marble sink has the original fixtures, and there are brass and glass towel rods.

² Catherine Lynn, *Wallpaper in America From the Seventeenth Century to World War I* (New York: W. W. Norton, 1980), 442-443.

Trout, George & Virginia, House
Name of Property

Pottawatomie County, Kansas
County and State

Across the reception hall to the south is **the gentlemen's parlor**, which occupies the southeast corner of the first floor. Opposite the ladies' parlor, it features a fireplace on the west wall with a wood mantel and tile around the opening and the floor in front. It has been converted from coal to gas. The south wall has a window with a lower section that can swing out converting the opening to a door. There are three windows in the southeast corner of the room. The center window is a large picture window with a leaded, stained glass transom. There is paneled wainscoting beneath the windows on either side of the picture window. An original bookcase with beveled glass doors is on the north wall next to the oak panel pocket doors that lead back into the reception hall.

The dining room is accessed from the reception hall through a set of oak panel pocket doors. This room boasts several impressive features. It is also accessed from the gentleman's parlor through a single pocket door on the east wall. There is a large built-in oak buffet with doors, drawers, curved front and mirrors on the west wall adjacent to a radiator that doubles as a warming oven. The room's south wall is rounded with three curved-glass windows. The top sash of the center window is leaded stained glass in a green and pink color. The east wall has a coal-burning fireplace with cream-colored English tile painted with scenes of hunting dogs and human figures surrounding the opening. Beside the fireplace to the north is a built-in oak china cabinet with two panel doors on the bottom, two glass doors on the top and an oak cornice on the top. The open wall spaces include picture rails at the same height as the tops of the windows.

A swinging wood-panel door on the west wall of the dining room provides access to **the kitchen**, which is located at the southwest corner of the main floor. It was remodeled in the 1970s combining two original rooms. The plaster walls were covered with drywall and the original pine floor was covered with simulated wood laminate. Original pine cupboards, including the ones in the original butler pantry area along the east wall, were saved. These include a laundry chute and mop closet. New cupboards were added in a large, center, floor-to-ceiling island which houses a stove, double oven, sink, dishwasher and small bar sink. Additional cupboards were also added to the north and south walls. The new cupboards were custom made to match the original style. There are two windows on the south wall and two on the west. An exterior door with a transom window at the southwest corner leads to an open-air porch. There is a doorway at the northwest corner of the kitchen leading to a small pantry with a window and original pine cupboards.

A door on the north wall of the kitchen leads to the **rear hall** has carpet over the maple floors. There is a coat closet on the west wall and another closet under the maid's stairway. There is an exterior door with a transom window on the northwest wall. The carpeted maid's stairway curves up to the landing door. There is a fire hose on the wall in this stairway, connected to a large cistern on the 3rd floor.

Second Floor

A central staircase provides access to the second floor. The formal dog-leg staircase leading from the reception hall joins with the less formal servant's staircase from the rear hallway on the landing. The formal staircase features modern carpet and is elaborately decorated with oak paneling on the ceiling and Lincrusta with oak trim on the bottom portion of the walls. At the top of the stairs is a square, fluted newel post topped with a brass cherub light fixture from England. An oak bench seat with built-in cupboards is to the right at the top of the stairs. The top of the staircase terminates in a central location with a more formal front hall straight ahead to the east and a less formal back hall around to the south and west. At the very east end of the formal hall there are oak bench seats with built-in cupboards lining either side of the hallway. On the east wall is a unique opening that functions as both a door and window. The lower part of the wall can open allowing access onto the front porch roof.

There four bedrooms accessed by this **main central hall**, which features dramatic rounded walls accented by Lincrusta and oak trim on the bottom portion of the walls. High up on the south wall near the staircase is the original brass service call bell. The bell hangs from a brass cut-out of a boy swinging a hammer at the bell. The service call system was originally described as an annunciator. The pine floors on the second floor are carpeted except for the sewing room at the rear of the house. The four main bedrooms have the original push-button light switches, hardware, plumbing, windows, light fixtures and woodwork. The bedroom and bathroom entrance doors all have transom windows.

The southeast corner room is known as **the Red Room**, at least according to the service call box. It was George Trout's bedroom, and it still houses his original bed and marble-top dresser with a mirror. This area is situated directly above the gentlemen's parlor. There is a projection to the southeast with three windows – the center one is a dramatic picture window topped with a leaded, stained glass window. There is a walk-in closet on the west wall with built-in cupboards, shelves and several clothes hooks. Beside the closet, inset into the west wall, is a marble sink and vanity area.

Trout, George & Virginia, House
Name of Property

Pottawatomie County, Kansas
County and State

Across the hall is the northeast corner bedroom known as **the White Room**, at least according to the service call box. It was Virginia Trout's bedroom, and exhibits more feminine elements. For instance, it has a vanity area built into the west wall that features a sink basin with a floral design. The woodwork is painted a cream color. The northeast corner is curved with three curved glass windows, just as the ladies' parlor directly below. There is a walk-in closet on the west wall with a built-in chest of drawers and shelves above it. A wood beam extends across the ceiling mid-way through the room.

Adjacent to the White Room is **the northwest bedroom**, which has a small walk-in closet with a curved wall. The room is accessed from the main hallway near the top of the stairs. The room has a large marble-topped round radiator and a functioning sink and vanity area. The west portion of the room has a sitting area with a small closet, radiator, and window. There is a large wood-trimmed opening into the sitting room. This room is wallpapered and has wool carpeting.

Across the hallway and adjacent to the Red Room is a fourth **bedroom**. This room is situated above the dining room and features a rounded south wall with three curved glass windows. On the east wall is a vanity area with a marble top sink, mirror and built-in cupboard above. This sink is still operational. There is a large round radiator with a marble top on the west side. The north wall has a walk-in closet with a curved wall, built-in cupboards, and shelves.

The narrower **back hall** provides access to the second-floor bathroom, a sewing room, and the maid's bedroom. On the north side of the hall is a second fire hose and a **sewing room** with a small storage area under the eaves and a large floor-to-ceiling built-in cupboard with two tall doors above four drawers. At the west end of the hall is a large off-season closet with a small round window, many clothing hooks and four cupboards built into the eaves.

Adjacent to the south-central bedroom is the **second-floor bathroom**, which is accessed just off the main hall on the secondary back hallway. Oak wainscoting covers the lower part of the walls; on the east wall there is a built-in oak linen closet with a laundry chute that goes to the basement. A claw foot tub is to the south of the closet and a toilet is to the north. The west wall has a marble counter with a bottom-mount porcelain sink. There are brass towel rods by the sink and tub; one is a lion head with a ring below.

The maid's room or fifth bedroom is at the southwest corner. It includes an exterior door on the south wall that leads to the side-porch roof. A chimney from the kitchen comes up through this room and has a finished wall around it.

Third Floor

A wide stairway with a landing midway up leads to the third floor. From the large landing at the top of the stairway there is a small room to the left (north) with a north window and slanted ceilings. This room was unfinished until the current owners finished it in 2009. Drywall, wood trim and paint were added and the pine floor was refinished.

The central staircase continues to the third floor, with a landing midway. The staircase opens into a small central hall. Directly across from the top of the stairs, to the east, is a **large ballroom**. The angled ceiling conforms to the pitch of the roof. There is a round space at the northeast corner situated above the White Room on the second floor and the ladies' parlor on the first floor. This space has three windows. There is a rectangular extension of this room at the southeast corner, which is situated above the Red Room on the second floor and the gentlemen's parlor on the first floor. This space includes a door to the exterior, open-air balcony and a small window on each side door. The entire ballroom has lathe and plaster walls and wood trim and floor.

At the north end of this third-floor central hall is a door leading into a small room with a north window and an angled ceiling that conforms to the pitch of the roof. This room was unfinished until the current owners finished it in 2009. Drywall, wood trim and paint were added and the pine floor was refinished.

At the south end of the central hall is an unfinished room with a pine floor. A small room at the southwest corner of the hall houses a large metal cistern (1000 gallons) and a small water heater. It is believed that this tank was filled using a windmill that was behind the house.³ A drop-down stairway was installed in 2008 to gain access to attic space above the ballroom.

³ The Sanborn Fire Insurance Maps document the existence of a windmill at the northwest corner of the property. See figures 1 and 2.

Trout, George & Virginia, House

Pottawatomie County, Kansas

Name of Property

County and State

Basement

The basement is accessed through a door on the south side of the house and/or through the back hall. Carpeted wood steps lead down from the back hall to the concrete slab floor that covers the entire basement except for the boiler room and two coal rooms, which have brick floors. The basement walls are limestone and stucco. There is an original central vacuum unit and a swamp cooler also in the basement. A laundry chute opens into the laundry area from the kitchen pantry and the second floor bathroom. There is a bathroom stool and utility sink near the laundry area. The basement does not extend under the kitchen area, which is built over a crawl space.

Granary/Storage Building (Constructed 1940s, non-contributing)

A **granary/storage building** measuring 14' x 63' is built along the alley at the southwest corner of the property. The south end of the building has a tilt-up garage door providing access to a 14' x 21' space. The rest of the building is divided into 4 separate storage rooms, each accessible by doors along the west (alley) side. The wood-frame building has an asphalt shingled roof and asbestos composition siding. It was built in the 1940s by the Funnell family. The wall structure is 2 x 6 framing sheathed on the outside with tongue-and-groove pine boards installed on the diagonal. The inside walls are covered with 1x10 pine lapped boards. Partitions between sections are 2 x 6 framing with the 1x10 boards on both sides. Flooring is tongue-and-groove 5-inch pine. Interior walls were originally cross braced to withstand the loads of bulk grain, but these have been removed, leaving only the cut-off ends of the boards.

Integrity

The house retains an exceptional degree of integrity on the interior and exterior. All seven aspects of integrity (location, design, setting, materials, workmanship, feeling, and association) are strong. The most drastic change was to the front porch (likely in the early 1940s) when the portion wrapping around the southeast corner was removed to reflect its current appearance.

Trout, George & Virginia, House
Name of Property

Pottawatomie County, Kansas
County and State

8. Statement of Significance

Applicable National Register Criteria

(Mark "x" in one or more boxes for the criteria qualifying the property for National Register listing.)

- A Property is associated with events that have made a significant contribution to the broad patterns of our history.
- B Property is associated with the lives of persons significant in our past.
- C Property embodies the distinctive characteristics of a type, period, or method of construction or represents the work of a master, or possesses high artistic values, or represents a significant and distinguishable entity whose components lack individual distinction.
- D Property has yielded, or is likely to yield, information important in prehistory or history.

Areas of Significance

Architecture

Period of Significance

1894-1896

Significant Dates

1896

Significant Person

(Complete only if Criterion B is marked above.)

N/A

Cultural Affiliation

N/A

Architect/Builder

Spencer, Francis M. (builder)

Criteria Considerations

(Mark "x" in all the boxes that apply.)

Property is:

- A Owned by a religious institution or used for religious purposes.
- B removed from its original location.
- C a birthplace or grave.
- D a cemetery.
- E a reconstructed building, object, or structure.
- F a commemorative property.
- G less than 50 years old or achieving significance within the past 50 years.

Period of Significance (justification)

The period of significance is 1894-1896, the years the house was constructed.

Criteria Considerations (justification)

N/A

Trout, George & Virginia, House
Name of Property

Pottawatomie County, Kansas
County and State

Narrative Statement of Significance

(Provide a summary paragraph that includes level of significance, applicable criteria, justification for the period of significance, and any applicable criteria considerations.)

Summary

The George and Virginia Trout House is nominated to the National Register of Historic Places for its local significance in the area of architecture. Completed in 1896, the residence clearly reflects the Queen Anne style in its irregular form, asymmetrical arrangement, multiple roof planes, three-story rounded tower with a conical roof, and wood materials. It includes a combination of lap siding and fish scale shingles. Its porches and gables lack the delicate spindlework of earlier Queen Anne houses, and instead include classical columns grouped in threes supporting the front porch. The interior still retains the ornate radiators, a still-functioning call-box system, a central vacuum, four ornate and unique fireplaces, a 1,000 gallon water tank on the third floor with fire hoses, and an impressive display of woodwork throughout the first and second floors.

Elaboration

Pottawatomie County was created by the Kansas Territorial Legislature out of Riley County in 1857. The area's earliest settlers were Catholic missionaries who established a mission at St. Marys in 1848 ahead of the Potawatomi Indians, who had been moved from district to district by the federal government. St. Marys was situated along the Oregon Trail, which passed through northeast Kansas and was used by emigrants in the mid-19th century as they made their way westward. In 1860, just prior to statehood, the county's population totaled 1529, and by 1870 the population had climbed to 7848.⁴

Louisville served as the county's first seat of government until 1882 when it was moved to Westmoreland, which is 15 miles north of Wamego. Under the auspices of the Wamego Town Company, Hugh S. Walsh platted Wamego in 1866. It is situated along the north bank of the Kansas River, which forms the southern boundary of Pottawatomie County. The Union Pacific Railroad (later Kansas Pacific) pushed through Wamego in the mid-1860s and built a roundhouse and shops there.⁵ Wamego's location along the Kansas River and the railroad line made it an important local shipping center. The railroad shops and roundhouse had relocated to Junction City by 1890. By 1900 the population of Wamego was 1618, making it the most populous city in Pottawatomie County, as it is today with a population of about 4400.

One of Wamego's early settlers was George Trout, who came to Kansas after the Civil War. George Trout was born May 28, 1843 near Harrisburg, Pennsylvania and later moved with his family to Iowa. After serving in the Civil War, he came to Topeka to work at his trade as a tinsmith. In 1867 he moved to Wamego and opened a tin shop with a small stock of goods. In 1869, Trout partnered with L. B. Leach

...in the hardware and implement business. They also bought grain and bought and sold horses, and engaged in several other lines that offered profit in those days. In that year they built the first part of a building occupied by the Iron Clad Store, which is one of the landmarks of the town. In those days both Mr. Trout and Mr. Leach did a great amount of hard labor. There were no walks or graveled streets then but nearly all of their goods were hauled from the cars on a wheelbarrow, and implements were often put together by the light of the moon or a smoking torch. They also engaged in the lumber business. In 1881 their business had grown to such proportions that they opened a banking office to handle their collections and notes. This bank continued as a private bank until 1906, when a charter was taken out and the Wamego State Bank is the successor of the old Wamego Bank, owned by Trout and Leach.⁶

⁴ Frank Blackmar, *Kansas: A Cyclopedia of State History, Vol. II* (Chicago: Standard Publishing Co., 1912), 490-492.

⁵ William Cutler, *A History of the State of Kansas* (Chicago: Andreas Publishing Co., 1883), 979-980.

⁶ George Trout's obituary, *Wamego Reporter*, 10 August 1911; reprinted in Inez Owens, *Welcome to Wamego, Kansas 1876-1976: The American Bicentennial Year 1776-1976* (Wamego, KS: Owens, 1977), 88.

Trout, George & Virginia, House

Pottawatomie County, Kansas

Name of Property

County and State

Trout married Henrietta Virginia (Jenny) Clary, the daughter of Nathaniel and Sarah Clary, in the early 1870s. George and Virginia purchased a house on one lot on Elm Street from the Clarys in 1876, and it served as the Trout family residence until the construction of the nominated residence in 1896.

The three lots on which the Trout House is situated were originally sold by the Wamego Town Site Company to Joshua Clardy in 1868 for \$100. Clardy then sold the southernmost lot on April 6, 1871 to William C. Crawford for \$300. Crawford apparently built a house on the lot and sold it for \$1000 to Nathaniel H. Clary in 1872. The Clarys then sold the house and lot to their daughter, Virginia Trout, in 1876. In 1880 the Trouts purchased the other two lots from Clardy for \$250. When the new house was built in 1896 the old house was moved about two blocks west to the corner of 7th and Vine streets, where it still stands. The new house remained in the Trout family, passing to the George and Virginia's daughter Georgia Trout Funnell, until 1961 when it was sold to James and Edna Sullivan. It was sold to Errol and Mary Remsing in 1997 and then to the current owners, David and Susan Huddleston, in March 2005.

An 1896 newspaper article suggests the house was designed by George Farran, with the close participation of George and Virginia Trout, but no other references to Farran or his profession have been located to confirm this. More information is available about the builder, Francis M. Spencer of Topeka. Spencer was born in Ohio in 1856, and he attended local schools there before apprenticing to the carpentry trade. He came to Topeka in 1883. He worked in the carpentry trade as a journeyman until 1888 and then went into business as a contractor. In later years his son (Earl M.) joined him and the business became F. M. Spencer and Son. The Spencers were responsible for many construction projects in Topeka including the Atchison, Topeka & Santa Fe Motive Power Building (NRHP), the old governor's mansion at 8th and Buchanan streets (demolished), Curtis Junior High School (NRHP), and the Alf Landon House in Prospect Hills among many others. Spencer lived with his family at 1352 SW Garfield in Topeka until settling at the Wichita Masonic Home in his later life. He died there in 1949 at the age of 93.⁷

Architecture

The Queen Anne style dominated Kansas residential architecture during the last two decades of the 19th century. Character-defining features of the style include an asymmetrical arrangement with multiple roof planes, large turrets, wrap-around porches, large decorated gables, and bay windows. The majority of Queen Anne houses in Kansas were built of wood with a balloon frame. Applied ornament, such as fish scale shingles and spindlework, is commonly found on Queen Anne residences. Later-built Queen Anne residences (after 1890) often featureless spindlework in favor of classical details, such as cornice-line dentils, Palladian windows, and grouped porch columns. This transitional style – known as Queen Anne Free Classic – evolved into the Colonial Revival style.⁸

The Trout House is an example of the later Queen Anne Free Classic style. It clearly reflects the Queen Anne style in its irregular form, asymmetrical arrangement, multiple roof planes, three-story rounded tower with a conical roof, and wood materials. It includes a combination of lap siding and fish scale shingles. Its porches and gables lack the delicate spindlework of earlier Queen Anne houses, and instead include classical columns grouped in threes supporting the front porch. It appears no expense was spared on the interior, which still retains the unusually ornate radiators, a still-working call-box system, a central vacuum, four ornate and unique fireplaces, a 1,000 gallon water tank on the third floor with fire hoses, and an impressive display of woodwork throughout the first and second floors.

Upon the completion of the residence, an article was printed in the local newspaper about the house:

In looking over the new residence, and conversing with the builder, Mr. F.M. Spencer, of Topeka, we were amazed at the substantial and commodious proportions of the building as well as its beauty, novelty, and admirable appointments. The design is a combination of the Swiss and East Lake styles of architecture with plans original with Mr. and Mrs. Trout and George Farran. We believe its more novel exterior effects were first realized by the late Mr. Farran, amended by Mr. Trout, and further amended by Mrs. Trout; while for the interior arrangements, we believe

⁷ William E. Connelley, *A Standard History of Kansas and Kansans, Volume IV first edition*, (Lewis: New York, 1918), 1756.

⁸ Martha Hagedorn-Krass, "The Queen Anne: The Queen of the Late-nineteenth and Early-twentieth Century Style, in *Kansas Preservation*, vol. 25, no. 5 (September/October 2004): 13-16; Virginia and Lee McAlester, *A Field Guide to American Houses* (New York: Alfred A. Knopf, 2002), 262-268.

Trout, George & Virginia, House

Pottawatomie County, Kansas

Name of Property

County and State

Mrs. Trout is almost wholly responsible; subject, of course, to her husband's practical suggestions, the whole made to conform to feasible working plans by the genius of the architect.⁹

Summary

The George and Virginia Trout House is nominated to the National Register of Historic Places for its local significance in the area of architecture. Completed in 1896, it is an excellent example of the Queen Anne Free Classic style, and reflects the successful career of the owner, a banker and owner of a dry goods and lumber business. The residence has long been a landmark in Wamego, situated on a hill just one block west of the downtown.

⁹ Inez Owens, *Welcome to Wamego, Kansas 1876-1976: The American Bicentennial Year 1776-1976* (Wamego, KS: Owens, 1977), 89. Owens quotes an 1896 local newspaper article.

Trout, George & Virginia, House
Name of Property

Pottawatomie County, Kansas
County and State

9. Major Bibliographical References

Bibliography (Cite the books, articles, and other sources used in preparing this form.)

Connelley, William E. *A Standard History of Kansas and Kansans, Volume IV first edition.* New York: Lewis Publishing Co., 1918.

Cutler, William. *A History of the State of Kansas.* Chicago: Andreas Publishing Co., 1883.

Hagedorn-Krass, Martha. "The Queen Anne: The Queen of the Late-nineteenth and Early-twentieth Century Style. In *Kansas Preservation*, vol. 25, no. 5 (September/October 2004): 13-16.

Lynn, Catherine. *Wallpaper in America From the Seventeenth Century to World War I.* New York: W. W. Norton, 1980.

McAlester, Virginia and Lee. *A Field Guide to American Houses.* New York: Alfred A. Knopf, 2002.

Owens, Inez Roberts. *Welcome to Wamego Kansas 1866-1976: The American Bicentennial Year 1776-1976.* Wamego, KS: Owens, 1977.

Sanborn Fire Insurance Maps. 1896, 1905, and 1940.

Previous documentation on file (NPS):

- preliminary determination of individual listing (36 CFR 67 has been requested)
- previously listed in the National Register
- previously determined eligible by the National Register
- designated a National Historic Landmark
- recorded by Historic American Buildings Survey # _____
- recorded by Historic American Engineering Record # _____
- recorded by Historic American Landscape Survey # _____

Primary location of additional data:

- State Historic Preservation Office
- Other State agency
- Federal agency
- Local government
- University
- Other

Name of repository: Kansas Historical Society

Historic Resources Survey Number (if assigned): N/A

10. Geographical Data

Acreeage of Property 0.5 acres

Provide latitude/longitude coordinates OR UTM coordinates.
(Place additional coordinates on a continuation page.)

Latitude/Longitude Coordinates

Datum if other than WGS84: _____
(enter coordinates to 6 decimal places)

1 39.204408 -96.306840 3 _____
Latitude: Longitude: Latitude: Longitude:

2 _____ 4 _____
Latitude: Longitude: Latitude: Longitude:

Verbal Boundary Description (describe the boundaries of the property)

Trout, George & Virginia, House
Name of Property

Pottawatomie County, Kansas
County and State

The house is situated on three lots described as follows: WAMEGO ORIGINAL , ACRES 0.5 , Lot Block Info 440 441 442 SECTION 04 TOWNSHIP 10 RANGE 10.

Boundary Justification (explain why the boundaries were selected)

The boundary described above includes the lots historically associated with the 1896 Trout house.

11. Form Prepared By

name/title Susan Huddleston and David Sauer
organization _____ date _____
street & number 615 Elm Street telephone _____
city or town Wamego state KS zip code 66547
e-mail smhudd@wamego.net

Property Owner: (complete this item at the request of the SHPO or FPO)

name David and Susan Huddleston
street & number 615 Elm Street telephone _____
city or town Wamego state KS zip code 66547

Paperwork Reduction Act Statement: This information is being collected for applications to the National Register of Historic Places to nominate properties for listing or determine eligibility for listing, to list properties, and to amend existing listings. Response to this request is required to obtain a benefit in accordance with the National Historic Preservation Act, as amended (16 U.S.C.460 et seq.).

Estimated Burden Statement: Public reporting burden for this form is estimated to average 100 hours per response including time for reviewing instructions, gathering and maintaining data, and completing and reviewing the form. Direct comments regarding this burden estimate or any aspect of this form to the Office of Planning and Performance Management, U.S. Dept. of the Interior, 1849 C. Street, NW, Washington, DC.

Additional Documentation

Submit the following items with the completed form:

Photographs

Submit clear and descriptive photographs. The size of each digital image must be 1600x1200 pixels (minimum), at 300 ppi (pixels per inch) or larger. Key all photographs to a sketch map or aerial map. Each photograph must be numbered and that number must correspond to the photograph number on the photo log. For simplicity, the name of the photographer, photo date, etc. may be listed once on the photograph log and doesn't need to be labeled on every photograph.

Photograph Log

Name of Property: Trout, George & Virginia, House
City or Vicinity: Wamego
County: Pottawatomie State: Kansas
Photographer: Sarah Martin
Date
Photographed: July 12, 2013

Trout, George & Virginia, House

Pottawatomie County, Kansas

Name of Property

County and State

Description of Photograph(s) and number, include description of view indicating direction of camera:

- 1 of 14: East (front) elevation, camera facing W
- 2 of 14: Tower at northeast corner, camera facing SW
- 3 of 14: North (side) elevation, camera facing SSE
- 4 of 14: West (rear) and south (side) elevations, camera facing NE
- 5 of 14: South (side) elevation, camera facing N
- 6 of 14: Detail of window on south elevation
- 7 of 14: Front porch, camera facing NNW
- 8 of 14: Outbuilding along alleyway, camera facing SSE
- 9 of 14: Interior, central reception hall
- 10 of 14: Interior, main staircase at first floor
- 11 of 14: Interior, ladies parlor
- 12 of 14: Interior, built-in cabinet along west wall of dining room
- 13 of 14: Interior, service call box
- 14 of 14: Interior, sink basin in one of the second-floor bedrooms

Figures

Include GIS maps, figures, scanned images below.

Trout, George & Virginia, House
Name of Property

Pottawatomie County, Kansas
County and State

Figure 1: Sanborn Fire Insurance Map, Wamego, Kansas: 1896, sheet 1.

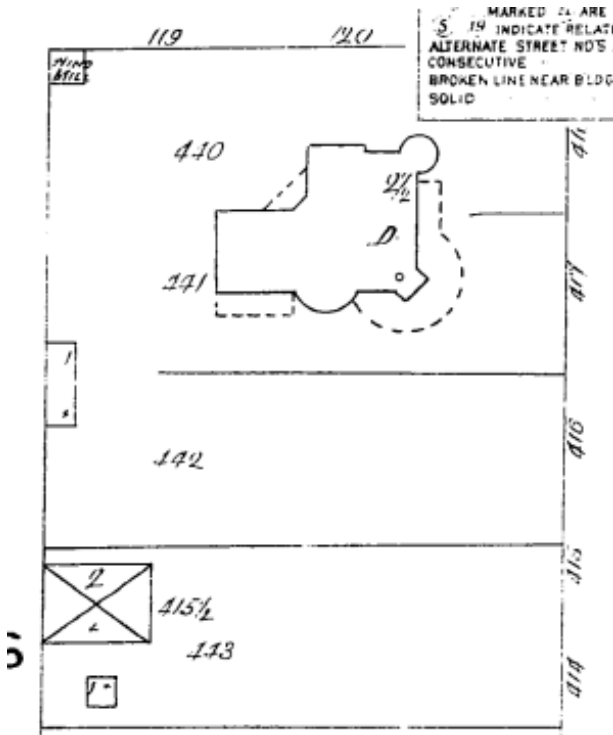
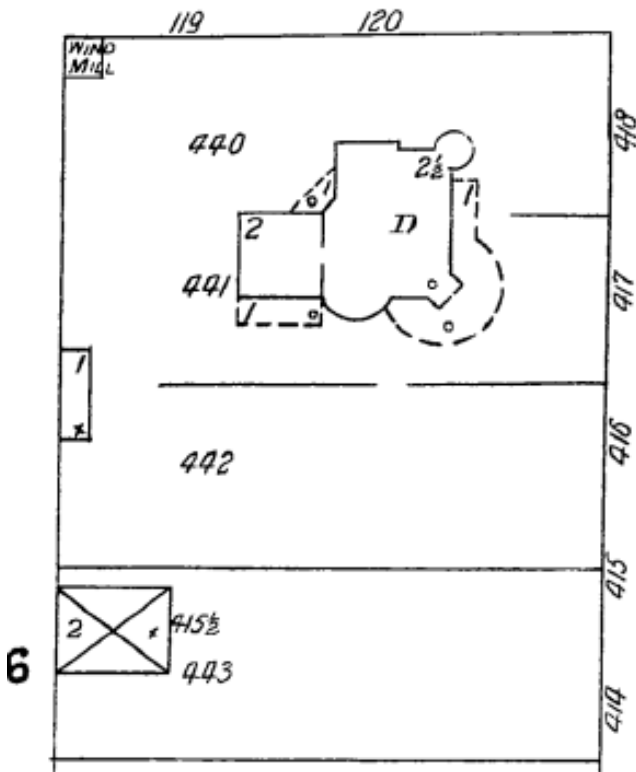


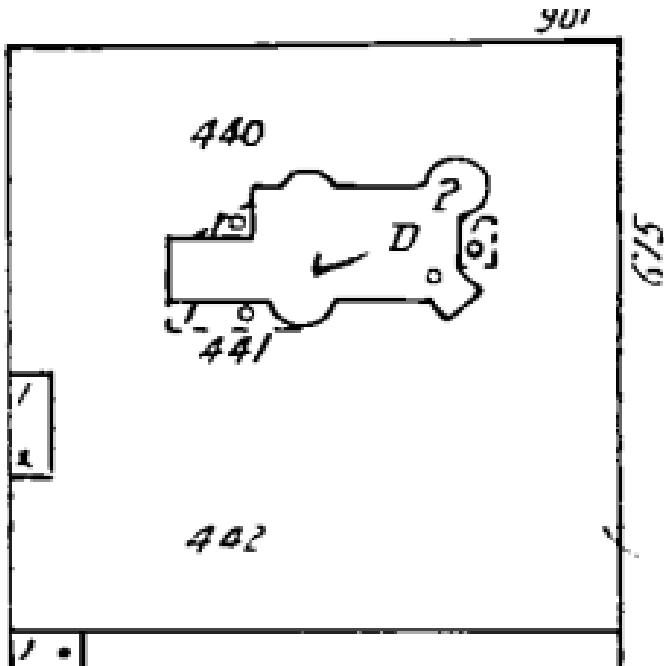
Figure 2: Sanborn Fire Insurance Map, Wamego, Kansas: 1905, sheet 1.



Trout, George & Virginia, House
Name of Property

Pottawatomie County, Kansas
County and State

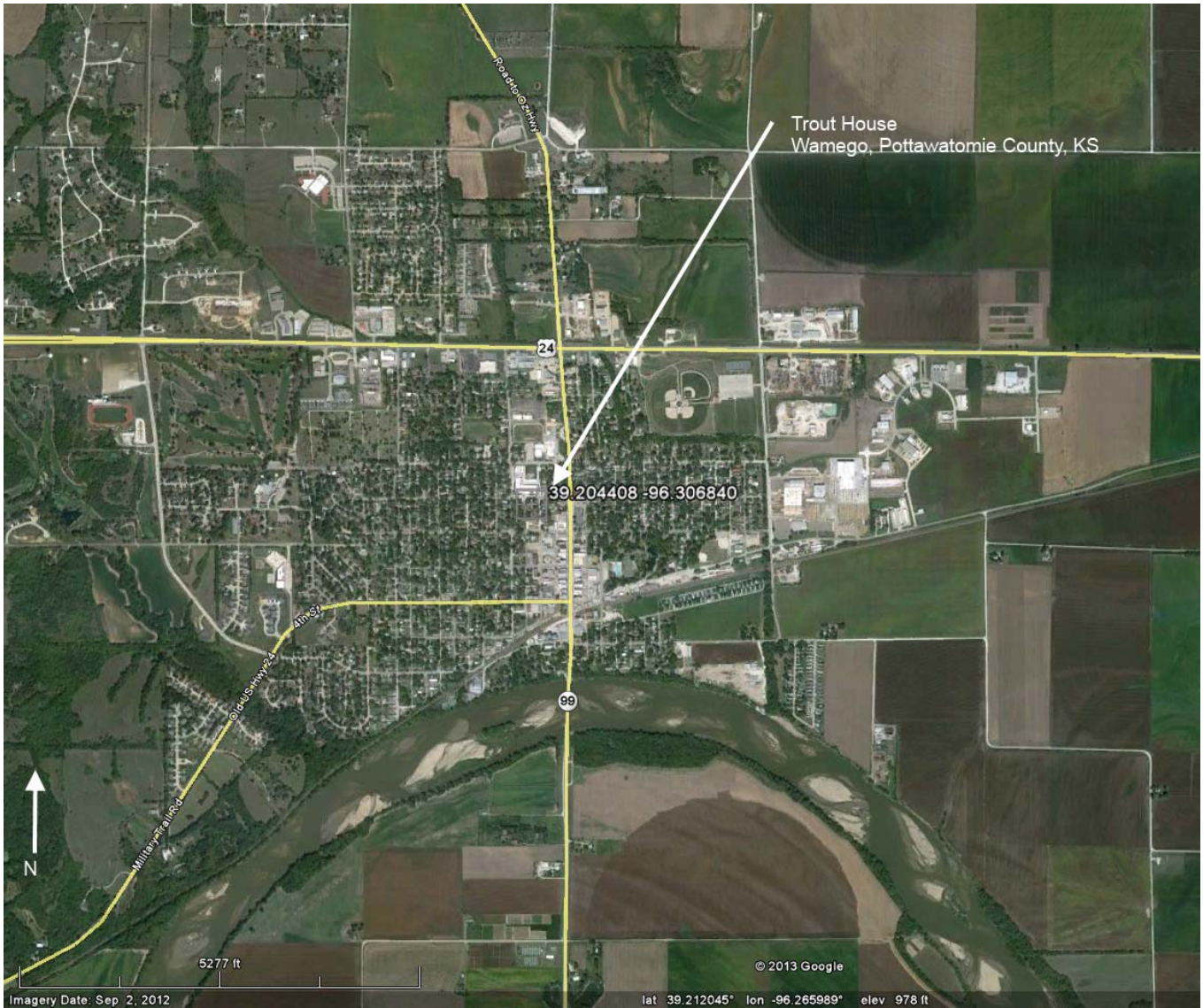
Figure 3: Sanborn Fire Insurance Map, Wamego, Kansas: 1941, sheet 3.



Trout, George & Virginia, House
Name of Property

Pottawatomie County, Kansas
County and State

Figure 4: Contextual Aerial Image. Google Earth.



Trout, George & Virginia, House
Name of Property

Pottawatomie County, Kansas
County and State

Figure 5





615













615













FRONT DOOR.

DINING ROOM.

UPPER BATH.

LOWER BATH.

WHITE ROOM.

RED ROOM.

Overton & Lee
Topeka Kansas.



UNITED STATES DEPARTMENT OF THE INTERIOR
NATIONAL PARK SERVICE

NATIONAL REGISTER OF HISTORIC PLACES
EVALUATION/RETURN SHEET

REQUESTED ACTION: NOMINATION

PROPERTY NAME: Trout, George and Virginia, House

MULTIPLE NAME:

STATE & COUNTY: KANSAS, Pottawatomie

DATE RECEIVED: 11/22/13 DATE OF PENDING LIST: 12/24/13
DATE OF 16TH DAY: 1/08/14 DATE OF 45TH DAY: 1/08/14
DATE OF WEEKLY LIST:

REFERENCE NUMBER: 13001043

REASONS FOR REVIEW:

APPEAL: N DATA PROBLEM: N LANDSCAPE: N LESS THAN 50 YEARS: N
OTHER: N PDIL: N PERIOD: N PROGRAM UNAPPROVED: N
REQUEST: N SAMPLE: N SLR DRAFT: N NATIONAL: N

COMMENT WAIVER: N

ACCEPT RETURN REJECT 1-8-14 DATE

ABSTRACT/SUMMARY COMMENTS:

Entered in
The National Register
of
Historic Places

RECOM./CRITERIA _____

REVIEWER _____ DISCIPLINE _____

TELEPHONE _____ DATE _____

DOCUMENTATION see attached comments Y/N see attached SLR Y/N

If a nomination is returned to the nominating authority, the nomination is no longer under consideration by the NPS.

November 20, 2013

Carol Shull
National Register of Historic Places
National Park Service
1201 Eye Street, N. W.
8th Floor (MS 2280)
Washington, DC 20005



Dear Ms. Shull:

We are pleased to submit for your consideration the following National Register documents:

- **University of Kansas East Historic District – Douglas County** (new nomination)
 - Enclosed: Signed copy of nomination and 2 disks (with nomination, GIS, and photo files)
 - The enclosed disk #1 contains the true and correct copy of the nomination.

- **Clearfield School District #58 – Douglas County** (new nomination)
 - Enclosed: Signed copy of nomination and 2 disks (with nomination, GIS, and photo files)
 - The enclosed disk #1 contains the true and correct copy of the nomination.

- **Upper Wakarusa River Crossing – Douglas County** (new nomination)
 - Enclosed: Signed copy of nomination and 2 disks (with nomination, GIS, and photo files)
 - The enclosed disk #1 contains the true and correct copy of the nomination.

- **Cedar Manor Farm – Montgomery County** (new nomination)
 - Enclosed: Signed copy of nomination and 2 disks (with nomination, GIS, and photo files)
 - The enclosed disk #1 contains the true and correct copy of the nomination.

- **Bluemont Youth Cabin – Riley County** (new nomination)
 - Enclosed: Signed copy of nomination, USGS map, and 2 disks (with nomination, GIS, and photo files)
 - The enclosed disk #1 contains the true and correct copy of the nomination.

- **Ingraham, Jesse, House – Riley County** (new nomination)
 - Enclosed: Signed copy of nomination and 2 disks (with nomination, GIS, and photo files)

- The enclosed disk #1 contains the true and correct copy of the nomination.
- **Trout, George & Virginia, House – Pottawatomie County (new nomination)**
 - Enclosed: Signed copy of nomination and 2 disks (with nomination, GIS, and photo files)
 - The enclosed disk #1 contains the true and correct copy of the nomination.
- **City Square Park Bandstand – Allen County (new nomination)**
 - Enclosed: Signed copy of nomination and 2 disks (with nomination, GIS, and photo files)
 - The enclosed disk #1 contains the true and correct copy of the nomination.
- **Simmons Funeral Home – Wyandotte County (new nomination)**
 - Enclosed: Signed copy of nomination and 2 disks (with nomination, GIS, and photo files)
 - The enclosed disk #1 contains the true and correct copy of the nomination.
- **Oregon and California Trail – Pacha Ruts – Marshall County (new nomination)**
 - Enclosed: Signed copy of nomination and 2 disks (with nomination, GIS, and photo files)
 - The enclosed disk #1 contains the true and correct copy of the nomination.
- **Lake of the Forest – Wyandotte County (boundary increase)**
 - Enclosed: Signed copy of amendment and 2 disks (with amendment, GIS, and photo files)
 - The enclosed disk #1 contains the true and correct copy of the amendment.
- **Doney-Clark House – Kingman County (request for removal)**
 - Enclosed: Signed copy of request for removal
- **Clear Creek Trail Segment – Nemaha County (request for DOE)**
 - Enclosed: Signed copy of nomination and 2 disks (with notarized owner objection, nomination, GIS, and photo files)
 - The enclosed disk #1 contains the true and correct copy of the nomination.

Please do not hesitate to contact me if you have any questions. I may be reached at 785-272-8681 ext. 216 or smartin@kshs.org.

Sincerely yours,



Sarah J. Martin
National Register Coordinator

Enclosures