



Charles L. Schuster House

1 of 15

Corvallis, Oregon *BRANTON COUNTY*

Photographer: Jerry Bryant

1985

228 NW 28TH ST.

Negative: Sharon Bolden, Corvallis, OR

East Elevation, Front of House

97330



Charles L. Schuster House

2 of 15

Corvallis, Oregon, *BANTON COUNTY*

Photographer: Jerry Bryant

1985

228 NW 28th ST.

Negative: Sharon Bolden, Corvallis, *OR*

Upper Story North Elevation (side) *97330*
is shown.



Charles L. Schuster House

3 of 15

Corvallis, Oregon, *BANTON COUNTY*

Photographer: Jerry Bryant

1985

228 NW 28TH ST.

Negative: Sharon Bolden, Corvallis, OR

South Elevation (side), first and

97330

second stories



Charles L. Schuster House

4 of 15

Corvallis, Oregon *BANTON COUNTY*

Photographer: Jerry Bryant

1985

228 NW 28TH ST.

Negative: Sharon Bolden, Corvallis, *OR*

West Elevation (back), showing

97330

second floor subdued (non-gabled)

dormers



Charles L. Schuster House 5 of 15

Corvallis, Oregon *BANTON COUNTY*

Photographer: Jerry Bryant

1985

228 NW 28TH ST.

Negative; Sharon Bolden, Corvallis, *OR*

North Elevation (side), showing

97330

first and second stories



Charles L. Schuster House

6 of 15

Corvallis, Oregon, BENTON COUNTY

Photographer: Jerry Bryant

1985

428 NW 28th St.

Negative: Sharon Bolden, Corvallis, OR

South East Corner of Porch, showing 97330

detail and oriental influences



Charles L. Schuster House

7 of 15

Corvallis, Oregon, *BANTON COUNTY*

Photographer: Jerry Bryant

1985

228 NW 28TH ST.

Negative: Sharon Bolden, Corvallis, *OR*

North East Porch Column, taken from *97330*

Porch, showing detail work



Charles L. Schuster House

8 of 15

Corvallis, Oregon, BANTON COUNTY

Photographer: Jerry Bryant

1985

228 NW 28TH ST.,

Negative: Sharon Bolden, Corvallis, OR

East (front) Door, extra wide and

97330

welcoming, with beveled glass



Charles L. Schuster House

9 of 15

Corvallis, Oregon, *BANTON COUNTY*

Photographer: Jerry Bryant

1985

428 NW 28TH ST.,

Negative: Sharon Bolden, Corvallis *OR 97330*

Entry Hall, Hopper Window over Stairway
to second floor, axes from livingroom
through french doors to hopper window



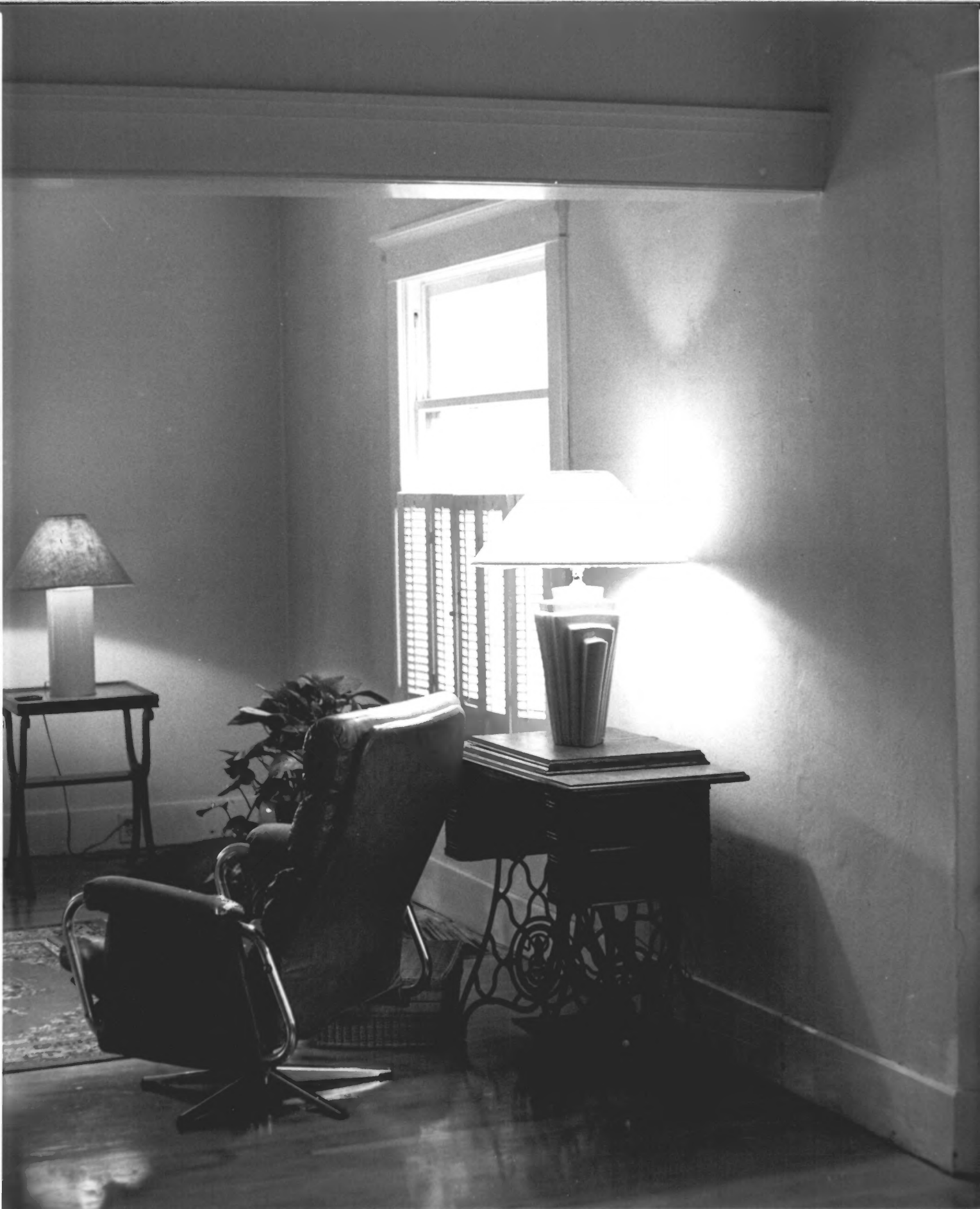
Charles L. Schuster House 10 of 15
Corvallis, Oregon, *BANTON COUNTY*

Photographer: Jerry Bryant

1985

Negative: Sharon Bolden, Corvallis, *OR*
928 NW 28TH ST.

View from West End of Dining Room *97330*
to Living Room, Showing East/West Axes
and dividing beam



Charles L. Schuster House

11 of 15

Corvallis, Oregon, *BANTON COUNTY*

Photographer: Jerry Bryant

1985

228 NW 28TH ST.

Negative: Sharon Bolden, Corvallis, *OR 97330*

View from West dining room, Showing Beam detail and Window Detail of South (side) of Living Room. The Detail for the opening between rooms may be added to be consistent with the Detail throughout the house.



Charles L. Schuster House

12 of 15

Corvallis, Oregon, *BANTON COUNTY*

Photographer: Jerry Bryant

1985

228 NW 28TH ST.

Negative: Sharon Bolden, Corvallis, *OR*

View from Living room through dining *97330*

room through West (back) den, showing
rationality, and west (back) window
detail



Charles L. Schuster House

13 of 15

Corvallis, Oregon, *BANTON COUNTY*

Photographer: Jerry Bryant

1985

228 NW 28TH ST.

Negative: Sharon Bolden, Corvallis OR

Bay Window detail, South side of

97330

dining room



Charles L. Schuster House 14 of 15
Corvallis, Oregon, BANTON COUNTY
Photographer: Jerry Bryant
1985 228 NW 28TH ST.
Negative: Sharon Bolden, Corvallis, OR
Northwest breakfast Nook detail 97330



Charles L. Schuster House

15 of 15

Corvallis, Oregon, *BANTON COUNTY*

Photographer: Jerry Bryant

1985

228 NW 28TH ST.,

Negative: Sharon Bolden, Corvallis, *OR*

Second Story, East Bedroom, looking

97330

South, into Dormer Closet, with Hopper

Window