

TENNESSEE MULTIPLE PROPERTY FORM

RECEIVED

Title: Historic Resources of Williamson County

MAR 03 1988

Historic Name: Bank of Nolensville (WM-1117)

Common Name: Williams Store

NATIONAL REGISTER

Classification: Building

Owner: Marie Williams, P.O. Box 2044, Nolensville, TN.

Location: On Highway 41A in the commercial section of Nolensville.

<u>Contributing:</u>		<u>Non-Contributing:</u>	
Buildings	1	Buildings	0
Structures	0	Structures	0
Sites	0	Sites	0
<u>Total:</u>	1	<u>Total:</u>	0

Description:

The Bank of Nolensville is a two-story brick vernacular commercial building constructed ca. 1905. The main entrance displays an original single light glass and frame door flanked by two original four-over-four sash display windows. Above the windows is two-course brick relief arching. The two upper story windows are also four-over-four sash but have been covered with frame panels. At the roofline is a corbelled brick cornice. The main facade of the building has stretcher bond brick construction while the side and rear facades were built in six-course common bond. The windows on the rear facade are arched but have been enclosed. A concrete block addition has been made to the rear facade.

The interior of the first story consists of a large open room with no partition walls. The original bank vault and other features from the bank's occupancy have been removed. The building faces Highway 41A in the commercial section of Nolensville.

Period of Significance: 1906-1932.

Area of Significance: Commerce

Criterion: A

Architect/Builder: Unknown

Statement of Significance:

The Bank of Nolensville is notable for its association with an important early 20th century commercial business in the community. Constructed ca. 1905, the building housed the Bank of Nolensville during its existence from 1906 until 1932. The bank was one of four rural banks opened in the county during the early 1900s. From 1900 until 1920 was a time of general prosperity for farmers in the county and the banks of Nolensville, College Grove, Leipers Fork and Thompson Station were all opened in these years. All four banks thrived until

the 1920s when the downturn in farm prices caused a drop in assets and with the Depression all were forced to close with the exception of the Bank of College Grove. These buildings reflect an important period in the rural commercial history of the county.

The Bank of Nolensville was organized in 1906 during a period of growth and prosperity in the community. The officers of the bank were Sherwood G. Jenkins, president, J.W. Williams, vice-president, and Walter Kimery, cashier. Directors of the bank included W.E. Stammer, W.J. Putnam and William Allen Hall. For the next two decades the bank's assets grew as Nolensville became a center for the county's dairy industry. With the Depression, however, the bank gradually lost its financial base and it closed on October 22, 1932 at great loss to its investors.

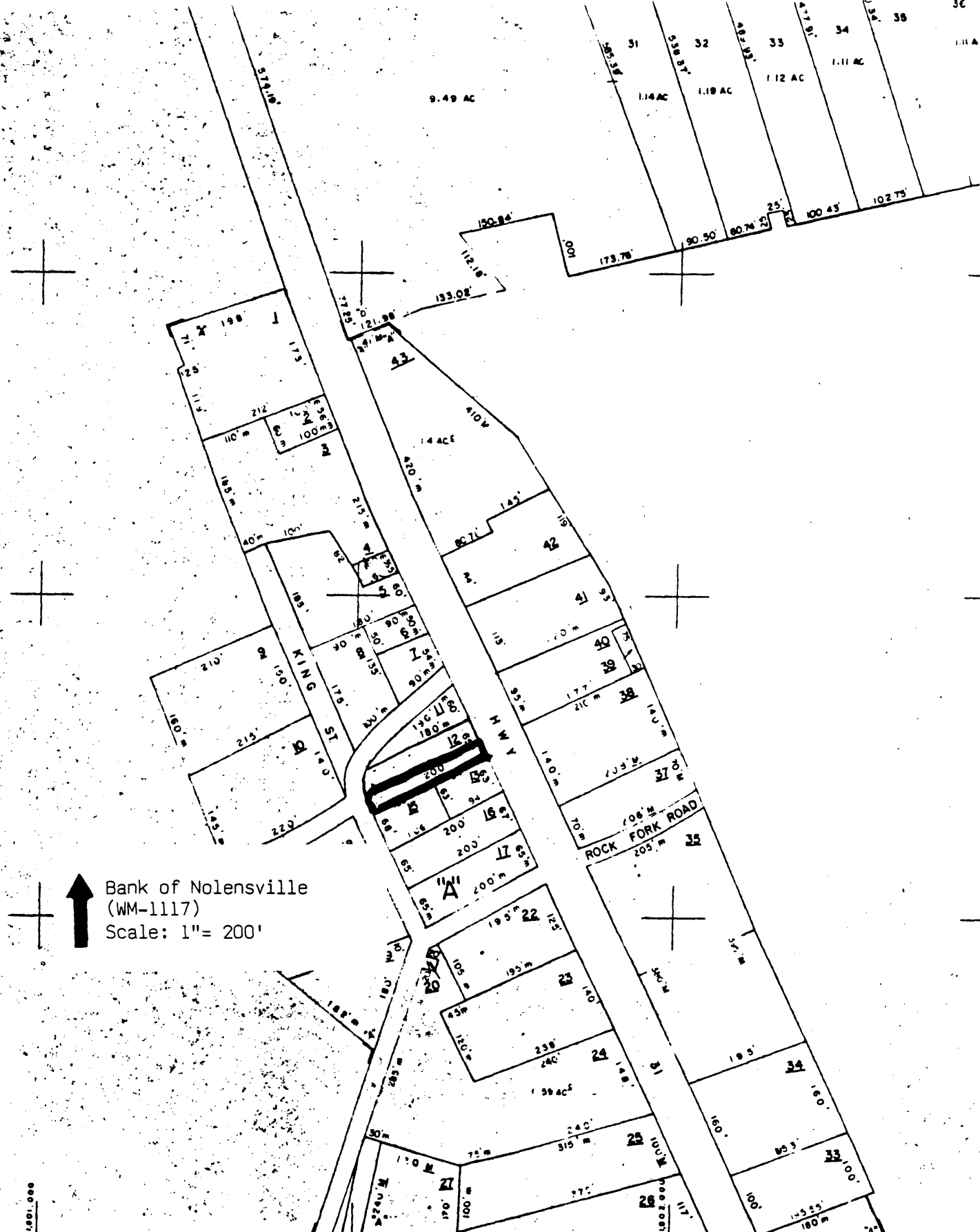
The bank was one of four to operate in the small towns in the county during the early 20th century and was the only bank to ever exist in Nolensville. It reflects an important period in the prosperity of the community and its commercial history. Despite alterations the building retains its original storefront and upper facade features. The building continues to be the most significant commercial structure in the community.

Acreage: Less than 1 acre

UTM References: Nolensville Quad/16/529 760/39785 80

Verbal Boundary and Justification: The boundary of the Bank of Nolensville is illustrated on accompanying Williamson County tax map # 56-M, lot 12. The boundary includes the legal boundary of the property and is sufficient to protect the historical setting of the site.

Supplemental Bibliographical References: "Financial Institutions of Williamson County", Bowman.

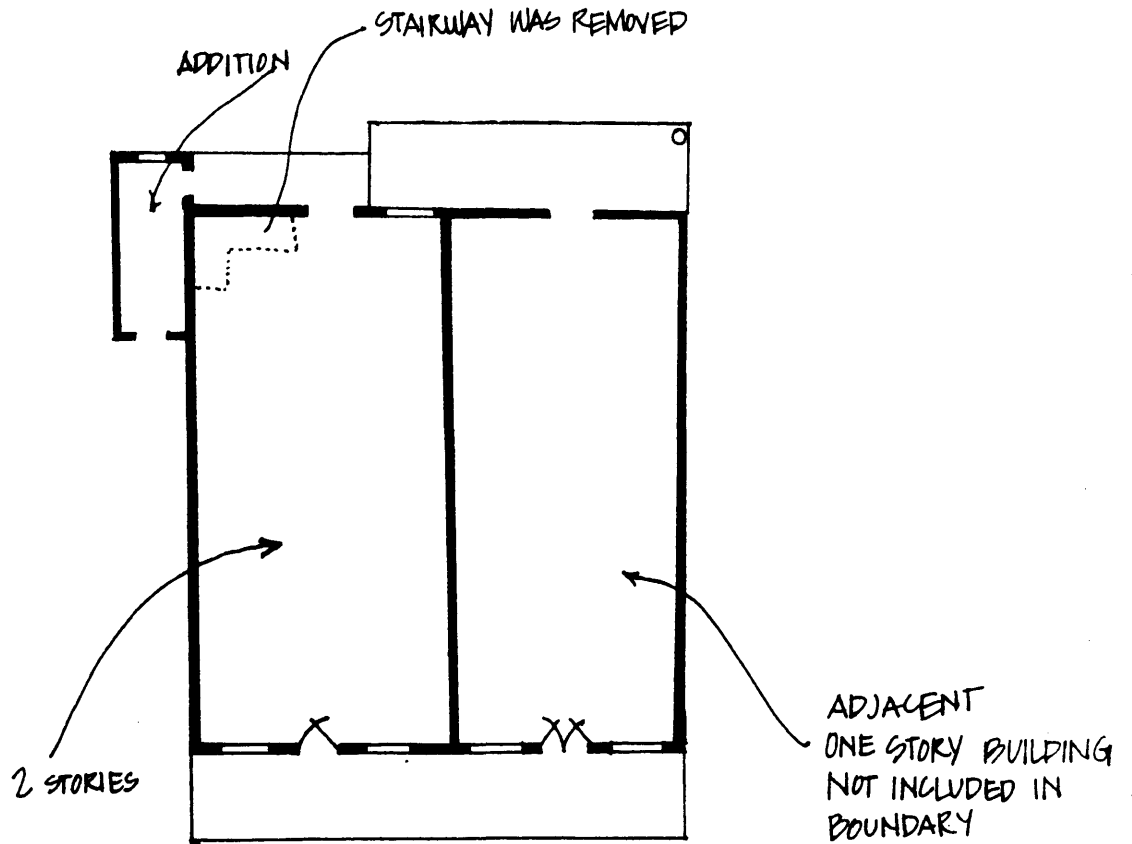


Bank of Nolensville
(WM-1117)
Scale: 1" = 200'

STATE OF TENNESSEE
CONTROLLER OF THE TREASURY
DIVISION OF PROPERTY ASSESSMENTS

- | | | |
|--|---|--|
| <ul style="list-style-type: none"> 1 PARCEL NUMBER 2 PARCEL MODE 3 DISTRICT LINE 4 SUBD LOT # 5 PARCEL OUTLINE 6 AC CALCULATED ACREAGE | <ul style="list-style-type: none"> 7 (S) PARCEL & CONTROLLING MAP # 8 FENCE IMPROVEMENT 9 CEMETERY 10 CHURCH 11 SCHOOL 12 WOODS AREA 13 POND | <ul style="list-style-type: none"> 14 CREEK 15 STATE LINE 16 CO. LINE 17 CORP. LIMITS 18 TRANSMISSION LINE 19 ROAD 20 RAILROAD 21 RIDGE LINE |
|--|---|--|

* 1117 BANK OF NOLENSVILLE



NOLENSVILLE ROAD

N →

* NOT TO SCALE