



1. D.H. Day Store--Garage (HS 25-121C) view from the southwest

Glen Haven Village Historic District
Glen Haven, Michigan

Phots. Tom Hensley/Jill York, National Park Service
Negs. Midwest Regional Office

September 1981

1/31/83



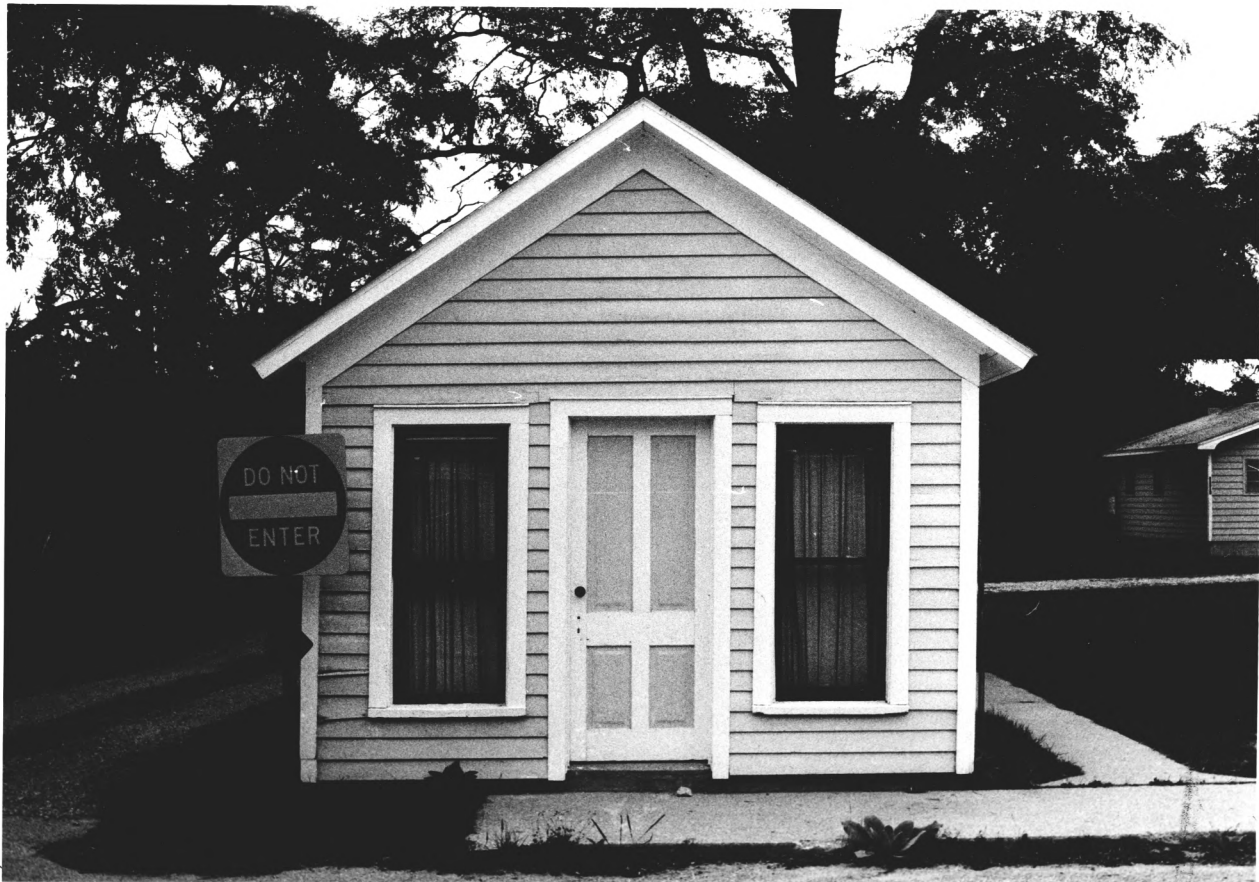
12. Dean House (HS 25-115) view from the east

Glen Haven Village Historic District
Glen Haven, Michigan

Phot. Ron Cockrell, National Park Service
Negs. Midwest Regional Office

June 1982

1/21/83



2. D.H. Day Store--Storehouse (HS 25-121B) view from
the west

Glen Haven Village Historic District
Glen Haven, Michigan

Phots. Tom Hensley/Jill York, National Park Service
Negs. Midwest Regional Office

September 1981

1/3/13



3. D.H. Day Store (HS 25-121A) view from the west

Glen Haven Village Historic District
Glen Haven, Michigan

Phots. Tom Hensley/Jill York, National Park Service
Negs. Midwest Regional Office

September 1981

1/3/83



1-2-3. D.H. Day Store complex (HS 25-121A,B,C) view
from the southwest

Glen Haven Village Historic District
Glen Haven, Michigan

Phots. Tom Hensley/Jill York, National Park Service
Negs. Midwest Regional Office

September 1981

1/3/82



4. Glen Haven Signal Tower (HS 25-121E) view from the west

Glen Haven Village Historic District
Glen Haven, Michigan

Phots. Tom Hensley/Jill York, National Park Service
Negs. Midwest Regional Office

September 1981

1/31/83



5. William Day House (HS 25-118) view from the southwest

Glen Haven Village Historic District
Glen Haven, Michigan

Phots. Tom Hensley/Jill York, National Park Service
Negs. Midwest Regional Office

September 1981

1/3/83



5. William Day House (HS 25-118) view from the west

Glen Haven Village Historic District
Glen Haven, Michigan

Phots. Tom Hensley/Jill York, National Park Service
Negs. Midwest Regional Office

September 1981

1/31/43



6. Warnes Blacksmith Shop (HS 25-121D) view from the northwest

Glen Haven Village Historic District
Glen Haven, Michigan

Phots. Tom Hensley/Jill York, National Park Service
Negs. Midwest Regional Office

September 1981

1/31/87



8. Bumgardner House (HS 25-122) view from the west

Glen Haven Village Historic District
Glen Haven, Michigan

Phots. Tom Hensley/Jill York, National Park Service
Negs. Midwest Regional Office

September 1981

1/3/83



9. Wickland House (HS 25-108) view from the east

Glen Haven Village Historic District
Glen Haven, Michigan

Phot. Ron Cockrell, National Park Service
Negs. Midwest Regional Office

June 1982

1/3/82



10 & 11. Rude House (HS 25-107) and Rude Garage
(HS 25-107A) view from the east

Glen Haven Village Historic District
Glen Haven, Michigan

Phot. Ron Cockrell, National Park Service
Negs. Midwest Regional Office

June 1982

11/2/82



14 & 13. Sleeping Bear Inn (HS 25-106A) and Garage
(HS 25-106B) view from the northeast

Glen Haven Village Historic District
Glen Haven, Michigan

Phots. Tom Hensley/Jill York, National Park Service
Negs. Midwest Regional Office

September 1981

1/31/83



14. Sleeping Bear Inn (HS 25-106A) view from the southeast

Glen Haven Village Historic District
Glen Haven, Michigan

Phots. Tom Hensley/Jill York, National Park Service
Negs. Midwest Regional Office

September 1981

1/31/88



15. Canning Factory (HS 19-153A) view from the southwest

Glen Haven Village Historic District
Glen Haven, Michigan

Phots. Tom Hensley/Jill York, National Park Service
Negs. Midwest Regional Office

September 1981

1/31/83



15. Canning Factory (HS 19-153A) view from the north

Glen Haven Village Historic District
Glen Haven, Michigan

Phots. Tom Hensley/Jill York, National Park Service
Negs. Midwest Regional Office

September 1981

1/2/83



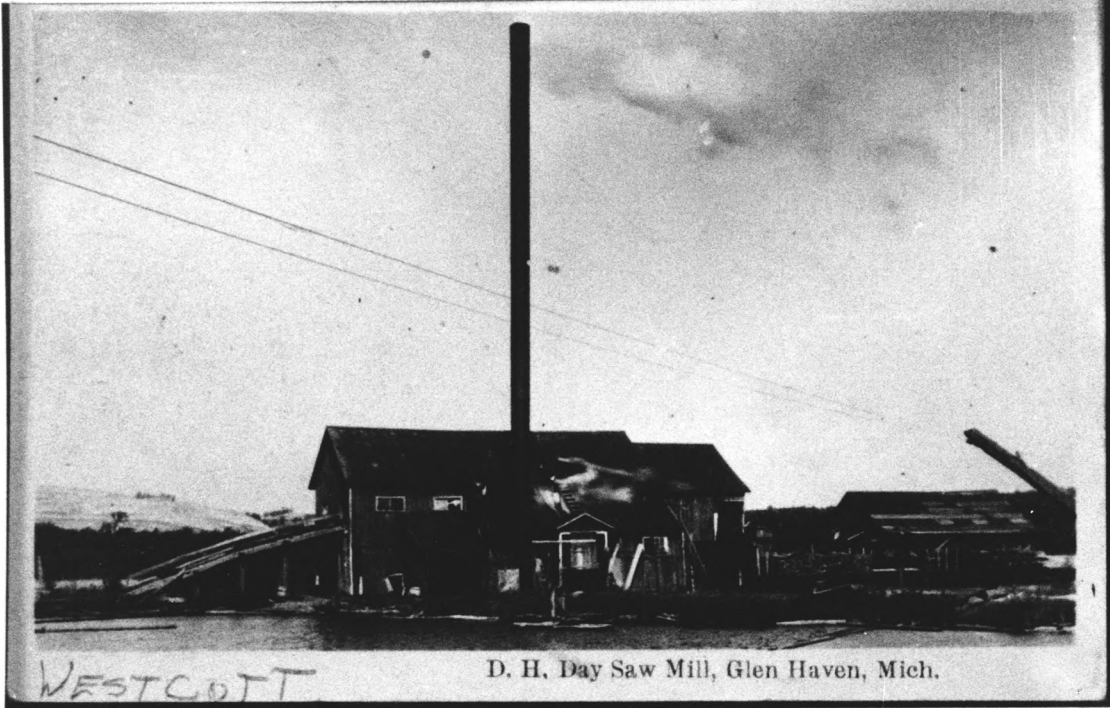
16. D.H. Day Narrow Gauge Railroad Grade (HS 19-174)

Glen Haven Village Historic District
Glen Haven, Michigan

Phot. Unknown
Neg. Sleeping Bear Dunes National Lakeshore,
Frankfort, Michigan

1906

1/31/89



D. H. Day Saw Mill, Glen Haven, Mich.

17. D.H. Day Sawmill Site--view from the east

Glen Haven Village Historic District
Glen Haven, Michigan

Phot. "Westcott"

Original Photo: Leelanau County Historical Museum,
Leeland, Michigan

ca. 1900

1/2/00



18. Southern district boundary; Main Street (M-209)
looking north

Glen Haven Village Historic District
Glen Haven, Michigan

Phots. Tom Hensley/Jill York, National Park Service
Negs. Midwest Regional Office

September 1981

1/31/89



19. Main Street (M-209) looking north

Glen Haven Village Historic District
Glen Haven, Michigan

Phots. Tom Hensley/Jill York, National Park Service
Negs. Midwest Regional Office

September 1981

1/3/83



20. North terminus of Main Street (M-209) looking north

Glen Haven Village Historic District
Glen Haven, Michigan

Phots. Tom Hensley/Jill York, National Park Service
Negs. Midwest Regional Office

September 1981

11/31/83



21. North terminus of Main Street (M-209) looking
south

Glen Haven Village Historic District
Glen Haven, Michigan

Phots. Tom Hensley/Jill York, National Park Service
Negs. Midwest Regional Office

September 1981

1/2/82



22-3. D.H. Day Sawmill Site looking west

Glen Haven Village Historic District
Glen Haven, Michigan

Phot. Charles Parkinson, National Park Service
Negs. Sleeping Bear Dunes National Lakeshore,
Superintendent's Office, Frankfort, Michigan

October 1982

1/31/82