



ONE
WAY
→

Harrison Court Apts. 1

Portland Methmanah Co. OK



Harrison Court Apts. 2

Portland Multnomah Co OR



Harrison Court Apts.

3

Portland Muhammad Co OR



Harrison Court Apts.

4

Portland Multnomah Co OK



← EXIT





Harrison Court Apts.

Portland Multnomah Co OR

6



Harrison Court Apts. ?

Portland Multnomah Co OR



Harrison Court Apts 8
Portland Multnomah Co OR



Harrison Court Apts

9

Portland Multnomah Co

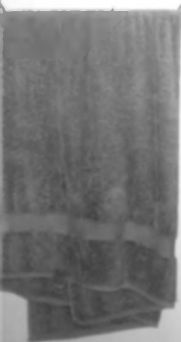
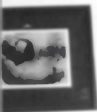
A black and white photograph of a hallway. In the center is a dark, paneled door with a small handle on the right side. Above the door is a rectangular sign with a white background, featuring a black arrow pointing left and the word "EXIT" in bold, black, sans-serif capital letters. The hallway has a light-colored wall and a dark baseboard. A white pipe runs along the ceiling and down the right wall. The floor is covered in a light-colored carpet. The lighting is somewhat dim, with a bright area on the left side of the door.

← EXIT

Harrison Court Apts.

10

Portland Muttmanah Co OR



Watson Court Apts.

Portland Multnomah Co OR



Harrison Court Apts. 12

Portland Multnomah Co OR