



1. Camp Date Creek  
ruin of post's hospital
2. Yavapai County, Arizona
3. Patrick H. Bole's
4. April 8, 1991
5. AZ State Land Dept., Prescott District office
6. Looking SW from NE corner of building
7. Photo No. 1



1. Camp Date Creek  
post's hospital
2. Yavapai County, Arizona
3. Patrick H. Boles
4. April 8, 1991
5. AZ State Land Dept., Prescott District office
6. NE corner of post hospital exposed by  
illegal digging. View is looking SW
7. Photo No. 2



1. Camp Date Creek  
laundress quarters
2. Yavapai County, Ariza
3. Patrick. H. Boles
4. April 8, 1991
5. AZ State Land Dept, Prescott District office
6. Looking west at laundress quarters in  
the upper NE corner of camp; shows  
as proposed building on 1871 map
7. Photo No. 3



1. Camp Nate Creek  
Laundress quarters
2. Yavapai County, Arizona
3. Patrick H. Boles
4. April 8, 1991
5. AZ State Land Dept, Prescott District office
6. Looking NW at laundress quarters in upper NE corner of the Camp; shown as proposed building on 1871 map
7. Photo No. 4





1. Camp Date Creek
2. Yavapai County, Arizona
3. Patrick H. Boles
4. April 8, 1991
5. AZ State Land Dept., Prescott District Office
6. View looking east, from building "k" at the NW corner of the parade ground, across mounds of Company storehouse and Company quarters
7. Photo No. 5



1. Camp Date Creek  
La Paz Road
2. Yavapai County, Arizona
3. Patrick H. Boles
4. April 8, 1991
5. Arizona: State Land Dept., Prescott District office
6. La Paz Road, looking east towards Weaver Mountains. Mounds of company quarters and company storehouse to right (south) of road
7. Photo No. 6



1. Camp Date Creek
2. Commanding Officers quarters
2. Yavapai County, Arizona
3. Patrick H. Boles
4. April 8, 1991
5. AZ State Land Dept., Prescott District office
6. View is north (standing on mound of officers quarters) looking at Commanding officer's quarters at SW corner of Parade ground
7. Photo No. 7



1. Camp Date Creek  
Hospital
2. Yavapai County, Arizona.
3. Patrick H. Bales
4. April 8, 1992
5. RE State Land Dept., Prescott District office
6. Looking west at post's hospital
7. Photo. No. 8

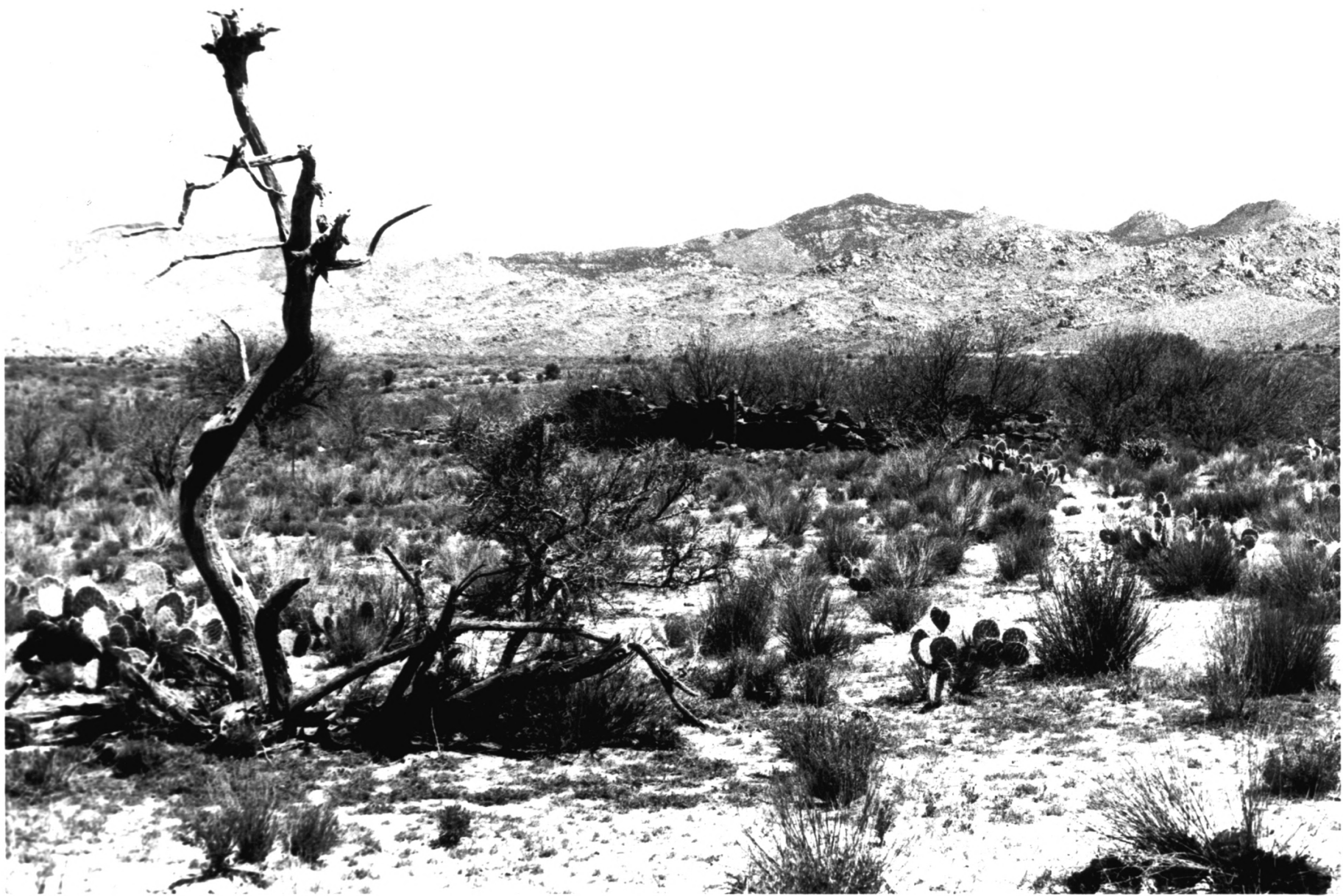




1. Camp Date Creek  
Blacksmith's Shop
2. Yavapai County, Arizona
3. Patrick H. Roles
4. April 8, 1995
5. AZ State Land Dept., Prescott District Office
6. Looking south at the Blacksmith Shop  
(shown as a proposed building SE of the QM  
building on the 1871 map)
7. Photo No. 9



1. Camp Date Creek  
prehistoric artifacts
- 2- Yavapai County, Arizona
- 3- Patrick H-Boles
- 4- April 8, 1991
- 5- AZ State Land Dept., Prescott District office
6. Metate in wash upstream from the  
QM building. Prehistoric cultural artifacts  
are common on the grounds of the camp
7. Photo No. 10



1. Camp Date Creek  
Quartermasters building
2. Yavapai County, Arizona
3. Patrick H. Boles
4. April 8, 1991
5. AZ State Land Department, Prescott District office
6. Looking east towards Quartermasters building -  
Weaver Mtns in background
7. Photo No. 11



1. Camp Date Creek  
Quartermasters building
2. Yavapai County, Arizona
3. Patrick A. Boles
4. April 8, 1991
5. AZ State Land Dept., Prescott District office
6. At NE end of Quartermasters building  
looking SE. Date Creek Mtns in  
background
7. Photo No. 12





1. Camp Date Creek

Quartermaster's building

2. Yavapai County, Arizona

3. Patrick K. Boles

4. April 8, 1901

5. Prescott District office, AZ State had left

6. At North end of Quartermaster's building  
Looking South. Date Creek Mts in background

7. Photo No. 13



1. Camp Date Creek  
Quartermasters building
2. Yavapai County, Arizona
3. Patrick H. Boles
4. April 20, 1997
5. AZ State Land Dept, Prescott District office
6. East wall of Quartermasters building, view is to west. Note barrel rings in foreground
7. Photo Nov 14



1. Camp Date Creek  
Quartermasters building
2. Yavapai County, Arizona
3. Patrick H. Boles
4. April 8, 1991
5. AZ State Land Dept., Prescott District office
6. Looking north down the east wall of the  
Quartermasters building
7. Photo No. 15