





Congregational Church and Boulevard,  
3593  
Ashland, Oreg.





NOTE B DULWARD AVE, ASHLAND ORE ON THE ROAD OF A THOUSAND WONDERS







A.S.P.T.  
Entering Ashland, Ore.









BRUBAKER  
6379



















30



44

















92











85







83

62-119











44



























641







SAFEWAY



Stratford Inn

1127  
1128







Out of the Blue















899















83





















198

























































REAL CLEAN  
WINDOWS  
BLINDS  
GUTTERS  
Pressure Washing  
800-5046 • 734-8286



ALP  
YORK  
PA  
EST. 1988





298

77



















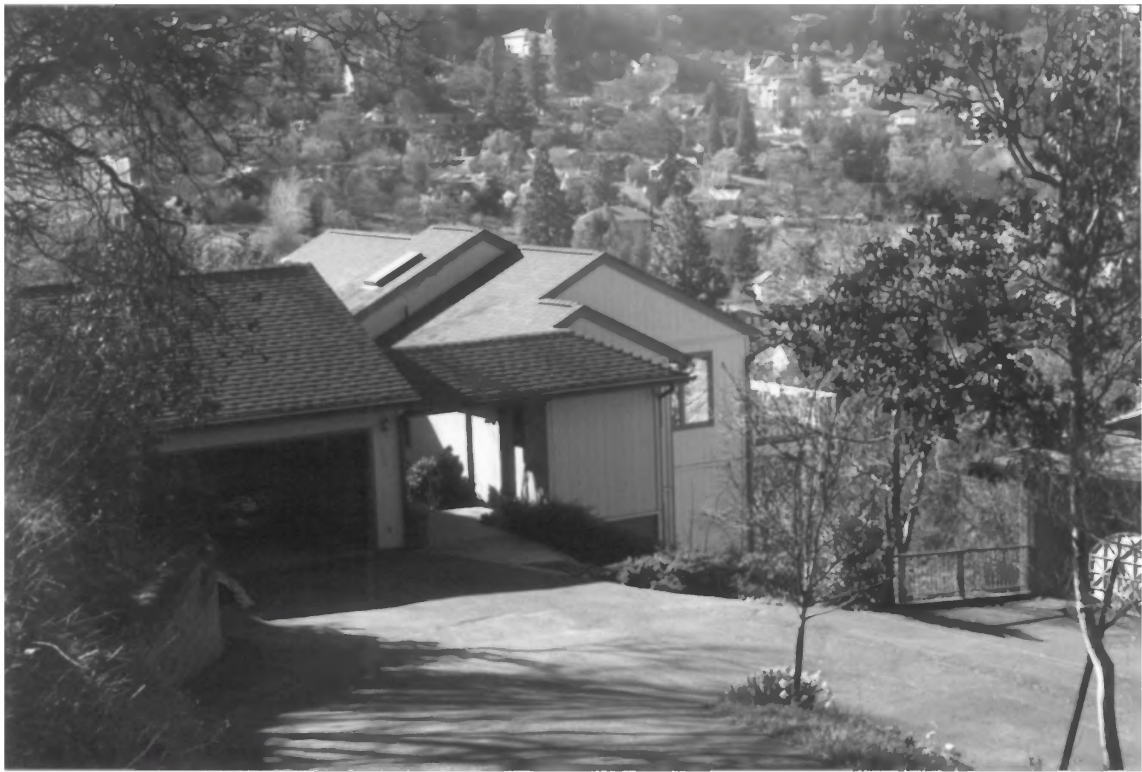


















































































NO  
PARKING









51











375













7

500 A

500A





492









412



Please  
BE CAREFUL  
WHEN BACKING UP  
DO NOT  
HIT THE FENCE





100

100  
100  
100





ALLISON  
GRESHAM





477



485

485









CHEVROLET













484

















NO  
PARKING  
THIS SIDE  
OF STREET







575















5812













1802

NISSAN









452









608  
478  
479



450





















CHEVROLET

161





373

373



215













165











PEARL  
GREEN















COUNTRY  
HOMES & REALTY  
INC.  
482-5700



360

360













206

208





1220

1220



227













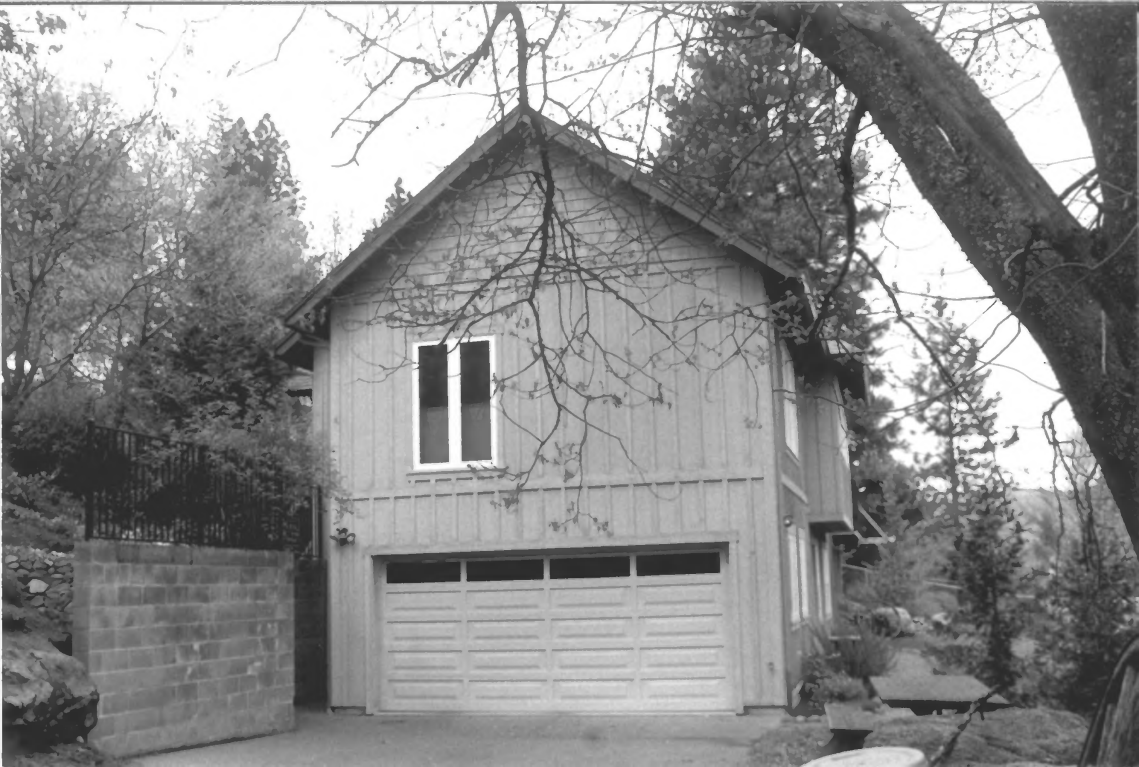
































5











175































172













NO  
PARKING























































































SISKIYOU PLAZA  
850 SISKIYOU BLVD

Acupuncture Clinic	Phyllis A. Norris, CDA
Lithia Travel	Michael Roberts, Arts
Gas Valves, MREI	Aaker Paralegal Services
Hooper & Watson, P.C.	
Edward Jones	
"Space Available": 482-0120	











LINCOLN ELEMENTARY SCHOOL

A black and white photograph of the entrance to Lincoln Elementary School. The building features a prominent portico with four tall, white columns supporting a triangular pediment. The pediment contains the school's name. The entrance is flanked by windows and has a small number above the door. A sidewalk leads to the entrance, and there are bushes and a street sign in the foreground.

LINCOLN ELEMENTARY SCHOOL

320



Use TRIANGLE PARK



WALLACE  
HILL CHAPEL  
Worship Services  
Wedding Services



ABC







203

PLANT SALE  
HENS & CHICKS  
'SUCCULENTS'







200









































176













2101422



DMB-993







136







CHIMNEY

669

669





200





170



















622

SISKIYOU BOULEVARD

LOWRIE, KNUDSEN & HOLTET

DESIGNED BY L&H

NORTH PACIFIC CONSTRUCTION

GENERAL CONTRACTORS





600

STATE FARM  
INSURANCE

Laura J. Bizby  
Insurance Agency, Inc.













560

WILLIAM L. LEE  
PHYSICIAN













539





585









500









574



568 566







540

640













7700-10

5  
4  
9













593



199



























541











545



























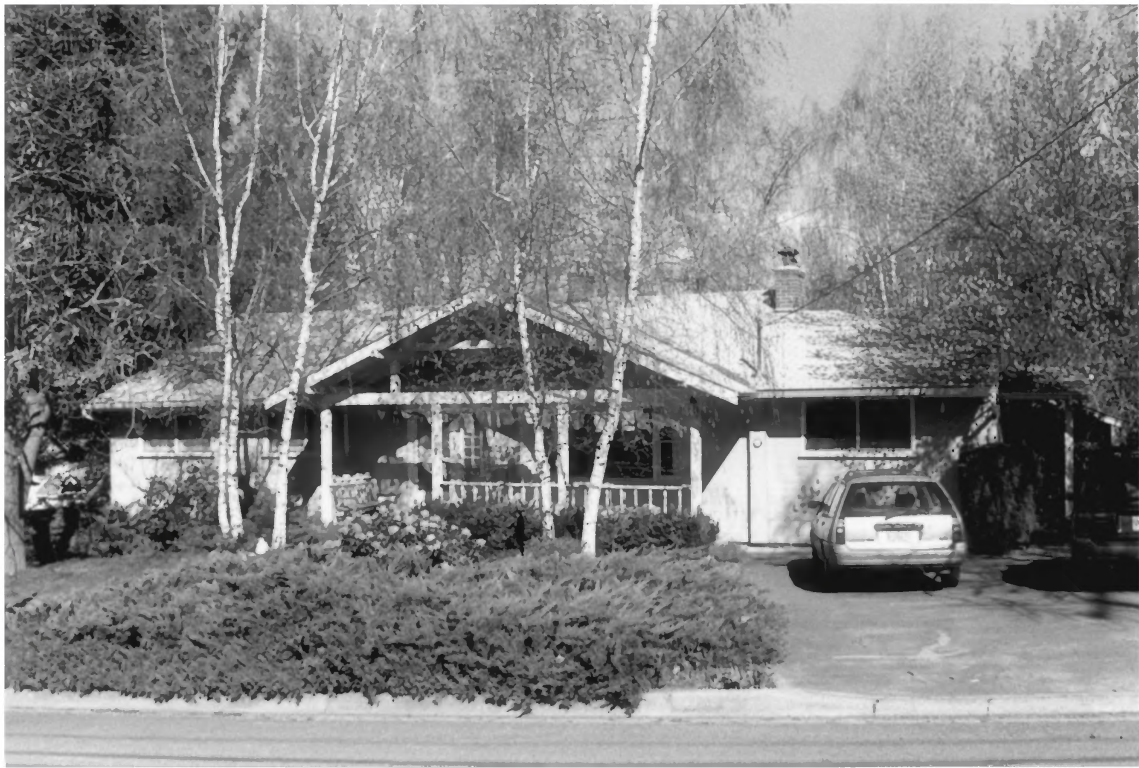


















HOLLY ST

WILSON ST



































































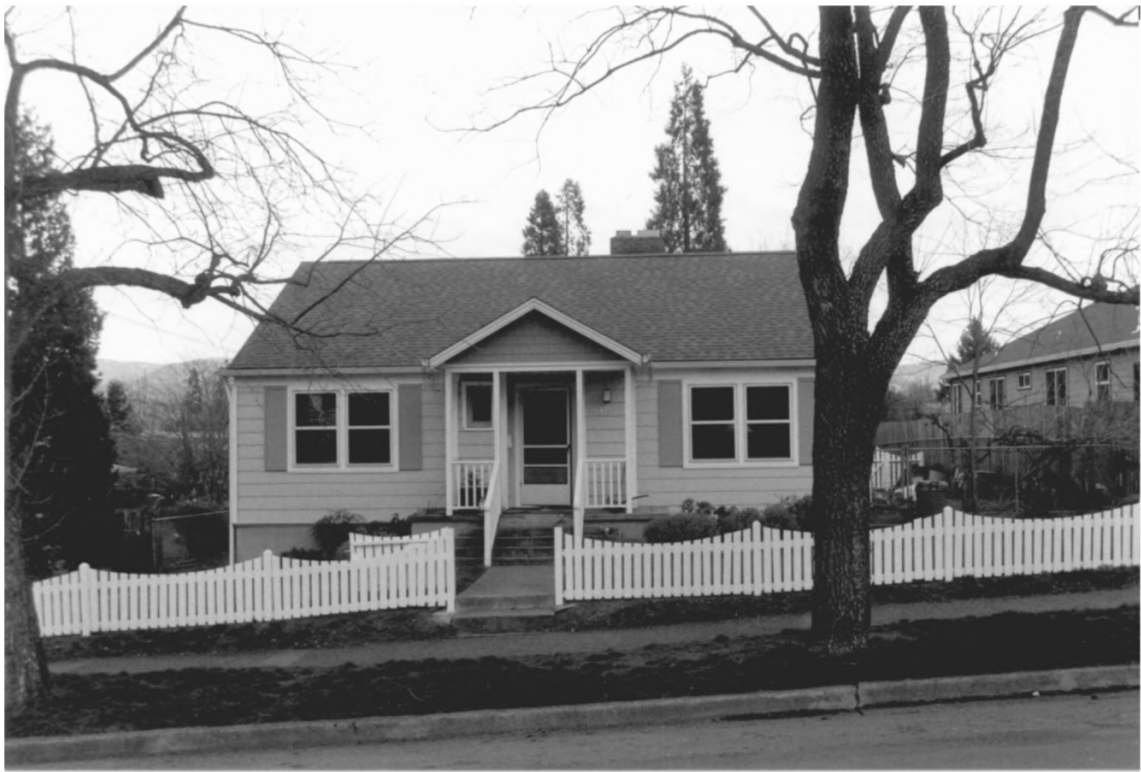


432





354















IN MEMORY OF  
SAM PRESCOTT  
VICTOR KNOTT  
KILLED IN LINE OF DUTY 1931  
MEMBER OF SOUTHERN OIL CO. LEAD  
COLUMBUS, MISSISSIPPI