



1. David S. Heath House

2. Benton County, Indiana

3. David E. Gretencord

4. September 1998
Division of Historic Preservation and Archaeology

5. Indianapolis, IN

6. Camera facing south, main facade.

7. Photograph number 1



1. David S. Heath House
2. Benton County, Indiana
3. David E. Gretencord
4. September 1998
Division of Historic Preservation + Archaeology
5. Indianapolis, IN
6. Camera facing south/southwest,
northeast view of house.
7. Photograph number 2



1. David S. Heath House

2. Benton County, Indiana

3. David E. Gretencord

4. September 1998

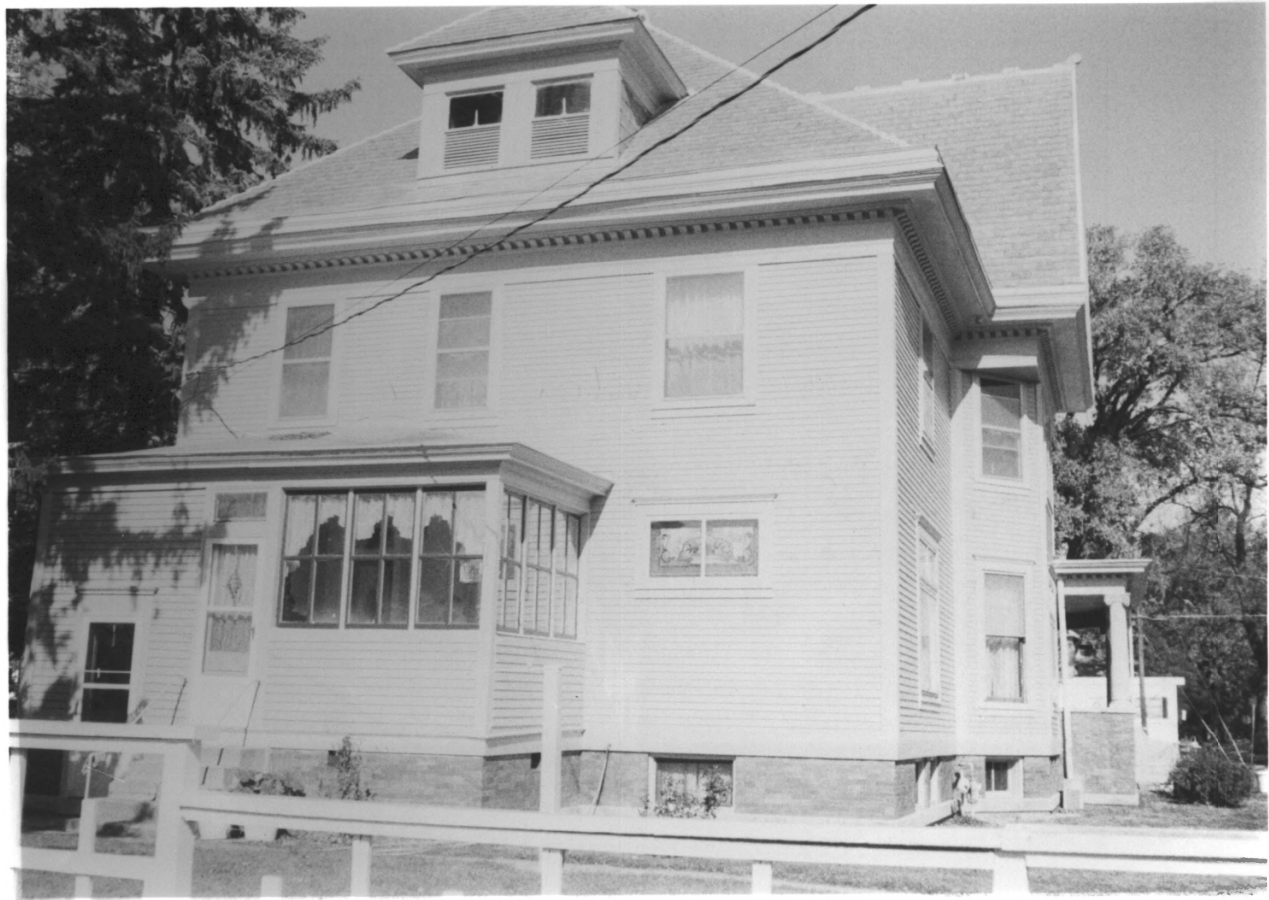
Division of Historic Preservation + Archaeo.

5.

Indianapolis, IN

6. Camera facing west/northwest,
east side view of house.

7. Photograph number 3



1. David S. Heath House
2. Benton County, INDIANA
3. David E. Gretencord
4. September 1998
Division of Historic Preservation + Archaeo-
5. Indianapolis, IN
6. Camera facing north,
rear view of house.
7. Photograph number 4



1. David S. Heath House

2. Benton County, Indiana

3. David E. Gretencord

4. September 1998

Division of Historic Preservation and Archaeology

5.

Indianapolis, IN

6. Camera facing east/southeast,
view of upper balcony.

7. Photograph number 5



1. David S. Heath House
2. Benton County, Indiana
3. David E. Gretencord
4. September 1998
5. Division of Historic Preservation + Archaeo.
Indianapolis, IN
6. Camera facing northwest,
view of veranda.
7. Photograph number 6



1. David S. Heath House

2 Benton County, Indiana

3. David E. Gretencord

4. September 1998

Division of Historic Preservation & Archaeo.

5.

Indianapolis, IN

6. Camera facing west/northwest,
_____ southeast view of carriage house.

7. Photograph number 7



1. David S. Heath House

2. Benton County, Indiana

3. David E. Gretencord

4. September 1998

Division of Historic Preservation and Archaeology

5.

Indianapolis, IN

6. Camera facing North / Northeast,

southwest view of carriage house.

7. Photograph Number 8



1. David S. Heath House

2. Benton County, Indiana

3. David E. Gretencord

4. September 1998

5. Division of Historic Preservation and Archaeo-

5

Indianapolis, IN

6. Interior view of foyer & main staircase.

7. Photograph number 9



1. David S. Heath House

2. Benton County, Indiana

3. David E. Gretencord

4. September 1998

5. Division of Historic Preservation and Archaeology
Indianapolis, IN

6. Interior view sitting room column.

7. Photograph number 10



1. David S. Heath House

2. Benton County, Indiana

3. David E. Gretencord

4. September 1998

5. Division of Historic Preservation and Archaeo.

Indianapolis, IN

6. Interior view sitting room fireplace.

7. Photograph number 11



1. David S. Heath House

2. Benton County, Indiana

3. David E. Gretencord

4. September 1998

5. Division of Historic Preservation and
Archaeology Indianapolis, IN

6. Interior view of dining room plate rail
and ANAGLYPTA.

7. Photograph number 12



1. David S. Heath House

2. Benton County, Indiana

3. David E. Gretencord

4. September 1998

5.

Division of Hist Preservation & Archaeo: Indianapolis, IN

6. Interior view of dining room

fruit Artglass (52" x 25")

7. Photograph number 13



5 14'89

1. David S. Heath House
2. Benton County, Indiana
3. David E. Gretencord
4. MAY 14, 1999
Division of Historic Preservation + Archaeology
5. Indianapolis, IN

6. Camera facing west, view of Juliette windows from first landing of main staircase. Note, view of Newel post and Foyer stained glass.
7. Photograph number 14



5 14'98

1. David S. Heath, House

2. Benton County, Indiana

3. David E. Gretencord

4. May 14, 1999
Division of Historic Preservation + Archaeology

5. Indianapolis, IN

6. Camera facing south. View of Third Floor Ball Room showing staircase, and beadboard on walls and ceiling.

7. Photograph number 15



5 14 '93

1. David S. Heath House
2. Benton County, Indiana
3. David E. Gretencord
4. May 14, 1999
Division of Historic Preservation + Archaeology
5. Indianapolis, IN
6. Camera facing North. View of Third Floor Ball Room showing alcoves and cross-design construction
7. Photograph number 16