

**United States Department of the Interior  
National Park Service**

**National Register of Historic Places  
Continuation Sheet**

Section number \_\_\_\_\_ Page \_\_\_\_\_

**SUPPLEMENTARY LISTING RECORD**

**NRIS Reference Number: 93000963**

**Date Listed: 10/1/93**

Women's Relief Corps. (WRC) Hall  
**Property Name**

Hardin  
**County**

IA  
**State**

Architectural & Historical Resources of Iowa Falls, Iowa MPS  
**Multiple Name**

-----  
This property is listed in the National Register of Historic Places in accordance with the attached nomination documentation subject to the following exceptions, exclusions, or amendments, notwithstanding the National Park Service certification included in the nomination documentation.

*for* Patrick W. Andrews  
**Signature of the Keeper**

10/1/93  
**Date of Action**

=====  
**Amended Items in Nomination:**

**UTM:**

The UTM coordinates were omitted from the nomination form. The correct coordinates were obtained from the attached USGS map.

This information was confirmed with Beth Foster of the Iowa SHPO.

**DISTRIBUTION:**

- National Register property file**
- Nominating Authority (without nomination attachment)**

973

United States Department of the Interior  
National Park Service

National Register of Historic Places  
Registration Form

RECEIVED

AUG 20 1993

NATIONAL  
REGISTER

This form is for use in nominating or requesting determinations for individual properties and districts. See instructions in *How to Complete the National Register of Historic Places Registration Form* (National Register Bulletin 16A). Complete each item by marking "x" in the appropriate box or by entering the information requested. If an item does not apply to the property being documented, enter "N/A" for "not applicable." For functions, architectural classification, materials, and areas of significance, enter only categories and subcategories from the instructions. Place additional entries and narrative items on continuation sheets (NPS Form 10-900a). Use a typewriter, word processor, or computer, to complete all items.

1. Name of Property

historic name W.R.C. Hall  
other names/site number American Legion Hall

2. Location

street & number 710 Washington Av.  not for publication  
city or town Iowa Falls  vicinity  
state Iowa code IA county Hardin code 083 zip code 50126

3. State/Federal Agency Certification

As the designated authority under the National Historic Preservation Act, as amended, I hereby certify that this  nomination  request for determination of eligibility meets the documentation standards for registering properties in the National Register of Historic Places and meets the procedural and professional requirements set forth in 36 CFR Part 60. In my opinion, the property  meets  does not meet the National Register criteria. I recommend that this property be considered significant  nationally  statewide  locally. ( See continuation sheet for additional comments.)

[Signature] 8/13/93  
Signature of certifying official/Title Date  
State Historical Society of Iowa  
State of Federal agency and bureau

In my opinion, the property  meets  does not meet the National Register criteria. ( See continuation sheet for additional comments.)

\_\_\_\_\_  
Signature of certifying official/Title Date  
\_\_\_\_\_  
State or Federal agency and bureau

4. National Park Service Certification

I hereby certify that the property is:

entered in the National Register.  See continuation sheet.

determined eligible for the National Register  See continuation sheet.

determined not eligible for the National Register.

removed from the National Register.

other. (explain:)

\_\_\_\_\_  
Signature of the Keeper Date of Action  
Patrick Andrews 10/1/93

Name of Property

County and State

5. Classification

Ownership of Property (Check as many boxes as apply)

Category of Property (Check only one box)

Number of Resources within Property (Do not include previously listed resources in the count.)

- private, public-local, public-State, public-Federal

- building(s), district, site, structure, object

Contributing Noncontributing
1 buildings
sites
structures
objects
1 Total

Name of related multiple property listing (Enter "N/A" if property is not part of a multiple property listing.)

Number of contributing resources previously listed in the National Register

Architectural & Historical Resources of Iowa Falls, IA

0

6. Function or Use

Historic Functions (Enter categories from instructions)

Current Functions (Enter categories from instructions)

SOCIAL/Meeting Hall

SOCIAL/Meeting Hall

7. Description

Architectural Classification (Enter categories from instructions)

Materials (Enter categories from instructions)

Late Victorian:

Vernacular Italianate

foundation Limestone

walls Brick

roof Asphalt

other "Brick" & metal siding

Concrete block addition

Narrative Description

(Describe the historic and current condition of the property on one or more continuation sheets.)

**8. Statement of Significance**

**Applicable National Register Criteria**

(Mark "x" in one or more boxes for the criteria qualifying the property for National Register listing.)

- A** Property is associated with events that have made a significant contribution to the broad patterns of our history.
- B** Property is associated with the lives of persons significant in our past.
- C** Property embodies the distinctive characteristics of a type, period, or method of construction or represents the work of a master, or possesses high artistic values, or represents a significant and distinguishable entity whose components lack individual distinction.
- D** Property has yielded, or is likely to yield, information important in prehistory or history.

**Criteria Considerations**

(Mark "x" in all the boxes that apply.)

Property is:

- A** owned by a religious institution or used for religious purposes.
- B** removed from its original location.
- C** a birthplace or grave.
- D** a cemetery.
- E** a reconstructed building, object, or structure.
- F** a commemorative property.
- G** less than 50 years of age or achieved significance within the past 50 years.

**Areas of Significance**

(Enter categories from instructions)

Social History

Architecture

**Period of Significance**

1898-1932

**Significant Dates**

1898

**Significant Person**

(Complete if Criterion B is marked above)

N.A.

**Cultural Affiliation**

N.A.

**Architect/Builder**

Unknown

**Narrative Statement of Significance**

(Explain the significance of the property on one or more continuation sheets.)

**9. Major Bibliographical References**

**Bibliography**

(Cite the books, articles, and other sources used in preparing this form on one or more continuation sheets.)

**Previous documentation on file (NPS):**

- preliminary determination of individual listing (36 CFR 67) has been requested
- previously listed in the National Register
- previously determined eligible by the National Register
- designated a National Historic Landmark
- recorded by Historic American Buildings Survey # \_\_\_\_\_
- recorded by Historic American Engineering Record # \_\_\_\_\_

**Primary location of additional data:**

- State Historic Preservation Office
- Other State agency
- Federal agency
- Local government
- University
- Other

Name of repository:

\_\_\_\_\_

Name of Property

County and State

10. Geographical Data

Acreage of Property Less than one acre.

UTM References

(Place additional UTM references on a continuation sheet.)

1 115 478160 4707300  
Zone Easting Northing

3           
Zone Easting Northing

4         

See continuation sheet

Verbal Boundary Description

(Describe the boundaries of the property on a continuation sheet.)

Boundary Justification

(Explain why the boundaries were selected on a continuation sheet.)

11. Form Prepared By

name/title Molly Myers Naumann, Consultant (515) 682-2743  
organization Iowa Falls Historic Preservation Commission date May 1993  
street & number City Hall, 321 Stevens telephone (515) 648-2527  
city or town Iowa Falls state IA zip code 50126

Additional Documentation

Submit the following items with the completed form:

Continuation Sheets

Maps

A USGS map (7.5 or 15 minute series) indicating the property's location.

A Sketch map for historic districts and properties having large acreage or numerous resources.

Photographs

Representative black and white photographs of the property.

Additional Items

(Check with the SHPO or FPO for any additional items)

Property Owner

(Complete this item at the request of SHPO or FPO.)

name American Legion, Hyman Peavey Post #188  
street & number 701 Washington telephone (515) 648-3738  
city or town Iowa Falls state IA zip code 50126

Paperwork Reduction Act Statement: This information is being collected for applications to the National Register of Historic Places to nominate properties for listing or determine eligibility for listing, to list properties, and to amend existing listings. Response to this request is required to obtain a benefit in accordance with the National Historic Preservation Act, as amended (16 U.S.C. 470 et seq.).

Estimated Burden Statement: Public reporting burden for this form is estimated to average 18.1 hours per response including time for reviewing instructions, gathering and maintaining data, and completing and reviewing the form. Direct comments regarding this burden estimate or any aspect of this form to the Chief, Administrative Services Division, National Park Service, P.O. Box 37127, Washington, DC 20013-7127; and the Office of Management and Budget, Paperwork Reductions Projects (1024-0018), Washington, DC 20503.

United States Department of the Interior  
National Park Service

## National Register of Historic Places Continuation Sheet

Section number 7 Page 1

CFN-259-1116

### Women's Relief Corps (W.R.C.) Hall Hardin County, Iowa

#### Description:

The two story Women's Relief Corps (W.R.C.) Hall from 1898 is located on the north side of Washington Avenue, in the middle of the block between Main and College. Rectangular in shape, it measures 22'x63' with the narrow end of the rectangle facing Washington. It is of wood frame construction with brick veneer on the facade, asphalt "brick" siding on the side elevations, and modern vertical metal siding on the rear. The flat roof slopes gently to the rear. It is a simplified vernacular Italianate commercial style building which was never used for commercial purposes. The upper level of the facade features a pressed metal cornice, simple brick patterned frieze, and two segmental arched windows, which might be found on the front of any building along the avenue. However, the treatment of the street level is unusual. Rather than a recessed entry flanked by large plate glass display windows, there is a doorway off-set to the right of center, and flanked by transom and sidelights. To the left of the door are two segmental arched windows, identical to those found above. Obviously this was not built as a place to display merchandise.

On the interior the space has largely remained unchanged, since the use of the building, as a fraternal lodge hall, has remained unchanged. The woodwork throughout has been painted, but the original woodwork with bull's eye corner blocks remains. The ceilings were lowered slightly when new ceilings were installed. A concrete block rear area was added to enclose a stairway around 1986. The foundation is of limestone and the basement floor is dirt.

United States Department of the Interior  
National Park Service

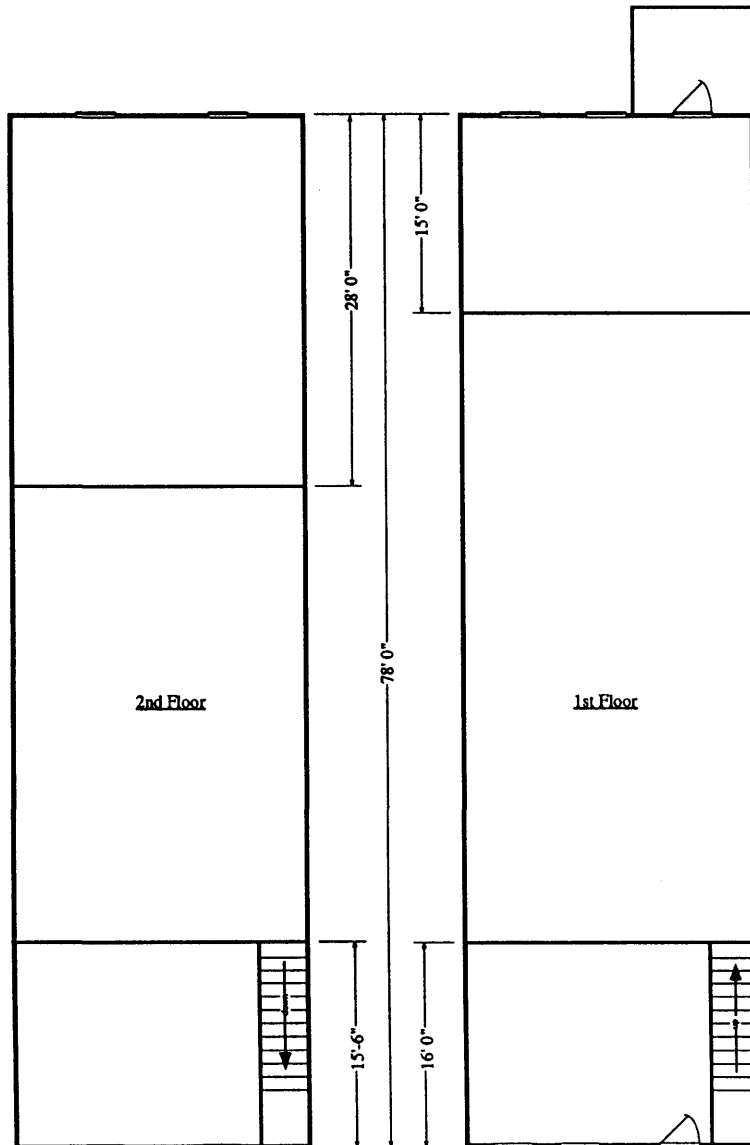
# National Register of Historic Places Continuation Sheet

Section number 7 Page 2

CFN-259-1116

Womens's Relief Corps (W.R.C.) Hall  
Hardin County, Iowa

Description (continued):



Washington Avenue

United States Department of the Interior  
National Park Service

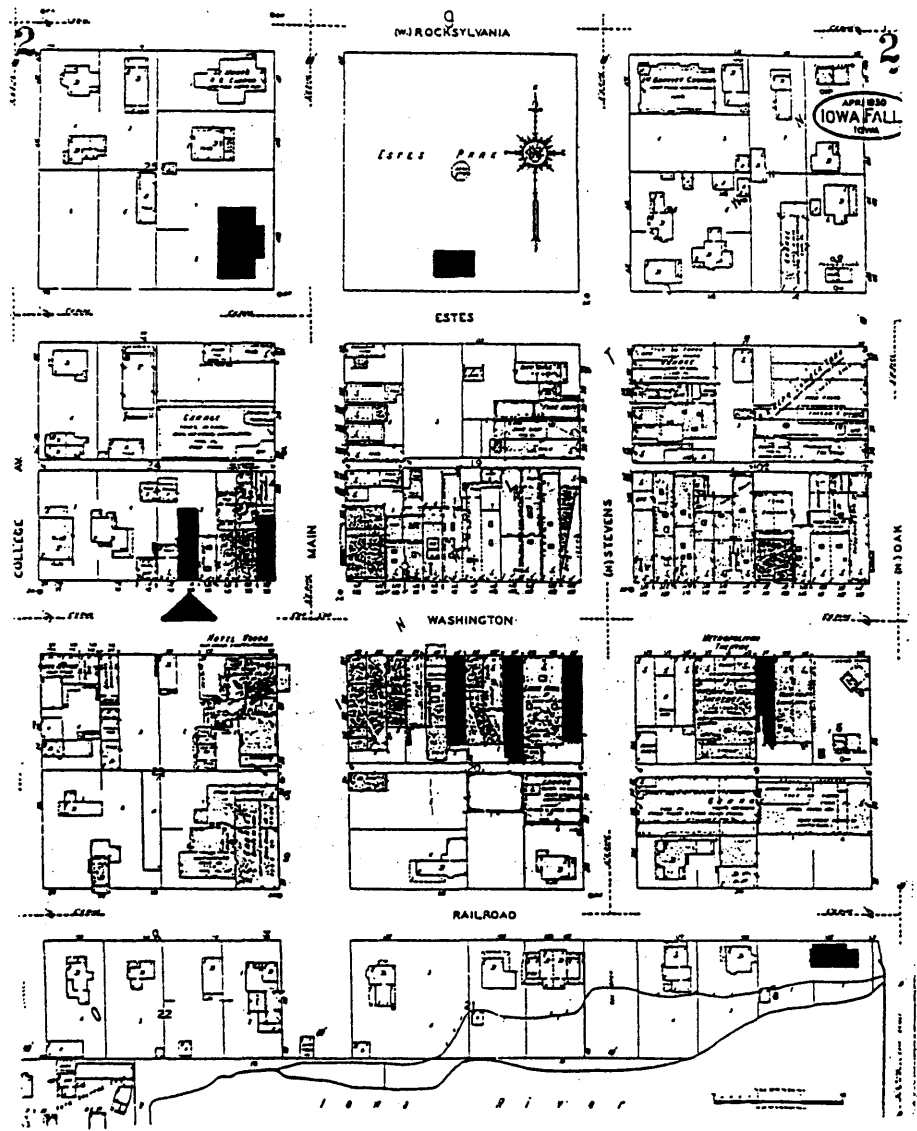
# National Register of Historic Places Continuation Sheet

Section number 7 Page 3

CFN-259-1116

Women's Relief Corps (W.R.C.) Hall  
Hardin County, Iowa

Description (continued):



## IOWA FALLS BUSINESS DISTRICT

Shaded buildings are those being nominated.

▶ indicates specific building being nominated.



United States Department of the Interior  
National Park Service

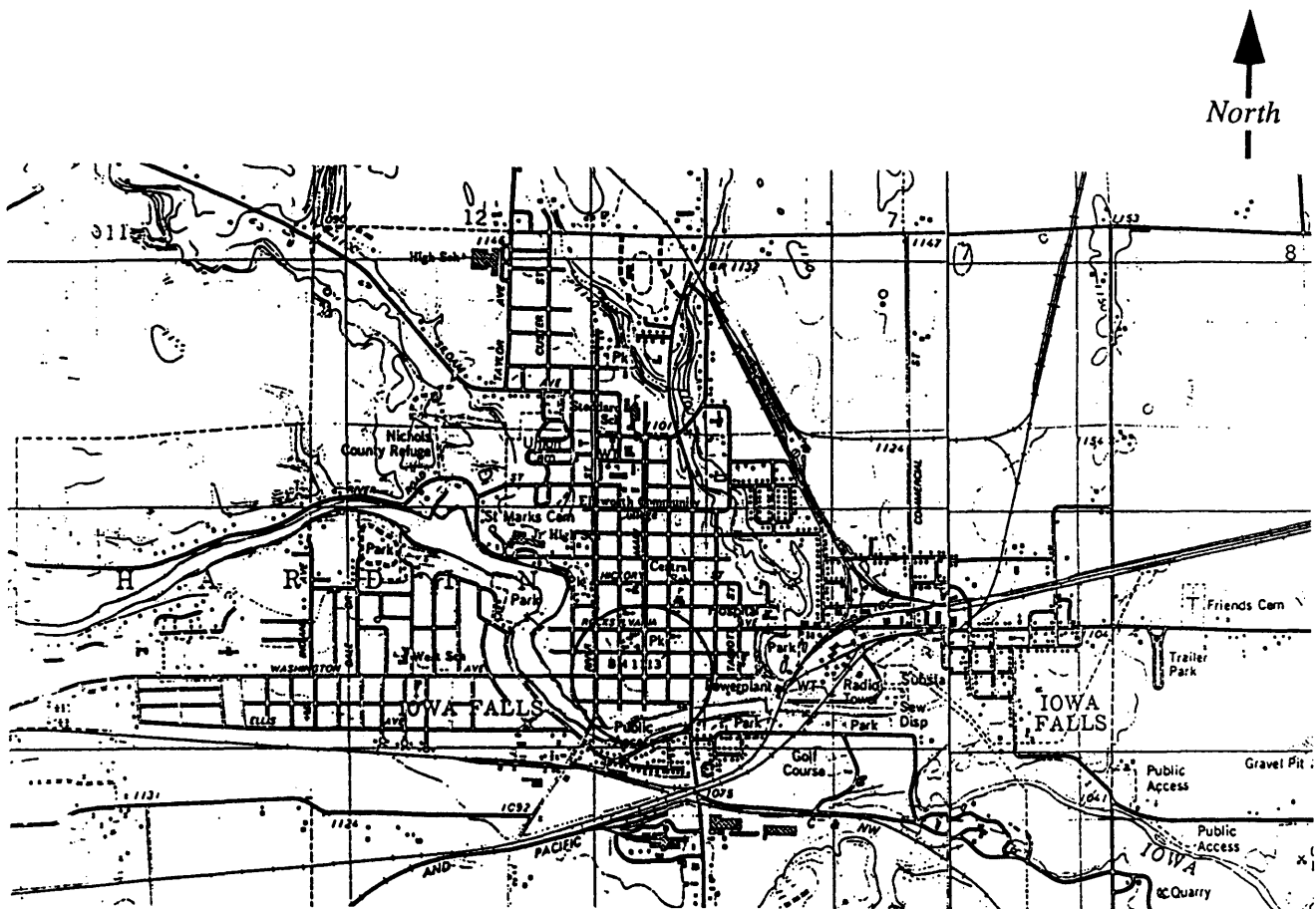
# National Register of Historic Places Continuation Sheet

Section number 7 Page 4

CFN-259-1116

Women's Relief Corps (W.R.C.) Hall  
Hardin County, Iowa

Description (continued):



Central Business District is circled.  
U.S.G.S. Map

United States Department of the Interior  
National Park Service

# National Register of Historic Places Continuation Sheet

Section number 8 Page 5

CFN-259-1116

## Women's Relief Corps (W.R.C.) Hall Hardin County, Iowa

### Significance:

The Women's Relief Corps (W.R.C.) Hall, Charles Payne Post #48 (1898) is locally significant under Criterion A as one of the few extant Womens' Relief Corps Halls in the State of Iowa, and under Criterion C because it illustrates how a common commercial design can be adapted to a different function. The period of significance is based on the utilization of the building by the W.R.C., beginning in 1898 with the construction of the building, and concluding in 1932 when the building was deeded to the American Legion.

Organized nationally in 1883, the Women's Relief Corps was one of at least three women's organizations created to serve the country's veterans. It was not until 1890 that it was formally made an auxiliary arm of the Grand Army of the Republic. Members were responsible for decorating veterans' graves on Decoration Day, for caring for disabled veterans, and for seeing to the needs of widows and orphans of Civil War veterans. Additionally, the W.R.C. cared for and beautified the grounds of Andersonville Prison in Georgia. The tender ministrations of loving hands provided by W.R.C. members to sick and dying veterans underlined the women's devotion and dedication to the United States of America.

The Women's Relief Corps of Iowa was a strong service organization for decades. In 1884, the state organization of the W.R.C. was created and the following year a state convention was held, one of only fourteen such conventions across the country. By 1912 the state boasted 214 local corps and nearly ten percent of the nation's 140,000 W.R.C. members. By the 1920s nearly 400 W.R.C. chapters had been chartered in Iowa.

Shortly after the Charles Payne Post of the Grand Army of the Republic was organized in Iowa Falls in 1883, the women of the community chartered Payne Post #48 of the W.R.C. (1886). The women were very active in the community, and as early as 1892 they had their own meeting hall on the site of the present building. Numerous suppers and talent shows were sponsored by Post #48 as part of the effort to raise money for the new building. Subscriptions were also solicited, and by October 1898 the ladies had moved into their new two story meeting house. Their fund raising activities and their dedicated service to veterans and their families continued. But as time passed and membership dwindled, the Charles Payne Post #48, W.R.C. grew less able to maintain their lodge hall. After years of Easter programs, entertainment, oyster suppers, flower sales, and tireless efforts to care for the graves of war veterans, the hall was deeded to the American Legion Building Corporation in July 1932. It continues in use today as the American Legion Hall, Hyman Peavy Post #188.

The W.R.C. Hall's significance under Criterion C is based on its unaltered condition as an example of vernacular Italianate design adapted to serve as a lodge hall, rather than a commercial enterprise. The segmental arched windows and bracketed metal cornice are the primary design elements which give this structure its Italianate character. While not a stunning example of Italianate design, this simple, quietly dignified building is typical of numerous similar buildings found throughout the state and across the nation. The adaptation made at street level to identify this as something other than a retail business

United States Department of the Interior  
National Park Service

## National Register of Historic Places Continuation Sheet

Section number 8 & 9 Page 6

CFN-259-1116

Women's Relief Corps (W.R.C.) Hall  
Hardin County, Iowa

### Significance (continued):

was accomplished very simply, by the asymmetrical placement of the entrance, and the use of tall, slender windows rather than large pieces of plate glass. The integrity level is noteworthy.

### Bibliography:

- Iowa Falls Sentinel,  
March 25, 1896, p 7 c 3  
July 29, 1896, p 5 c 1  
December 9, 1896, p 5 c 4  
December 30, 1896, p 5 c 4  
January 6, 1897 p 5 c 4  
February 10, 1897, p 5 c 4  
May 26, 1897, p 4 c 2  
June 9, 1897, no page, c 2  
September 22, 1897, p 5 c 4  
October 6, 1897, p 5 c 4  
October 27, 1897, p 5 c 3  
November 17, 1897, p 7 c 4  
December 1, 1897, p 5 c 5  
December 29, 1897, p 5 c 4  
February 23, 1898, p 5 c 2  
March 2, 1898, p 5 c 4  
April 20, 1898, p 5 c 5  
June 1, 1898, p 5 c 5  
June 8, 1898, p 5 c 5  
July 6, 1898, p 5 c 4  
September 14, 1898, p 5 c 5  
September 21, 1898, p 5 c 5  
October 5, 1898, p 5 c 4  
November 2, 1898, p 5 c 1  
December 14, 1898, p 7 c 3  
December 28, 1898, p 5 c 3
- Interviews with Jean Foster, October 29, 1992 and November 5, 1992, conducted by Virginia Schneider.
- Nichols, Ira A. History of Iowa Falls: 1900-1950. Iowa Falls: Hecht Printing Co., 1956, pp 225-7.
- Nichols, Ira A. Pioneer Days in Iowa Falls, Iowa. Fort Dodge: Messenger Printing Co., 1944, pp 137-8.
- Sanborn Fire Insurance Maps

United States Department of the Interior  
National Park Service

## National Register of Historic Places Continuation Sheet

Section number 9 & 10 Page 7

CFN-259-1116

Women's Relief Corps (W.R.C.) Hall  
Hardin County, Iowa

### Bibliography (continued):

Unofficial Proceedings in Connection with the Twenty-fourth National Encampment, Grand Army of the Republic. Held in Boston, Week of August 11-16, 1890. Issued under the Direction of the Executive Committee. Compiled by B.N. Adams, Assistant Secretary, Executive Committee. Boston: E.B. Stillings & Co., Printers, 1891, pp 189-91.

"The Woman's Relief Corps and What it Stands for Today," Ottumwa Daily Courier. August 10, 1912, no page, no column.

### Verbal Boundary Description:

City of Iowa Falls, Original Plat, Block 24, W 1/2 of the E 2/3, Lot 7.

### Boundary Justification:

This is the area historically associated with this resource.