



BRICK GOTHIC HOUSE

T72N R14W SEC 34 NE 1/4 SW 1/4

Monroe County, IA

Molly Myers Naumann

April 1993

SNPO

Distant view through Scotch pines looking NW

Photo #1



BRICK GOTHIC HOUSE

T72N R17W SEC 34 NE1/4 SW1/4

Monroe County IA

Molly Myers Naumann

April 1993

SHPO

Facade looking W through white pines

Photo # 2



BRICK GOTHIC HOUSE

T72N R17W Sec 34 NE1/4SW1/4

Monroe County, IA

Molly Myers Naumann

April 1993

SHPO

Facade looking due W

Photo #3



Breck Gothic House

T72N R17W Sec 34 NE 1/4 SW 1/4

Monroe County LA

Molly Myers Naumann

April 1993

SAPO

3/4 view facade looking NW

Photo # 4





BRICK GOTHIC HOUSE

T72N R17W Sec 34 NE1/4 SW1/4

Monroe County, IA

Molly Myers Naumann

April 1993

SWPO

South elevation looking due N

Photo #5

797



BRICK GOTHIC HOUSE

T12N R17W SEC34 NE1/4 SW1/4

Monroe County IA

Molly Myers Naumann

April 1993

SHPO

3/4 view near (west) & south elevation looking NE

Photo # 6



BRICK GOTHIC HOUSE

T72N R17W SEC 34 NE1/4 SW1/4

Monroe County IA

Molly Myers Naumann

April 1993

SWPO

3/4 view of rear (west) & north elevations looking SE

Photo # 7



BRICK GOTHIC HOUSE

T12N R17W Sec 34 NE1/4 SW1/4

Monroe County, IA

Molly Myers Naumann

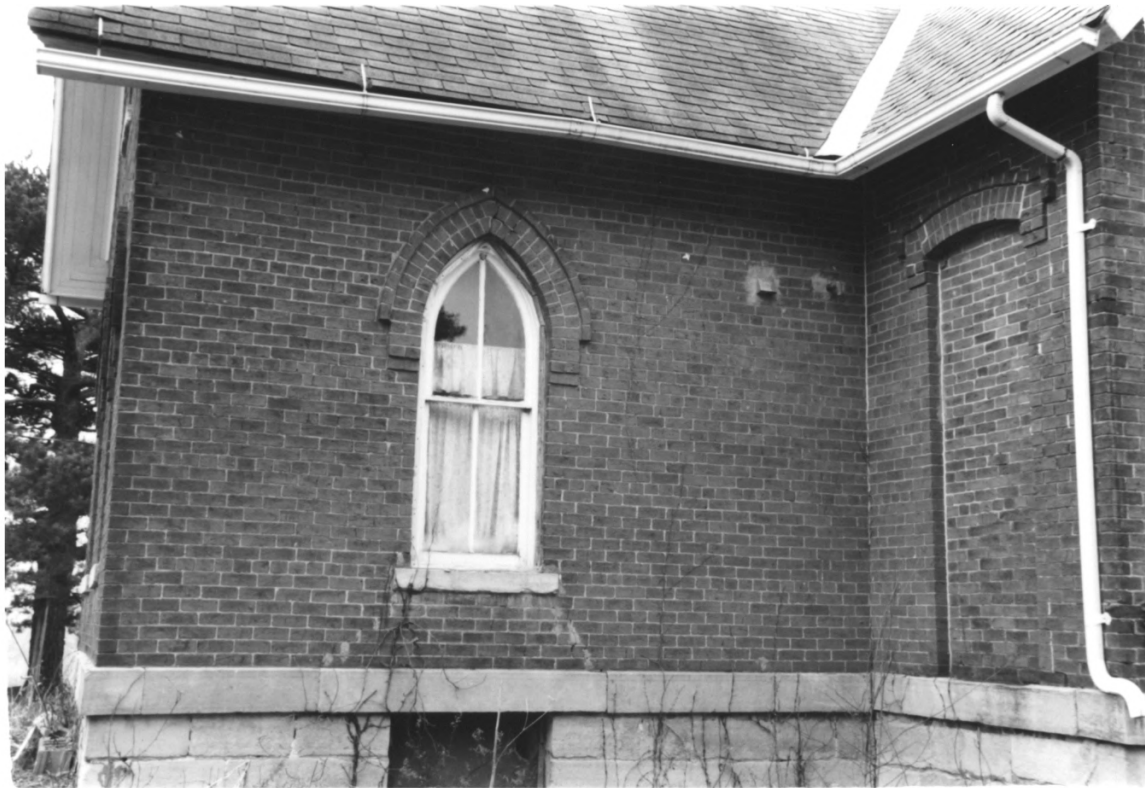
April 1993

SWFO

3/4 view facade (east) & north elevation looking SW

Photo #8





BRICK GOTHIC HOUSE

T72N R17W Sec 34 NE1/4 SW1/4

Monroe County, IA

Molly Myers Naumann

April 1993

SHPO

Detail: Gothic window on north elevation

Photo #9