

**United States Department of the Interior
National Park Service**

For NPS use only

**National Register of Historic Places
Inventory—Nomination Form**

received FEB 12 1986

date entered

MAR 13 1986

See instructions in *How to Complete National Register Forms*
Type all entries—complete applicable sections

1. Name

historic Story Grammar School

and or common same

2. Location

street & number 140 Elm Street

N/A not for publication

city, town Marblehead

N/A vicinity of

state Massachusetts

code 025

county Essex

code 009

3. Classification

Category

- district
- building(s)
- structure
- site
- object

Ownership

- public
- private
- both

Public Acquisition

- in process
- being considered

Status

- occupied
- unoccupied
- work in progress

Accessible

- yes: restricted
- yes: unrestricted
- no

Present Use

- agriculture
- commercial
- educational
- entertainment
- government
- industrial
- military
- museum
- park
- private residence
- religious
- scientific
- transportation
- other:

4. Owner of Property

name Multiple; see attached list

street & number

city, town

vicinity of

state

5. Location of Legal Description

courthouse, registry of deeds, etc. Essex South District Registry of Deeds

street & number 32 Federal Street

city, town Salem

state Massachusetts

6. Representation in Existing Surveys

Inventory of the Historic Assets of
title the Commonwealth of Massachusetts

has this property been determined eligible? yes no

date 1978

Inventory #187-16

federal state county local

depository for survey records Massachusetts Historical Commission

city, town 80 Boylston Street, Boston

state Massachusetts

7. Description Story Grammar School, Marblehead, Massachusetts

Condition

excellent
 good
 fair

deteriorated
 ruins
 unexposed

Check one

unaltered
 altered

Check one

original site
 moved date _____

Describe the present and original (if known) physical appearance

The Story Grammar School, built in 1880, is located at 140 Elm Street in Marblehead, Massachusetts. The building is 2 1/2 stories in height and rectangular in plan. A Colonial Revival red brick building with a central, pedimented pavilion and a hipped roof, the Story School has modest grey granite trim.

The school is set back 60 feet from Elm Street, and is almost centered on its 25,100-square-foot lot, which is roughly rectangular. A hill rises behind the school. The former dirt or grass school yard in front and to the sides of the school has been paved.

The Story School is located just outside the Marblehead Historic District (NR 1983), which encompasses the historic town center of Marblehead. The Marblehead Historic District is primarily composed of free-standing, wood frame residences dating from the early 18th to mid 19th century. The neighborhood around the Story School, however, has a mixture of late 19th century and 20th century properties, most in residential use.

The school building is rectangular; it is 9 bays long by 7 bays wide. Constructed of red brick, the building is 2 1/2 stories tall. A 1/2 story basement level is topped by a rough-hewn granite water table. The school rises two full stories to the cornice level, where a classical cornice including architrave, frieze and dentillated entablature is worked out in brick. The shallow, hipped slate roof rises to a small central platform pierced by two chimneys.

The main elevation of the Story School faces northeast. The facade is symmetrically organized, composed of a central 2 1/2 story pedimented pavilion with 3 bays on either side. The pavilion is quite shallow, projecting only about one foot from the main facade.

The first story of the pavilion includes a large, centered entrance reached by broad, granite steps. A segmented brick arch punctuated by a granite keystone surrounds the recessed entrance, which is flanked by two small 4/4 double-hung windows. On the second story, a large window composed of a pair of triple-hung (6/9/9) sash divided by a broad mullion is located directly above the entrance. Inset granite shields bearing the building's name and construction date are located to either side of this window. The pediment of the pavilion rises above the building's cornice line, and contains a large, centered lunette window. A flagpole is centered on the pediment.

Continued

**United States Department of the Interior
National Park Service**

**National Register of Historic Places
Inventory—Nomination Form**

For NPS use only

received

date entered

Continuation sheet Story Grammar School
Marblehead, MA

Item number 4

Page 1

Frank and Katherine Yaffa
23 Greystone Park
Lynn, MA 01901
Unit #1

Robert Merrigan and Deborah Bohnert
13 Rocky Ledge Road
Swampscott, MA 01907
Units # 2,4,6,88

Marc White and Stephanie Andrews
140 Elm Street
Marblehead, MA 01945
Unit #3

Philip Rubet
75 Nanapashmet Street
Marblehead, MA 01945
Units # 5,7

**United States Department of the Interior
National Park Service**

**National Register of Historic Places
Inventory—Nomination Form**

For NPS use only

received

date entered

Continuation sheet Story Grammar School
Marblehead, MA

Item number 7

Page 1

On either side of the pavilion, two 3/3 windows light the basement, while there are three bays holding 6/6 double-hung sash on both the first and second stories. The windows have granite sills and are crowned by brick segmented arches with granite keystones. The keystones are capped on the first story, but not on the second story.

The rear (southeast) elevation has a similar rhythm to the main facade, but lacks the projecting pedimented pavilion. The rear entrance treatment and fenestration is identical to that seen on the main facade, but this elevation is much less ornamented; there are no granite keystones decorating the entrance or window enframements and there are no granite shields on the second story. Two small skylights are visible on the rear slope of the roof, centered close the roof's edge.

The northeast and southwest (side) elevations are each seven bays wide. The window enframements on the sides have the granite keystones found on the main facade, and are filled with 6/6 double-hung sash. The fourth or center bay is filled with a blind, recessed window (with sills and lintels to match the true windows) on the first story of both side elevations and on the second story of the northeast elevation. According to the school's original floor plan, there were four classrooms on the first floor and two classrooms and an auditorium on the second floor. The blind windows reflect the location of walls between classrooms. Since the auditorium stretched the full depth of the building, all seven bays could hold windows.

The Story School was converted into eight condominium residential units in 1984. The rehabilitation was undertaken in accordance with the Secretary of the Interior's Standards for Rehabilitation.

8. Significance Story Grammar School, Marblehead, Massachusetts

Period	Areas of Significance—Check and justify below			
<input type="checkbox"/> prehistoric	<input type="checkbox"/> archeology-prehistoric	<input type="checkbox"/> community planning	<input type="checkbox"/> landscape architecture	<input type="checkbox"/> religion
<input type="checkbox"/> 1400–1499	<input type="checkbox"/> archeology-historic	<input type="checkbox"/> conservation	<input type="checkbox"/> law	<input type="checkbox"/> science
<input type="checkbox"/> 1500–1599	<input type="checkbox"/> agriculture	<input type="checkbox"/> economics	<input type="checkbox"/> literature	<input type="checkbox"/> sculpture
<input type="checkbox"/> 1600–1699	<input checked="" type="checkbox"/> architecture	<input checked="" type="checkbox"/> education	<input type="checkbox"/> military	<input type="checkbox"/> social/ humanitarian
<input type="checkbox"/> 1700–1799	<input type="checkbox"/> art	<input type="checkbox"/> engineering	<input type="checkbox"/> music	<input type="checkbox"/> theater
<input checked="" type="checkbox"/> 1800–1899	<input type="checkbox"/> commerce	<input type="checkbox"/> exploration/settlement	<input type="checkbox"/> philosophy	<input type="checkbox"/> transportation
<input type="checkbox"/> 1900–	<input type="checkbox"/> communications	<input type="checkbox"/> industry	<input type="checkbox"/> politics/government	<input type="checkbox"/> other (specify)
		<input type="checkbox"/> invention		

Specific dates 1880 **Builder Architect** unknown

Statement of Significance (in one paragraph)

The Story School has integrity of location, design, setting, materials, workmanship, and feeling, with associations with the educational history of Marblehead, Massachusetts. Built in 1880, the school represents the first significant financial commitment to public education in the town. The use of a restrained Colonial Revival style for the school is a relatively early use of the style that would be so popular in school architecture in the 20th century, and may reflect the design of the 1790 Marblehead Academy, an early private school. The Story School thus meets criteria A and C for listing to the National Register of Historic Places, with significance at the local level.

The history of public education in the town of Marblehead closely parallels its commercial history. Fishing, shipbuilding, rope and sail making and later, shoe manufacturing historically employed the town residents. Although as early as 1647 the Massachusetts Bay Colony had ordered the establishment of public schools based on population, it was not until 1767 that Marblehead established its first school committee and hence formally endorsed and funded public education. In practice, however, school planning and budgets from the late 18th to the mid 19th century fluctuated according to the financial condition of the town.

Public education was further hampered by the fact that most young boys went to sea at the age of 11 and that a high percentage of girls worked in home industries or domestic jobs. Therefore, it was not until 1802-3 that public primary schools (Grades 1-4) were formally established. Up until 1840 the town of Marblehead had built only three schools. All three were one room buildings constructed of wood, for a total cost of \$400. The 1849 Town Records indicate that only 671 pupils out of a possible 1582 even attended school in that year. The more affluent citizens of Marblehead sent their children to private classes held in small rented halls or in teachers' homes. These children were being prepared for the Marblehead Academy (built 1790, demolished 1879), which was established in 1789 by some of the town's most influential citizens, including Samuel Sewall, Robert Hooper and Dr. Elisha Story. These small private classes and the existence of the Marblehead Academy alleviated pressure on the school trustees to make improvements in the public schools. Therefore, the influence of and commitment to public education was quite limited until the mid 19th century, when Marblehead experienced a period of business growth and a substantial increase in population.

The arrival of the railroad in Marblehead in 1839 and a move from home to factory production catalyzed the growth of shoe manufacturing in the town. A 50-year population decline was halted and the population grew 25% between 1850

Continued

9. Major Bibliographical References

See continuation sheet.

10. Geographical Data

Acreage of nominated property 25,244 square feet

Quadrangle name Marblehead North, MA

Quadrangle scale 1:25,000

UTM References

A 19 347560 4707250
Zone Easting Northing

B
Zone Easting Northing

C

D

E

F

G

H

Verbal boundary description and justification

The nominated property includes the lot on which the school has historically stood. Please see the attached plot plan for details.

List all states and counties for properties overlapping state or county boundaries

state	code	county	code
<u>N/A</u>			
state	code	county	code

11. Form Prepared By

name/title Mary Kate Sampson, Preservation Planner, with Elaine Finbury, Historic Preservation Consultant

organization Massachusetts Historical Commission

date November 1985

street & number 80 Boylston Street

telephone 617-727-8470

city or town Boston

state Massachusetts

12. State Historic Preservation Officer Certification

The evaluated significance of this property within the state is:

national state local

As the designated State Historic Preservation Officer for the National Historic Preservation Act of 1966 (Public Law 89-665), I hereby nominate this property for inclusion in the National Register and certify that it has been evaluated according to the criteria and procedures set forth by the National Park Service.

State Historic Preservation Officer signature Valeri A. Talmage

title Executive Director, Massachusetts Historical Commission
State Historic Preservation Officer

date Feb. 5, 1986

For NPS use only

I hereby certify that this property is included in the National Register

Entered in
National Register

date 3-13-86

for Allores Byers
Keeper of the National Register

Attest:

date

Chief of Registration

**United States Department of the Interior
National Park Service**

**National Register of Historic Places
Inventory—Nomination Form**

For NPS use only
received
date entered

Continuation sheet Story Grammar School
Marblehead, MA

Item number 8

Page 1

and 1870. This increase in population began to create the necessary pressure for the improvement of town facilities. In 1850, Marblehead's public schools were rated 310th out of 313 cities and towns in the state. However, the period from 1840-1860 saw some expansion in public education, with eleven new schools established. However, most of these operated in rented rooms in existing frame houses. Prevailing educational theory had divided the town into three districts: North, South and Central. Primary (1-4) and grammar schools (5-8) were intended to serve children from the district neighborhoods. Girls and boys were taught in separate schools, and physical conditions were primitive. The Town Reports indicate that as many as 104 primary-age children were taught in one room. Most school houses closed in the winter and those that remained open were heated by wood stoves. Students took turns cutting wood, fetching water and performing janitorial duties.

By 1860 it became apparent that many students from the primary schools were unable to pass literacy tests that were a prerequisite to entering grammar school. The prevailing educational policy of "districting" began to give way to a new theory of "grading". A new level of education was introduced called "intermediate", which was the 5th and 6th year of schooling. Thus, primary ran 1-4, intermediate 5 and 6, and grammar 7-9. In 1860, the town ran 19 small school houses, which indicates that the grading system, although formally endorsed, was not widely applied, and that small, segregated neighborhood school houses continued to predominate.

The original Story Grammar School was one of these 19 schools. Although its date of construction is unknown, the school was located diagonally across from the site of the current Story School and served 194 male pupils. The Town Reports of 1878 indicate overcrowded conditions at the Story Boys Grammar School. Additional space at the South Church (built ca. 1850, burned 1877) was let for intermediate students, and the second floor of the Town House (1727) housed the overflow of grammar school students. For these reasons, the School Committee of 1878 cited the need for a new school house.

The new Story School was built on land formerly belonging to John Prince, manufacturer, near the former Harris Shoe factory. The area on Elm Street had at one time been a concentrated shoe manufacturing area, but on June 25, 1877, a fire obliterated 72 buildings in the area, including shoe factories, stores, the railroad depot and the South Church. The old Story School does not appear to have been burned in the fire. In response to the disaster, Marblehead experienced a great building surge from 1877-1888. Abbot Hall, a new fire station, a railroad depot, five new factories and the Story School were all built during that period.

Continued

United States Department of the Interior
National Park ServiceNational Register of Historic Places
Inventory—Nomination Form

For NPS use only

received

date entered

Continuation sheet Story Grammar School
Marblehead, MA

Item number 8

Page 2

The construction of the Story School in 1880 represented the first significant financial commitment to public education on the part of the town of Marblehead. The Story Grammar School was the first masonry school to be built and the largest school to have been built to that time. The Town Records report an appropriation of \$17,500 to construct and equip the school house, a princely sum compared to the \$2,500 appropriated in the mid 1870s for the Sewall Grammar School for Girls, located just down the street at the intersection of Elm and Spring Streets.

The Story Grammar School was the first truly "modern" school house in Marblehead. The school was open year round, and thus had a heating and ventilating system. There were four large classrooms on the first floor and two classrooms and a large auditorium with a podium on the second. The architect for the school is not known. However, there is a possibility that the school's design may have been patterned after the 1790 Marblehead Academy. In 1879, just a year before the Story School was built, the Marblehead Academy had been demolished. The Academy was a two-story brick building, seven bays wide, with a shallow central pavilion and a hipped roof. The relationship between the two school buildings' designs is extremely close. If the Marblehead Academy was the inspiration for the design of the Story School, it would help to explain the relatively early use of the Colonial Revival style.

The Story School was named after Joseph Story (1779-1845), one of Marblehead's most distinguished citizens of the early 19th century. Story was the son of Dr. Elisha Story, an eminent local physician, a member of the Sons of Liberty during the Revolutionary War and one of the founders of the Marblehead Academy. Joseph Story was educated at the Academy and at Harvard College, was chosen as a representative to the Massachusetts Legislature at a young age, elected to the U. S. Congress, and upon returning to the state legislature, was Speaker of the House. At 33, he was appointed to the U. S. Supreme Court under Chief Justice John Marshall, and later served as the Dane Professor of Law at the new Harvard Law School.

The Story Grammar School opened in October of 1881 and graduated its first class of 31 boys in 1882. The school's operations represented another change in educational theory, as the intermediate and grammar school levels were merged. English, grammar, geography, mental arithmetic and fractions were taught, along with some elective courses in music and singing. For most children in 19th century Marblehead, grammar school represented the end of formal education and sufficient training for "the duties and responsibilities of business life." Although high school classes began in 1865, it was not until 1913 that a public high school was built.

Continued

**United States Department of the Interior
National Park Service**

**National Register of Historic Places
Inventory—Nomination Form**

For NPS use only

received

date entered

Continuation sheet Story Grammar School
Marblehead, MA

Item number 8

Page 3

The Story School is one of three brick grammar schools standing in Marblehead; the others are the Samuel Roads, Jr. School (1904) on Rowland Street and the Elbridge Gerry School (1906) on Elm Street. Both of these later schools are substantially larger than the Story School. They are also Colonial Revival buildings, but have far more detailing than the Story. Finally, both of these schools have sustained more exterior alterations than the Story School.

The Story School operated for almost one hundred years, finally closing in 1978. The school has since been converted to eight condominium residences, and the building's renovation was undertaken in accordance with the Secretary of the Interior's Standards for Rehabilitation.

There are no prehistoric archaeological sites recorded on the property or in close proximity to the property. Little is known about the previous use of the property, although the site may have seen light industrial use before the construction of the school, since there was some shoe manufacturing in this area in the mid nineteenth century. The potential for historic archaeological resources is slight.

United States Department of the Interior
National Park Service

**National Register of Historic Places
Inventory—Nomination Form**

For NPS use only

received

date entered

Continuation sheet Story Grammar School
Marblehead, MA

Item number 9

Page 1

BIBLIOGRAPHIC REFERENCES

Aldrich William, Marblehead Buildings.

Dunn, Gerald T., Justice Joseph Story.

National Register Nomination, Joseph Story House, 26 Winter Street, Salem.

Rhodes, Samuel Jr., History and Traditions of Marblehead, 1880, Houghton & Co.

Salem Evening New, Schools--History of Marblehead Schools.

March 12, 1937 - Story Grammar School

March 20, 1942 - Story Boys Grammar School

October 7, 1943 - Marblehead Academy

Marblehead Town Reports, 1835-1913.

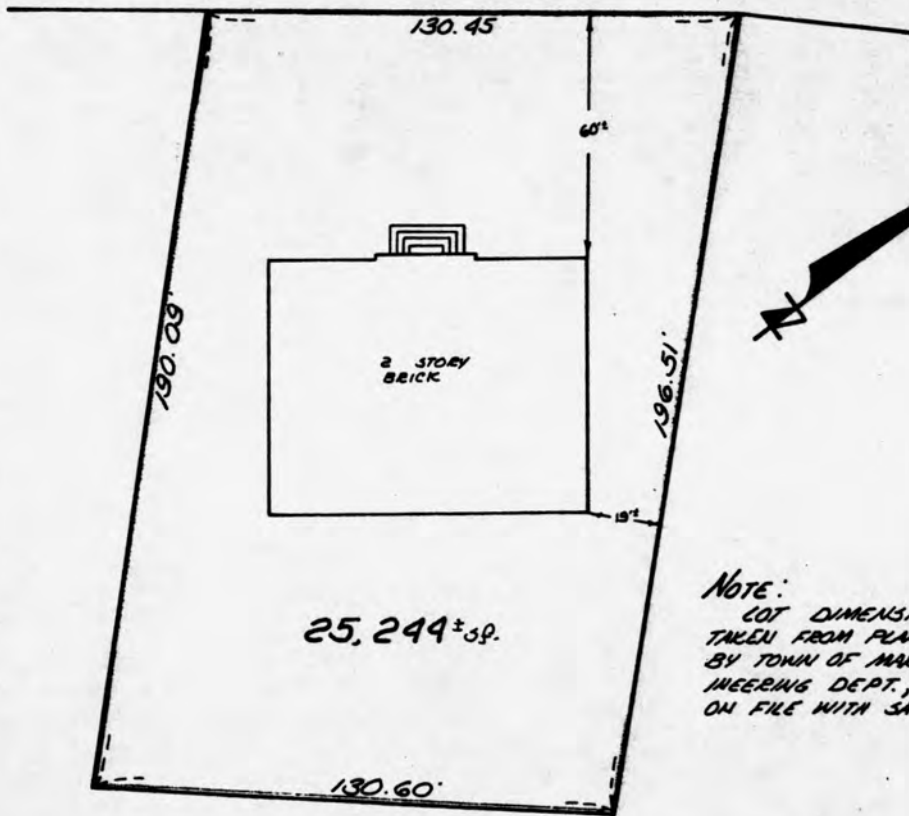
Marblehead School Reports, 1847-1867; 1867-1900

Marblehead Vital Records, 1820-1900.

Gamage and Virginia, Marblehead.

Marblehead Press.

ELM STREET



25,244 ± sq.

Note:
 LOT DIMENSIONS SHOWN
 TAKEN FROM PLAN PREPARED
 BY TOWN OF MARBLEHEAD ENG-
 INEERING DEPT., FEB. 3, 1983
 ON FILE WITH SAID DEPT.

NOTES:

1. THIS PLAN IS INTENDED FOR MORTGAGE AND TITLE INSURANCE PURPOSES AND HAS NOT PREPARED FOR RECORDING.
2. PROPERTY LINES SHOWN WERE NOT ESTABLISHED FROM A MECHANICAL PROPERTY SURVEY AND OFFSETS SHOWN SHOULD NOT BE USED TO ESTABLISH PROPERTY LINES

TITLE REF. (ESSEX REG. OF DEEDS)
 DEED: BOOK ; PAGE

I HEREBY CERTIFY THAT THE STRUCTURES SHOWN ON THIS PLAN ARE LOCATED ON THE GROUND AS INDICATED, IN CONFORMANCE WITH TOWN OF MARBLEHEAD ZONING LAWS IN EFFECT AT THE TIME OF CONSTRUCTION, AND THAT THE PARCEL DOES NOT FALL IN A FLOOD HAZARD AREA AS DESIGNATED ON THE M.D. MAP FOR COMMUNITY NO. 250091 A EFFECTIVE DATE 6-18-76

2-7-84 *Therese E. Dwyer*



CERTIFIED PLOT PLAN
 140 ELM STREET
 IN
 MARBLEHEAD, MASS.

SCALE 1" = 30'
 DTE & DWYER, INC.
 6 WEBB PLACE

FEB. 7, 1984
 SURVEYORS
 SAUGUS, MASS.

22133

STORY GRAMMAR SCHOOL
 140 Elm Street
 Marblehead, Massachusetts

STORY SCHOOL

Ref # 8600037E

NATIONAL REGISTER OF HISTORIC PLACES
EVALUATION/RETURN SHEET

Story Grammar School
Essex County
MASSACHUSETTS

FEB 12 1986

Working No. _____

Fed. Reg. Date: 2/3/87

Date Due: 3/13/86 - 3/29/86

Action: ACCEPT 3-13-86

RETURN

REJECT

Federal Agency: _____

Entered in the
National Register

- resubmission
- nomination by person or local government
- owner objection
- appeal

Substantive Review: sample request appeal NR decision

Reviewer's comments:

Recom./Criteria _____

Reviewer _____

Discipline _____

Date _____

_____ see continuation sheet

Nomination returned for: _____ technical corrections cited below
_____ substantive reasons discussed below

1. Name

2. Location

3. Classification

Category	Ownership	Status	Present Use
	Public Acquisition	Accessible	

4. Owner of Property

5. Location of Legal Description

6. Representation in Existing Surveys

Has this property been determined eligible? yes no

7. Description

Condition

<input type="checkbox"/> excellent	<input type="checkbox"/> deteriorated	Check one	Check one
<input type="checkbox"/> good	<input type="checkbox"/> ruins	<input type="checkbox"/> unaltered	<input type="checkbox"/> original site
<input type="checkbox"/> fair	<input type="checkbox"/> unexposed	<input type="checkbox"/> altered	<input type="checkbox"/> moved date _____

Describe the present and original (if known) physical appearance

- summary paragraph
- completeness
- clarity
- alterations/integrity
- dates
- boundary selection

8. Significance

Period _____ Areas of Significance—Check and justify below _____

Specific dates _____ Builder/Architect _____
Statement of Significance (*in one paragraph*) _____

- summary paragraph
- completeness
- clarity
- applicable criteria
- justification of areas checked
- relating significance to the resource
- context
- relationship of integrity to significance
- justification of exception
- other

9. Major Bibliographical References

10. Geographical Data

Acreage of nominated property _____

Quadrangle name _____

UTM References _____

Verbal boundary description and justification _____

11. Form Prepared By

12. State Historic Preservation Officer Certification

The evaluated significance of this property within the state is:

____ national ____ state ____ local

State Historic Preservation Officer signature _____

title _____ date _____

13. Other

- Maps
- Photographs
- Other

Questions concerning this nomination may be directed to _____

Signed _____ Date _____ Phone: _____



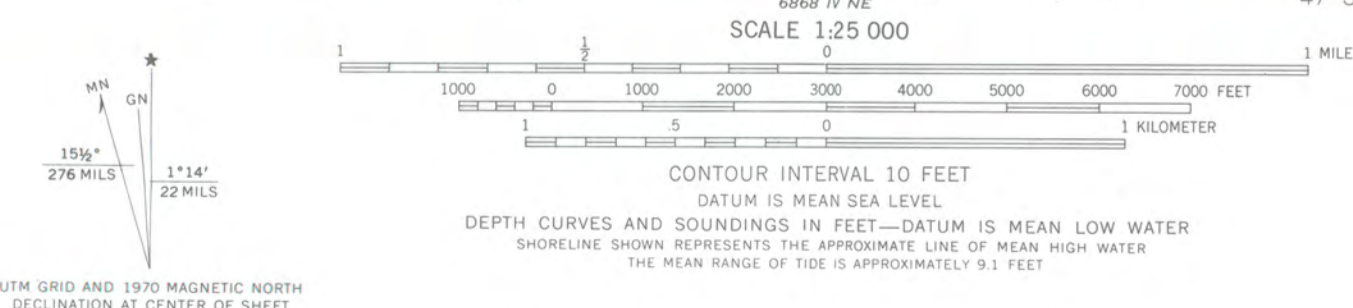
STORY GRAMMAR SCHOOL
140 Elm Street
Marblehead, Massachusetts

Neg. with Elaine Finbury
Aug 1985
Main facade, view to the southwest



STORY GRAMMAR SCHOOL
140 Elm Street
Marblehead, Massachusetts
Marblehead North Quadrangle
Scale: 1:25,000
UTM Reference: 19/347560/4707250

Mapped, edited, and published by the Geological Survey
Control by USGS, USC&GS, and Massachusetts Geodetic Survey
Planimetry by photogrammetric methods from aerial photographs taken 1938. Topography by planetable surveys 1942. Revised from aerial photographs taken 1969. Field checked 1970
Selected hydrographic data compiled from USC&GS Charts 240 and 241 (1970). This information is not intended for navigational purposes
Polyconic projection. 1927 North American datum
10,000-foot grid based on Massachusetts coordinate system, mainland zone
1000-meter Universal Transverse Mercator grid, zone 19
Boundaries in tidewater areas from information supplied by Massachusetts Department of Public Works
Red tint indicates areas in which only landmark buildings are shown



THIS MAP COMPLIES WITH NATIONAL MAP ACCURACY STANDARDS
FOR SALE BY U. S. GEOLOGICAL SURVEY, RESTON, VIRGINIA 22092
A FOLDER DESCRIBING TOPOGRAPHIC MAPS AND SYMBOLS IS AVAILABLE ON REQUEST

MARBLEHEAD NORTH, MASS.
N4230—W7045/7.5
1970
AMS 6869 III SE—SERIES V814



PJ84 880 608

The Commonwealth of Massachusetts

Office of the Secretary of State
Michael Joseph Connolly, Secretary

Massachusetts Historical Commission
Valerie A. Talmage
Executive Director
State Historic Preservation Officer

Rec'd
FEB 12 1986

February 4, 1986

Carol Shull
National Register of Historic Places
Department of Interior, National Park Service
P.O. Box 37127
Washington, DC 20013-7127

Dear Ms. Shull:

Enclosed you will find the following nomination forms:

Boston (Roxbury), HARRISWOOD CRESCENT, 60-88 Harold Street (inclusive),
15 properties.

Boston (Charlestown), MONUMENT SQUARE HISTORIC DISTRICT, 1-50 Monument
Square, 47 properties, HPCA #0641-85-MA-85-0651, denied, appeal pending.

Foxboro, CARY, OTIS HOUSE, 242 South Street.

Marblehead, STORY GRAMMAR SCHOOL, 140 Elm Street, HPCA pending
#0621-84-MA-84-0624.

All have been voted eligible by the State Review Board and have been
signed by the State Historic Preservation Officer. Owners were notified
of pending State Review Board consideration 30-75 days before the
meeting and were afforded the opportunity to comment. Comments re-
ceived to date are attached to the nomination forms.

Sincerely,

Sarah J. Zimmerman
Director, Preservation Planning
Massachusetts Historical Commission

SJZ/dr

Enclosures

Correction



The Commonwealth of Massachusetts

Office of the Secretary of State
Michael Joseph Connolly, Secretary

Massachusetts Historical Commission

Valerie A. Talmage

Executive Director

State Historic Preservation Officer

April 9, 1986

Carol Shull
National Register of Historic Places
Department of Interior
National Park Service
P.O. Box 37127
Washington, DC 20013-7127

Dear Ms. Shull:

This letter is to inform you of a typographical error in your recent listing for the Story Grammar School in Marblehead, Massachusetts, listed on March 13, 1986. The listing misspelled "Grammar" as "Grammer".

Thank you for your attention to this matter.

Sincerely,

A handwritten signature in cursive script that reads "Sarah J. Zimmerman".

Sarah J. Zimmerman
Director, Preservation Planning
Massachusetts Historical Commission

SZ/dr