

RS100001356



United States Department of the Interior  
National Park Service

# National Register of Historic Places Registration Form

This form is for use in nominating or requesting determinations for individual properties and districts. See instructions in National Register Bulletin, How to Complete the National Register of Historic Places Registration Form. If any item does not apply to the property being documented, enter "N/A" for "not applicable." For functions, architectural classification, materials, and areas of significance, enter only categories and subcategories from the instructions.

### 1. Name of Property

Historic name Bartley Sales Barn and Livestock Facility  
The Round Sales Barn; Bartley Sales Pavilion; Bartley Community Sales Barn;  
Other names/site number Pioneer Sale Barn / RW01-023  
Name of related multiple property listing N/A  
(Enter "N/A" if property is not part of a multiple property listing)

### 2. Location

Street & Number Southwest corner of U.S. Hwy 34 (Nebraska Highway 6) and Commercial Street  
City or town Bartley State Nebraska County Red Willow  
Not for publication  Vicinity  N/A

### 3. State/Federal Agency Certification

As the designated authority under the National Historic Preservation Act, as amended, I hereby certify that this  nomination  request for determination of eligibility meets the documentation standards for registering properties in the National Register of Historic Places and meets the procedural and professional requirements set forth in 36 CFR Part 60.

In my opinion, the property  meets  does not meet the National Register Criteria. I recommend that this property be considered significant at the following level(s) of significance:  national  statewide  local

Applicable National Register Criteria:  A  B  C  D  
[Signature] SHPO/Director

5/22/18  
Date

Signature of certifying official/Title

Nebraska State Historical Society

State or Federal agency/bureau or Tribal Government

In my opinion, the property  meets  does not meet the National Register criteria.

Signature of Commenting Official

Date

Title

State of Federal agency/bureau or Tribal Government

### 4. National Park Service Certification

I, hereby, certify that this property is:

- entered in the National Register.
- determined eligible for the National Register.
- determined not eligible for the National Register.
- removed from the National Register.
- other, (explain):

[Signature]  
Signature of Keeper

6-25-2018  
Date of Action

Bartley Sales Barn and Livestock Facility  
Name of Property

Red Willow County, Nebraska  
County and State

**5. Classification**

**Ownership of Property** (Check as many boxes as apply)

- Private
- Public-local
- Public-state
- Public-federal

**Category of Property** (Check only one box)

- Building(s)
- District
- Site
- Structure
- Object

**Number of Resources within Property** (Do not include previously listed resources in the count.)

Contributing	Noncontributing	
<u>4</u>	<u>1</u>	Buildings
<u>      </u>	<u>      </u>	Sites
<u>      </u>	<u>      </u>	Structures
<u>      </u>	<u>      </u>	Objects
<u>4</u>	<u>1</u>	Total

Number of contributing resources previously listed in the National Register N/A

**6. Function or Use**

**Historic Functions** (Enter categories from instructions.)

AGRICULTURE/SUBSISTENCE/animal facility

AGRICULTURE/SUBSISTENCE/agricultural outbuilding

COMMERCE

**Current Functions** (Enter categories from instructions.)

WORK IN PROGRESS

RECREATION AND CULTURE/theater (anticipated)

COMMERCE/specialty stores (anticipated)

**7. Description**

**Architectural Classification** (Enter categories from instructions.)

OTHER: octagonal barn

OTHER: agricultural vernacular

**Materials** (enter categories from instructions.)  
Principal exterior materials of the property:

Board-formed poured concrete foundations, novelty wood siding, corrugated steel or aluminum sheets, and asphalt shingle roofing.

Bartley Sales Barn and Livestock Facility

Red Willow County, Nebraska

**Name of Property****County and State****Description**

**Summary Paragraph** (Briefly describe the general characteristics of the property, such as its location, type, style, method of construction, setting, size, and significant features. Indicate whether the property has historic integrity.)

The Bartley Sales Barn and Livestock Facility is located in the southwest corner at the intersection of U.S. Highway 34 (Nebraska Highway 6) and Commercial Street within the corporate limits of Bartley (2010 pop. 283).<sup>1</sup> The property includes a sales barn, a connector barn, a cattle barn, and a hog farrowing barn that collectively make-up this agricultural complex. Prominent among the assemblage is the sales barn, an octagonal-shaped sales pavilion built of frame construction and capped by an octagonal monitor. A connector barn joins the cattle barn to the sales barn. The cattle barn is orientated along the east-west axis. The hog farrowing barn forms a 90-degree angle with the cattle barn and is oriented along the north-south axis. The construction of the connector barn, hog-farrowing barn, and cattle barn was completed by 1920.<sup>2</sup> The location of an outdoor corral, south of the sales barn and east of the farrowing barn, is now vacant and covered in grass. Original materials from the buildings, including window framing and mullions from the fenestrations in the sales barn monitor and the cattle barn, original doors and door framing, as well as original wood for the auction ring and the grandstand seating, have been temporarily removed while the owner, Mr. Greg Hoffman, restores the buildings for adaptive re-use. In its current condition, the entire collection of buildings – the sales barn, the connector barn, the cattle barn and the hog farrowing barn – retain integrity of location, setting, design, workmanship, materials, feeling and association, and convey the historic associations for which they are significant. In addition, the sales barn is one of six octagon barns remaining in the 11-county Republican Valley region of Nebraska,<sup>3</sup> and it is the only octagonal sales barn in Red Willow County.

**Narrative Description** (Describe the historic and current physical appearance and condition of the property. Describe contributing and noncontributing resources if applicable.)

Sales Barn (contributing)

Built in 1919 of wood-frame construction, the barn is octagonal in shape, each wall measuring 17-feet 5-inches wide and 12-feet 3 ½-inches high. The width of the barn from the west wall to the east wall measures 43-feet 6-inches. An octagonal-shaped monitor caps the roof. The monitor walls measure 5-feet high and 8-feet wide.<sup>4</sup> Historically, the monitor had trios of four-pane casement windows. Currently, the window fenestrations are boarded while the original frames and mullions are being restored.

The rafters of the main hip roof, below the monitor, are supported at mid-span with purlins, which in turn are supported at mid-span by posts. The roof and walls are tied together and reinforced with a simple diagonal, truss-like construction at each corner of the building. These probably serve not only to reinforce the roof at the hip rafter, but to brace the whole structure surrounding the large open interior against lateral loading as well.

The foundation is board-formed, poured concrete. Base metal flashing is exposed at the sill along the entire perimeter. The barn, including the monitor, reaches an approximate height of 45-feet above the ground.

The unsheathed walls are sided with horizontal shiplap boards, or novelty siding, the corners of which are sealed with sheet metal corner tabs. Doorway arrangements are functional. The openings on the northwest, southwest, and east sides of the barn were originally equipped with wood doors with six-light, three-panel (vertical) doors with large strap hinges. A door of

<sup>1</sup> United States Census 2010 webpage, <https://www.census.gov/2010census/popmap/ipmtext.php?fl=31>, accessed February 9, 2018.

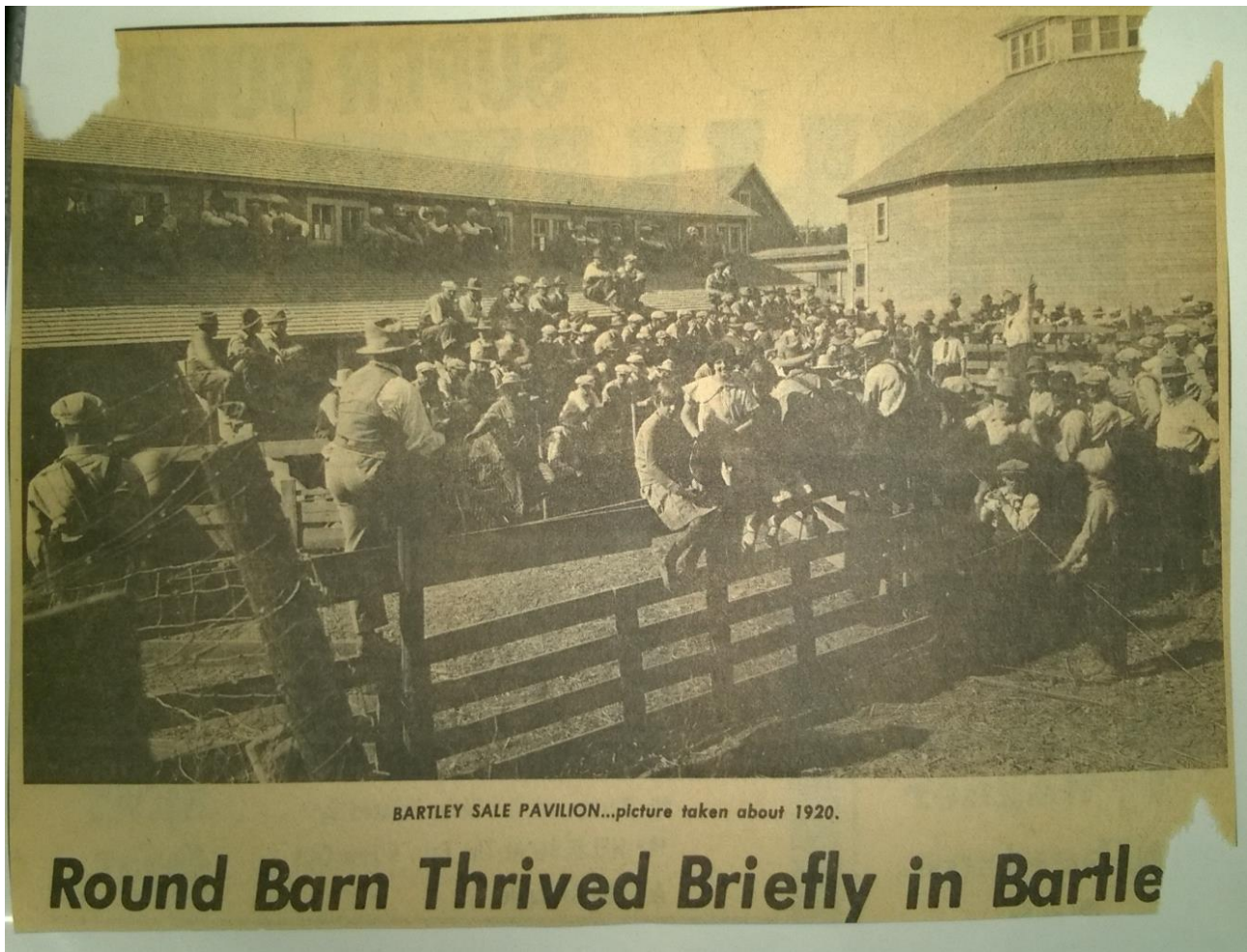
<sup>2</sup> "Nebraska Historic Sites Survey Form," second page, Site File RW01-023, on file, Nebraska State Historic Preservation Office, Lincoln, NE; Connie Jo Discoe, "Round Barn Thrived Briefly in Bartley," *McCook Daily Gazette* (McCook, NE), Wednesday, August 4, 1976, [microfilm] M13g, Reel #170. The photo's byline that reads, "Bartley Sale Pavilion...picture taken about 1920." During an interview with local Bartley historian, Mrs. Patsy Redfern on March 3, 2018, the date of the photograph was confirmed. Mrs. Redfern was able to identify her father in the photo, as well as other cattlemen from the area. The hog farrowing barn as well as the cattle barn, connector barn, the sales barn, and the non-extant corral, are visible, evidence that the livestock barns were constructed about year after the sales barn. An image of the 1976 newspaper clipping was obtained through the Museum of the High Plains Historical Society's archives.

<sup>3</sup> The 11-county Republican Valley region of Nebraska includes the following counties: Franklin, Frontier, Furnas, Gosper, Hayes, Harlan, Hitchcock, Nuckolls, Red Willow, Thayer, and Webster.

<sup>4</sup> Greg Hoffman, email message containing measurements of the barn to the author, March 12, 2017.

Bartley Sales Barn and Livestock FacilityRed Willow County, Nebraska**Name of Property****County and State**

this type remains on the Farrowing Barn (Image 6). They were replaced with wood sliding doors outside of the period of significance; however, similar to the windows from the monitor, the original doors are undergoing restoration efforts. Two main level walls with doors—the northwest and the southwest—contain a small window opening above each entryway. Historically the windows in the monitor, as well as the three openings, were the only means by which natural light could enter the space for the auctions. The light-colored plywood sheathing in the roof shows through gaps in the original spaced sheathing. Spaced sheathing was used with wood shingles to allow them to dry evenly after rains and avoid curling. Wood shingle deterioration likely prompted the application of asphalt shingles in 1986.<sup>5</sup> Inside, the dirt auction floor is entirely open except for eight wood posts that support the monitor as well as the eight at the mid-span of the purlins. Prior to restoration efforts, the barn had ten rows of wood-plank stadium seating that surrounded an octagonal-shaped dirt sales floor cordoned off with three-foot-high barrier boards as well as eight wood posts, drilled and threaded with rope or wire. Overall, the sales barn retains good historic integrity.



**Figure 1:** “Round Barn Thrived Briefly in Bartley.” McCook Daily Gazette (McCook, NE), July 2, 1976. Newspaper clipping photo courtesy Museum of the High Plains Historical Society Archives, McCook, NE.

**Connector Barn (contributing)**

The connector barn was constructed c.1920. It is a one-story structure between the cattle barn and the sales barn used both as an alleyway for cattle and as a scale room. The interior holds some mechanical components of the livestock scales pen used during the period of significance. The connector barn measures 17-feet by 15-feet and is sided with horizontal shiplap boards. The low-pitch, shed roof is clad with corrugated metal sheets. One sliding wood door and one two-over-two

<sup>5</sup> “Bartley sale barn’s story has 8 sides, many asides,” *The Lincoln Journal* (Lincoln, NE), July 24, 1986.

Bartley Sales Barn and Livestock FacilityRed Willow County, Nebraska**Name of Property****County and State**

wood casement window are located on the north façade; these fenestrations are mirrored on the south façade. Except for the loss of glass in the south façade window, the connector barn retains good historic integrity.

Farrowing Barn (contributing)

The hog farrowing barn has a length of 82-feet and a width of 24-feet. Constructed c.1920, the story-and-a-half rectangular barn has a monitor roof and is sided with horizontal shiplap boards. Six, 21½-inch, two-over-two, wood frame windows line the east and west façades. Both façades are punctuated with a 28-inch by 28-inch opening for ventilators. Alterations to the barn are minimal and in general, it retains good historic character. A c.1920 photograph of the sales barn complex published in the *McCook Daily Gazette* in 1976 shows that the monitor roof historically had longer sides with paired two-over-two framed clerestory windows.<sup>6</sup> It is not known when the monitor roof was lowered but a review of the materials suggests it occurred during the 1930s or 1940s. The southern gable end of the barn was rehabilitated in the 1970s, and except for the metal or vinyl corrugated roof panels, the materials were replaced in kind. The interior holds the original hog farrowing crates. It maintains good integrity and contributes to the agricultural character of the complex.

Cattle Barn (contributing)

Located directly west of the connector barn along the east-west axis is the cattle barn. Also constructed c.1920, it measures 64-feet long by 32-feet wide and reaches a height of 20-feet to the main beam. Similar to the other barns, the cattle barn is sided with horizontal shiplap boards. The side-gable building has seven two-over-two frame windows on the south and north elevations. The window fenestrations are boarded while the original frames and mullions are being restored. Single, glassed, two-over-one frame windows located in both the west and east end gable peaks. The west end has one sliding wood door and is flanked by boarded, single two-over-two wood casement fenestrations. In recent years, drainage issues have occurred along the south side foundation. Efforts are underway to stabilize and reinforce materials there (Image 12). Overall, the barn's integrity is good and it contributes to the agricultural character of the complex.

Roof Extension (non-contributing)

The north end of the Farrowing Barn is connected to the Connector Barn via a roof extension; date of construction is unknown. The area, once unsheltered in-between the four barns, measures 14-feet long by 15-feet wide. A gable roof made out of wood rafters and covered with corrugated metal sheets protects this area.

---

<sup>6</sup> Connie Jo Discoe, "Round Barn Thrived Briefly in Bartley," *McCook Daily Gazette* (McCook, NE), Wednesday, August 4, 1976.

Bartley Sales Barn and Livestock Facility  
**Name of Property**

Red Willow County, Nebraska  
**County and State**

**8. Statement of Significance**

**Applicable National Register Criteria**

(Mark "X" in one or more boxes for the criteria qualifying the property for National Register listing.)

- A** Property is associated with events that have made a significant contribution to the broad patterns of our history.
- B** Property is associated with the lives of persons significant in our past.
- C** Property embodies the distinctive characteristics of a type, period, or method of construction or represents the work of a master, or possesses high artistic values, or represents a significant and distinguishable entity whose components lack individual distinction.
- D** Property has yielded, or is likely to yield information important in prehistory or history.

**Criteria Considerations**

(Mark "X" in all the boxes that apply.)

Property is:

- A** Owned by a religious institution or used for religious purposes.
- B** Removed from its original location.
- C** A birthplace or a grave.
- D** A cemetery.  
A reconstructed building, object, or structure.
- E** A commemorative property.
- F** Less than 50 years of age or achieved significance within the past 50 years.

**Areas of Significance**

(Enter categories from instructions.)

AGRICULTURE

COMMERCE

ARCHITECTURE

**Period of Significance**

1919-c.1927

**Significant Dates**

1919 - Construction (sales barn)

c.1920 - Construction (connector barn, farrowing barn, cattle barn)

c.1927 - End of livestock sales

**Significant Person**

(Complete if Criterion B is marked above.)

N/A

**Cultural Affiliation**

N/A

**Architect/Builder**

N/A

Bartley Sales Barn and Livestock Facility

Red Willow County, Nebraska

**Name of Property**

**County and State**

**Statement of Significance Summary Paragraph** (Provide a summary paragraph that includes level of significance, applicable criteria, justification for the period of significance, and any applicable criteria considerations.)

The Bartley Sales Barn and Livestock Facility comprised of the sales barn, the connector barn, the farrowing barn, and the cattle barn, is eligible at the local level under Criterion A: Agriculture. The Bartley Sales Barn and Livestock Facility is a unique assemblage of buildings. Not only did it produce and sell Poland China hogs on site, it held and sold cattle between 1919 and c.1927. It is a rare example of diversified livestock farming practices within the Republican Valley.

The complex is also eligible under Criterion A: Commerce at the local level. The Bartley Sales Barn and Livestock Facility came into existence through the progressive efforts of a group of local farmers and breeders who wanted to find new markets and increase demand for their products. Taken as a whole, the group of buildings represent early twentieth century livestock sales and production farm architecture that between 1919 and c.1927 operated as the only local nexus between buyer and seller in livestock trading.

Eligible under Criterion C: Architecture, the Bartley Sales Barn is significant at the local level as one of an increasingly limited number of non-orthogonal barns in Nebraska. It is also an example of the second phase of such construction in the state, and one that mirrored regional agricultural building trends occurring in the Midwest during the years 1905 to 1920.<sup>7</sup> In form, the barn continues to reflect the origins of its plan and accurately conveys its distinct agricultural architectural style.

The period of significance is derived from the sales barn's construction date of 1919 to c.1927 when the Republican Valley Poland China Breeders Association disbanded and livestock sales and production discontinued at the facility.

**Narrative Statement of Significance** (Provide at least one paragraph for each area of significance.)

Set in the northeast quarter of Red Willow County, Bartley is part of the larger 11-county region of the Republican River Valley and smaller portions of the Loess Plain area. Upland soils are fertile while the lowlands remain productive due to close proximity to the Republican River. The town sits on a bluff north of the Republican River surrounded by land platted in the 1870s.<sup>8</sup> By the mid-1880s, Reverend Allen Bartley, the town's energetic founder, directed the platting of 80 city blocks for his fledging community. Incorporation followed in 1887 shortly after surveying completed.<sup>9</sup> The earliest available map of Bartley dated 1905 shows Lots 1-5 of Block 70—the sales barn current and original location—were unoccupied at the time.<sup>10</sup>

**Criterion A: Agriculture**

Agriculture in the Republican Valley region did not develop fully into a cash grain and livestock production area until the first decade of the twentieth century. Prior to that, the lack of dependable rainfall in this region forced many early settlers to leave Nebraska. There also existed a general lack of understanding as to how to best cultivate the semi-arid land in order to make it more productive. Corn was the primary crop since it was cheap to produce. Farms were subsistence-based, and the lack of adequate transportation systems made most farm work labor-intensive. Farmers and ranchers in the Republican

<sup>7</sup> National Register of Historic Places, *Frank Uehling Barn*, (Uehling, Dodge County, Nebraska, ID#85001666), section 8 <http://www.nebraskahistory.org/histpres/nebraska/dodge/DD00-049-Uehling-Barn.pdf>. Accessed January 7, 2017.; National Register of Historic Places, *Couser Barn*, (Laurel, Cedar County, Nebraska, ID#86001714), section 8 . [http://www.nebraskahistory.org/histpres/nebraska/cedar/CD00-012\\_Couser\\_Barn.pdf](http://www.nebraskahistory.org/histpres/nebraska/cedar/CD00-012_Couser_Barn.pdf). Accessed January 7, 2017.

<sup>8</sup> *1860-1954 Tract Books Index*, "John A. Johnson," reels 20 and 25; "Frank Larson," reels 20 and 25. <http://www.nebraskahistory.org/databases/tractbooks.shtml>. Accessed January 28, 2017. The Nebraska Homestead Records, available online at <https://www.fold3.com/>, at the University of Nebraska-Lincoln Love Library, and at Homestead National Monument, contains abbreviated information on Red Willow County. Section 6, Township 3, Range 26 West is not currently among the group of documents scanned in by the National Archives; *United States, Bureau of Land Management Land Patents*, John A. Johnson, NE Vol 35, Certificate No. 107, Page 54, June 20, 1874; also, Frank Larson, NE Vol 35, Certificate No. 112, Page 105, March 15, 1875. <http://www.glorerecords.blm.gov/> Accessed January 28, 2017.

<sup>9</sup> *Nebraska Historic Buildings Survey for Red Willow County, Nebraska* (Madison, WI: Mead & Hunt, 2002), 10.

<sup>10</sup> *Red Willow County Atlas*, "Plat of Bartley," (Chicago: Geo. A. Ogle & Co., Publishers and Engravers, 1905), 56. Digitized copy available at Nebraska State Historical Society's Archeology Office.

**Bartley Sales Barn and Livestock Facility**

**Red Willow County, Nebraska**

**Name of Property**

Valley began to take greater notice of these issues once scientific developments and mechanization proved pragmatically useful. Labor-saving farm implements, refrigerated railcars, livestock selection and breeding practices, as well as crop rotation – winter wheat, oats, and alfalfa – coalesced resulting in greater yields and higher profits. In particular, alfalfa proved very useful: it grew easily in the alluvial soils of the Republican River Valley; it was cheap; and it made good fodder for cattle.<sup>11</sup> Following broader national trends in agriculture, farms and ranches in this region increasingly focused their operations on livestock production. Data from the Census of Agriculture for the years 1920 and 1925 supports this statement as shown in the Table 1 below. Prior to World War I, swine breeding and production became popular among farmers because it was highly profitable, while beef cattle production gained traction only after hog prices fell during the early 1920s.

**Table 1: Cattle and Swine present on farms for Red Willow and Surrounding Counties, 1920 and 1925**

Beef Cattle†			Swine‡		
Red Willow* and Bordering Counties	1920	1925	Red Willow* and Bordering Counties	1920	1925
Frontier	39	40	Frontier	29	40
Furnas	21	34	Furnas	30	46
Gosper	19	23	Gosper	23	26
Hayes	21	22	Hayes	17	23
Hitchcock	22	22	Hitchcock	13	27
Red Willow	16	26	Red Willow	21	27

\* The Village of Bartley's county location

† 1920 numbers are from *County Table II – Live-Stock on Farms and Ranges, 1920 and; Live-Stock Products, 1920* (pages 699-702); 1925 numbers are from "cattle total number" line 10 on *County Table III – Livestock on Farms, January 1, 1925; and Livestock Products, 1924 and 1919* (pages 1148-1160) excluding "dairy heifers" line 13, and "dairy cows" line 16. All numbers are in thousands and rounded to the nearest thousand.

‡ 1920 numbers are from *County Table II – Live-Stock on Farms and Ranges, 1920 and; Live-Stock Products, 1920* (pages 699-702); 1925 numbers are from "swine total number" line 28 on *County Table III – Livestock on Farms, January 1, 1925; and Livestock Products, 1924 and 1919* (pages 1148-1160). All numbers are in thousands and rounded to the nearest thousand.

Except for the farm crisis of the 1930s, livestock and cash grain production trends stabilized with the assistance of government programs in the agriculture sector. Prosperity, however, did not return to the Republican Valley until World War II when demand for agricultural products increased and farm economies improved.<sup>12</sup>

The Bartley Sales Barn and Livestock Facility is a unique assemblage of buildings as a Republican Valley Livestock, Cash Grain and General Farming Type. When compared to the other six octagon sales barns extant within the Republican Valley region, the facilities either produced and sold swine, or, held and auctioned livestock. The Bartley Facility did both. The Republican Valley Poland China Breeders Association, which acquired ownership of the complex in June of 1920, likely pushed for the construction of the farrow barn in order to sell piglets.<sup>13</sup> Simultaneously, livestock transported to this facility were held in the cattle barn prior to being sold at auction. Spatial arrangement of the buildings emphasized efficiency and functionality of livestock movement to, from, and around the cluster of barns. Most likely, the purpose of the livestock barns was to support the commercial efforts of the sales barn, but the agricultural functions practiced within them typifies breeding and diversified livestock operations in the Republican Valley during the first quarter of the twentieth century.

<sup>11</sup> *Historic Context Report 08.06, "Republican Valley General Farming, Cash Grain, and Livestock Production,"* (On file, Nebraska State Historic Preservation Office, Lincoln, NE.), 6-7; *Historic Contexts in Nebraska, "Temporal Periods"* (On file, Nebraska State Historic Preservation Office, Lincoln, NE.), 9-14.

<sup>12</sup> *Historic Context Report 08.06, "Republican Valley General Farming, Cash Grain, and Livestock Production,"* (On file, Nebraska State Historic Preservation Office, Lincoln, NE.), 6-7; *Historic Contexts in Nebraska, "Temporal Periods"* (On file, Nebraska State Historic Preservation Office, Lincoln, NE.), 9-14.

<sup>13</sup> Connie Jo Discoe, "Round Barn Thrived Briefly in Bartley," *McCook Daily Gazette* (McCook, NE), Wednesday, August 4, 1976, in RW01-023 Site File, Nebraska State Historic Preservation Office, and on Microfilm, M13g, Reel No. 170.



Bartley Sales Barn and Livestock Facility  
**Name of Property**

Red Willow County, Nebraska  
**County and State**



**Figure 2:** Photograph of a sales auction event at Bartley Sales Barn Complex circa 1920. (Photo courtesy Patsy Redfern's private collection-Bartley, NE)

Criterion A: Commerce

Many communities in western Nebraska at the end of the nineteenth century knew that the promise of commerce was connected to railroad access. This idea was not lost on Reverend Allen Bartley, the town's founder, who in 1887 approached the Chicago, Burlington & Quincy Railroad (CB&Q)<sup>14</sup> and convinced them to build a spur line into Bartley.<sup>15</sup> Prior to this, the nearest rail access was through Indianola, six miles west of Bartley. Once the spur line was completed and a depot built, it established a much-needed transportation link into Bartley and one that attracted more settlers, as well as new businesses to the town.<sup>16</sup> A key to its success, the rail line helped stimulate Bartley's economy for the first decade of the 20<sup>th</sup> century. However, it was not the only transportation link available in Red Willow County. The Detroit-Lincoln-Denver (DLD) Highway, established in 1911 as portion of the nation's first transcontinental highway, was constructed. It stimulated further economic development and connected Bartley with towns in neighboring counties creating more opportunities for trade and commerce.<sup>17</sup>

During the first decade of the twentieth century, the agricultural community surrounding Bartley transitioned to livestock and away from early crops such as corn. A few years later, ranchers found themselves profiting from the unusual livestock market demands created during and after World War I. Realizing these markets were neither stable nor sustainable, local cattlemen and other business people rallied around the common economic goal of constructing a livestock sales barn. With a railroad line and a highway already in place, it seemed reasonable to this group that a sales barn could provide another avenue by which to connect livestock producers to buyers.

At the time the sales barn was constructed in 1919, changes were taking place within the broader meat industry that would affect big central packing centers such as the Omaha Union Stock Yards. Since the invention and use of the refrigerator car

<sup>14</sup> The Chicago, Burlington & Quincy Railroad purchased the Nebraska Burlington & Missouri River Railroad in 1882, NSHS Manuscript Collections RG3913.AM, CB&QRR-Lines West, Series 3, Book 14.

<sup>15</sup> *Nebraska Historic Buildings Survey for Red Willow County, Nebraska* (Madison, WI: Mead & Hunt, 2002), 10; James J. Sughrue, *Views of a College Town, 1886-1891, Bartley, Nebraska*, (Indianola, NE: Sughrue, 1986), 6-8.

<sup>16</sup> NSHS Manuscript Collections, RG3913.AM, CB&QRR-Lines West, Series 3, Book 14.

<sup>17</sup> *Nebraska Historic Buildings Survey for Red Willow County, Nebraska* (Madison, WI: Mead & Hunt, 2002), 10; James J. Sughrue, *Views of a College Town, 1886-1891, Bartley, Nebraska*, (Indianola, NE: Sughrue, 1986), 6-8.

Bartley Sales Barn and Livestock Facility

Red Willow County, Nebraska

**Name of Property**

**County and State**

in the 1870s, the meat processing industry had expanded at a rapid pace. Factors that contributed to its growth and industrialization included the expansion of railroad routes, the concentration of stockyards, meat processing facilities, and exchanges in urban centers, and the mechanization of slaughtering. For many years, railroad companies dominated the livestock transportation market. Cattlemen would drive or haul—first by wagon, later by truck—livestock to points where animals could be loaded onto rail cars and shipped to a stockyard. For cattlemen in western Nebraska and eastern Wyoming, this meant their product was bound for Omaha.<sup>18</sup> Reliance on the railroad, however, began to decrease as competition from an alternate surface transportation system increased.

Spanning the years 1914 to 1927, the mileage of rural roads in Nebraska increased by 17 percent.<sup>19</sup> As rural roadway networks continued to develop and improve, ranchers began using trucks for hauling livestock on short distances, either to a rail distribution point, an auction ring, or a smaller packer located in the interior of Nebraska. After World War I ended, the demand that the slaughtering of animals take place nearer to livestock production points was gaining traction within the industry.<sup>20</sup> Issues influencing the trend toward decentralization included, advances in refrigeration technology, the construction of more and better roads, the increase use of motor trucks for hauling, and the standardization and grading of meat products.<sup>21</sup> Smaller, regional packing plants located in Grand Island, North Platte, and Alliance offered cattlemen and ranchers shorter hauls without the shipping rates charged by the railroad.<sup>22</sup> In addition, auction rings and sales barns similar to Bartley's connected central-market packers directly with the producer insuring the source of the supply.

Soon after Bartley's first show held on November 1, 1919,<sup>23</sup> a hog farrowing barn, a cattle barn and a connector barn were added to the complex.<sup>24</sup> The addition of these buildings shows a willingness on the part of local breeders and farmers to diversify commodities that were bought and sold at the pavilion. Over the next several months, local swine and cattle breeders, such as the Moores and the Stilgebouers, were so successful in selling their product that a few national agricultural journals made note of it in their regional reports and referenced Bartley, Nebraska throughout the 1920-21 sale seasons.<sup>25</sup> In a review of some of the journals that reported information on livestock sales, the barn conducted between 50 and 60 shows during its peak operation as a sales pavilion.<sup>26</sup> The press coverage Bartley received from its sales helped individual breeders garner recognition while at the same time, it attracted more buyers into the area. By providing a boost to the local economy over a five-to-seven year period, the Bartley Sales Barn and Livestock Facility was significant in creating a commercial link between 'producer' and 'seller' within a rural network of farming communities where none previously existed.

Criterion C: Architecture

Architecturally significant, the sales barn, a distinctive feature among the group of buildings, represents a well-preserved example of octagonal barn construction in Nebraska and one that was part of a Midwest trend in barn construction that occurred in two phases. The first phase achieved prominence in the 1880s, and the second occurred c.1905-20.<sup>27</sup> Octagonal barns were prevalent during the first period while true round barns dominated the second. The second period saw "the introduction of light frame wall plate construction, and specialization of barn function. The adoption of light, or balloon,

<sup>18</sup> Nellie Snyder Yost, *The Call of the Range: The Story of the Nebraska Stock Growers Association*, (Denver: Sage Books, 1966), 310-312.

<sup>19</sup> U.S. Department of Commerce, *Statistical Abstract of the United States*, 1930. (Washington: Government Printing Office, 1930), 376.

<sup>20</sup> Rex Vance Call, *Wholesale Distribution of Meat and Meat Products, with Special Reference to Omaha, Nebraska, as a Meat Packing Center* (PhD diss., Ohio State University, 1955), 13.

<sup>21</sup> Rex Vance Call, *Wholesale Distribution of Meat and Meat Products, with Special Reference to Omaha, Nebraska, as a Meat Packing Center* (PhD diss., Ohio State University, 1955), 15.

<sup>22</sup> Nellie Snyder Yost, *The Call of the Range: The Story of the Nebraska Stock Growers Association*, (Denver: Sage Books, 1966), 312-313.

<sup>23</sup> Connie Jo Discoe, "Round Barn Thrived Briefly in Bartley," *McCook Daily Gazette* (McCook, NE), Wednesday, August 4, 1976, in RW01-023 Site File, Nebraska State Historic Preservation Office, and on Microfilm, M13g, Reel No. 170.

<sup>24</sup> "Nebraska Historic Sites Survey Form," Site File RW01-023. On file, Nebraska State Historic Preservation Office, Lincoln, NE.

<sup>25</sup> *American Hereford Journal* 11, no. 9-16 (1920), 140, 159, 310, 361.

<https://books.google.com/books?id=06c7AQAAAJ&pg=PP1#v=onepage&q&f=false>. Accessed February, 11, 2017; *American Swineherd* 38, (1921), 38, 86. <https://babel.hathitrust.org/cgi/pt?id=uc1.c2532096;view=1up;seq=1> Accessed February, 11, 2017; *Poland China Journal*, 6, no. 12 (1920), 226, 542. <https://books.google.com/books?id=Zrk5AQAAAJ&pg=PP1#v=onepage&q=Bartley,%20NE&f=false>. Accessed February 11, 2017.

<sup>26</sup> *Ibid.*

<sup>27</sup> Lowell J. Soike, *Without Right Angles: The Round Barns of Iowa*, (Des Moines, IA: Iowa State Historical Department, Office of Historic Preservation, 1983), 3.

Bartley Sales Barn and Livestock Facility

Red Willow County, Nebraska

**Name of Property**

**County and State**

frame construction allowed true-round shapes to be built (although polygonal shapes were still constructed), and most significantly allowed the loft floor and roof structures to be carried exclusively by the walls, or by the walls and the central silo.”<sup>28</sup> While the Bartley Sales Barn’s octagon shape suggests it may be from the earlier period, inspection of its internal components clearly display balloon framing; therefore its construction fits, technologically, in the second architecturally logical trend of ‘round’ barn construction in the Midwest. Furthermore, adapting the form for use as a livestock sales pavilion, built without a loft or silo, but with a monitor to light the interior, illustrates resourcefulness and engineering ingenuity. The diagonal braces at each corner may also be evidence of resourcefulness, indicating structural accommodations to the lack of a loft or silo. While the barn’s architect, builders, or carpenters remain unknown, it is clear the crafts people were aware of design and building plans circulating within the agricultural press, or through university agricultural experiment stations during the early twentieth century.<sup>29</sup>

A search of the Nebraska SHPO historic building inventory database shows that the Bartley Sales Barn is one of six octagon sales barns extant within the 11-county Republican Valley region of Nebraska. Of the six octagonal barns, four, including the Bartley Sales Barn, were either livestock businesses located in town or show pavilions located on fairgrounds. The Bartley Sales Barn is the only octagonal sales barn in Red Willow County.

---

<sup>28</sup> National Register of Historic Places, Frank Uehling Barn, (Uehling, Dodge County, Nebraska, ID#85001666), section 8.

<sup>29</sup> Keith A. Sculle and H. Wayne Price, “Barns of Nonorthogonal Plan,” in *Barns of the Midwest*, ed. Allen G. Noble et al (Athens: Ohio University Press, 1995), 191-192.

Bartley Sales Barn and Livestock Facility  
**Name of Property**

Red Willow County, Nebraska  
**County and State**

---

## 9. Major Bibliographic References

---

**Bibliography** (Insert bibliography here – cite the books, articles and other sources used in preparing this form.)

*American Hereford Journal* 11, no. 9-16 (1920)

<https://books.google.com/books?id=06c7AQAAMAAJ&pg=PP1#v=onepage&q&f=false>. Accessed February 11, 2017.

*American Swineherd* 38, (1921). <https://babel.hathitrust.org/cgi/pt?id=uc1.c2532096;view=1up;seq=1> Accessed February 11, 2017.

Call, Rex Vance. *Wholesale Distribution of Meat and Meat Products, with Special Reference to Omaha, Nebraska, as a Meat Packing Center*. PhD diss., Ohio State University, 1955.

County Atlas. *Plat Book of Red Willow County, NE*. 917.82/B64e/Jefferson. R. C. Booth, 1959. Archives, Nebraska State Historical Society.

Discoe, Connie Jo. "Round Barn Thrived Briefly in Bartley." *McCook Daily Gazette* (McCook, NE), July 2, 1976. [Microfilm] M13g, Reel No. 170.

Frudden, William E. *Farm Buildings: How to Build Them*. Charles City, IA: W.E. Frudden, 1916.

Gilkerson, Joni. National Register of Historic Places, *Couser Barn*, Laurel, Cedar County, Nebraska. National Register #86001714. [http://www.nebraskahistory.org/histpres/nebraska/cedar/CD00-012\\_Couser\\_Barn.pdf](http://www.nebraskahistory.org/histpres/nebraska/cedar/CD00-012_Couser_Barn.pdf). Accessed January 7, 2017.

Harsh, Lester. "Nebraska Historic Site Survey Form." *Date*, (unknown). In RW01-023 Site File. Nebraska State Historic Preservation Office. Lincoln, NE.

*Historic Context Report 08.06*. "Republican Valley General Farming, Cash Grain, and Livestock Production." On file, Nebraska State Historic Preservation Office, Lincoln, NE.

*Historic Contexts in Nebraska*. "Temporal Periods." On file, Nebraska State Historic Preservation Office, Lincoln, NE.

Hoffmeister, Mrs. Charles. "Bartley's Round Barn 1 of 40." *McCook Daily Gazette* (McCook, NE), February 14, 1968.

*Inter-Ocean*, May 9, 1918 to December 4, 1919; December 11, 1919 to June 9, 1920; June 16, 1921 to March 8, 1923, [Microfilm] B285i, Reel Nos. 5, 6, and 7.

*Indianola Reporter*, September, 28, 1916 to November 13, 1919; November 20, 1919 to January 18, 1923; January 25, 1923 to April 8, 1926, [Microfilm] M13cr, Reel Nos. 14-193, 14-194, 14-199.

NSHS Manuscript Collections, RG3913.AM, CB&QRR-Lines West, Series 3, Book 14.

Murphy, David. National Register of Historic Places, *Frank Uehling Barn*, Uehling, Dodge County, Nebraska. National Register #85001666. <http://www.nebraskahistory.org/histpres/nebraska/dodge/DD00-049-Uehling-Barn.pdf>. Accessed January 7, 2017.

NeSHPO. Nebraska Historic Resources Survey & Inventory (NeHRSI). <http://histpres.maps.arcgis.com/>. Accessed December 2016, January and February 2017

Bartley Sales Barn and Livestock Facility

Red Willow County, Nebraska

**Name of Property**

**County and State**

*Poland China Journal*, 6, no. 12 (1920).

<https://books.google.com/books?id=Zrk5AQAAMAAJ&pg=PP1#v=onepage&q=Bartley,%20NE&f=false>. Accessed February 11, 2017.

Property Records. Red Will Tax Assessor's Office online. <https://redwillow.gisworkshop.com/>. Accessed November and December 2016; January and February 2017.

*Red Willow County Atlas*. "Plat of Bartley." Chicago: Geo. A. Ogle & Co., Publishers and Engravers, 1905. Digitized copy available at Nebraska State Historical Society's Archeology Office.

Site File RW01-023. On file, Nebraska State Historic Preservation Office, Lincoln, NE.

Soike, Lowell J. *Without Right Angles: The Round Barns of Iowa*. Des Moines, Iowa: Iowa State Historical Department, Office of Historic Preservation, 1983.

Sculle, Keith A. and H. Wayne Price. "Barns of Nonorthogonal Plan." In *Barns of the Midwest*, edited by Allen G. Noble and Hubert G.H. Wilhelm, 188-212. Athens: Ohio University Press, 1995.

Sughrue, James J. *Views of a College Town, 1886-1891, Bartley, Nebraska*. Indianola, NE: Sughrue, 1986.

U.S. Bureau of Land Management Land Patents. <http://www.glorerecords.blm.gov/>. Accessed January 28, 2017.

U.S. Department of Commerce, Bureau of the Census-Report of the Thirteenth Census. *Vol. VII-Agriculture, 1909-1910 Reports by States with Statistics for Counties: Nebraska, Wyoming, Alaska, Hawaii, Porto Rico*. Washington: Government Printing Office, 1913.

U.S. Department of Commerce, Bureau of the Census-Report of the Fourteenth Census. *Vol. VI-Agriculture, 1919-1920 Reports by States with Statistics for Counties: Nebraska*. Washington: Government Printing Office, 1922.

U.S. Department of Commerce, Bureau of Foreign and Domestic Commerce. *Public Roads and Motor Vehicles*. Washington: Government Printing Office, 1930.

U.S. Department of Commerce, United State Census of Agriculture, 1925. *Reports for States with Statistics for Counties and a Summary for the United States. Part I – The Northern States*. Washington: Government Printing Office, 1927.

U.S. Department of Interior, National Park Service, *Technical Preservation Brief #20: The Preservation of Historic Barns*. Michael J. Auer. 1989.

Village Town Meeting, Board Minutes, 1887-1951 (Vols. I-II-III). Government Records-RG-364.51, Bartley, Red Willow County, NE. State Archives and Manuscript Division, Nebraska State Historical Society.

Wallace, Henry C. "The Farmers and the Railroads." *Proceedings of the Academy of Political Science in the City of New York*, 10, no. 1 (July 1922): 63-76.

Welsch, Roger L. "Nebraska's Round Barns," *Nebraska History* 51:1 (Spring, 1970), 49-92.

Yost, Nellie Snyder. *The Call of the Range: The Story of the Nebraska Stock Growers Association*. Denver: Sage Books, 1966.

Bartley Sales Barn and Livestock Facility  
**Name of Property**

Red Willow County, Nebraska  
**County and State**

**Previous documentation on file (NPS):**

- preliminary determination of individual listing (36 CFR 67 has been requested)
- previously listed in the National Register
- previously determined eligible by the National Register
- designated a National Historic Landmark
- recorded by Historic American Buildings Survey #
- recorded by Historic American Engineering Record #
- recorded by Historic American Landscape Survey #

**Primary location of additional data:**

- State Historic Preservation Office
- Other State agency
- Federal agency
- Local government
- University
- Other (Name of repository)

Historic Resources Survey Number (if assigned): RW01-023

**10. Geographical Data**

Acreeage of property Less than an acre USGS Quadrangle Bartley Quadrangle, Nebraska  
7.5-Minute Series

**Latitude/Longitude Coordinates**

- Datum if other than WGS84: \_\_\_\_\_
- |    |          |                  |           |                    |
|----|----------|------------------|-----------|--------------------|
| 1. | Latitude | <u>40.250670</u> | Longitude | <u>-100.306388</u> |
| 2. | Latitude | _____            | Longitude | _____              |
| 3. | Latitude | _____            | Longitude | _____              |
| 4. | Latitude | _____            | Longitude | _____              |

**Verbal Boundary Description** (Describe the boundaries of the property.)

A rectangular-shaped parcel with the following legal description:  
Original Bartley Block 70, Lots 1 to 5. SW¼ of the SW¼, Section 6, Township 3, Range 26 West.

**Boundary Justification** (Explain why the boundaries were selected.)

This parcel represents the original location of the sales barn and livestock facility since the pavilion's construction in 1919.

**11. Form Prepared By**

name/title Diane Laffin/Preservation Associate  
organization Nebraska State Historical Society date March 28, 2018  
street & number 5050 N. 32<sup>nd</sup> Avenue telephone 402-471-4755  
city or town Lincoln state NE zip code 68504  
email [Diane.laffin@nebraska.gov](mailto:Diane.laffin@nebraska.gov)

Bartley Sales Barn and Livestock Facility  
**Name of Property**

Red Willow County, Nebraska  
**County and State**

### Additional Documentation

Submit the following items with the completed form:

- **Maps:** A **USGS map** or equivalent (7.5 or 15 minute series) indicating the property's location.
- **Sketch map** for historic districts and properties having large acreage or numerous resources. Key all photographs to map.
- **Additional items:** (Check with the SHPO for any additional items.)

### Photographs

Submit clear and descriptive photographs. The size of each image must be 1600x1200 pixels (minimum), 3000x2000 preferred, at 300 ppi (pixels per inch) or larger. Key all photographs to the sketch map. Each photograph must be numbered and that number must correspond to the photograph number on the photo log. For simplicity, the name of the photographer, photo date, etc. may be listed once on the photograph log and does not need to be labeled on every photograph.

### Photo Log

Name of Property Bartley Sales Barn and Livestock Facility

City or Vicinity Bartley County Red Willow State Nebraska

Photographers Diane L. Laffin / Greg Hoffman (owner) Date Photographed 1-26-2015/6-29-2016/8-2017

Description of Photograph(s) and number, include description of view indicating direction of camera.

**Photo 1: South façade (right) of sales barn, hog farrowing barn (left), camera facing north.**

**Photo 2: Close-up of north façade, camera facing south.**

**Photo 3: Northwest façade of sales barn (left), connector barn (center), cattle barn (right), camera facing southwest.**

**Photo 4: Internal shot of south wall, camera facing southeast.**

**Photo 5: Support beams of octagonal monitor, camera facing up, and photographer facing north.**

**Photo 6: Door of north entryway into hog farrowing barn, camera facing south.**

**Photo 7: West and north elevations of the cattle barn, camera facing east.**

**Photo 8: West and south elevations of the cattle barn, camera facing east.**

**Photo 9: West and south elevations of the farrowing barn, camera facing northeast.**

**Photo 10: Gable-covered breezeway south of the connector barn, camera facing west.**

**Photo 11: Internal view of the cattle barn, south interior wall, camera facing southwest.**

**Photo 12: Foundation stabilization, south elevation of the cattle barn, camera facing northeast.**

Bartley Sales Barn and Livestock Facility  
**Name of Property**

Red Willow County, Nebraska  
**County and State**

**Bartley Sales Barn Complex, Bartley, NE**    Property Boundary .....  
Zone 14T  
Easting: 388886.76    Northing: 4456388.47



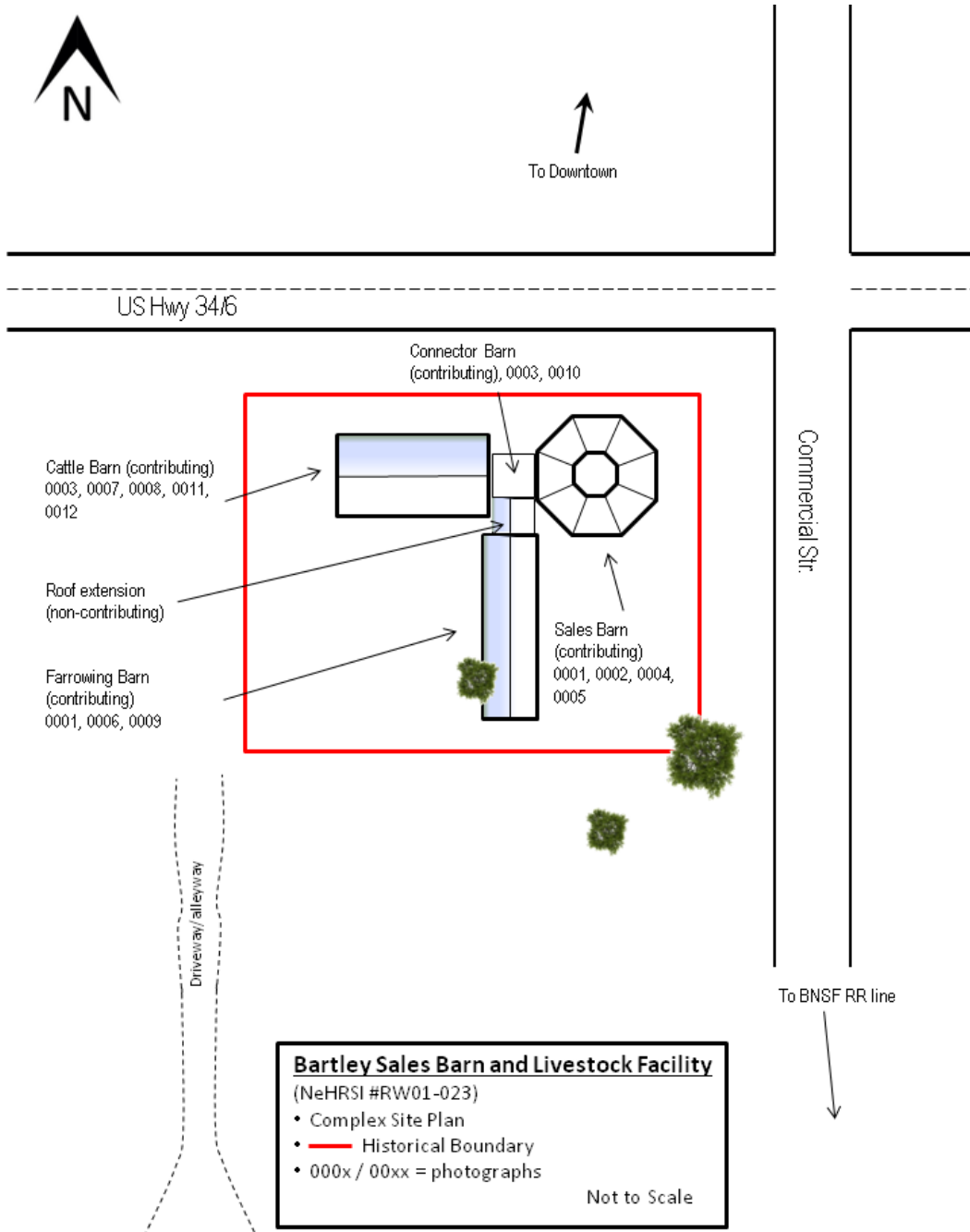


Bartley Sales Barn and Livestock Facility  
**Name of Property**

Red Willow County, Nebraska  
**County and State**

**Bartley Sales Barn Complex, Bartley, NE**

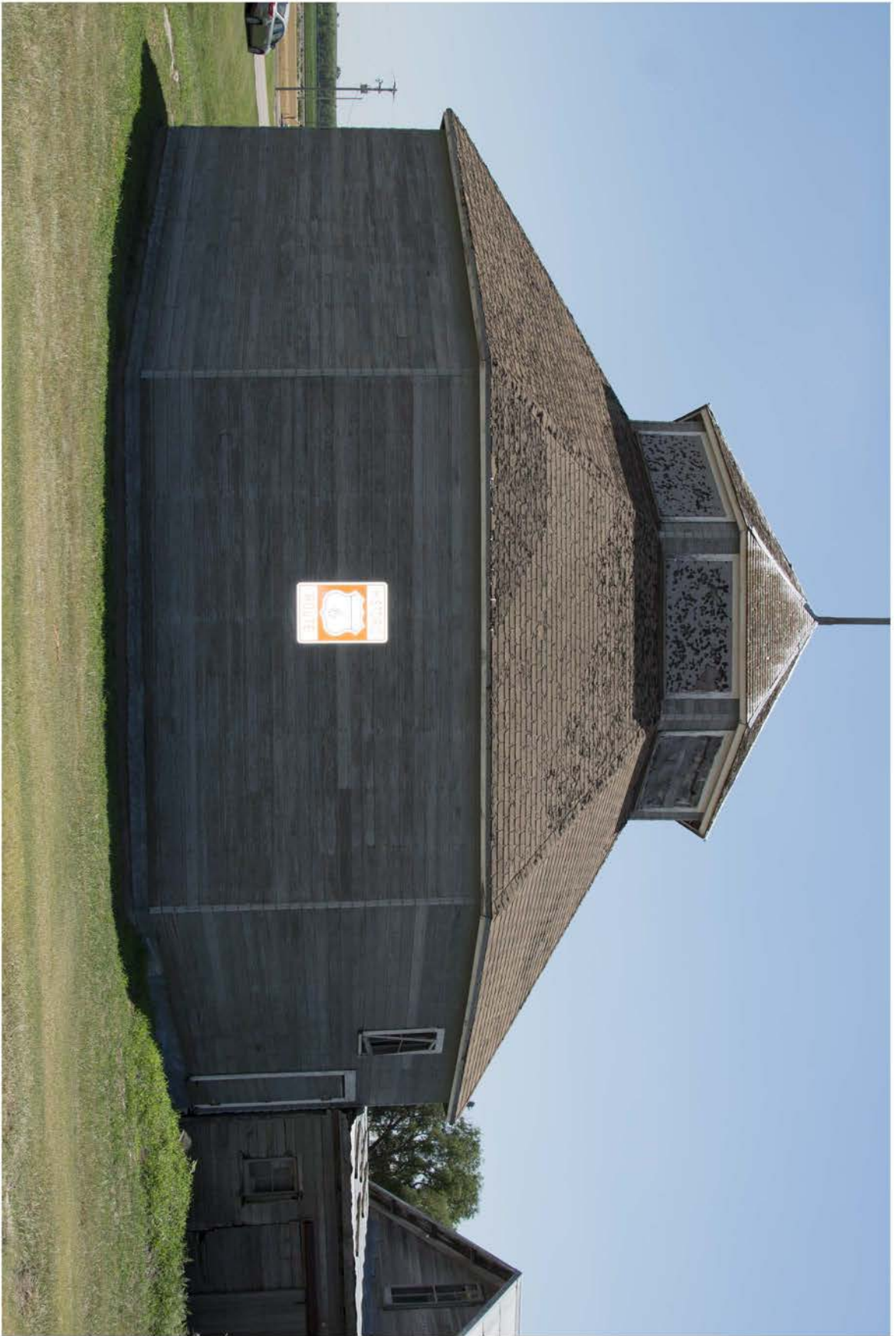
**Sketch Map/Site Plan**



**Paperwork Reduction Act Statement:** This information is being collected for applications to the National Register of Historic Places to nominate properties for listing or determine eligibility for listing, to list properties, and to amend existing listings. Response to this request is required to obtain a benefit in accordance with the National Historic Preservation Act, as amended (16 U.S.C.460 et seq.).

**Estimated Burden Statement:** Public reporting burden for this form is estimated to average 100 hours per response including time for reviewing instructions, gathering and maintaining data, and completing and reviewing the form. Direct comments regarding this burden estimate or any aspect of this form to the Office of Planning and Performance Management, U.S. Dept. of the Interior, 1849 C. Street, NW, Washington, DC.



























National Register of Historic Places  
Memo to File

# Correspondence

The Correspondence consists of communications from (and possibly to) the nominating authority, notes from the staff of the National Register of Historic Places, and/or other material the National Register of Historic Places received associated with the property.

Correspondence may also include information from other sources, drafts of the nomination, letters of support or objection, memorandums, and ephemera which document the efforts to recognize the property.

UNITED STATES DEPARTMENT OF THE INTERIOR  
NATIONAL PARK SERVICE

NATIONAL REGISTER OF HISTORIC PLACES  
EVALUATION/RETURN SHEET

Requested Action:

Property Name:

Multiple Name:

State & County:

Date Received: 5/30/2018      Date of Pending List:      Date of 16th Day:      Date of 45th Day: 7/16/2018      Date of Weekly List:

Reference number:

Nominator:

Reason For Review:

- |  |  |   |
|--|--|---|
| <input type="checkbox"/> Appeal                  | <input type="checkbox"/> PDIL            | <input type="checkbox"/> Text/Data Issue    |
| <input type="checkbox"/> SHPO Request            | <input type="checkbox"/> Landscape       | <input type="checkbox"/> Photo              |
| <input type="checkbox"/> Waiver                  | <input type="checkbox"/> National        | <input type="checkbox"/> Map/Boundary       |
| <input checked="" type="checkbox"/> Resubmission | <input type="checkbox"/> Mobile Resource | <input type="checkbox"/> Period             |
| <input type="checkbox"/> Other                   | <input type="checkbox"/> TCP             | <input type="checkbox"/> Less than 50 years |
|  | <input type="checkbox"/> CLG             |   |

Accept       Return       Reject      6/25/2018 Date

Abstract/Summary Comments:

Recommendation/ Criteria:

Reviewer Jim Gabbert      Discipline Historian

Telephone (202)354-2275      Date \_\_\_\_\_

DOCUMENTATION:    see attached comments : No    see attached SLR : No

If a nomination is returned to the nomination authority, the nomination is no longer under consideration by the National Park Service.



June 5, 2017

Ms. Alexis Abernathy  
NPS – National Register of Historic Places  
Mail Stop 7228  
1849 C St, NW  
Washington, D.C. 20240

RE: Bartley Sales Barn NRHP Nomination

Dear Ms. Abernathy,

Enclosed is the complete nomination packet for the Bartley Sales Barn in Red Willow County, Nebraska. The enclosed contents are as follows:

1. The signed first page of the Bartley Sales Barn nomination
2. One archival disk with the true and correct copy of the nomination for the Bartley Sales Barn to the National Register of Historic Places in pdf format.
3. One archival disks with the photographs for the Bartley Sales Barn nomination.

If you have any questions regarding the submitted materials, please feel free to contact me at the number of email address below.

Sincerely,

A handwritten signature in blue ink that reads "Jill E. Dolberg".

Jill E. Dolberg  
Deputy State Historic Preservation Officer  
Nebraska State Historic Preservation Office

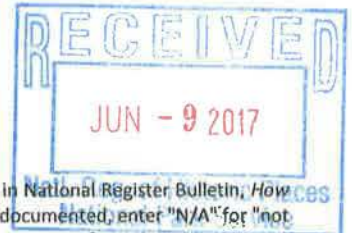
Phone: (402) 471-4773  
Fax: (402) 471-3100  
[Jill.dolberg@nebraska.gov](mailto:Jill.dolberg@nebraska.gov)

Enclosures: 2 disks and one page

1500 R Street  
PO Box 82554  
Lincoln, NE 68501-2554  
p: (800) 833-6747  
(402) 471-3270  
f: (402) 471-3100  
[www.nebraskahistory.org](http://www.nebraskahistory.org)



United States Department of the Interior  
National Park Service



# National Register of Historic Places Registration Form

This form is for use in nominating or requesting determinations for individual properties and districts. See instructions in National Register Bulletin, *How to Complete the National Register of Historic Places Registration Form*. If any item does not apply to the property being documented, enter "N/A" for "not applicable." For functions, architectural classification, materials, and areas of significance, enter only categories and subcategories from the instructions.

## 1. Name of Property

Historic name Bartley Sales Barn

Other names/site number The Round Sales Barn; Bartley Sales Pavilion; Bartley Community Sales Barn; Pioneer Sale Barn / RW01-023

Name of related multiple property listing N/A  
(Enter "N/A" if property is not part of a multiple property listing)

## 2. Location

Street & Number Southwest corner of U.S. Hwy 6/34 (Maple Street) and Commercial Street

City or town Bartley State Nebraska County Red Willow

Not for publication  Vicinity  N/A

## 3. State/Federal Agency Certification

As the designated authority under the National Historic Preservation Act, as amended, I hereby certify that this  nomination  request for determination of eligibility meets the documentation standards for registering properties in the National Register of Historic Places and meets the procedural and professional requirements set forth in 36 CFR Part 60.

In my opinion, the property  meets  does not meet the National Register Criteria. I recommend that this property be considered significant at the following level(s) of significance:  national  statewide  local

Applicable National Register Criteria:  A  B  C  D

[Signature] SHPO/Director  
Signature of certifying official/Title:  
Nebraska State Historical Society  
State or Federal agency/bureau or Tribal Government

5/31/17  
Date

In my opinion, the property  meets  does not meet the National Register criteria.

\_\_\_\_\_  
Signature of Commenting Official  
\_\_\_\_\_  
Date  
\_\_\_\_\_  
Title  
\_\_\_\_\_  
State of Federal agency/bureau or Tribal Government

## 4. National Park Service Certification

I, hereby, certify that this property is:  
 entered in the National Register.  
 determined eligible for the National Register.  
 determined not eligible for the National Register.  
 removed from the National Register.  
 other, (explain): \_\_\_\_\_

\_\_\_\_\_  
Signature of Keeper  
\_\_\_\_\_  
Date of Action

Bartley Sales Barn  
**Name of Property**

Red Willow County, Nebraska  
**County and State**

**5. Classification**

**Ownership of Property** (Check as many boxes as apply)

- Private
- Public-local
- Public-state
- Public-federal

**Category of Property** (Check only one box)

- Building(s)
- District
- Site
- Structure
- Object

**Number of Resources within Property** (Do not include previously listed resources in the count.)

Contributing	Noncontributing	
1	3	Buildings
_____	_____	Sites
_____	_____	Structures
_____	_____	Objects
1	3	Total

Number of contributing resources previously listed in the National Register N/A

**6. Function or Use**

**Historic Functions** (Enter categories from instructions.)

AGRICULTURE/SUBSISTENCE/animal facility  
COMMERCE  
SOCIAL  
\_\_\_\_\_  
\_\_\_\_\_  
\_\_\_\_\_  
\_\_\_\_\_

**Current Functions** (Enter categories from instructions.)

WORK IN PROGRESS  
RECREATION AND CULTURE/theater (anticipated)  
COMMERCE/specialty stores (anticipated)  
\_\_\_\_\_  
\_\_\_\_\_  
\_\_\_\_\_  
\_\_\_\_\_

**7. Description**

**Architectural Classification** (Enter categories from instructions.)

OTHER: octagonal barn  
\_\_\_\_\_  
\_\_\_\_\_  
\_\_\_\_\_

**Materials** (enter categories from instructions.)  
Principal exterior materials of the property:

Board-formed poured concrete foundation, novelty wood siding, asphalt shingle roof.

Bartley Sales Barn

Red Willow County, Nebraska

**Name of Property****County and State****Description**

**Summary Paragraph** (Briefly describe the general characteristics of the property, such as its location, type, style, method of construction, setting, size, and significant features. Indicate whether the property has historic integrity.)

The prominent sales barn, an important local landmark, is situated along U.S Highway 6/34 within the corporate limits of Bartley. Located in the north and east portion of the parcel, the Bartley Sales Barn is an octagonally-shaped sales pavilion built of frame construction and capped by an octagonal monitor. The foundation is board-formed, poured concrete. Constructed in 1919, its eight sides measure 17-feet five-inches each and are capped with a medium-pitched roof that builds to the monitor. An outdoor corral, south from the sales barn, once occupied this area of the parcel. It is now vacant and covered in grass. Original mullions from the fenestrations in the monitor, the original doors, as well as original wood for the auction ring and the grandstand seating, have been temporarily removed while the current owner, Mr. Greg Hoffman, a long-time resident of the area, restores the barn for adaptive re-use. The barn is one of six octagon barns remaining in the 11-county Republican Valley Region of Nebraska,<sup>1</sup> and it is the only octagonal sales barn in Red Willow County. Even in its current condition, the sales barn retains the integrity of location, setting, design, workmanship, materials, feeling and association, and conveys the historic associations for which it is significant.

**Narrative Description** (Describe the historic and current physical appearance and condition of the property. Describe contributing and noncontributing resources if applicable.)

Built of wood-frame construction, the barn is octagonal in shape, each wall measuring 17-feet five-inches wide and 12-feet three-and-a-half inches high. The width of the barn from the west wall to the east wall measures 43-feet six-inches. An octagonally-shaped monitor caps the roof. The monitor walls measure five-feet high and eight-feet wide.<sup>2</sup> Historically, the monitor had trios of four-pane casement windows. Currently, the window fenestrations are boarded while the original frames and mullions are being restored.

The rafters of the main hip roof, below the monitor, are supported at mid-span with purlins, which in turn are supported at mid-span by posts. The roof and walls are tied together and reinforced with a simple diagonal, truss-like construction at each corner of the building. These probably serve to not only reinforce the roof at the hip rafter, but to brace the whole structure surrounding the large open interior against lateral loading as well.

The foundation is board-formed, poured concrete. Base metal flashing is exposed at the sill along the entire perimeter. The barn, including the monitor, reaches an approximate height of 45 feet above the ground.

The unsheathed walls are sided with horizontal shiplap boards, or novelty siding, the corners of which are sealed with sheet metal corner tabs. Doorway arrangements are functional. Three openings, located on the northwest, southwest, and east sides of the barn were originally equipped with wood doors. An interesting feature of the sale barn, these are six-light, three-panel (vertical) doors with large strap hinges. They have been replaced with sliding doors, but, similar to the windows in the monitor, the doors have been temporarily removed while restoration efforts proceed. Two main level walls with doors—the northwest and the southwest—are further punctured with one minuscule window opening located above each entryway. Historically, the windows in the monitor, as well as the three openings, were the only means by which the maximum amount of natural light could enter the space for the auctions. The light-colored plywood sheathing in the roof shows through gaps in the original spaced sheathing. Spaced sheathing was used with wood shingles to allow them to dry evenly after rains and avoid curling. Wood shingle deterioration likely prompted the application of asphalt shingles in 1986.<sup>3</sup> Inside, the dirt auction floor is entirely open except for eight wood posts that support the monitor, and the eight at the mid-span of the purlins. Prior to restoration efforts, the barn had ten rows of wood-plank stadium seating that

<sup>1</sup> The 11-county Republican Valley Region of Nebraska includes the following counties: Franklin, Frontier, Furnas, Gosper, Hayes, Harlan, Hitchcock, Nuckolls, Red Willow, Thayer, and Webster.

<sup>2</sup> Greg Hoffman, email message containing measurements of the barn to the author, March 12, 2017.

<sup>3</sup> "Bartley sale barn's story has 8 sides, many asides," *The Lincoln Journal* (Lincoln, NE), July 24, 1986.

Bartley Sales Barn

Red Willow County, Nebraska

**Name of Property**

**County and State**

surrounded an octagonally-shaped dirt sale floor cordoned off with three-foot-high barrier boards as well as eight wood posts, drilled and threaded with rope or wire.

Three other agricultural buildings, a hog farrowing barn, a beef cattle barn, and a small connector shed, do not retain sufficient historic integrity to consider the complex as a whole for listing in the National Register. The historic integrity of the sales barn is good. Most of the primary materials have been retained and will be returned to their original locations once restoration is complete.

Returned

Bartley Sales Barn  
Name of Property

Red Willow County, Nebraska  
County and State

### 8. Statement of Significance

#### Applicable National Register Criteria

(Mark "X" in one or more boxes for the criteria qualifying the property for National Register listing.)

- A** Property is associated with events that have made a significant contribution to the broad patterns of our history.
- B** Property is associated with the lives of persons significant in our past.
- C** Property embodies the distinctive characteristics of a type, period, or method of construction or represents the work of a master, or possesses high artistic values, or represents a significant and distinguishable entity whose components lack individual distinction.
- D** Property has yielded, or is likely to yield, information important in prehistory or history.

#### Criteria Considerations

(Mark "X" in all the boxes that apply.)

Property is:

- A** Owned by a religious institution or used for religious purposes.
- B** Removed from its original location.
- C** A birthplace or a grave.
- D** A cemetery.  
A reconstructed building, object, or structure.
- E** A commemorative property.
- F** Less than 50 years of age or achieved significance within the past 50 years.

#### Areas of Significance

(Enter categories from instructions.)

ARCHITECTURE

AGRICULTURE

COMMERCE

SOCIAL HISTORY

#### Period of Significance

1919-1921

1921-1964

#### Significant Dates

1919 - Construction

1919-1921 - Agriculture/Commerce

1921-1964 - Agriculture/Social History

#### Significant Person

(Complete if Criterion B is marked above.)

N/A

#### Cultural Affiliation

N/A

#### Architect/Builder

N/A

Bartley Sales Barn

Red Willow County, Nebraska

Name of Property

County and State

**Statement of Significance Summary Paragraph** (Provide a summary paragraph that includes level of significance, applicable criteria, justification for the period of significance, and any applicable criteria considerations.)

Eligible under Criterion C: Architecture, the Bartley Sales Barn is significant at the state level as one of an increasingly limited number of non-orthogonal barns in Nebraska. It is also an example of the second phase of such construction in the state, and one that mirrored regional agricultural building trends occurring in the Midwest during the years 1905 to 1920.<sup>4</sup> In form, the barn continues to reflect the origins of its plan and accurately conveys its distinct agricultural architectural style.

The Bartley Sales Barn is eligible at the state level under Criterion A: Agriculture as an example of the Republican Valley Region's history in hog and beef production from 1919 through the 1964 when the last private owner retired. Through its livestock auction/sales of Poland China hogs, and later, Hereford beef cattle, area farmers willingly participated in early twentieth century scientific agricultural trends in breeding selection and cattle raising methods, as well as labor-saving mechanization.

Eligible, too, under Criterion A: Commerce at the local level, the Bartley Sales Barn came into existence through the progressive efforts of a group of local farmers and breeders who wanted to find new markets and increase demand for their products. For a brief time—1919 through 1921—the Bartley Sales Barn was the only local nexus between buyer and seller in cattle and livestock trading.

Lastly, the Bartley Sales Barn is eligible at the local level under Criterion A: Social History. Once the weekly livestock shows ceased in the early 1920s, Bartley and the broader surrounding rural community, used the barn for a wide variety of cultural and community events up to the early 1960s.<sup>5</sup>

The period of significance is derived from the barn's construction date of 1919 to approximately 1964 when that last livestock farmer retired and all of the buildings on the property stopped being used.

**Narrative Statement of Significance** (Provide at least one paragraph for each area of significance.)

Set in the northeast quarter of Red Willow County, Bartley is part of the larger 11-county region of the Republican River Valley and smaller portions of the Loess Plain area. Upland soils are fertile while the lowlands remain productive due to close proximity to the Republican River. The town sits on a bluff north of the Republican River surrounded by land patented in the 1870s.<sup>6</sup> By the mid-1880s, Reverend Allen Bartley, the town's energetic founder, directed the platting of 80 city blocks for his fledging community. Incorporation followed in 1887<sup>7</sup> shortly after surveying completed. The earliest available

<sup>4</sup> National Register of Historic Places, *Frank Uehling Barn*, (Uehling, Dodge County, Nebraska, ID#85001666), section 8 <http://www.nebraskahistory.org/histpres/nebraska/dodge/DD00-049-Uehling-Barn.pdf>. Accessed January 7, 2017.; National Register of Historic Places, *Couser Barn*, (Laurel, Cedar County, Nebraska, ID#86001714), section 8. [http://www.nebraskahistory.org/histpres/nebraska/cedar/CD00-012\\_Couser\\_Barn.pdf](http://www.nebraskahistory.org/histpres/nebraska/cedar/CD00-012_Couser_Barn.pdf). Accessed January 7, 2017.

<sup>5</sup> Mrs. Charles Hoffmeister, "Bartley's Round Barn 1 of 40," *McCook Daily Gazette* (McCook, NE), February 14, 1968.

<sup>6</sup> *1860-1954 Tract Books Index*, "John A. Johnson," reels 20 and 25; "Frank Larson," reels 20 and 25. <http://www.nebraskahistory.org/databases/tractbooks.shtml>. Accessed January 28, 2017. The Nebraska Homestead Records, available online at <https://www.fold3.com/>, at the University of Nebraska-Lincoln Love Library, and at Homestead National Monument, contains abbreviated information on Red Willow County. Section 6, Township 3, Range 26 West is not currently among the group of documents scanned in by the National Archives; *United States, Bureau of Land Management Land Patents*, John A. Johnson, NE Vol 35, Certificate No. 107, Page 54, June 20, 1874; also, Frank Larson, NE Vol 35, Certificate No. 112, Page 105, March 15, 1875. <http://www.glorerecords.blm.gov/> Accessed January 28, 2017.

<sup>7</sup> *Nebraska Historic Buildings Survey for Red Willow County, Nebraska* (Madison, WI: Mead & Hunt, 2002), 10.

Bartley Sales Barn

Red Willow County, Nebraska

**Name of Property**

**County and State**

atlas of Bartley dated 1905 shows Lots 1-5 of Block 70—the sales barn current and original location—were unoccupied at the time.<sup>8</sup>

Criterion C: Architecture

Architecturally significant, the Bartley Sales Barn represents a well-preserved example of non-orthogonal barn construction in Nebraska and one that was part of a Midwest trend in barn construction which occurred in two phases. The first phase achieved prominence in the 1880s, and the second occurred during the years c. 1905-20.<sup>9</sup> Octagonal barns were prevalent during the first period while true round barns dominated the second. The second period saw, according to D. Murphy in his *Frank Uehling Barn* National Register nomination, “. . . the introduction of light frame wall plate construction, and specialization of barn function. The adoption of light, or balloon, frame construction allowed true-round shapes to be built (although polygonal shapes were still constructed), and most significantly allowed the loft floor and roof structures to be carried exclusively by the walls, or by the walls and the central silo.”<sup>10</sup> While the Bartley Sales Barn’s octagon shape suggests it may be from the *earlier* period, inspection of its internal components clearly display balloon framing; therefore its construction fits, technologically, in the second architecturally logical trend of ‘round’ barn construction in the Midwest. Furthermore, adapting the form for use as a livestock sales pavilion, built without a loft or silo, but with a monitor to light the interior, illustrates resourcefulness and engineering ingenuity. The diagonal braces at each corner may also be evidence of resourcefulness, indicating structural accommodations to the lack of a loft or silo. The barn’s architect, builders, or carpenters remain unknown. Whoever they were, it is clear the crafts people were aware of design and building plans circulating within the agricultural press, or through university agricultural experiment stations during the early twentieth century.<sup>11</sup>

A search of the Nebraska SHPO historic building inventory database shows that the Bartley Sales Barn is one of six octagon sale barns extant within the 11-county Republican Valley Region of Nebraska. Of the six octagonal barns, four, including the Bartley Sales Barn, were either livestock businesses located in town or show pavilions located on fairgrounds. The Bartley Sales Barn is the only octagonal sales barn in Red Willow County.

Criterion A: Agriculture

Agriculture in the Republican Valley Region did not develop fully into a cash grain and livestock production area until the first decade of the twentieth century. Prior to that, the lack of dependable rainfall in this region forced many early settlers to leave Nebraska. There also existed a general lack of understanding as to how to best cultivate the semi-arid land in order to make it more productive. Corn was the crop grown because it was cheap to produce. Farms were subsistence-based, and the lack of adequate transportation systems made most farm work labor-intensive. Farmers and ranchers in the Republican Valley began to take greater notice of these issues once scientific developments and mechanization proved pragmatically useful. Labor-saving farm implements, refrigerated railcars, livestock selection and breeding practices, as well as crop rotation—winter wheat, oats, and alfalfa—coalesced and produced greater yields and higher profits. In particular, alfalfa proved very useful: it grew easily in the alluvial soils of the Republican River Valley; it was cheap; and it made good fodder

<sup>8</sup> *Red Willow County Atlas*, “Plat of Bartley,” (Chicago: Geo. A. Ogle & Co., Publishers and Engravers, 1905), 56. Digitized copy available at Nebraska State Historical Society’s Archeology Office.

<sup>9</sup> Lowell J. Soike, *Without Right Angles: The Round Barns of Iowa*, (Des Moines, IA: Iowa State Historical Department, Office of Historic Preservation, 1983), 3.

<sup>10</sup> National Register of Historic Places, Frank Uehling Barn, (Uehling, Dodge County, Nebraska, ID#85001666), section 8.

<sup>11</sup> Keith A. Sculle and H. Wayne Price, “Barns of Nonorthogonal Plan,” in *Barns of the Midwest*, ed. Allen G. Noble et al (Athens: Ohio University Press, 1995), 191-192.

<sup>12</sup> The 11-county Republican Valley Region of Nebraska includes the following counties: Franklin, Frontier, Furnas, Gosper, Hayes, Harlan, Hitchcock, Nuckolls, Red Willow, Thayer, and Webster.

Bartley Sales Barn

Red Willow County, Nebraska

**Name of Property**

**County and State**

for cattle.<sup>13</sup> Following broader national trends in agriculture, farms in this region increasingly focused their operations on livestock production. At first, swine breeding and production became popular among farmers because it was highly profitable while beef cattle production gained traction only after hog prices fell dramatically in the early 1920s. Except for the farm crisis of the 1930s, livestock and cash grain production trends stabilized during the latter half of the period of significance, 1919-1964.

Criterion A: Commerce

In the first years after Bartley's incorporation, Mallalieu University was the town's main economic anchor and the reason for much of its early prosperity.<sup>14</sup> After the university closed in 1889,<sup>15</sup> community leaders persistently looked for other sources of revenue to grow and diversify Bartley's economy. A major development occurred in 1890 when its founder, Rev. Allen Bartley urged the railroad to build a spur line into town. This successful venture established a much needed transportation link to Bartley and one that attracted more settlers, as well as new businesses into the area. Another development that provided a boost to the local economy was the construction of the Bartley Sales Barn.

Nebraska's agricultural sector had benefitted greatly from the irregular market demands created during and after World War I. Realizing these markets had permanently vanished, local swine and cattle breeders and other business people rallied around the common economic goal of constructing a livestock sales barn. The result was the creation of a stock company in 1919 called the Bartley Sale Pavilion Company,<sup>16</sup> an entity tasked with raising half of the \$10,000 needed to fund the building's construction. With a railroad line already in place, it seemed reasonable to this group that a sales barn could provide the final missing link connecting livestock sellers to buyers in new markets. Prior to this, livestock shows took place sporadically on local farms and ranches at the request of the owner. This area of the state, however, had no other sales barn nearby for over 60 miles.<sup>17</sup> The money for construction was quickly raised and Bartley had its first show on November 1, 1919.<sup>18</sup>

Over the next several months, local swine and cattle breeders, such as the Moores and the Stilgebouers for example, were so successful that a few national agricultural journals made note of it in their regional reports and referenced Bartley, Nebraska throughout the 1919-21 sale seasons.<sup>19</sup> In a review of some of the journals that reported information on livestock sales, the Bartley Sales Barn conducted between 50 and 60 shows during its operation as a sales pavilion.<sup>20</sup> The press coverage Bartley received from its sales helped individual breeders garner recognition while it simultaneously lured more buyers into the area. Without the sales barn, further agricultural commercial development would have remained stagnant.

<sup>13</sup> *Historic Context Report 08.06*, "Republican Valley General Farming, Cash Grain, and Livestock Production," (On file, Nebraska State Historic Preservation Office, Lincoln, NE.), 6-7; *Historic Contexts in Nebraska*, "Temporal Periods" (On file, Nebraska State Historic Preservation Office, Lincoln, NE.), 9-14.

<sup>14</sup> *Nebraska Historic Buildings Survey for Red Willow County, Nebraska* (Madison, WI: Mead & Hunt, 2002), 10.

<sup>15</sup> *Ibid.*

<sup>16</sup> Connie Jo Discoe, "Round Barn Thrived Briefly in Bartley," *Newspaper Title and Date* (unknown), (In RW01-023 Site File, Nebraska State Historic Preservation Office.

<sup>17</sup> Nebraska Historic Resources Survey & Inventory (NeHRSI), online at <http://histpres.maps.arcgis.com>. Accessed December 2016, January and February 2017.

<sup>18</sup> Connie Jo Discoe, "Round Barn Thrived Briefly in Bartley," *Newspaper Title and Date* (unknown), (In RW01-023 Site File, Nebraska State Historic Preservation Office.

<sup>19</sup> *American Hereford Journal* 11, no. 9-16 (1920), 140, 159, 310, 361. <https://books.google.com/books?id=06c7AQAAAJ&pg=PP1#v=onepage&q&f=false>. Accessed February, 11, 2017; *American Swineherd* 38, (1921), 38, 86. <https://babel.hathitrust.org/cgi/pt?id=uc1.c2532096;view=1up;seq=1>. Accessed February, 11, 2017; *Poland China Journal*, 6, no. 12 (1920), 226, 542. <https://books.google.com/books?id=Zrk5AQAAAJ&pg=PP1#v=onepage&q=Bartley,%20NE&f=false>. Accessed February 11, 2017.

<sup>20</sup> *Ibid.*



Bartley Sales Barn

Red Willow County, Nebraska

**Name of Property**

**County and State**

In its brief but vital boost to the local economy from 1919 to 1921, the Bartley Sales Barn was significant in creating a commercial link between 'buyer' and 'seller' within a rural network of farming communities where none previously existed.

Criterion A: Social History

Almost from the outset of its construction in 1919, the barn was the product of a community roused by their desire to build a sales pavilion. Within weeks after the success of the pavilion's first livestock show, the Bartley Community Club began furnishing meals and refreshments to attendees. As time progressed, the post-livestock show gatherings became a more elaborate, "three-course banquet dinner with a song and dance program after each meal."<sup>21</sup> Within eight months from its inauguration, the Bartley Sale Pavilion Company relinquished control of the barn to the Republican Valley Poland China Breeders Association. Soon thereafter, the Breeders Association and the Bartley Community Club began to co-sponsor events at the sales barn. The co-sponsorship marked a point of departure for the post-livestock show gatherings: thereafter, the events occasionally brought in educational speakers, and, featured programs aimed at youth.<sup>22</sup> Whether the trend was influenced by the 1914 Smith-Lever Act establishing the Cooperative Extension Services, or, by a community already steeped in the tradition of having once been a 'college town' (Mallalieu University), it is difficult to conclude without further research.<sup>23</sup> Whatever the impulse, the 1920s was a decade of transition for the pavilion's use and function.

The early 1920s concluded several years of agricultural prosperity for Nebraska, and it did so swiftly.<sup>24</sup> From June to December 1920, the value of farm products dropped severely and as a result, many farmers and breeders were forced out of business including members of the Republican Valley Poland China Breeders Association.<sup>25</sup> Even though the weekly livestock shows stopped by the early 1920s, use of the sales barn evolved as it took on a greater social and civic role within the community. After the property went into private ownership in the late 1930s and its agricultural operations shifted to the pig farrowing barn extension to the south, and the cattle barn to the west, donations collected from the pavilion's social events helped cover the cost of maintenance and utilities. The sales barn staged literary programs, operated as a buying station during World War II, and, debates, town meetings, talent shows, and school sporting events took place there with some regularity from the 1930s through the early 1960s.<sup>26</sup>

Beyond its original function of livestock sales pavilion, the Bartley Sales Barn attained social and cultural meaning within the community during its period of significance 1921-1964 as it served as an important place of gathering and social interaction within a rural community in southwestern Nebraska.

---

## 9. Major Bibliographic References

---

**Bibliography** (Insert bibliography here – cite the books, articles and other sources used in preparing this form.)

<sup>21</sup> Connie Jo Discoe, "Round Barn Thrived Briefly in Bartley," *Newspaper Title and Date* (unknown), (In RW01-023 Site File, Nebraska State Historic Preservation Office).

<sup>22</sup> Survey form, in Site File RW01-023, Nebraska State Historic Preservation Office; Connie Jo Discoe, "Round Barn Thrived Briefly in Bartley," *Newspaper Title and Date* (unknown), (In RW01-023 Site File, Nebraska State Historic Preservation Office); Mrs. Charles Hoffmeister, "Bartley's Round Barn 1 of 40," *McCook Daily Gazette* (McCook, NE), February 14, 1968; "Bartley sale barn's story has 8 sides, many asides," *The Lincoln Journal* (Lincoln, NE), July 24, 1986.

<sup>23</sup> "Seaman Knapp - Father of Cooperative Extension," <https://specialcollections.nal.usda.gov/guide-collections/elsie-carper-collection-extension-service-home-economics-and-4-h> (Accessed April 14, 2017).

<sup>24</sup> *Historic Contexts in Nebraska*, "Temporal Periods" (On file, Nebraska State Historic Preservation Office, Lincoln, NE.), 9-14.

<sup>25</sup> *Historic Context Report 08.06*, "Republican Valley General Farming, Cash Grain, and Livestock Production," (On file, Nebraska State Historic Preservation Office, Lincoln, NE.), 6-7.

<sup>26</sup> Survey form, in Site File RW01-023, Nebraska State Historic Preservation Office; Connie Jo Discoe, "Round Barn Thrived Briefly in Bartley," *Newspaper Title and Date* (unknown), (In RW01-023 Site File, Nebraska State Historic Preservation Office); Mrs. Charles Hoffmeister, "Bartley's Round Barn 1 of 40," *McCook Daily Gazette* (McCook, NE), February 14, 1968; "Bartley sale barn's story has 8 sides, many asides," *The Lincoln Journal* (Lincoln, NE), July 24, 1986.

Bartley Sales Barn  
**Name of Property**

Red Willow County, Nebraska  
**County and State**

- 1860-1954 *Tract Books Index*. "John A. Johnson," reels 20 and 25.  
<http://www.nebraskahistory.org/databases/tractbooks.shtml>. Accessed January 28, 2017.
- . "Frank Larson," reels 20 and 25. <http://www.nebraskahistory.org/databases/tractbooks.shtml>. Accessed January 28, 2017.
- American Hereford Journal* 11, no. 9-16 (1920)  
<https://books.google.com/books?id=06c7AQAAMAAJ&pg=PP1#v=onepage&q&f=false>. Accessed February 11, 2017.
- American Swineherd* 38, (1921). <https://babel.hathitrust.org/cgi/pt?id=uc1.c2532096;view=1up;seq=1> Accessed February 11, 2017.
- Arthur, Eric and Dudley Witney. *The Barn: A Vanishing Landmark in North America*. New York: Arrowood Press, 1972.
- County Atlas. *Plat Book of Red Willow County, NE*. 917.82/B64e/Jefferson. R. C. Booth, 1959. Archives, Nebraska State Historical Society.
- Frudden, William E. *Farm Buildings: How to Build Them*. Charles City, IA: W.E. Frudden, 1916.
- Gilkerson, Joni. National Register of Historic Places, *Couser Barn*, Laurel, Cedar County, Nebraska. National Register #86001714. [http://www.nebraskahistory.org/histpres/nebraska/cedar/CD00-012\\_Couser\\_Barn.pdf](http://www.nebraskahistory.org/histpres/nebraska/cedar/CD00-012_Couser_Barn.pdf). Accessed January 7, 2017.
- Harsh, Lester. "Nebraska Historic Site Survey Form." *Date*, (unknown). In RW01-023 Site File. Nebraska State Historic Preservation Office. Lincoln, NE.
- Historic Context Report 08.06*. "Republican Valley General Farming, Cash Grain, and Livestock Production." On file, Nebraska State Historic Preservation Office, Lincoln, NE.
- Historic Contexts in Nebraska*. "Temporal Periods." On file, Nebraska State Historic Preservation Office, Lincoln, NE.
- Hoffmeister, Mrs. Charles. "Bartley's Round Barn 1 of 40." *McCook Daily Gazette* (McCook, NE), February 14, 1968.
- Jo Discoe, Connie. "Round Barn Thrived Briefly in Bartley." *Newspaper Title* (unknown), *Date*, (unknown). In RW01-023 Site File. Nebraska State Historic Preservation Office. Lincoln, NE.
- Murphy, David. National Register of Historic Places, *Frank Uehling Barn*, Uehling, Dodge County, Nebraska. National Register #85001666. <http://www.nebraskahistory.org/histpres/nebraska/dodge/DD00-049-Uehling-Barn.pdf>. Accessed January 7, 2017.
- NeSHPO. Nebraska Historic Resources Survey & Inventory (NeHRSI). <http://histpres.maps.arcgis.com/>. Accessed December 2016, January and February 2017
- Noble, Allen G. and Richard K. Cleek. *The Old Barn Book*. New Brunswick, NJ: Rutgers University Press, 1995.
- Poland China Journal*, 6, no. 12 (1920).  
<https://books.google.com/books?id=Zrk5AQAAMAAJ&pg=PP1#v=onepage&q=Bartley,%20NE&f=false>. Accessed February 11, 2017.
- Property Records. Red Will Tax Assessor's Office online. <https://redwillow.gisworkshop.com/>. Accessed November and December 2016; January and February 2017.

Bartley Sales Barn

Red Willow County, Nebraska

**Name of Property**

**County and State**

*Red Willow County Atlas. "Plat of Bartley."* Chicago: Geo. A. Ogle & Co., Publishers and Engravers, 1905. Digitized copy available at Nebraska State Historical Society's Archeology Office.

Site File RW01-023. On file, Nebraska State Historic Preservation Office, Lincoln, NE.

Soike, Lowell J. *Without Right Angles: The Round Barns of Iowa*. Des Moines, Iowa: Iowa State Historical Department, Office of Historic Preservation, 1983.

Sculle, Keith A. and H. Wayne Price. "Barns of Nonorthogonal Plan." In *Barns of the Midwest*, edited by Allen G. Noble and Hubert G.H. Wilhelm, 188-212. Athens: Ohio University Press, 1995.

*United States, Bureau of Land Management Land Patents.* <http://www.glorerecords.blm.gov/>. Accessed January 28, 2017.

U.S. Department of Interior, National Park Service, *Technical Preservation Brief #20: The Preservation of Historic Barns*. Michael J. Auer. 1989.

Welsch, Roger L. "Nebraska's Round Barns," *Nebraska History* 51:1 (Spring, 1970), 49-92.

**Previous documentation on file (NPS):**

**Primary location of additional data:**

- preliminary determination of individual listing (36 CFR 67 has been requested)
- previously listed in the National Register
- previously determined eligible by the National Register
- designated a National Historic Landmark
- recorded by Historic American Buildings Survey # \_\_\_\_\_
- recorded by Historic American Engineering Record # \_\_\_\_\_
- recorded by Historic American Landscape Survey # \_\_\_\_\_

- State Historic Preservation Office
- Other State agency
- Federal agency
- Local government
- University
- Other (Name of repository) \_\_\_\_\_

Returned

Historic Resources Survey Number (if assigned): RW01-023

**10. Geographical Data**

Acreage of property <u>Less than an acre</u>	USGS Quadrangle <u>Bartley Quadrangle, Nebraska 7.5-Minute Series</u>
--	---

**Latitude/Longitude Coordinates**

Datum if other than WGS84: \_\_\_\_\_

1. Latitude <u>40.250670</u>	Longitude <u>-100.306388</u>
2. Latitude _____	Longitude _____
3. Latitude _____	Longitude _____
4. Latitude _____	Longitude _____

**Verbal Boundary Description** (Describe the boundaries of the property.)

A rectangular-shaped parcel with the following legal description:  
Original Bartley Block 70, Lots 1 to 5. SW¼ of the SW¼, Section 6, Township 3, Range 26 West.

Bartley Sales Barn Red Willow County, Nebraska  
**Name of Property** **County and State**

**Boundary Justification** (Explain why the boundaries were selected.)

This parcel represents the barn's original location since its construction in 1919.

---

### 11. Form Prepared By

name/title Diane Laffin/Preservation Associate  
organization Nebraska State Historical Society date March 31, 2017  
street & number 5050 N. 32<sup>nd</sup> Avenue telephone 402-471-4755  
city or town \_\_\_\_\_ state NE zip code 68504  
email [Diane.laffin@nebraska.gov](mailto:Diane.laffin@nebraska.gov)

---

### Additional Documentation

Submit the following items with the completed form:

- **Maps:** A **USGS map** or equivalent (7.5 or 15 minute series) indicating the property's location.
- **Sketch map** for historic districts and properties having large acreage or numerous resources. Key all photographs to map.
- **Additional items:** (Check with the SHPO for any additional items.)

### Photographs

Submit clear and descriptive photographs. The size of each image must be 1000x1000 pixels (minimum), 3000x2000 preferred, at 300 ppi (pixels per inch) or larger. Key all photographs to the sketch map. Each photograph must be numbered and that number must correspond to the photograph number on the photo log. For simplicity, the name of the photographer, photo date, etc. may be listed once on the photograph log and doesn't need to be labeled on every photograph.

### Photo Log

Name of Property Bartley Sales Barn  
City or Vicinity Bartley County Red Willow State Nebraska  
Photographers Diane L. Laffin / Greg Hoffman (owner) Date Photographed 6-29-2016 / 1-26-2015

Description of Photograph(s) and number, include description of view indicating direction of camera.

1. Photo #1 (NE\_Red Willow County\_Bartley Sales Barn\_0001)  
South façade (right) of sales barn, non-contributing hog farrowing barn (left), camera facing north.
2. Photo #2 (NE\_Red Willow County\_Bartley Sales Barn\_0002)  
Close-up of south façade, camera facing north.
3. Photo #3 (NE\_Red Willow County\_Bartley Sales Barn\_0003)  
Close-up of north façade, camera facing south.
4. Photo #4 (NE\_Red Willow County\_Bartley Sales Barn\_0004)  
Northwest façade of sales barn (left), connector shed (center), battle barn (right), camera facing southwest.

Bartley Sales Barn  
**Name of Property**

Red Willow County, Nebraska  
**County and State**

5. Photo #5 (NE\_Red Willow County\_Bartley Sales Barn\_0005)  
Internal shot of south wall, camera facing southeast.
6. Photo #6 (NE\_Red Willow County\_Bartley Sales Barn\_0006)  
Support beams of octagonal monitor, camera facing up, and photographer facing northeast.
7. Photo #7 (NE\_Red Willow County\_Bartley Sales Barn\_0007)  
Support beams of octagonal monitor, camera facing up, and photographer facing north.
8. Photo #8 (NE\_Red Willow County\_Bartley Sales Barn\_0008)  
Door of north entryway into hog farrowing barn, camera facing south.
9. Photo #9 (NE\_Red Willow County\_Bartley Sales Barn\_0009)  
Original frame door from barn.
10. Photo #10 (NE\_Red Willow County\_Bartley Sales Barn\_00010)  
Original mullions from monitor windows.
11. Photo #11 (NE\_Red Willow County\_Bartley Sales Barn\_00011)  
A second original frame door from barn.

**Paperwork Reduction Act Statement:** This information is being collected for applications to the National Register of Historic Places to nominate properties for listing or determine eligibility for listing, to list properties, and to amend existing listings. Response to this request is required to obtain a benefit in accordance with the National Historic Preservation Act, as amended (16 U.S.C. 60 et seq.).

**Estimated Burden Statement:** Public reporting burden for this form is estimated to average 100 hours per response including time for reviewing instructions, gathering and maintaining data, and completing and reviewing the form. Direct comments regarding this burden estimate or any aspect of this form to the Office of Planning and Performance Management, U.S. Dept. of the Interior, 1849 C. Street, NW, Washington, DC.

Bartley Sales Barn  
**Name of Property**

Red Willow County, Nebraska  
**County and State**

**Bartley Sales Barn, Bartley, NE**    Property Boundary    — —  
Zone 14T  
Easting: 388886.76            Northing: 4456388.47



Bartley Sales Barn  
Name of Property

Red Willow County, Nebraska  
County and State



Bartley Sales Barn  
**Name of Property**

Red Willow County, Nebraska  
**County and State**

Photo #1 (NE\_Red Willow County\_Bartley Sales Barn\_0001)  
South façade (right) of sales barn, non-contributing hog farrowing barn (left), camera facing north.



Photo #2 (NE\_Red Willow County\_Bartley Sales Barn\_0002)  
Close-up of south façade, camera facing north.





Bartley Sales Barn  
**Name of Property**

Red Willow County, Nebraska  
**County and State**

Photo #3 (NE\_Red Willow County\_Bartley Sales Barn\_0003)  
Close-up of north façade, camera facing south.



Returned

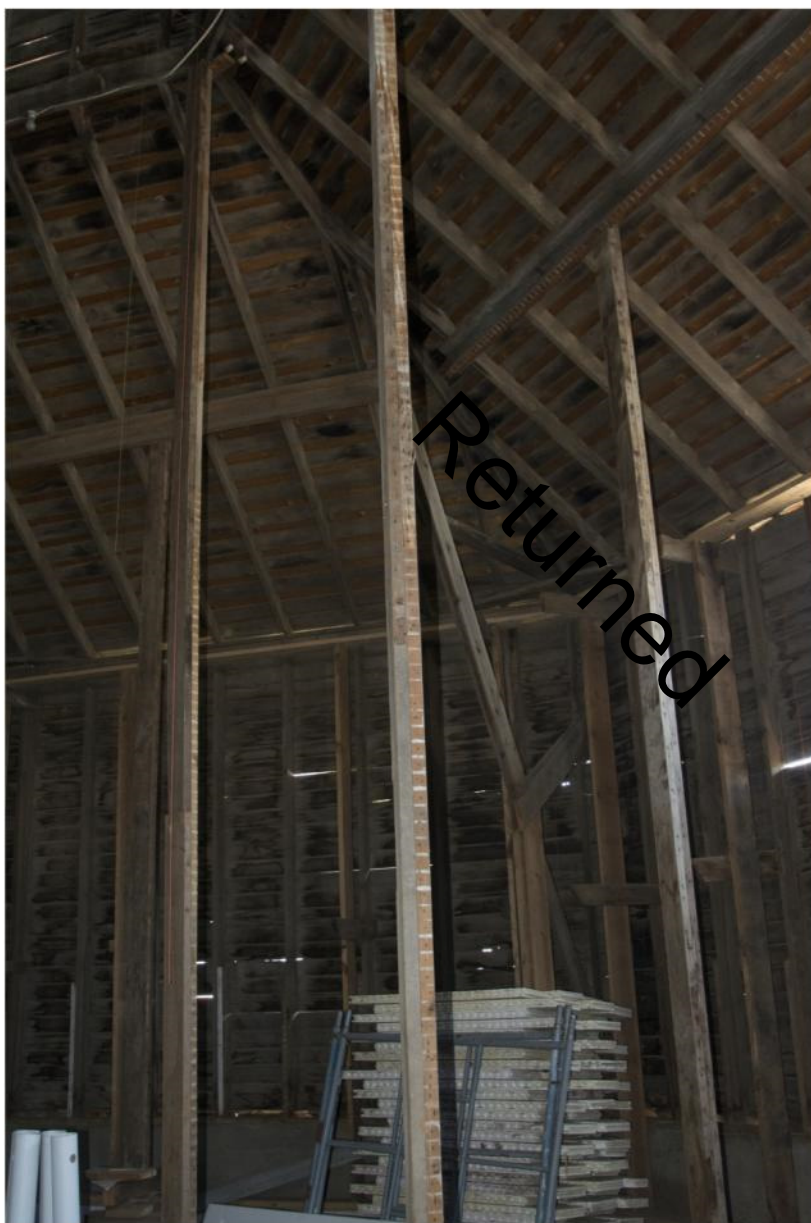
Photo #4 (NE\_Red Willow County\_Bartley Sales Barn\_0004)  
Northwest façade of sales barn (left), connector shed (center), battle barn (right), camera facing southwest.



Bartley Sales Barn  
**Name of Property**

Red Willow County, Nebraska  
**County and State**

Photo #5 (NE\_Red Willow County\_Bartley Sales Barn\_0005)  
Internal shot of south wall, camera facing southeast.



Bartley Sales Barn  
**Name of Property**

Red Willow County, Nebraska  
**County and State**

Photo #6 (NE\_Red Willow County\_Bartley Sales Barn\_0006)  
Support beams of octagonal monitor, camera facing up, and photographer facing northeast.



Returned

Photo #7 (NE\_Red Willow County\_Bartley Sales Barn\_0007)  
Support beams of octagonal monitor, camera facing up, and photographer facing north.



Bartley Sales Barn  
**Name of Property**

Red Willow County, Nebraska  
**County and State**

Photo #8 (NE\_Red Willow County\_Bartley Sales Barn\_0008)  
Door of north entryway into hog farrowing barn, camera facing south.



Bartley Sales Barn  
**Name of Property**

Red Willow County, Nebraska  
**County and State**

Photo #9 (NE\_Red Willow County\_Bartley Sales Barn\_0009)  
Original frame door from barn.



Photo #10 (NE\_Red Willow County\_Bartley Sales Barn\_00010)  
Original mullions from monitor windows.



Bartley Sales Barn  
**Name of Property**

Red Willow County, Nebraska  
**County and State**

Photo #11 (NE\_Red Willow County\_Bartley Sales Barn\_00011)  
A second original frame door from barn.



**Bartley Sales Barn**

**Southwest corner of  
U.S. Hwy 6/34 (Maple Street)  
and Commercial Street,  
Bartley, Red Willow Co.,  
Nebraska**

Latitude/Longitude Coordinates:

40.250670, -100.306388

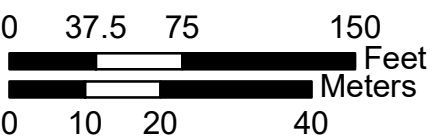
Datum: WGS84



**Legend**

 Proposed NRHP Boundary

1:1,000



Esri, HERE, DeLorme, MapmyIndia, © OpenStreetMap contributors, Source; Esri, DigitalGlobe, GeoEye, Earthstar Geographics, CNES/Airbus DS, USDA, USGS, AeroGRID, IGN, and the GIS User Community

# Bartley Sales Barn

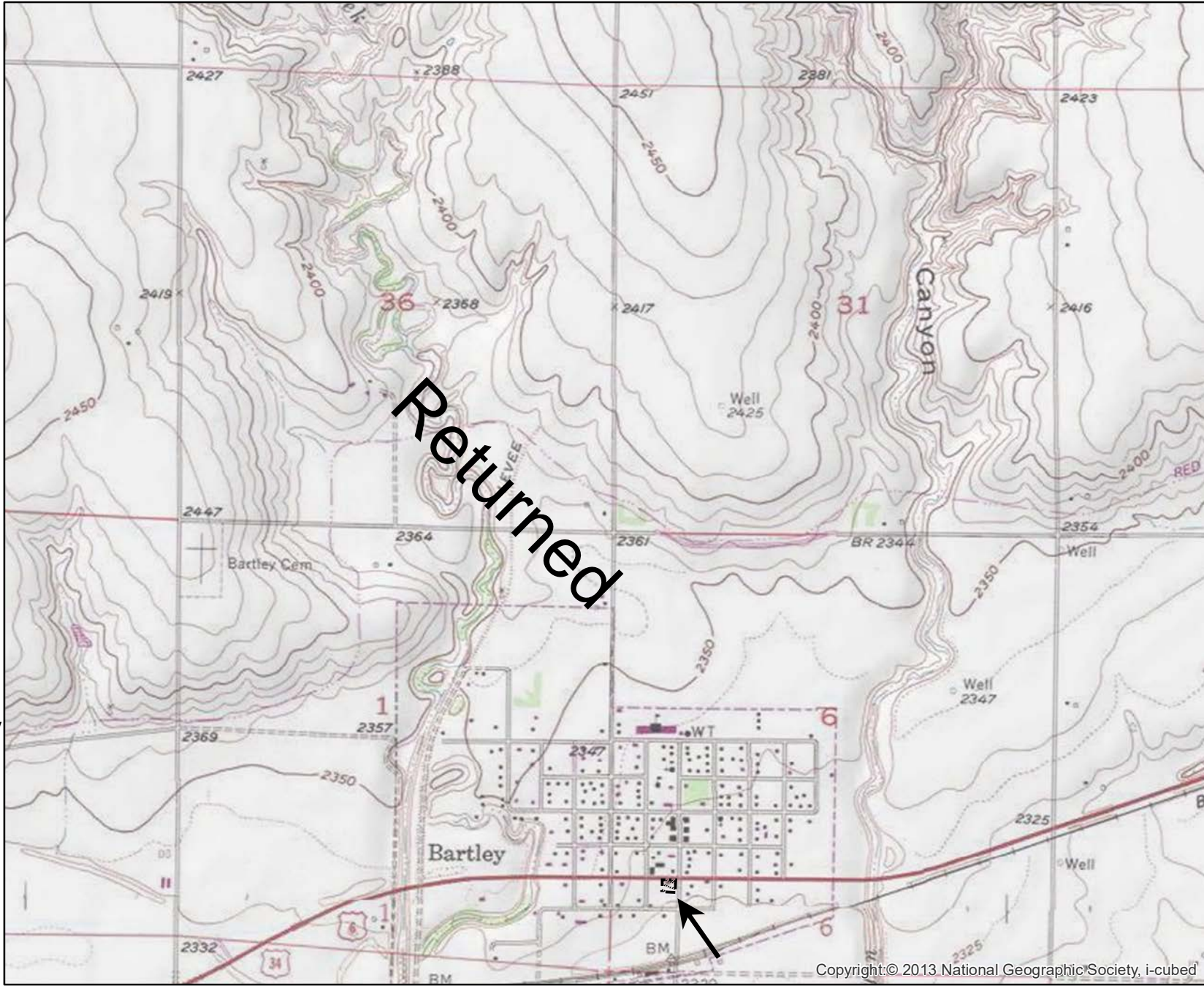
Southwest corner of  
U.S. Hwy 6/34 (Maple Street)  
and Commercial Street,  
Bartley, Red Willow Co.,  
Nebraska

Latitude/Longitude Coordinates:


40.250670, -100.306388

Datum: WGS84

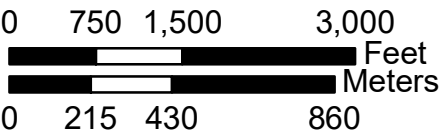
USGS 7.5' Quad: Bartley



## Legend

 Proposed NRHP Boundary

1:20,000





UNITED STATES DEPARTMENT OF THE INTERIOR  
NATIONAL PARK SERVICE

NATIONAL REGISTER OF HISTORIC PLACES  
EVALUATION/RETURN SHEET

Requested Action:

Property Name:

Multiple Name:

State & County:

Date Received: 6/9/2017      Date of Pending List:      Date of 16th Day:      Date of 45th Day: 7/24/2017      Date of Weekly List:

Reference number:

Nominator:

Reason For Review:

- |                                       |  |   |
|---------------------------------------|--|---|
| <input type="checkbox"/> Appeal       | <input type="checkbox"/> PDIL            | <input type="checkbox"/> Text/Data Issue    |
| <input type="checkbox"/> SHPO Request | <input type="checkbox"/> Landscape       | <input type="checkbox"/> Photo              |
| <input type="checkbox"/> Waiver       | <input type="checkbox"/> National        | <input type="checkbox"/> Map/Boundary       |
| <input type="checkbox"/> Resubmission | <input type="checkbox"/> Mobile Resource | <input type="checkbox"/> Period             |
| <input type="checkbox"/> Other        | <input type="checkbox"/> TCP             | <input type="checkbox"/> Less than 50 years |
|                                       | <input type="checkbox"/> CLG             |   |

Accept       Return       Reject      7/13/2017 Date

Abstract/Summary Comments:

Recommendation/ Criteria:

Reviewer Jim Gabbert  Discipline Historian

Telephone (202)354-2275 Date \_\_\_\_\_

DOCUMENTATION:    see attached comments : **Yes**    see attached SLR : No

If a nomination is returned to the nomination authority, the nomination is no longer under consideration by the National Park Service.



# United States Department of the Interior

NATIONAL PARK SERVICE  
1849 C Street, N.W.  
Washington, DC 20240

## The United States Department of the Interior National Park Service

### National Register of Historic Places Evaluation/Return Sheet

Property Name: Bartley Sales Barn  
Red Willow County, NE

Reference Number: 100001356

#### Reason for Return

The Bartley Sales Barn appears to be eligible for the National Register, but the nomination is being returned for revision. The nomination is submitted citing Criteria A and C, with Agriculture, Architecture, Commerce, and Social History as the related areas of significance, with two periods of significance that cover the 1919-1964 timeframe.

There are a couple of issues that the nomination does not address. Considering the period of significance for agriculture includes the time when the farrowing barn, the cattle barn, and the connector were constructed, it is unclear why they are considered noncontributing. The nomination simply states that "they do not retain sufficient historic integrity." What changes have been made to the buildings to render them noncontributing? The images provided and found online do not indicate and substantial loss of fabric or other alteration. Considering that the barns constitute a majority of the property's square footage, and are intricately tied to its agricultural use (and significance) after 1921, *if* they are considered noncontributing, does that affect the integrity of the barn as it relates to this area of significance and the longer period of significance? After all, the buildings serve as a complex that works together.

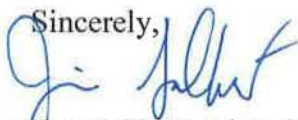
Did the complex continue to serve as a sales barn after it went into private ownership in 1921?

In terms of social history, can you provide a little more context? Was this *the* community gathering place? Was there a school or gym that also served such a function?

Do the boundaries reflect the property's historic extent? If looking at this under Criterion A, both in relationship to its use as a show/sales barn and as an important agricultural complex, are the boundaries appropriate?

We appreciate the opportunity to review this nomination and hope that you find these comments useful. Please feel free to contact me if you have any questions. I can be reached at (202) 354-2275 or email at <[James\\_Gabbert@nps.gov](mailto:James_Gabbert@nps.gov)>.

Sincerely,

A handwritten signature in blue ink, appearing to read "Jim Gabbert". The signature is fluid and cursive, with the first name "Jim" being more prominent than the last name "Gabbert".

Jim Gabbert, Historian  
National Register of Historic Places  
7/13/2017



RS 100001356

Preserving the past. Building the future.

May 25, 2018

Jim Gabbert  
NPS-National Register of Historic Places  
1849 C Street, NW  
Mail Stop 7228  
Washington, DC 20240



Re: Bartley Sales Barn and Livestock Facility, Bartley, Red Willow County, NE

Dear Mr. Gabbert,

Enclosed is the complete resubmitted nomination packet for the Bartley Sales Barn and Livestock Facility, in O'Neill, Holt County, Nebraska. The enclosed contents are as follows:

- The signed first page of the Bartley Sales Barn and Livestock Facility nomination;
- One (1) archival disk with the true and correct copy of the nomination for the Bartley Sales Barn and Livestock Facility to the National Register of Historic Places in PDF format; and
- One (1) archival disc with the photographs for the Bartley Sales Barn and Livestock Facility nomination.

If you have any questions regarding the submitted materials, feel free to contact me at the phone number or email address below.

Sincerely,

A handwritten signature in blue ink that reads 'David L. Calease'.

David L. Calease  
National Register Coordinator  
Nebraska State Historic Preservation Office

Phone: 402-471-4775  
Fax: 402-471-3100  
[david.calease@nebraska.gov](mailto:david.calease@nebraska.gov)

Enclosures (2): 1 disk with Nomination  
1 disk with National Register Photographs

1500 R Street  
Lincoln, NE 68508-1651  
P: 402.471.3270  
P: 800.833.6747  
F: 402.471.3100  
[history.nebraska.gov](http://history.nebraska.gov)