



Bandelier CCC Historic District

Bandelier National Monument

NPS Photo by Laura Soulliere Harrison

3/84

Road into Frijoles Canyon



Bandelier CCC Historic District

Bandelier National Monument

NPS Photo by Laura Soulliere Harrison

3/84

Most of the District complex, as seen from  
the trail above.



Bandelier CCC Historic District

Bandelier National Monument

NPS Photo by Laura Soulliere Harrison

3/84

Front elevation of Museum/Visitor Center  
(B-2)



Bandelier CCC Historic District  
Bandelier National Monument  
NPS Photo by Laura Soulliere Harrison

3/84

Cabins (permanent housing), B-29





Bandelier CCC Historic District

Bandelier National Monument

NPS Photo by Laura Soulliere Harrison

3/84

The "Kiva" (B-21)



Bandelier CCC Historic District

Bandelier National Monument

NPS Photo by Laura Soulliere Harrison

Cabins (now offices), B-24



Bandelier CCC Historic District

Bandelier National Monument

NPS Photo by Laura Soulliere Harrison

3/84

Fire Lookout, B-30



Bandelier CCC Historic District

Bandelier National Monument

NPS Photo by Laura Soulliere Harrison

3/84

B-19, former cabins for Frijoles Canyon  
Lodge, now permanent housing.





Bandelier CCC Historic District

Bandelier National Monument

NPS Photo by Laura Soulliere Harrison

3/84

Stables, B-25



Bandelier CCC Historic District

Bandelier National Monument

NPS Photo by Laura Soulliere Harrison

3/84

Rear elevation of Museum/Visitor Center (B-2)



Bandelier CCC Historic District

Bandelier National Monument

NPS Photo by Laura Soulliere Harrison

3/84

Portal and patio at rear elevation of  
Museum/Visitor Center



Bandelier CCC Historic District

Bandelier National Monument

NPS Photo by Laura Soulliere Harrison

3/84

Portal between Comfort Station (B-1) and  
Museum/Visitor Center ( B-2)





Bandelier CCC Historic District

Bandelier National Monument

NPS Photo by Laura Soulliere Harrison

3/84

Quarters B-8, residential area



Bandelier CCC Historic District

Bandelier National Monument

NPS Photo by Laura Soulliere Harrison

3/84

Cabins, B-20, formerly Frijoles Canyon  
Lodge, now housing



Bandelier CCC Historic District

Bandelier National Monument

NPS Photo by Laura Soulliere Harrison

3/84

Cabins (now seasonal housing), B-27



Bandelier CCC Historic District

Bandelier National Monument

NPS Photo by Laura Soulliere Harrison

3/84

Stone walls, steps, and landscaping in  
former Frijoles Canyon Lodge area





Bandelier CCC Historic District

Bandelier National Monument

NPS Photo by Laura Soulliere Harrison

3/84

Entrance road and guardrail



Bandelier CCC Historic District

Bandelier National Monument

NPS Photo by Laura Soulliere Harrison

3/84

Quarters B-11, residential area



VISITOR CENTER

NO PETS PERMITTED  
IN BACKCOUNTRY  
OR ON TRAILS

Bandelier CCC Historic District

Bandelier National Monument

NPS Photo by Laura Soulliere Harrison

3/84

Front elevation of Museum/Visitor Center

(B-2)



Bandelier CCC Historic District

Bandelier National Monument

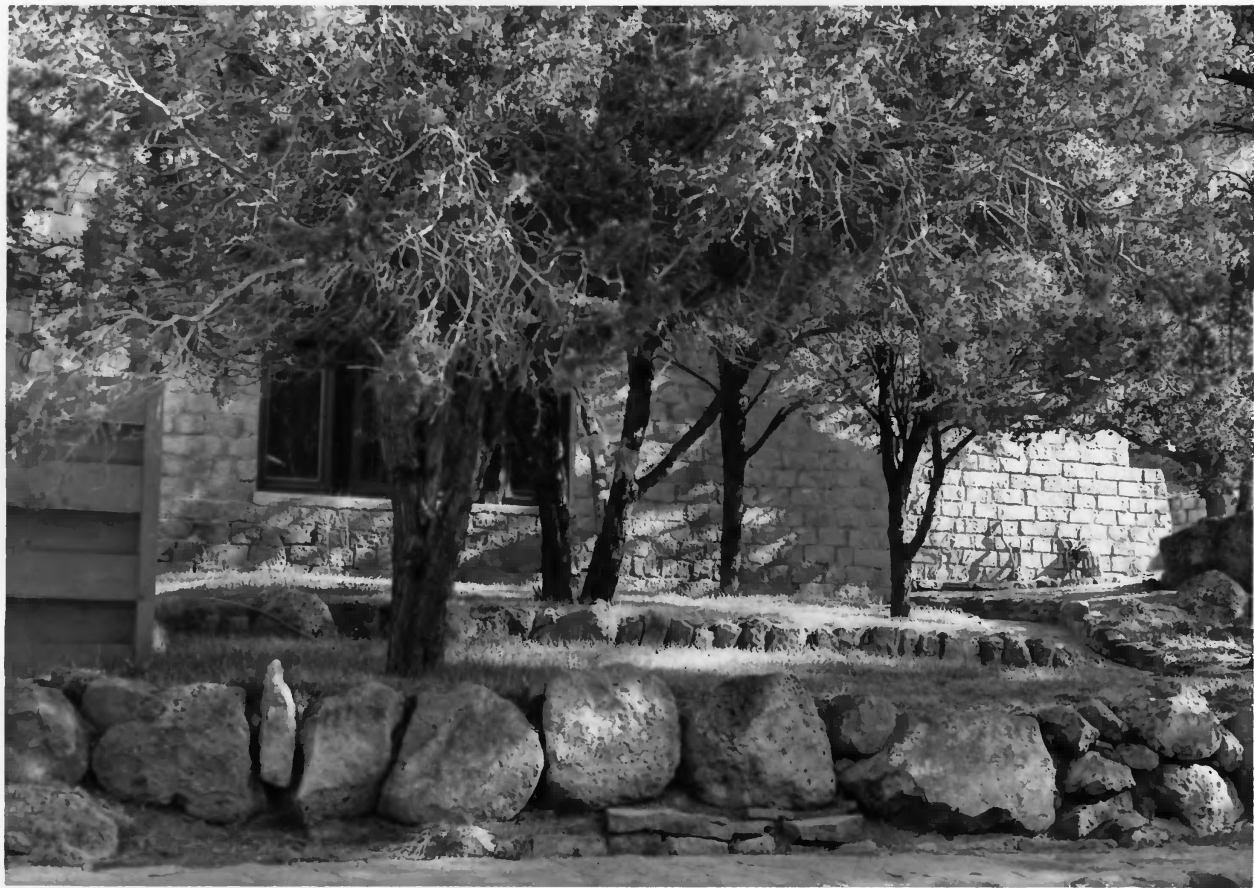
NPS Photo by Laura Soulliere Harrison

3/84

CCC-built furniture and metate design  
water fountain, patio between B-15 and

B-17.





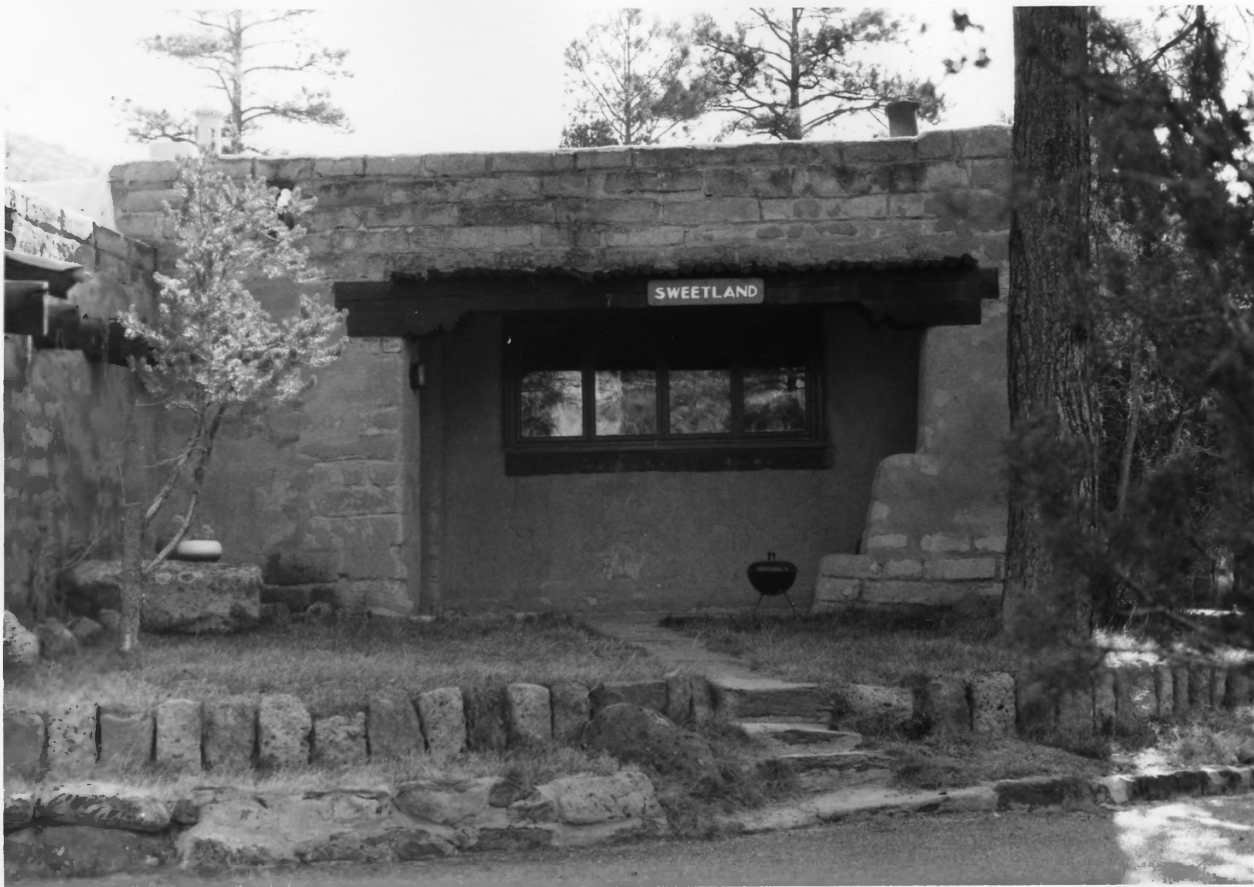
Bandelier CCC Historic District

Bandelier National Monument

NPS Photo by Laura Soulliere Harrison

3/84

Quarters B-8, residential area



Bandelier CCC Historic District

Bandelier National Monument

NPS Photo by Laura Soulliere Harrison

3/84

Residence B-7



Bandelier CCC Historic District

Bandelier National Monument

NPS Photo by Laura Soulliere Harrison

3/84

Portal and patio at rear of Museum/Visitor  
Center (B-2)



Bandelier CCC Historic District

Bandelier National Monument

NPS Photo by Laura Soulliere Harrison

3/84

Superintendent's Residence, B-32





Bandelier CCC Historic District

Bandelier National Monument

NPS Photo by Laura Soulliere Harrison

3/84

B-17 left (present snack bar and curio shop), and B-15 right (present Monument Headquarters)



Bandelier CCC Historic District

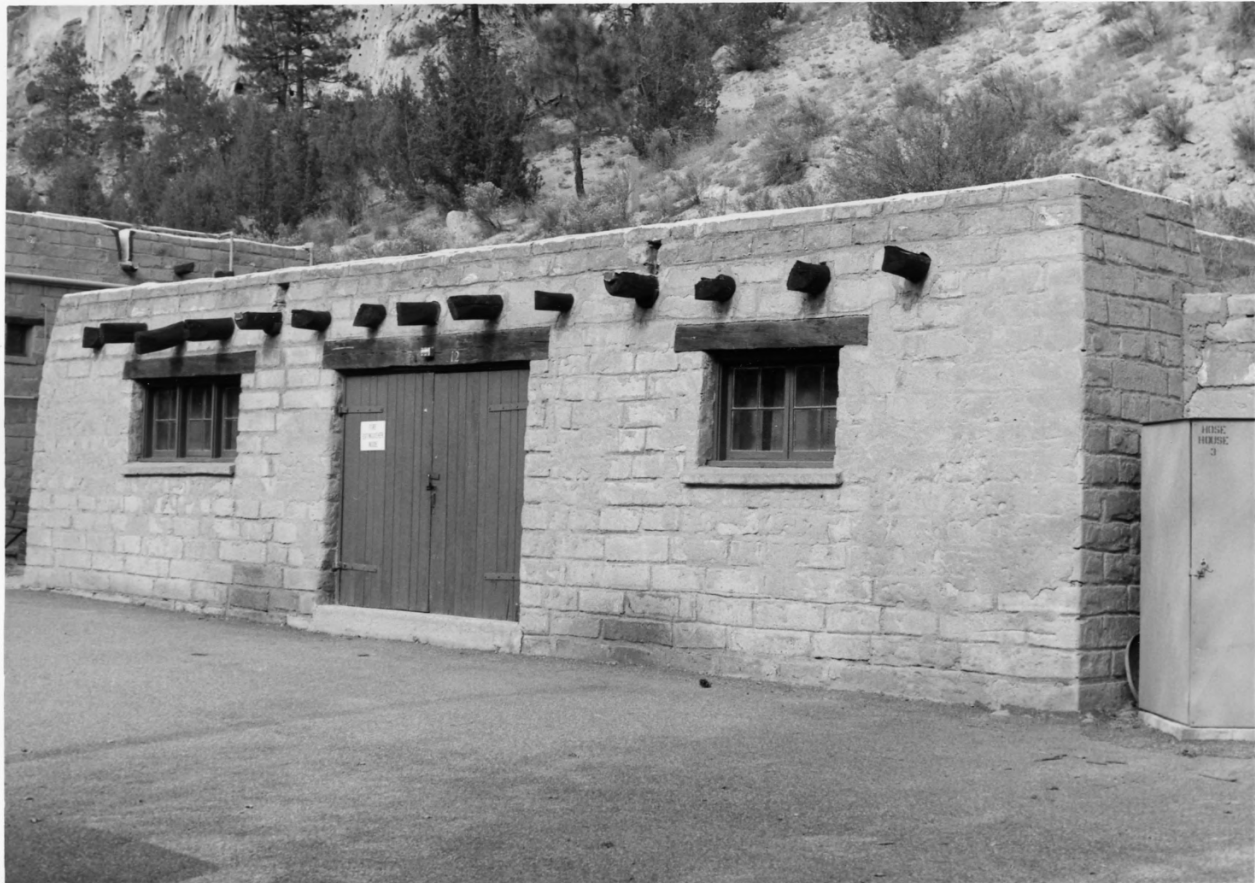
Bandelier National Monument

NPS Photo by Laura Soulliere Harrison

3/84

Cabins, B-27, formerly Frijoles Canyon

Lodge, now seasonal housing



Bandelier CCC Historic District

Bandelier National Monument

NPS Photo by Laura Soulliere Harrison

3/84

Carpenters' Shop (B-4), Maintenance Yard



Bandelier CCC Historic District

Bandelier National Monument

NPS Photo by Laura Soulliere Harrison

3/84

Typical patio entry door with band-sawn  
grilles





Bandelier CCC Historic District

Bandelier National Monument

NPS Photo by Laura Soulliere Harrison

3/84

Stone walls, steps, and landscaping in  
former Frijoles Canyon Lodge area