

UNITED STATES DEPARTMENT OF THE INTERIOR
NATIONAL PARK SERVICE

NATIONAL REGISTER OF HISTORIC PLACES
PROPERTY PHOTOGRAPH FORM

FOR NPS USE ONLY

RECEIVED OCT 21 1975

DATE ENTERED JAN 31 1976

SEE INSTRUCTIONS IN HOW TO COMPLETE NATIONAL REGISTER FORMS
TYPE ALL ENTRIES -- ENCLOSE WITH PHOTOGRAPH

1 NAME

HISTORIC Mount Hope Bridge

AND/OR COMMON

Mount Hope Bridge

2 LOCATION

CITY, TOWN Bristol and Portsmouth VICINITY OF

Bristol &
STATE Rhode Island COUNTY Newport

3 PHOTO REFERENCE

PHOTO CREDIT Lombard J. Pozzi

DATE OF PHOTO July, 1975

NEGATIVE FILED AT Rhode Island Historical Preservation Commission

4 IDENTIFICATION

DESCRIBE VIEW, DIRECTION, ETC. IF DISTRICT. GIVE BUILDING NAME & STREET

PHOTO NO. 1 of 6

Present-day view of Mount Hope Bridge from the Bristol side

loc. Present-day view of Mount
Hope Bridge from the Bristol
side
1 of 6



PROPERTY OF THE NATIONAL REGISTER

NPS Number 1/31/76

Title: Mount Hope Bridge
Bristol + Newport Counties, R.I.

Loc. Construction photograph of
"Pier 21 and Approach"



PROPERTY OF THE NATIONAL REGISTER

NPS Number 1/31/76

Title: Mount Hope Bridge
Bristol & Newport Counties, R.I.

Loc. Construction photographs of
"Cable Spinning at Bristol
Anchorage"



PROPERTY OF THE NATIONAL REGISTER

NPS Number 1/3/76

Title: Mount Hope Bridge
Bristol Newport County, R.I.

Loc. Construction photographs:
General view of erection of
stiffening trusses



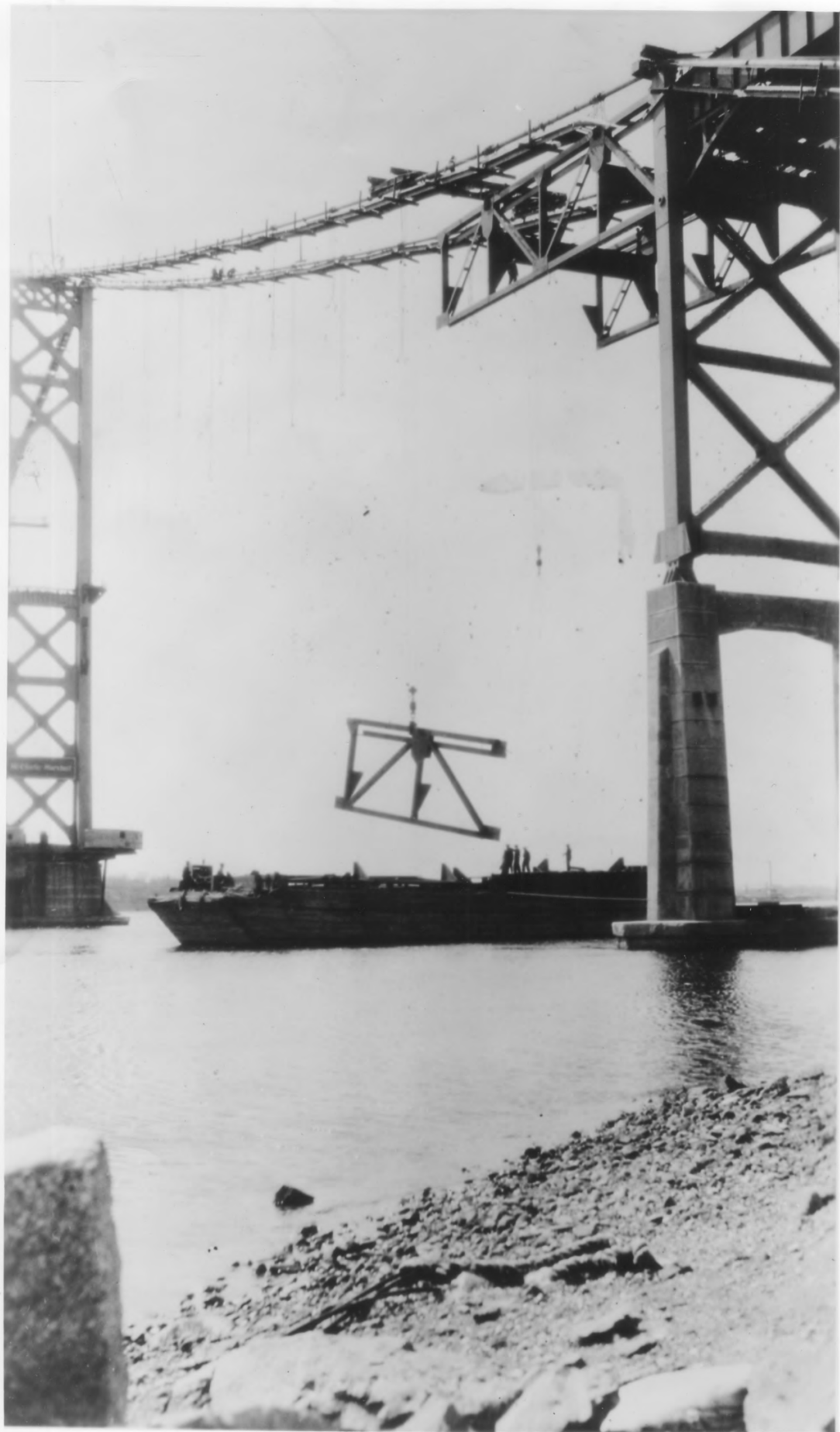
PROPERTY OF THE NATIONAL REGISTER

NPS Number 1/31/76

Title: Mount Hope Bridge
Bristol + Newport Counties, R.I.

Loc. Construction photo: "Center Span Deck,
and Door, Tower 9, Cable + Joint
Bridge, Stiffening Trusses"

5 of 6



PROPERTY OF THE NATIONAL REGISTER

NPS Number 1/31/76

Title: Mount Hope Bridge
Bristol Newport County, R.I.

Loc. Constructive photographs;
"Lowering Stiffening Trusses"