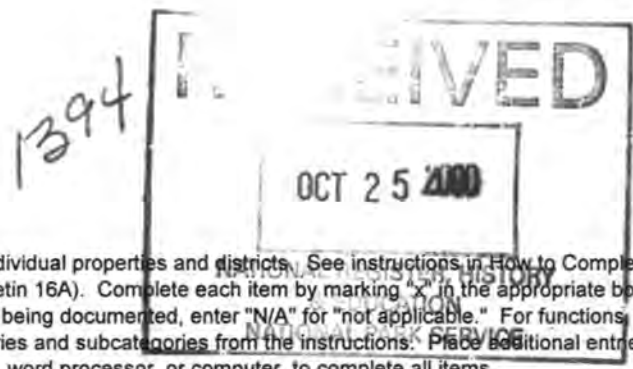


United States Department of the Interior
National Park Service

National Register of Historic Places
Registration Form



This form is for use in nominating or requesting determinations for individual properties and districts. See instructions in How to Complete the National Register of Historic Places Registration Form (National Register Bulletin 16A). Complete each item by marking "X" in the appropriate box or by entering the information requested. If any item does not apply to the property being documented, enter "N/A" for "not applicable." For functions, architectural classification, materials, and areas of significance, enter only categories and subcategories from the instructions. Place additional entries and narrative items on continuation sheets (NPS Form 10-900a). Use a typewriter, word processor, or computer, to complete all items.

1. Name of Property

historic name BOULEVARD DINER (The Diners of Massachusetts MPS)
other names/site number _____

2. Location

street & number 155 Shrewsbury Street not for publication
city or town Worcester vicinity _____
state Massachusetts code MA county Worcester code 027 zip code 01604

3. State/Federal Agency Certification

As the designated authority under the National Historic Preservation Act of 1986, as amended, I hereby certify that this nomination
 request for determination of eligibility meets the documentation standards for registering properties in the National Register of
Historic Places and meets the procedural and professional requirements set forth in 36 CFR Part 60. In my opinion, the property
 meets does not meet the National Register Criteria. I recommend that this property be considered significant
 nationally statewide locally. (See continuation sheet for additional comments.)

Elsa N. Fitzgerald 10/20/00
Signature of certifying official/Title Judith B. McDonough, Executive Director Date
Massachusetts Historical Commission, State Historic Preservation Officer
State or Federal agency and bureau _____

In my opinion, the property meets does not meet the National Register criteria. (See continuation sheet for additional Comments.)

Signature of certifying official/Title _____ Date _____
State or Federal agency and bureau _____

4. National Park Service Certification

I, hereby certify that this property is:
 entered in the National Register
 See continuation sheet.
 determined eligible for the
National Register
 See continuation sheet.
 determined not eligible for the
National Register
 removed from the
National Register
 other (explain): _____

Edson H. Beall 11/22/00
Signature of the Keeper Date of Action

Boulevard Diner _____
Name of Property

Worcester, MA
County and State

5. Classification

Ownership of Property

(Check as many boxes as apply)

- private
- public-local
- public-State
- public-Federal

(Check only one box)

- building(s)
- district
- site
- structure
- object

Number of Resources within Property

(Do not include previously listed resources in the count.)

Contributing	Noncontributing
_____ 1 _____	_____ building
_____	_____ sites
_____	_____ structures
_____	_____ objects
_____ 1 _____	Total

Name of related multiple property listing

(Enter "N/A" if property is not part of a multiple property listing.)

20th Century Commercial Architecture: Diners of Mass. _____

Number of contributing resources previously listed in the National Register

_____ 0 _____

6. Function or Use

Historic Functions

(Enter categories from instructions)

_____ COMMERCE/TRADE/restaurant _____

Current Functions

(Enter categories from instructions)

_____ COMMERCE/TRADE/restaurant _____

7. Description

Architectural Classification

(Enter categories from instructions)

_____ New England Barrel Roof Diner _____

Materials

(Enter categories from instructions)

foundation _____ brick _____

walls _____ porcelain enamel _____

roof _____ asphalt shingle _____

other _____ wood _____

Narrative Description

(Describe the historic and current condition of the property on one or more continuation sheets.)

Boulevard Diner

Name of Property

Worcester, MA

County and State

8. Statement of Significance

Applicable National Register Criteria

(Mark "x" in one or more boxes for the criteria qualifying the property for National Register listing.)

- A** Property is associated with events that have made a significant contribution to the broad patterns of our history.
- B** Property is associated with the lives of persons significant in our past.
- C** Property embodies the distinctive characteristics of a type, period, or method of construction or represents the work of a master, or possesses high artistic values, or represents a significant and distinguishable entity whose components lack individual distinction.
- D** Property has yielded, or is likely to yield, information important in prehistory or history.

Criteria Considerations

(Mark "x" in all the boxes that apply.)

Property is:

- A** owned by religious institution or used for religious purposes.
- B** removed from its original location.
- C** a birthplace or grave.
- D** a cemetery.
- E** a reconstructed building, object, or structure.
- F** a commemorative property.
- G** less than 50 years of age or achieved significance within the past 50 years.

Narrative Statement of Significance

(Explain the significance of the property on one or more continuation sheets.)

9. Major Bibliographical References

(Cite the books, articles, and other sources used in preparing this form on one or more continuation sheets.)

Previous documentation on file (NPS):

- preliminary determination of individual listing (36 CFR 67) has been requested
- previously listed in the National Register
- previously determined eligible by the National Register
- designated a National Historic Landmark
- recorded by Historic American Buildings Survey # _____
- recorded by Historic American Engineering Record # _____

Areas of Significance

(Enter categories from instructions)

ARCHITECTURE

COMMERCE

Period of Significance

Significant Dates

1936-1949

Significant Person

(Complete if Criterion B is marked above)

Cultural Affiliation

Architect/Builder

Worcester Lunch Car Company

Primary location of additional data:

- State Historic Preservation Office
- Other State agency
- Federal agency
- Local government
- University
- Other

Name of repository:

United States Department of the Interior
National Park Service

National Register of Historic Places
Continuation Sheet

Section number 7 Page 1

THE DINERS OF MASSACHUSETTS MPS
Boulevard Diner
Worcester (Worcester), MA

7. Description

The Boulevard Diner, 155 Shrewsbury Street, Worcester (1936, MHC #2059) is diner #730 built by the Worcester Lunch Car Company of Worcester. It is located on a commercial corridor through a residential area northeast of Worcester's central business district. The diner is situated directly at the sidewalk, on a corner lot at the intersection of Shrewsbury Street and Plum Street. Shrewsbury Street is a wide boulevard that extends from Belmont Street (State Route 9) to Interstate 290, which passes north to south through the city's downtown area.

Eight bays wide and four bays deep, the Boulevard Diner has a wood frame, a brick foundation, yellow porcelain enamel wall panels with red lettering, and an asphalt shingle roof. There is a one-story, brick kitchen addition with a flat roof wrapping the southern (rear) corner that does not compromise the integrity of the prefabricated diner. Entries are located in the narrow ends of the diner, beneath the overhangs of the barrel roof. At the eastern end, the entry is enclosed by a ca. 1950s steel and glass projecting vestibule, reached by exterior stairs that are finished with a stone retaining wall. At the western end of the diner the entry is reached through an enclosed staircase. Both entries contain wood glazed doors. Windows contain wood single-hung sash with orange-colored leaded glass in the transoms. On the exterior, metal awnings over the front windows and western entry are later additions.

The Boulevard Diner is known for its rooftop ornament, which includes an illuminated central clock and roof cresting executed in neon. In addition to the porcelain enamel wall panels, which read *BOULEVARD DINER*, signage on the diner includes an attached projecting sign that rises above the level of the roof and reads *DINER* in neon. The property includes a detached storage building of brick located off the southern (rear) corner of the diner.

On the interior, the diner has a full-length grill and food prep area and a full-length counter with a staff entrance at the eastern end. For customer seating, the diner has fourteen stools clad with white porcelain enamel at the counter and six wooden booths with tables along the front (north) wall. The barrel ceiling is wood, as are the diner's end walls. Behind the counter, cabinets and the refrigerator are faced in wood, steel, or porcelain enamel, and the grill hood is steel. The counter is marble, and both the counter apron and the front wall (beneath the windows) are finished with buff rectangular tiles with black accents. Similar buff tiles, with laminate accents, appear at the back bar. The floor features a two-toned pattern of small green tiles. The vinyl tiles at the counter footrest, however, are replacements. In the rear wall of the prefabricated diner, behind the counter, is a doorway to the brick addition that retains a wooden door with a panel of etched glass. The panel reads *BLVD Since 1936*

(continued)

United States Department of the Interior
National Park Service

**National Register of Historic Places
Continuation Sheet**

Section number 7/8 Page 2/1

**THE DINERS OF MASSACHUSETTS MPS
Boulevard Diner
Worcester (Worcester), MA**

Archaeological Description

No prehistoric sites are known on the property or in the general area (within one mile). In general, environmental characteristics of the property, especially its distance over 1000 feet from wetland resources, are not locationally favorable for most types of prehistoric sites. Given the above information, the small size of the parcel (less than one acre) and impacts associated with construction of the diner, its utilities and an outbuilding, a low potential exists for the recovery of prehistoric resources. There is also a low potential for locating historic archaeological resources on the property. No historic period landuse has been identified for the property prior to construction of the diner in 1936.

(end)

8. Statement of Significance

Boulevard Diner, Worcester (1936, MHC #2059) is a fine example of the traditional barrel-roofed diner produced by the Worcester Lunch Car Company, the state's premier diner builder and a major force in the design and construction of Massachusetts diners prior to World War II. The Boulevard Diner illustrates the diner form most closely associated with the history of Massachusetts diners since the 1920s. One of the better preserved examples of this form in the state, the Boulevard Diner retains a high degree of integrity, particularly on the interior, where the wood, tile, and marble finishes illustrate typical diner styling before the use of steel became popular. The diner is significant historically for its association with Fred Galanto, a diner operator of long standing in Worcester, and is the best preserved example in the city of a 1930s diner. Retaining integrity of location, design, setting, materials, workmanship, feeling, and association, Boulevard Diner meets Criteria A and C of the National Register of Historic Places at the state and local levels.

Boulevard Diner was associated with Worcester diner man Fred J. Galanto from 1936 to 1969. The diner name likely refers to Shrewsbury Street's importance as a visually prominent thoroughfare, which connects the eastern entrance to the city, at Belmont Street (State Route 9), with Union Station, at Washington Square in the city's downtown business district. Before the Worcester Lunch Car Company delivered the current diner to Galanto on June 16, 1936, he reportedly operated a six-stool lunch counter and general store on Shrewsbury Street. [MHC inventory form] The 1936 Worcester city directory lists Galanto as the operator of a lunch room. At the time, he lived at 14 Rena Street, located off Belmont Street roughly 1½ miles northeast of his business. By the mid-1940s, according to city directories, Galanto resided on Frank Street, one block west of the Rena Street address. The George family has owned and operated the diner since 1969. Jim George, whose father purchased the diner from Fred Galanto, completed a two-month interior rehabilitation in 1999 and plans to undertake a three-month exterior rehabilitation in the near future. [George interview]

(continued)

United States Department of the Interior
National Park Service

National Register of Historic Places
Continuation Sheet

Section number 8/9 Page 2/1

THE DINERS OF MASSACHUSETTS MPS
Boulevard Diner
Worcester (Worcester), MA

A number of Worcester company diners survive in excellent or good condition in Massachusetts, and chronicle the evolution of the company's diner designs, particularly from the 1920s through the 1950s. The company built 651 lunch cars and diners between 1907 and 1957 [Gutman, pp. 161 and 243], and updated, reconditioned, or remodeled an unknown number of their diners. The Boulevard Diner represents the traditional, wood-frame, New England barrel-roofed diner form for which the Worcester Lunch Car Company was best known. Of the approximately eighty-five diners built by the company between the early 1930s and World War II, all were shipped to destinations in New England. More than fifty of those diners were delivered to established or prospective diner owners in Massachusetts. [Worcester Lunch Car Company records]

Historically, both the building and operations of diners in New England have long associations with the city of Worcester. Following the introduction of the night lunch wagon to Worcester in 1884, the city quickly emerged as the lunch wagon capital of Massachusetts. At least five lunch wagon manufacturers, among them the Worcester Lunch Car Company, started up production there from 1889 to 1907. Perhaps due to the long-running popularity of lunch wagons, later diners, in the city, Worcester retains the largest number of prefabricated diners of any city or town in Massachusetts today. At least thirteen diners survive in Worcester, including those that are vacant or in storage; the Worcester Lunch Car Company manufactured nine of them. The Boulevard is the best example of a 1930s diner currently in operation in the city. Other 1930s diners in Worcester include Finely Fran's (1930s, now in storage), the oldest surviving Sterling-built diner in the nation. The Worcester-built Art's Diner (1930s), West Boylston Street, has been extensively remodeled, and the former Worcester Information Center (1933, Worcester #705) had been restored but was heavily damaged by fire in 1998.

(end)

9. Major Bibliographical References

- Interview with Jim George, The Boulevard Diner, Worcester, Mass. (August 8, 1999).
Gutman, Richard J. S. *American Diner Then and Now*. New York: Harper Collins Publishers, 1993.
MHC Inventory Form for Boulevard Diner, 155 Shrewsbury Street, Worcester (recorded by Susan Ceccacci), September 1983.
Diner Finder Deluxe: Massachusetts. Watertown, MA: Coffee Cup Publications, 1991.
The Worcester Directory (1936 through 1945, various years). Worcester: Sampson & Murdock Co., Publishers, years as noted.
Worcester Lunch Car Company Records (catalog number 1998.163). List of diners #701 through #799, compiled from file cards in the collection. Worcester Historical Museum.

(end)

United States Department of the Interior
National Park Service

National Register of Historic Places Continuation Sheet

Section number 10 Page 1

THE DINERS OF MASSACHUSETTS MPS
Boulevard Diner
Worcester (Worcester), MA

10. Geographical Data

Verbal Boundary Description

The boundary of the nominated property is shown on the accompanying detail of the city of Worcester assessors' map.

Boundary Justification

The boundary includes the entire parcel that is historically associated with the diner.

(end)

UNITED STATES DEPARTMENT OF THE INTERIOR
NATIONAL PARK SERVICE

NATIONAL REGISTER OF HISTORIC PLACES
EVALUATION/RETURN SHEET

REQUESTED ACTION: NOMINATION

PROPERTY Boulevard Diner
NAME:

MULTIPLE Diners of Massachusetts MPS
NAME:

STATE & COUNTY: MASSACHUSETTS, Worcester

DATE RECEIVED: 10/25/00 DATE OF PENDING LIST: 11/06/00
DATE OF 16TH DAY: 11/22/00 DATE OF 45TH DAY: 12/09/00
DATE OF WEEKLY LIST:

REFERENCE NUMBER: 00001394

REASONS FOR REVIEW:

APPEAL: N DATA PROBLEM: N LANDSCAPE: N LESS THAN 50 YEARS: N
OTHER: N PDIL: N PERIOD: N PROGRAM UNAPPROVED: N
REQUEST: N SAMPLE: N SLR DRAFT: N NATIONAL: N

COMMENT WAIVER: N

ACCEPT RETURN REJECT 11/22/00 DATE

ABSTRACT/SUMMARY COMMENTS:

**Entered in the
National Register**

RECOM./CRITERIA _____

REVIEWER _____ DISCIPLINE _____

TELEPHONE _____ DATE _____

DOCUMENTATION see attached comments Y/N see attached SLR Y/N



BOOTH
SERVICE

Boulevard Diner

DINER

WORLD
BOULEVARD PHARMACY

- Health Appliances & Equipment (Rent, Service)
- Laboratory Products
- Books & O. Supply Boxes
- Hospital & Dispensary Supplies
- To Make Your Prescription

Phone 755-0977

Boulevard Diner

155 Shrewsbury Street

Worcester

Diners of Massachusetts MPS

Photo: 1999

Neg: MHC

View S



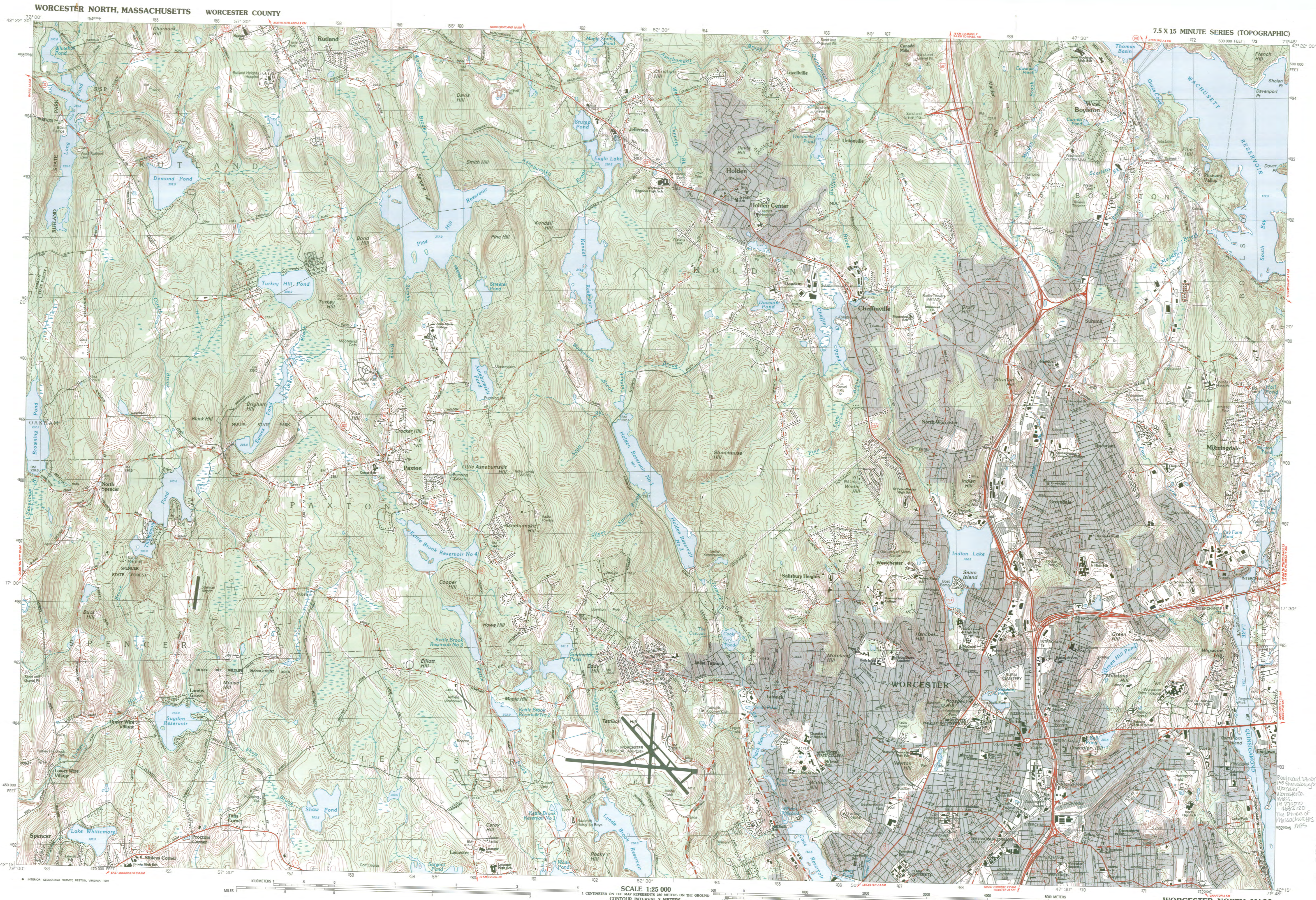
Boulevard Diner
155 Shrewsbury Street
Worcester

Diners of Massachusetts MPS

Photo: 1999

Neg: MHC

View E



42071-C7-TM-025

Worcester North

MASSACHUSETTS

1:25 000-scale metric topographic map

7.5 X 15 MINUTE QUADRANGLE SHOWING

- Contours and elevations in meters
- Highways, roads and other manmade structures
- Water features
- Woodland areas
- Geographic names

7.5 X 15 MINUTE SERIES (TOPOGRAPHIC)

GEOLOGICAL SURVEY

1983

Produced by the United States Geological Survey in cooperation with Massachusetts Department of Public Works

Controlled by photogrammetric methods from aerial photographs taken 1980. Field checked 1982. Map edited 1983

Supersedes Paxton and Worcester North 1:25,000-scale maps dated 1965 and 1974

Projection and 1000-meter grid, zone 19: Universal Transverse Mercator

10,000-foot grid ticks based on Massachusetts coordinate system, mainland zone. 1927 North American Datum

To place on the predicted North American Datum 1983 move the projection lines 6 meters south and 40 meters west as shown by dashed corner ticks

There may be private inholdings within the boundaries of the National or State reservations shown on this map

CONTOUR INTERVAL 3 METERS

NATIONAL GEODETIC VERTICAL DATUM OF 1929

CONTROL ELEVATIONS SHOWN TO THE NEAREST 0.1 METER

OTHER ELEVATIONS SHOWN TO THE NEAREST 0.3 METER

THIS MAP COMPLIES WITH NATIONAL MAP ACCURACY STANDARDS

Meters	Feet	DECLINATION DIAGRAM	ADJOINING MAPS
1	3.2808		1 Buxton
2	6.5617		2 Sterling
3	9.8425		3 North Brookfield
4	13.1234		4 Worcester
5	16.4042		5 Westborough
6	19.6850		6 Worcester South
7	22.9659		7 Worcester South
8	26.2467		8 Milford
9	29.5275		
10	32.8084		

To convert meters to feet multiply by 3.2808

To convert feet to meters multiply by 0.3048

UTM grid convergence (GNU and 1983 magnetic declination) at center of map. Diagram is approximate

FOR SALE BY U.S. GEOLOGICAL SURVEY
DENVER, COLORADO 80225, OR RESTON, VIRGINIA 22092

Topographic Map Symbols

Primary highway, hard surface	
Secondary highway, hard surface	
Light-duty road, hard or improved surface	
Unimproved road, trail	
Route marker: Interstate, U.S. State	
Railroad: standard gage; narrow gage	
Bridge: drawbridge	
Footbridge, overpass, underpass	
Built-up area: only selected landmark buildings shown	
House; barn; church; school; large structure	
Boundary:	
National; with monument	
State	
County; parish	
Civil township; precinct; district	
Unincorporated city; village; town	
National or State reservation; small park	
Land grant with monument; found section corner	
U.S. public lands survey: range, township; section	
Range, township; section line: location approximate	
Fence or field line	
Power transmission line, located tower	
Dam; dam with lock	
Canal; grave	
Campground; picnic area; U.S. location marker	
Windmill; water well; spring	
Mine shaft; prospect; well or cave	
Census; historical station; vertical station; spot elevation	
Contours: index; intermediate; supplementary; depression	
Distorted surface: strip mine, lava, sand	
Bathymetric contours: index; intermediate	
Personal lake and stream; intermittent lake and stream	
Rapid, large and small; falls, large and small	
Submerged marsh; marsh; swamp	
Land subject to controlled inundation; woodland	
Rock; meadow	
Orchard; vineyard	



The Commonwealth of Massachusetts

William Francis Galvin, Secretary of the Commonwealth
Massachusetts Historical Commission

October 23, 2000

Ms. Carol Shull
National Register of Historic Places
Department of the Interior
National Park Service
Mail Stop 2280, Suite 400
1849 C Street, NW
Washington, DC 20240

Dear Ms. Shull:

Enclosed please find the following nomination form:

Boulevard Diner, 155 Shrewsbury Street, Worcester (Worcester), MA
THE DINERS OF MASSACHUSETTS MPS

The nomination has been voted eligible by the State Review Board and has been signed by the State Historic Preservation Officer. The owners of the property in the Certified Local Government community of Worcester were notified of pending State Review Board consideration 60 to 90 days before the meeting and were afforded the opportunity to comment.

Sincerely,

A handwritten signature in cursive script that reads "Betsy Friedberg".

Betsy Friedberg
National Register Director
Massachusetts Historical Commission

enclosure

cc: Linda Manna / John Charamella
Jim George, Boulevard Diner
Kathleen Kelly Broomer, Preservation Consultant
Mayor Raymond Mariano, City of Worcester
Jody Kennedy Valade, Worcester CLG
James Igoe, Preservation Worcester
Bruce Bunke, Worcester Historical Commission
Charles Goddard, OPCD, City of Worcester