



SFT- Rice Co. Seawalls

Rice Co., KS

C. Hamilton; 7.91

negs: NM SHPO

looking west; bldgs. in background
outside site

1-4



NPS #93

7/28

3.F.T. - Rice Co. Segments
Rice Co., KS

C. Hamilton; 7.91
logs: NW - SWPO
looking west
2-4.



NPS # 93
7/30

S.F.T. - Rice Co. Segments

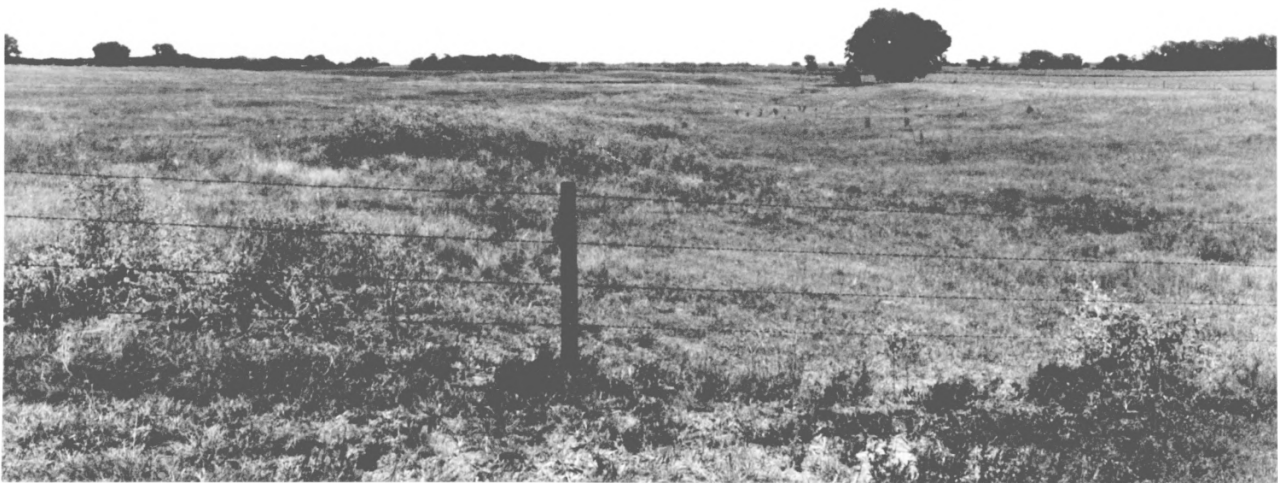
Rice Co., KS

C. Hamilton; 7.91

negs: Nin- SMPD

looking south

2-1



NPS#93
7/34

S.F.T. - Rice Co. Segments
Rice Co., KS
C. Hamilton, 7.91
negs: Wain SHPO
looking east from road
A-1.