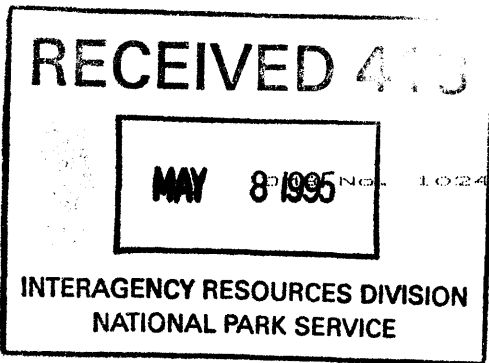


683



NPS Form 10-900
(Oct. 1990)

United States Department of the Interior
National Park Service

**NATIONAL REGISTER OF HISTORIC PLACES
REGISTRATION FORM**

=====

1. Name of Property

=====

historic name: Poindexter Park Historic District

other name/site number: N/A

=====

2. Location

=====

street & number: Bound roughly by West Pearl Street, Rose Street, Hunt Street, West Capitol Street and Clifton Street

not for publication: N/A

city/town: Jackson

vicinity: N/A

state: Mississippi
county: Hinds

code: MS
code: 049

zip code: 39203

=====

3. State/Federal Agency Certification

=====

As the designated authority under the National Historic Preservation Act of 1986, as amended, I hereby certify that this **nomination** request for determination of eligibility meets the documentation standards for registering properties in the National Register of Historic Places and meets the procedural and professional requirements set forth in 36 CFR Part 60. In my opinion, the property **meets** does not meet the National Register Criteria. I recommend that this property be considered significant nationally statewide **locally**. (___ See continuation sheet for additional comments.)

Kenneth H. P. Paul
Signature of certifying official

MAY 3, 1995
Date

Deputy State Historic Preservation Officer
State or Federal agency and bureau

In my opinion, the property ___ meets ___ does not meet the National Register criteria. (___ See continuation sheet for additional comments.)

Signature of commenting or other official Date

State or Federal agency and bureau

6. Function or Use

```

=====
Historic: DOMESTIC                Sub: single dwelling
          DOMESTIC                Sub: multiple dwelling
          COMMERCE/TRADE          Sub: specialty store
Current : DOMESTIC                Sub: single dwelling
          DOMESTIC                Sub: multiple dwelling
          COMMERCE/TRADE          Sub: specialty store
=====

```

7. Description

Architectural Classification:

Queen Anne
Colonial Revival
Craftsman

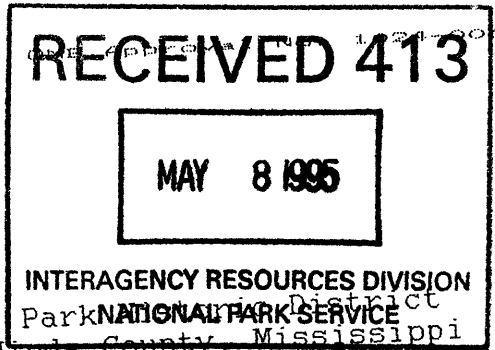
Other Description:

Shotgun
Double Shotgun
Modified Shotgun
Side L-plan
Center Hall Plan
Double-Pile Cottage
Saddlebag Cottage
Cubical Cottage
Composite Cottage
Homestead House
Modified Four-Square House
Modified Townhouse Plan
Bungalow
Cape

```

Materials: foundation BRICK                roof ASPHALT
           walls       BRICK                other  wooden porches
           WOOD:weatherboard

```



United States Department of the Interior
National Park Service

NATIONAL REGISTER OF HISTORIC PLACES
CONTINUATION SHEET

Section number 7 Page # 1 Poindexter Park Historic District
Jackson, Hinds County, Mississippi

NARRATIVE DESCRIPTION

The Poindexter Park Historic District is a small late-nineteenth and early-twentieth century neighborhood, located in an area historically known as "West Jackson" in the city of Jackson, Hinds County, Mississippi. The district includes most of the Poindexter Subdivision of 1875, bound by properties facing Hunt Street and West Capitol Street (formerly Clinton Road) on the north, Rose Street on the west, West Pearl Street (formerly Sharkey Street) on the south, and Clifton Street on the east.

The district is situated atop one of the few low hills that define the general topography of Jackson. Poindexter Park, the former location of the Poindexter estate, occupies the highest ground in the surrounding neighborhood and is the highest ground between it and the Old State Capitol Building at the terminus of Capitol Street to the east. Internal to the district, the topography is relatively flat in character.

The district is shaped as an irregular pentagon, within which is an equally irregular street plan. The eastern half of the district is characterized by streets running generally north-south without intermediate cross streets. The western half, by comparison, is characterized by blocks created by east-west streets (The east-west streets found in this portion of the district form the eastern end of the regular street grid of West Jackson). In the north-center of the district is an irregular quadrilateral block that contains Poindexter Park, the former grounds of the Poindexter estate following the subdivision of 1875; to its south is a square block containing Echols Junior High School. Together, these two blocks form a "break" between the irregular general street pattern of the eastern portion of the neighborhood, and the rigid gridded street pattern of West Jackson area on the west.

Buildings within the district represent historic land uses ranging from residential to commercial, civic/cultural and religious institutional uses. However, unlike most neighborhoods of a similar type in Jackson, the district possesses a significant collection of property types that cross class lines. Residential property types found here include modest shotguns, double shotguns and modified shotgun, middle-level types such as the side L-plan, composite cottage, double-pile cottage and the bungalow, and more well-to-do types such as the modified townhouse, four-square and the homestead houses. Historic architectural styles found in Poindexter Park include Italianate, Queen Anne, Colonial Revival, Spanish Colonial Revival, Craftsman, and Minimalist Traditional influences.

An inventory of the properties contained within the Poindexter Park Historic District follows. The properties inventoried which contribute to the historical character of design, workmanship, and materials found in

United States Department of the Interior
National Park Service

NATIONAL REGISTER OF HISTORIC PLACES
CONTINUATION SHEET

Section number 7 Page # 9 Poindexter Park Historic District
Jackson, Hinds County, Mississippi

=====

710 Deer Park Street, continued:

time. Windows are 2/2 DH replacements. Partial-width, shed-roofed porch, supported by replacement wrought iron posts. Entrance has a solid replacement door. (C)

030 720 Deer Park St.

One-story, three-bay, frame cubical cottage with Craftsman influence, built ca. 1915-20. Hip and gable roof with exposed rafter tails, covered with asphalt shingles. Exterior wall surfaces have radius-edge weatherboard siding. Windows are 4/4 DHSL. Porch enclosed ca. 1975-80. Entrance has a replacement solid replacement door. (C)

031 721 Deer Park St.

One-story, three-bay, frame gable-front double-pile cottage, built ca. 1920 and modified with Minimalist Traditional influence ca. 1970-75. Complex gable roof, covered by asphalt shingles. Exterior wall surfaces have Masonite siding; brick wainscoting added ca. 1970-75. Windows are 2/2 DH replacements. Partial-width, gable-roofed porch supported by replacement wrought iron posts. Entrance has a replacement solid replacement door. (NC*)

032 731 Deer Park St.

One-story, three-bay, frame gable-front double-pile cottage, built ca. 1920 and modified with Modernist Traditional influence ca. 1970-75. Gable roof with plain projecting eaves, covered with asphalt shingles. Exterior wall surfaces have Masonite siding. Windows are 2/2 DH replacements. One-bay, gable-roofed porch, supported by wrought iron replacement posts. Entrance has a replacement solid door. (NC*)

033 735 Deer Park St.

One-story, two-bay, frame gable-front double-pile cottage, built ca. 1920 and modified with Modernist Traditional influence ca. 1970-75. Gable roof with exposed rafter tails, covered with asphalt shingles. Exterior wall surfaces have Masonite siding, with a brick wainscoting on the front facade. Windows are 2/2 DH replacements. Partial-width, incised porch supported by replacement wrought iron posts. Entrance has a solid replacement door. (NC*)

(8-86)

United States Department of the Interior
National Park Service

NATIONAL REGISTER OF HISTORIC PLACES
CONTINUATION SHEET

Poindexter Park Historic District

Section number 7 Page # 10 Jackson, Hinds County, Mississippi

- 034 803 Deer Park St.
Two-story, three-bay, frame, stacked modified shotgun with Colonial Revival influence, built ca. 1915. Gable roof with box cornice, covered with concrete shingles. Exterior wall surfaces have weatherboard siding. Windows are 1/1 DHSL. Full-width, two-story, hip-roofed porch, supported by an original brick pier and simple replacement posts. Entrance is obscured. (C)
- 035 807 Deer Park St.
One-story, two-bay, frame gable-front, double-pile cottage, built ca. 1920-25 and modified with Modernist Traditional influence ca. 1970-75. Gable roof, covered with asphalt shingles. Exterior wall surfaces have Masonite siding. Windows are 2/2 DH replacements. Partial-width, incised porch, supported by replacement wrought iron posts. Entrance has a single-light replacement door. (NC*)
- 036 811 Deer Park St.
One-story, two-bay, frame gable-front double-pile cottage, built ca. 1920-25 and modified with Modernist Traditional influence ca. 1970-75. Gable roof with plain projecting eaves, covered with asphalt shingles. Exterior wall surfaces have Masonite siding; facade has brick veneer wainscoting. Windows are 2/2 DH replacements, some in pairs. One-bay, incised porch supported by wrought iron replacement posts. Entrance has a single-light replacement door. (NC*)
- 037 815 Deer Park St.
One-story, five-bay, frame side-L ranch with Modernist Traditional influence, built ca. 1950-55. Complex gable roof, covered with asphalt shingles. Exterior wall surfaces have Masonite siding; facade has brick veneer wainscoting. Windows are 2/2 DH replacements. Partial-width, incised porch supported by wrought iron replacement posts. Entrance is obscured. (NC)
- 038 821 Deer Park St.
One-story, five-bay, frame side-L ranch with Modernist Traditional influence, built ca. 1950-55. Complex gable roof and plain projecting eaves, covered with asphalt shingles. Exterior wall surfaces have Masonite siding. Windows are 2/2 DH replacements. Partial-width, incised porch, supported by wrought iron replacement posts. Entrance has a solid replacement door. (NC*)

United States Department of the Interior
National Park Service

NATIONAL REGISTER OF HISTORIC PLACES
CONTINUATION SHEET

Poindexter Park Historic District

Section number 7 Page # 11 Jackson, Hinds County, Mississippi

039 827 Deer Park St.

One-story, five-bay, frame side-L ranch with Modern Traditional influence, built ca. 1950-55. Complex gable roof with plain projecting eaves, covered with asphalt shingles. Exterior wall surfaces have Masonite siding; facade has brick veneer wainscoting. Windows are 2/2 DH replacements. Partial-width, incised porch, supported by wrought iron replacement posts. Entrance has a solid replacement door. (NC)

040 833 Deer Park St.

One-story, five-bay, frame side-L ranch with Modern Traditional influence, built ca. 1950-55. Complex gable roof with plain projecting eaves, covered with asphalt shingles. Exterior wall surfaces have Masonite siding; facade has a brick veneer wainscot. Windows are 2/2 DH replacements. Partial-width, incised porch, supported by wrought iron replacement posts. Entrance has a solid replacement door. (NC)

041 835 Deer Park St.

One-story, three-bay, frame side-L ranch with Modern Traditional influence, built ca. 1950-55. Complex gable roof with plain projecting eaves, covered with asphalt shingles. Exterior wall surfaces have Masonite siding; facade has a brick veneer wainscot. Windows are 2/2 DH replacements. Partial-width, incised porch, supported by wrought iron replacement posts. Entrance has a solid replacement door. (NC)

042 837 Deer Park St.

One and one-half-story, four-bay, frame Cape with Minimal Traditional influence, built ca. 1940-45. Side gable roof with boxed cornice, covered with asphalt shingles. Exterior wall surfaces have Masonite shingle siding. Windows are 1/1 DHSL. Entrance contained in one-bay, gable roofed vestibule; the door is obscured. (C)

043 847 Deer Park St.

One-story, three-bay, frame side-L ranch with Modern Traditional influence, built ca. 1950-55 and modified ca. 1970-75. Complex gable roof, with plain projecting eaves covered with asphalt shingles. Exterior wall surfaces have Masonite siding; front facade has a brick veneer wainscot. Windows are 2/2 DH replacements. Partial-width, incised porch, supported by wrought iron posts. Entrance has a solid replacement door. (NC)

(8-84)

United States Department of the Interior
National Park Service

NATIONAL REGISTER OF HISTORIC PLACES
CONTINUATION SHEET

Poindexter Park Historic District

Section number 7 Page # 12 Jackson, Hinds County, Mississippi

- 044 914 Deer Park St.
One-story, four-bay, frame composite cottage with Queen Anne and Colonial Revival influence, built ca. 1900-05. Complex hip and gable roof with box cornice, covered with asphalt shingles; gable ends are closed. Exterior wall surfaces have Masonite siding. Windows are obscured. Partial-width, hip roofed porch supported by turned posts. Entrance is obscured. (C)
- 045 920 Deer Park St.
One-story, three-bay, frame composite cottage with Colonial Revival influence, built ca. 1910-15 and modified ca. 1970-75. Complex hip and gable roof with boxed cornice, covered with asphalt shingles. Exterior wall surfaces have Masonite siding. Windows are obscured. Partial-width, hip roofed porch supported by plain posts. Entrance is obscured. (C)
- 046 928 Deer Park St.
One-story, four-bay, frame side L-plan cottage with Colonial Revival influence, built ca. 1900, and modified with Spanish Colonial Revival influence, ca. 1930-35. Complex gable roof with box cornice, covered with asphalt shingles; gable ends are closed. Exterior wall surfaces have stucco veneer added ca. 1930-35. Windows are 2/2 DHSL. Partial-width, hip roofed porch supported by elliptical and semi-circular arched arcade on stucco bases. Entrance is obscured. (C)
- 047 930-932 Deer Park St.
One-story, four-bay, frame double-shotgun with Craftsman influence, built ca. 1920-25. Gable roof with exposed rafter tails, covered with asphalt shingles. Exterior wall surfaces have novelty siding. Windows are 6/6 DHSL. Two, one-bay, gable roofed porches supported by box columns. Entrance doors are non-extant. (C)
- 048 935 Deer Park St.
One-story, three-bay, frame double-pile cottage, built ca. 1920 and modified with Modernist Traditional influence ca. 1970-75. Gable roof with plain projecting eaves, covered with asphalt shingles. Exterior wall surfaces have Masonite siding. Windows are 2/2 DH replacements. Partial-width, gable roofed porch, supported by wrought iron replacement posts. Entrance has a solid replacement door. (NC*)

United States Department of the Interior
National Park Service

NATIONAL REGISTER OF HISTORIC PLACES
CONTINUATION SHEET

Section number 7 Page # 13 Poindexter Park Historic District
Jackson, Hinds County, Mississippi

=====

049 939 Deer Park St.

One-story, two-bay, frame modified cubical cottage with Craftsman influence, built ca. 1920-25. Hip roof with exposed rafter tails, covered with asphalt shingles. Exterior wall surfaces have asbestos siding. Partial-width, incised porch, supported by battered box piers on brick bases with a paneled balustrade. Entrance has a six-light, three-panel door. (C)

HUNT STREET

050 912 Hunt St.

One-story, three-bay, frame modified cubical cottage with Queen Anne and Colonial Revival influence, built ca. 1900. Hip and gable roof with box cornice, covered with asphalt shingles. Exterior wall surfaces have novelty siding. Windows are 2/2 DHSL. Full-width L-plan, hip roofed porch, supported by turned posts with spindle brackets. Entrance has Queen Anne screen door; main front door not visible. (C)

051 914 Hunt St.

One-story, five-bay, frame modified cubical cottage with Colonial Revival and Craftsman influence, built ca. 1900. Hip roof with box cornice, covered with asphalt shingles; hip-roofed dormer has three 6/6 DHSL. Exterior wall surfaces have Masonite siding. Windows are 4/4 DHSL. Full-width, incised porch supported by battered box columns on brick bases. Entrance has a half-light, three-panel door with two-light transom. (C)

052 915 Hunt St.

Two-story, five-bay, raised bungalow with Craftsman influence, built ca. 1920-25, and altered altered ca. 1970-75. Side gable roof covered with asphalt shingles. Exterior wall surfaces have vinyl siding. Windows are 2/2 DH replacements. Partial-width, incised porch has been enclosed. Entrance recessed into former porch space, has a solid replacement door. (NC)

053 917 Hunt St.

One-story, three-bay, frame bungalow with Craftsman influence, built ca. 1915-20. Gable roof with exposed rafter tails, covered with asphalt shingles. Exterior wall surfaces have novelty siding. Windows are 6/6 DHSL. Partial-width, incised porch partially enclosed ca. 1970-75, supported by box piers. Entrance has a solid replacement door. (C)

(8-84)

United States Department of the Interior
National Park Service

NATIONAL REGISTER OF HISTORIC PLACES
CONTINUATION SHEET

Poindexter Park Historic District

Section number 7 Page # 14 Jackson, Hinds County, Mississippi

054 928 Hunt St.

One-story, four-bay, frame transitional cubical cottage with Queen Anne and Colonial Revival influence, built ca. 1900. Hip and gable roof with box cornice, covered with asphalt shingles; gable end is closed and undercut, with staggered butt shingles and semi-circular gable ornament. Exterior wall surfaces have novelty siding. Windows are 1/1 DHS. Full-width, hip roofed porch with dentiled frieze, supported by columns with Doric capitals. Entrance is obscured. (C)

055 933 Hunt St.

One-story, four-bay, frame modified composite cottage with Colonial Revival influence, built ca. 1910-15. Complex hip and gable roof, covered with asphalt shingles. Exterior wall surfaces have Masonite siding. Windows are 2/2 DH replacements. Partial-width, partially-incised porch supported by with paneled box piers on raised brick bases; partially enclosed ca. 1970-75. Entrance has a solid replacement door. (C)

056 936 Hunt St.

One-story, three-bay, frame modified side L-plan cottage with Colonial Revival influence, built ca. 1900. Complex gable roof with boxed cornice, covered with asphalt shingles. Exterior wall surfaces have novelty siding. Windows are 2/2 DH replacements, some in pairs. Full-width, hip roofed porch supported by box columns on raised brick bases. Entrance has a solid replacement door. (C)

057 938 Hunt St.

One-story, two-bay, frame modified shotgun with Colonial Revival influence, built ca. 1915. Gable roof with boxed cornice, covered with asphalt shingles. Exterior wall surfaces have novelty siding. Windows are 2/2 DHS. Full-width, hip-roofed porch supported by box columns. Entrance is obscured. (C)

058 939 Hunt St.

One-story, four-bay, frame composite cottage with Queen Anne influence, built ca. 1900-05. Complex hip and gable roof, covered with asphalt shingles; gable end has staggered butt shingles. Exterior wall surfaces have weatherboard and asbestos siding. Windows are 2/2 DH replacements. Partial-width, hip-roofed porch, supported by paneled box columns on raised brick bases; porch partially enclosed ca. 1970. Entrance has a solid replacement door. (C)

United States Department of the Interior
National Park Service

NATIONAL REGISTER OF HISTORIC PLACES
CONTINUATION SHEET

Poindexter Park Historic District

Section number 7 Page # 15 Jackson, Hinds County, Mississippi

=====

- 059 942 Hunt St.
One-story, four-bay, frame side-L plan cottage with Colonial Revival and Craftsman influence, built ca. 1900-05. Complex gable roof with box cornice, covered with asphalt shingles; gable ends are closed. Exterior wall surfaces have novelty siding. Windows are 2/2 DHSL. Partial-width, hip-roofed porch supported by battered box columns on raised brick bases. Entrance has a five-panel door. (C)
- 060 943 Hunt St.
One-story, four-bay, frame cubical cottage with Queen Anne influence, built ca. 1910-15. Hip and gable roof with boxed cornice, covered with asphalt shingles; gable dormer has louvered vent. Exterior wall surfaces have ship lap siding. Windows are 1/1 DHSL. Partial-width, hip roofed porch, supported by turned posts. Entrance has a four-light, three-panel door. (C)
- 061 947 Hunt St.
One-story, four-bay, frame cubical cottage with Colonial Revival influence, built ca. 1910-15. Complex hip and gable roof with box cornice, covered with asphalt shingles. Exterior wall surfaces have ship lap siding. Windows are obscured. Partial-width, hip roofed porch supported by box columns with a block spindle balustrade. Entrance is obscured. (C)
- 062 950 Hunt St.
One-story, two-bay, frame gable-front double-pile cottage with Colonial Revival influence, built ca. 1900. Gable roof with box cornice and cornice returns, covered with asphalt shingles. Exterior wall surfaces have novelty siding; facade has Masonite siding. Windows are 2/2 DHSL, some in pairs. Full-width, gable roofed porch supported by box columns. Entrance is obscured. (C)
- 063 951 Hunt St.
One-story, three-bay, frame bungalow with Craftsman influence, built ca. 1915-20. Gable roof with jerkinhead and exposed rafter tails, covered with asphalt shingles. Exterior wall surfaces have stucco veneer. Windows are 4/1 Craftsman DHSL. Full-width, gable-roofed porch with jerkinhead, supported by box columns. Entrance has a four-light three-panel door. (C)

(8-86)

United States Department of the Interior
National Park Service

NATIONAL REGISTER OF HISTORIC PLACES
CONTINUATION SHEET

Poindexter Park Historic District

Section number 7 Page # 16 Jackson, Hinds County, Mississippi

064 952 Hunt St.

One-story, four-bay, frame cubical cottage with Colonial Revival influence, built ca. 1910. Hip and gable roof with box cornice, covered with asphalt roll roofing. Exterior wall surfaces have Masonite shingle siding. Windows are 1/1 DHSL. Full-width, hip roofed porch, supported by box columns. Entrance has a four-panel door. (C)

065 953 Hunt St.

One-story, five-bay, frame duplex bungalow with Craftsman influence, built ca. 1915-20. Side gable roof with exposed rafter tails, covered with asphalt shingles. Exterior wall surfaces have stucco veneer. Windows are 4/1 Craftsman DHSL. Partial-width, gable roofed porch, supported by box piers. Entrance has a four-light, three-panel door. (C)

066 954 Hunt St.

One-story, four-bay, frame duplex cubical cottage with Colonial Revival influence, built ca. 1915-20. Hip and gable roof with box cornice, covered with asphalt shingles. Exterior wall surfaces have Masonite shingle siding. Windows are 1/1 DHSL. Full-width, hip roofed, porch supported by columns with Doric capitals. Entrance has a five-panel door. (C)

067 956 Hunt St.

One-story, three-bay, frame bungalow with Craftsman influence, built ca. 1925. Complex gable roof with jerkinheads, exposed rafter tails and purlins, covered with asphalt shingles. Exterior wall surfaces have radius-edge weatherboard siding. Windows are Craftsman 4/1 DHSL. Partial-width, gable-roofed porch with jerkinhead, supported by box columns. Entrance has a Craftsman nine-light, one-panel door. (C)

LEMON STREET

068 160 Lemon St.

One-story, four-bay, frame composite cottage with Queen Anne influence, built ca. 1900; Side shed addition built ca. 1920-25. Complex hip and gable roof, with box cornice, covered with asphalt shingles; gable end

United States Department of the Interior
National Park Service

NATIONAL REGISTER OF HISTORIC PLACES
CONTINUATION SHEET

Poindexter Park Historic District

Section number 7 Page # 17 Jackson, Hinds County, Mississippi

=====

160 Lemon St., continued:

has hexagonal and sawtooth shingles. Exterior wall surfaces have weatherboard and ship lap siding. Windows are obscured. Partial-width, L-plan, hip roofed porch, supported by paired turned posts on paneled bases. Entrance is obscured. (C)

MELBA STREET

069 511 Melba St.

One-story, three-bay, frame bungalow with Craftsman influence, built ca. 1920-25. Gable roof with exposed rafter tails, fascia and kneebrace brackets, covered with asphalt shingles. Exterior wall surfaces have Masonite siding. Windows are Craftsman 4/1 DHSL. Partial-width porch covered with a gable roof, supported by box columns. Entrance is obscured. (C)

070 513 Melba St.

One-story, three-bay, frame bungalow with Craftsman influence, built ca. 1915. Gable roof with exposed rafter tails and kneebrace brackets, covered with asphalt shingles. Exterior wall surfaces have novelty siding. Windows are obscured. Partial-width, partially-incised gable-roofed porch supported by battered box columns on stuccoed bases. Entrance is obscured. (C)

071 514 Melba St.

One-story, three-bay, frame single-pen with Craftsman influence, built ca. 1905-10; side one-bay addition built ca. 1920-25. Side-gable roof, covered with asphalt shingles. Exterior wall surfaces have weatherboard siding. Windows are obscured. Partial-width, shed-roofed porch supported by paired posts on replacement brick piers. Entrance is obscured. (C)

072 515 Melba St.

One-story, four-bay, frame side-L plan cottage with Queen Anne and Colonial Revival influence, built ca. 1900. Complex gable roof with box cornice, covered with asphalt shingles; gable ends are closed. Exterior wall surfaces have novelty siding. Windows are obscured. Partial-width, shed-roofed porch supported by box columns. Entrance is obscured. (C)

United States Department of the Interior
National Park Service

NATIONAL REGISTER OF HISTORIC PLACES
CONTINUATION SHEET

Poindexter Park Historic District

Section number 7 Page # 20 Jackson, Hinds County, Mississippi

155 Minerva St., continued:

Complex gable roof with box cornice and cornice returns, covered with asphalt shingles; gable has ocular vent and scroll sawn brackets. Exterior wall surfaces have aluminum siding. Windows are obscured. Partial-width, shed-roofed porch, supported by chamfered posts with sawn brackets. Entrance is obscured. (C)

083 160 Minerva St.

One-story, three-bay, frame cubical cottage with Queen Anne and Colonial Revival influence, built ca. 1905-10. Hip roof with plain projecting eaves, covered with asphalt shingles; a hip roofed dormer contains a louvered vent. Exterior wall surfaces have weatherboard siding. Windows are 1/1 DHSL. Full-width, L-plan, shed-roofed porch, supported by turned posts. Entrance has a multi-light door with transom and 3/4 length sidelights. (C)

084 161 Minerva St.

Two-story, four-bay, brick veneered four-square apartment building with Modern Traditional influence, built ca. 1970. Low hip roof, covered with asphalt shingles. Windows are 6/6 DHSL. Two-story, full-width incised porch, supported by plain post. Entrances have six-panel doors. (NC)

085 166 Minerva St.

One-story, three-bay, frame modified side L-plan cottage with Colonial Revival influence, built ca. 1900. Complex gable roof, covered with asphalt shingles; semi-circular arched window in gable end. Exterior wall surfaces have weatherboard siding. Windows are obscured; in gable end is a triplet 1/1 DHSL with dentiled frieze. Partial-width, L-plan, hip roofed porch, supported by brick piers. Entrance has a solid door with a single-light transom. (C)

086 172 Minerva St.

One-story, four-bay, frame duplex cubical cottage with Queen Anne influence, built ca. 1900. Hip roof with box cornice, covered with asphalt shingles; gable-roofed dormer has octagonal and sawtooth shingles. Exterior wall surfaces have ship lap siding. Windows are 1/1 DHSL. Partial-width, hip-roofed porch, supported by turned posts with a block spindle balustrade. Entrance is obscured. (C)

United States Department of the Interior
National Park Service

NATIONAL REGISTER OF HISTORIC PLACES
CONTINUATION SHEET

Poindexter Park Historic District

Section number 7 Page # 21 Jackson, Hinds County, Mississippi

087 180 Minerva St.

One-story, three-bay, frame composite cottage with Colonial Revival influence, built ca. 1910-15. Complex hip and gable roof with box cornice, covered with asphalt shingles; gable ends are closed. Exterior wall surfaces have ship lap siding. Windows are 1/1 DHSL. Partial-width, partially enclosed L-plan, hip-roofed porch, supported by columns with Doric capitals. Entrance is obscured. (C)

088 181 Minerva St.

Two-story, two-bay, frame modified townhouse with Colonial Revival influence, built ca. 1900, substantially altered ca. 1980-85. Hip roof with exposed rafter tails, covered with asphalt shingles. Exterior wall surfaces have Masonite siding. Windows are 2/2 DH replacements, in shortened reveals. One-bay, replacement gable-roofed porch, supported by altered fluted columns with Doric capitals. Entrance has a replacement four-panel and fan light door. (NC)

089 186 Minerva St.

One-story, three-bay, frame modified side L-plan with Colonial Revival influence, built ca. 1900 with Craftsman influence added ca. 1915. Complex gable roof with box cornice, covered with asphalt shingles; front gable end has a semi-circular arch window. Exterior wall surfaces have weatherboard siding. Windows are 1/1 DHSL; beneath gable end is a triple 1/1 DHSL with dentiled frieze. Partial-width, L-plan, hip-roofed porch, supported by brick piers added ca. 1915. Entrance is obscured. (C)

090 189 Minerva St.

Two-story, three-bay, frame modified townhouse with Colonial Revival influence, built ca. 1900. Substantial alterations made ca. 1980-85. Hip roof with exposed rafter tails, covered with asphalt shingles. Two-story, canted bay projection to one side of facade. Exterior wall surfaces have Masonite siding. Windows are 2/2 DH replacements in shortened reveals. Partial-width, hip-roofed porch supported by altered fluted columns with Doric capitals; porch is part of original L-plan porch. Entrance is obscured. Side entry facing Pearl Street has elliptical arched transom, 1/2-length sidelights, paneled bulkheads, and engaged, fluted pilasters with Corinthian capitals. (NC)

United States Department of the Interior
National Park Service

NATIONAL REGISTER OF HISTORIC PLACES
CONTINUATION SHEET

Poindexter Park Historic District

Section number 7 Page # 22 Jackson, Hinds County, Mississippi

=====

NEAR STREET

091 101 Near St. Echols School
Two-story, thirty-eight-bay, brick and cast stone masonry veneer school building with Craftsman influence, built ca. 1915 and altered with Modern Traditional additions ca. 1955-60. Flat and hip roofs behind a plain parapet wall capped with cast stone coping. Windows are 2/2 metal-frame DHSL, some in pairs, and some in strips of eleven set within cast stone surround. Entrance spanned by a one-bay, flat canopy supported by metal posts. Entrance has three 1/2-light doors, each topped with a nine-light transom.
(NC)

WEST PEARL STREET

092 503 West Pearl St.
One-story, three-bay, brick veneered bungalow with Craftsman influences, built ca. 1920. Hip and gable roof with exposed rafter tails, covered with asphalt shingles. Windows are Craftsman 4/1 DHSL, some in pairs. Partial-width, incised porch, supported by columns with Doric capitals raised on brick bases. Entrance has a Craftsman four-light, three-panel door. (C)

093 505 West Pearl St.
One-story, three-bay, brick veneered bungalow with Craftsman influence, built ca. 1920. Hip and gable roof with exposed rafter tails, covered with asphalt shingles. Windows are Craftsman 4/1 DHSL. Partial-width, incised porch supported by columns with Doric capitals raised on brick bases. The entrance is obscured. (C)

094 511 West Pearl St.
One-story, four-bay, frame side T-plan cottage with Queen Anne and Colonial Revival influence, built ca. 1905. Complex gable roof covered by rolled asphalt roofing; gable end is closed and has sawtooth and butt shingles. Exterior wall surfaces have weatherboard siding. Windows are obscured. Partial-width, hip-roofed porch supported by plain posts. The entrance is obscured. (C)

095 517 West Pearl St.
One-story, two-bay, frame shotgun, built ca. 1900. Hip roof with box cornice, covered by asphalt shingles. Exterior wall surfaces have weatherboard siding. Windows are 4/4 DHSL. Full-width, incised porch, supported by simple posts. Entrance is obscured. (C)

United States Department of the Interior
National Park Service

NATIONAL REGISTER OF HISTORIC PLACES
CONTINUATION SHEET

Poindexter Park Historic District

Section number 7 Page # 24 Jackson, Hinds County, Mississippi

101 607-609 West Pearl St.

One-story, four-bay, frame double shotgun with Craftsman influence, built ca. 1920. Gable roof with exposed rafter tails covered with asphalt shingles. Exterior wall surfaces have radius-edge weatherboard siding. Windows are Craftsman 4/1 DHSL. Two, one-bay gable roofed porches, supported by brick piers. Entrance has a Craftsman four-light, three-panel door. (C)

102 611-613 West Pearl St.

One-story, four-bay, frame double shotgun with Craftsman influence, built ca. 1910-15. Gable roof with exposed rafter tails, covered with asphalt shingles. Exterior wall surfaces have radius-edge weatherboard siding. Windows are Craftsman 4/1 DHSL. Two, one-bay, gable roofed porches supported by brick piers. Entrance has a Craftsman four-light, three-panel door. (C)

103 615-617 West Pearl St.

One-story, four-bay, frame double shotgun with Craftsman influence, built ca. 1920. Gable roof with exposed rafter tails, covered with asphalt shingles. Exterior wall surfaces have radius-edge weatherboard siding. Windows are Craftsman 4/1 DHSL. Two, one-bay, gable roofed porches supported by brick piers. Entrance has a Craftsman four-light, three-panel door. (C)

104 619 West Pearl St. Summers Hotel

Two-story, six-bay, brick veneered center-loaded hotel building with Colonial Revival influence, built ca. 1915-20 and altered ca. 1960-65. Flat roof behind plain parapet wall topped with a cast stone coping. Portions of the original sheet metal cornice remain on side facades. Windows are 6/1 DHSL and 2/2 DH replacements. Two-story porches enclosed ca. 1960-65. Entrances have nine-light, single-panel replacement doors. (NC)

105 620 West Pearl St.

One-story, three-bay, frame composite cottage with Colonial Revival influence, built ca. 1900. Complex hip and gable roof with closed gable end and box cornice, covered with roll asphalt roofing. Exterior wall surfaces have weatherboard siding. Windows are Queen Anne multi-light/1 DHSL, some in pairs. Full-width, L-plan, hip-roofed porch, supported by columns with Doric capitals. Entrance door is obscured. (C)

United States Department of the Interior
National Park Service

NATIONAL REGISTER OF HISTORIC PLACES
CONTINUATION SHEET

Poindexter Park Historic District

Section number 7 Page # 25 Jackson, Hinds County, Mississippi

=====

- 106 627 West Pearl St.
One-story, three-bay, frame center-hall cottage with Colonial Revival and added Craftsman influence, built ca. 1900-1905. Side gable roof with box cornice and cornice returns, covered with asphalt shingles. Exterior wall surfaces have weatherboard siding. One-bay, gable roofed porch, supported by replacement wrought iron posts. Entrance has a nine-light, three-panel door with transom and 1/2 length sidelights. (C)
- 107 637 West Pearl St.
One-story, four-bay, brick veneered masonry strip commercial building with Mansard Revival influence, built ca. 1970-75. Flat and Mansard roofs, covered with asphalt shingles. Storefront has single-light fixed display windows, flanking a full-light metal-frame door. (NC)
- 108 712 West Pearl St.
One-story, three-bay, frame composite cottage with Colonial Revival influence, built ca. 1900. Complex hip and gable roof with box cornice, covered by asphalt shingles; ocular vents in gable ends. Exterior wall surfaces have novelty siding. Windows are 1/1 DHSL. Full-width, L-shaped porch, covered with a hip roof, supported by replacement wrought iron post. Entrance is obscured. (C)
- 109 719-721 West Pearl St.
One-story, nine-bay, three-unit brick masonry commercial block with Colonial Revival and Craftsman influence, built ca. 1920. Flat roof behind plain parapet wall with cast stone cornice and acroteria with finials. The attic area has a recessed sign panel with cast stone corner blocks. Westernmost storefront modified ca. 1930 with single-light display window and full-light wood-frame door, topped with a transom strip; other storefronts modified with exterior plywood in ca. 1980-85, one retains its transom strip. (C)
- 110 726 West Pearl St.
One-story, three-bay, frame saddlebag with Colonial Revival influence, built ca. 1905. Side gable roof, covered with asphalt shingles. Exterior wall surfaces have weatherboard siding. Windows are 6/6 DHSL. Three-quarter-width, hip-roofed porch, supported by columns with Doric capitals. Entrance has a solid replacement door, surrounded with a transom and sidelights. (C)

United States Department of the Interior
National Park Service

NATIONAL REGISTER OF HISTORIC PLACES
CONTINUATION SHEET

Poindexter Park Historic District

Section number 7 Page # 26 Jackson, Hinds County, Mississippi

- =====
111 730 West Pearl St.
One-story, four-bay, frame modified side-L plan cottage with Queen Anne influence, built ca. 1890-95. Complex gable and hip roof with box cornice, covered by asphalt shingles. Exterior wall surfaces have Masonite siding. Windows are 2/4 oversized DHSL on facade; others are 2/2 DHSL. Partial-width, L-plan, hip-roofed porch supported by turned post. Entrance is obscured. (C)
- 112 734 West Pearl St.
One-story, three-bay, frame modified shotgun with Craftsman influence, built ca. 1915. Gable roof with exposed rafter tails, covered by asphalt shingles. Exterior wall surfaces have weatherboard siding. Windows are 4/4 DHSL. Full-width, incised porch supported by box columns. Entrance is obscured. (C)
- 113 803 West Pearl St.
Two-story, fourteen-bay, brick veneered side U-plan apartment building, built ca. 1970-75. Hip roof, covered with asphalt shingles. Windows are 2/2 metal frame DHSL. Two-story, U-shaped porch, supported by steel posts. Entrances have solid doors. (NC)
- 114 812 West Pearl St.
One-story, five-bay, brick veneered strip commercial block, built ca. 1960-65, with side two-bay addition ca. 1970-75. Flat and Mansard roofs, covered with wood shake shingles. Storefront has single-light fixed display windows. Entrances have solid doors. (NC)
- 115 815 West Pearl St.
One-story, four-bay, frame center hall-plan cottage with Colonial Revival influence, built ca. 1900. Side-gable roof with box cornice and cornice returns, covered by asphalt shingles. Exterior wall surfaces have replacement Masonite siding. Windows are replacement 4-4 metal casements with two-light transom. Full-width incised porch partially enclosed ca. 1980-85, supported by replacement wrought iron posts. The entrance is obscured. (C)

United States Department of the Interior
National Park Service

NATIONAL REGISTER OF HISTORIC PLACES
CONTINUATION SHEET

Poindexter Park Historic District

Section number 7 Page # 27 Jackson, Hinds County, Mississippi

- 116 816 West Pearl St.
One-story, three-bay, brick veneered modified English cottage with Tudor Revival and Minimal Traditional influence, built ca. 1940. Side-gable roof with a box cornice and flush eaves, covered by asphalt shingles; gable ends are half-timbered and stuccoed. Windows are 6/6 DHSL. One-bay, gable-roofed porch supported by wrought iron posts. Entrance has a three-light replacement door. (C)
- 117 820 West Pearl St.
One story, three-bay, frame saddlebag cottage with Craftsman influence, built ca. 1910-15. Side gable roof, covered with asphalt shingles. Exterior wall surfaces have added brick veneer siding. Windows are 1/1 DH replacements. Full-width, shed roofed porch supported by replacement brick piers on brick bases. Entrance has a six-panel door. One entrance has been enclosed. (NC)
- 118 821 West Pearl St.
One-story, six-bay, frame, side L plan cottage with Queen Anne influence, built ca. 1900-05. Complex gable roof with box cornice, covered with asphalt shingles; undercut gable end has sawtooth shingles and scroll sawn brackets. Exterior wall surfaces have ship lap siding. Windows are 2/2 DHSL with some paneled bulkheads. Partial-width, shed-roofed porch supported with replacement metal posts. Entrance is obscured. (C)
- 119 823-825 West Pearl St.
One-story, four-bay, frame double shotgun with Craftsman influence, built ca. 1920. Gable roof covered with asphalt shingles. Exterior wall surfaces have radius-edge weatherboard siding. Windows are Craftsman 4/1 DHSL. Full-width, gable-roofed porch, supported by replacement metal posts. Entrance has a Craftsman four-light, three-panel door. (C)
- 120 827 West Pearl St.
One-story, four-bay, frame double shotgun with Queen Anne influence, built ca. 1905-10. Gable roof with plain projecting eaves, covered with asphalt shingles. Exterior wall surfaces have ship lap siding. Windows are Craftsman 4/1 DHSL. Full-width, incised porch, supported by turned posts. Entrance has a four-light, three-panel door. (C)

United States Department of the Interior
National Park Service

NATIONAL REGISTER OF HISTORIC PLACES
CONTINUATION SHEET

Poindexter Park Historic District

Section number 7 Page # 28 Jackson, Hinds County, Mississippi
=====

- 121 828 West Pearl St.
One-story, three-bay, frame bungalow with Craftsman influence, built ca. 1920. Hip roof with shed roof dormer, covered with asphalt shingles. Exterior wall surfaces have Masonite shingle siding. Windows are 2/2 DHSL and 4-4 metal casement replacements. Full-width, incised porch, supported by wrought iron replacement posts on brick bases. Entrance has a three-light solid replacement door. (C)

- 122 837 West Pearl St.
One-story, two-bay, frame shotgun with Craftsman influence, built ca. 1915. Gable roof covered with asphalt shingles. Exterior wall surfaces have novelty siding. Windows are Craftsman 4/1 DHSL, in pairs. Full-width, incised porch supported by chamfered posts; the porch has a frieze of bead board. Entrance has a solid replacement door. (C)

- 123 903 West Pearl St.
One-story, one-bay, brick and cast stone masonry church with Tudor Revival influence, built 1927. Cross gable roof covered with asphalt shingles. Gable end has a Tudor arched, multi-light stained glass window. Windows have flat Tudor labels and quoin surrounds, containing diaper-pattern/1 DHSL. Entrance contained in three-bay vestibule with crenelated parapet, with six-panel, double-doors topped with four-panel transom. (C)
 - a. Sunday School/Day Care, ca. 1950-55. One-story, three-bay, brick veneer masonry, flat roof behind plain parapet with cast stone coping, diaper-pattern fixed sash windows. (NC)
 - b. Congregate Care Home, ca. 1980-85. Two-story, twelve-bay, brick veneer masonry, center-loaded corridor plan, gable roof, 2/2 DH metal-frame sashes. (NC)

- 124 908 West Pearl St.
One-story, three-bay, frame bungalow with Minimalist Traditional influence, built ca. 1930. Gable roof with box cornice and flush eaves, covered with asphalt shingles. Exterior wall surfaces have vinyl siding. Windows are 6/6 DHSL, some in pairs. Partial-width, gable roofed porch, supported by wrought iron replacement posts on brick bases. Entrance has a replacement solid door. (C)

(8-84)

United States Department of the Interior
National Park Service

NATIONAL REGISTER OF HISTORIC PLACES
CONTINUATION SHEET

Poindexter Park Historic District

Section number 7 Page # 30 Jackson, Hinds County, Mississippi

130 929 West Pearl St.

One-story, three-bay, brick veneered bungalow with Craftsman influence, built ca. 1920; a carport addition built to one side ca. 1970-75. Complex hip and gable roof covered with asphalt shingles. Windows are Craftsman 4/1 DHS. Full-width, gable roofed porch supported by battered box columns. Entrance has a three-light replacement door. (C)

131 932 West Pearl St.

One-story, three-bay, frame bungalow with Craftsman influence, built ca. 1920. Complex hip and gable roof with exposed rafter tails, covered by asphalt shingles. Exterior wall surfaces have radius-edge weatherboard siding. Windows are Craftsman 3/1 DHS. Partial-width, gable roofed porch supported by wrought iron replacement posts on brick bases. Entrance has a Craftsman multi-light door. (C)

132 934 West Pearl St.

One-story, three-bay, frame composite cottage with Queen Anne and Colonial Revival influence, built ca. 1910. Complex hip and gable roof with box cornice, covered by asbestos shingles. Exterior wall surfaces have Masonite siding. Windows are obscured. Partial-width, L-plan, hip roofed porch supported by box columns on brick bases. Entrance is obscured. (C)

133 938 West Pearl St.

Two-story, three-bay, frame, modified townhouse with Craftsman influence, built ca. 1920. Gable roof with scroll sawn rafter tails and knee-brace brackets, covered with asphalt shingles. Exterior wall surfaces have Masonite siding. Windows are 4/4 DHS. Two-story, full-width incised porch supported by short battered box columns tall on brick bases; the second level of the porch enclosed ca. 1955-60. Entrance has a Craftsman nine-light, three-panel door. (C)

POINDEXTER STREET

134 121 Poindexter St.

One-story, five-bay, frame composite cottage with Queen Anne influence, built ca. 1890. Complex hip and gable roof, covered with asphalt shingles; under-cut gable end has a bargeboard and sawn brackets. Exterior wall surfaces have novelty siding. Windows are 2/2 DHS. Partial-width, L-plan, hip-roofed porch, supported by turned posts with scroll sawn brackets. Entrance is obscured. (C)

United States Department of the Interior
National Park Service

NATIONAL REGISTER OF HISTORIC PLACES
CONTINUATION SHEET

Poindexter Park Historic District

Section number 7 Page # 31 Jackson, Hinds County, Mississippi

- 135 128 Poindexter St.
One-story, two-bay, brick veneer masonry, office building with Modernist influence, built ca. 1975. Flat roof with asphalt roofing. Windows are fixed-light slit windows, in triplets. Entrance has a full-light metal frame door with transom and sidelights. (NC)
- 136 129 Poindexter St.
One-story, six-bay, frame composite cottage with Queen Anne influence, built ca. 1900-05. Complex hip roof with hip-roofed dormer, covered with asphalt shingles. Exterior wall surfaces have weatherboard siding. Windows are 2/2 DHSL. Partial-width, L-plan hip-roofed porch supported by battered box columns on brick bases, with a block spindle balustrade. Entrance has a Queen Anne single-light and cross panel door with single-light transom above. (C)
- 137 209 Poindexter St.
Two-story, fourteen-bay, brick veneer masonry L-plan apartment building with Modernist influence, built ca. 1970-75. Flat roof with asphalt roofing. Windows are 2/2 metal frame DHSL and 1-1 sliding glass doors. Two-story, full-width, incised porch supported by wrought iron posts. Entrances have solid doors. (NC)
- 138 219 Poindexter St.
One-story, five-bay, frame composite cottage with Craftsman influence, built ca. 1910-15. Complex hip and gable roof with exposed rafter tails, covered with asphalt shingles. Exterior wall surfaces have novelty siding. Windows are obscured. Partial-width, shed-roofed porch, supported by box columns. Entrance is obscured. (C)
- 139 303 Poindexter St.
One-story, four-bay, frame composite cottage with Queen Anne and Colonial Revival influence, built ca. 1900. Complex hip and gable roof with bargeboard and box cornice, covered with asphalt shingles; octagonal tower with conical roof and finial. Exterior wall surfaces have novelty siding. Windows are 1/1 DHSL. Partial-width, L-plan, hip-roofed porch, supported by columns with Doric capitals on a box bases. Entrance is obscured. (C)

United States Department of the Interior
National Park Service

NATIONAL REGISTER OF HISTORIC PLACES
CONTINUATION SHEET

Poindexter Park Historic District

Section number 7 Page # 32 Jackson, Hinds County, Mississippi

140 307 Poindexter St.

Two-story, five-bay, frame center stair quadraplex with Colonial Revival influence, built ca. 1920-25. Hip roof with boxed cornice, covered with asphalt shingles. Exterior wall surfaces have asbestos shingle siding. Windows are 2/2 and 9/6 replacement DHSL. Two-story, partial-width, gable-roofed porch supported by plain post. Entrances have one six-light, three-panel door and one solid replacement doors with single-light transoms. (C)

141 319 Poindexter St.

Two-story, three-bay, frame homestead house with Queen Anne and Colonial Revival influence, built ca. 1890. Complex hip and gable roof with box cornice, covered with asphalt shingles; under-cut closed gable end with semi-circular arched window and scroll sawn brackets. Exterior wall surfaces have Masonite shingle siding. Decorative panels and brackets applied to walls ca. 1975-80. Windows are 1/1 DHSL. Partial-width, L-plan, hip roofed porch enclosed ca. 1075-80. Entry covered with hood supported by console brackets. Entrance has a solid door with applied decoration, flanked by 1/2-length sidelights. (C)

142 325 Poindexter St.

One-story, two-bay, frame bungalow with Craftsman influence, built ca. 1930. Gable roof with box cornice, covered with asphalt shingles. Exterior wall surfaces have Masonite shingle siding. Windows are 2/2 DHSL. Partial-width, gable roofed porch supported by box columns on brick bases. Entrance door is obscured. (C)

143 331 Poindexter St.

One-and-one-half-story, four-bay, frame composite cottage with Dutch Colonial influence, built ca. 1910-15; Craftsman influence added ca. 1920-25. Complex gable, hip and gambrel roof, and added shed dormer with triple 4/4 DHSL, covered with asphalt shingles. Front gable end contains two 6/6 metal replacement sash, side gable has 4/1 DHSL. Exterior wall surfaces have novelty shingle siding. Windows are 1/1, 4/1 and 6/1 DHSL. Partial-width hip-roofed porch supported by box piers and replacement plain post. Entrance has a single-light door with a single-light transom. (C)

United States Department of the Interior
National Park Service

NATIONAL REGISTER OF HISTORIC PLACES
CONTINUATION SHEET

Poindexter Park Historic District

Section number 7 Page # 33 Jackson, Hinds County, Mississippi

=====

- 144 401 Poindexter St.
Two-story, three-bay, T-plan commercial building with Craftsman influence, built ca. 1910-15. Gable roof, covered with asphalt shingles. Exterior wall surfaces have radius-edge weatherboard siding. Windows are 1/1 DHSL. One-bay, gable roofed porch supported by simple posts. Entrance has a single-light, metal frame replacement door. (C)
- 145 407 Poindexter St.
One-and-one-half story, three-bay, frame bungalow with Craftsman influence, built ca. 1920. Side-gable roof with exposed rafter tails, covered with asphalt shingles; gable roof dormer with five Craftsman 3/3 DHSL. Exterior wall surfaces have Masonite single siding. Windows are 2/2 DHSL, some in pairs. Partial-width, gable-roofed porch supported by box columns on brick bases. Entrance has a replacement four panel door. (C)
- 146 409 Poindexter St.
One-story, three-bay, frame bungalow with Craftsman influence, built ca. 1910-15. Gable roof, covered with asphalt shingles. Exterior wall surfaces have radius-edge weatherboard siding. Windows are Craftsman 4/1 DHSL, some in pairs. Partial-width, gable-roofed porch, supported by battered piers on brick bases. Entrance has a four-light, three-panel door topped by a four-light transom. (C)
- 147 411 Poindexter St.
One-story, three-bay, frame bungalow with Craftsman influence, built ca. 1920-25. Gable roof with exposed rafter tails and kneebrace brackets, covered with asphalt shingles. Exterior wall surfaces have radius-edge weatherboard siding. Windows are Craftsman 8/1 DHSL, some in pairs. Partial-width, gable roofed porch supported by battered piers on brick bases. Entrance has an eight-light, three-panel Craftsman door, with transom above. (C)
- 148 415 Poindexter St.
One-story, three-bay, frame side-L plan cottage with Colonial Revival influence, built ca. 1900. Complex gable roof covered with asphalt shingles. Exterior wall surfaces have asbestos shingle siding. Windows are 2/2 DH replacements. Partial-width, shed roofed porch, supported by box columns. Entrance has a nine-light, two-panel door. (C)

United States Department of the Interior
National Park Service

NATIONAL REGISTER OF HISTORIC PLACES
CONTINUATION SHEET

Poindexter Park Historic District

Section number 7 Page # 34 Jackson, Hinds County, Mississippi

=====

- 149 416-418 Poindexter St.
One-story, four-bay, frame double shotgun with Craftsman influence, built ca. 1920. Gable roof covered with asphalt shingles. Exterior wall surfaces have radius-edge weatherboard siding. Windows are 4/4 DHSL. Two, one-bay, gable-roofed porches supported by plain post. Entrance has a solid replacement door. (C)
- 150 426 A & B Poindexter St.
One-story, four-bay, frame double shotgun with Craftsman influence, built ca. 1920. Gable roof covered with asphalt shingles. Exterior wall surfaces have Masonite shingle siding. Windows are obscured. Two, one-bay, gable roofed hoods, supported by knee brace brackets. Entrance is obscured. (C)
- 151 427 Poindexter St.
One-story, four-bay, frame side-L plan cottage with Queen Anne influence, built ca. 1900. Complex gable roof, covered with asphalt shingles. Exterior wall surfaces have asbestos shingle siding. Windows are 4/4 DHSL. Partial-width, shed roofed porch supported by turned posts. Entrance has a four panel door topped with a single-light transom. (C)
- 152 428-430 Poindexter St.
One-story, three-bay, frame double shotgun with Craftsman influence, built ca. 1920. Gable roof with exposed rafter tails, covered with asphalt shingles. Exterior wall surfaces have novelty siding. Windows are 4/4 DHSL. Two, one-bay, gable roofed porches supported by brick piers. Entrance has a solid door. (C)
- 153 429 Poindexter St.
One-story, four-bay, frame modified composite cottage with Colonial Revival influence, built ca. 1900. Complex hip and gable roof with box cornice and cornice returns, covered with asphalt shingles. Exterior wall surfaces have novelty siding. Windows are 4/4 DHSL. Full-width, shed roofed porch, supported by replacement wrought iron posts. Entrance has a solid door. (C)
- 154 432-434 Poindexter St.
One-story, three-bay, frame double shotgun with Craftsman influence, built ca. 1920. Gable roof with exposed rafter tails, covered with asphalt shingles. Exterior wall surfaces have novelty siding. Windows are 4/4 DHSL. Two, one-bay, gable roofed porches supported by brick piers. Entrance has a solid door. (C)

United States Department of the Interior
National Park Service

NATIONAL REGISTER OF HISTORIC PLACES
CONTINUATION SHEET

Poindexter Park Historic District

Section number 7 Page # 35 Jackson, Hinds County, Mississippi

- =====
- 155 435 Poindexter St.
One-story, two-bay, frame shotgun with Craftsman influence, built ca. 1910-15. Hip roof with exposed rafter tails, covered with asphalt shingles. Exterior wall surfaces have Masonite shingles siding. Windows are 2/2 DH replacements. Full-width, incised porch supported by box columns on brick bases. Entrance has a solid replacement door. (C)
- 156 436-438 Poindexter St.
One-story, four-bay, frame double shotgun with Craftsman influence, built ca. 1920. Gable roof, covered with asphalt shingles. Exterior wall surfaces have radius-edge weatherboard siding. Windows are 4/4 DHSL. Two, one-bay, gable roofed porches supported by brick piers. Entrance has a solid replacement door. (C)
- 157 437 Poindexter St.
One-story, two-bay, frame shotgun with Craftsman influence, built ca. 1910-15. Hip roof with exposed rafter tails, covered with asphalt shingles. Exterior wall surfaces have Masonite shingle siding. Windows are 4/4 DHSL. Full-width, incised porch supported by box columns on brick bases. Entrance has a four-panel door. (C)
- 158 438 Poindexter St., Rear
One-story, four-bay, frame double shotgun with Craftsman influence, built ca. 1920. Gable roof covered with asphalt shingles. Exterior wall surfaces have novelty siding. Windows are 4/4 DHSL. Full-width, shed-roofed porch supported by plain posts, partially enclosed. Entrance has a five-panel door. (C)
- 159 439 Poindexter St.
One-story, four-bay, frame double shotgun with Craftsman influence, built ca. 1910-15. Gable roof covered with asphalt shingles. Exterior wall surfaces have novelty siding. Windows are 6/6 DHSL. Partial-width, gable-roofed porch, supported by battered box piers on raised brick bases. Entrance has a solid replacement door. (C)

United States Department of the Interior
National Park Service

NATIONAL REGISTER OF HISTORIC PLACES
CONTINUATION SHEET

Poindexter Park Historic District

Section number 7 Page # 36 Jackson, Hinds County, Mississippi

- 160 440-442 Poindexter St.
One-story, four-bay, frame double shotgun with Craftsman influence, built ca. 1920. Gable roof covered with asphalt shingles. Exterior wall surfaces have radius-edge weatherboard siding. Windows are 4/4 DHSL and replacement windows are 6/6 metal-frame DHSL. Two, one-bay, gable roofed porches, supported by plain posts. Entrance has a solid replacement door. (C)
- 161 444 Poindexter St.
One-story, two-bay, frame shotgun with Craftsman influence, built ca. 1920. Gable roof covered with asphalt shingles. Exterior wall surfaces have novelty siding. Windows are 4/4 DHSL. Full-width, gable-roofed porch, supported by built-up posts. Entrance has a solid replacement door. (C)
- 162 445 Poindexter St.
One-story, two-bay, frame modified shotgun with Craftsman influence, built ca. 1910-15. Hip roof covered with asphalt shingles. Exterior wall surfaces have ship lap siding. Windows are 4/1 Craftsman DHSL. Full-width, incised porch supported by plain post. Entrance has a five-panel door. (C)
- 163 446 Poindexter St.
One-story, four-bay, frame double shotgun with Craftsman influence, built ca. 1920. Gable roof covered with asphalt shingles. Exterior wall surfaces have radius-edge weatherboard siding. Windows are 4/4 DHSL. Two, one-bay, gable roofed porches supported by brick piers. Entrance has a solid replacement door. (C)
- 164 508-510 Poindexter St.
One-story, four-bay, frame double shotgun with Craftsman influence, built ca. 1920-25. Gable roof covered with asphalt shingles. Exterior wall surfaces have weatherboard siding. Windows are Craftsman 4/1 DHSL. Full-width, incised porch with bead board frieze, supported by chamfered posts on brick bases. Entrance has a six-panel replacement door. (C)

United States Department of the Interior
National Park Service

NATIONAL REGISTER OF HISTORIC PLACES
CONTINUATION SHEET

Section number 7 Page # 37 Poindexter Park Historic District
Jackson, Hinds County, Mississippi
=====

POINDEXTER PARK

165 Poindexter Park

Poindexter Park is a seven and one-half acre urban greenspace, created in ca. 1898. The park occupies the entire block bound by West Capitol, Poindexter, Near and Lemon streets, save for two roughly 50' x 100' out parcel lots at its northernmost corner. The park is largely composed of grassy open space, with minimal landscaping and physical improvements. A concrete sidewalk encircles the street exposures of the park; an interior sidewalk roughly bisects the park running from northwest to southeast, leading to the pavilion (#173a) at its focus. Trees within the park include oaks, maples and other common native varieties. (C)

165a Pavilion, Poindexter Park

One-story, one-bay, field stone and frame square pavilion with Craftsman influence, built ca. 1914-15. Low-pitched, octagonal tent-like hip roof with an open ceiling and exposed rafter tails, covered with asphalt shingles. Roof is supported by battered stone piers with a closed stone balustrade and curved step balustrade. (C)

165b Trylon, Poindexter Park

Three-sided pylon of cast concrete, built ca. 1940-45. A bronze plaque attached to the marker reads "to the Father, to the Son, to the Holy Ghost". There is evidence of another plaque, long-since lost. (C)

165c Site of Poindexter House, Poindexter Park

The site of the Poindexter House is located immediately west of the park pavilion (172a), as evidenced by brick footings still visible in the soil and as confirmed by map sources. The full extent of the site is not known and was not tested during the preparation of this nomination; however, map sources note the location of outbuildings in this general area in 1875. (C)

ROSE STREET

166 314 Rose St.

One-story, three-bay, frame composite cottage with Colonial Revival and Craftsman influence, built ca. 1900. Complex hip and gable roof with box cornice, covered with asphalt shingles; gable end is closed. Exterior wall surfaces have Masonite shingle siding. Windows are 1/1 DHSL. Partial-width, hip roofed porch supported by battered box columns on brick bases. Entrance has a single-light solid replacement door. (C)

United States Department of the Interior
National Park Service

NATIONAL REGISTER OF HISTORIC PLACES
CONTINUATION SHEET

Poindexter Park Historic District

Section number 7 Page # 38 Jackson, Hinds County, Mississippi

- 167 322 Rose St.
One-story, four-bay, frame composite cottage with Colonial Revival influence, built ca. 1900, with Craftsman influence added ca. 1920-25. Complex hip and gable roof with box cornice, covered with asphalt shingles. Exterior wall surfaces have asbestos shingle siding. Windows are 2/2 DHSL. Full-width, flat roofed porch supported by battered paneled piers on brick bases added ca. 1920-25. Entrance is obscured. (C)
- 168 325 Rose St.
One-story, three-bay, frame cubical cottage with Colonial Revival influence, built ca. 1900. Hip and gable roof with box cornice, covered with asphalt shingles; under-cut gable end has a decorative vent cover. Exterior wall surfaces have Masonite siding added ca. 1980-85 over novelty siding. Windows are 1/1 DHSL. Full-width, hip roofed porch supported by wrought iron replacement posts; engaged pilasters with Doric capitals remain attached to porch walls. Entrance is obscured. (C)
- 169 327 Rose St.
One-story, three-bay, frame cubical cottage with Colonial Revival influence, built ca. 1900. Hip roof with box cornice, covered with asphalt shingles. Exterior wall surfaces have Masonite siding. Windows are 2/2 DHSL, facade has a bay window. Full-width, hip and gable-roofed porch supported by wrought iron posts. Entrance has a solid replacement door with single-light transom. (C)
- 170 400 Rose St.
One-story, three-bay, frame bungalow built ca. 1930 and modified with Modern Traditional influence, built ca. 1975-80. Gable and side pent roofs, covered with asphalt shingles. Exterior wall surfaces have vinyl siding. Windows are 4/1 DHSL and 2/2 replacement DHSL. Partial-width, incised porch, supported by a box pier. Entrances have solid replacement doors. (NC*)
- 171 406 Rose St.
One-story, four-bay, frame bungalow with Craftsman influence, built ca. 1920-25. Gable roof with jerkinhead roof and exposed rafter tails, covered with asphalt shingles. Exterior wall surfaces have stucco veneer. Windows are Craftsman 4/1 DHSL. Partial-width, gable roofed porch with jerkinhead, supported by wrought iron replacement posts. Entrance has a single-light door. (C)

United States Department of the Interior
National Park Service

NATIONAL REGISTER OF HISTORIC PLACES
CONTINUATION SHEET

Poindexter Park Historic District

Section number 7 Page # 39 Jackson, Hinds County, Mississippi

=====

- 172 408 Rose St.
One-story, three-bay, frame cubical cottage with Craftsman influence, built ca. 1915. Hip on hip roof with exposed rafter tails, covered with asphalt shingles. Exterior wall surfaces have Masonite siding. Windows are 6/6 DHSL replacements. Entrance has a solid replacement door. (C)
- 173 409 Rose St.
One-story, five-bay, frame side-L plan cottage with Queen Anne and Colonial Revival influence, built ca. 1900. Complex gable roof, covered with asphalt shingles; gable end has an ocular vent. Exterior wall surfaces have novelty siding above a brick veneer wainscot. Windows are 3/2 DHSL replacements. Partial-width, hip-roofed porch supported by turned posts with spindle brackets. Entrance has a four-panel door with single-light transom. (C)
- 174 412 Rose St.
One-story, four-bay, frame cubical cottage with Craftsman influence, built ca. 1915-20. Hip roof with hip roof dormer vent and exposed rafter tails, covered with asphalt shingles. Exterior wall surfaces have weatherboard siding. Windows are 9/1 DHSL, and 6/6 and 2/2 DHSL replacements. Porch enclosed ca. 1960-65. Entrance has a solid replacement door. (C)
- 175 413 Rose St.
One-story, five-bay, frame side-L plan cottage with Colonial Revival influence, built ca. 1900. Hip and gable roof with box cornice and cornice returns, covered with asphalt shingles. Exterior wall surfaces have vinyl siding. Windows are 2/2 DHSL. Partial-width, shed roofed porch supported by box columns. Entrance has a half-light, three-panel door with single-light transom. (C)
- 176 428 Rose St.
One-story, three-bay, frame side-U plan cottage with Queen Anne and Colonial Revival influence, built ca. 1900. Complex gable roof, covered with asphalt shingles. Exterior wall surfaces have ship lap siding. Windows are 2/2 DHSL; the facade has a cottage window with multi-light stained glass upper sash. Full-width, hip-roofed porch with curved corners, supported by box columns with brackets; and, incised side porch supported by columns with Doric capitals. Entrance has a solid replacement door. (C)

United States Department of the Interior
National Park Service

NATIONAL REGISTER OF HISTORIC PLACES
CONTINUATION SHEET

Poindexter Park Historic District

Section number 7 Page # 40 Jackson, Hinds County, Mississippi

=====

- 177 429 Rose St.
One-story, four-bay, frame double pile cottage with Colonial Revival and Craftsman influence, built ca. 1900. Side gable roof, covered with asphalt shingles. Exterior wall surfaces have weatherboard siding. Windows are 6/6 DHSL. Full-width, incised porch, supported by box columns with a block spindle balustrade. Entrance has a half-light, three-panel door. (C)
- 178 514 Rose St.
One-story, three-bay, frame center hall plan cottage with Colonial Revival influence, built ca. 1900-05. Hip roof, covered with asphalt shingles. Exterior wall surfaces have weatherboard siding. Windows are 6/6 DHSL. Full-width, incised porch supported by box columns. Entrance has a five-panel door with multi-light transom and single-light sidelights. (C)
- 179 515 Rose St.
Two-story, three-bay, frame modified homestead house with Colonial Revival influence, built ca. 1900-05. Gable roof with box cornice, covered with asphalt shingles; gable ends are closed. Exterior wall surfaces have novelty siding. Windows are 2/2 DHSL replacements. Full-width, L-plan, hip roofed porch supported by columns with Doric capitals, partially enclosed ca. 1970-75. Entrance has a half-light door. (C)
- 180 518 Rose St.
One-story, three-bay, frame composite cottage with Craftsman influence, built ca. 1910-15. Complex gable roof, covered with asphalt shingles. Exterior wall surfaces have ship lap siding. Windows are 2/2 DHSL, in pairs. Partial-width, hip roofed porch supported by battered box piers on brick bases with a closed panel balustrade. Entrance has a solid replacement door. (C)

United States Department of the Interior
National Park Service

NATIONAL REGISTER OF HISTORIC PLACES
CONTINUATION SHEET

Section number 7 Page # 45 Poindexter Park Historic District
Jackson, Hinds County, Mississippi

=====

533 Rose St.. continued:

are Queen Anne multi-light/1 DHSL. Full-width, hip roofed porch supported by fluted columns with Doric capitals. and a block spindle balustrade. Entrance has a 3/4 light door with single-light transom. (C)

186 534 Rose St.

One-story, four-bay, frame composite duplex cottage with Queen Anne influence, built ca. 1905-10. Complex hip and gable roof with boxed cornice, covered with asphalt shingles; gable dormers have sawtooth shingles. Exterior wall surfaces have ship lap siding. Windows are 4/4 DH replacements. Full-width, incised porch, supported by plain posts. Entrance has a solid replacement replacement door. (C)

187 545 Rose St.

One-story, three-bay, brick masonry commercial building with Colonial Revival influence, built ca. 1920. Flat roof behind a crenelated parapet with cast stone coping. Attic area has recessed panels with header surround. Windows are covered; above is a multi-light transom strip. Canted corner entrance has covered double doors. (C)

188 546 Rose St.

Two-story, four-bay, brick masonry commercial building with Minimal Traditional influence, built ca. 1920-25. Flat roof behind a stepped parapet with a cast stone coping. Windows are 6/6 DH replacements. Second-story, partial-width, incised porch, supported by brick piers. Street level has a solid replacement door with single-light transom. Storefront has paired single-light display windows topped with paired transoms, flanking a single-light metal frame replacement door. (C)

189 602 Rose St.

One-story, three-bay, brick and stucco veneer commercial building with Mansard Revival influence, built ca. 1970-75. Flat and Mansard roofs, covered with asphalt shingles. Storefront has paired single-light display windows, flanking a solid replacement replacement door. (NC)

United States Department of the Interior
National Park Service

NATIONAL REGISTER OF HISTORIC PLACES
CONTINUATION SHEET

Poindexter Park Historic District

Section number 7 Page # 47 Jackson, Hinds County, Mississippi

=====

- 195 627-629 Rose St.
One-story, four-bay, frame double shotgun with Craftsman influence, built ca. 1920. Gable roof, covered with asphalt shingles. Exterior wall surfaces have radius-edge weatherboard siding. Windows are 6/6 DHSL. Two, one-bay, gable-roofed porches supported by paired box columns. Entrance has a four-light, three-panel Craftsman door. (C)
- 196 628 Rose St.
One-story, three-bay, frame bungalow with Craftsman influence, built ca. 1910-15. Complex gable roof with exposed rafter tails, covered with asphalt shingles. Exterior wall surfaces have radius-edge weatherboard siding. Windows are Craftsman 4/1 DHSL, in pairs. Partial-width, gable roofed porch supported by paired box columns on raised brick bases, with a closed brick balustrade. Entrance has a single-light replacement door. (C)
- 197 633-635 Rose St.
One-story, four-bay, frame double shotgun with Craftsman influence, built ca. 1920. Gable roof, covered with asphalt shingles. Exterior wall surfaces have radius-edge weatherboard siding. Windows are 6/6 DHSL, some in pairs. Two, one-bay, gable roofed porches supported by paired box columns. Entrance has a four-light, three-panel Craftsman door. (C)
- 198 637-639 Rose St.
One-story, four-bay, frame Cape with Minimal Traditional influence, built ca. 1940. Side gable roof with box cornice, covered with asphalt shingles. Exterior wall surfaces have Masonite siding with a brick veneer wainscot. Windows are 8/8 DHSL. Partial-width, gable roofed porch supported by plain posts. Entrance has a six-light, three-panel door. (C)
- 199 640 Rose St.
One-story, three-bay, stucco veneered bungalow with Craftsman influence, built ca. 1920-25. Gable roof with exposed rafter tails, covered with asphalt shingles. Windows are 6/6 DHSL, in pairs. Partial-width, gable roofed porch with jerkinhead, supported by box columns on paneled stucco bases. Entrance has a solid replacement door. (C)

United States Department of the Interior
National Park Service

NATIONAL REGISTER OF HISTORIC PLACES
CONTINUATION SHEET

Section number 7 Page # 48 Poindexter Park Historic District
Jackson, Hinds County, Mississippi

=====

- 200 703 Rose St.
One-story, three-bay, brick masonry gas station with Colonial Revival influence, built ca. 1915. Hip roof with box cornice, covered with asphalt shingles. Windows are 2/2 DHSL, set within segmental-arched reveals. Incised pump canopy, supported by replacement metal poles. Entrance has a half-light, three-panel door. (C)
- 201 712 Rose St.
One-story, three-bay, frame bungalow with Craftsman influence, built ca. 1915-20. Complex gable roof with exposed rafter tails, covered with asphalt shingles. Exterior wall surfaces have asbestos siding. Windows are 2/2 DH replacements. Full-width, gable roofed porch, supported by box columns on brick bases. Entrance has a six-panel replacement door. (C)
- 202 715 Rose St.
Two-story, three-bay, frame homestead house with Colonial Revival and Craftsman influence, built ca. 1915. Hip and gable roof, covered with asphalt shingles. Exterior wall surfaces have Masonite siding. Windows are 9/6 DH replacements. Full-width, shed-roofed porch, supported by box columns on brick bases. Entrance has a solid replacement door. (C)
- 203 723 Rose St.
Two-story, three-bay, frame modified homestead house with Colonial Revival influence, built ca. 1900-05. Gable roof with box cornice, covered with asphalt shingles; gable ends are closed. Exterior wall surfaces have asbestos shingle siding. Windows are 1/1 DHSL. Partial-width, L-plan, shed-roofed porch supported by columns with Doric capitals. Entrance has a single-light replacement door with a single-light transom. (C)

204 General Streetscape Characteristics

Apart from its buildings, the Poindexter Park Historic District possesses characteristics of both public and private landscapes which contribute to its integrity of setting. The public characteristics of the streetscape are defined by the "broken grid" pattern formed by the

United States Department of the Interior
National Park Service

NATIONAL REGISTER OF HISTORIC PLACES
CONTINUATION SHEET

Section number 7 Page # 49 Poindexter Park Historic District
 Jackson, Hinds County, Mississippi

=====

General Streetscape Characteristics, continued:
street matrix. This matrix is embellished with elements such as mature street trees in the public right of way, early brick sidewalks laid in herringbone and basketweave patterns, and concrete pylon street markers. The private side of the setting includes lawn terraces (both with and without retaining walls), single- and double-track driveways, and concrete front walks. Landscape elements include mature lawn trees (varieties of oak, maple, magnolia, yellow poplar, red gum and sycamore, among others), ornamental trees and bushes (crepe myrtle, flowering locust, tea olive, etc.) and foundation plantings (boxwoods, azaleas, hollies, and flowering plants, among others).

8. Statement of Significance

APPLICABLE NATIONAL REGISTER CRITERIA

AREAS OF SIGNIFICANCE

- X A Property is associated with events that have made a significant contribution to the broad patterns of our history.
- B Property is associated with the lives of persons significant in our past.
- X C Property embodies the distinctive characteristics of a type, period, or method of construction or represents the work of a master, or possesses high artistic values, or represents a significant and distinguishable entity whose components lack individual distinction.
- X D Property has yielded, or is likely to yield, information important in prehistory or history.

ARCHITECTURE
COMMUNITY PLANNING
ARCHAEOLOGY-Historic
Non-Aboriginal

PERIOD OF SIGNIFICANCE

Ca. 1840 to ca. 1900
(Poindexter Estate Site)
Ca. 1890 to ca. 1944
(Poindexter Park District)

CRITERIA CONSIDERATIONS

SIGNIFICANT DATES

Property is:

N/A

- A owned by a religious institution or used for religious purposes
- B removed from its original location.
- C a birthplace or grave
- D a cemetery
- E a reconstructed building, object, or structure
- F a commemorative property
- G less than 50 years of age or achieved significance within the past 50 years.

SIGNIFICANT PERSON

N/A

CULTURAL AFFILIATION

Anglo-American

ARCHITECT/BUILDER

Various. unknown

United States Department of the Interior
National Park Service

NATIONAL REGISTER OF HISTORIC PLACES
CONTINUATION SHEET

Section number 8 Page # 50 Poindexter Park Historic District
Jackson, Hinds County, Mississippi

=====

NARRATIVE STATEMENT OF SIGNIFICANCE

The Poindexter Park Historic District is being nominated under three National Register criteria for its significance in areas of vernacular architecture, community planning and development, and archaeology.

Under criterion A in the area of community planning and development, the district possesses significance for Poindexter Park, the first city park developed after the original plan of alternating blocks and commons laid out in Jackson in 1822. The park was laid out in ca. 1902 on the grounds of the core of the former Poindexter "homestead" site, following the gift of the land to the City of Jackson from Mrs. Ellen Poindexter Moore. The development of the park was but one result of the late-nineteenth century progressive movement in Jackson, which also realized the annexation of Poindexter Park and West Jackson and the expansion of the city's school system to support the significant population growth of the period. Poindexter Park initiated the development of a park system for Jackson (followed by Livingston Park in 1916), and thus reflects the influence of the City Beautiful Movement in Jackson at the turn of the century.

Under criterion C in the area of vernacular architecture, the district possesses significance for its wide ranging collection of vernacular house types developed for families with economic means ranging from the working-class to the upper-middle class. The eastern streets of the district and those facing Poindexter Park feature vernacular building types familiar to the urban context, many of which possess some "high-style" elements of the Queen Anne, Colonial Revival and Craftsman influences. In contrast, though, are the more simple working class cottages found on the western side of the district, which appear as types more accustomed to rural settings that are afforded only modest detailing, if any at all. The great range of types to be found here stand in sharp contrast with the adjacent working class neighborhoods of West Jackson, which contain street upon street of shotguns and double shotguns with few variations. The variety of vernacular types represented in Poindexter Park provide the sense of a context by which the development of other low- and middle-class neighborhoods may be analyzed and compared. While there has been losses of some small groups of structures within the context of the entire neighborhood, and while alterations of some structures have resulted in the loss of architectural detail, the integrity of vernacular forms and types retains significance as a group.

Under criterion D in the area of archaeology (historic: non-aboriginal), the district possesses significance as the site of the Poindexter Estate complex on the grounds of Poindexter Park, known as "Oakwood". The origins of the large Greek Revival home that stood on this site are in dispute among local historians, who variously ascribe the construction of the house for former governor George Poindexter or his immediate family in ca.

United States Department of the Interior
National Park Service

NATIONAL REGISTER OF HISTORIC PLACES
CONTINUATION SHEET

Poindexter Park Historic District

Section number 8 Page # 51 Jackson, Hinds County, Mississippi

1840-45, or, for state Supreme Court Justice W. L. Sharkey in the same period. The deed record is contradictory, which might indicate that the Sharkey and Poindexter families became related by marriage at this time. In spite of the conflicting information, the large dwelling and its various outbuildings revealed on a plat of the subdivision of the neighborhood in 1875 suggest the development of a large "suburban" estate complex, which was far more extensive than that shown in 1875. The site does offer the high potential for significant information to be contained in undisturbed subsurface features that remain on the site.

The Poindexter Park area began its development in the ca. 1840s, apparently as a result of the establishment of at least three large "suburban estates" -- one, the estate of William L. Sharkey, state Supreme Court Justice in the 1840s and 1850s; a second by Caswell R. Clifton, a major figure in the Whig Party who was an important figure in the state Whig and Democratic Convention of 1849; and the Poindexter family, which may or may not have included former governor George Poindexter (Daniel 1875; Hinds County Deed Book 9:434). The estates were developed on the high ground near the end of Capitol and Sharkey (now West Pearl) streets, straddling the city limits. The Clifton estate was located inside of the city limit roughly between the present-day alignment of Clifton and Minerva streets; the Sharkey estate was concentrated to the south of Sharkey Street; and the Poindexter estate occupied the rest of the general area extended from the city limit west to Rose Street, running from Sharkey Street to Robinson Road. The homes of these estates would have been visible from the core of Jackson, and particularly from State Street and the Old Capitol, since they occupied the next high ground at the horizon in the western vista of antebellum Jackson.

It is unfortunate that local research efforts have not provided a conclusive answer to the questions of ownership of the Poindexter estate property. Resolving these questions was beyond the scope of this project. Some sources cite that the property was owned by W. L. Sharkey from 1841 to 1864; there are also reports that the property was purchased by Mary Anne Poindexter in 1841 and held by the family continuously afterward (Coppensbarger 1950). There has been little research done on the children of George Poindexter, and thus, the relationship of Mary Anne Poindexter to the rest of the family is unclear. George Poindexter's second wife, Annie, died in 1834 and he did not remarry before his death in September of 1855 (Claiborne 1880:414). On the other hand, the deed records of the county do show that Poindexter's sons, Thomas and John J. (named for Poindexter's brothers) did own the property at one time (Hinds County Deed Book 29:761). Mary Anne, then, may have been George Poindexter's daughter, or the wife of one of his sons. However, since George Poindexter spent more than the last decade of his life living in Jackson, and since there are no other records which place his residence, the suggestion is made that he lived out his life in the company of his family on the West Jackson estate.

United States Department of the Interior
National Park Service

NATIONAL REGISTER OF HISTORIC PLACES
CONTINUATION SHEET

Poindexter Park Historic District

Section number 8 Page # 53 Jackson, Hinds County, Mississippi

Development of Poindexter Park by the City of Jackson began soon after acquiring clear title. There are only a few descriptions and early photographs of Poindexter Park as it was first developed. The scant information that is available documents that the Poindexter House was moved from the park site to a site on Robinson near its intersection with Rose Street in ca. 1900-02. The remaining buildings on the site were apparently demolished, and the park minimally developed as a passive park space. Playground equipment was added in 1912-13 (Jackson Commission Record July, 1913:15) The existing gazebo (the second on the site) was built in the ca. 1930s.

It does not appear that much additional grading or construction of "hard" improvements took place over the next forty years, given that the drives, footings and garden features of the old Poindexter House were still visible on site as late as 1950 (Coppenger 1950). Some of the existing trees in the park appear to remain from the original estate grounds, notably, the double-line of trees that lead due east from the gazebo to the intersection of Lemon and West Capitol streets.

The establishment of a street trolley line along West Pearl Street at the turn of the century provided a further enticement for the development of working-class and middle-class housing in the Poindexter Park. The first Sanborn fire insurance map of the area, issued in 1904, reveals that the eastern side of the district was largely built-out with middle- and upper-middle class housing. It is likely that the western portion of the neighborhood was largely developed by this time, though it was not mapped by the Sanborn Company until 1909.

The district's variety of working-class and middle-class vernacular architecture is quite remarkable, especially since the majority of it was apparently developed for rental purposes. Unlike many of the neighborhoods of Jackson which contain working-class housing, Poindexter Park is noticeably free of large groups of repeated or "pattern" housing for the working class, unlike all of the neighborhoods in the West Jackson area to its west and south. The suggestion is made by this evidence that the working class houses of the district were developed for dozens of different property owners, as opposed to mass development by one property owner as is strongly suggested in surrounding neighborhoods.

The neighborhood also possesses the unusual character of having numerous examples of the same building type developed for occupation by families of two different economic classes. By example, there are larger side L-plan types built for the middle and upper-middle class families of Minerva, Adams and Poindexter streets, as well as more modest side L-plan cottages built in the working class areas of the southern part of Poindexter Street and on Hunt Street. With the exception of the homestead, four-square and modified townhouse plans on the upper end of the economic class scale, and

United States Department of the Interior
National Park Service

NATIONAL REGISTER OF HISTORIC PLACES
CONTINUATION SHEET

Poindexter Park Historic District

Section number 8 Page # 54 Jackson, Hinds County, Mississippi

=====
the shotgun, double-shotgun and modified shotgun on the lower end of the same scale, the vernacular architecture of the district possesses little other sense of exclusivity by class.

Given the diversity of vernacular house types in the district, particularly in the areas of working class housing, the question of motivation for the development of this housing becomes significant. Since the demand for middle- and upper-middle class housing was sufficient in West Jackson to have filled the eastern parts of the district prior to ca. 1904, as evidenced in Sanborn maps, why then was relatively valuable developable land in the immediately adjacent blocks given over for the development of rental housing for the working class? Unfortunately, the documentary record and the parameters of this project were too limited to provide the answer to this question, which does not appear to be clearly related to the racial origin of the working class occupants of the district.

A review of the earliest available city directories from 1904, 1910, 1916, 1922 and 1940 reveal consistent patterns of neighborhood occupancy at the beginning of the century which remained fairly unchanged until World War Two. Adams and Minerva streets were clearly the residences of middle- and upper-middle class Anglo-Americans, as were the portions of Poindexter, Lemon and Deer Park streets which faced Poindexter Park. Occupations of the heads of households at these addresses included doctors, lawyers, traveling salesmen, retail store owners, express company agents, and even upper-level partners in substantial Jackson businesses. In the areas of the district to the south and west of these enclaves lived working-class families, who were employed as domestics, porters, clerks, tradesmen. The modest residences facing Pearl, Hunt, Central and the western portion of Deer Park Street housed mixed populations of Anglo- and African-Americans, more or less living side-by-side. The southern part of Poindexter Street and the whole of Melba Street were largely populated by African-Americans (Southern Directory Co. 1904, 1910; Miller 1916; Tucker 1922; Jackson Directory Co. 1940).

Conflicting historical demographic characteristics of this district challenge some long-held perceptions of urban neighborhoods, especially in the segregated cities of the South. The conditions which are normally expected to separate groups of people and neighborhoods-- conditions of economic class, race, and home ownership versus rental housing-- all appear very blurred in Poindexter Park, but are very clearly defined in other places of similar age in Jackson.

It does appear that additional study is needed to resolve these perplexing conditions, which may provide the means for understanding the urban dynamics of other neighborhoods in Jackson with greater clarity-- if not many other neighborhoods throughout the South. Certainly, additional historical research is warranted as a factor in resolving these

United States Department of the Interior
National Park Service

NATIONAL REGISTER OF HISTORIC PLACES
CONTINUATION SHEET

Poindexter Park Historic District

Section number 8 Page # 55 Jackson, Hinds County, Mississippi

=====
uncertainties and quirks. However, in the case of Poindexter Park, the potential exists for the development of a late-nineteenth and early twentieth century model for interpreting urban cultures and subcultures, which may occur in a context of time that spans a full century. The development of these models must also include investigation of the urban archaeological record in an attempt to refine the larger, and particularly and more subtle issues which mark the qualities of this place. Given this, the entire neighborhood of Poindexter Park is appropriate to define the parameters for the archaeological study of this unusual urban model.

The archaeological context posed by this district raises questions that may be answered by further historical and archaeological investigation:

Poindexter Estate Complex

- * What was the original purpose and extent of the estate complex-- was this simply a landed estate, or a larger, active plantation? What was the original organizational pattern of antebellum outbuildings, quarters, gardens, orchards and other features, in relationship with the original residence? How do the locations of these features relate to the current landscape pattern of the immediate estate site? If there was agricultural activity associated with the property, has the location of adjacent fields, laneways, and orchards affected the pattern of organization in evidence in the street grid of the district today?
- * What was the pattern of organization of labor on this estate? If slaves were kept on the property, is there a relationship of slave quarters and the division of labor within the system? If there is evidence of extended farming activity, is there evidence of separate areas for housing provided to domestic servants as opposed to field hands? If so, is there a pattern of hierarchy or privilege among the slave population? Do artifacts underscore this pattern?
- * What is the level of self-reliance of this place? How did that level change through time, especially in comparison of antebellum and post-bellum patterns? What trade patterns are indicated by ceramics and other cultural artifacts not produced on this place? What patterns of consumption and income-level is reflected by these artifacts? How does this pattern differ from families of the same income-level who lived closer to major commercial routes (e.g.: Mississippi River). What does this comparison tell us about the early development of Jackson as a city?
- * How did the pattern of labor organization change following Emancipation? How did this change affect the physical organization of the estate? Did this change affect the level of self-reliance on the estate? What

United States Department of the Interior
National Park Service

NATIONAL REGISTER OF HISTORIC PLACES
CONTINUATION SHEET

Section number 8 Page # 56 Poindexter Park Historic District
Jackson, Hinds County, Mississippi

=====

different patterns of trade are reflected by the construction of railroad transportation arteries through Jackson in the late 1870s and 1880s?

There also appears to be the potential for archaeological resources of significance throughout the neighborhood which may provide important information on the lifeways of urban working class people (both African-American and Anglo-American) at the turn of the twentieth century. Of particular interest in the case of Poindexter Park is that the area appears to reflect the "break in the grid" phenomenon, which is reflected not only in its plan but in its socio-economic and ethnic character as revealed by city directory sources (Clay 1973; Weaver 1985; Weaver 1988; and, Weaver and Hopkins 1991). In this case, the "break in the grid" that occurs in the north-south blocks containing Poindexter Park and the Echols Junior High School serves as an area of transitional boundary between middle-class Anglo-Americans and predominately working-class African-Americans, though the boundary was by no means exclusive or impermeable. In this case, the neighborhood level appears to be the most appropriate scale of comparative analysis of significant information to be gained from consumer patterns and their ties to local, regional and national market networks.

There appears to be the potential for the development of an area of significance under an archaeological context that is worthy of further exploration. Unfortunately, the development of this context was beyond the scope of this project. None-the-less, great insight into several historical questions may be answered if research is explored. These include:

- * The transformation of the Poindexter Estate to a suburban neighborhood appears to have occurred in a relatively short span of time. Are there examples or sites of housing development remaining from its transitional period? How did the occupational activity change on these sites as properties evolved from non-urban to suburban, then urban use?
- * Whether Anglo- or African-American, working-class residents of the neighborhood would have had access to the same means of public transportation, local retail outlets and etc. Given this, what are the differences and similarities in patterns of consumption and of diet in evidence? How do these patterns compare with other known studies of urban models? What patterns exist linking these individuals and groups to local, regional and national marketing networks?
- * Does the complex relationship of economic class and races within this small urban context constitute an "epitome district", as posed by

United States Department of the Interior
National Park Service

NATIONAL REGISTER OF HISTORIC PLACES
CONTINUATION SHEET

Section number 9 Page # 58 Poindexter Park Historic District
Jackson, Hinds County, Mississippi

=====

MAJOR BIBLIOGRAPHICAL SOURCES

- Brinson, Carroll.
1977 Jackson, A Special Kind of Place. City of Jackson. Jackson.
MS
- Claiborne, J.F.H.
1880 Mississippi as a Province, Territory and State. Reprint
Company, Spartanburg, S.C.
- Clay, Grady.
1973 Close-up: How to Read the American City. Praeger Publishers,
New York.
- Coppenbarger, H.L.
1950 "Poindexter Place", Jackson Daily News. November 26, 1950.
- Daniel, Henry C.
1875 Official Map of the City of Jackson. Office of the Hinds County
Chancery Clerk.
- Hinds County, Office of the Chancery Clerk.
Deed Books 9:434; 24:603; 29:761.
- Jackson, City of.
Jackson Commission Government Record. Vol. 1, No. 1 (April 1,
1913); Vol. 1, No. 2 (July 1, 1913); Vol. 2, No. 2 (April 1,
1914). City of Jackson, Jackson, MS.
- Jackson Directory Co.
1940 City Directory of Jackson, East Jackson and Pearl City,
Mississippi. Jackson Directory Co., Jackson, MS.
- Miller, E.H. comp.
1916 Jackson, Mississippi City Directory. Vol. V. Gulf States
Directory Publishing Company, Asheville, N.C.
- Rowland, Dunbar.
1907 Encyclopedia of Mississippi History. Volumes I and II. Selwyn
A. Brant, Madison, Wisconsin.
- Sanborn Fire Insurance Map Co.
Sanborn Maps of Jackson: 1904, 1909, 1914, 1918, 1925, 1946,
1962.
- Southern Directory Co.
1910 Jackson, Miss. City Directory 1910. Southern Directory Co.,
Jackson, MS(?).

United States Department of the Interior
National Park Service

NATIONAL REGISTER OF HISTORIC PLACES
CONTINUATION SHEET

Section number 9 Page # 59 Poindexter Park Historic District
Jackson, Hinds County, Mississippi
=====

Tucker Printing House.
1922 Jackson City Directory for 1922. Tucker Printing House,
Jackson, MS.

Weaver, Guy G.
1985 That Crooked Little Street: Boundary Maintenance on Beale
Street, Memphis, Tennessee. MS on file, Garrow and
Associates, Inc.. Atlanta, GA.

Weaver, Guy G.
1988 Archaeological Testing at the Site of the Peabody Place Mall
and Office Complex, Memphis, Tennessee: Phase II
Construction. Garrow and Associates, Inc. Atlanta. GA.

Weaver Guy G. and John Linn Hopkins.
1991 Archaeological Data Recovery at the Rum Boogie Site
(40SY494), Peabody Place Mall and Office Complex, Memphis,
TN. Garrow and Associates, Inc., Memphis. TN.

=====

9. MAJOR BIBLIOGRAPHICAL REFERENCES

=====

X See continuation sheet.

PREVIOUS DOCUMENTATION ON FILE (NPS):

- preliminary determination of individual listing (36 CFR 67) has been requested.
- previously listed in the National Register
- previously determined eligible by the National Register
- designated a National Historic Landmark
- recorded by Historic American Buildings Survey # _____
- recorded by Historic American Engineering Record # _____

PRIMARY LOCATION OF ADDITIONAL DATA:

- State historic preservation office Local government
- Other state agency University
- Federal agency Other

-- Specify Repository: **Mississippi Department of Archives and History**

=====

10. Geographical Data

=====

Acreage of Property: Approximately fifty acres

UTM References: Zone Easting Northing Zone Easting Northing

A	15	763460	3577410	B	15	764190	3577420
C	15	764200	3576860	D	15	763480	3576820

___ See continuation sheet.

Verbal Boundary Description: See continuation sheet.

Boundary Justification: See continuation sheet.

=====

11. Form Prepared By

=====

Name/Title: John Linn Hopkins

Organization: Hopkins & Associates

Date: June 23, 1994

Street & Number: 974 Philadelphia Street

Telephone: (901) 278-5186

City or Town: Memphis

State: TN

ZIP: 38104

=====

PROPERTY OWNER

=====

Name Multiple

Street & Number N/A

Telephone N/A

City/Town N/A

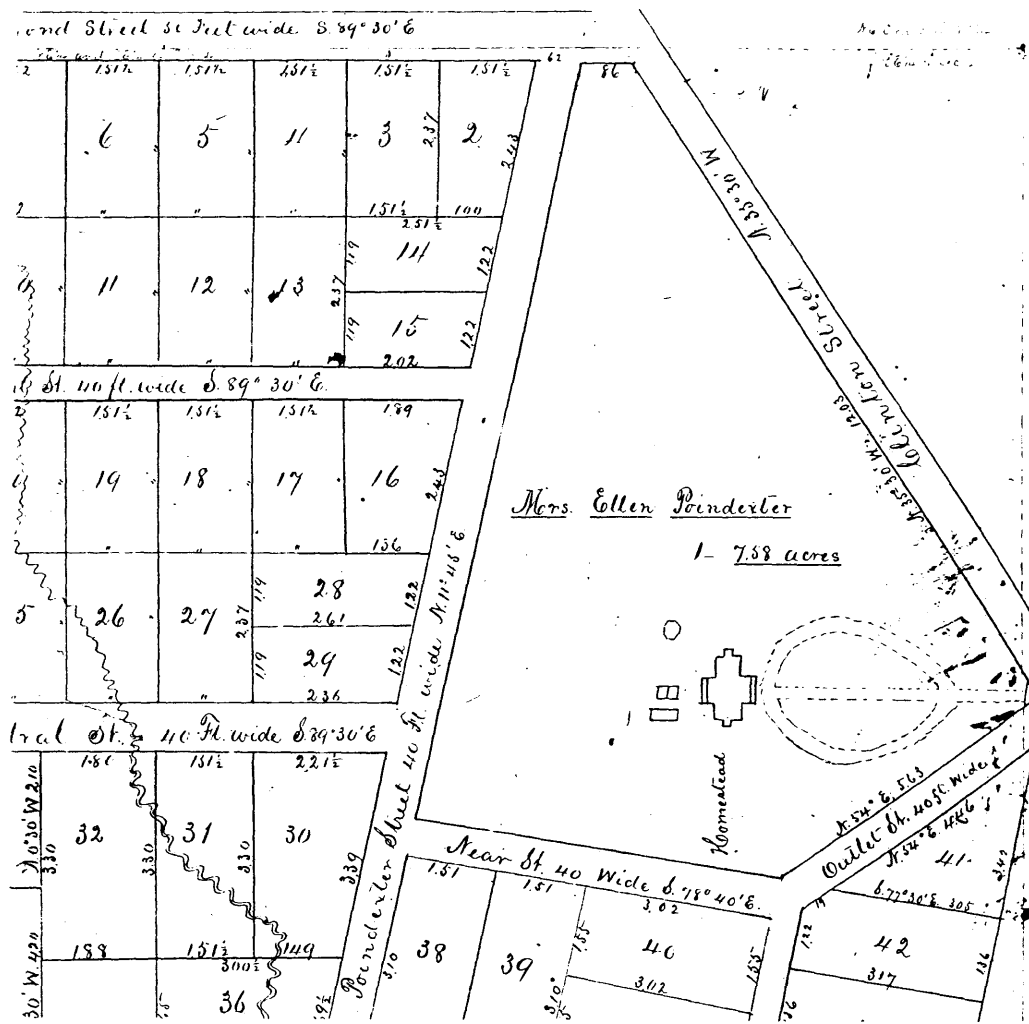
State N/A

Zip Code N/A

United States Department of the Interior
National Park Service

NATIONAL REGISTER OF HISTORIC PLACES
CONTINUATION SHEET

Section number _____ Page # 61 Poindexter Park Historic District
Jackson, Hinds County, Mississippi



Portion of the Poindexter Survey of 1875, showing the street plan and subdivision pattern established (or formalized) at that time, including a sketch of the grounds of the Poindexter Estate Complex on the current site of Poindexter Park (Hinds County Deed Book 9:434).

United States Department of the Interior
National Park Service

NATIONAL REGISTER OF HISTORIC PLACES
CONTINUATION SHEET

Poindexter Park Historic District

Section number Photos Page # 62 Jackson, Hinds County, Mississippi

=====

HISTORIC PHOTOGRAPHS

Poindexter Historic District
Jackson, Hinds County, MS
Photographer: Unknown
Date: Ca. 1950s
Original: Mississippi Department of
Archives and History



Historic View 1 of 2:

View of the Poindexter House following its removal in ca. 1902 to Robinson Street from its original location on the site of Poindexter Park. The house was demolished in the ca. 1950s. Copied from the architectural survey files of the Mississippi Department of Archives and History, Jackson, MS.

(8-84)

United States Department of the Interior
National Park Service

NATIONAL REGISTER OF HISTORIC PLACES
CONTINUATION SHEET

Section number Photos Page # 63 Poindexter Park Historic District
Jackson, Hinds County, Mississippi

=====



Historic View 2 of 2:

Another view of the Poindexter House following its relocation to Robinson Street in ca. 1902. The enclosure of the side porch likely occurred following the removal of the house to this location, as confirmed by the Sanborn map series of 1925. The house was demolished in the ca. 1950s. Copied from the survey files of the Mississippi Department of Archives and History.

United States Department of the Interior
National Park Service

NATIONAL REGISTER OF HISTORIC PLACES
CONTINUATION SHEET

Section number Photos Page # 64 Poindexter Park Historic District
Jackson, Hinds County, Mississippi
=====

PHOTOLOG

Poindexter Park Historic District
Jackson, Hinds County, Mississippi
Photographer: John Linn Hopkins
Negs: Mississippi Department of
Archives and History
Date: June, 1994

Photo 1 of 22

View of the ca. 1913-14 pavilion in Poindexter Park, looking generally west from Lemon Street. The pavilion stands in the approximate original location of the Poindexter House, as suggested by the alignment of landscape elements and by visible archaeological features, which include footings.

Photo 2 of 22

View across Poindexter Park toward the residences facing the park on Poindexter Street, looking generally west.

Photo 3 of 22

View of Echols Junior High School, 101 Near Street, looking generally southeast.

Photo 4 of 22

View of the 300 block of Poindexter Street, looking southwest from 307 Poindexter, at right.

Photo 5 of 22

View of the 900 block of Hunt Street, looking northwest from 928 Hunt Street, at right.

Photo 6 of 22

View of the 900 block of Hunt Street, looking northeast from 956 Hunt Street, at left.

Photo 7 of 22

View of 413 Rose Street, looking generally northwest.

Photo 8 of 22

View of 428 Rose Street, looking generally northeast.

Photo 9 of 22

View of the west side of Rose Street, looking generally southwest across its intersection with Pearl Street, from 703 Rose Street.

**United States Department of the Interior
National Park Service**

**NATIONAL REGISTER OF HISTORIC PLACES
CONTINUATION SHEET**

Poindexter Park Historic District

Section number Photos Page # 65 Jackson, Hinds County, Mississippi

Photo 10 of 22

View of St. Mark's Episcopal Church, 903 Pearl Street, looking generally southwest.

Photo 11 of 22

View of the west side of Poindexter Street, looking southwest from 407 Poindexter Street, at right.

Photo 12 of 22

View of the Capitol Street Methodist Church sanctuary, looking generally southeast.

Photo 13 of 22

View of the 600 block of West Capitol Street, looking generally southwest from 601 West Capitol Street, at left.

Photo 14 of 22

View of the 100 block of Adams Street, looking generally northwest from 157 Adams, at left.

Photo 15 of 22

View of the 500 block of Pearl Street, looking southeast from 533 Pearl Street, at right.

Photo 16 of 22

View of the 100 block of Minerva Street, looking northeast from 161 Minerva, at left.

Photo 17 of 22

View of 719-721 Pearl Street.

Photo 18 of 22

View of the 800 block of Pearl Street, looking southeast from 827 Pearl Street, at right.

Photo 19 of 22

View of the 400 block of Poindexter Street, looking generally northwest from 439 Poindexter Street, at left.

Photo 20 of 22

View of the 400 block of Poindexter Street, looking generally northwest from 411 Poindexter, at left.

Photo 21 of 22

View of the 700 block of Deer Park Street, looking generally southwest from 721 Deer Park Street, at right.

United States Department of the Interior
National Park Service

NATIONAL REGISTER OF HISTORIC PLACES
CONTINUATION SHEET

Section number Photos Page # 66 Poindexter Park Historic District
Jackson, Hinds County, Mississippi
=====

Photo 22 of 22

View of the 700 block of Deer Park Street, looking generally
southwest from 735 Deer Park, at left.