

United States Department of the Interior  
National Park Service

National Register of Historic Places  
Registration Form



This form is for use in nominating or requesting determinations for individual properties and districts. See instructions in *How to Complete the National Register of Historic Places Registration Form* (National Register Bulletin 16A). Complete each item by marking "x" in the appropriate box or by entering the information requested. If an item does not apply to the property being documented, enter "N/A" for "not applicable." For functions, architectural classification, materials, and areas of significance, enter only categories and subcategories from the instructions. Place additional entries and narrative items on continuation sheets (NPS Form 10-900a). Use a typewriter, word processor, or computer, to complete all items.

1. Name of Property

historic name Old Corinth Cemetery

other names/site number N/A

2. Location

street & number AR Highway 26

☐ not for publication

city or town Center Point Vicinity

☐ vicinity

state AR code AR county Howard code 061 zip code 72064

3. State/Federal Agency Certification

As the designated authority under the National Historic Preservation Act, as amended, I hereby certify that this ☒ nomination ☐ request for determination of eligibility meets the documentation standards for registering properties in the National Register of Historic Places and meets the procedural and professional requirements set for in 36 CFR Part 60. In my opinion, the property ☒ meets ☐ does not meet the National Register criteria. I recommend that this property be considered significant

☐ nationally ☐ statewide ☒ locally. (See continuation sheet for additional comments.)

Casper Matthews  
Signature of certifying official/Title

4/13/12  
Date

\_\_\_\_\_  
State or Federal agency and bureau

In my opinion, the property ☐ meets ☐ does not meet the National Register criteria. (☐ See Continuation sheet for additional comments.)

\_\_\_\_\_  
Signature of certifying official/Title

\_\_\_\_\_  
Date

\_\_\_\_\_  
State or Federal agency and bureau

4. National Park Service Certification

I hereby certify that the property is:

☒ entered in the National Register.

☐ See continuation sheet

☐ determined eligible for the National Register.

☐ See continuation sheet

☐ determined not eligible for the National Register.

☐ removed from the National Register.

☐ other, (explain:) \_\_\_\_\_

for  
Signature of the Keeper

Date of Action

5/11/2012

Old Corinth Cemetery  
Name of Property

Howard County, AR  
County and State

## 5. Classification

**Ownership of Property**  
(Check as many boxes as apply)

- ☐ private  
☒ public-local  
☐ public-State  
☐ public-Federal

**Category of Property**  
(Check only one box)

- ☐ building(s)  
☐ district  
☒ site  
☐ structure  
☐ object

**Number of Resources within Property**  
(Do not include previously listed resources in count.)

Contributing Noncontributing

	buildings
1	sites
	structures
	objects
1	Total

**Name of related multiple property listing**  
(Enter "N/A" if property is not part of a multiple property listing.)

**Number of Contributing resources previously listed  
in the National Register**

## 6. Function or Use

**Historic Functions**  
(Enter categories from instructions)

FUNERARY/cemetery

**Current Functions**  
(Enter categories from instructions)

FUNERARY/cemetery

## 7. Description

**Architectural Classification**  
(Enter categories from instructions)

N/A

**Materials**  
(Enter categories from instructions)

foundation N/A  
walls N/A  
  
roof N/A  
other Concrete, marble, granite, fieldstone.

**Narrative Description**  
(Describe the historic and current condition of the property on one or more continuation sheets.)

United States Department of the Interior  
National Park Service

National Register of Historic Places Continuation Sheet

Name of Property  
Old Corinth Cemetery

County and State  
Howard County, AR

Name of Multiple Property Listing (If applicable)

Section number: 7 page: 1

SUMMARY

The Old Corinth Cemetery is located 5 miles north of Nashville, Arkansas on Arkansas Highway 26. Earliest graves date from the 1850s and the last burial took place in 2000. The Old Corinth Cemetery is the only extant resource of the community of Corinth in Howard County. The cemetery is one of three in the community. The first, known as Pioneer Cemetery since at least 1977 is located at the site of the Corinth Church of Christ. By the 1930s it was recorded that there was no sign of the burial ground but by 2009 it was noted in *Corinth Revisited by Its Kinfolks* (1977) that unmarked fieldstones remained to mark interments. The New Corinth Cemetery was established circa 1953 to the south of Old Corinth Cemetery on Corinth Road.<sup>1</sup>

The Old Corinth Cemetery has 257 marked burials, 89 unmarked burials including approximately 35 fieldstones and markers with no inscriptions or illegible and missing information. The community of Corinth was located in the area of the cemetery but by the 1950s the Highland Peach Orchard had encompassed the site and all commercial and residential structures were destroyed for the crop. The Old Corinth Cemetery is the only remainder of Corinth and contains the burials of the earliest families who settled there in the early 19<sup>th</sup> century.

ELABORATION

The Old Corinth Cemetery is located in the former community of Corinth on Arkansas State Highway 26. The highway follows the route of the military road built by the federal government to facilitate Indian removal to Oklahoma. The cemetery is surrounded by extensive tracts of farmland and few residences. It is open to the highway on the south and is enclosed on the east, west and north by a barbed wire fence. There is no sign marking the name of the cemetery. The largest collection of burials

<sup>1</sup> Lucille Westbrook, *Corinth Revisited by Its Kinfolks*, (1977), (Self-published, 1977), 78.

United States Department of the Interior  
National Park Service

National Register of Historic Places Continuation Sheet

Name of Property  
Old Corinth Cemetery

County and State  
Howard County, AR

Name of Multiple Property Listing (If applicable)

Section number: 7 page: 2

date from the post-Victorian eras with interments tapering off by 1940. While there are modern burials, the last interment was in 2000 and only 22 occurred in the previous 40 years.

***Burials by Decade***

1850-1859	4
1860-1869	6
1870-1879	9
1880-1889	27
1890-1899	39
1900-1919	60
1920-1929	30
1930-1939	30
1940-1949	17
1950-1959	12
1960-1969	9
1970-1979	7
1980-1989	3
1990-1999	3
2000	1
<b>Total</b>	<b>257</b>

***Unmarked Burials***

There are approximately 89 unmarked burials, which include commercial markers with illegible or missing death dates and approximately 35 fieldstones.



**United States Department of the Interior  
National Park Service**

**National Register of Historic Places Continuation Sheet**

Name of Property  
Old Corinth Cemetery

County and State  
Howard County, AR

Name of Multiple Property Listing (If applicable)

Section number: 7 page: 3

***Landscape***

The environment of the Old Corinth Cemetery is flat with no large trees among the burials. There are azaleas, and one large cedar tree. Irises are found in various plots and around individual tombstones.

***Grave Markers and Plots***

Many commercially produced tablet-style monuments of marble or limestone are found in the cemetery as well as several homemade examples constructed of concrete. The burials are arranged in north-south rows and there are several family plots. The coping on these plots primarily consist of concrete. The Roberson plot is surrounded by an Art Moderne-inspired coping of concrete posts, rounded metal rails and a concrete stile gate. There are three family plots of stacked rock and one unmarked stacked rock cairn.

Tombstone forms are short obelisk, cross-obelisk, tablet-style with graduated, round, square and gothic shoulders, scroll, pulpit, block and ground-level. Burials after the 1900s include granite and concrete composition. There are also three angle-iron examples with names but no dates welded onto the surface. The grave of J.D. Ellis (b. October 20, 1920, d. February 21, 1935), is composed of a short bulky concrete post with a piece of paper documenting the interred's information inset under glass.

Several burials exhibit the symbol of the gates of Heaven opening and are topped with open Bibles. Many markers are inscribed with hands pointing to Heaven or clasping. Animal symbols include doves as a symbol of peace and lambs to denote the innocence of children. Foliage symbols found are ferns for humility, frankness and sincerity, evening primrose for eternal love or sadness, and lilies representing innocence, purity and virginity. The most elaborate burial in the cemetery is that of Richard T. Copeland (b. February 22, 1814, d. November 13, 1890). Copeland's tombstone is a gothic tablet-style

**United States Department of the Interior  
National Park Service**

**National Register of Historic Places Continuation Sheet**

Name of Property  
Old Corinth Cemetery

County and State  
Howard County, AR

Name of Multiple Property Listing (If applicable)

Section number: 7 page: 4

topped with a tripartite finial. An abundant spray of foliage including lilies of the valley, evening primrose and roses adorns the apex of the marker.

Vernacular examples of concrete take the form of tablet-style with rounded, square or slanted shoulders and ground-level. The inscriptions are executed with stamps or a stylus and iconography is confined to a primitive dove. One unmarked vernacular monument consists of a small ground level concrete slab inset with colored marbles. A large square rubbed concrete base can be found in the cemetery with evidence of a missing slab on the top. No maker's marks are evident.

**INTEGRITY**

Among the graves in the Old Corinth Cemetery can be found those of the earliest settlers of the community of Corinth and their descendants. The cemetery has been maintained well with appropriate repairs being performed when needed.

**8. Statement of Significance****Applicable National Register Criteria**

(Mark "x" in one or more boxes for the criteria qualifying the property for National Register listing.)

- ☒ **A** Property is associated with events that have made a significant contribution to the broad patterns of our history.
- ☐ **B** Property is associated with the lives of persons significant in our past.
- ☐ **C** Property embodies the distinctive characteristics of a type, period, or method of construction or represents the work of a master, or possesses high artistic values, or represents a significant and distinguishable entity whose components lack individual distinction.
- ☐ **D** Property has yielded, or is likely to yield, information important in prehistory or history.

**Criteria Considerations**

(Mark "x" in all the boxes that apply.)

Property is:

- ☐ **A** owned by a religious institution or used for religious purposes.
- ☐ **B** removed from its original location.
- ☐ **C** birthplace or grave of a historical figure
- ☒ **D** a cemetery.
- ☐ **E** a reconstructed building, object, or structure.
- ☐ **F** a commemorative property
- ☐ **G** less than 50 years of age or achieved significance within the past 50 years.

**Levels of Significance** (local, state, national)

Local

**Areas of Significance** (Enter categories from instructions)

EXPLORATION/SETTLEMENT

**Period of Significance**

1851-1940

**Significant Dates**

N/A

**Significant Person** (Complete if Criterion B is marked)**Cultural Affiliation** (Complete if Criterion D is marked)

Undefined

**Architect/Builder**

N/A

**Narrative Statement of Significance**

(Explain the significance of the property on one or more continuation sheets.)

**9. Major Bibliographical References****Bibliography**

(Cite the books, articles, and other sources used in preparing this form on one or more continuation sheets.)

**Previous documentation on file (NPS):**

- ☐ preliminary determination of individual listing (36 CFR 67) has been requested
- ☐ previously listed in the National Register
- ☐ Previously determined eligible by the National Register
- ☐ designated a National Historic Landmark
- ☐ recorded by Historic American Buildings Survey # \_\_\_\_\_
- ☐ recorded by Historic American Engineering

**Primary location of additional data:**

- ☒ State Historic Preservation Office
- ☐ Other State Agency
- ☐ Federal Agency
- ☐ Local Government
- ☐ University
- ☐ Other

Name of repository:

United States Department of the Interior  
National Park Service

**National Register of Historic Places Continuation Sheet**

Name of Property  
Old Corinth Cemetery

County and State  
Howard County, AR

Name of Multiple Property Listing (If applicable)

Section number: 8 page: 1

**SUMMARY**

The Old Corinth Cemetery contains the burials of early families who settled the community of Corinth, originally known as Wilton, in the mid-19<sup>th</sup> century. Physical traces of the homes and businesses of those families are no longer extant and the cemetery is the only resource that provides information on their place in the establishment of the community and the county.

The cemetery exhibits many examples of popular mourning iconography and funerary architecture of the 19<sup>th</sup>, 20<sup>th</sup> and 21<sup>st</sup> centuries. It also contains many heartfelt handmade vernacular markers of the type that rural farm families of limited means would erect.

The Old Corinth Cemetery is being nominated to the National Register under Criterion A, Criteria Consideration D, with local significance as the only remnant of the community of Corinth. There are eight historic burials dating from the 19<sup>th</sup> century that have been marked with 20<sup>th</sup> century monuments. An inventory of the cemetery from 1977 makes note of the fact that three burials with monuments were formerly designated by unmarked fieldstones. Despite this, the moderately high-style forms and individualized vernacular forms as well as the mourning symbolism are important cultural indicators of the community of Corinth. The architecture in the cemetery relates the story of the community members and the settlement of Corinth.<sup>2</sup>

Corinth was primarily a farming area populated by offshoots of early settlers who branched out to larger nearby towns of Center Point and Nashville to run small businesses or take up farming. There were stores in the area, a school, a Church of Christ was established there as well as a small religious instruction school for a brief period.

<sup>2</sup> Westbrook, 77.

United States Department of the Interior  
National Park Service

National Register of Historic Places Continuation Sheet

Name of Property  
Old Corinth Cemetery

County and State  
Howard County, AR

Name of Multiple Property Listing (If applicable)

Section number: 8 page: 2

ELABORATION

Howard County, containing the unincorporated community of Corinth, was formed from Hempstead, Sevier, Polk and Pike counties in 1873. The county seat was established in that year at Center Point, west of Corinth. By 1905 the seat was moved to Nashville. A spring had been discovered in the area of Corinth, then known as Wilton, which made it conducive to settlement.

There had been previous settlement in the eastern portion of modern Howard County when the Jones and Reese families from Tennessee moved there in 1845. David Dickens Jones took up residence in an existing log house with adjacent cleared land and constructed the first blacksmith shop in the community. Jones and Reese found the area to be good for establishing pastures, and raising fruits with reliable sources of water so they persuaded family members and friends to join them. By 1850 there were 40 families who hailed from 11 states in the east and south regions of the county.

A post office was established by 1849 under the name of Wilton. The community retained that name until 1885 when the post office was moved from its original location on the farm of the Stewart family and renamed Corinth. The source of that name came from the local Church of Christ. The first meeting of the congregation was held in 1850 under a tree on the land of Campbell Hedrick and the name of Corinth Church of Christ was chosen. Tyler Bacon loaned his home for meetings until the group moved to an arbor on the site of the Pioneer Cemetery. The arbor was replaced in 1885 with a frame church.

The children in the community received their education in a log building in the area of the Pioneer Cemetery through a Mr. Tolleson in 1862. The school was moved later to Wood Reese's property. The last site of the public school in Corinth, which closed in 1939, was on the grounds of the New Corinth Cemetery.<sup>3</sup>

<sup>3</sup> Westbrook, 182, Introduction, p. 2.



United States Department of the Interior  
National Park Service

National Register of Historic Places Continuation Sheet

Name of Property  
Old Corinth Cemetery

County and State  
Howard County, AR

Name of Multiple Property Listing (If applicable)

Section number: 8 page: 3

Corinth was also home to a Christian college called Nazareth University. It was established in the community by Colin McKinney Wilmeth and his nephew Alexander Campbell Wilmeth who moved there from Dallas, Texas. The Wilmeths had come to Corinth in 1888 to oversee a summer meeting in conjunction with the church. They returned the next year and the Church of Christ members asked him to institute a "church school" for religious instruction along the lines of his school in Dallas. Four departments were offered at the school – Biblical, Classical, Industrial and Musical. The Nazareth Publication Society also published a weekly newspaper called *The Watchman*. The school brought an influx of residents and students resulting in a recorded enrollment of 200. This was beneficial to Corinth until the depression of 1893 destroyed the strides the school had taken. The Wilmeths were not able to recover and the university was abandoned in 1897 for a missionary society in Tampico, Mexico.<sup>4</sup>

Farmers in Corinth took their goods to market in Camden and Little Rock via the Military Road, now Arkansas Highway 26 through Corinth. The business area of Corinth included a flour mill, gin, sawmill and a drug store, two blacksmiths and a feed store. Dr. A.J. Ball looked after patients in the area. The situation of Corinth on a major transportation route within close proximity to the county seat at Nashville and other extensive towns like Camden, DeQueen and Murfreesboro contributed to its character as a rural residential stop on the Military Road. It was relatively easy to get to these areas with political and economic establishments, so other than local small businesses and services Corinth did not

<sup>4</sup> *Ibid*, Introduction, p. 2; "Brief Sketch of the Life of D.S. Ligon," online article found at <http://www.therestorationmovement.com/ligon.htm>, accessed October 30, 2011; Westbrook, 123, 206; Howard County Heritage Club, *The History of Howard County, Arkansas*, (Nashville News: Nashville, AR 1973), 21; James Jackson, "Peach Industry," *The Encyclopedia of Arkansas History and Culture*, online article at <http://encyclopediaofarkansas.net/encyclopedia/entry-detail.aspx?entryID=2099>, accessed October 30, 2011; Virginia Buxton, "Genealogy of Michael Womack: The Pioneer Arkansan Who Named Nashville, Arkansas," online article found at [www.womack.net.com/features/michaelwomack.html](http://www.womack.net.com/features/michaelwomack.html), accessed November 29, 2011.



United States Department of the Interior  
National Park Service

National Register of Historic Places Continuation Sheet

Name of Property  
Old Corinth Cemetery

County and State  
Howard County, AR

Name of Multiple Property Listing (If applicable)

Section number: 8 page: 4

experience a significant amount of growth and remained a farming community. The post office at Corinth had closed in 1912, which usually signals a decline in population.

The land around Corinth had been planted in extensive peach orchards by the early 20<sup>th</sup> century. Nashville was a major shipper of peaches because of railroad spurs that allowed shipment to market and the construction of icehouses and storage facilities. The Depression brought an end to the prominence of the peach industry in Howard County. The orchard was divided into small tracts and the crop continued to be raised in the area through the 1940s and early 1950s. A late freeze for two years in a row beginning in 1952 destroyed two-thirds of the crop, lowering production. Brokers moved their business to California, Florida and southern Texas so Howard County farmers pulled up the trees and converted their land to other uses.

The loss of such a major industry was a factor in the relocation of Corinth families looking for work. Shifts in the population can be discerned from the numbers of burials in the cemetery during the years of the Depression and World War II. In the 1950s cotton production declined in Southwest and West Arkansas, which would have detrimentally affected a farming community like Corinth. These events were major reasons for changes in the makeup of many areas across the nation. Even though the distribution of the population in Corinth and Howard County changed, families who descended from the original settlers remain in the area.<sup>5</sup>

---

<sup>5</sup> Russell Baker, *From Memdag to Norsk: A Historical Directory of Arkansas Post Offices, 1832-1971*, (Arkansas Genealogical Society: Hot Springs, AR, 1988), 51; Information from Russell Baker, Mabelvale, AR, November 1, 2011.

United States Department of the Interior  
National Park Service

National Register of Historic Places Continuation Sheet

Name of Property  
Old Corinth Cemetery

County and State  
Howard County, AR

Name of Multiple Property Listing (If applicable)

Section number: 8 page: 5

STATEMENT OF SIGNIFICANCE

The core settlers of Corinth stem from the Jones and Reese families, who moved to Pike County, Arkansas in 1845. Davie D. Jones and Jordan Reese left Tennessee and settled near a spring in the area. By 1847 other family members joined them; including Rebecca Norman Jones (b. Feb. 2, 1781, d. Dec. 19, 1859), and her children. Other Tennesseans who were related or acquainted with Jones and Reese traveled to Corinth including the Bacons, Copelands, Hales, Murrays, McClures, Dixons, McFarlands, Campbells, Snoddys, Shofners, Womacks, Chesshirs and Lokeys – all of whom are represented by interments in Old Corinth Cemetery.

Soon after arriving in Arkansas, William Tyler Bacon (b. September 23, 1815, d. June 25, 1871), began hosting church meetings on his property. Prior to moving to Arkansas, Bacon, Davie Jones and Anthony Floyd (b. Aug. 10, 1816, d. Oct. 13, 1871), had joined the Campbell reformation. Hoping to share the teachings of the movement in their new home, the men enlisted Elijah Kelley of Delight to preach, organized the Corinth Church of Christ in 1850, and served as the first elders. The Church of Christ was the center of life in Corinth. Farming was the financial sustenance while the church provided social and spiritual sustenance for the community.

The Church of Christ was formed at Lexington, Kentucky, in 1832 when members of Christian Churches and the Disciples of Christ acknowledged both movements and agreed to come together to preach the restoration of New Testament Christianity. The tenet of the Church of Christ held that congregations of the church are self-governing. The elders oversaw the functioning of the church and confession of faith and immersion in baptism was required for membership. This controversial movement depleted many Baptist churches of members and caused several schisms. Corinth did not

United States Department of the Interior  
National Park Service

National Register of Historic Places Continuation Sheet

Name of Property  
Old Corinth Cemetery

County and State  
Howard County, AR

Name of Multiple Property Listing (If applicable)

Section number: 8 page: 6

experience these problems and the Church of Christ became integral to the community.<sup>6</sup>

The congregation used Tyler Bacon's home for approximately two years until they built a frame building south of the Old Corinth Cemetery. The Civil War interrupted growth until 1875 when members built a tabernacle behind the original church for large summer meetings. At the end of the 19<sup>th</sup> century there was a substantial membership, estimated at several hundred. The conservative character of the Church of Christ seemed to work well for the farming community of Corinth. J.A. Copeland, a Church of Christ preacher from Corinth, stressed the need for "country preachers" in a 1932 article. Copeland noted that there were ten congregations in Howard County but there was no steady preacher at the time. He advocated that preachers for small rural churches should take up residence on farms and produce extra income in between addressing local congregations and taking their message to widespread areas. This would be more efficient and meaningful to the preachers and the congregation rather than holding out for full-time work at more pay in larger urban churches.

The location of Nazareth University in Corinth was a result of the support of the Church of Christ. The relationship between the founder and the local congregation was boosted by the belief in independent comprehension of the Bible, which enabled the school to be a success, albeit short-lived. Nazareth University was one of the earliest institutions in Arkansas with a Christian education curriculum.<sup>7</sup>

<sup>6</sup> Paul D. Haynie, "Churches of Christ," *The Encyclopedia of Arkansas History & Culture*, online article found at <http://encyclopediaofarkansas.net/encyclopedia/entry-detail.aspx?entry>, Accessed 03/21/2012; Lawrence H. Roberts, "Trials and Triumphs in the Life of J.A. Copeland," online article at <http://www.therestorationmovement.com/trialsandtriumphs.htm>, Accessed 03/21/2012; Fred Savage, Jr., "A History of the Campbellite Influence of Arkansas Baptists," Self-published, 1977.

<sup>7</sup> Roberts.

**United States Department of the Interior  
National Park Service**

**National Register of Historic Places Continuation Sheet**

Name of Property  
Old Corinth Cemetery

County and State  
Howard County, AR

Name of Multiple Property Listing (If applicable)

Section number: 8 page: 7

Today, no physical remnants of the church, university, or any other early buildings of Corinth remain and the land around the Old Corinth Cemetery is utilized for farming and harvesting of timber. The historic period of settlement is represented by burials dating from the 1850s. The concentration of burials through the decades up to 2000 document the fluctuations in population and their correspondence with national and local events like the establishment of the Church of Christ and its educational offshoot, Nazareth University. Local agricultural trends contributed to movement of settlers as well as the impact of the depressions of 1893 and 1929.

Old Corinth Cemetery is the only remnant of the community of Corinth, but the names within relate the story of its settlement and the agricultural character of the area. The physical integrity of the cemetery is excellent and it has a good local collection of vernacular and moderately high-style funerary architecture. Although the Old Corinth Cemetery was used for modern burials up to 2000, the bulk of the burials predate 1961. The cemetery is being nominated to the National Register under Criterion A, Criteria Consideration D, with local significance.

United States Department of the Interior  
National Park Service

National Register of Historic Places Continuation Sheet

Name of Property  
Old Corinth Cemetery

County and State  
Howard County, AR

Name of Multiple Property Listing (If applicable)

Section number: 9 page: 1

BIBLIOGRAPHY

Baker, Russell. *From Memdag to Norsk: A Historical Directory of Arkansas Post Offices, 1832-1971*.  
Arkansas Genealogical Society: Hot Springs, AR. 1988.

"Brief Sketch of the Life of D.S. Ligon." Online article found at  
<http://www.therestorationmovement.com/ligon.htm>. Accessed October 30, 2011.

Haynie, Paul. "Churches of Christ." *The Encyclopedia of Arkansas History and Culture*. Online article  
found at <http://encyclopediaofarkansas.net/encyclopedia/entry-detail.aspx?entryID+3176>. Accessed  
03/21/2012.

Howard County Heritage Club. *The History of Howard County, Arkansas*. Nashville News: Nashville, AR  
1973.

Jackson, James. "Peach Industry." *The Encyclopedia of Arkansas History and Culture*. Online article found  
at <http://encyclopediaofarkansas.net/encyclopedia/entry-detail.aspx?entryID=2099>. Accessed  
October 30, 2011.

Roberts, "Lawrence H. Trials and Triumphs in the Life of J.A. Copeland". Online article found at  
<http://www.therestorationmovement.com/trialsandtriumphs.htm>, Accessed 03/21/2012.

Savage, Fred, Jr. *A History of the Campbellite Influence of Arkansas Baptists*. Self-published. 1977.

Westbrook, Lucille. *Corinth Revisited by Its Kinfolks* (1977). Self Published, 1977.



Old Corinth Cemetery  
Name of Property

Howard County, AR  
County and State

## 10. Geographical Data

Acreage of Property 0.17 acres

### UTM References

(Place additional UTM references on a continuation sheet.)

1 15 422456 3767390  
Zone Easting Northing  
2

3  
Zone Easting Northing  
4

☐ See continuation sheet

### Verbal Boundary Description

Beginning at a point on the south side of AR Highway 26 proceed east 324.06 feet; thence proceed north 211.31 feet; thence proceed west 174.27 feet; thence proceed south 365.59 feet back to point of beginning.

### Boundary Justification

(Explain why the boundaries were selected on a continuation sheet.)

This boundary includes all of the property historically associated with this resource that retains its integrity.

## 11. Form Prepared By

name/title Holly Hope/ Special Projects Historian  
organization Arkansas Historic Preservation Program date 04/05/2012  
street & number 1500 Tower Building, 323 Center Street telephone 501 324-9880  
city or town Little Rock state AR zip code 72201

### Additional Documentation

Submit the following items with the completed form:

### Continuation Sheets

### Maps

A USGS map (7.5 or 15 minute series) indicating the property's location

A Sketch map for historic districts and properties having large acreage or numerous resources.

### Photographs

Representative black and white photographs of the property.

### Additional items

(Check with the SHPO or FPO for any additional items.)

### Property Owner

(Complete this item at the request of SHPO or FPO.)

name Corinth Cemetery Association  
street & number 143 Cassady Lane telephone  
city or town Nashville state AR zip code 71852

**Paperwork Reduction Act Statement:** This information is being collected for applications to the National Register of Historic Places to nominate properties for listing or determine eligibility for listing, to list properties, and to amend existing listing. Response to this request is required to obtain a benefit in accordance with the National Historic Preservation Act, as amended (16 U.S.C. 470 *et seq.*)

**Estimated Burden Statement:** Public reporting burden for this form is estimated to average 18.1 hours per response including time for reviewing instructions, gathering and maintaining data, and completing and reviewing the form. Direct comments regarding this burden estimate or any aspect of this form to the Chief, Administrative Services Division, National Park Service, P. O. Box 37127, Washington, DC 20013-7127; and the Office of Management and Budget, Paperwork Reductions Projects (1024-0018), Washington, DC 20303.



UNITED STATES DEPARTMENT OF THE INTERIOR  
NATIONAL PARK SERVICE

NATIONAL REGISTER OF HISTORIC PLACES  
EVALUATION/RETURN SHEET

REQUESTED ACTION: NOMINATION

PROPERTY Old Corinth Cemetery  
NAME:

MULTIPLE  
NAME:

STATE & COUNTY: ARKANSAS, Howard

DATE RECEIVED: 1/06/12 DATE OF PENDING LIST: 1/30/12  
DATE OF 16TH DAY: 2/14/12 DATE OF 45TH DAY: 2/21/12  
DATE OF WEEKLY LIST:

REFERENCE NUMBER: 12000022

REASONS FOR REVIEW:

APPEAL: N DATA PROBLEM: N LANDSCAPE: N LESS THAN 50 YEARS: N  
OTHER: N PDIL: N PERIOD: N PROGRAM UNAPPROVED: N  
REQUEST: Y SAMPLE: N SLR DRAFT: N NATIONAL: N

COMMENT WAIVER: N

\_\_\_ACCEPT \_\_\_RETURN 2/14/2012 DATE  
\_\_\_REJECT

ABSTRACT/SUMMARY COMMENTS:

*See attached comments*

RECOM./CRITERIA Return

REVIEWER [Signature]

DISCIPLINE \_\_\_\_\_

TELEPHONE \_\_\_\_\_

DATE [Signature]

DOCUMENTATION see attached comments Y/N see attached SLR Y/N

If a nomination is returned to the nominating authority, the nomination is no longer under consideration by the NPS.



IN REPLY REFER TO:

# United States Department of the Interior

NATIONAL PARK SERVICE

1849 C Street, N.W.

Washington, D.C. 20240

## The United States Department of the Interior National Park Service

### National Register of Historic Places Evaluation/Return Sheet

Property Name: Old Corinth Cemetery

Reference Number: 12000022

#### Reason for Return

The Old Corinth Cemetery nomination is being returned for additional information. We believe that the property is eligible, but that the documentation is insufficient to demonstrate its importance in Exploration/Settlement under Criterion A .

The community of Corinth was largely a community of like-minded families with a common background. The centerpiece of this community appears to have been the Campbellite Church of Christ, and it is evident that the glue that held the community together was the church and its meetings. Commercial enterprises that might have been in the area were likely loosely strung along the old military road, and the eventual location of a private academy (whose size and success are likely exaggerated) eventually did create something of a dispersed hamlet with non-Campbellite residents.

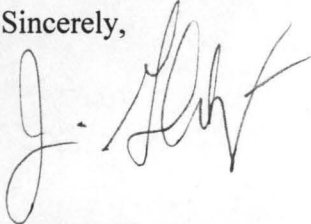
I think that the nomination could be made stronger by additional emphasis on the period of settlement of the Campbellites from Tennessee and the influence of their Church of Christ as an anchor to the community (and the location of the cemetery). It appears that this congregation was one of the two largest concentrations of their (relatively new) denomination in the state, and was an important concentration of this non-hierarchical sect. I think that this is a much more important line of investigation than the commercial/educational aspect - a story that was played over in countless rural hamlets across the state and not necessarily an important story. The integrity issues are not as worrisome in this cemetery as they would be in one whose importance lies in the design of the site or markers. From the photographs, it appears that many of the markers are

relatively old, and that any modern intrusions are of such a scale that they do not detract from the overall fell of the cemetery.

When referring to the congregation, please capitalize "Church of Christ." This is the name of the denomination.

We appreciate the opportunity to review this nomination and hope that you find these comments useful. Please feel free to contact me if you have any questions. I can be reached at (202) 354-2275 or email at <[James\\_Gabbert@nps.gov](mailto:James_Gabbert@nps.gov)>.

Sincerely,

A handwritten signature in black ink, appearing to read "J. Gabbert", with a stylized flourish at the end.

Jim Gabbert, Historian  
National Register of Historic Places  
2/16/2012



The Department of  
**Arkansas**  
**Heritage**

Mike Beebe  
Governor

Cathie Matthews  
Director

Arkansas Arts Council

\*

Arkansas Natural Heritage  
Commission

\*

Delta Cultural Center

\*

Historic Arkansas Museum

\*

Mosaic Templars  
Cultural Center

\*

Old State House Museum



Arkansas Historic  
Preservation Program

1500 Tower Building  
323 Center Street

Little Rock, AR 72201

(501) 324-9880

fax: (501) 324-9184

tdd: (501) 324-9811

e-mail:

[info@arkansaspreservation.org](mailto:info@arkansaspreservation.org)

website:

[www.arkansaspreservation.com](http://www.arkansaspreservation.com)

RECEIVED 2280

JAN - 6 2012

NAT. REGISTER OF HISTORIC PLACES  
NATIONAL PARK SERVICE

January 2, 2012

Ms. Carol Shull  
Chief of Registration  
United States Department of the Interior  
National Register of Historic Places  
National Park Service  
8th Floor  
1201 Eye Street, NW  
Washington, DC 20005

RE: Old Corinth Cemetery, Corinth – Howard County, AR

Dear Carol:

We are enclosing for your review the above-referenced nomination. **We are requesting a substantive review of this nomination.** The Arkansas Historic Preservation Program has complied with all applicable nominating procedures and notification requirements in the nomination process.

If you need further information, please call Ralph S. Wilcox of my staff at (501) 324-9787. Thank you for your cooperation in this matter.

Sincerely,

Cathie Matthews  
State Historic Preservation Officer

CM:rsw

Enclosure



UNITED STATES DEPARTMENT OF THE INTERIOR  
NATIONAL PARK SERVICE

NATIONAL REGISTER OF HISTORIC PLACES  
EVALUATION/RETURN SHEET

REQUESTED ACTION: RESUBMISSION

PROPERTY Old Corinth Cemetery  
NAME:

MULTIPLE  
NAME:

STATE & COUNTY: ARKANSAS, Howard

DATE RECEIVED: 4/27/12 DATE OF PENDING LIST:  
DATE OF 16TH DAY: DATE OF 45TH DAY: 6/13/12  
DATE OF WEEKLY LIST:

REFERENCE NUMBER: 12000022

DETAILED EVALUATION:

☒ ACCEPT ☐ RETURN ☐ REJECT 5/11/2012 DATE

ABSTRACT/SUMMARY COMMENTS:

*Resub somewhat addresses Return comments*

*Last Remnant of a Dispersed Community that grew around  
a Campbellite Church. The Community was primarily Agricultural/  
Horticultural and various Financial panics eventually killed the  
local Economy. church, schools, & commercial bldgs disappeared, leaving  
the Cemetery as the lone survivor*

RECOM./CRITERIA Accept A

REVIEWER Ji Hubbard

DISCIPLINE \_\_\_\_\_

TELEPHONE \_\_\_\_\_

DATE \_\_\_\_\_

DOCUMENTATION see attached comments Y/N see attached SLR Y/N





The Department of  
**Arkansas  
Heritage**

Mike Beebe  
Governor

Cathie Matthews  
Director

Arkansas Arts Council

\*

Arkansas Natural Heritage  
Commission

\*

Delta Cultural Center

\*

Historic Arkansas Museum

\*

Mosaic Templars  
Cultural Center

\*

Old State House Museum



Arkansas Historic  
Preservation Program

1500 Tower Building  
323 Center Street  
Little Rock, AR 72201  
(501) 324-9880  
fax: (501) 324-9184  
tdd: (501) 324-9811

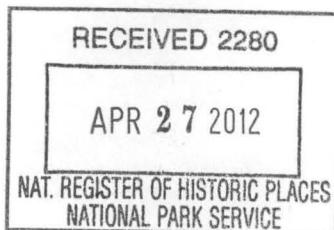
e-mail:

[info@arkansaspreservation.org](mailto:info@arkansaspreservation.org)

website:

[www.arkansaspreservation.com](http://www.arkansaspreservation.com)

An Equal Opportunity Employer



April 5, 2012

Carol Shull  
Chief of Registration  
United States Department of the Interior  
National Register of Historic Places  
National Park Service  
8<sup>th</sup> Floor  
1201 Eye Street, NW  
Washington, D.C. 20005

RE: Old Corinth Cemetery, Howard Co.

Dear Ms. Shull:

We are enclosing for your review the revisions for the above mentioned National Register nomination. The Arkansas Historic Preservation Program has complied with all applicable nominating procedures and notification requirements in the nomination process.

If you need further information, please call Holly Hope of my staff at (501) 324-9148. Thank you for your cooperation in this matter.

Sincerely,

Cathie Matthews  
State Historic Preservation Officer

CM:hh

Enclosure





Old Corinth Cemetery, Stacked Rock Cairn

Howard Co, Ar

Holly Hope

06/23/11

ON file at AHPP

View from East





Old Growth Cemetery  
Howard Co, Ar  
Holly Hope

06/23/11

ON file at AHPP

View from west





Old Corinth Cemetery, angle - IRON

Howard Co, Ga

Holly Hope

06/23/11

ON file at AHAP

View from west





Old Corinth Cemetery, Concrete tablet examples  
Howard Co, Ar  
Holly Hope

Ok/23/11  
on file at AHP  
View from west





ED. J. L. L. S.  
FROM: 10-20-1920  
TO: FEBRUARY 1921  
To: [illegible]  
And: [illegible]

Old Corinth Cemetery, Concrete + glass Marker  
Howard Co, Ar  
Holly Hope

06/23/11

on file at AHPP  
View from west







Old Corinth Cemetery, Tablet + headstones  
Howard Co, Ar  
Holly Hope

06/23/11

ON file at QHPP  
View from South



Old Corinth Cemetery, high-style examples

Howard Co, Ar

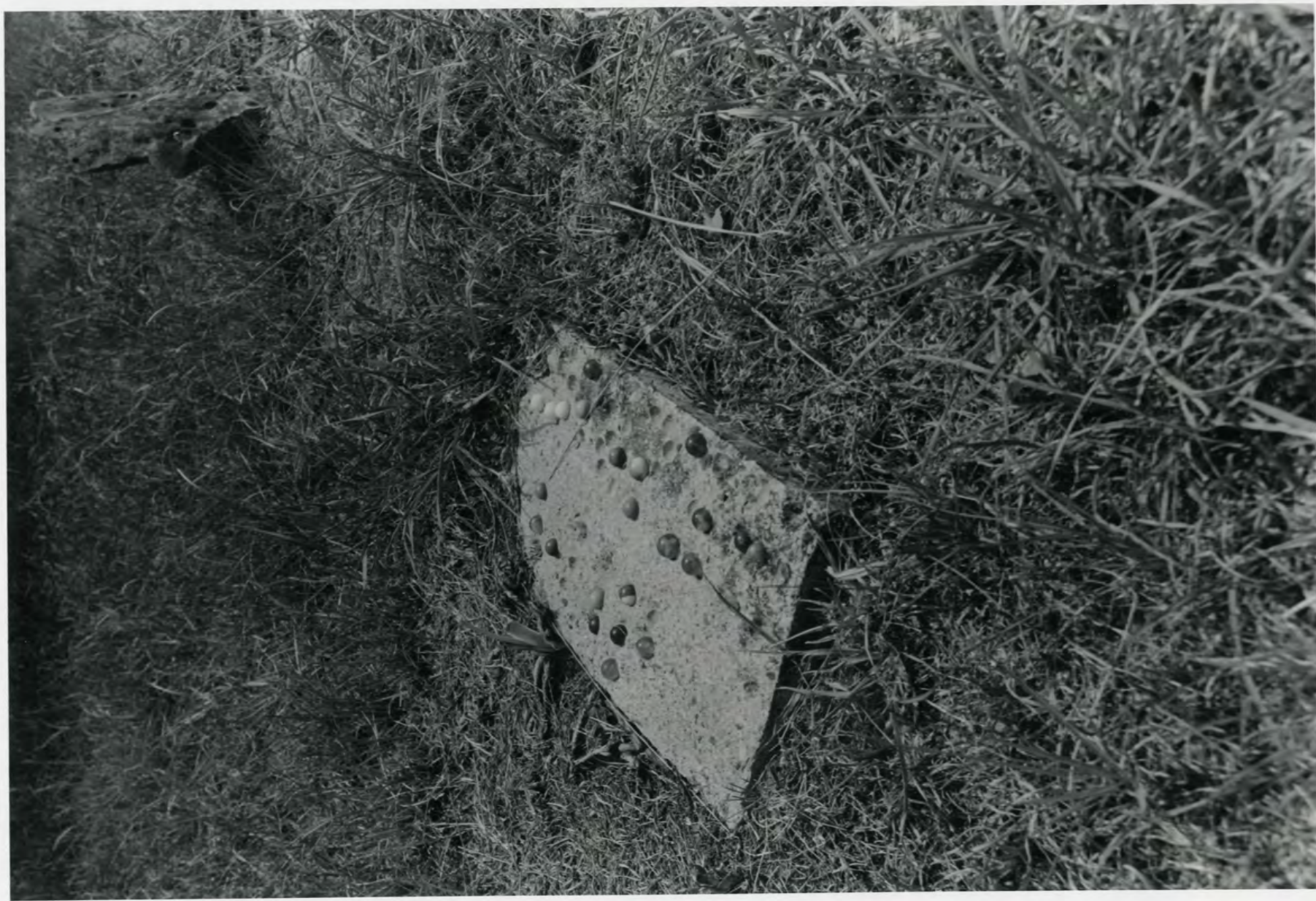
Holly Hope

06/23/11

On file at AHP

View from North





Old Corinth Cemetery, Vernacular Concrete Markers w/ Marbles

Howard Co, Ar

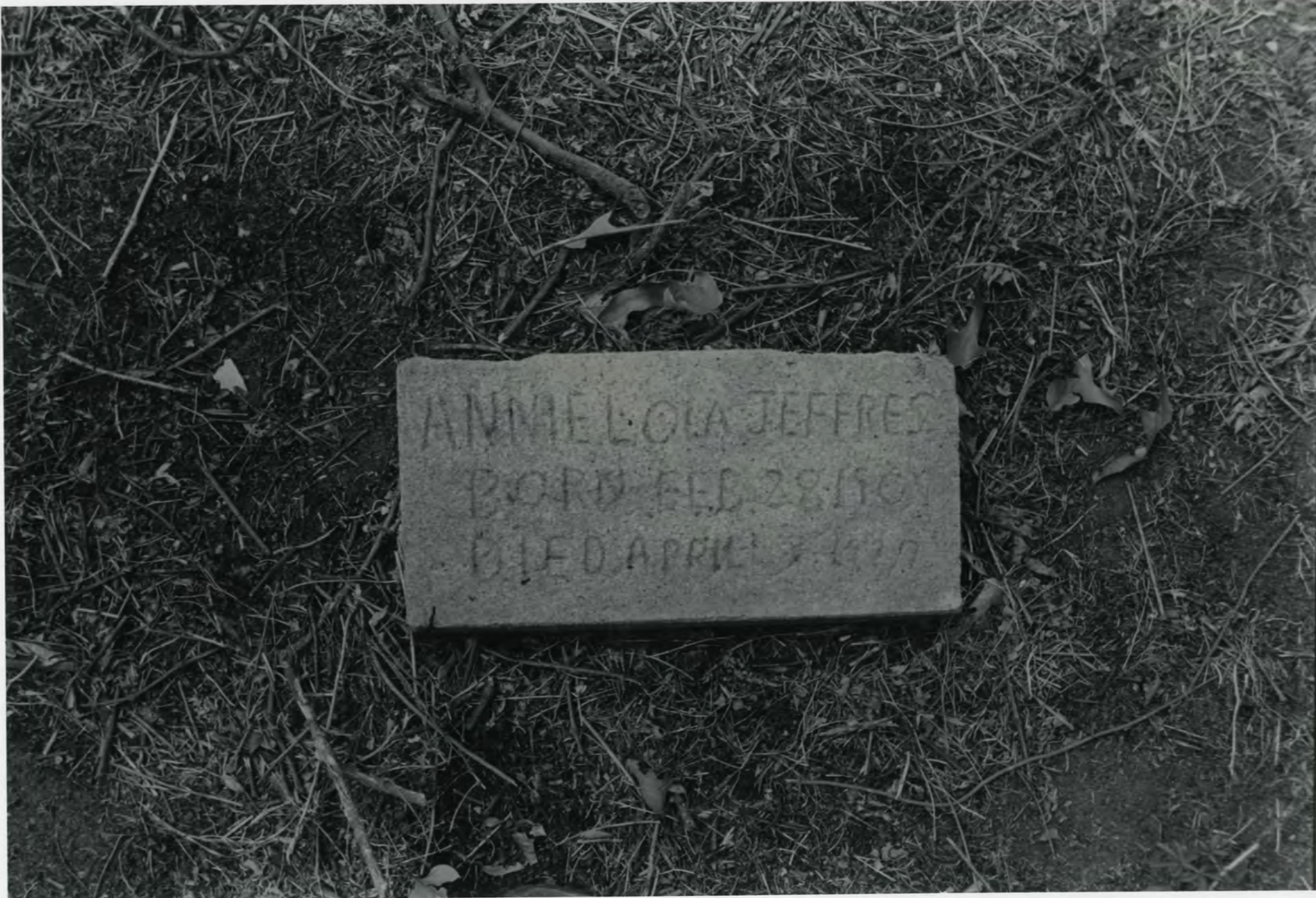
Holly Hope

06/23/11

ON file at AHP

View from NW

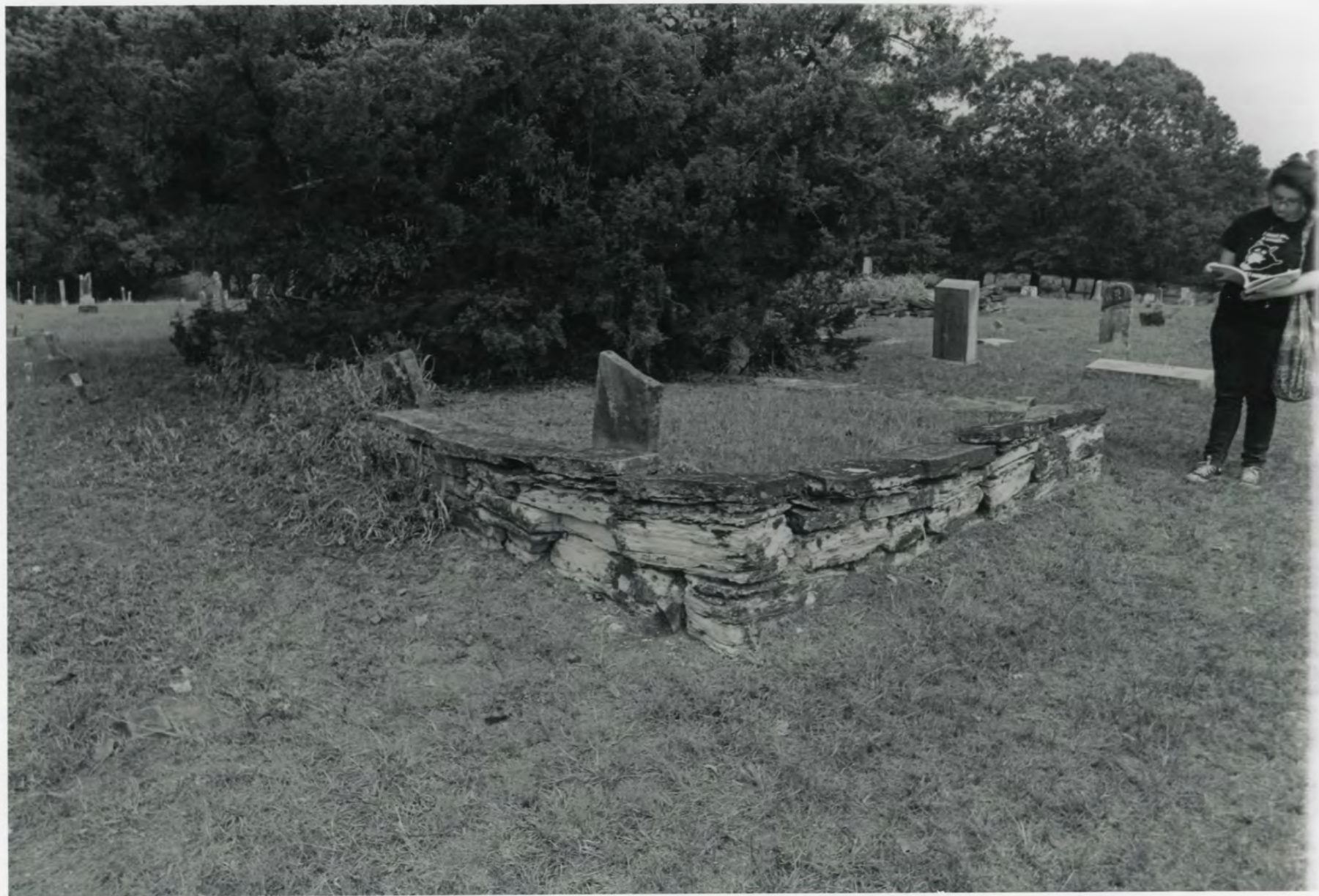




ANNIE LOA JEFFREY  
BORN FEB. 28 1861  
DIED APRIL 2 1917

Old Corinth Cemetery, Vernacular Concrete Marker  
Howard Co, Ar  
Holly Hope  
06/23/11  
on file at AHP  
View from west





Old Corinth Cemetery, Stacked Rock Family plot

Howard Co, Ar

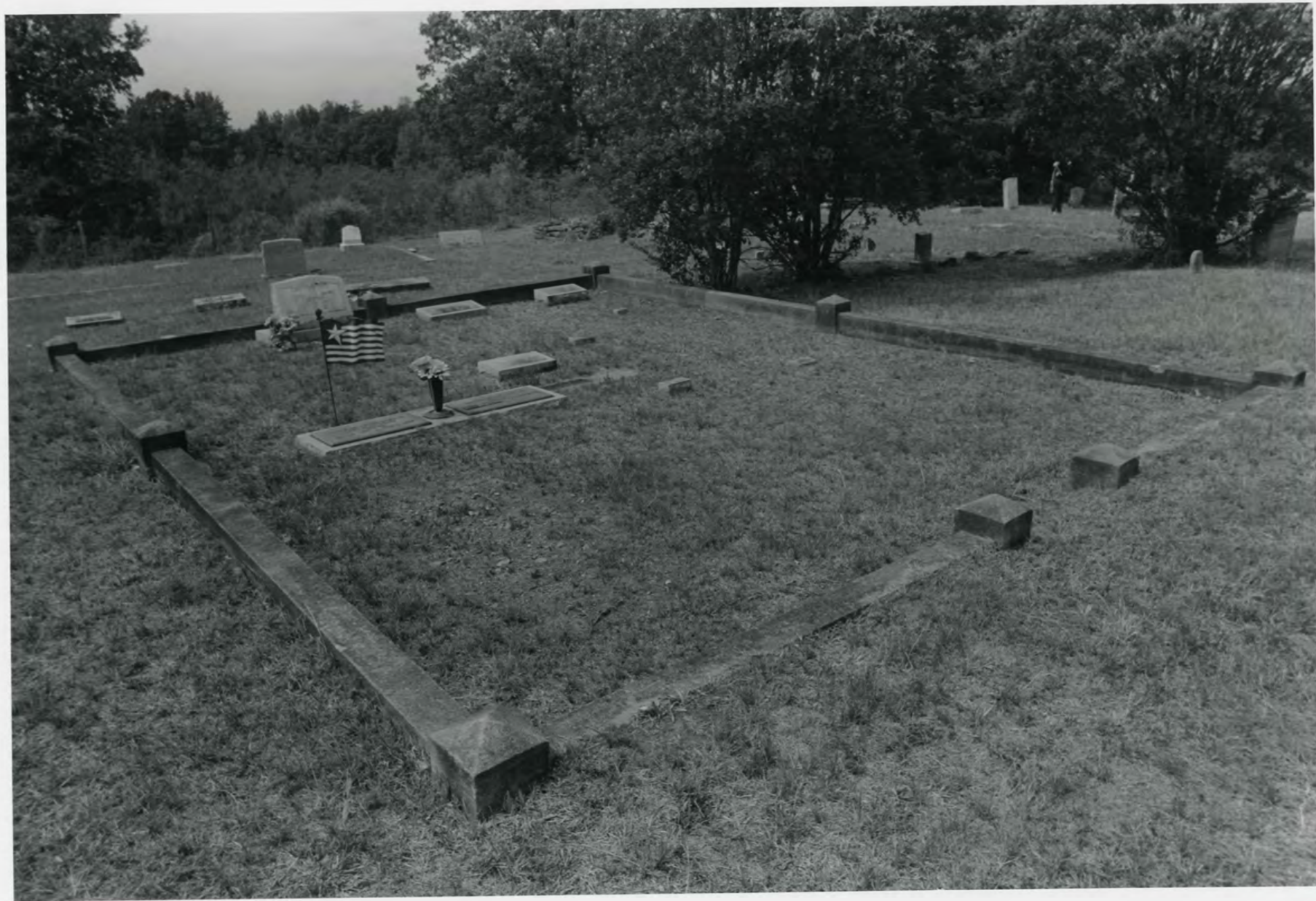
Holly Hope

06/23/11

ON file at CHPP

View from west







Old Corinth Cemetery, Concrete Family Plot

Howard Co, Ar

Holly Hope

06/23/11

ON file at AHPP

View from East



Old Corinth Cemetery, Robinson plot  
Howard Co, Ar  
Holly Hope

02/23/11  
on file at AHP  
View from west







Old Corinth Cemetery, Robinson plot

Howard Co, Ga

Holly Hope

06/23/11

ON file at AHPP

View from East



Old Corinth Cemetery  
Howard Co, Ar  
Holly Hope

06/23/11

ON file at AHP  
View from west





RICHARD T.  
COPELAND  
FEB. 22, 1814  
NOV. 13, 1890

Too good for earth, God  
called him home

Old Corinth Cemetery  
Howard Co, Ar

Holly Hope

04/23/11

ON file at AHP  
View from west







Old Corinth Cemetery

Howard Co, Ar

Holly Hope

06/23/11

ON file at AHPP

View from SW



Old Corinth Cemetery

Howard Co, Ar

Holly Hope

Oct/23/11

ON file at AHPP

View from SE





Old Corinth Cemetery

Howard Co, Ar

Holly Hope

06/23/11

ON file at AHPP

View from NW







Old Coeneth Cemetery

Howard Co, Ar

Holly Hope

06/23/11

ON file at AHPP

View from NE



Old Corinth Cemetery

Howard Co, AR

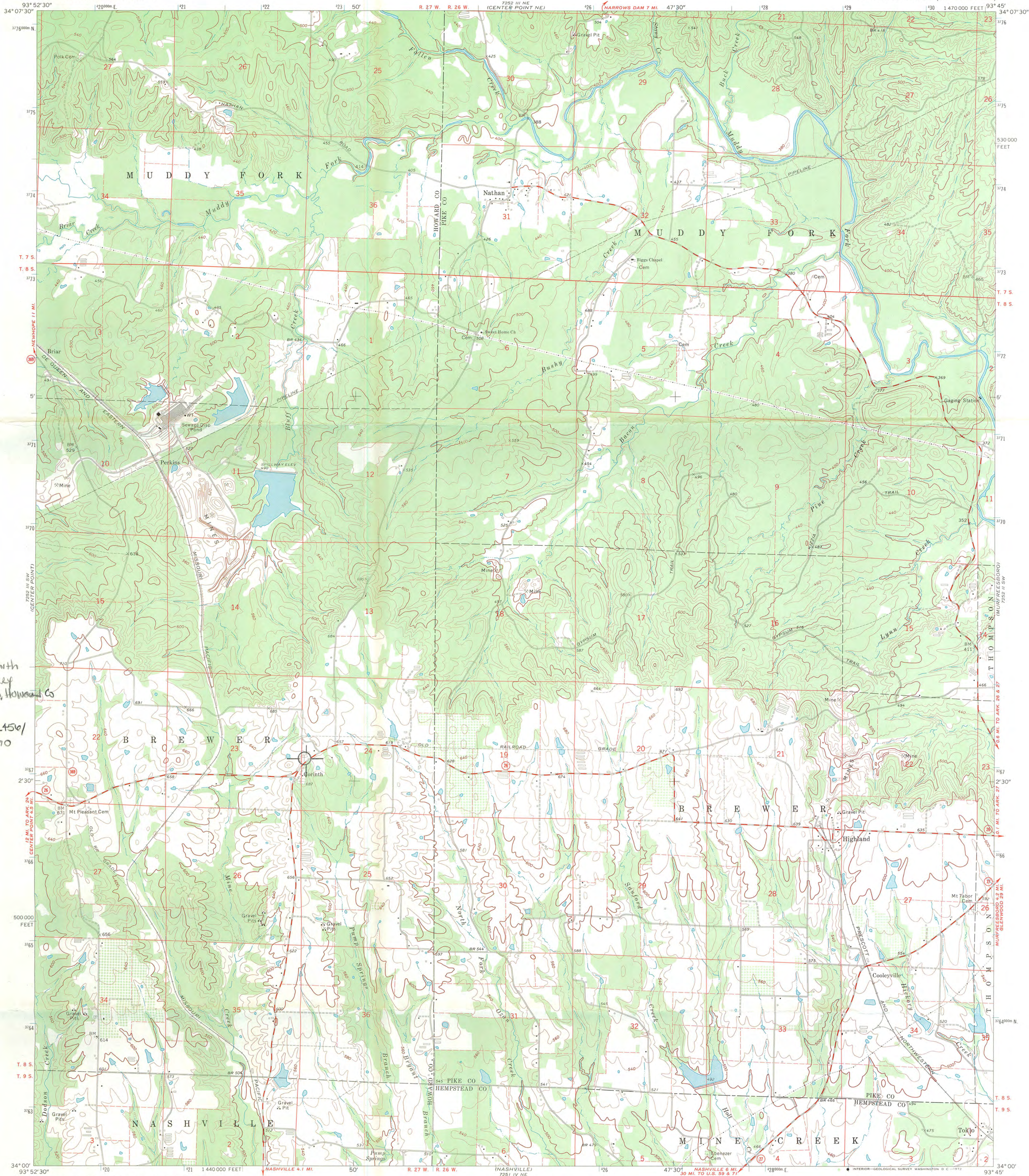
Holly Hope

06/23/11

on file at AHPP

View from SW

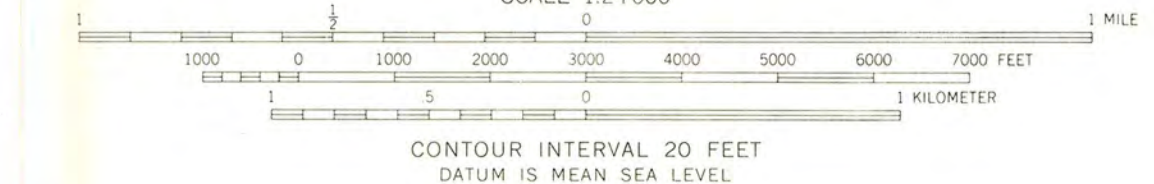
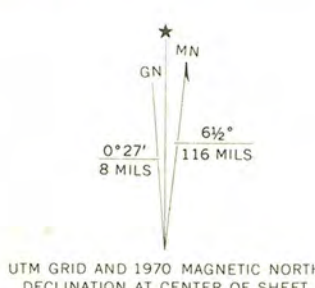




Old Corinth Cemetery  
Corinth, Howard Co  
AR  
15422450/  
3767370

MINERAL SPRINGS  
NORTH  
729 14 NW

Mapped, edited, and published by the Geological Survey  
Control by USGS and USC&GS  
Topography by photogrammetric methods from aerial  
photographs taken 1968. Field checked 1970  
Polyconic projection. 1927 North American datum  
10,000-foot grid based on Arkansas coordinate system, south zone  
1000-meter Universal Transverse Mercator grid ticks,  
zone 15, shown in blue  
Fine red dashed lines indicate selected fence and field lines where  
generally visible on aerial photographs. This information is unchecked



ROAD CLASSIFICATION  
Secondary highway, all weather, Light-duty road, all weather,  
hard surface  
Unimproved road, fair or dry  
weather  
State Route

THIS MAP COMPLIES WITH NATIONAL MAP ACCURACY STANDARDS  
FOR SALE BY U. S. GEOLOGICAL SURVEY, DENVER, COLORADO 80225, OR WASHINGTON, D. C. 20242  
AND BY THE ARKANSAS GEOLOGICAL COMMISSION, LITTLE ROCK, ARKANSAS 72201  
A FOLDER DESCRIBING TOPOGRAPHIC MAPS AND SYMBOLS IS AVAILABLE ON REQUEST

NATHAN, ARK.  
N 3400-W9345/7.5

1970

AMS 7252 III SE-SERIES V884