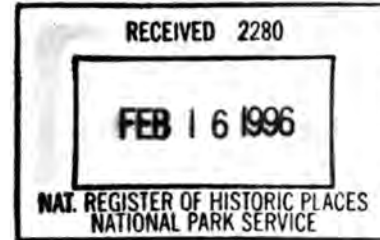


271

**United States Department of the Interior
National Park Service**



**National Register of Historic Places
Registration Form**

This form is for use in nominating or requesting determinations for individual properties and districts. See instructions in How to Complete the National Register of Historic Places Registration Form (National Register Bulletin 16A). Complete each item by marking "x" in the appropriate box or by entering the information requested. If any item does not apply to the property being documented, enter "N/A" for "not applicable." For functions, architectural classification, materials, and areas of significance, enter only categories and subcategories from the instructions. Place additional entries and narrative items on continuation sheets (NPS Form 10-900a). Use a typewriter, word processor, or computer, to complete all items.

1. Name of Property

historic name Falmouth Village Green Historic District

other names/site number _____

2. Location

street & number Parts of Main Street, North Main Street, Palmer Avenue,
Locust Street and Hewins Street N/A not for publication

city or town Falmouth N/A vicinity

state Massachusetts code 025 county Barnstable code 001 zip code 02556

3. State/Federal Agency Certification

As the designated authority under the National Historic Preservation Act of 1986, as amended, I hereby certify that this nomination request for determination of eligibility meets the documentation standards for registering properties in the National Register of Historic Places and meets the procedural and professional requirements set forth in 36 CFR Part 60. In my opinion, the property meets does not meet the National Register Criteria. I recommend that this property be considered significant nationally statewide locally. (See continuation sheet for additional comments.)

Judith B. McDonough / JBS

Feb. 15, 1996

Signature of certifying official/Title Judith B. McDonough, Executive Director Date
Massachusetts Historical Commission, State Historic Preservation Officer

State or Federal agency and bureau

In my opinion, the property meets does not meet the National Register criteria. (See continuation sheet for additional Comments.)

Signature of certifying official/Title

Date

State or Federal agency and bureau

4. National Park Service Certification

I, hereby certify that this property is:

- entered in the National Register See continuation sheet.
- determined eligible for the National Register See continuation sheet.
- determined not eligible for the National Register
- removed from the National Register
- other (explain): _____

Signature of the Keeper

Patrick Andrus

Date of Action

3/27/96

Falmouth Village Green Historic District
Name of Property

Barnstable County, MA
County and State

5. Classification

Ownership of Property

(Check as many boxes as apply)

- private
- public-local
- public-State
- public-Federal

Category of Property

(Check only one box)

- building(s)
- district
- site
- structure
- object

Number of Resources within Property

(Do not include previously listed resources in the count.)

Contributing	Noncontributing	
79	20	buildings
2	1	sites
6	1	structures
2	2	objects
89	24	Total

Name of related multiple property listing

(Enter "N/A" if property is not part of a multiple property listing.)

N/A

Number of contributing resources previously listed in the National Register

0

6. Function or Use

Historic Functions

(Enter categories from instructions)

DOMESTIC: single dwelling; secondary structure

RELIGION: church, parsonage

COMMERCE: specialty store

FUNERARY: cemetery

LANDSCAPE: plaza, garden

Current Functions

(Enter categories from instructions)

DOMESTIC: single dwelling; secondary structure, hotel

RELIGION: church, parsonage

COMMERCE: specialty store

FUNERARY: cemetery

LANDSCAPE: plaza, garden

7. Description

Architectural Classification

(Enter categories from instructions)

COLONIAL: Georgian

EARLY REPUBLIC: Federal; MID 19th Century: Greek

Revival, Gothic Revival; LATE VICTORIAN:

Italianate, 2nd Empire, Queen Anne, Shingle Style

LATE 19TH AND 20TH CENTURY REVIVALS:

Colonial Revival, Classical Revival

Materials

(Enter categories from instructions)

foundation Stone, Brick, Concrete

walls Wood Shingle, Clapboard

roof Wood Shingle, Asphalt Shingle, Slate

other

Narrative Description

(Describe the historic and current condition of the property on one or more continuation sheets.)

United States Department of the Interior
National Park ServiceNational Register of Historic Places
Continuation SheetFalmouth Village Green Historic District
Falmouth (Barnstable County)
MassachusettsSection number 7 Page 1**7. DESCRIPTION**

The Falmouth Village Green National Register Historic District is located at the triangular intersection of roads leading to West and North Falmouth, East Falmouth, and Woods Hole. Falmouth is located at the southwestern corner of the Cape Cod peninsula, Barnstable County. It is a town of 44 square miles, with about 75 miles of coastline. Its population of 27,000 year-round residents doubles in the summertime. The towns of Bourne and Sandwich join Falmouth to the north, and Mashpee adjoins it to the east, while Vineyard Sound bounds the town on the south and its western edge is bordered by Buzzards Bay. The town includes a number of small villages, with Falmouth Village, in which the nominated district is located, constituting its institutional and commercial core, as well as the site of its earliest linear development. The district is about a mile from Vineyard Sound to the south and separated by hills from Buzzards Bay on the west.

The district includes a mix of residential, institutional, and commercial buildings, most dating from the late 18th to the mid 19th centuries. The district contains examples of architectural styles from the Colonial through the Neoclassical, including Georgian, Federal, Greek Revival, Italianate, Queen Anne, Victorian Gothic, Shingle Style, Stick Style, and Colonial Revival. Also within the district are the one-acre Town Common, or Village Green, from which the district takes its name. The Old Burying Ground is a second major open space included in the district. Several designed landscapes of note are present, including the siting and grounds of St. Barnabas Church, designed by Frederick Law Olmsted, and a colonial-style garden at the Wood House, the property of the Falmouth Historical Society.

Buildings in the district face the village green as well as lining several streets--Main Street, also known in certain portions as Palmer Avenue; North Main Street; Locust Street; and Hewins Street. Buildings are generally set at the fronts of well-landscaped, though often small, lots. Many have outbuildings--barns, carriage houses, garages, or small sheds. Buildings are primarily two to 2 1/2 stories in height, shingle- or clapboard-sheathed. A variety of fencing materials (such as picket fences of various designs, granite walls, and wrought iron and pipe railings), tall trees (including horse chestnut, elm, maple and locusts), and small gardens enhance the district setting. The district includes 89 contributing and 23 noncontributing buildings, structures, and objects.

Buildings in the district are in good to excellent condition. Most have been restored periodically and in most cases the restorations have been in keeping with the original structures. An important exception is the Falmouth National Bank (MHC #688, Map #16), established on the Green in 1821 as the first bank on Cape Cod. Until 1951, the building was a wood-frame, one-story, Cape-style structure with a classical pediment with wooden fan, and a full-length front porch. In 1951, that building was replaced by a more imposing brick building with four wooden columns supporting a central entablature and pediment that projects slightly from the facade. Windows are 12/12.

(continued)

United States Department of the Interior
National Park ServiceNational Register of Historic Places
Continuation SheetFalmouth Village Green Historic District
Falmouth (Barnstable County)
MassachusettsSection number 7 Page 2

Two federal-era buildings were modernized in the second half of the nineteenth century--the Queen Anne-style alterations to the Braddock Dimmick House at 40 Main Street (MHC #15, Map #21) and the Shingle style expansion of the Thatcher Lewis House at 105 Locust Street (MHC #59, Map #53). There has been some use of artificial siding. The Queen Anne-style house at 73 Palmer Avenue (MHC #22, Map #28) has lost detail to aluminum siding. Aluminum siding covers the Falmouth Coal Building at 21 North Main Street (MHC #739, Map #36) and vinyl siding covers the Capt. Thomas Lawrence House at 75 Locust Street (MHC #56, Map #48). One of the oldest houses in the district, Zimri Tobey's Cape at 38 Locust (MHC #54, Map #45), now has solid glass windows in place of multipaned sash.

Over the centuries at least six houses have been demolished and replaced by other buildings. Three others have been demolished and not replaced, including the four-bay, 2 1/2-story house once attached to the bank and Falmouth's first post office on Palmer Avenue. Locust Street has suffered two of the more recent losses in the demolition of an 18th century house and its replacement by a convenience store in the 1960s (Map #47) and the loss to fire of an 1839 Greek Revival-style house at 29 Locust Street in 1991 (Map #42).

Buildings have been moved into and out of the district. More than seventy years ago, three were moved into the district--the Rawson Jenkins House (MHC #22, Map #28) from East Falmouth, the Swift real estate office (MHC #701, Map #15c) from Depot Avenue, and the Village Primary School (MHC #744, Map #35) from what is now Town Hall Square. Two buildings, the Succanessett House Inn (MHC #736) and the Jenkins whaling supply store, are known to have been moved out of the district. Three have been moved slightly within the district. They are: the Consider Hatch House (MHC #685, Map #9), which once fronted directly on the Green and which has been moved back from the street and to the west; the Braddock Dimmick House (MHC #15, Map #21), which was moved closer to the Grannis House (Map #22) in the 1880s; and the Falmouth Coal and Oil Building (MHC #739, Map #36), which was moved from the Watson house site (Map #2) in the 1850s.

A discussion of key and representative buildings and landscapes in the district follows.

Residential Buildings

The Conant (Palmer) House, 65 Palmer Avenue (MHC #487, Map #26), a 2 1/2-story, weathered shingle half house with a central brick chimney, is documented as the oldest house in the district, dating to ca. 1730. The granite foundation contains a partial basement. Windows are 6/6. Wood shingles cover the roof. Although the house is of post and beam construction, corner posts in the upper and lower front rooms are not visible as they were hewed to receive the interior lath and plaster. The lath is hand-split and the nails hand wrought. The panelled interior doors date to the last quarter of the eighteenth century and the original hardware has been replaced. The house has been added to over the years. Captain Davis Hatch, a builder and carpenter who owned the house in the 1850s, may

(continued)

United States Department of the Interior
National Park ServiceNational Register of Historic Places
Continuation SheetFalmouth Village Green Historic District
Falmouth (Barnstable County)
MassachusettsSection number 7 Page 3

have enlarged it and updated decorative details. A wing and porch added ca. 1900 were removed in 1966.

The Conant House fronts Palmer Avenue and is just off the Village Green. Across the front is a picket fence. The house is part of a two-acre park owned by the Falmouth Historical Society. At the rear of the house, a 1991 one-story addition houses the Society office, library, archives, and a steel vault for the storage of rare documents. Behind and now attached to the addition is the ca. 1850 privy.

The house of Capt. John Hatch Jr. at 103 Main Street (MHC #700, Map #14), built ca. 1750, is a typical early Falmouth house, four bays wide, 2 1/2 stories in height. The modest lines of this three-quarter house are masked by a one-story open portico, with pediment with modillioned cornice at the doorway. The portico, identical to the one on the 1812 Nathaniel Shiverick House across the street (MHC #1, Map #15), is held up by Doric columns; similar half columns mark the ends of the portico on the house. The wall under the portico is covered in vertical boards. The door has two bullseye panes in the upper portion. A brick chimney rises from the center of the house. The foundation is red painted brick. A white trim board separates the foundation from the shingle siding. A two-story ell that drops to one story has been added to the back, and in 1830 a one-story porch was added to the east side. The house was formerly painted white. It was reshingled in 1993 with shingles stained grey, and 6/12 sash windows were replaced by thermopane, true-divided-light windows. The black shutters were removed. A picket fence runs in front of the house, which is presently the rectory of St. Barnabas Church. There is a one-car stucco garage (ca. 1930) behind the house.

The Benjamin Sanford House at 57 Main Street (MHC #686, Map #11), was built between 1750 and 1775. It is a two-story, five-bay New England colonial, sided in shingles. An enclosed pedimented one-story portico marks the entrance. One-story wings on either side of the house were added in the early 20th century and give a horizontal emphasis. A large brick chimney is almost at the center of the house. Wood shingles cover the roof. The windows are 6/6. A two-story ell and detached stucco garage and greenhouse extend from the back. The house is sited close to the road and a picket fence fronts the lot. A driveway is located on the west side. The house is presently a bed and breakfast inn. A small 1890s stable with cupola, located behind the house, now belongs to 71 Main Street (Map #12) next door.

The Capt. John Grannis House (MHC #16, Map #22) of 1765, at 14 Hewins Street, began as a three-quarter house but was expanded to a full five bays after the Revolution. Its facade is clapboard, while the sides and rear are wood shingled. The doorway is framed by simple pilasters, and the door is surmounted by a multilight transom. The entrance porch supported by four Doric columns and topped by a balustrade is a later addition. Windows are 6/6. In 1926, the one-story side wing was added for office space.

(continued)

United States Department of the Interior
National Park ServiceNational Register of Historic Places
Continuation SheetFalmouth Village Green Historic District
Falmouth (Barnstable County)
MassachusettsSection number 7 Page 4

The Consider Hatch House of ca. 1767 located at 37 Main Street (MHC #685, Map #9) is a fine Georgian-period residence. Its windows are balanced symmetrically on either side of the entrance. A large chimney, painted white, rises from the center of its hip roof. The entrance, updated between 1820 and 1830, is framed by a transom and sidelights between paneled pilasters. It is sheltered beneath a hip-roofed portico, supported by four Doric columns.

The Ebenezer Nye House, 49 Locust Street (MHC #55, Map #46), also dates to ca. 1767. It is a five-bay structure that was initially only one room deep. The weathered shingle house has an enclosed portico with pediment and sidelights at the center entrance. Windows are 6/6. A small chimney replaces the original. The house was renovated into office space in 1985 while maintaining its austere appearance. At some unknown date, other two-story buildings have been added to the back of the house to increase its depth.

The Capt. Zimri Tobey House at 38 Locust Street (MHC #54, Map #45) may date to before the Revolution, though it could be as late as 1794, the year of Tobey's marriage. The house stands very close to the road. It began as a half-Cape with transom windows over the door and was enlarged to a five-bay Cape prior to 1920. The house has a steep roof with three dormers, added in the early 20th century. An ell also dates to the early 1900s. The front windows were replaced in the 1980s with single panes of glass. Capt. Tobey died in Charleston, South Carolina, in 1824. In 1854, the house was bought by Edward Butler, who drove a stagecoach to Woods Hole to meet incoming boats and pick up mail. A stable/carriage house at the back has been converted to offices.

The Dr. Francis Wicks House at 55 Palmer Avenue (MHC #21, Map #24), of 1790, also known as the Wood House, is among the most imposing in the district. It is a 2 1/2-story, five-bay Federal house with a wood-shingled hip roof. It features an elegant, two-tiered Early Classical Revival portico with pedimented roof. There are four evenly spaced Doric columns on each level, those on the second level hold up the triangular pediment with a modillioned cornice and central medallion. Behind the portico, eight Doric half-columns are applied to vertical boards on the facade, four on each level. The remainder of the main block is shingle sheathed. Two interior brick chimneys pierce the hipped roof, joined by a balustraded deck. Below, two gabled dormers are located on either side of the portico pediment. Windows are 6/6. A long, one-story ell runs off the back. The foundation is of stone. A low granite horse trough stands outside the side door of the ell.

The house's interior plan is two rooms deep, around a central hall; one long rectangular room has been created from the two rear rooms. Eighteenth-century handblocked French wallpaper taken from a West Falmouth house has been installed in the entrance hall and stairway. This house is smaller and more delicate than its hip-roofed neighbor at 54 Main Street, the Capt. Bodfish House, described below.

(continued)

United States Department of the Interior
National Park ServiceNational Register of Historic Places
Continuation SheetFalmouth Village Green Historic District
Falmouth (Barnstable County)
MassachusettsSection number 7 Page 5

A picket fence runs along the street. To the east behind a driveway and parking area stands a ca. 1795 side-gabled English barn with two wide and tall central sliding doors for carriage or sleigh. A narrow strip of window lights runs horizontally above the doorway. On either side of the entrance are a small window and door. The roof is covered in wood shingles.

On the west side of the house is a formal garden in the colonial style, established by the Falmouth Garden Club in 1947 on a design of Paul Frost, a Cambridge landscape architect. The garden club won the state federation prize for the garden in its first year. A square gazebo (also 1947) at the north end of the garden leads into a wooded memorial garden on the remaining part of the two-acre site, which runs to Katharine Lee Bates Road.

Sitting on the northwest corner of the Green, the Captain William Bodfish House, 54 Main Street (MHC #20, Map #19), of 1814, is a large, square, two-story Federal house, five bays wide and five bays deep. It is topped with a hip roof, balustraded "widow's walk," square cupola, and four tall brick interior chimneys, painted white. Three of the chimneys line up perpendicular to the facade. The fourth chimney on the northwest side parallels the facade. There are four skylights in the roof, one on each side of the house. Early photographs show the skylight in the front. The house was resingled and repainted white in 1991. Wooden shutters edge the 6/6 windows. At the entrance is an open portico with Doric columns. Sidelights are at the door between sets of pilasters. A second entrance with portico is located on the west side. A small one-story addition joins the building at the northwest corner. The house sits behind a rail fence enclosing the 1.2-acre lot; the five-rail fence has been steam bent to curve around to the sideyard. The property closest to the house is landscaped with low shrubs. Several holly trees stand behind the two-stall garage, beyond which is a parking lot for the adjacent church. The house now serves as the First Congregational Church Manse.

The house has a stone foundation, providing a small cellar area with a brick floor. The interior retains many of its decorative moldings and three fireplaces. The broad front stairway in the central entrance hall has been carpeted, but the narrow back stairs off the kitchen are the steep, plain original board stairs.

The Katharine Lee Bates House, 16 Main Street (MHC #681, Map #4), was built by Mayhew Hatch in 1810. This five-bay, two-story dwelling features a Doric-columned portico with pilasters around the sidelights at the door. The 6/6 windows across the front are accented with dark shutters. There are two interior chimneys, one rising from the roof ridge on the west side and the other rising from behind the ridge on the east side. The house sits on a stone foundation; several additions have been made to the back. The house was re-sided in shingles, painted white, in 1993. A 33-star American flag flies daily from the flagpole in front of the house. At the foot of the pole is a stone marker; and in front of that a wooden sign with a profile of Katharine Lee Bates, who wrote "America The Beautiful." On the west front lawn is another granite stone, this one memorializing Miss Bates and her birthplace. On the sidewalk is a granite mounting block sitting two inches above the sidewalk. A grey granite hitching post had been located about four feet west of the block, but it has been broken off to the

(continued)

United States Department of the Interior
National Park ServiceNational Register of Historic Places
Continuation SheetFalmouth Village Green Historic District
Falmouth (Barnstable County)
MassachusettsSection number 7 Page 6

level of the walk. Until the early 20th century, there was a barn behind the house to the east. It was drastically remodeled in 1917 into a Dutch Colonial house (Map #6), which is now on a separate lot at

20 Main Street.

An interior feature of note is the paneling, painted white, which surrounds the dining room fireplace from floor to ceiling. One panel covers what used to be a Dutch oven. Narrow back stairs, "steep as a ship's ladder," lead almost directly to a small bedroom on the second floor, which is presumed to have been that of Miss Bates. Behind but attached to the kitchen remains the two-holer privy, one child size and one adult. The house is owned by the Falmouth Historical Society, which opened it as a museum to honor Miss Bates during the 1980s. The society now rents it.

The five-bay Nathaniel Shiverick House (MHC #1, Map #15) at 98 Main Street was built in 1812 with a shallow hip roof, twin interior chimneys and a covering of narrow clapboards. It has a pedimented portico with modillions at the cornice and Doric columns, similar to the Capt. Hatch house (MHC #700) across the street. The door also has two glass panes in the upper segment. The entry portico is supported by Doric columns. A 20th century enclosure inside the columns was removed in 1993. The narrow clapboards and 6/6 windows were replaced with replicas in 1993. The chimneys have been coated in cement. The caps of the fenceposts of the four-rail fence that fronts the house are painted green, similar to the original fenceposts of the Green (most other wooden fences on properties around the Green are presently painted white). The four-bay, shingle-sheathed house at 96 Locust Street (MHC #57, Map #51), home of housewright Warren Gifford, was built in 1795. The house has a modillioned cornice and an entryway with flat entablature and pilasters surrounding a door with a five-light transom. A two-story ell at the back drops to a one-story ell.

The Thatcher Lewis House at 105 Locust Street (MHC #59, Map #53) is a 2 1/2-story Shingle Style house that originated ca. 1800 as a five-bay house. Although it was drastically altered to its present appearance in 1881, the central brick chimney and the lines of the original roof and entrance portico are still visible. The late 19th century alterations gave the house a decided horizontal emphasis with irregular massing, as the roofline was brought forward to flow over the two-story addition on the north side of the house. This addition includes a broad, projecting polygonal bay on the second floor of the facade, and an integral porch on the north side. Two-story additions were also appended to the rear of the house. The architect for the alterations was Frank Hill Smith. The front entry, flanked by five-paned sidelights, is sheltered behind a projecting portico. Windows in front are 24/18 and 24/12; elsewhere, there are a few windows with large central panes surrounded by small bullseye panes. Curved shingles accent the bay window on the facade. The house was painted white in 1939; prior to that date, the shingles were a weathered brown.

(continued)

United States Department of the Interior
National Park ServiceNational Register of Historic Places
Continuation SheetFalmouth Village Green Historic District
Falmouth (Barnstable County)
MassachusettsSection number 7 Page 7

The Thomas Lawrence House at 95 Locust Street (MHC #58, Map #52), ca. 1830, is two stories high and one room deep with a hip roof. It has two brick chimneys at the back of the house. In the center front is a two-tiered portico with pediment somewhat similar to the Dr. Francis Wicks House (MHC #21) built forty years earlier, but the columns and windows are taller, suggesting higher ceilings in this house. A door opens off the second floor of the portico. The four columns are Doric on the first level and boxed on the second level, with a railing along the edge and a small railing along the ceiling. It is shingle-sided, except for the area behind the portico, which is covered with vertical boards with two half-columns supporting the portico. There is a fanlight over the door. Although the basic house is one room deep, a wide two-story addition runs along three quarters of the back; a two-story ell further enlarges the addition. The oversized windows are 6/6. The foundation is brick. The house is set close to the road on a very small lot landscaped with white rhododendrons, azaleas, and leucothe.

The Erasmus Gould House, 78 Main Street (MHC #18, Map #17), of 1852, is a 2 1/2-story Italianate house with a modified rectangular plan, an intersecting gable roof, and a one-story front porch. The exterior of the house is covered with clapboards on the facade and cedar shingles on the back and sides of the building. Both the main body of the house and the porch are trimmed with brackets, single and paired. The porch is flat-roofed, with square columns supporting a series of arches. Pilasters define the corners of the house. The foundation is granite block; the three chimneys are red brick; and all other architectural details are wood. On the sidewalk in front is a slightly raised, chipped granite mounting block. Behind the house and accessible from the driveway is a parking area and a small one-car garage that bears no apparent architectural relation to the house. The exterior of the house was refurbished in 1989 in keeping with the original design.

The aptly named Mostly Hall at 27 Main Street (MHC #684, Map #8) is a square, hip-roofed, three-bay, clapboard-sheathed house surrounded by a raised verandah. Tripartite windows are floor length on the first floor and somewhat shorter on the second floor. Ceilings are thirteen feet high. A large square cupola rises from the roof. The bracketed roofline reflects the Italianate, but the verandah is more suggestive of the French influence in Louisiana. The house got its name in the late 19th century for its interior plan, marked by thirty-foot-long hallways upstairs and down. A tall iron fence interspaced with granite pillars separates the house and its garden from the street. A rhododendron hedge lines the front and the west side of the yard. A brick sidewalk runs in front. The former caretaker's cottage across the street at 24 Main Street (MHC #683, Map #7) began as a half-Cape and has been expanded to the side and back.

The Kate Watson House at 4 West Main Street (MHC #679, Map #2), built in 1897, is a three-story, cross-gabled house in the Queen Anne style. It is sheathed in clapboard on the ground floor and shingles of two different patterns on the upper stories. It is presently painted red with yellow trim. It features an arched recessed balcony in a third-floor gable pediment that projects out above a bay window on the second floor. A one-story porch with turned spindles runs along the front. There is a mix of fenestration throughout, including stained glass and diamond lights elaborating large single

(continued)

United States Department of the Interior
National Park ServiceNational Register of Historic Places
Continuation SheetFalmouth Village Green Historic District
Falmouth (Barnstable County)
MassachusettsSection number 7 Page 8

panes, and multipaned fixed windows. The triangular pediment of the porch entrance and the west side gable are marked with half-timbered trim.

A driveway on the north side leads to a two-car garage. A large copper beech stands on the east side; in front is a younger weeping willow. The yard is edged with a picket fence on Main Street and large boulders and shrubs on North Main Street. Behind the house, a large stable was converted in 1923 into a grey clapboard and shingle, two-door apartment house (Map #37) that is now identified as 13-15 North Main Street. A high privet hedge and a row of five trees run in front of the apartment house.

The 1899 William C. Davis House, 70 Palmer Avenue (MHC #23, Map #27), is a three-story Shingle Style structure, rectangular in plan with a projecting gable and porch. The house is covered with red cedar shingles except for the pediment of the projecting gable which has exposed wooden structural members reminiscent of the earlier Stick Style. The gable pediment also has a Gothic-style arch cut into the eave to allow more light to reach the attic window. The most notable feature of the house is the eyebrow dormer window on axis above the front door. Other architectural details include brackets, dentil molding, Doric-style columns supporting the front porch, and a Palladian window in the third-floor side gable, facing east. A large plate-glass window elaborated with a horizontal strip of stained glass marks the living room. The foundation is fieldstone and the chimneys are brick.

The house fronts northeast onto Palmer Avenue, one house down from the Village Green. It is adjacent to several other Queen Anne, Stick, and Shingle Style residences also built in the late 1800s. A dirt driveway on the northwest side leads to a small garden shed behind the house, which appears to have been built at the same time. The garage has a steeply pitched roof and an elaborate vergeboard. The house is in good condition.

Nonresidential Buildings

The First Congregational Church, 68 Main Street (MHC #19, Map #18), was begun in 1796, but vastly altered in the mid 19th century, achieving its present appearance as essentially an Italianate-style building in 1857. The frame was moved from its original location directly on the Green to its present site in 1856 after an existing house was removed. At that time, a five-foot-high granite block foundation was built for a vestry. The foundation required five stairs leading to the entrance. A new three-staged clocktower and belfry was built to contain the 1796 Paul Revere bell, and a spire was added to the steeple. At the center entrance is a projecting two-story, gable-roofed enclosure with three narrow round-headed windows rising above a double door set beneath an arch. Pilasters define both the main block and the vestry; quoins trim the edges here and on the main building; and large singular brackets further ornament the building. Fenestration consists of long, narrow, round-headed windows throughout.

(continued)

United States Department of the Interior
National Park ServiceNational Register of Historic Places
Continuation SheetFalmouth Village Green Historic District
Falmouth (Barnstable County)
MassachusettsSection number 7 Page 9

The clapboard-sided church, originally painted white, was painted tan with dark brown trim in the last half of the 19th century. Since 1925, it has again been painted white.

Additions to the rear of the building were made in 1958 and again in 1992. The latter addition consists of a gabled roof, 1 1/2-story, white aluminum-sided building. This addition stands on the site of the 1897 carriage shed, which was demolished in 1962. In 1958, the Victorian interior was changed to Colonial Revival style. The metal ceiling was removed, metal columns supporting the balcony were encased in wood, and Victorian globes were changed to Colonial-style candelabra. The front of the church is framed by several large trees and there is an old stone wall and lane to the left of the church leading to the landscaped parking area. The church property extends to Katharine Lee Bates Road.

St. Barnabas Memorial Episcopal Church, Main Street (MHC #689, Map #13), designed by Boston architect Henry Vaughan, was built in 1890 in an English Gothic style using large ashlar blocks of gray granite with dark red sandstone trim. The building consists of a main block, corner bell tower, entry porch with vestibule, and several wings. The three-story, spire-topped stone tower with buttressing stands at the northwesterly corner. The two-door pointed-arch entrance is in a gabled one-story enclosed porch projecting from the main block. Stained glass and leaded diamond-shaped panes are set within pointed-arch window openings.

The church sits back from Main Street, and its companion one-story stone Parish House (Map #13b) built around the same time, is located further back from the established setback around the Green. The long side of the rectangular parish house faces the street. Its steep hip roof is broken by five gable pediments above three pointed-arch windows and two pointed-arch doors. A narrow conical spire, copper-tipped, rises from the roof. The windows are diamond-paned. Three similar windows line the south side of the building so that from the street, one can see through the building to the pond behind. The sidewalk in front of the church is several feet above street grade, requiring a railing along the walk. A fieldstone wall, also built in the 1890s, runs along the west side of the property, turning to run about five feet along Main Street/north side to shelter a bench. Large trees once lined the sidewalk in front of the church, but they are fewer in number today. Also on the three-acre site are a large parish hall built in 1958 (Map #14c), and a chapel created in 1962 in the former carriage sheds (Map #14d), which were built of stone in 1894. A formal garden lies between the parish hall and the chapel. The garden and secondary buildings are located behind the church, overlooking Sider's Pond. A large parking lot is sited in front of the parish hall.

The Queen's Buyway and Parkway summer shopping complex, Palmer Avenue at North Main Street (MHC #741, Map #s 32, 34), is composed of three long and two small, 1 1/2-story buildings with Colonial Revival detailing. Two of the long buildings are on the north side of Palmer Avenue, and the one on the south side continues around the corner to North Main Street. A tower with a balcony and cupola suggests a lighthouse and forms the centerpiece of the complex at the corner of Palmer

(continued)

United States Department of the Interior
National Park ServiceNational Register of Historic Places
Continuation SheetFalmouth Village Green Historic District
Falmouth (Barnstable County)
MassachusettsSection number 7 Page 10

Avenue and North Main Street. Altogether, the complex provides an attractive Palmer Avenue entrance to the Village Green district.

There are twelve stores on the south side including two small detached buildings, one at either end, and ten stores in the two northside buildings. All the buildings are covered with weathered wooden shingles and white trim boards. The south side, the Queen's Buyway, was constructed in 1925. The facade is broken up so that some storefronts with gables project out from the main building. The gables have large oval windows and some of the doorways have large elaborate pediments. The two buildings on the north side, known as the Parkway, were built in 1926. They are not as well constructed as the Buyway shops and lack many of its decorative architectural elements. They feature primarily large multi-paned windows and shed dormers in false-front roofs.

The Wood Lumber Complex, 81 Locust Street (MHC #693, Map #50), begun ca. 1908, consists of six buildings. Building #1 contains the retail sales/office area and its Colonial Revival facade fronts on Locust Street. This long, narrow building is the oldest in the complex, appearing on the 1908 map. It is shingle-sided, and one story in the front and two stories in the back. The second story was added in 1961. The entrance and large-pane windows formerly fronted on Locust Street, but the windows were removed and in order to facilitate entry from the parking area, the door was relocated to the side of the building, probably in the 1950s. To enter the Wood Lumber complex today, one turns off Locust Street past a parking area on the left and Building #1 on the right.

Building #2, just past the parking area on the left, consists of two one-story garages joined together with a shed. One garage is clapboard-sheathed, gable-roofed, with wooden double doors, while the other is hip roofed, constructed of textured concrete block with glass-paned wooden doors. Both structures appears on a 1923 map. A chainlink fence attached to the front corner of the concrete garage and running across the entrance road separates the wooden garage and Building #1 from the sheds in the lumberyard proper.

Past the gate, Building #3 is on the right, behind Building #1. This red-painted wooden storage shed was new in the 1920s, according to a photograph on the Wood Lumber office wall, and it appears on the 1930 Sanborn map.

Building #4 is a long, two-story building containing two drive-through sections. The front section is newer than the rear, which dates to the earliest period of the yard and appears on the 1908 map. The gabled peak of the old section faces south and in design is close to that of the center section of Building #3. Part of this wooden shed was long ago lettered "Cypress, Pine, White Wood Molding" on the upper story of the gable end facing the street. The back of this section parallels the railroad tracks, with access doors on both floors allowing easy off-loading from the trains. The doors on the upper floor slide up; the doors on the first floor once opened inward but no longer function, and some have been replaced. The yard no longer receives materials via rail. A newer open shed extending

(continued)

United States Department of the Interior
National Park ServiceNational Register of Historic Places
Continuation SheetFalmouth Village Green Historic District
Falmouth (Barnstable County)
MassachusettsSection number 7 Page 11

south from this older section also parallels the railroad track. This section dates to the early 1940s, when Wood Lumber greatly increased its operation, thanks to the government buildup of nearby Camp Edwards for the war effort.

Building #5 stands south of Building #4. This long building includes a two-story enclosed gable structure opposite the oldest section of Building #4. This section of Building #5 appears on the 1923 Sanborn map. An open storage shed has been added to the east side of the original shed and runs perpendicular to it, with its gabled end facing Locust Street. This addition probably dates to the early 1940s, as it appears on the 1945 Sanborn map.

Building #6 is the newest structure of the complex and sits south of building #5. It replaces two original sheds, which were destroyed by fire in 1968. The new building consists of steel girders supporting a partly translucent aluminum roof, with the floor space totally open for storage.

Landscapes

The Village Green (MHC #s 911, 920; Map #20) is a one-acre triangle of flat, open land bounded by a section of Main Street on the south and on the north and Hewins Street on the west. Two churches, a bank, and nine two-story houses and their trees frame the Green. Most buildings are presently painted white. All but the stone St. Barnabas Church are set close to the sidewalk. Many have picket or white rail fences, paralleling the white two-rail fence around the Green, reinforcing its outline. (The present two-rail fence is a 1956 structure of black locust wood, from trees felled in that year's hurricane; it is said to replicate the cedar original.) The grass-covered Green is edged with trees, mostly elms and pin oaks; a few evergreens surround an electric box. A stonedust path crosses the Green from the corner of Main and Hewins Streets to the center of the eastern side in front of the First Congregational Church (Map #18). The American flag flies daily from a flagpole in the center of the Green. A tricentennial stone marking a time capsule sits in front of the flagpole. A small stone memorial with a wooden wishing well structure (1930) on top stands at the eastern point along with traffic directional signals.

Elijah Swift, the town's leading businessman of the mid 19th century, planted elms around the Green in 1832 and installed the site's first two-rail fence. Swift sought the approval of the town, saying he would remove the trees if the town did not like them. Most of the older elms were destroyed during the 1938 hurricane. An elm on the Green taken down in 1990 because of Dutch Elm disease was 94 years old. On the Green today are twenty trees--ten elms, nine pin oaks, and a ginko. On the north side of the Green stand ten trees: seven elms, mostly young replacements, and three pin oaks. At the base of the Green are three pin oaks and one elm. On the south side of the Green are six trees: three pin oaks, two elms, and a small ginko. Some of the elms are primarily vertical, having lost their vase shape to pruning and damage.

(continued)

United States Department of the Interior
National Park ServiceNational Register of Historic Places
Continuation SheetFalmouth Village Green Historic District
Falmouth (Barnstable County)
MassachusettsSection number 7 Page 12

Today the Green is still a central gathering place for militia drills, parades, and the annual carol sing and Christmas display.

The Old Burying Ground (MHC #808, Map #54), at the intersection of Locust Street and Mill Road, is included as a discontiguous part of the Village Green Historic District because it was the center of the original town settlement. It is considered individually eligible for listing on the National Register of Historic Places. This was the site of the town's first two meetinghouses and its first cemetery, as well as the training ground for the militia. The town owned the large tract of land between the Old Burying Ground and the present Village Green until the 1750s, when the Green was developed and the land in between was sold in large tracts to a few descendants of the original proprietors.

The Old Burying Ground's 4 1/2 secluded acres border Sider's Pond and are defined by fieldstone walls. The rectangular cemetery contains approximately 775 stones, dating from 1705 to 1989. (After 1854, most burials were at the new Oak Grove Cemetery, located northwest of the village center.) It was the site of Falmouth's first two meetinghouses. The entrance to Cemetery Lane is marked by two curved granite walls. Photographs in 1900 show tall decorative iron gates at the entrance that are no longer present. From this point, the tree-shaded dirt road known as Cemetery Lane extends to a picket fence gate that opens to the burial ground. Continuing easterly to Sider's Pond, this road has historically provided public access to the freshwater pond. The road is separated from the burial ground by large maple and sycamore trees that are more than 70 years old. A few fuschia azaleas, red cedars, and spruce, thuya, and white pines grow among the cemetery stones. There are open spaces in the cemetery, and there is a clear swath of grass running perpendicular from Cemetery Lane to the opposite stone wall.

Markers in the Old Burying Ground are marble, slate, granite, sandstone and fieldstone. Most date to the first half of the nineteenth century, but many are 18th century slates. The oldest stones are located near the road about fifty yards from the pond. Exposure to natural elements has made some stones almost illegible. There is an assortment of skulls, angels, portraits, and sunbursts on the slates and sandstones and urn/weeping willow designs on the marbles as well as some slates. Some of the slates have been encased in rectangles of cement. There are a number of rectangular stones with crosses but no names, which have been variously described as markers for paupers or persons drowned in Vineyard Sound.

Other Open Space in the District

The Historical Society property on the west side of the Wood House at 55 Palmer Avenue (MHC #21) includes a formal colonial-style garden that dates to 1947. A square gazebo at the north end of the garden leads into a wooded memorial garden that has been developed on the remaining part of the two-acre site. Three privately owned landscaped gardens add to the Village Green District streetscape. The garden at Mostly Hall (MHC #684) probably dates to the early years of the house's existence. It

(continued)

United States Department of the Interior
National Park ServiceNational Register of Historic Places
Continuation SheetFalmouth Village Green Historic District
Falmouth (Barnstable County)
MassachusettsSection number 7 Page 13

is lined on one side with a tall rhodendron hedge. The vacant blacksmith's lot (Map #39) on Locust Street was landscaped in the 1970s to look like the sideyard of the William Nye Jr. House at 1 Locust Street (MHC #690). The landscaping shields a parking lot from the street. There is a formal garden to the side of the Moses Fish House at 15 Main Street (MHC #680). A huge copper bench in the sideyard at the Thatcher Lewis House at 105 Locust Street (MHC #59) is another landmark.

Vacant Lots/Current Conditions

One lot in the proposed National Register Historic District has been vacant for more than fifty years. An unpaved parking lot is located between two of the Queens Bough buildings (Map #34) on Palmer Avenue; there have been no efforts to landscape it.

There has been little new construction around the Green in the 20th century (excluding additions and renovations). The most significant intrusion may well have been the introduction of the car and the noise of cars passing by. The town does not allow parking around the Green and this has preserved its appearance. The heavy traffic flow on North Main and Locust Streets has been more intrusive, contributing to increased business use of residential properties on Locust Street. Speeding vehicles have knocked down the fence around the Inn at One Main Street (MHC #678) several times. Historical Society guides who conduct weekly tours from the Old Burying Ground to the Green are often unable to make themselves heard over the noise of truck traffic. Shrubs have replaced most of the picket fences that once lined the street. The most intrusive structure in the district is the L'il Peach convenience store (Map #47), which was built in 1969. A new house at 51 Main Street was designed to be in keeping with the rest of the district.

Archaeological Description

While no prehistoric sites are currently recorded in the district, it is possible that sites are present. Two sites are recorded in the general area (within one mile). The physical characteristics of the district are also favorable indicators for prehistoric site locations. The district is located on well drained, level to moderately sloping terrain in close proximity to both fresh and salt water ecosystems. Vineyard Sound and Falmouth Harbor are located less than a mile to the south, separated from the district by a low lying coastal plain containing Salt Pond, Siders Pond, and Shivericks Pond. Given the above information, the size of the district (38.1 acres), and the availability of open space within the district, a high probability exists for the recovery of significant prehistoric survivals.

There is also a high probability for significant historic archaeological remains within the district. Structural remains may be present dating from the town's first settlement in the 17th century through the 19th century. Most of the town's first settlement was located between Salt and Fresh (Siders) Ponds, south of the Old Burying Ground and the proposed district. Because of the close proximity of the first settlement area to the district, structural remains from this period may be present although

(continued)

**United States Department of the Interior
National Park Service****National Register of Historic Places
Continuation Sheet****Falmouth Village Green Historic District
Falmouth (Barnstable County)
Massachusetts**Section number 7 Page 14

they are currently undocumented. Structural remains from the town's first two meeting houses, however, may survive in the old burying ground lot, a discontinuous part of the district located south of the main district area. The first meeting house was built in the area ca. 1690. That meeting house was replaced in 1717 by a larger house, the frame from which was moved to the Village Green in 1756 and incorporated into the First Congregational Church. Structural remains from 18th- and 19th-century residences and/or farms are also possible within the district. At least six houses surrounded the Green at the time of the Revolution, with 12 houses clustering around the Green in 1820. Eight of these houses remain today, indicating potential structural survivals in the Green locale. Many of the houses that were demolished have been replaced; however, several were not replaced. Some of the more important houses no longer extant in the district where structural remains may survive include the 18th-century site of the town's first Post Office at the Queens Buyway parking lot on Palmer Avenue, an 18th-century Colonial Period house on Locust St. that was demolished and replaced by a convenience store in the 1960's, and an 1839 Greek Revival home on 29 Locust Street that burned in 1991. Structural remains may also survive from the Succanesset House Inn and Jenkins Whaling Supply Store, both of which were moved out of the district. Archaeological survivals may also exist from the original site of the Braddock Dimmick House, which was moved closer to the Grannis House in the 1880's, and the site of the Falmouth Coal and Oil Building, which was moved to its present location between 1856 and 1880. A ca. 1830 blacksmith shop was also present on a currently vacant lot on Locust Street. Structural remains from outbuildings are also probable within the district. Many 18th- and 19th-century residences in the district had related carriage sheds, barns, tool sheds, or shops. In at least one instance a barn associated with the 1810 Katherine Lee Bates House at 16 Main Street was moved off that lot and rebuilt into a residence, leaving potential archaeological survivals at its former location. Occupational related features (trash pits, privies, wells) also probably survive in the district, including extant structures as well as those no longer extant. Unmarked graves may also exist in the old burying ground area, where paupers and anonymous drowning victims are reportedly buried.

(end)

8. Statement of Significance

Applicable National Register Criteria

(Mark "x" in one or more boxes for the criteria qualifying the property for National Register listing.)

- A** Property is associated with events that have made a significant contribution to the broad patterns of our history.
- B** Property is associated with the lives of persons significant in our past.
- C** Property embodies the distinctive characteristics of a type, period, or method of construction or represents the work of a master, or possesses high artistic values, or represents a significant and distinguishable entity whose components lack individual distinction.
- D** Property has yielded, or is likely to yield, information important in prehistory or history.

Criteria Considerations

(Mark "x" in all the boxes that apply.)

Property is:

- A** owned by religious institution or used for religious purposes.
- B** removed from its original location.
- C** a birthplace or grave.
- D** a cemetery.
- E** a reconstructed building, object, or structure.
- F** a commemorative property.
- G** less than 50 years of age or achieved significance within the past 50 years.

Narrative Statement of Significance

(Explain the significance of the property on one or more continuation sheets.)

9. Major Bibliographical References

(Cite the books, articles, and other sources used in preparing this form on one or more continuation sheets.)

Previous documentation on file (NPS):

- preliminary determination of individual listing (36 CFR 67) has been requested
- previously listed in the National Register
- previously determined eligible by the National Register
- designated a National Historic Landmark
- recorded by Historic American Buildings Survey # _____
- recorded by Historic American Engineering Record # _____

Areas of Significance

(Enter categories from instructions)

- ARCHITECTURE
- COMMUNITY PLANNING & DEVELOPMENT
- EXPLORATION/SETTLEMENT
- LANDSCAPE ARCHITECTURE
- SOCIAL HISTORY

Period of Significance

ca. 1730-1945

Significant Dates

- 1746 (construction of 3rd meetinghouse)
- 1818 (arrival of Elijah Swift)
- 1872 (extension of railroad to Falmouth)

Significant Person

(Complete if Criterion B is marked above)

Cultural Affiliation

N/A

Architect/Builder

- Henry Vaughan
- Frederick Law Olmsted

Primary location of additional data:

- State Historic Preservation Office
- Other State agency
- Federal agency
- Local government
- University
- Other

Name of repository:
Massachusetts Historical Commission

10. Geographical Data

Acreage of Property 38.1 acres

UTM References

(Place additional UTM references on a continuation sheet)

1. Zone Easting Northing

3. Zone Easting Northing

2. Zone Easting Northing

4. Zone Easting Northing

X See continuation sheet

Verbal Boundary Description

(Describe the boundaries of the property on a continuation sheet.)

Boundary Justification

(Explain why the boundaries were selected on a continuation sheet.)

11. Form Prepared By

name/title Karen Allen and Ann Sears, Falmouth Certified Local Government, with Betsy Friedberg, NR Director, MHC

organization Massachusetts Historical Commission date February 1996

street & number 220 Morrissey Boulevard telephone (617) 727-8470

city or town Boston state MA zip code 02125

Additional Documentation

Submit the following items with the completed form:

Continuation Sheets

Maps

A **USGS map** (7.5 or 15 minute series) indicating the property's location.

A **sketch map** for historic districts and properties having large acreage or numerous resources.

Photographs

Representative **black and white photographs** of the property.

Additional items (Check with the SHPO or FPO for any additional items)

Property Owner

(Complete this item at the request of the SHPO or FPO.)

name Multiple Owners

street & number _____ telephone _____

city or town _____ state _____ zip code _____

Paperwork Reduction Act Statement: This information is being collected for applications to the National Register of Historic Places to nominate properties for listing or determine eligibility for listing, to list properties, and to amend existing listings. Response to this request is required to obtain a benefit in accordance with the National Historic Preservation Act, as amended (16 U.S.C. 470 et seq.).

Estimated Burden Statement: Public reporting burden for this form is estimated to average 18.1 hours per response including the time for reviewing instructions, gathering and maintaining data, and completing and reviewing the form. Direct comments regarding this burden estimate or any aspect of this form to the Chief, Administrative Services Division, National Park Service, P.O. Box 37127, Washington, DC 20013-7127; and the Office of Management and Budget, Paperwork Reductions Project (1024-0018), Washington, DC 20503.

United States Department of the Interior
National Park ServiceNational Register of Historic Places
Continuation SheetFalmouth Village Green Historic District
Falmouth (Barnstable County)
MassachusettsSection number 8 Page 1**8. STATEMENT OF SIGNIFICANCE**

The Falmouth Village Green National Register Historic District contains a well-preserved assemblage of late 18th and 19th century residences and institutional buildings associated with its development as the historic center of Falmouth. The wood frame buildings surrounding the Green represent the early development and evolution of a small and isolated colonial seafaring town on the southwest coast of Cape Cod whose people were involved in the historic events of their day. The district is significant to the maritime history of Massachusetts and the United States because of the town's long involvement with Charleston, South Carolina, its active participation in the Revolution, the War of 1812, the whaling and live oaking industries. It is significant locally and in Barnstable County and in Massachusetts for a particularly attractive village green which developed from town common land. The district retains integrity of location, design, setting, materials, workmanship, feeling, and association and fulfils National Register Criteria A and C on the local level.

Historical Development SummaryFirst Settlement and Incorporation: ca. 1650-ca. 1750

Incorporated as the settlement of Suckanesset in 1686, Falmouth was the first town to develop on the south side of the Cape. The first permanent European settlement of Falmouth began ca. 1660. Many of the earliest arrivals came to Falmouth by a circuitous route that proceeded from the English county of Kent to Scituate and Saugus, and thence to Plymouth, Sandwich, and Barnstable. The early name of the settlement, Saconesset or Suckanesset, came from the Native American word meaning "place where black wampum is found."

In November 1661, thirteen settlers recorded "an agreement for laying out the lands at Suckanesset." This initial settlement area was in present Falmouth Village, between Salt Pond on the west and Fresh Pond (now Sider's Pond) on the east. The agreement recognized that two men, Isaac Robinson and Jonathan Hatch, had already built houses by granting them the land on which their dwellings stood. The original land grants included lots of approximately 20 acres as well as common land for the grazing of sheep and cattle. The Old Burying Ground was laid out just to the north of Sider's Pond in 1677.

Falmouth was formally set off from the mother town of Barnstable on June 4, 1686, when the General Court of Plymouth County granted a Charter of Incorporation. At that time, the area was still known by the Native American name of "Saconesset." The population was probably limited to about 25 families or approximately 100 persons, with most concentrated in the original settlement at Falmouth Village. The name "Falmouth" appears to have been adopted gradually, first appearing in documents in 1694. The name was selected because Falmouth, England, was the home port of Bartholomew Gosnold, the first English explorer to visit the area in 1602.

(continued)

**United States Department of the Interior
National Park Service****National Register of Historic Places
Continuation Sheet****Falmouth Village Green Historic District
Falmouth (Barnstable County)
Massachusetts**Section number 8 Page 2

In its first century, Falmouth was primarily an agricultural community. Due to its geographical isolation from the rest of Cape Cod, where settlement had concentrated on the northern side along Cape Cod Bay, and due as well to the poor condition of colonial roads, Falmouth's main mode of travel and trade beyond its borders was by sea out of Vineyard Sound and Buzzards Bay. The agricultural economic base was probably supplemented by the area's rich fish and shellfish resources, available along the extensive coastline. Main Street was laid out in 1687 as part of the County Road connecting Falmouth with its parent town of Barnstable. Locust Street and Palmer Avenue were also laid out during the last half of the 17th century.

The first meetinghouse was built ca. 1690 on a four-acre site near the 1677 Burying Ground. The building was "less than thirty feet square," and served as an "assembly hall, fort, storm shelter and possibly a school." It is speculated that it was a wood-frame structure enclosed by a hip roof, with entries on three sides and a raised podium against the fourth wall. This building was replaced by a larger structure on the same site in 1715. Built at a cost of 168 pounds raised through the sale of pews, the new meetinghouse was "thirty feet square and eighteen feet high with as flat a roof as possible." Upper galleries were added to three sides in 1737. After years of debate, in 1756, the townspeople moved the meetinghouse about a quarter of a mile north to the then more central location of the present-day Village Green. The third meetinghouse was constructed on the Training Field of 1748 (now the Village Green). The new meetinghouse was forty-two feet square with entrances on three sides, a raised pulpit on the north wall, and galleries above the three entries. It was enclosed by a steep-pitched gable roof.

From Colonial to Federal Era: 1750-1814

After the meetinghouse was moved to the Green, development of the new village center proceeded as farmland was broken into smaller lots for tradesmen and sea captains. At least seven houses were built during this period around the Green or along the Locust Street approach to the Green. Most of the buildings were two-story, three-quarter houses, sided in weathered shingles.

Following the Revolution, a variety of maritime industries led Falmouth into a period of great growth and prosperity, surpassed only by the developments of the modern era. Major population increases, expansion of the village center as well as several other village settlements throughout the town, diversification of the economy, transportation improvements, and development of new social, educational, and religious opportunities, all combined to produce a more mature and heterogeneous society.

In 1796, a bell was purchased from Paul Revere (1735-1818) by Timothy Crocker for the First Congregational Church of Falmouth. Crocker was father-in-law of Falmouth's minister, the Reverend Henry Lincoln. The bell weighs 807 pounds and cost 42 cents per pound, a total of \$338.94. The bell, the 15th cast by Revere, is one of only 37 remaining that were cast in Revere's lifetime. (The First Congregational Church also owns three Simon Willard Clocks. The first two came into its

(continued)

United States Department of the Interior
National Park ServiceNational Register of Historic Places
Continuation SheetFalmouth Village Green Historic District
Falmouth (Barnstable County)
MassachusettsSection number 8 Page 3

possession during the 1840-1844 remodelling of the 1796 meetinghouse. One, a gallery clock, may have been given to the Church by Elijah Swift. The other, a three-faced turret clock, occupies the belfry.)

During the revolutionary era, the training ground was used by the local militia. By the end of the century, the Green began to be further defined as a desirable residential area. Several inns were established in the district by 1800, and residences along the Green began to house some of Falmouth's most prominent citizens--its doctors, ministers, business leaders, as well as whaling captains and ship owners. By the 1790s, four houses were constructed on the north and west sides of the Green that would symbolize its improved status. These houses were larger and more stylishly symmetrical than those built before the Revolution, reflecting the prosperity of the townspeople from trade with Charleston, South Carolina, and the West Indies. By 1800, Falmouth had a population of 1,882 and 268 houses. In 1802, sixty boats were registered, averaging 55 tons each. A total of 54 were coasters, with 30 carrying lumber to the southern states and the West Indies. The town's southern connection was only temporarily broken by the War of 1812.

The Green was again used as a training ground from 1806, when the Falmouth Artillery Co. was formed, through to 1815. Although much of New England opposed the War of 1812 and many parts of the Cape remained neutral, Falmouth was an active participant. Led by Capt. Weston Jenkins and Lt. William Nye, the artillery company fought to recapture ships taken by the British in the Sound. In 1813 Nye and his men were listed as serving on John Crocker's ship *Harmony*, which had been issued a letter of marque to operate as a privateer by the U.S. government. On Jan. 28, 1814, the town was bombed by the British frigate *Nimrod*, which was demanding the artillery's two guns. There was damage to property, but since the British had given civilians time to leave, no lives were lost.

Consolidation and Prosperity: 1818-1860

With the move of Elijah Swift to the Village Green area in 1818, the Green became the economic center of Falmouth. Swift had been involved in saltmaking and shipbuilding in Falmouth and trade and housebuilding in Charleston--by the early decades of the 19th century, Swift's 10,000 feet of saltworks represented the largest holding in town and made his among the largest such works in the state. With the end of the War of 1812, Swift was responsible for restoring Falmouth's southern connections; he obtained U.S. Navy contracts, beginning in 1816, for harvesting live oak timber from southern swamps for the construction of Navy vessels. Swift also established Falmouth's whaling industry in 1820 with the first of nine ships based in Woods Hole. Many Falmouth men were employed in his arduous live-oaking endeavors, and 250 local residents were involved in whaling.

The growing wealth of the community was revealed in the establishment on the Village Green of the Falmouth National Bank (MHC #688), founded by Elijah Swift in 1821. The town's increasing sophistication was reflected in the creation of a local newspaper two years later. One room of the bank was the reading room where the town's foremost citizens met in the evenings to read newspapers

(continued)

United States Department of the Interior
National Park ServiceNational Register of Historic Places
Continuation SheetFalmouth Village Green Historic District
Falmouth (Barnstable County)
MassachusettsSection number 8 Page 4

and journals and discuss business. In the early 1820s, Swift's son-in-law John Jenkins opened a whaling supply store next to his home at 20 Hewins Street (MHC #17). Jenkins' shop would outfit most of the town's young men for the next 50 years (it has since been moved out of the district).

Shipping formed the heart of Falmouth's maritime economy during this period. Falmouth ships went south in the early fall, carrying lumber along with several hundred young carpenters and mechanics who found employment in the Carolinas and Georgia in the winter months. In the meantime, the ships gathered cargoes of cotton, molasses, rice, and sugar, returning to Falmouth in the spring in time for the fishing and growing season. As late as 1832, housewrights and shoemakers were reported spending eight months of every year in the south. Falmouth was the only town in Barnstable County to maintain this southern connection well into the mid 19th century. Several houses in the district--including Mostly Hall (MHC #684) and the Thomas Swift House (MHC #687)--reflect the southern influence in their appearance.

By 1820, twelve houses were clustered near the church on the Green. Eight of those remain. The Village Green was improved with the addition of a fence and trees in 1832, with donations from Elijah Swift. In that year, Swift won town permission to plant elms around the perimeter at his own expense and to fence it in. His sons Oliver C. and George W. bought houses around the Green (at 54 and 57 Main Street). And over the next thirty years, Elijah himself and his sons-in-law John Jenkins and Erasmus Gould built three new houses in the area, at 71 Main Street, 20 Hewins St., and 78 Main Street, respectively. Swift descendants continued to occupy several houses around the Green until the early 20th century.

The Green reached full development during the mid 19th century and became primarily residential in character. It lost its position as the government center in 1840 when Falmouth built a Town House further east on Main Street, permanently removing government functions from the First Congregational Church. In 1856, the church itself was moved to the side, and the Green took on its present open form.

By the 1850s, 121 buildings stood in Falmouth Center. Of these, 99 were houses, six with shops attached. Fourteen were used for commercial purposes, including two groceries, several leather and harness shops, a whaling supply shop, a hotel, a bank, and two smiths. But while some houses in the district had commercial associations, all such activity had been eliminated by mid century as commercial enterprises concentrated more at the east end of Main Street (and outside the nominated district). The Green remained an institutional center and location of a number of imposing residences.

From Maritime Economy to Summer Resort: The Beginnings of Change, 1860-1880

At mid century, Falmouth appeared to be a stable collection of small, distinct villages whose robust economies were based on the maritime industries of shipping, whaling, fishing, and saltmaking. But change was about to occur. Substantial numbers of citizens were travelling to other parts of the world,

(continued)

United States Department of the Interior
National Park ServiceNational Register of Historic Places
Continuation SheetFalmouth Village Green Historic District
Falmouth (Barnstable County)
MassachusettsSection number 8 Page 5

learning new industrial and commercial skills, and bringing them back to Falmouth. Those who remained at home were not unaware of the modern world, and many were investing heavily in stocks, especially railroad stock, and in off-Cape banks. Elijah Swift epitomized the bold, prosperous, and progressive Falmouth citizen of the mid 19th century.

Elijah Swift died in the 1850s after having transferred much of his whaling fleet to New Bedford. Shipbuilding changes made live oak no longer important to the U.S. Navy, and Swift's saltmaking industry was also on its last legs with the discovery of salt mines in New York.

By 1870, the economy of the town had seriously foundered. Its maritime base had been weakened by the shift from sea to rail for the transport of goods, and by the devaluation of whale products. At the same time, saltmaking had been completely wiped out by rising production costs and lowering of duty on imported salt. Construction in the district slowed through the early 1870s as Falmouth looked for a new economic base. The town's last saltworks were sold in 1870 to the developers of Falmouth Heights, located east of the district, which would become the town's first summer resort. Agricultural enterprises outside the center were sold for development during the same period.

The extension of the railroad to Falmouth in 1872 opened the town to a new land boom as a summer resort. In the 1870s, wealthy Boston textile manufacturers and merchants began summering in Falmouth, staying first in the colonial houses on the Green before building estates on the outskirts and along the shore. Summer residents provided seasonal employment to the community, and some large estate owners began reforesting the town. This same period also saw the establishment of nationally renowned marine/scientific institutions at Woods Hole and the growth of a substantial Portuguese community which successfully pursued vegetable, cranberry and strawberry growing in East Falmouth.

Summer Resort Development: 1880-1930

At first, only the very wealthy could afford to build summer homes in the Falmouth area. But by the 1880s and 1890s, large developments outside the center, and the addition of summer amenities within the center, were attracting an increasing number of seasonal visitors.

From 1880 to 1910, the Green began to reflect the presence of summer residents who had been turning Falmouth into a summer resort since the extension of the railroad in 1872. In 1890 Elijah Swift's former home, by then the Succanessett Inn, was moved to Cahoon Court to make room for St. Barnabas Episcopal Church (MHC #689), whose construction was financed by summer resident E. Pierson Beebe. (Swift's former house would become, in its new location, a home for Beebe's chauffeurs.) The addition of the dark granite St. Barnabas Church in 1890 to the white wooden buildings around the Green further signaled Falmouth's new era. Beebe brought English-born Boston architect Henry Vaughan and Boston landscape architect Frederick Law Olmsted to Falmouth to build this Episcopal church as a memorial to his parents. The sandstone is said to have come from the quarry that was used for the edging of Trinity Church in Boston. Olmsted's siting allowed the church and adjacent parish house to be framed by trees and open space and used the lawn to connect to and

(continued)

**United States Department of the Interior
National Park Service**

**National Register of Historic Places
Continuation Sheet**

**Falmouth Village Green Historic District
Falmouth (Barnstable County)
Massachusetts**

Section number 8 Page 6

widen the Green at its narrowest point. St. Barnabas is one of only three churches known to have been sited and landscaped by Olmsted.

In this period, the Green also reflects Falmouth's growth as a small town with municipal services such as water and fire protection. In 1901 a decorative iron horse trough was installed at the tip of the Green by another summer resident, James Bleakie, who had installed the town's water system. (The trough was removed to the water department premises in 1930 and replaced by a smaller "wishing well" structure.) In 1906 an unused primary school was moved to North Main Street to be used as a hose house (MHC #744) by the new fire department. It was around this time that the old whaling supply store of John Jenkins was moved out of the district.

The 1890s saw the ends of Palmer Avenue and Main Street filled with Queen Anne and Shingle Style houses. Some were built by individuals who had grown up around the Green. The shift in the town's economic base to the sale of land for summer home construction can be seen in the 1 Main Street house (MHC #678) of E.E.C. Swift Sr., Elijah's grandson, who operated the most extensive real estate business in town. Other Palmer Avenue houses were built for individuals who had grown up on Quissett farms that had been sold to summer residents.

The extension of the railroad to Falmouth and Woods Hole shifted trading activities from the former town dock at Shore Street to the train depot west of Palmer and Locust Streets and signaled the end of shipping as an important factor in Falmouth. A livery stable opened at 21 North Main Street (MHC #739) opposite Depot Avenue in the 1880s to convey passengers to their final destinations. In 1908 the Wood Lumber Co. (MHC #693) was moved from Shore to Locust Street, also near the railroad.

The development of the Queens Buyway shopping center (MHC #741) in 1926 on both sides of Palmer Avenue is the last major undertaking in the Village Green District. This Colonial Revival strip of small, connected, one-story stores was designed as an attraction for summer residents that would also serve as an entrance to the Village Green.

Historical and/or architectural significance of individual structures

The present First Congregational Church of Falmouth (MHC #19), the third meetinghouse demonstrates in its history the pattern of development for Falmouth Center and the Village Green. The earliest church and town records state that at least 5 1/2 acres were set aside for a burial ground, training field, and meetinghouse lot. On June 6, 1687, the townspeople set aside forty acres of upland and provided a house for the minister. The Village Green is believed to be a part of the lands set aside. The first meetinghouse was built ca. 1690 within the walls of the Old Burying Ground off Mill Road. In 1708, nineteen persons withdrew from the Old Barnstable Church to incorporate the Falmouth Church under the leadership of the Rev. Joseph Metcalf. Disagreement over the size of the house and the type of pews kept the townspeople from building a new meetinghouse until 1715, when

(continued)

United States Department of the Interior
National Park ServiceNational Register of Historic Places
Continuation SheetFalmouth Village Green Historic District
Falmouth (Barnstable County)
MassachusettsSection number 8 Page 7

they agreed on a thirty-foot-square house on the same lot. The walls were finished on the outside only. Later, money from the sale of pew spots was used to finish the inside. No physical evidence has been found of these first two meetinghouses. Church records state that each time a new meetinghouse was built, materials from the previous one were used.

As the town grew, a more centrally located training ground for the militia and the site of a larger meetinghouse were sought. As part of the Town's land, called "the meeting house lot," the present Green (MHC #920) was laid out in 1749 as a 1 1/2-acre training ground and site of the 1756, 42-foot-square meetinghouse. According to town records, this lot was originally five acres, but the town sold all but 1 1/2 acres in 1747.

By 1791, with the 1756 meetinghouse in disrepair, a new meetinghouse was built that once again used the materials from the previous house and is the skeleton of the present First Congregational Church. Finished in 1796, this meetinghouse, because of separation of church and state under the new Constitution, was a church rented by the town for meetings. It was for the belfry of this Church that Paul Revere cast his fifteenth bell. The frame of this meetinghouse was removed from the Green in 1858 to its present site on the Green's north side, at which time, it was altered with the application of Italianate trim and pointed-arch window openings.

The Conant House (MHC #487) may be the house referred to in early Falmouth Congregational Church records as the house built for the Reverend Mr. Josiah Marshall in 1724, and then purchased for \$545 by the town in 1730 for the next minister, the Reverend Mr. Samuel Palmer, for whom Palmer Avenue is named. Church records in 1751 state that the Church met at the minister's home while the 1756 meetinghouse was under construction. The house was owned privately in the 1820s by carpenter Davis Hatch, and around the end of the 19th century, it served briefly as the first of several Elm Arch Inns. In 1966, the Falmouth Historical Society bought the house from the Conant family and opened it in 1968 as a museum displaying early Falmouth artifacts from farming, cranberry growing, saltmaking, glassmaking, shipbuilding, whaling, blacksmithing, needlework. It also houses military memorabilia and a Katharine Lee Bates exhibit.

Seven extant houses were built in the years just after the meetinghouse was moved to the Green. Three formed the south side of the meetinghouse lot--the Consider Hatch, Benjamin Sanford, and John Hatch houses (MHC #s 685, 686, and 700, respectively). Two others no longer existing formed the northern side of the triangle with the Conant house. Construction of the Grannis house (MHC #16) gave the Green its base in 1765. Two houses stood on Locust Street, the Ebenezer Nye and Zimri Tobey houses (MHC #s 55 and 54). All the pre-Revolution houses were sided in wood shingles. All but one were 2 to 2 1/2 stories high; one was a half-Cape. Three were initially four bays wide, called three-quarter houses. Two were five-bay colonials. Six had gable roofs; one had a hip roof.

(continued)

United States Department of the Interior
National Park ServiceNational Register of Historic Places
Continuation SheetFalmouth Village Green Historic District
Falmouth (Barnstable County)
MassachusettsSection number 8 Page 8

The Consider Hatch House of 1767 shows the greatest Georgian influence of the early houses. The house was built for Consider Hatch, a descendant of Jonathan Hatch, one of the founders of the town. He served as the town clerk for many years before moving west. His land ran down to the pond behind his house, which was named Sider's Pond. This house once fronted directly on the Green and was located close to the Sanford house. It was moved west and back from Main Street fifty years ago. A subdivision road now separates the house from its former site. The house has been divided into condominiums.

The Benjamin Sanford House (MHC #686), built between 1755 and 1775, probably began as a three-quarter house, as evidenced by its off-center chimney. It was enlarged to a five-bay house after the Revolution. A shop was located in the house or next to it in the late 18th century; here, Sanford is known to have made beaver hats. He was a soldier of the Revolution, customs officer in Falmouth, and cabinetmaker, postmaster, and undertaker. The house is now the Swan Point Inn.

Capt. John Hatch (MHC #700) was another member of the Hatch family who was an early resident of the Green. In 1871 this three-quarter house was sold to Robinson Crocker Bodfish, a staunch Congregationalist, who died a pauper rather than sell the house to the new Episcopalian congregation of St. Barnabas Church next door. In 1901 the bank took over the house and sold it for \$6,500 to E. Pierson Beebe, the founder of the church. Beebe spent more than \$12,000 to restore it to its original condition for use as the church rectory. The house was renovated in the 1950s and again in 1993. Unlike the Sanford House, the Capt. Hatch House has never been enlarged to five bays.

Capt. John Grannis built his house on Hewins Street ca. 1765 (MHC #16). During the Revolution, Capt. Grannis commanded the expedition to protect the livestock on the Elizabeth Islands from the British Fleet. A later owner was Thomas Lewis, who was town clerk and treasurer for 28 years.

Ebenezer Nye's house at 49 Locust Street (MHC #55) was built at the time of his 1767 marriage. Nye had a prosperous career, and at his death in 1799, owned three coastal schooners, a blacksmith shop, and a store. He served on town committees to raise soldiers and to run British blockades to buy grain for the town during the Revolution. Nye was commissioned as a privateer in 1779 by the Commonwealth of Massachusetts to cruise Vineyard Sound between Falmouth and Nantucket.

Falmouth residents met with prosperity for the first time in the years following the Revolution, and this is reflected in their houses. Although most were still sided with wood shingles, the new houses were five-bay, symmetrical structures with decorative sidelights and porticos at the entrances. Several of these houses have twin interior chimneys, four have hip roofs, two have widow's walks. The most elaborate is the five-bay Dr. Francis Wicks House (MHC #21) of 1790, with its two-level portico similar to the Jeffersonian Classical porticos found in South Carolina. It was the first of several homes built in town with two-tiered porticos. Francis Wicks, a medical corpsman stationed in Chelsea during the Revolution, built the Falmouth house and lived there for five years. He was Falmouth's

(continued)

United States Department of the Interior
National Park ServiceNational Register of Historic Places
Continuation SheetFalmouth Village Green Historic District
Falmouth (Barnstable County)
MassachusettsSection number 8 Page 9

doctor and an early advocate of inoculation for smallpox. His wife came from Martha's Vineyard. The Falmouth Historical Society acquired the house in 1932.

The five-bay Braddock Dimmick House (MHC #15) with twin interior chimneys was built on Hewins Street in 1804. Photos from 1850 show a portico at the entrance similar to other houses on the Green. Dimmick was a church deacon, a selectman and clerk, state senator and representative. The house and its barn were given a Queen Anne update by John H. Crocker, the "cranberry king" from East Falmouth, who moved onto the Green in 1894. The update includes several two-story bays, a long one-story front porch and a turretlike dormer on the third floor. Dr. Edwin Tripp and his son Dr. Edwin Tripp Jr. owned the house for 60 years. Owners Donald and Linda Long presently run the Village Green Inn here.

Housing construction in the Village Green area continued even as the town's economy began to suffer from the embargoes and blockades leading up to the War of 1812. The square, five-bay Capt. Bodfish House (MHC #20), next to the Wicks house, was built 24 years later in 1814 using the same hip-roofed form as its neighbor but with a simpler one-story portico reflecting the more refined Federal style. Its construction involved a reduction in the Green from 1 1/2 acres to a single acre. Capt. Bodfish was said to be the youngest man to attain full rank as a master of a large vessel on the Cape. In 1826, Elijah Swift bought the house for his son Oliver, a successful businessman. In 1953 it became the manse for the First Congregational Church.

The Katherine Lee Bates House (MHC #681) was built in 1810 by Mayhew Hatch, another descendant of Jonathan Hatch, one of the founders of Falmouth. The house was later owned by Benjamin Franklin Jones, a successful whaling captain and then by his son George Washington Jones, Falmouth's postmaster from 1889 to 1927. It is named for its best-known resident, Katharine Lee Bates, author of *America the Beautiful*, who was born in the house in 1859. Her father was minister of the First Congregational Church in 1858. He died the following year, but Katharine and her family remained in the house for a few years boarding interim ministers to augment the income provided by the church. The house is now owned by the Falmouth Historical Society, which opened it as a museum in the 1980s to honor Miss Bates. It is no longer open to the public. A barn in back of the house was converted to a house in 1917.

Several carpenters built their homes on Locust Street during this period. In 1795, housewright Warren Gifford (51) built a four-bay, weathered shingle house at 96 Locust Street. Gifford died in the Carolinas in 1814 and the family lost ownership when the mortgage was called. In 1817 the house was purchased by Capt. Silas J. Bourne. It has since been the home of a painter, a shoemaker, and a harnessmaker. Around the turn of the century, the house was converted to a two-family residence; it was returned to single-family status in the 1930s when the central chimney was rebuilt. Across the street another housewright, Thatcher Lewis, built a two-story house (MHC #59) around 1800. It appears to have been a five-bay structure, but the dimensions have been disguised by the horizontal Shingle Style alterations of 1881. These alterations were done by architect Frank Hill Smith for

(continued)

United States Department of the Interior
National Park ServiceNational Register of Historic Places
Continuation SheetFalmouth Village Green Historic District
Falmouth (Barnstable County)
MassachusettsSection number 8 Page 10

summer resident Joseph Story Fay, who bought the property for his relatives. In 1802, housewright William Nye Sr. (MHC #50) built a two-story, shingle-sheathed half house on Locust Street. Nye was lieutenant in the Falmouth Artillery Company during the War of 1812 and listed as lieutenant on the privateer *Harmony*, which operated under a letter of marque from the United States. He was a selectman for 21 years and later a town clerk.

After the War of 1812, clapboard was used more frequently. Housing construction continued along federal lines, with some cautious experiments with the Greek Revival. The five-bay John Jenkins House (MHC #17) of 1822 shows some elements of the Greek Revival style in the centered pediment with a wooden fan ornament rising from the roofline. Its cornice extends around the house making pediments with wooden fans on the gable ends and in the pediment of the two-story ell. The house has interior chimneys and is sided in clapboard. A portico with Doric columns, hip roof and balustrade marks the entrance. The balusters are similar to those used on the Moses Fish House (MHC #680) a year later. Next door to his residence, Jenkins ran a whaling supply shop in a one-story gable-front building.

The Capt. Moses Fish House (MHC #680) of 1823 is the first building in the district to present its gable end to the street in the Greek temple-front manner. The house was built by Davis Hatch, who lived in the Conant house (MHC #487). It was added to the gable side of a ca. 1750 two-story house that may have been moved back from the street; the earlier building now appears as the Fish House ell. Although in the district, this gable-front house does not front on the Green.

It would not be until 1844 that a house in the Greek Revival style was built directly on the Green. In that year, Elijah Swift built for his son Thomas the large, three-story clapboard house at 71 Main Street (MHC #687), sited with its four-bay gable end facing the street. But aside from the large corner pilasters on the main building and the Doric columns on the one-story side wings, there is little Greek Revival detailing. The entrance is on the side, facing what was then Elijah's house, suggesting the builder may have been more influenced by Charleston, South Carolina, house siting practices than the temple-front orientation of the Greek Revival.

In 1830 William Nye Jr. (MHC #690) built a five-bay house with twin interior chimneys on Locust Street that is more Federal in appearance than Greek Revival, except for the two fluted columns that hold up the hip-roofed entry portico. Nye followed in the footsteps of his father, who lived next door, and became a carpenter, a town clerk, and state representative.

Around 1830, Thomas Lawrence Sr. (MHC #58), who had wintered in South Carolina building houses since 1800, built a five-bay house with a two-story portico on Locust Street. Lawrence apparently wanted to build a southern-style house, and his is, like many of its southern counterparts, tall, high-ceilinged, and with a one-room-deep plan. Five of Lawrence's sons became ship captains, primarily in the whaling industry. After his death the house passed to son Samuel and his wife Mary Chipman Lawrence. Her diary of a whaling voyage with her husband and child has been published as The

(continued)

United States Department of the Interior
National Park ServiceNational Register of Historic Places
Continuation SheetFalmouth Village Green Historic District
Falmouth (Barnstable County)
MassachusettsSection number 8 Page 11Captain's Best Mate.

The Italianate house of Erasmus Gould (MHC #18) on Main Street, built in 1852, is the first gable-front house oriented toward the Green. Gould, a son-in-law of Elijah Swift, was a merchant and president of the Falmouth National Bank from 1874 to 1881. He bought the property in 1844 and took the unusual step of razing the existing house in order to build a new one. After his death, the house was sold to Dr. Alexander T. Walker, a successful businessman for whom Walker Street was named. Later, Annie Fraser Davis moved the Elm Arch Inn over from the Conant house to the Gould House, where it remained until 1911. The building now houses medical offices.

Mostly Hall (MHC #684) is considered Falmouth's first summer house. It was built as a summer residence by Falmouth native Albert Nye (son of William Sr.) for his Louisiana bride. It is a square, hip-roofed, three-bay, clapboard house surrounded by a raised verandah. The house has been described as belonging to the Italianate style, but the verandah is more suggestive of the French influence in Louisiana. In 1872, the house was acquired by retired whaling captain John R. Lawrence. His family named it Mostly Hall because of the thirty-foot halls upstairs and down and the wide verandah. The house had its own gas plant for heat and light. The garden at Mostly Hall is lined on one side with a tall rhododendron hedge. It is said that when Albert Nye and his bride arrived from New Orleans, they left the well-manicured grounds brightly illuminated by gaslight every night so that they could view it from the house's verandah. Capt. Lawrence's son Henry V. Lawrence, a highly regarded nurseryman, lived in the house from 1872 until 1953; he was the founder of the H.V. Lawrence greenhouses, which were known across the Cape, and he maintained Mostly Hall's tradition of embellishing the already lovely grounds. The house is now a bed and breakfast inn. The former caretaker's cottage across the street (MHC #683) is now under separate ownership.

Two Italianate-style houses were built on Locust Street. In 1861, whaling captain Thomas Lawrence (MHC #56) built a two-story, hip-roofed house with cupola at 75 Locust Street. At age forty, he retired to it with his family, on their return from a long whaling voyage--just ahead of Confederate gunboats, he recalled. Lawrence served as postmaster and opened a store on Main Street. In the 1880s, he was one of the many retired sea captains active in town affairs. His house is a notable example of the Italianate style; the wide overhanging eaves of the roof are joined to the house by decorative brackets with pendants, and a square wing with its own hip roof projects from the front of the house.

In 1872, Thomas Lawrence's brother, Capt. Lewis Lawrence (MHC #691) also retired from whaling and built a gable-front-and-wing house further down the street, at 37 Locust Street. It, too, is Italianate in style, featuring eave-line bracketing and pairs of tall narrow windows in a projecting bay. It is sheathed in wide-board siding. The houses of both Lawrence brothers are set back from the street. In 1873, their sister Celia Bourne (MHC #51) built the simple gable-front house with porch at 18 Locust Street.

(continued)

United States Department of the Interior
National Park ServiceNational Register of Historic Places
Continuation SheetFalmouth Village Green Historic District
Falmouth (Barnstable County)
MassachusettsSection number 8 Page 12

The last decades of the 19th century were a period of considerable building activity in the district. The first of the Victorian Queen Anne houses in the district was built in 1888 for Charles Delano (MHC #682). It is located at 19 Main Street. It is a 2 1/2-story house with two gables on the facade. The smaller of the two gables was added in the 20th century. The first floor porch is recessed below the second level, and a mix of scalloped shingles and clapboard further enliven the facade.

In 1892, E.E.C. Swift Sr. built a 2 1/2-story Queen Anne-style house (MHC #678) with a two-story tower on the east side at the corner of Main and Locust Streets. There is presently a large picture window at the front of the house, but most of the remaining windows have large central panes surrounded by small panes of glass over a single pane. The house is sided in shingles with two wide rows of scalloped shingles running around the building. It is now a bed and breakfast inn. The house is one of three prominently sited at the Main and Locust Streets intersection; the other two houses are the five-bay William Nye House at 1 Locust Street (MHC #690, discussed above) and the exuberantly Victorian Kate Watson House (MHC #679, Photo #11, Map #2). Kate Watson grew up in the federal-period Katherine Lee Bates House next door. Her house stands on the site of the ca. 1800 Shubael Hatch Inn, which was demolished in the 1860s after standing vacant many years. At 80 Locust Street, another Queen Anne-style house was built in 1893, this one by retired whaling captain Freeman Lewis (MHC #692). Its site was previously occupied by a 1777 house. This 2 1/2-story building is noted for its main facade's two-story bay with conical roof.

Other Victorian houses were built on Palmer Avenue, with the gable-front, two-story William N. Davis House at 80 Palmer Avenue (MHC #743) being the first, in 1894. The shingled-sided house has a one-story porch with turned posts and gingerbread trim at the corners. Five years later, in 1899, Davis' cousin William C. Davis (MHC #23) built a three-story Shingle style house at 70 Palmer Avenue. The house features roofline brackets, dentil molding, double and triple windows and an eyebrow window on the third floor. William Cristy Davis was the founder of the W. C. Davis Company, which combined furniture selling and undertaking. His Main Street store was built in 1889. At 88 Palmer Avenue, George Washington Jones (MHC #742), the brother of Kate Watson, and Falmouth postmaster for thirty-eight years, built a Shingle Style house with a gambrel roof, two bay-window dormers, and a first floor porch. This house has an oriel window and a picture window on the first floor. Jones was also responsible for moving, in 1906, the one-story pyramidal-roofed schoolhouse (MHC #744) of 1890 from what is now Town Hall Square to its present location at 29 North Main Street. George Jones was Precinct Three's fire captain. The schoolhouse was sold back to the town and used as a hose house. In 1922, the town sold the hose house to Wilbur Dyer, who converted it to a residence. It is sided in weathered shingles, with decorative shingles above the window line. It has more recently been used as commercial space.

The houses at 73 and 81 Palmer Avenue are almost mirror images of one another. Each is a three-story Queen Anne with a corner tower and a front porch with short Doric columns. Number 81 (MHC #740) was built in 1901 for Quissett native Joseph C. Fish, who was seeking a more central location in town. Two windows have stained glass above. The porch runs the length of the house. It

(continued)

United States Department of the Interior
National Park ServiceNational Register of Historic Places
Continuation SheetFalmouth Village Green Historic District
Falmouth (Barnstable County)
MassachusettsSection number 8 Page 13

is now a bed and breakfast inn. Ten years later, after the house next door burned, number 73 (MHC #22) was moved to the site from East Falmouth by Rawson Jenkins, president of the Falmouth Cooperative Bank. This house, now clad in aluminum siding, has a picture window on the first floor with a strip of stained glass above. The porch stops short of the corner tower.

In 1890, after removing a house on the site, St. Barnabas Church was built on a design by Henry Vaughan. Frederick Law Olmsted sited and landscaped the church and its parish house, setting the two very English Gothic structures back and apart from the other buildings fronting the Green while letting an expanse of lawn establish the connection to the Green. Olmsted's siting allows the stone structures to be framed by their own trees and space and uses the lawn to connect to and widen the Green at its narrowest point. St. Barnabas Episcopal Church is one of three designed by Olmsted. He was at the peak of his career when E. Pierson Beebe of Beacon Street, Boston, and Falmouth asked him to site and landscape the church he was building on Cape Cod in memory of his parents. Olmsted was 67 years old when he was first contacted about the project in 1889. The siting of this English Gothic-style church on its two-acre lot was one of many small projects Olmsted sandwiched between his major work of the period on the Colombian Exposition in Chicago, the Boston park system, and the Biltmore estate in North Carolina. St. Barnabas is known to have had two plans by Olmsted. Only recently rediscovered, they were rescued from a church attic in about 1990. One of the plans is an early tinted draft on linen; the second is a blueprint of a planting plan dated April 11, 1891, and it shows the final situation of the church and its outbuildings. An addition topographical plan by Ernest Bowditch, Boston engineer, dated April 1889 was also found.

Several buildings in the district began life in other locations, but were moved into or within the district to serve new industrial or commercial functions at various times in the 19th and early 20th centuries. The Falmouth Coal Co. building (MHC #739) on North Main Street probably began as a two-story, four-bay structure around 1836, when it served as a paint shop and was located at Watson's Corner. The building was moved to its present site between 1856 and 1880. The two-story projecting Greek Revival gable front was probably added at the same time. In 1857, the second floor was used as the headquarters of the Masons. In 1891, the building was sold to T. Lawrence Swift, who ran a livery service. In 1919 it was acquired by Wilbur Dyer, who also ran a livery service, and in 1924, it became the headquarters of Dyer's Falmouth Coal Company. It is presently covered in aluminum siding.

The relocation of the Wood Lumber Co. (MHC #693) from Shore Street to Locust Street in 1908 (and thus from the former town dock at the end of Shore Street to the railroad), signaled the shift in shipping from water to land. James Cameron built the company's primary building, a long, one-story, shingle-sided building in 1908 and sold it in 1912 to James Miskell and Edmund Wood for the Green and Wood Company of New Bedford. Joseph Miskell, son of James, ran the business until 1946 when his son Joseph B. Miskell Jr. took over. It is now run by his son Dana Miskell. It was for many years the only lumberyard in town.

(continued)

United States Department of the Interior
National Park ServiceNational Register of Historic Places
Continuation SheetFalmouth Village Green Historic District
Falmouth (Barnstable County)
MassachusettsSection number 8 Page 14

E.E. C. Swift Sr.'s real estate office (MHC #701) of the 1850s is a small one-story, hip-roofed building that was moved from Depot Street to its present location at 108 Main Street in the 1920s to be used as Dr. G. H. Greene's office. It is a dentist's office today.

The development of the Queen's Buyway, an early shopping center, (MHC #741) in 1925 on both sides of Palmer Avenue was the last major undertaking in the Village Green District. This Colonial Revival structure, a row of small, one-story stores, was designed as an attraction for summer residents, and it serves as an entrance to the Village Green. The construction of Queen's Buyway brought about the first zoning bylaws for businesses in Falmouth. The south side was constructed in 1925 by a group of investors headed by Forris Wood Norris, who became the first president of the Cape Cod Board of Realtors in 1926. Because the town had no zoning laws at that time, Norris was free to build this commercial complex in close proximity to the residential Village Green. The town newspaper cited Queen's Buyway as good reason to adopt zoning laws because of concerns that the Buyway would encourage other commercial enterprises to move in around the Green and displace more houses. The two buildings on the north side of Palmer Avenue are known as the Parkway and were built in 1926, also by Norris. They are not as well constructed as the Buyway shops and lack many of the decorative architectural elements of the south-side stores, probably because their construction was rushed to completion before the town adopted its first zoning laws. The plans for the Parkway called for Cape Cod architecture with a garden, lighthouse, and windmill; the windmill and garden were never completed.

The first shop to open in Queens Buyway was the Hurwitch Bros. clothing store, which had Falmouth beginnings in 1907. In 1927 the Falmouth Board of Trade voted to keep the post office on Main Street from moving into the Buyway. Norris wanted this move to help bring trade into his stores and to help recoup some of his construction costs. By 1939, when Norris sold the Buyway to Dr. Tracy J. Putnam, it was doing well. Cape Cod's first Filene's Department Store had been opened in the west side and was the principal tenant.

Modern-Day Falmouth Green

Falmouth today is a major summer resort area, and the Village Green remains its centerpiece. Village parades, ceremonial occasions, and holiday communal gatherings all focus on the Green. Many houses on or near the Green have been converted to bed and breakfast inns. The Queen's Buyway and other buildings at the edge of the Green house antiques shops and upscale commercial ventures. The town's historical commission and historical society are both active bodies year-round. Walking tours increase visitor awareness and understanding of local history. A local historic district was established in 1975. A master planning effort with a significant preservation component is presently nearing completion. Falmouth has participated in the Certified Local Government program since 1994.

(continued)

**United States Department of the Interior
National Park Service****National Register of Historic Places
Continuation Sheet****Falmouth Village Green Historic District
Falmouth (Barnstable County)
Massachusetts**Section number 8 Page 15Archaeological Significance

Since patterns of prehistoric occupation in Falmouth and the Upper Cape in general are poorly understood, any surviving sites could be significant. In an area characterized by well-drained soils and marine-related ecosystems, sites densities are expected to be high in the Falmouth locale; however, known site densities indicate both Falmouth and the Upper Cape areas are underreported. Prehistoric sites in this area have the potential to correct reporting biases in this area as well as contribute valuable data relating to such topics as the effects of sea level rise on Native settlement and subsistence systems, and the relationship of Native American groups in the Falmouth area to those in the Elizabeth Islands, Martha's Vineyard, and Nantucket.

Historic archaeological remains described above have the potential to provide detailed social, cultural, and economic information that characterized the growth of a small Cape Cod maritime community from the 17th through the 19th centuries. Potential structural remains in the district can help reconstruct important residential, commercial, and institutional members of the district which no longer survive. These remains can provide information on construction technologies used and, when combined with a detailed analysis of occupational related features, can provide insights into the temporary and permanent inhabitants of the structures. Archaeological survivals at the Succanessett House Inn site can provide details on transient, probably maritime-related populations in the town. At the original site of the Jenkins Whaling Supply Store archaeological resources may survive, including refuse deposits which can provide information on technologies used on whaling vessels and in the care of crews. Archaeological resources at residential house sites can also provide information on commercial trades in the town. Some houses including the 1795 Warren Gifford house at 96 Locust Street, were occupied by craftsman, in this instance by a housewright, painter, shoemaker and harness maker. These trades may have been pursued at these residences, possibly as cottage-type industries, leaving potential survivals of these activities. Institutional related structures and features can also provide valuable insights into Falmouth's early growth. Archaeological survivals of the town's first two meeting houses can provide important information at the community level, possibly relating to political religious and socio-economic topics. Together, each of the above resources may provide important information on the growth of a primarily maritime community which developed in relative geographic isolation in the 17th, 18th, and 19th centuries. Analysis of these sources may also indicate possible relationship between the town's geographic isolation and the decline of maritime interest in the 19th century.

(end)

United States Department of the Interior
National Park Service

National Register of Historic Places
Continuation Sheet

Falmouth Village Green Historic District
Falmouth (Barnstable County)
Massachusetts

Section number 9 Page 1

9. MAJOR BIBLIOGRAPHICAL REFERENCES

Allen, Karen and Christopher, Reflections of Old First Church, 1987, Falmouth First Congregational Church

Assessors Records, Town of Falmouth, 1877-79

Deyo, Simeon L. The History of Barnstable Count, 1890

Falmouth Enterprise, 10/24/25

Geoffrey, Theodore, Succanessett, A History of Falmouth, Massachusetts, 1928, Falmouth Historical Society

Hamilton, Bonnie, Ann Sears, Housing Survey, Falmouth Historical Commission, 1991

Hewins, William, Falmouth in 1850, 1924 Falmouth Historical Society

Jenkins, Candace, Falmouth Village, 1850-1976, Boston University term paper in American Architecture, Jan. 1, 1977, Falmouth Historical Commission

Jenkins, Charles, Three Lectures on the Early History of Falmouth, 1889

Massachusetts Historical Commission Reconnaissance Survey Report, 1985

McAlester, Virginia and Lee, A Field Guide to American Houses, 1988, Alfred A. Knopf, New York.

Moses, George , Ring Around the Punch Bowl, Sullwold Publishing Co., Taunton, MA, 1976

Smith, Mary Lou, Ed. The Book of Falmouth, Falmouth Historical Commission, Falmouth MA, 1986

Spritsail, Mary Lou Smith, Ed, published by the Woods Hole Historical Collection Stickney, Edward and Evelyn, The Bells of Paul Revere, Bedford, MA 1976

Swift, Oliver F., Recollections of Oliver F. Swift, Falmouth Historical Society

(end)

United States Department of the Interior
National Park ServiceNational Register of Historic Places
Continuation SheetFalmouth Village Green Historic District
Falmouth (Barnstable County)
MassachusettsSection number 10 Page 1

10. Geographical Data

UTM Reference

	<u>Zone</u>	<u>Easting</u>	<u>Northing</u>
A	19	365050	4601350
B	19	364900	4601060
C	19	364800	4601040
D	19	364840	4601200
E	19	364600	4601180
F	19	364480	4601160
G	19	364340	4601180
H	19	364420	4601340
I	19	364480	4601360
J	19	364780	4601580
K	19	364780	4601580
AA	19	364580	4600720
BB	19	364520	4600660
CC	19	364460	4600740
DD	19	364320	4601020
EE	19	364400	4600880
FF	19	364460	4600840

United States Department of the Interior
National Park Service

**National Register of Historic Places
Continuation Sheet**

Falmouth Village Green Historic District
Falmouth (Barnstable County)
Massachusetts

Section number 10 Page 2

Verbal Boundary Description

The bounds of the Falmouth Village Green National Register Historic District are shown on the attached assessors maps.

Boundary Justification

The bounds of the Falmouth Village Green National Register Historic District were drawn to include the greatest concentration of historic, significant, and well preserved residential and institutional buildings associatal with the village's development from its earliest settlement into the 20th century. The primary focus of the district is the Town Green. The district boundaries coincide with those of the Falmouth Village Local Historic District (established 1975) with the exception that lots are included in their entirety in the National Register district (rather than being bisected by largely arbitrary lines) and that the Old Burying Ground, located off Mill Road and individually eligible for the National Register, is included as a discontiguous element. Areas of new construction bound the district to the north, south, and west, and the town's commercial area lies to the east.

(end)

**FALMOUTH VILLAGE GREEN
FALMOUTH, (BARNSTABLE COUNTY)
DISTRICT DATA SHEET**

MAP#	MHC#	HISTORIC NAME	ST. ADDRESS	DATE OF CONSTRUCTION	STYLE	STATUS	RESOURCE
1a	678	Inn at One Main	1 Main St.	1892	Queen Anne	C	B
b		stable/2 car garage		c1900		C	B
2a	679	Watson House	4 Main St.	1897	Queen Anne	C	B
b		2-car garage		c1990		NC	B
3a	680	Capt. Moses Fish House	15 Main St.	c1823	Greek Revival	C	B
b		garage				NC	B
4a	681	Katherine L. Bates House	16 Main St.	1810	Federal	C	B
b		2-door garage		1917		C	B
5	682	Charles Delano House	19 Main St.	1888	Queen Anne	C	B
6	N/A	Ben. F. Jones barn/hse	20 Main St.	c1880/1917		C	B
7a	683	Mostly Hall Caretaker	24 Main St.	1852	Cape, 1/2	C	B
b		Helen Swift playhouse		c1927/c1955	other: Cottage	NC	B
8a	684	Mostly Hall	27 Main St.	1849	Italianate	C	B
b		2/car gar		c1920		NC	B
c		granite & iron fence		1849		C	St
d		gazebo		1945		C	St
9a	685	Consider Hatch House	37 Main St.	c1767	Georgian	C	B
b		3-car garage		c1934		C	B
10	N/A	Ronald Stutzman House	51 Main St.	1994		NC	B
		Hatch Houselot					
11a	686	Benjamin Sanford	57 Main St.	1750-75	Colonial	C	B
b		3-car garage, stucco		c1920		C	B

**FALMOUTH VILLAGE GREEN
FALMOUTH, (BARNSTABLE COUNTY)
DISTRICT DATA SHEET**

MAP#	MHC#	HISTORIC NAME	ST. ADDRESS	DATE OF CONSTRUCTION	STYLE	STATUS	RESOURCE
12a	687	Thomas Swift House	71 Main St.	1844	Greek Revival	C	B
b		3-car garage		c1905		C	B
c		stable with cupola		c1890		C	B
d		Helen D. Nickerson plyhse		c1927		C	B
13a	689	St. Barnabas Church	91 Main St.	1890	Gothic Revival	C	B
b		St. Barnabas Parish House	77 Main St.	1890-4	Gothic Revival	C	B
c		stone wall		1890		C	St
14a	700	Capt. John Hatch	103 Main St.	c1750	Colonial	C	B
b		shed				NC	B
c		St Barnabas Parish Hall		1958		NC	B
d		carriage sheds/Chapel		1894/1962		NC	B
e		1-car gar, stucco		c1930		C	B
15a	1	Nathaniel Shiverick House	98 Main St.	c1812	Federal	C	B
b		two-car garage, arched, hip		c1920		C	B
c	701	EEC Swift Sr. House	108 Main St.	c1850, moved c1920	Cape	C	B
16	688	Falmouth Nat'l Bank	84 Main St.	1821/c1950	Classical Revival	NC	B
17a	18	Erasmus Gould House	78 Main St.	1852	Italianate	C	B
b		1-car garage		c1931		C	B
18	19	First Cong. Church	68 Main St	1796/1857	Italianate	C	B
19a	20	Capt. Wm. Bodfish	54 Main St	1814	Federal	C	B
b		two car garage		c1920		C	B
c		5-rail fence, steam bent		pre-1897		C	St

**FALMOUTH VILLAGE GREEN
FALMOUTH, (BARNSTABLE COUNTY)
DISTRICT DATA SHEET**

MAP#	MHC#	HISTORIC NAME	ST. ADDRESS	DATE OF CONSTRUCTION	STYLE	STATUS	RESOURCE
20a	911	Meeting House plaque	Village Green	1930		C	O
b		wishing well	Village Green	1930		C	St
c	920	Meeting House Lot		1749		C	Si
d		fence		1832/1882/1956		C	St
e		flagpole at tip/in center		pre1850/1900		C	O
f		utility box				NC	O
g		300th anniversary. stone 21 trees (11 Elm, CO 9 Pin Oak, 1 Ginko)		1986		NC	O
21	15	Braddock Dimmick House	40 Main St.	1804/1894	Federal/Queen Anne	C	B
b		carriage house/barn		1804/1894	Federal/Queen Anne	C	B
22	16	Capt. John Grannis House	14 Hewins St.	c1765	Federal	C	B
23a	17	John Jenkins	20 Hewins St.	1822	Federal	C	B
b		barn/2-car garage, hip		c1850/1935		C	B
24a	21	Wood/Wicks House	55 Palmer Ave.	1790	Early Classic Rev.	C	B
b		Barn		c1795		C	B
c		gazebo		1947		NC	St
d		colonial garden		1947		NC	Si
25	N/A	W. Harrison/Hewins House	64 Palmer Ave.	1917	Dutch Colonial	C	B
26	487	Conant House	65 Palmer Ave.	c1730	Colonial	C	B
27a	23	William C. Davis	70 Palmer Ave.	1899	Gothic/Shingle	C	B
b		shed				NC	B
28a	22	Rawson Jenkins	73 Palmer Ave.	1910, move ca. 1920	Queen Anne	C	B
b		Barn		c1910		C	B

**FALMOUTH VILLAGE GREEN
FALMOUTH, (BARNSTABLE COUNTY)
DISTRICT DATA SHEET**

MAP#	MHC#	HISTORIC NAME	ST. ADDRESS	DATE OF CONSTRUCTION	STYLE	STATUS	RESOURCE
29a	743	Wm. N. Davis House	80 Palmer Ave.	1894	Gothic	C	B
b		barn		1905		NC	B
30a	740	Joseph C. Fish House	81 Palmer Ave.	1901		C	B
b		garage		1901	Gothic	C	B
c		house	83 Palmer Ave.	c1940		C	B
31a	742	Geo. W. Jones House	88 Palmer Ave.	1897-1903	Shingle	C	B
b		2-car garage	facing N. Main St	c1929		C	B
c		shed		1920		C	B
32a	741	Queen's Buyway	87,89,91,93,95 Parkway Bldg.	1926	Colonial Revival	C	B
b		2nd bldg	Palmer Ave. row of stores 115,119,123	1926	Colonial Revival	C	B
33a	46	Rowland Robinson Hse	127 Palmer Ave.	1822	Federal	C	B
b		3-car stable, apts	133 Palmer Ave	c1933		NC	B
34a	741	Queen's Buyway	100 Palmer Ave.	1925	Colonial Revival	C	B
b			114,110,106,104 Palmer Ave. row of stores 37,39,41,43,45,47,49	1925	Colonial Revival	C	B
c		store	North Main St. 35, 33 N. Main St.	1925	Colonial Revival	C	B
35	744	Primary School	129 North Main St.	c1890, moved c1920		C	B
36	739	Falmouth Coal	21 North Main St.	c1829	Greek Revival	C	B
37a	N/A	Watson Barn/apts	13-15 N. Main St	c1897/1923	Late Victorian	C	B
b		two-car garage		c1990		NC	B

**FALMOUTH VILLAGE GREEN
FALMOUTH, (BARNSTABLE COUNTY)
DISTRICT DATA SHEET**

MAP#	MHC#	HISTORIC NAME	ST. ADDRESS	DATE OF CONSTRUCTION	STYLE	STATUS	RESOURCE
38	690	William Nye Jr	1 Locust St.	1830	Federal	C	B
39	N/A	blacksmith shop site		c1830			V
40a	51	Celia Bourne House	18 Locust St.	1873	Greek Revival	C	B
b		1 car garage		c1930		C	B
41a	50	Wm. Nye Sr. House	19 Locust St.	c1800	Federal	C	B
b		2-car garage		c1920		C	B
42	N/A	Irish Cent. Pub shed	29 Locust St.			NC	B
43a	N/A	Butler House	28 Locust St.	c1890	other: Gable Front	C	B
b		1 car garage/shed		pre 1930		C	B
44	691	Capt. L. Lawrence Hse	37 Locust St.	1872	Italianate	C	B
45a	54	Capt. Zimri Tobey Hse	38 Locust St.	c1750-94/1914	Cape	C	B
b		carriage house/office		1880/1980		NC	B
46a	55	C. Ebenezer Nye Hse	49 Locust St.	1767/1985	Colonial	C	B
b		barn/condominiums	15 Simpson Lane	1986		NC	B
c		condominiums	21 Simpson Lane	1986		NC	B
d		condominiums	29 Simpson Lane	1986		NC	B
47		Little Peach Store	59 Locust St.	1969		NC	B
48	56	Capt. T. Lawrence Hse	75 Locust St.	1861	Italianate	C	B
49a	692	Capt. Freeman Lewis	80 Locust St.	1893	Queen Anne	C	B
b		House barn/carriage house		1893		C	B

**FALMOUTH VILLAGE GREEN
FALMOUTH, (BARNSTABLE COUNTY)
DISTRICT DATA SHEET**

MAP#	MHC#	HISTORIC NAME	ST. ADDRESS	DATE OF CONSTRUCTION	STYLE	STATUS	RESOURCE
50a	693	Wood Lumber Bldg	81 Locust St.	1908	Colonial Revival	C	B
b		Shed 2/stone garage		c1920		C	B
c		Shed 3		c1930		C	B
d		Shed 4		c1908		C	B
e		Shed 5		c1915		C	B
f		Bldg 6		c1970		NC	B
51a	57	Warren Gifford House	96 Locust St.	c1795	Federal,	C	B
52	58	Thomas Lawrence	95 Locust St.	c1830	Early Classic Rev.	C	B
53a	59	Thatcher Lewis Copper Beech	105 Locust St.	c1800	Federal/Shingle	C	B
54a	808	Old Burying Ground	Off Mill Road	1705		C	Si

TOTAL RESOURCES:

Contributing

79 buildings
2 sites
6 structure
2 objects
89

Noncontributing

20 buildings
1 site
1 structure
2 objects
24

Key: B: building Si: site St: structure O: object

UNITED STATES DEPARTMENT OF THE INTERIOR
NATIONAL PARK SERVICE

NATIONAL REGISTER OF HISTORIC PLACES
EVALUATION/RETURN SHEET

REQUESTED ACTION: NOMINATION

PROPERTY NAME: Falmouth Village Green Historic District

MULTIPLE NAME:

STATE & COUNTY: MASSACHUSETTS, Barnstable

DATE RECEIVED: 2/16/96 DATE OF PENDING LIST: 2/27/96
DATE OF 16TH DAY: 3/14/96 DATE OF 45TH DAY: 4/01/96
DATE OF WEEKLY LIST:

REFERENCE NUMBER: 96000271

NOMINATOR: STATE

REASONS FOR REVIEW:

APPEAL: N DATA PROBLEM: N LANDSCAPE: N LESS THAN 50 YEARS: N
OTHER: Y PDIL: N PERIOD: N PROGRAM UNAPPROVED: N
REQUEST: N SAMPLE: N SLR DRAFT: ~~Y~~ NATIONAL: N

COMMENT WAIVER: N

 ACCEPT RETURN REJECT DATE

ABSTRACT/SUMMARY COMMENTS:

Historically: architecturally significant Cape Cod village district consists of 2 elements - the residential/commercial area centered around the Village Green, and the old burying ground.

RECOM./CRITERIA accept A&C

REVIEWER Patrick Andrus

DISCIPLINE Historian

TELEPHONE

DATE 3/27/96

DOCUMENTATION see attached comments Y/N see attached SLR Y/N



The Village Green / Falmouth Village Green H.D.
main st.
Falmouth, MA (Barnstable County)

Photographer: Joseph Piccione, 1996

negs at:

Falmouth Historical Society
Falmouth, MA

Photo # 1, map # 20

View from property (# 21)
on Dewins St. ✓



Conant House / Falmouth Village Green H.O.
65 Palmer Ave.
Falmouth, MA (Barnstable County)

Photographer: Joseph Piccione, 1996

negs at:

Falmouth Historical Society
Falmouth, MA

Photo # 2; Map # 26

View from across Palmer Ave.



Capt. John Hatch House / Falmouth Village Green H.D.
103 Main St
Falmouth, MA (Barnstable County)

Photographer: Joseph Piccone, 1996

negs at:

Falmouth Historical Society
Falmouth, MA

Photo # 3; Map # 12

View from Main St



Benjamin Sanford House / Falmouth Village Green H.D.
57 Main St.
Falmouth, MA (Barnstable County)

Photographer: Joseph Piccione, 1995
neg. at: Falmouth Historical Society
Photo # 4; map 11

View from Village Green



Capt. William Bodfish House #19 / Falmouth Village Green H.D.

Dr. Francis Wicks House #24

54 & 55 main St

Falmouth, MA (Barnstable County)

Photographer: Joseph Piccione, 1995

negs. at: Falmouth Historical Society
Falmouth, MA

Photo #5; map #19, #24

Views of Bodfish House #19

and the Wicks House #24 to the
left & behind - from Palmer Ave
& the Village Green #20



Katharine Lee Bates / Falmouth Village Green H.D.

16 Main St.

Falmouth, MA (Barnstable County)

Photographer Joseph Piccione, 1996

negs at Falmouth Historical Society
Falmouth, MA

Photo #6, Map #4

View from Main St



Thatcher Lewis House / Falmouth Village Green H.D.

105 Locust St.

Falmouth, MA (Barnstable County)

Photographer: Joseph Piccione, 1995

reg. at: Falmouth Historical Society
Falmouth, MA

Photo # 7 map 53

View from Locust St.



Thomas Lawrence House / Falmouth Village Green H.D.
95 Locust St.
Falmouth, MA (Barnstable County)

Photographer: Joseph Piccione, 1995
negs at Falmouth Historical Society
Falmouth, MA

Photo # 8; map # 50

View from Locust St.



First Congregational Church #18 / Falmouth Village Green H.D.
68 main st

Erasmus Gould House # 17
79 Palmer Ave
Falmouth, MA (Barnstable County)

Photographer: Joseph Piccione, 1995
regs at: Falmouth Historical Society
Falmouth, MA

Photo # 9, map # 18 & 17

View from the Village Green



St. Bernard's Memorial Church / Falmouth Village Green H.D.
Main St
Falmouth, MA (Barnstable County)

Photographer: Joseph Piccione, 1995
regs at: Falmouth Historical Society
Falmouth, MA

Photo # 10; Map # 13

View from Village Green



Wate Watson House / Falmouth Village Green N.D.

4 Main St

Falmouth, MA (Barnstable County)

Photographer: Joseph Piccione, 1995

regs: Falmouth Historical Society
Falmouth, MA

Photo #11; map #2

View from Main St.



William C. Dawes House / Falmouth Village Green H.O.

70 Palmer Ave.

Falmouth, MA (Barnstable County)

Photographer: Joseph Piccione, 1995

Keystat: Falmouth Historical Society
Falmouth, MA

Photo #12; map 27

View from main st.



QUEENS BUYWAY
OFFICES AND SHOPS

Upper Cape Realty

Upper
Cape
Realty

SOUTH
28

Queens Bayway / Falmouth Village Green H.O.

Palmer Ave

Falmouth, MA (Barnstable County)

Photographer: Joseph Piccione, 1995

negs: Falmouth Historical Society

Falmouth, MA

Photo 13; map 34

View from Palmer Ave/Main St.



The WOOD LUMBER CO.

Wood Lumber Co. / Falmouth Village Green H.O.

21 Locust St.

Falmouth, MA (Barnstable County)

Photographer: Joseph Precione, 1995

negat: Falmouth Historical Society
Falmouth, MA

Photo # 14, map 50

View from Locust St.



Old Spring Ground
mill

/ Falmouth Village Green H.D.

Falmouth, MA (Barnstable County)

Photographer: Joseph Piccione, 1996

negs at: Falmouth Historical Society
Falmouth, MA

Photo # 15; map # 54

View from Cemetery base

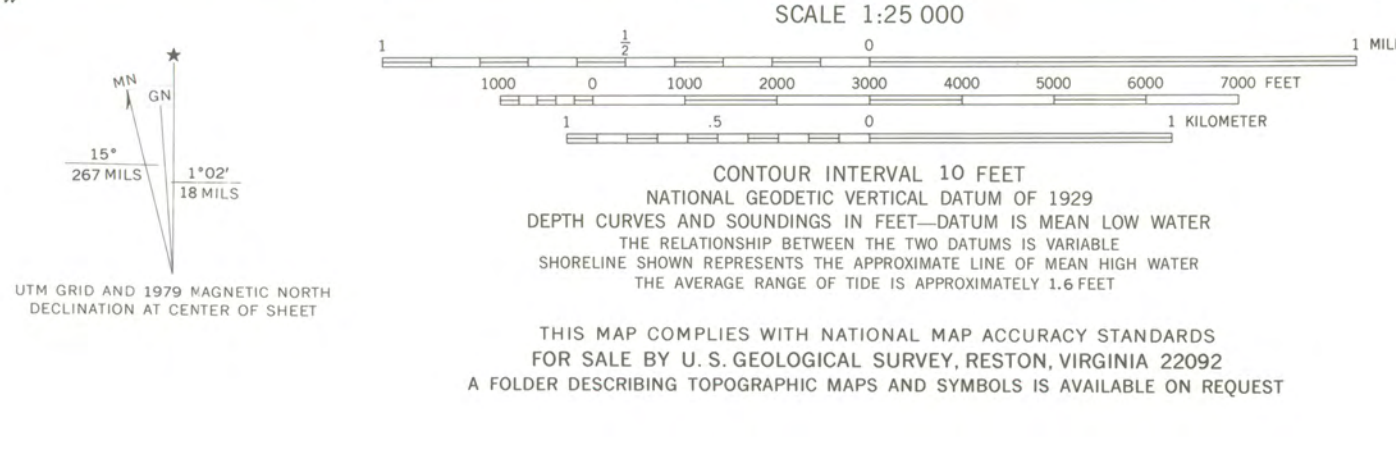


VILLAGE GRAY
DOTTED

A-19 305050 4601350
B-19 304900 4601060
C-19 304800 4601040
D-19 304870 4601200
E-19 304600 4601180
F-19 304480 4601160
I-19 304480 4601440
J-19 304560 4601360
K-19 304780 4601580
AA-19 304580 4600720
BB-19 304520 4600660
CC-19 304400 4600740
FF-19 304460 4600840

Falmouth Village from
Historic District
Falmouth (Barnstable County)
Massachusetts
Sheet 1 of 2

Mapped, edited, and published by the Geological Survey
Control by USGS, USC&GS, and Massachusetts Geodetic Survey
Topography by planetable surveys 1936. Revised from aerial
photographs taken 1971. Field checked 1972
Selected hydrographic data compiled from USC&GS Charts 259 and
260 (1971). This information is not intended for navigational purposes
Polyconic projection. 1927 North American datum
10,000-foot grid based on Massachusetts coordinate system,
mainland zone
1000-meter Universal Transverse Mercator grid,
zone 19
Boundaries in tidewater areas from information furnished
by Massachusetts Department of Public Works
Red tint indicates areas in which only landmark buildings are shown
There may be private inholdings within the boundaries of
the National or State reservations shown on this map



ROAD CLASSIFICATION

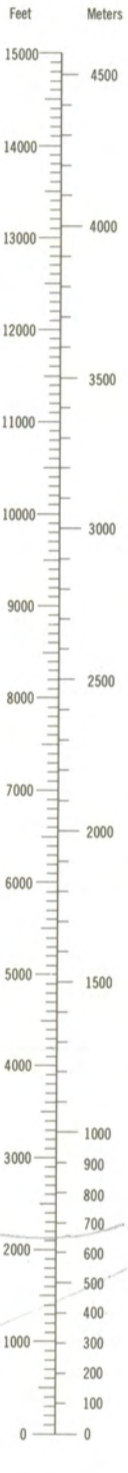
Primary highway, hard surface	Light-duty road, hard or improved surface
Secondary highway, hard surface	Unimproved road
Interstate Route	U.S. Route
	State Route

QUADRANGLE LOCATION

FALMOUTH, MASS.
N4130-W7030/7.5
1972
PHOTOREVISED 1979
AMS 6867 II SE—SERIES V814



CONVERSION
SCALES



Feet	Meters
1	0.3048
2	0.6096
3	0.9144
4	1.2192
5	1.5240
6	1.8288
7	2.1336
8	2.4384
9	2.7432
10	3.0480

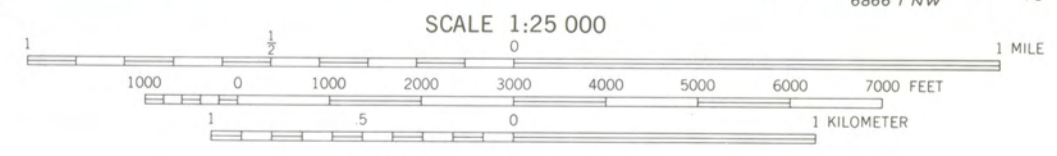
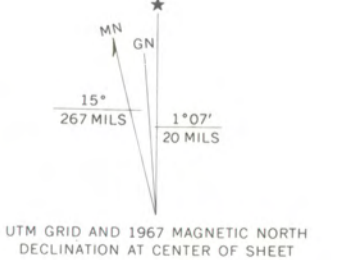
To convert feet to meters
multiply by 0.3048
To convert meters to feet
multiply by 3.2808

- F-19364480 4601160
- G-19364340 4601180
- H-19364420 4601340
- I-19364480 4601440
- CC-19364460 4600740
- DD-19364320 4601020
- EE-19364400 4600880
- FF-19364460 4600840

Falmouth Village Green Historic District
Falmouth (Barnstable County)
Massachusetts

Sheet 2 of 2

Mapped, edited, and published by the Geological Survey
Control by USGS, USC&GS, and Massachusetts Geodetic Survey
Topography by planetable surveys 1936. Revised from aerial
photographs taken 1966. Field checked 1967
Selected hydrographic data compiled from USC&GS Chart 260 (1965)
This information not intended for navigational purposes
Polyconic projection. 1927 North American datum
10,000-foot grid based on Massachusetts coordinate system,
mainland zone and island zone
1000-meter Universal Transverse Mercator grid,
zone 19
Boundaries in tidewater areas from information furnished
by Massachusetts Department of Public Works



SCALE 1:25 000
CONTOUR INTERVAL 10 FEET
DATUM IS MEAN SEA LEVEL
DEPTH CURVES AND SOUNDINGS IN FEET—DATUM IS MEAN LOW WATER
SHORELINE SHOWN REPRESENTS THE APPROXIMATE LINE OF MEAN HIGH WATER
THE MEAN RANGE OF TIDE IS APPROXIMATELY 1.5 FEET IN
VINEYARD SOUND AND 4 FEET IN WEST FALMOUTH HARBOR



ROAD CLASSIFICATION
Primary highway, all weather, hard surface
Secondary highway, all weather, hard surface
Light-duty road, all weather, improved surface
Unimproved road, fair or dry weather
State Route

WOODS HOLE, MASS.
N4130—W7037.5/7.5

1967

AMS 6867 II SW—SERIES V814



TOWN OF FALMOUTH
Scale 100 feet to an inch

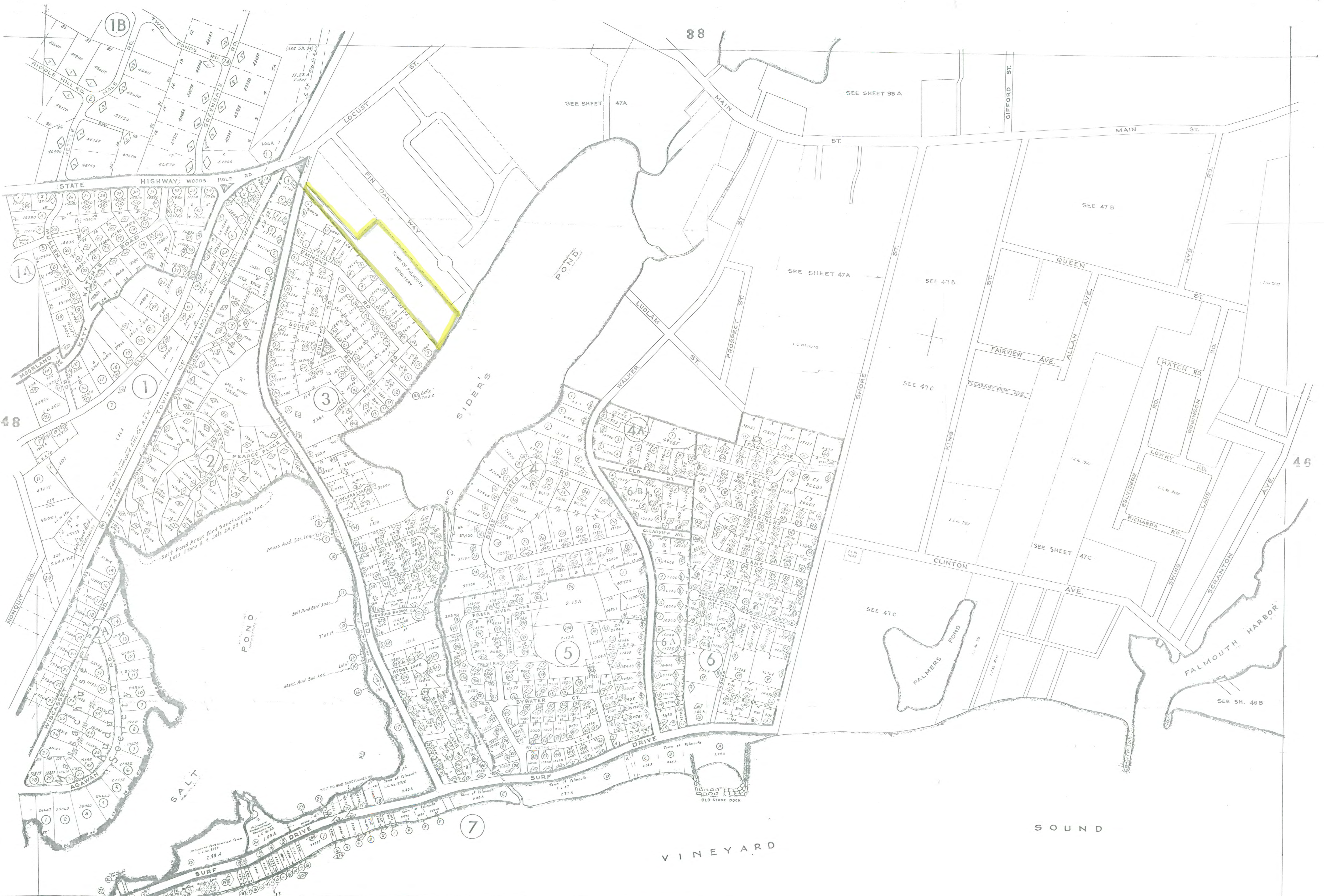
DEPARTMENT OF PUBLIC WORKS
ENGINEERING DIVISION

FOR ASSESSING PURPOSES ONLY
Not to be used for deed descriptions
nor scaled for land surveys
Falmouth Village Green Historic District
Falmouth (Barnstable County) Massachusetts
Sheet 143

47B CORRECTED TO JAN. 1, 19

SHEET 38A

RECEIVED
DEC 22 1993
MASS. HIST. COMM.



TOWN OF FALMOUTH
Scale 200 feet to an inch

50

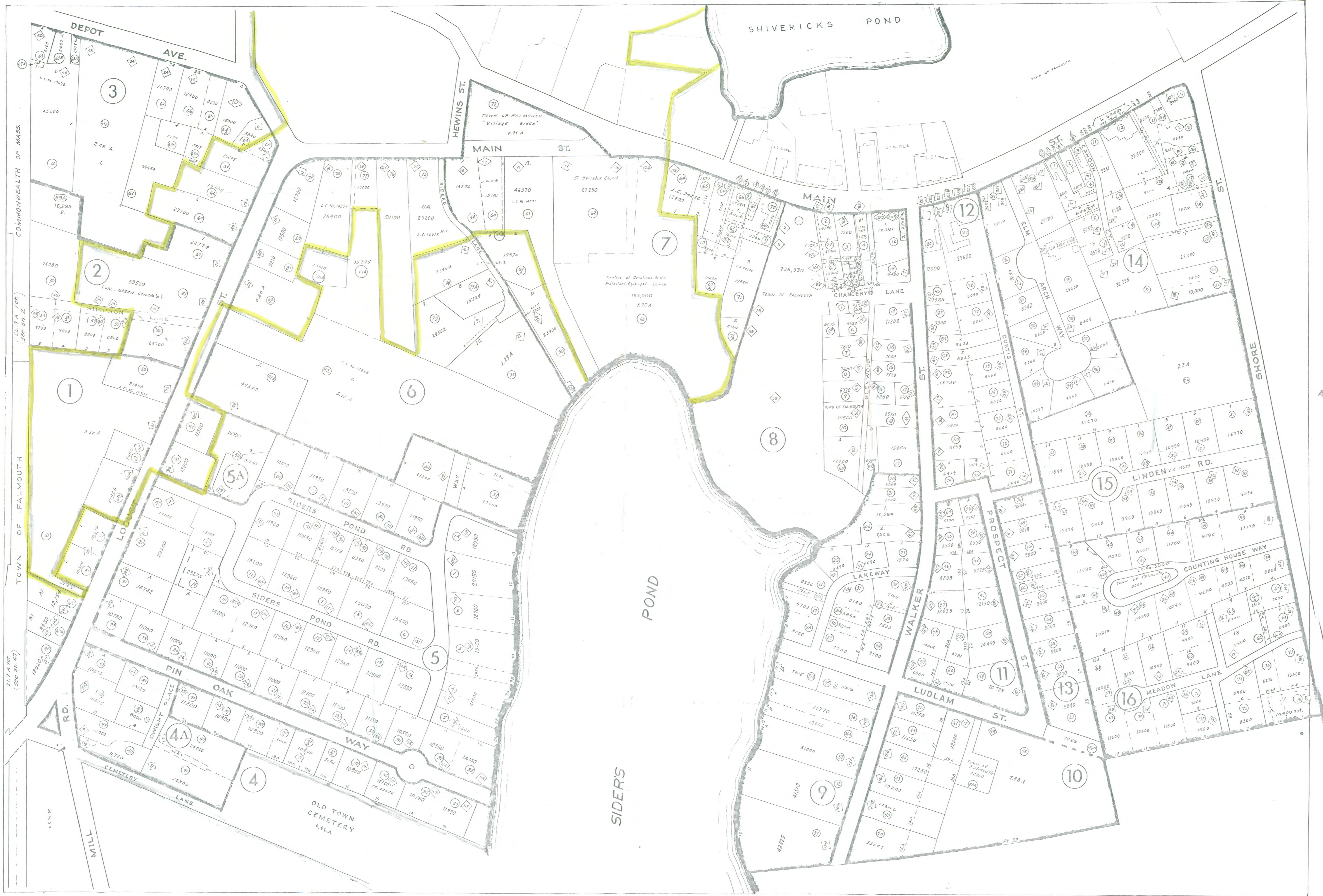
DEPARTMENT OF PUBLIC WORKS
ENGINEERING DIVISION

Falmouth Village Green Historic District
Falmouth (Barnstable County), Massachusetts
Sheet 2 of 3

FOR ASSESSING PURPOSES ONLY
Not to be used for deed descriptions
nor scaled for land surveys

CORRECTED TO JAN. 19

SHEET 47





TOWN OF FALMOUTH

(45) MAP NUMBER

[38] STREET NUMBER



TOWN OF FALMOUTH

(45) MAP NUMBER

[38] STREET NUMBER



The Commonwealth of Massachusetts
William Francis Galvin, Secretary of the Commonwealth
Massachusetts Historical Commission

February 8, 1996

Carol Shull
National Register of Historic Places
Department of the Interior
National Park Service
P. O. Box 37127
Washington, D. C. 20013-7127



Dear Ms. Shull:

Enclosed please find the following nomination form:

Falmouth Village Green Historic District, Falmouth
(Barnstable County), Massachusetts, 02556

The nomination has been voted eligible by the State Review Board and has been signed by the State Historic Preservation Officer. Owners were notified of pending State Review Board consideration 60-120 days before the meeting and were afforded the opportunity to comment.

Sincerely,

A handwritten signature in cursive script that reads "Betsy Friedberg".

Betsy Friedberg
National Register Director
Massachusetts Historical Commission

enclosure

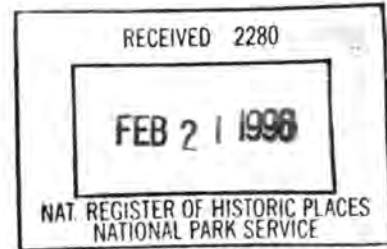
cc: Mary Lou Smith, Chairperson, Falmouth Historical Commission
Virginia Valiela, Chair, Falmouth Board of Selectmen
Ann Sears, Falmouth CLG Coordinator
Nancy Serotkin, Falmouth Public Library



The Commonwealth of Massachusetts
William Francis Galvin, Secretary of the Commonwealth
Massachusetts Historical Commission

February 15, 1996

Ms. Carol Shull
Keeper
National Register of Historic Places
National Park Service
P.O. Box 37127
Washington, DC 20013-7127



RE: Falmouth Village Green National Register Historic District

Dear Ms. Shull:

The enclosed pages contain minor technical corrections to the National Register nomination for the Falmouth Village Green, which was submitted for your consideration last week. Because the final count of contributing and noncontributing resources has changed by one property, we are including a new copy of the entire cover form as well. Please substitute the following revised pages for the same pages in the text of the original nomination: sect. 7, p. 1; sect. 7, p. 2; sect. 7, p. 9; sect. 7, p. 13; sect. 7, p. 14; sect. 8, pp. 4-6; sect. 8, p. 8, sect. 8, p. 11; sect. 8, p. 14; sect. 10, p. 2; and pages 1 and 6 of the District Data Sheet.

Thank you for accommodating our need to incorporate these very minor changes to the text of the nomination. If you have any questions, please do not hesitate to call Karen Parker, Terry Adams, or me at 617/727-8470.

Sincerely,

A handwritten signature in cursive script that reads "Betsy Friedberg".

Betsy Friedberg
National Register Director
Massachusetts Historical Commission

enclosures

cc: Ann Sears, Falmouth Historical Commission