



Wilshire Boulevard Temple

3663 Wilshire Boulevard, Los Angeles, CA

J. M. Hawthorne, Commercial Photographer

June, 1929

Wilshire Boulevard Temple

Looking N.E. at S.W. Elevation of Temple

from across Wilshire Boulevard

NOV 25 1981



3957

B'NAI B'RITH TEMPLE
WILSHIRE AND HOBART

HERBERT M. BARUCH CORPORATION
CONSTRUCTORS

LOS ANGELES

DATE 6-15-28

Wilshire Boulevard Temple

3663 Wilshire Boulevard, Los Angeles, CA

J. M. Hawthorne, Commercial Photographer

June 16, 1928

Wilshire Boulevard Temple

Looking E. at W. Elevation Steel Frame

during Early Construction from across

Hobart Boulevard

NOV 25 1981



B'NAI B'RITH TEMPLE
WILSHIRE AND HOBART

HERBERT M. BARDON CORPORATION
A PRINCETON COMPANY

Wilshire Boulevard Temple

3663 Wilshire Boulevard, Los Angeles, CA

J. M. Hawthorne, Commercial Photographer

July 13, 1928

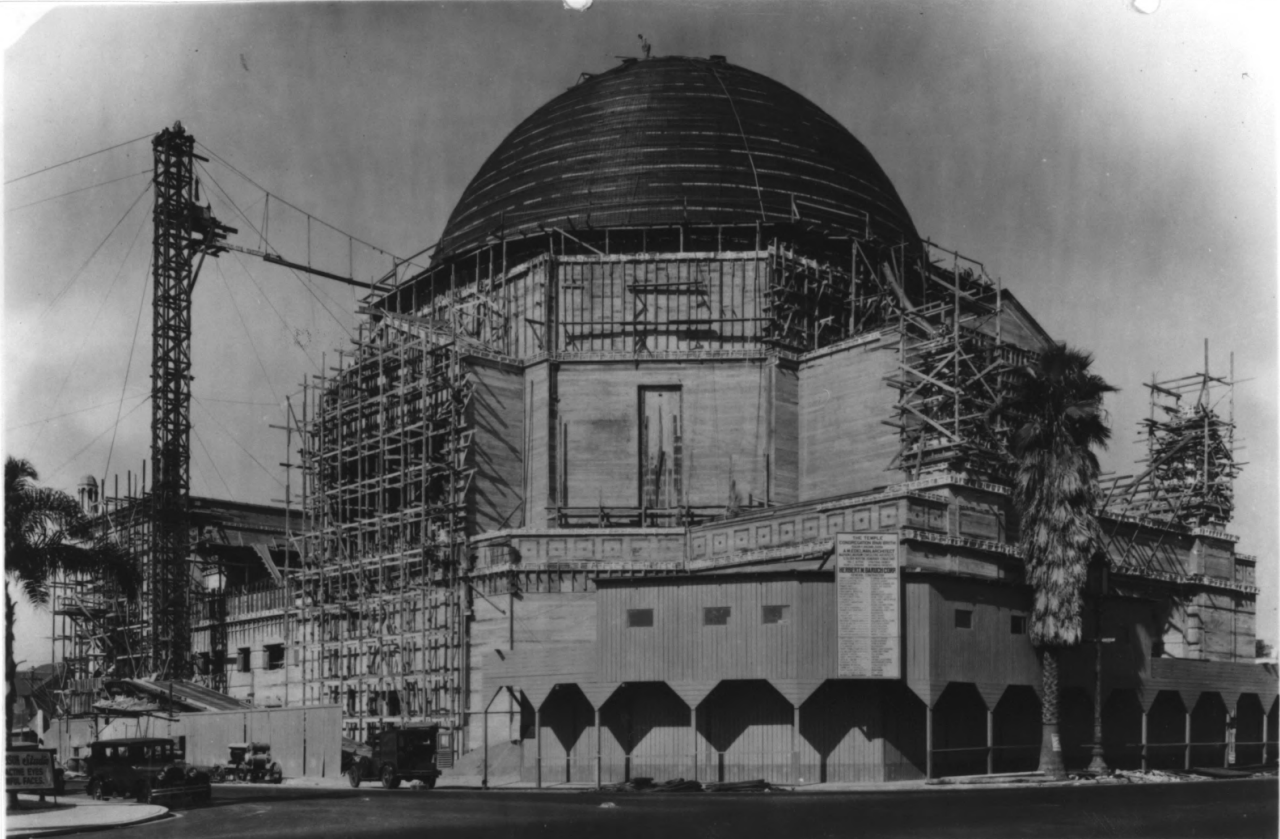
Wilshire Boulevard Temple

Looking N.E. at S.W. Elevation during Early

Construction, Beginning Dome Application

from across Wilshire Boulevard

NOV 25 1981



4138

B'NAI B'RITH TEMPLE
WILSHIRE AND HOBART
HERBERT M. BARUCH CORPORATION
CONSTRUCTORS

LOS ANGELES

DATE-

8-30-2

Wilshire Boulevard Temple

4 of 22

3663 Wilshire Boulevard, Los Angeles, CA

J. M. Hawthorne, Commercial Photographer

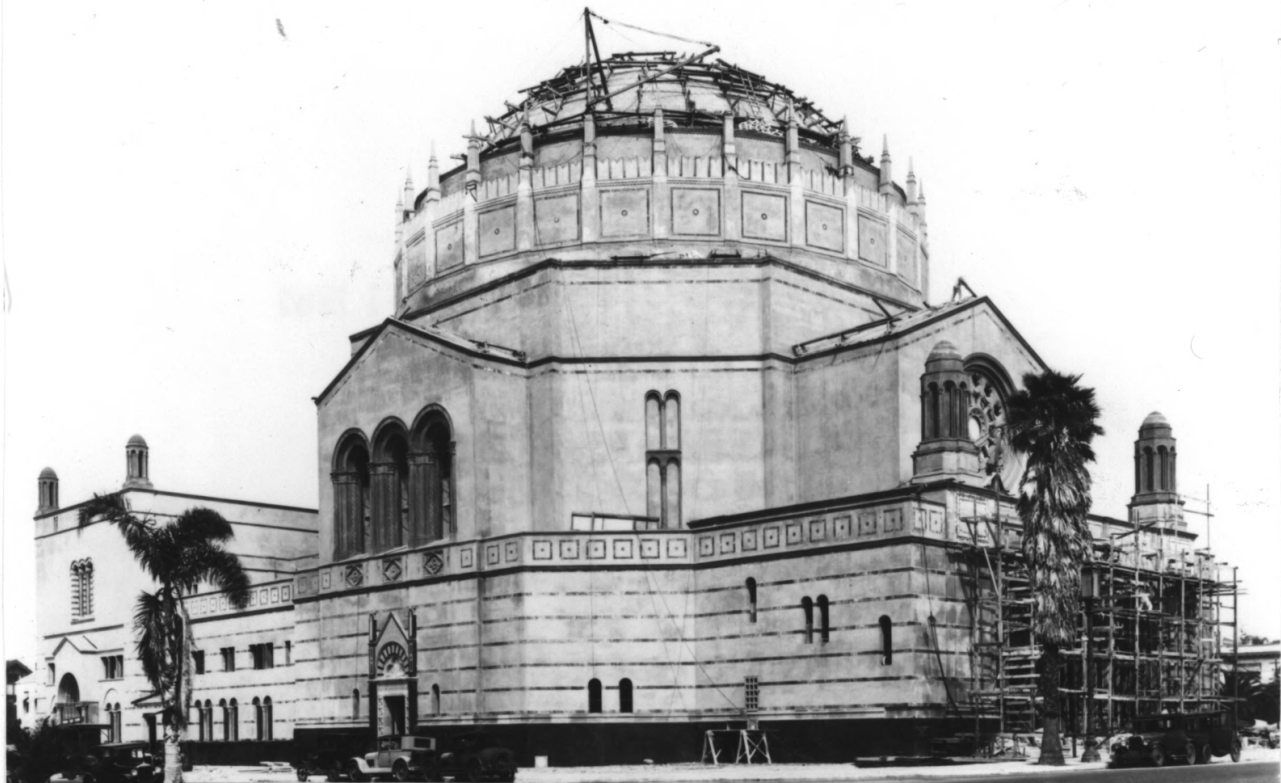
August 30, 1928

Wilshire Boulevard Temple

Looking N.E. at S.W. Elevation during

Mid-Completion of Temple Construction

NOV 25 1981



JEWISH TEMPLE
Hobart & Wilshire
H. M. BARUCH CORP.
Constructors
Los Angeles Date 3-15-29

Wilshire Boulevard Temple

3663 Wilshire Boulevard, Los Angeles, CA

J. M. Hawthorne, Commercial Photographer

March 15, 1929

Wilshire Boulevard Temple

Looking N.E. at S.W. Elevation Near

Completion of Temple Construction

NOV 25 1981



Wilshire Boulevard Temple

3663 Wilshire Boulevard, Los Angeles, CA

J. M. Hawthorne, Commercial Photographer

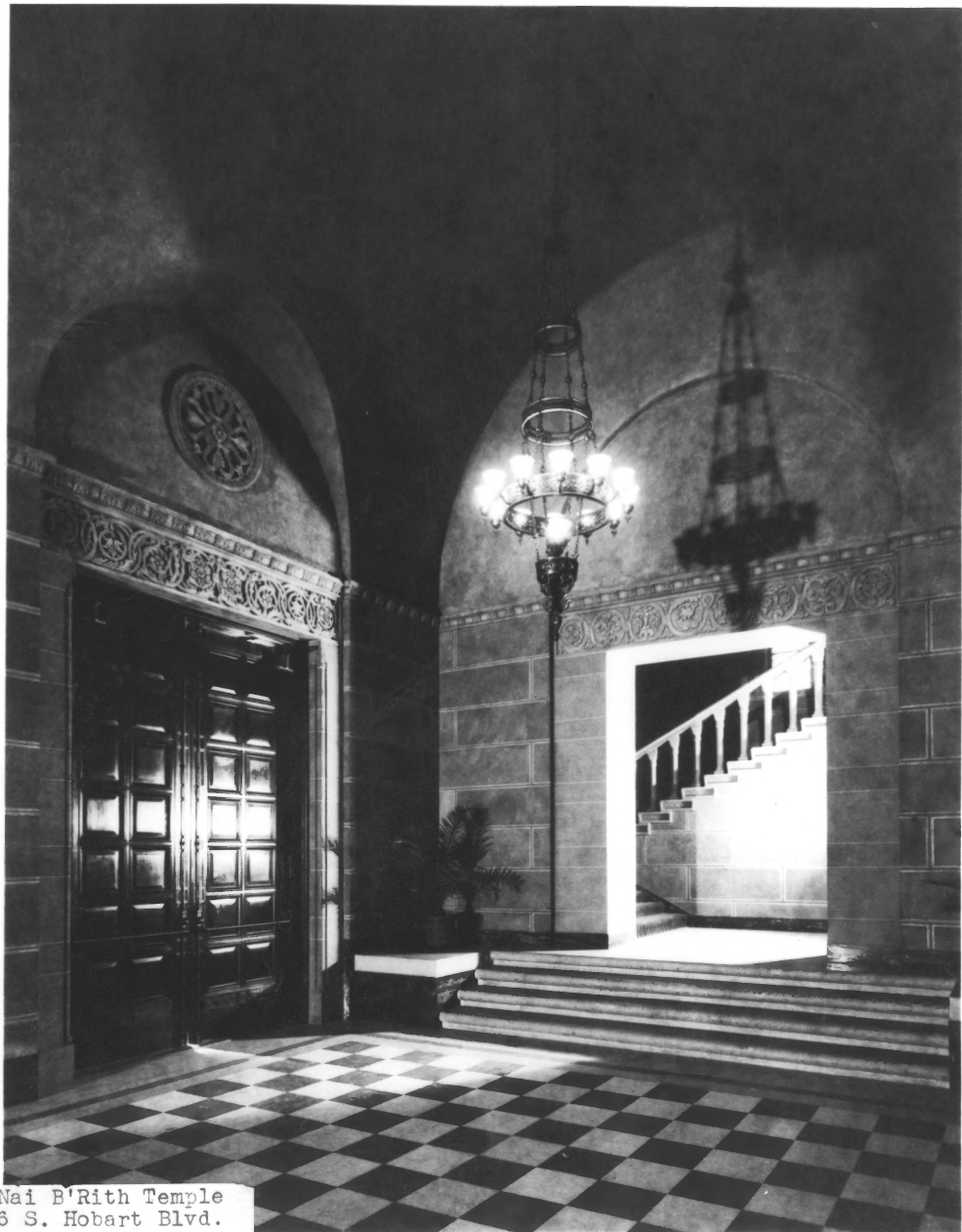
June, 1929

NOV 25 1981

Wilshire Boulevard Temple

Looking N.W. at Main Entrance facing

Wilshire Boulevard



B'Nai B'Rith Temple
836 S. Hobart Blvd.
Los Angeles, Calif.
Group III - Churches

Wilshire Boulevard Temple 7 of 22

3663 Wilshire Boulevard, Los Angeles, CA

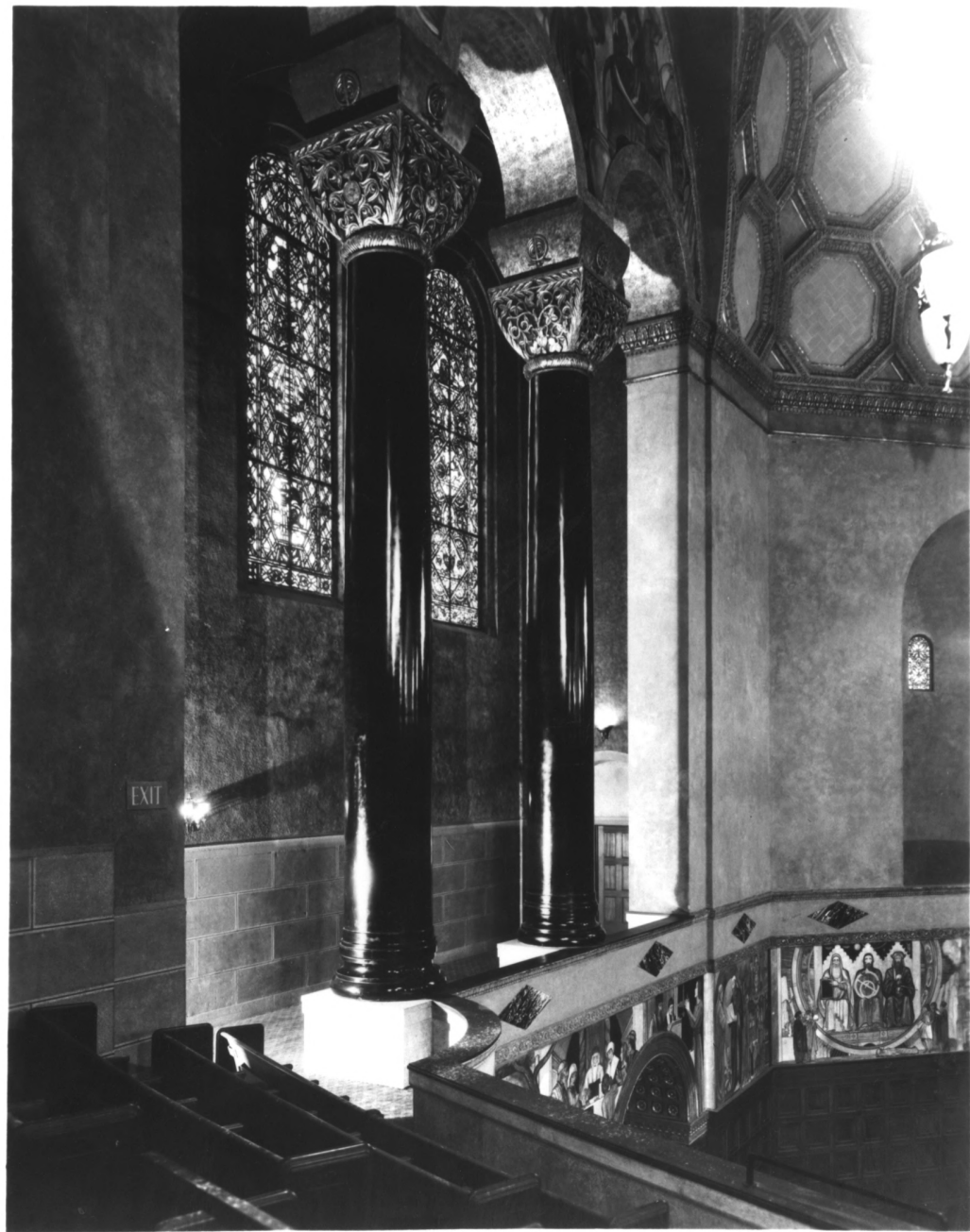
Photographer Unknown

Approximately June, 1929

NOV ~ 5 1981

Wilshire Boulevard Temple

Looking S. W. at W. side of Vestibule,
toward Rear of Sanctuary (South)



Wilshire Boulevard Temple

8 of 22

3663 Wilshire Boulevard, Los Angeles, CA

J. M. Hawthorne, Commercial Photographer

Approximately June, 1929

Wilshire Boulevard Temple

NOV 25 1981

On Balcony Level, Looking N.W. at W. Wall
of Sanctuary, showing Columns and Stained
Glass Windows



Wilshire Boulevard Temple 9 of 22

3663 Wilshire Boulevard, Los Angeles, CA

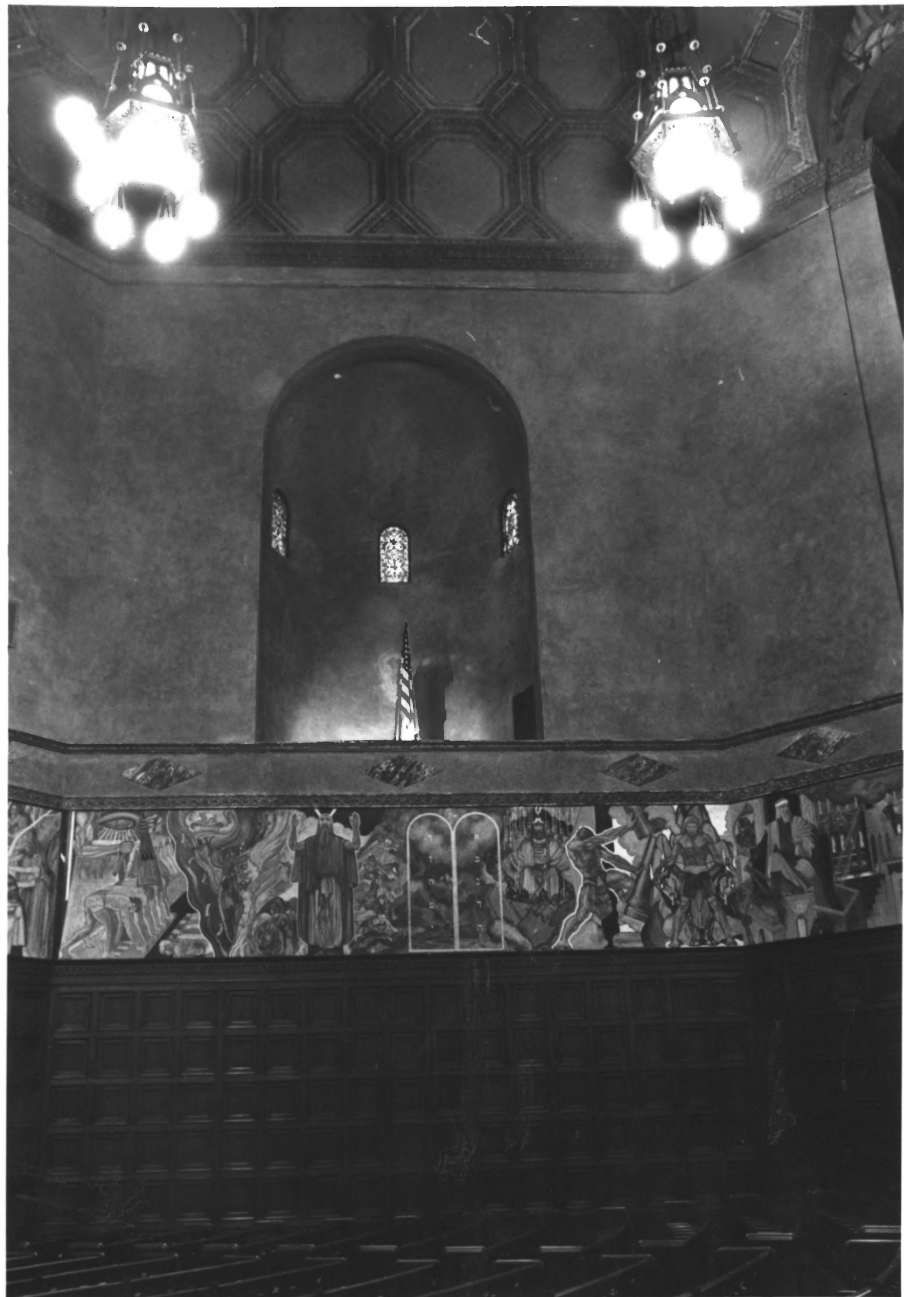
Stephen B. Barasch, Barasch Architects

April 21, 1981

Barasch Architects & Associates, Inc.

On Balcony Level, Looking North at the

Altar Area of Temple Sanctuary NOV 25 1981



Wilshire Boulevard Temple

10 of 22

3663 Wilshire Boulevard, Los Angeles, CA

Stephen B. Barasch, Barasch Architects

April 21, 1981

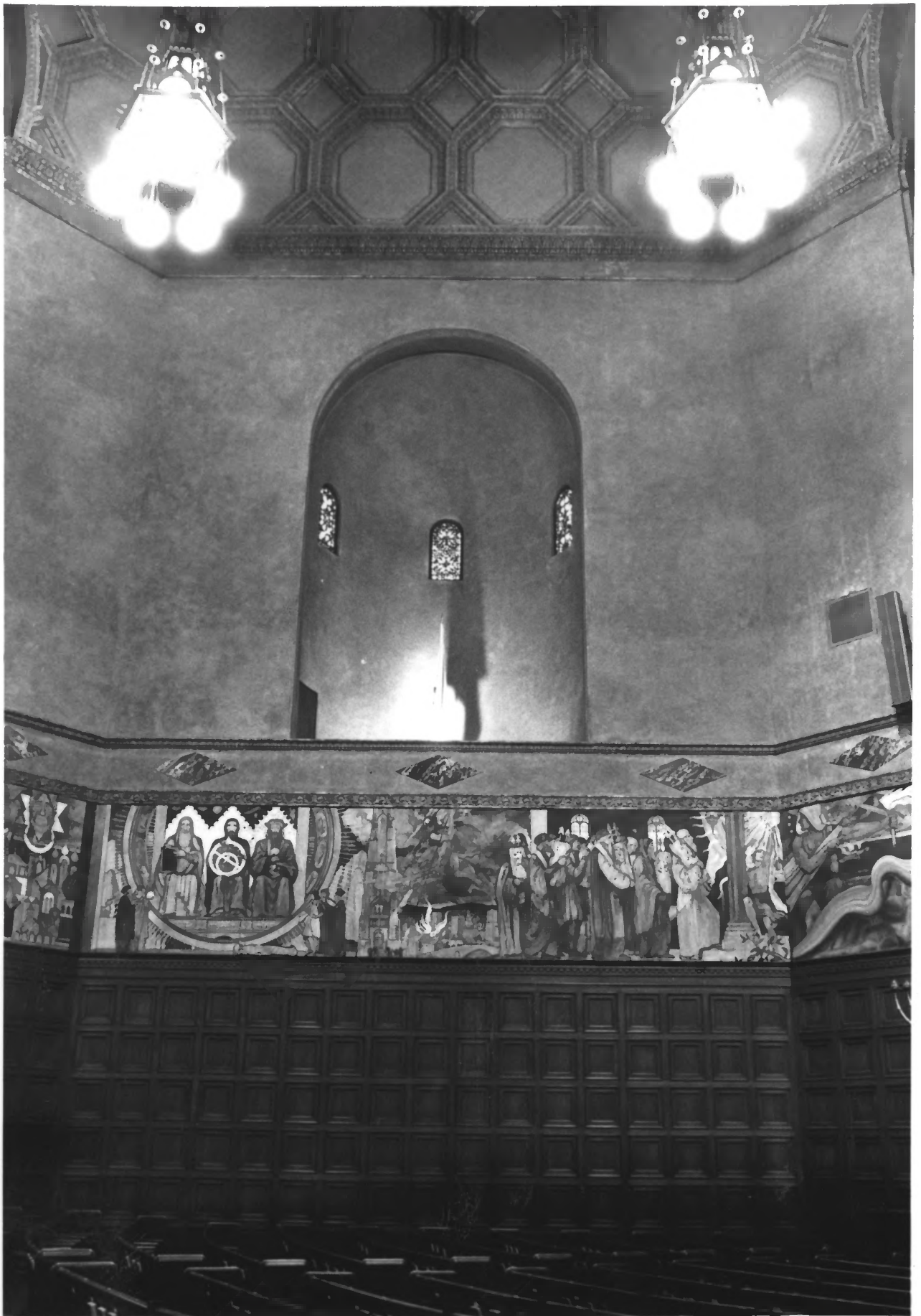
Barasch Architects & Associates, Inc.

Looking E. at the E. Wall of Sanctuary,

showing Wainscot, Mural Portion and

Side Apse

NOV 25 1981



Wilshire Boulevard Temple

11 of 22

3663 Wilshire Boulevard, Los Angeles, CA

Stephen B. Barasch, Barasch Architects

April 21, 1981

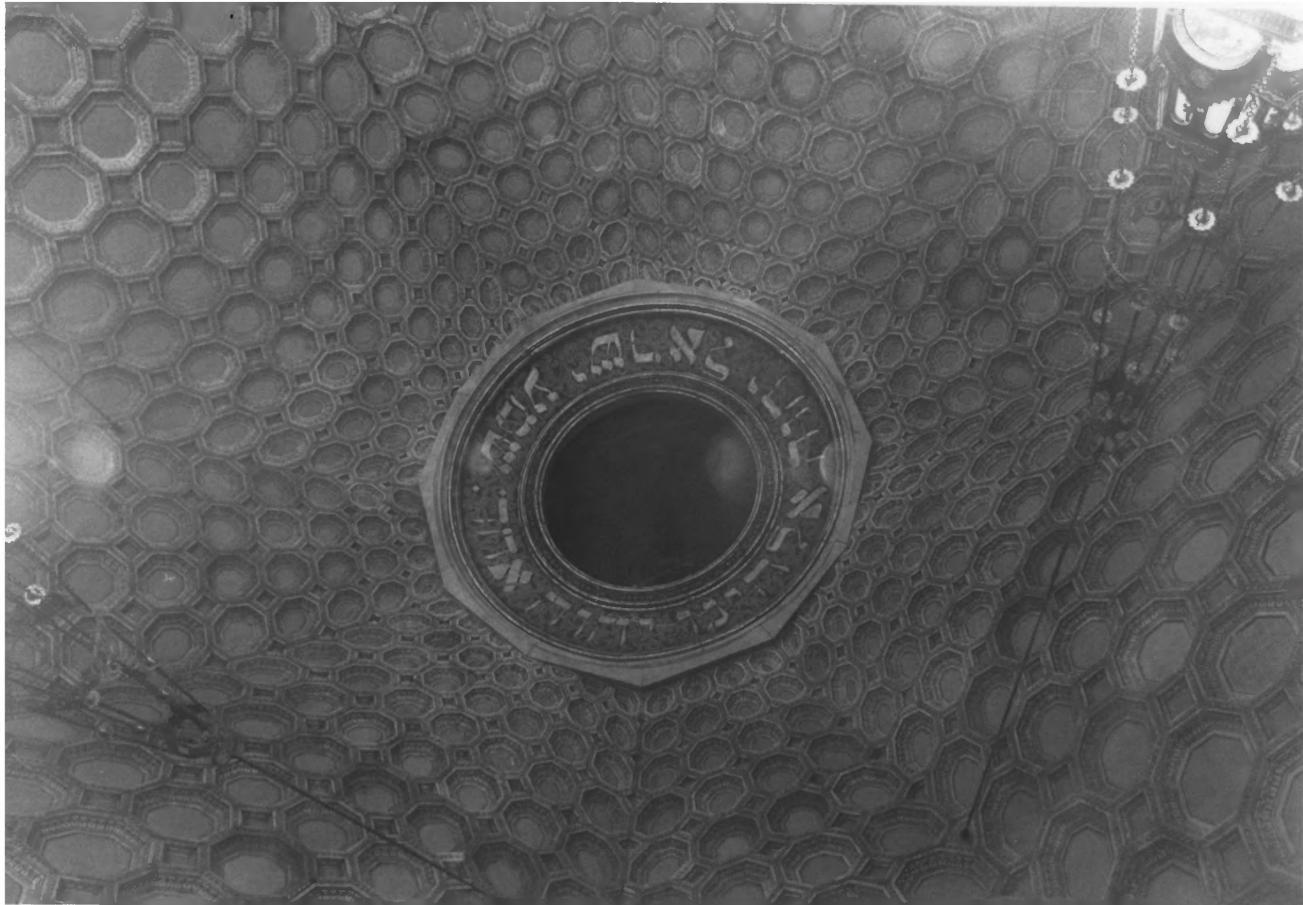
Barasch Architects & Associates, Inc.

Looking W. at the W. Wall of Sanctuary,

showing Wainscot, Mural Portion and

Side Apse

NOV 25 1981



Wilshire Boulevard Temple

3663 Wilshire Boulevard, Los Angeles, CA

Stephen B. Barasch, Barasch Architects

April 21, 1981

Barasch Architects & Associates, Inc.

Looking up from near center of Sanctuary at

Dome, showing coffers and Shema Inscription

NOV 25 1981



Wilshire Boulevard Temple

3663 Wilshire Boulevard, Los Angeles, CA

Stephen B. Barasch, Barasch Architects

April 21, 1981

Barasch Architects & Associates, Inc.

On Balcony Level, Looking South at Rose

Window in Rear of Balcony

NOV 25 1981

אנכי יי לא תרצח
לא יהיה לא תנאח
לא תשא לא תגנב
וכור את לא תענה
כבוד את לא תחסר

BEHOLD HEAVEN AND THE HEAVEN OF
HEAVENS CANNOT CONTAIN THEE HOW MUCH
LESS THIS HOUSE THAT I HAVE BUILT



Wilshire Boulevard Temple

14 of 22

3663 Wilshire Boulevard, Los Angeles, CA

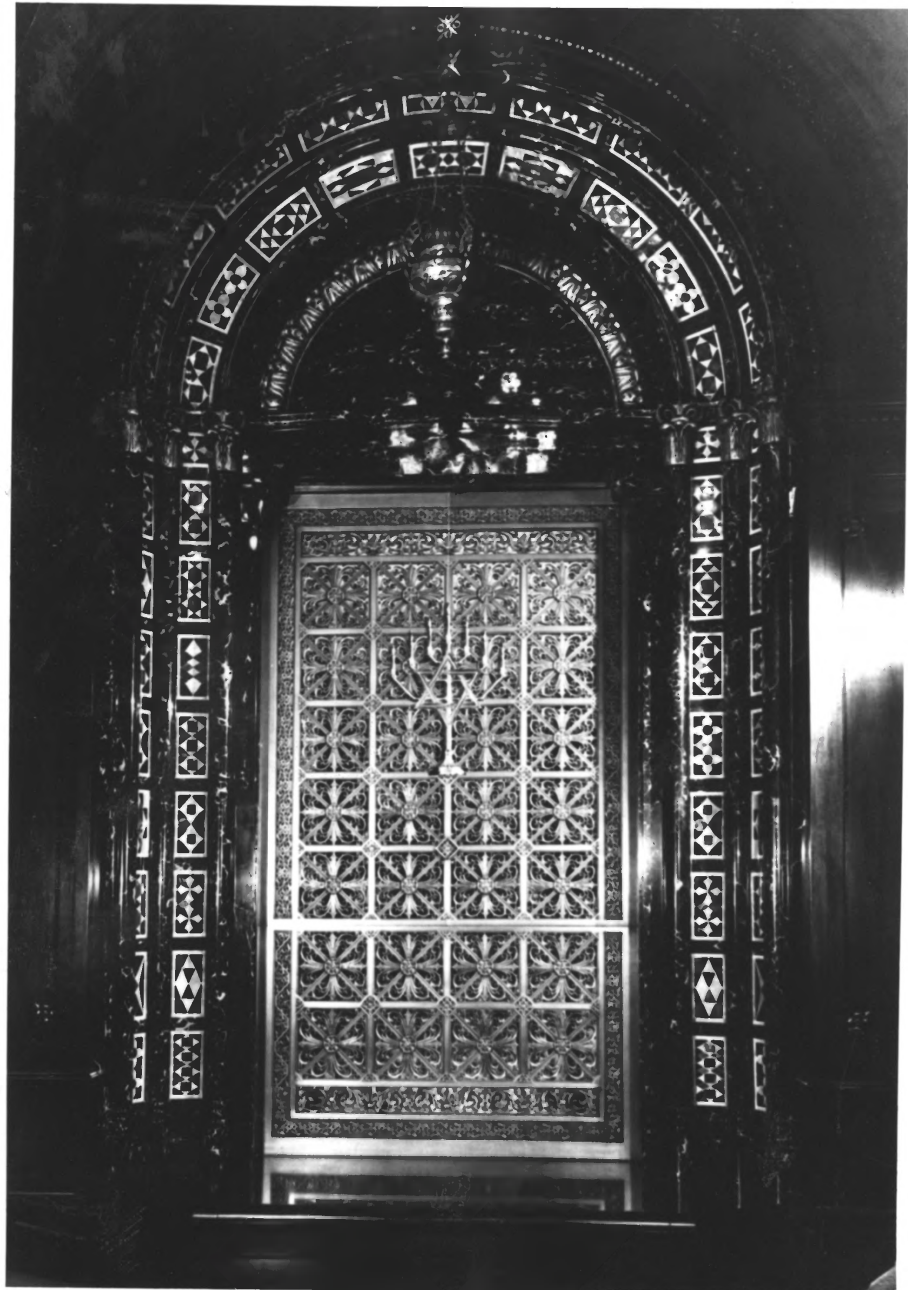
George Chacon, Barasch Architects

April 24, 1981

NOV 25 1981

Barasch Architects & Associates, Inc.

Looking N. at Middle Doorway, Main Entrance
to Temple from Wilshire Boulevard



Wilshire Boulevard Temple

15 of 22

3663 Wilshire Boulevard, Los Angeles, CA

Arnold Murai, Photographer

Date Unknown

Wilshire Boulevard Temple

NOV 25 1981

Looking North at Altar Gates



Wilshire Boulevard Temple

3663 Wilshire Boulevard, Los Angeles, CA

George Chacon, Barasch Architects

April 24, 1981

NOV 25 1981

Barasch Architects & Associates, Inc.

On Parking Level, Looking W. at Top Portion
of E. Entranceway and Lower Portion of
Stained Glass Window on E. Wall



Wilshire Boulevard Temple

3663 Wilshire Boulevard, Los Angeles, CA

George Chacon, Barasch Architects

April 24, 1981

Barasch Architects & Associates, Inc.

Looking East at West Assembly Hall Entrance-
way facing Hobart Boulevard

NOV 25 1981



Wilshire Boulevard Temple 18 of 22

3663 Wilshire Boulevard, Los Angeles, CA

Stephen B. Barasch, Barasch Architects

April 21, 1981

Barasch Architects & Associates, Inc.

Looking N.W. at S.E. Elevation of Temple
from across Wilshire Boulevard



Wilshire Boulevard Temple

3663 Wilshire Boulevard, Los Angeles, CA

Donna Eby Buckwalter, Barasch Architects

July, 1981

Barasch Architects & Associates, Inc.

Looking N.E. at W. Elevation of Assembly Hall

and Library/Classroom Wing from across

Hobart Boulevard

A black and white photograph of a modern building with a prominent entrance. The entrance features three large, dark-framed arched windows. A sign is mounted on the wall between the middle and right arches. The building is surrounded by trees and a low wall. A car is visible in the foreground on the left.

EDGAR F. MAGNIN
SCHOOL OF RELIGIOUS EDUCATION
636

Wilshire Boulevard Temple

20 of 22

3663 Wilshire Boulevard, Los Angeles, CA
Donna Eby Buckwalter, Barasch Architects
July, 1981

Barasch Architects & Associates, Inc.

Looking E. at W. Elevation of Library/Class-
room Wing (Edgar F. Magnin School of Reli-
gious Education) from across Hobart Boulevard



Wilshire Boulevard Temple

3663 Wilshire Boulevard, Los Angeles, CA

Donna Eby Buckwalter, Barasch Architects

July, 1981

Barasch Architects & Associates, Inc.

Looking S.E. at N.W. portion of site; apartment building, Library/Classroom Wing, Assembly Hall, Sanctuary from Hobart Boulevard



Wilshire Boulevard Temple

3663 Wilshire Boulevard, Los Angeles, CA

Donna Eby Buckwalter, Barasch Architects

July, 1981

Barasch Architects & Associates, Inc.

Looking W. at E. Elevation of southern-most
portion of 1929 Classroom Building from
across Harvard Boulevard