



DEC 3 1980

Cle Elum/Roslyn Beneficial
Association Hospital

Cle Elum, Washington

David Wheeler

October, 1979

Office of Archaeology and Historic
Preservation, Olympia, WA

Kittitas Co.

East (front) elevation

1 of 6

SEP 22 1980



SEP 22 1980

Cle Elum/Roslyn Beneficial
Association Hospital

Cle Elum, Washington

David Wheeler

October, 1979

Office of Archaeology and Historic
Preservation, Olympia, WA

Kittitas Co

Main entry, east elevation

NEC

3 1980

2 of 6



SEP 22 1980

Cle Elum/Roslyn Beneficial
Association Hospital

Kittling Co

Cle Elum, Washington

David Wheeler

DEC 3 1980

October, 1979

Office of Archaeology and Historic
Preservation, Olympia, WA

South elevation; showshed at emergency
entrance

3 of 6



Cle Elum/Roslyn Beneficial
Association Hospital
Cle Elum, Washington

Kittitas Co

David Wheeler
October, 1979

DEC 3 1980

Office of Archaeology and Historic
Preservation, Olympia, WA

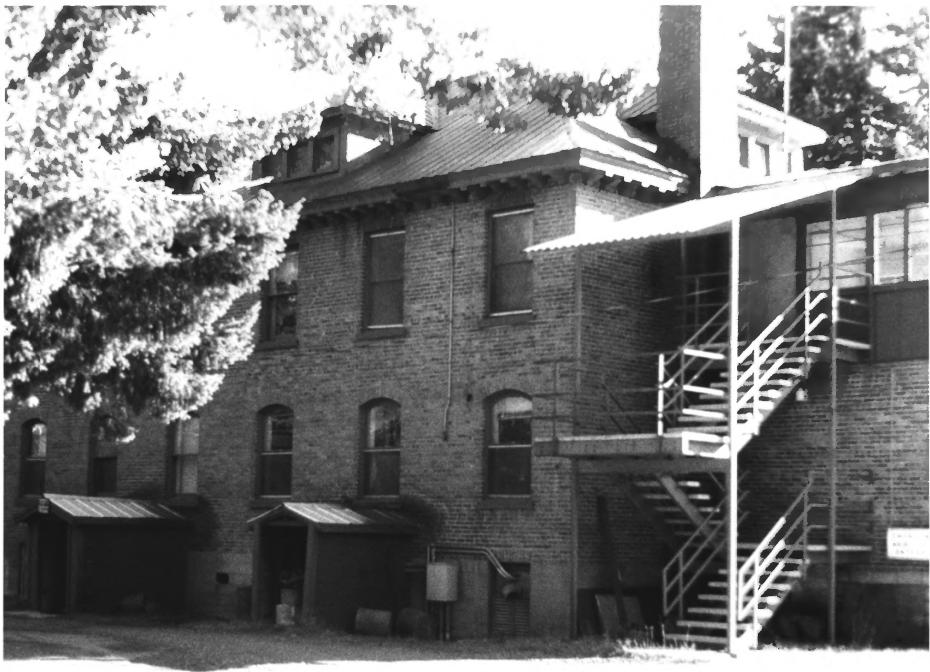
Southwest corner, operating room
wing at rear

4 of 6

SEP 2 2 1980

SEP 2 2 1980

SEP 2 2 1980



SEP 22 1980

REC. 3 1980

Cle Elum/Roslyn Beneficial
Association Hospital
Cle Elum, Washington

Kuttitas Co

David Wheeler
October, 1979

Office of Archaeology and Historic
Preservation, Olympia, WA

Northwest corner

5 of 6



Cle Elum/Roslyn Beneficial
Association Hospital
Cle Elum, Washington
David Wheeler
October, 1979
Office of Archaeology and Historic
Preservation, Olympia, WA

Kittitas Co

SEP 22 1980

DEC 3 1980

Detail of windows, dormer, and cornice
6 of 6