



1. Swanner House Williams, Roger Y, House
2. Orange County, Ca.
3. Ilse M. Byrnes
4. Feb. 2005
5. P.O. Box 1029
San Juan Capistrano, Ca
6. Southside of building
7. #1



- 1) Swanner House Williams, Roger, House
2. Grange County, CA
3. Ilse M. Byrnes
4. Feb. 2005
5. P.O. Box 1029
San Juan Capistrano, CA 92693
6. Front of house (East Side)
7. # 2



1. Swanner House Williams, Roger Y, House
2. Orange County, CA
3. Ilse M. Byrnes
4. Feb. 2005
5. P.O. Box 1029
San Juan Capistrano, CA 92693
6. Northside of building
7. # 3



1. Swanner House Williams, Roger, House
2. Orange County, CA
3. ILse M. Byrnes
4. Feb. 2005
5. P.O. Box 1029
San Juan Capistrano, CA 92693
6. Back porch on South side
7. # 5



1. Swanner House (Williams, Roger M., House
2. Orange County, Ca
3. Ilse M. Byrnes
4. Feb. 2005
5. P.O. Box 1029
San Juan Capistrano, Ca 92693
6. Back Porch, Triangular knee brace
7. #6



1. Swanner House (Williams, Roger Y, House
2. Orange County, CA
3. Ilse M. Byrnes
4. Feb. 2005
5. P.O. Box 1029
San Juan Capistrano, CA 92693
6. Original Water Tower and
Garage - South side of house
7. # 7



1. Swanee House WILLIAMS, Roger V, House
2. Orange County, Ca
3. Ilee M. Byrnes
4. Feb. 2005
5. P.O. Box 1029
San Juan Capistrano, Ca 92693
6. Front door / Vestibule
7. #9



1. Swanner House
2. Orange County, Ca
3. Ilse M. Byones
4. Feb 2005
5. P.O. Box 1029
San Juan Capistrano, Ca 92693
6. Dining room / Parlor
7. # 10



1. Swanne House
2. Orange County, Ca
3. Ilse M. Byrnes
4. Feb 2005
5. P.O. Box 1029
San Juan Capistrano, Ca 92693
6. East wall, Parlor
7. # 11



1. Swanner House
2. Orange County, Ca
3. Ilse M. Byrnes
4. Feb 2005
5. P.O. Box 1029
San Juan Capistrano, Ca 92693
6. Door at entrance to stairs
going to second floor
7. # 20



Williams, Roger Y, House

1. Swannes House
2. Orange County, Ca
3. Ilse M. Byrnes
4. Feb 2005
5. P.O. Box 1029
San Juan Capistrano
Ca 92693
6. Original Glass door knob
7. # 23



Williams, Roger Y, House

1. Swahner House
2. Orange County, Ca
3. unknown
4. ca. 1920
5. Joan Swahner
3501 Copperas Cove
Wichita Falls, TX 76310
6. Roger Y. Williams in front of
Swahner House
7. # 26



Williams, Roger Y, House

1. Swanier House

2. Orange County, Ca

3. Unknown

4. Unknown

5. Joan Swahner

3501 Copperas Cove

Wichita Falls, TX 76310

6. Roger Y. Williams

7. # 27



Williams, Roger Y. House

1. Swanner House

2. Orange County, Ca

3. Unknown

4. Unknown

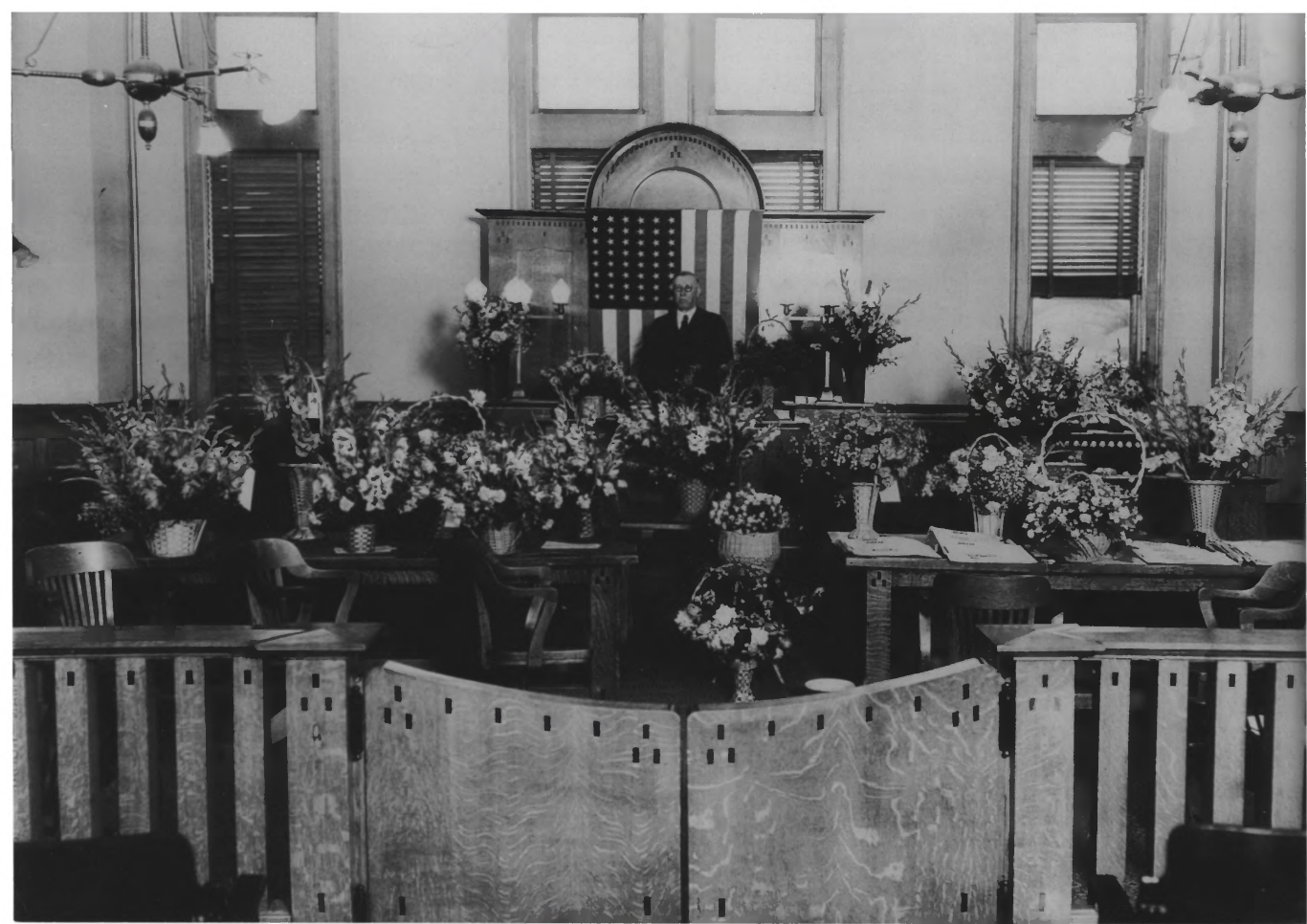
5. Jean Swanner

3501 Copperas Cove

Wichita Falls, TX 76310

6. Wife of Roger Y. Williams

7. # 28



Williams, Rosery, House

1. Swanner House

2. Orange County, Ca

3. Unknown

4. ca 1920

5. Joan Swanner

3501 Copperas Cove

Wichita Falls, TX 76310

6. Roger Y. Williams

Superior Court, Santa Ana, Ca.

7. #30