



LADD'S ADDITION HISTORIC DISTRICT

PORTLAND, MULTNOMAH COUNTY, OREGON

APARTMENTS AND OFFICE BUILDING ON BLOCK 19

1512 SE 16TH; 1620-1650 SE HAWTHORNE

1 OF 29

LOOKING SOUTHEAST



LADD'S ADDITION HISTORIC DISTRICT, PORTLAND, MULTNOMAH COUNTY, OREGON
PORTLAND'S EAST. SIDE, HISTORIC VIEW, 1903.

3 OF 29
AERIAL LOOKING EAST

Hendricksen 1903
Aerial Roll

Oregon Historical Society
Neg. # ORHI 25592
Reference Use Only





LADO'S ADDITION HISTORIC DISTRICT
PORTLAND, MULTNOMAH COUNTY, OREGON

1905 HOUSE BY R. L. CATE

1508 SE POPLAR AVE

4 OF 29

LOOKING EAST



LADD'S ADDITION HISTORIC DISTRICT, PORTLAND, MULTNOMAH COUNTY, OREGON

CENTRAL PARK (0-01), C. 1915

5 OF 29

LOOKING SOUTH

305

ORDER # 010068

LOC/ORIG: 0319-P-235

LOCATION: PORTLAND

PHOTOGRAPHER: COLUMBIA COMMERCIAL STUDI

~~IIIE~~-CENTRAL PARK IN LADD'S ADDITION,
PORTLAND, OREGON.

Oregon Historical Society
Reference Use Only



LADD'S ADDITION HISTORIC DISTRICT
PORTLAND, MULTNOMAH COUNTY, OREGON

A.E. AND GAIL HOLCOMB HOUSE, BUILT 1910.
1990 SE MULBERRY AVE. (9-17), HISTORIC VIEW, C. 1915

6 OF 29

LOOKING EAST

Men on porch
c. 1915



Oregon Historical Society
neg. # ORHI 63002 File # 1678
Reference Use Only



LADD'S ADDITION HISTORIC DISTRICT
PORTLAND, MULTNOMAH COUNTY, OREGON

MYRT DONAHOE HOUSE, BUILT 1909
1628 SE LADD AVE. (13-24), HISTORIC VIEW C. 1915

7 OF 29
LOOKING EAST

This photoprint is issued for reference use only. It is not to be copied for resale. Permission for use in a publication, film or video production must be requested in writing from the Photographs Librarian.
Photographs Department
Oregon Historical Society
1230 SW Park Avenue
Portland, Oregon 97205

NEGATIVE NUMBER ORHI 80866

Ateyeha House on Ladd Avenue file #1670



LADD'S ADDITION HISTORIC DISTRICT
PORTLAND, MULTNOMAH COUNTY, OREGON

HOUSE BUILT BY THOMAS VIGARS, BUILT 1911
1734 SE LADD AVENUE (13-18) HISTORIC VIEW C. 1911

8 OF 29
LOOKING EAST

Oregon Historical Society
neg. # ORHI 63010 File # 1678
Reference Use Only



LADD'S ADDITION HISTORIC DISTRICT
PORTLAND, MULTNOMAH COUNTY, OREGON

FIRST ST. PHILIP NERI CHURCH, BUILT 1913
2406 SE 16TH AVENUE (30-0) HISTORIC VIEW C, 1913

9 OF 29

LOOKING NORTHEAST

Oregon Historical Society
Reference Use Only



LADD'S ADDITION HISTORIC DISTRICT

PORTLAND, MULTNOMAH COUNTY, OREGON

ROW OF CRAFTSMAN HOUSES FACING NORTH PARK

1729-1759 SE MAPLE

10 OF 29

LOOKING SOUTHWEST



LADD'S ADDITION HISTORIC DISTRICT
PORTLAND, MULTNOMAH COUNTY, OREGON
1930-1968 MULBERRY AVENUE, BUILT 1909-1912 (9-20-9-13)
HISTORIC VIEW, C. 1910

11 OF 29

LOOKING NORTH : this photoprint is issued for reference use
only. It is not to be copied for resale.
Permission for use in a publication, film
or video production must be requested in
writing from the Photographs Librarian.

Photographs Department
Oregon Historical Society
1230 SW Park Avenue
Portland, Oregon 97205

NEGATIVE NUMBER ORHI 63021

file # 1678

Fred Clausen on Ladd Avenue

ca. 1910



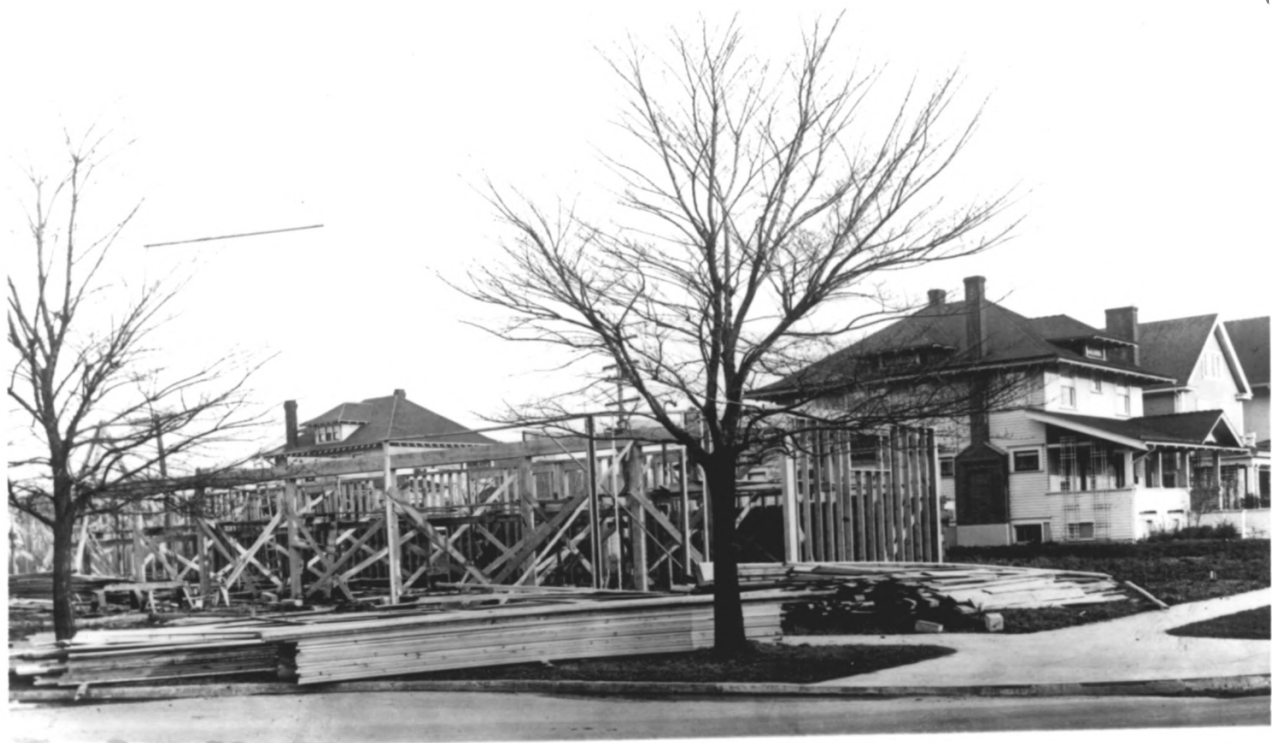
LADD'S ADDITION HISTORIC DISTRICT
PORTLAND, MULTNOMAH COUNTY, OREGON

TYPICAL 1920S RESIDENTIAL BUILDINGS FACING SOUTH PARK

2110-2136 SE TAMARACK

13 OF 29

LOOKING NORTHEAST



LADD'S ADDITION HISTORIC DISTRICT
PORTLAND, MULTNOMAH COUNTY, OREGON

LADD CIRCLE GROCERY UNDER CONSTRUCTION, 1923
1988-1996 SE LADD AVENUE (25-27)
HISTORIC VIEW, 1923.

14 OF 29

LOOKING SOUTHEAST

This photoprint is issued for reference use only. It is not to be copied for resale. Permission for use in a publication, film or video production must be requested in writing from the Photographs Librarian.

Photographs Department
Oregon Historical Society
1230 SW Park Avenue
Portland, Oregon 97205

NEGATIVE NUMBER ORHI 68576

file # 1670

Store Bldg.

Ladd's Addition



7up

LADD'S CHOICE
GROCERY

7up

CELEBRATION

7up

7up

LADD'S ADDITION HISTORIC DISTRICT
PORTLAND, MULTNOMAH COUNTY, OREGON

LADD CIRCLE STORE IN 1988

1988-1996 SE LADD

15 OF 29

LOOKING SOUTHEAST



LADD'S ADDITION HISTORIC DISTRICT
PORTLAND, MULTNOMAH COUNTY, OREGON

305

CREIGHTON APARTMENTS, BUILT 1924 (13-30)
1524-28 SE LADD AVENUE
HISTORIC VIEW, C. 1933

16 OF 29
LOOKING EAST

Oregon Historical Society
Reference Use Only



LADD'S ADDITION HISTORIC DISTRICT
PORTLAND, MULTNOMAH COUNTY, OREGON

HAWTHORNE COURT APARTMENTS, BUILT 1924. (19-4)
1650 S.E. HAWTHORNE BLVD.
HISTORIC VIEW, C. 1939

17 OF 29
LOOKING SOUTH

305

Oregon Historical Society
Reference Use Only



LADD'S ADDITION HISTORIC DISTRICT

PORTLAND, MULTNOMAH COUNTY, OREGON

SWEDENBORGIAN CHURCH, BUILT 1924

2037 S E SPRUCE

18 OF 29

LOOKING SOUTHWEST



LADD'S ADDITION HISTORIC DISTRICT
PORTLAND, MULTNOMAH COUNTY, OREGON

CONTRIBUTING AUXILIARY BUILDINGS

12-6A AND 12-6B

190F29

LOOKING SOUTH



LADD'S ADDITION HISTORIC DISTRICT
PORTLAND, MULTNOMAH COUNTY, OREGON

S. E. HAWTHORNE BOULEVARD IN 1929
HISTORIC VIEW, 1929

21 OF 29
LOOKING EAST

Portland
SE 12/Hawthorne

Oregon Historical Society
Neg. # PGE 130-78a File # 1673
Reference Use Only



LADD'S ADDITION HISTORIC DISTRICT
PORTLAND, MULTNOMAH COUNTY, OREGON
ORANGE AVENUE HOUSES FACING SOUTH PARK
2051-2155 SE ORANGE
22 OF 29
LOOKING NORTHWEST



LADO'S ADDITION HISTORIC DISTRICT
PORTLAND, MULTNOMAH COUNTY, OREGON

CENTRAL PARK IN 1988

23 OF 29

LOOKING SOUTHEAST



LADD'S ADDITION HISTORIC DISTRICT

PORTLAND, MULTNOMAH COUNTY, OREGON

20TH CENTURY COLONIAL DUPLEXES, BUILT 1923

1301-1315 SE HARRISON

24 OF 29

LOOKING NORTH



LADD'S ADDITION HISTORIC DISTRICT

PORTLAND, MULTNOMAH COUNTY, OREGON

IDENTICAL BUNGALOWS BY FRED CONKEY

2314-2328 SE 12TH AVENUE; 2290 SE SPRUCE

25 OF 29

LOOKING EAST



LADD'S ADDITION HISTORIC DISTRICT
PORTLAND, MULTNOMAH COUNTY, OREGON

NON-CONTRIBUTING GARAGE

#16-09

26 OF 29

LOOKING NORTH EAST



LADD'S ADDITION HISTORIC DISTRICT
PORTLAND, MULTNOMAH COUNTY, OREGON

1949 HOUSE BUILT BY HENRY RIEHL

1431 SE PALM

27 OF 29

LOOKING NORTHWEST



LADD'S ADDITION HISTORIC DISTRICT
PORTLAND, MULTNOMAH COUNTY, OREGON

RENTAL DEVELOPMENT CORPORATION APARTMENTS: NON-CONTRIBUTING
1940 SE 12TH AVENUE

28 OF 29

LOOKING EAST



LADD'S ADDITION HISTORIC DISTRICT
PORTLAND, MULTNOMAH COUNTY, OREGON

RESIDENCES ON SE 20TH AVENUE

2039-2117 SE 20TH AVENUE

29 OF 29

LOOKING NORTHWEST