



Marshall-wells warehouse # 2 (1910)  
1420 N.W. Lovejoy St.  
Portland, Multnomah County, Oregon

Northwest Heritage, 1988  
P.O. Box 1871  
Portland, Ore. 97207

1 of 13

East elevation



WAREHOUSE  
222 3841



PETER HENRI

Marshall-wells warehouse #2 (1910)  
1420 N.W. Lovejoy St.  
Portland, Multnomah County, Oregon

Northwest Heritage, 1988  
P.O. Box 1871  
Portland, Ore. 97207

2 of 13  
South Elevation



**WAREHOUSE**  
• Design • Shipping • Packing  
• Storage • Distribution • Warehousing  
• 222-3847

*Big & Picky*

**ADDITIONAL  
PARKING**

INDUSTRIAL LOT OFFERING  
ON U.S. HIGHWAY

Marshall-Wells Warehouse # 2 (1910)  
1420 N.W. Lovejoy St.  
Portland, Multnomah County, Oregon

Northwest Heritage, 1988  
P.O. Box 1871  
Portland, Ore. 97207

3 of 13

West Elevation



HOME FASHIONS  
FACTORY CHIEF

Marshall-Wells Warehouse #2 (1910)  
1420 N.W. Lovejoy St.  
Portland, Multnomah County, Oregon

Northwest Heritage  
P.O. Box 1871  
Portland, Ore. 97207

4 of 13  
Northeast corner





Marshall-wells Warehouse # 2 (1910)  
1420 N. W. Lovejoy St.  
Portland, Multnomah County, Oregon

Northwest Heritage, 1988  
P.O. Box 1871  
Portland, Ore. 97207

5 of 13  
North Elevation



Marshall-Wells Warehouse # 2, (1910)  
1420 N.W. Lovejoy St.  
Portland, Multnomah County, Oregon

Northwest Heritage, 1988  
P.O. Box 1871  
Portland, Ore. 97207

6 of 13  
First Floor column

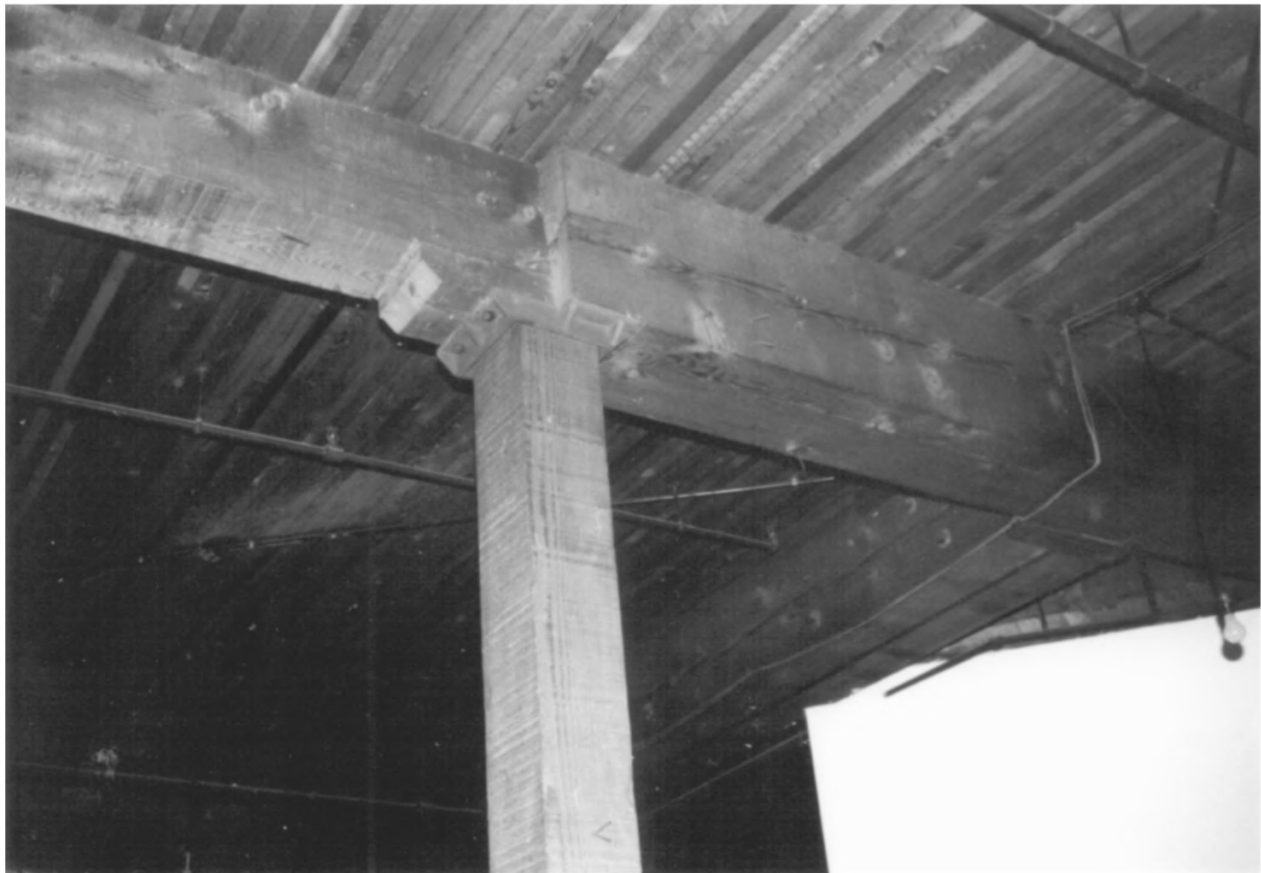


Marshall-Well's Warehouse #2 (1910)  
1420 N.W. Lovejoy St.  
Portland, Multnomah County, Oregon

Northwest Heritage, 1988  
P.O. Box 1871  
Portland, Ore. 97207

7 of 13

Roof looking Northeast  
Water Tower and  
elevator shaft



Marshall-Wells Warehouse # 2 (1910)  
1420 N.W. Lovejoy St.  
Portland, Multnomah County, Oregon

Northwest Heritage, 1988  
P.O. Box 1871  
Portland, Ore. 97207

8 of 13  
seventh floor Column





Marshall-Wells Warehouse #2 (1910)  
1420 N.W. Lovejoy St.  
Portland, Multnomah County, Oregon

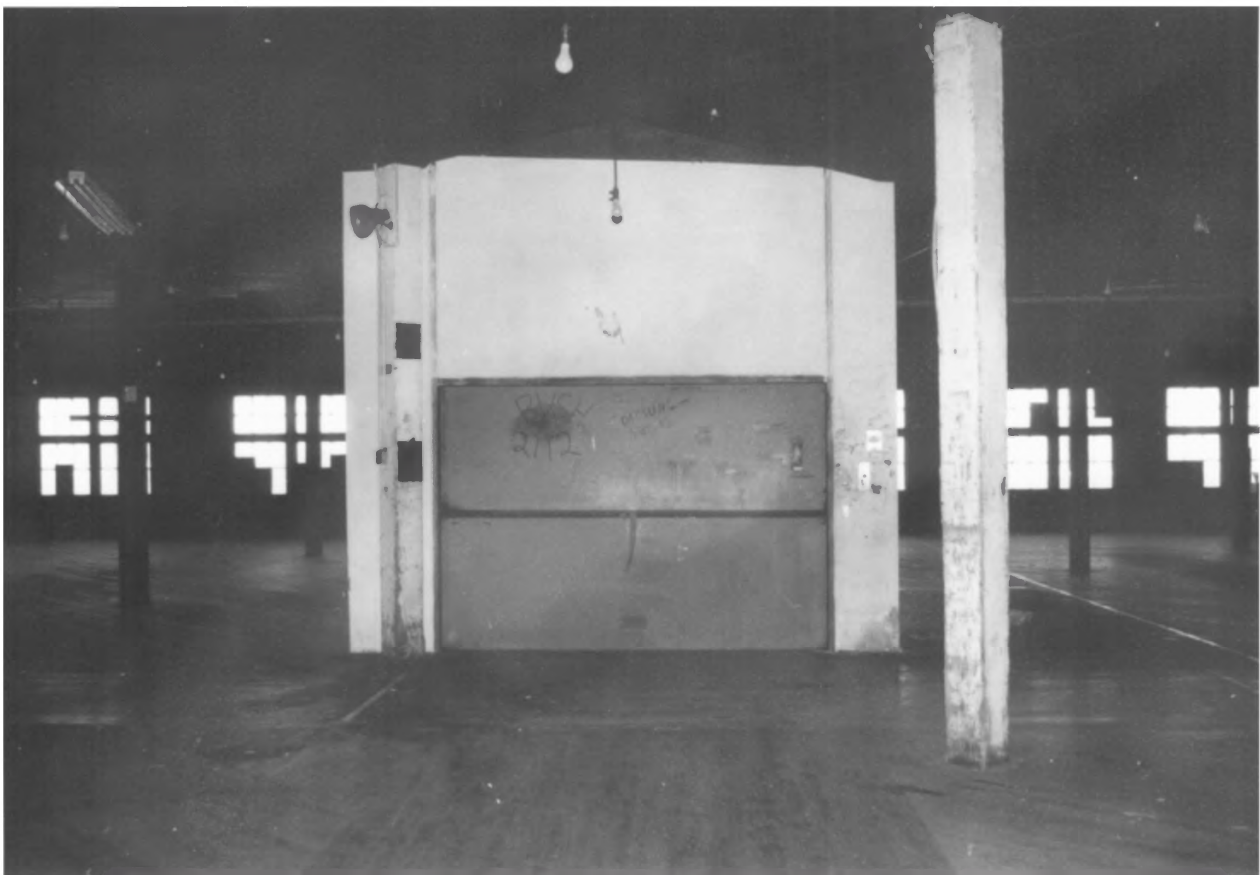
Northwest Heritage, 1988

P.O. Box 1871

Portland, Ore. 97203

9 of 13

Seventh Floor Stairs



Marshall-wells Warehouse #2 (1910)  
1420 N.W. Lovejoy St.  
Portland, Multnomah County, Oregon

Northwest Heritage, 1988  
P.O. Box 1871  
Portland, Oregon 97207

10 of 13  
Seventh Floor  
Elevator Shaft



Marshall-wells warehouse # 2 (1910)  
1420 N.W. Lovejoy St.  
Portland, Multnomah County, Oregon

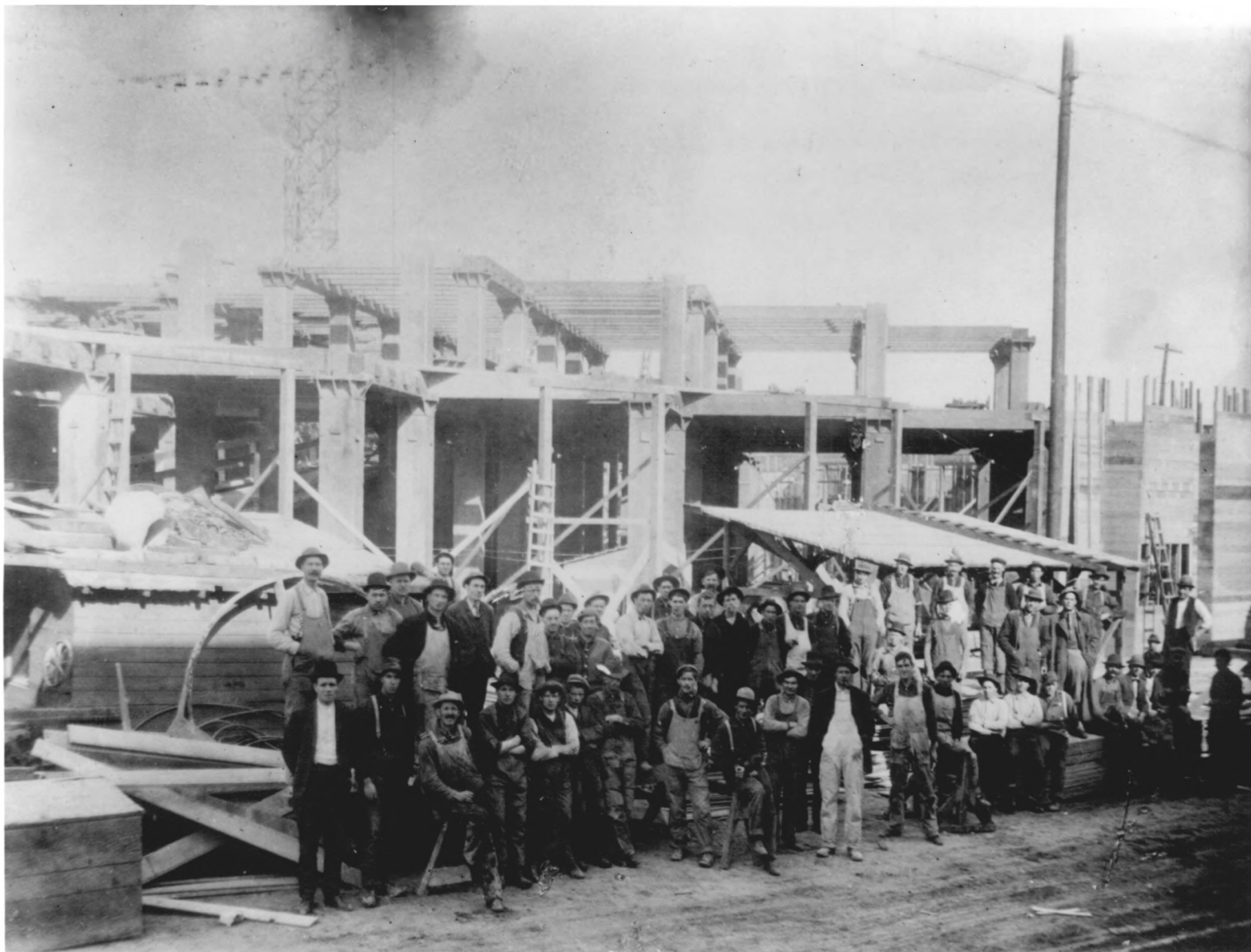
Northwest Heritage, 1988

P.O. Box 1871

Portland, Ore. 97207

11 of 13

Fourth Floor Column



Marshall-wells Warehouse # 2 (1910)  
1420 N. W. Lovejoy st.  
Portland, Multnomah County, Oregon

Historic View about 1910  
Oregon Historical Society Collection

1230 S.W. Park 97205  
Portland, Ore.

12 of 13

This photoprint is issued for reference use  
only. It is not to be copied for resale.  
Permission for use in a publication, film  
or video production must be requested  
writing from the Photographs Department

Photographs Department  
Oregon Historical Society  
1230 SW Park Avenue  
Portland, Oregon 97205

NEGATIVE NUMBER OrHi 68561

file # 1734

Marshall-Wells Warehouse

Between 14<sup>th</sup> & 16<sup>th</sup>, Kearney & Lovejoy

c. 1910

GBQ



PORTLAND VAN & STORAGE CO.  
FIRE PROOF  
**STORAGE**  
MOVING · PACKING · SHIPPING  
OFFICE - WAREHOUSE 15<sup>TH</sup> & KEARNEY STS.

PORTLAND VAN & STORAGE CO.  
FIRE PROOF STORAGE

PORTLAND VAN & STORAGE CO.  
MOVING · PACKING · SHIPPING

PORTLAND VAN & STORAGE CO.  
MOVING · PACKING · SHIPPING

PORTLAND VAN & STORAGE CO.  
MOVING · PACKING · SHIPPING



Marshall-wells warehouse #2 (1910)  
1420 N.W. Lovejoy St.

Portland, Multnomah County, Oregon

Historic view, undated

Oregon Historical Society Collection

1230 S.W. Park

Portland, Ore.

13 of 13

This photoprint is issued for reference use only. It is not to be copied for resale. Permission for use in a publication, film or video production must be requested in writing from the Photographs Librarian.

Photographs Department  
Oregon Historical Society  
1230 SW Park Avenue  
Portland, Oregon 97205

NEGATIVE NUMBER GI 10840

file # 1737-B

Portland Van & Storage Co.  
w/trucks in front