

# Death Valley Ranch (Scotty's Castle) Site Maps and Floor Plans

Death Valley Ranch has two building complexes:

Upper Grapevine Ranch – more commonly known as Scotty's Castle

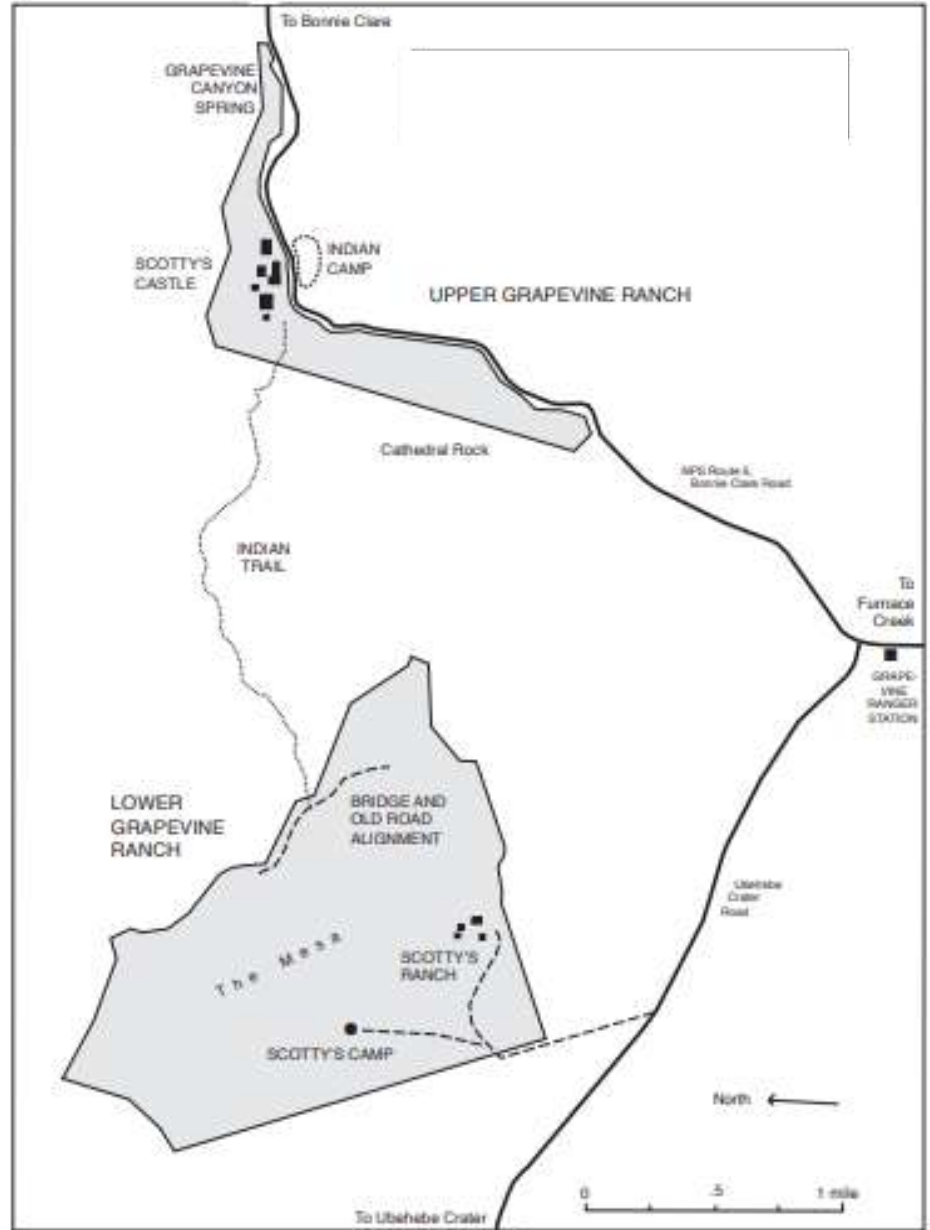
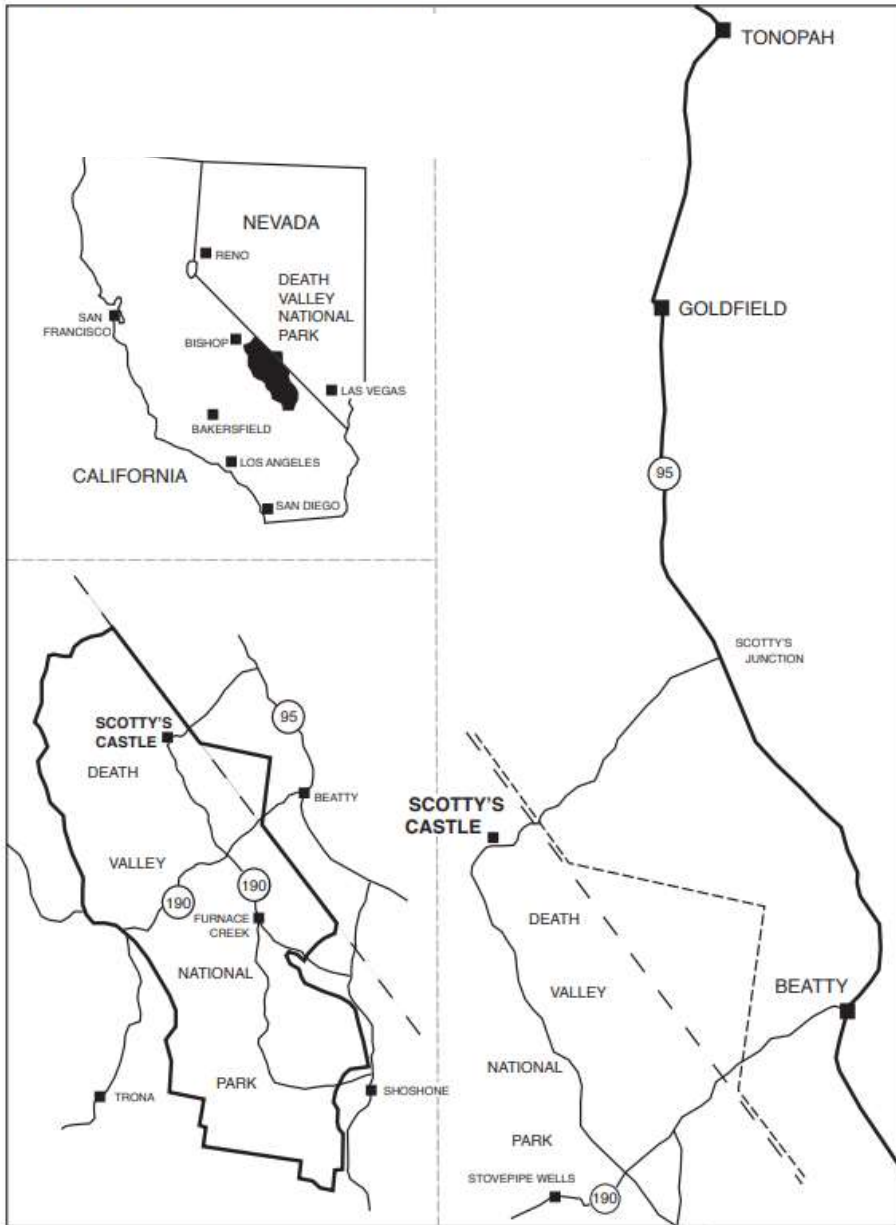
Lower Grapevine Ranch – more commonly known as Scotty's Ranch

Hidden in the green oasis of Grapevine Canyon in far northern Death Valley, the Death Valley Ranch, or Scotty's Castle as it is more commonly known, is a window into the life and times of the Roaring '20s and Depression '30s. It was and is an engineer's dream home, a wealthy matron's vacation home and a man-of-mystery's hideout and getaway.

Walter Edward Perry Scott, Death Valley Scotty, convinced everyone that he had built the castle with money from his rich secret mines in the area. Albert M. Johnson, a Chicago millionaire and investor in Scotty's fake mine, actually built the house as a vacation getaway for himself and his wife Bessie. Scotty was the mystery, the cowboy, and the entertainer, but he was also a friend. Albert was the brains and the money. They were two men as different as night and day, from different worlds and with different visions - who shared a dream.

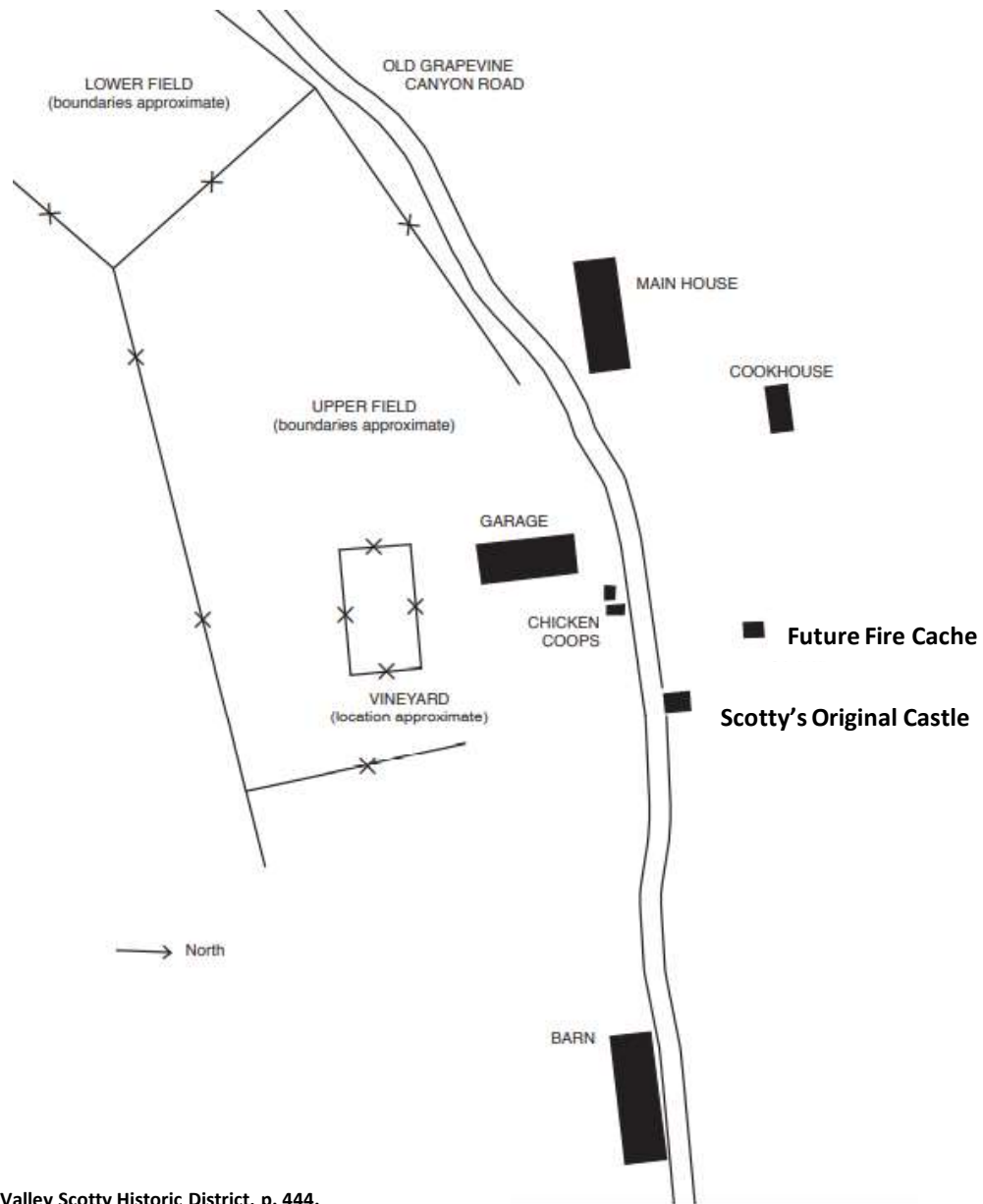
After falling in love with the climate, landscape, and isolation of the desert, Albert M. Johnson set to work purchasing a number of Death Valley properties from 1915 to 1917. Among these properties was the Steininger Ranch in Grapevine Canyon. The property, renamed as Death Valley Ranch, have two building complexes. Upper Grapevine Ranch is where Johnson first built practical concrete box structures. Lower Grapevine Ranch is where Scotty resided. Over the next decade the modest buildings at Upper Grapevine Ranch evolved into the vibrant and elaborate Scotty's Castle. The Castle's remodel was designed by Charles Alexander MacNeilledge and inspired by California's love of Spanish architecture. Building Superintendent, Mat Roy Thompson carried out MacNeilledge's vision on the ground.

Names of property and buildings change some through time. These site maps and floor plans are labeled with the same names used in the NPGallery, Death Valley National Park, Scotty's Castle Historic Photograph Collection.



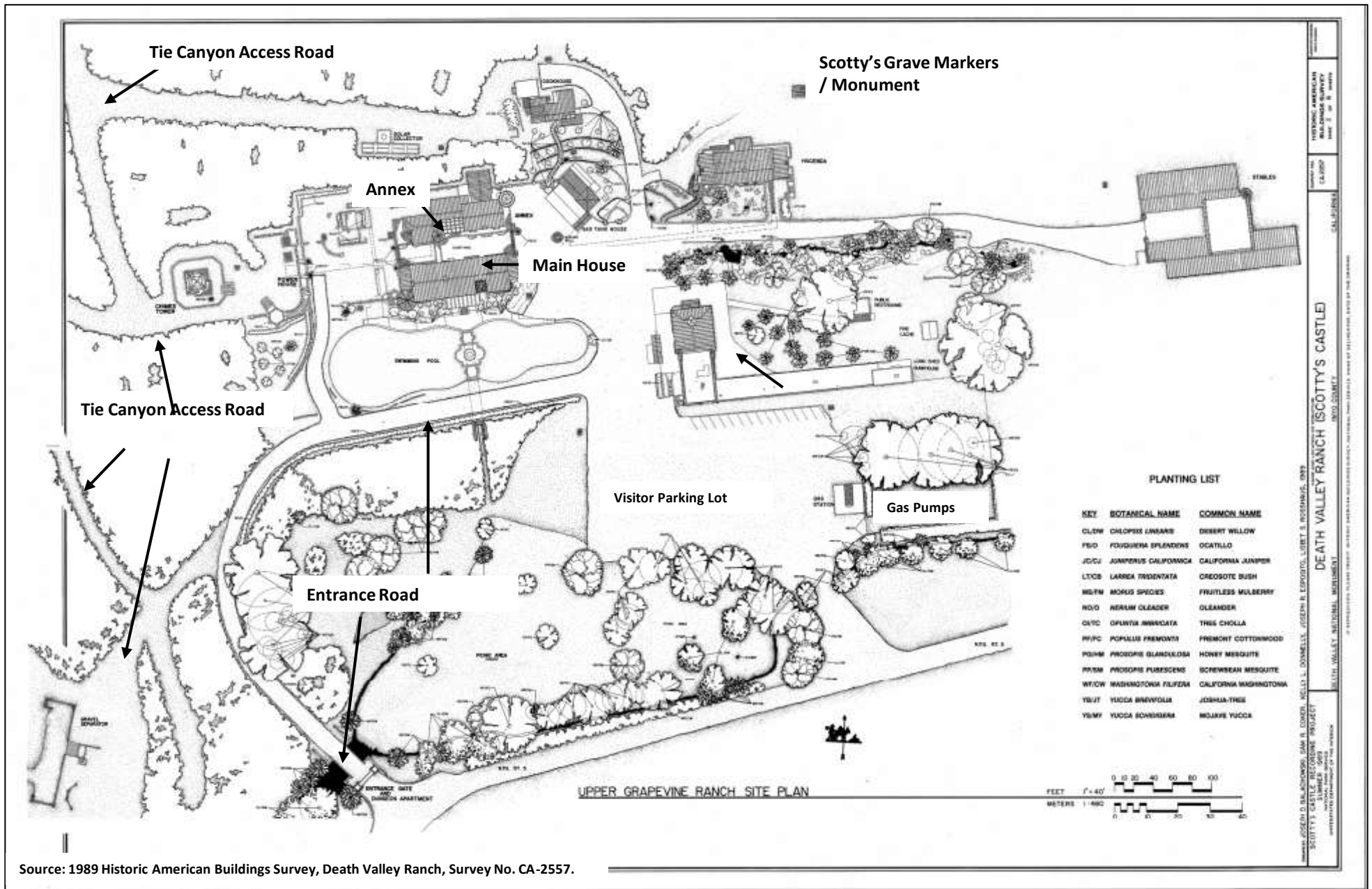
Source: 2009 Historic Resource Study, Death Valley Scotty Historic District, p. 441, 443.

# Upper Grapevine Ranch – 1st construction phase 1922-1925



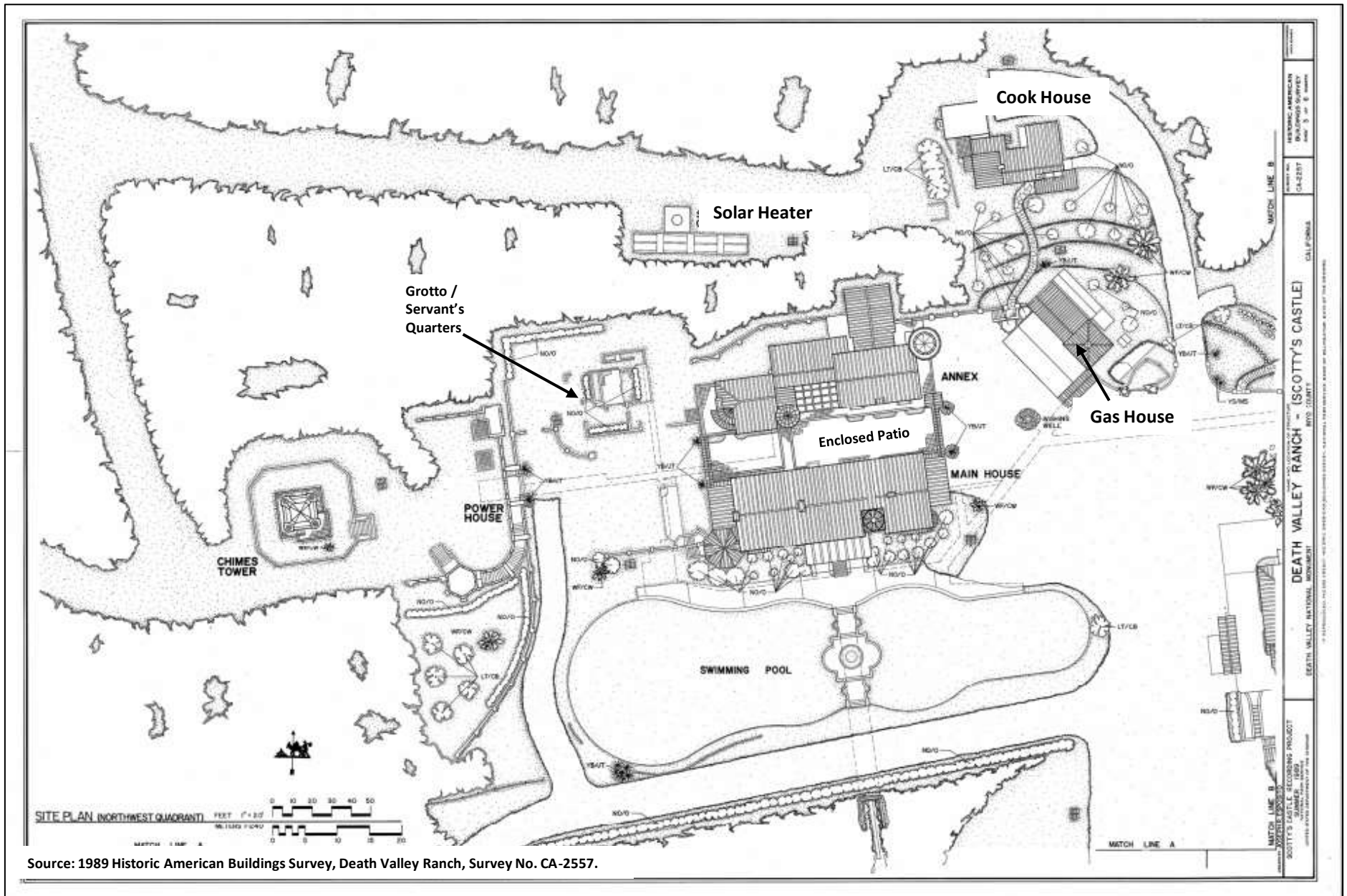
Source: 2009 Historic Resource Study, Death Valley Scotty Historic District, p. 444.

# Upper Grapevine Ranch (Scotty's Castle)



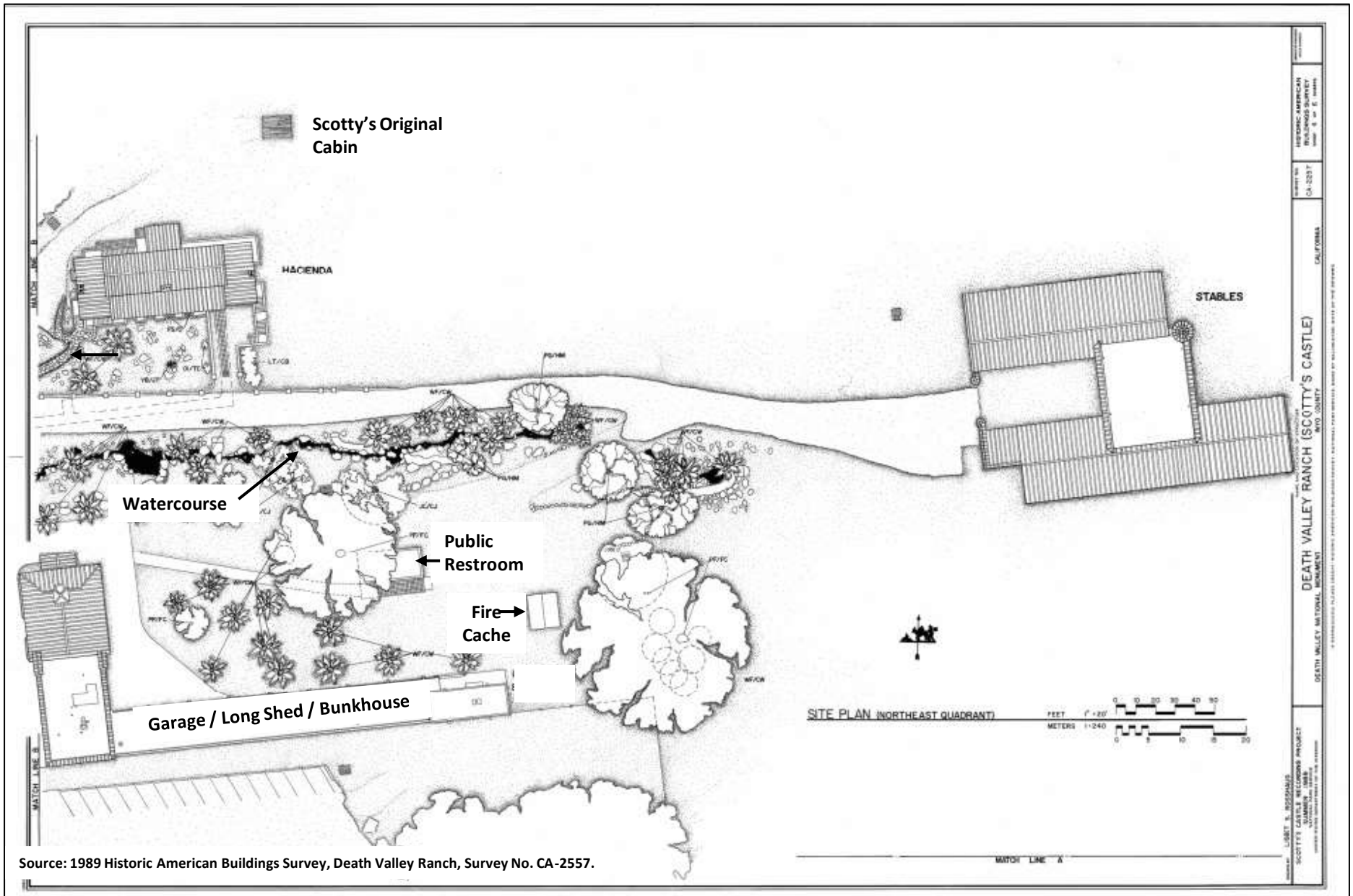
Source: 1989 Historic American Buildings Survey, Death Valley Ranch, Survey No. CA-2557.

# Upper Grapevine Ranch (Scotty's Castle)



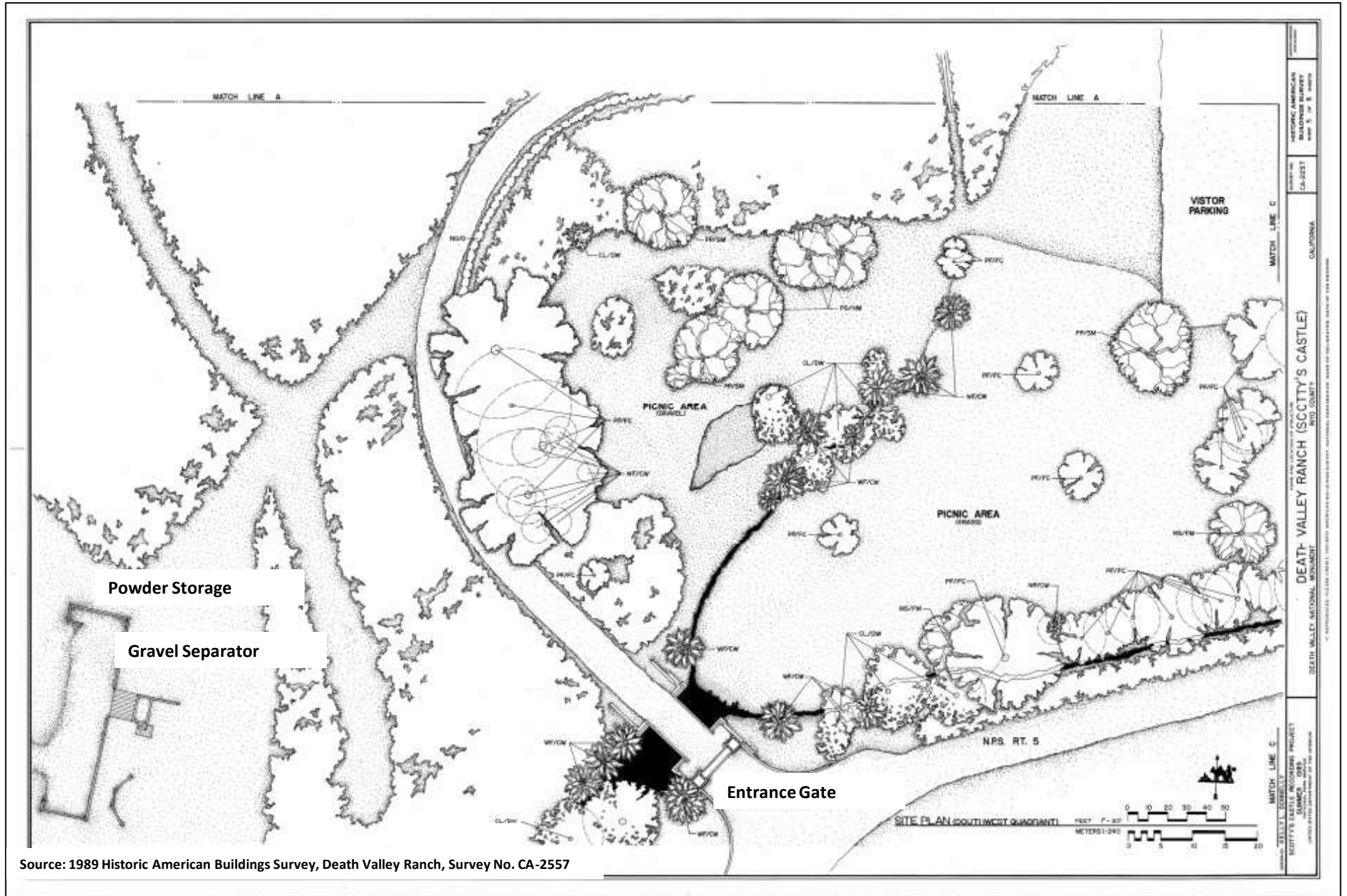
Source: 1989 Historic American Buildings Survey, Death Valley Ranch, Survey No. CA-2557.

# Upper Grapevine Ranch (Scotty's Castle)



Source: 1989 Historic American Buildings Survey, Death Valley Ranch, Survey No. CA-2557.

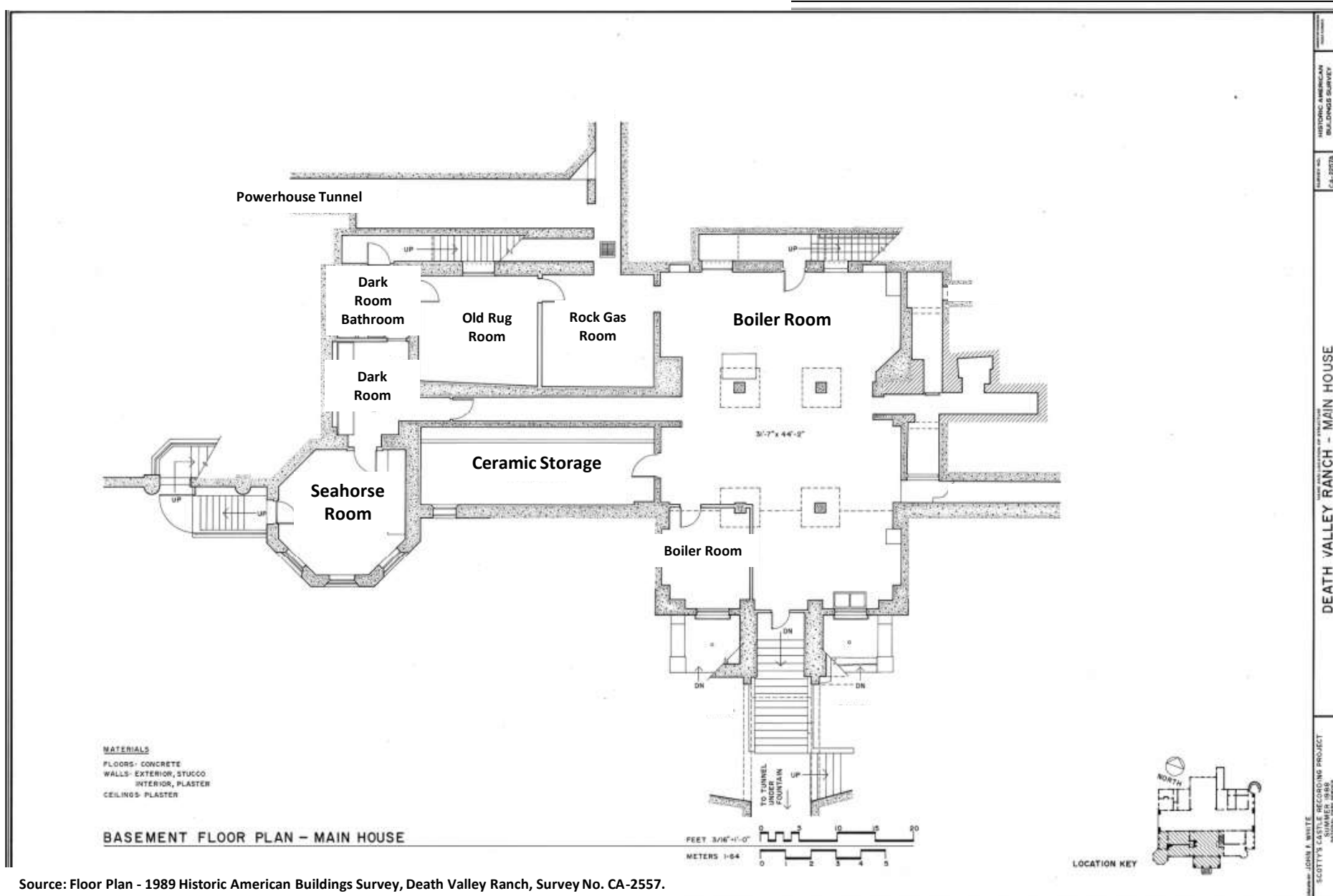
# Upper Grapevine Ranch (Scotty's Castle)



Source: 1989 Historic American Buildings Survey, Death Valley Ranch, Survey No. CA-2557

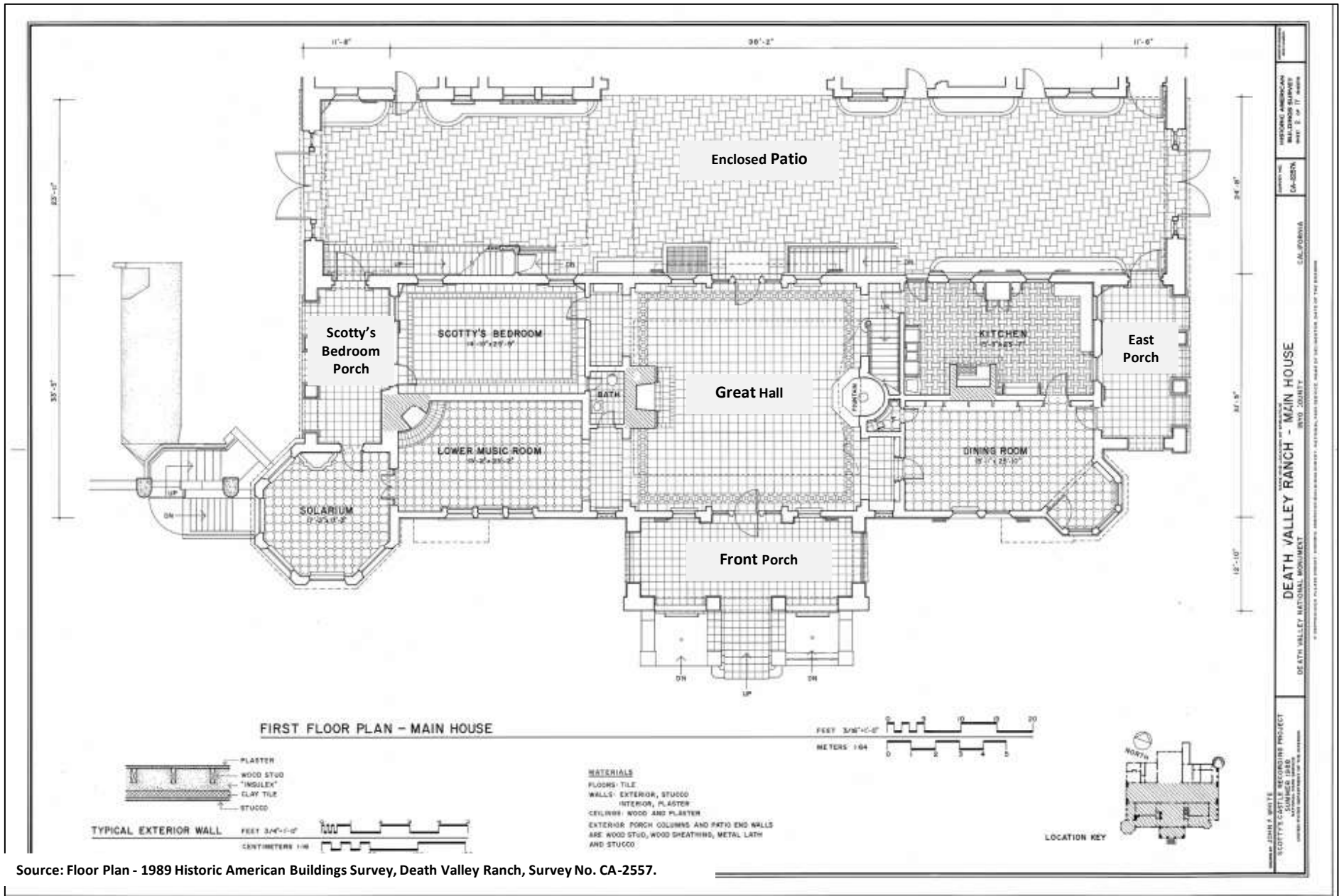


# Scotty's Castle Main House - Basement



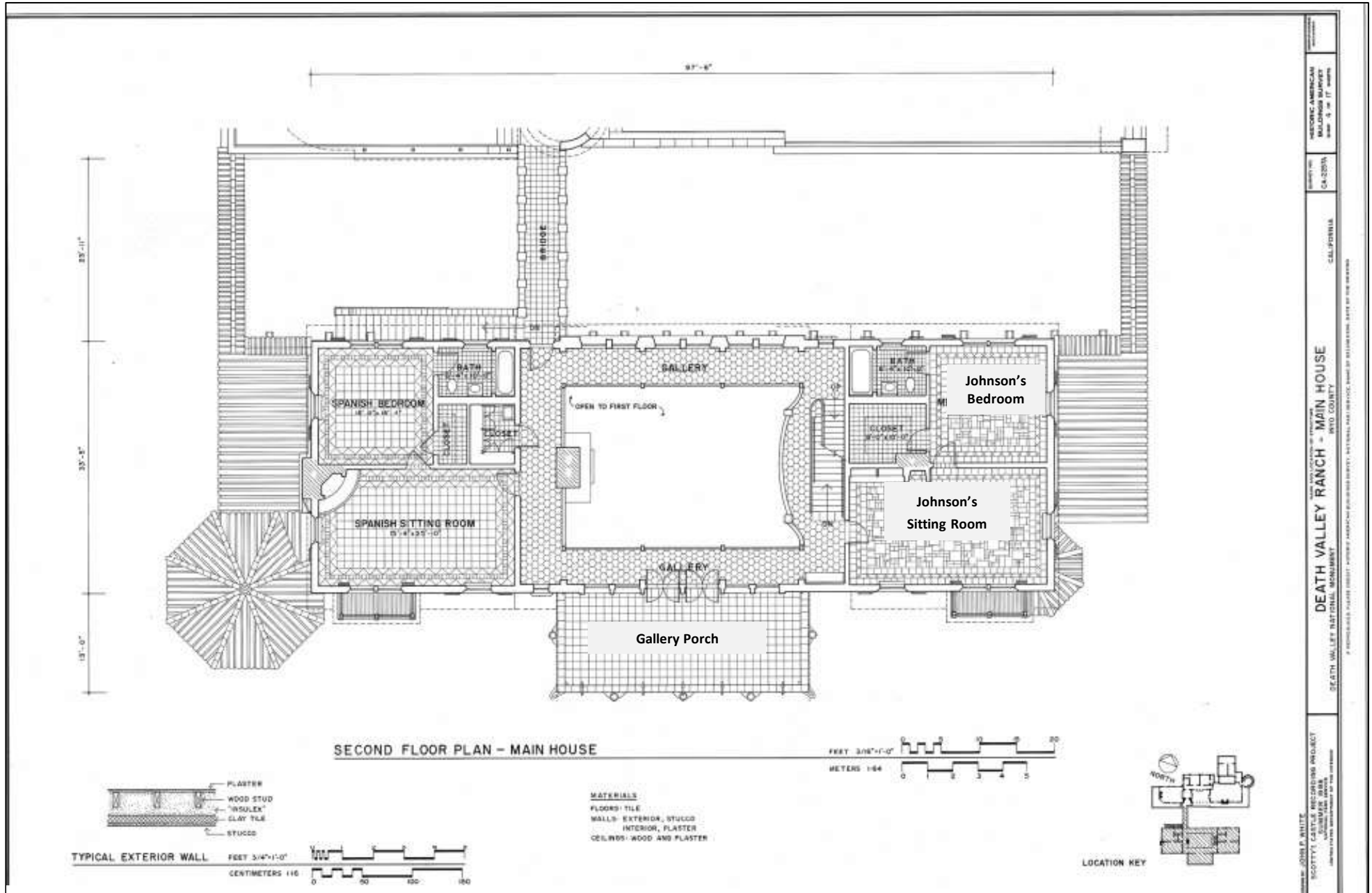
Source: Floor Plan - 1989 Historic American Buildings Survey, Death Valley Ranch, Survey No. CA-2557.

# Scotty's Castle Main House – First Floor



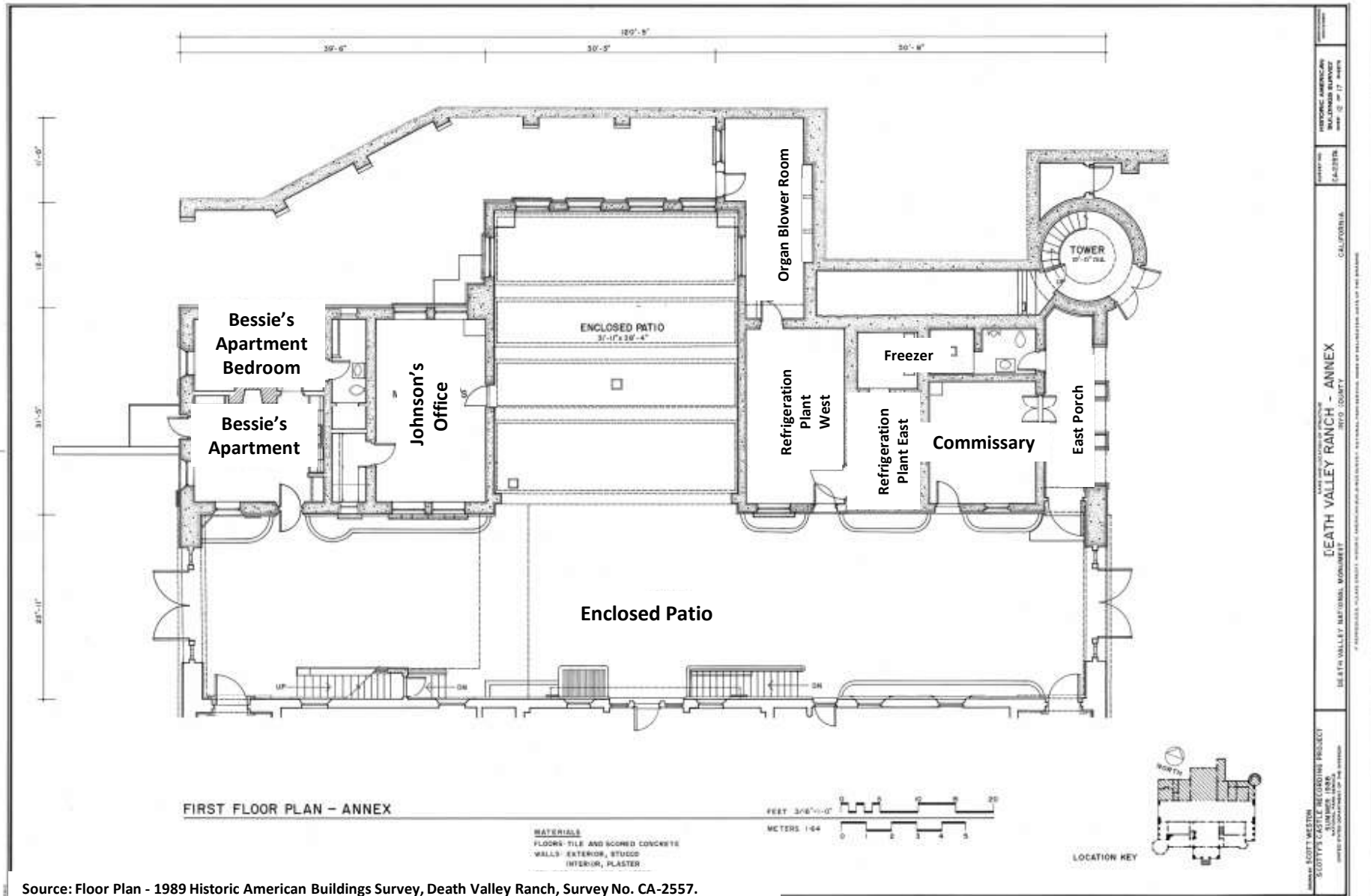
Source: Floor Plan - 1989 Historic American Buildings Survey, Death Valley Ranch, Survey No. CA-2557.

# Scotty's Castle Main House – Second Floor



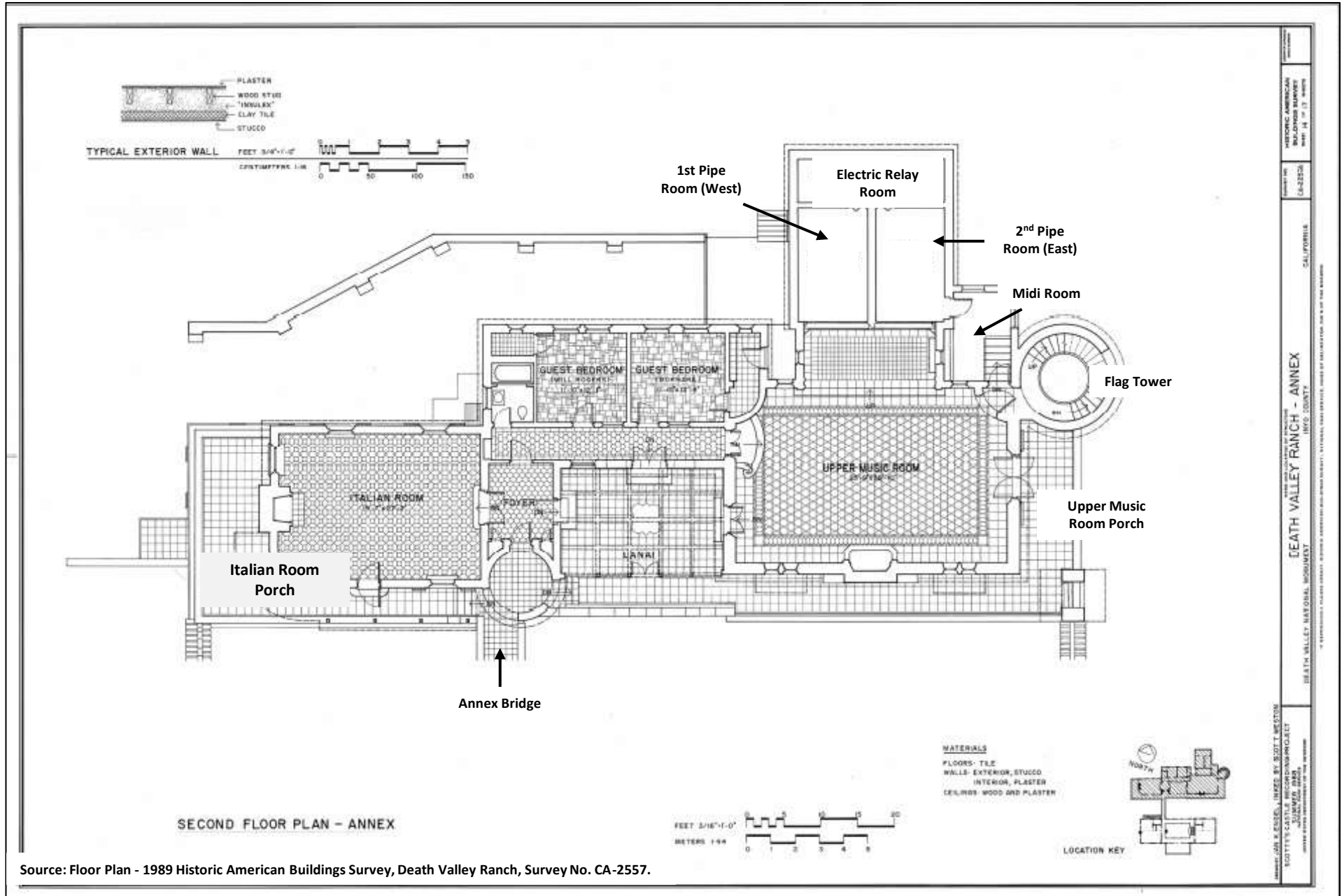
Source: Floor Plan - 1989 Historic American Buildings Survey, Death Valley Ranch, Survey No. CA-2557.

# Scotty's Castle Annex – First Floor



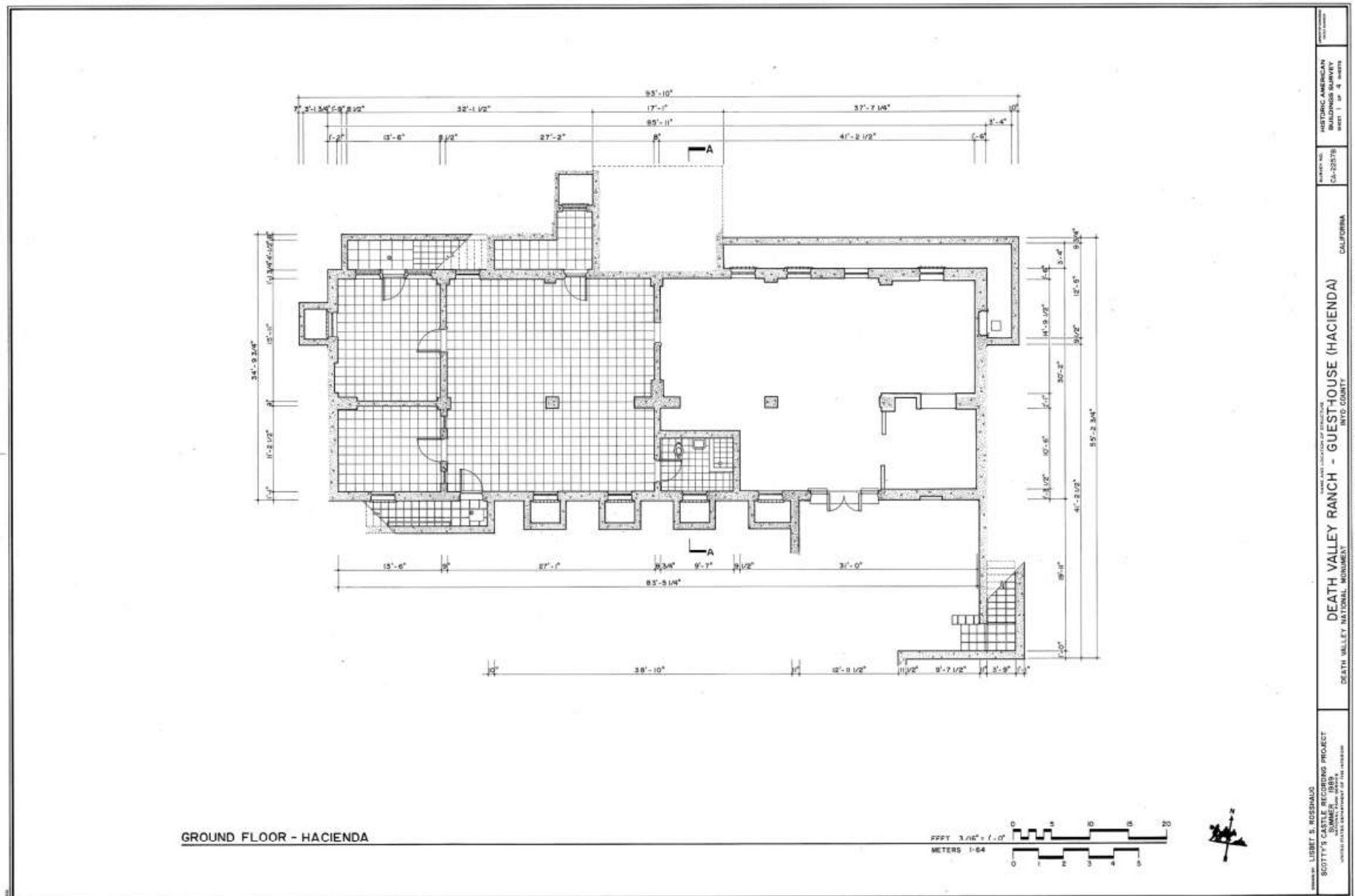
Source: Floor Plan - 1989 Historic American Buildings Survey, Death Valley Ranch, Survey No. CA-2557.

# Scotty's Castle Annex – Second Floor



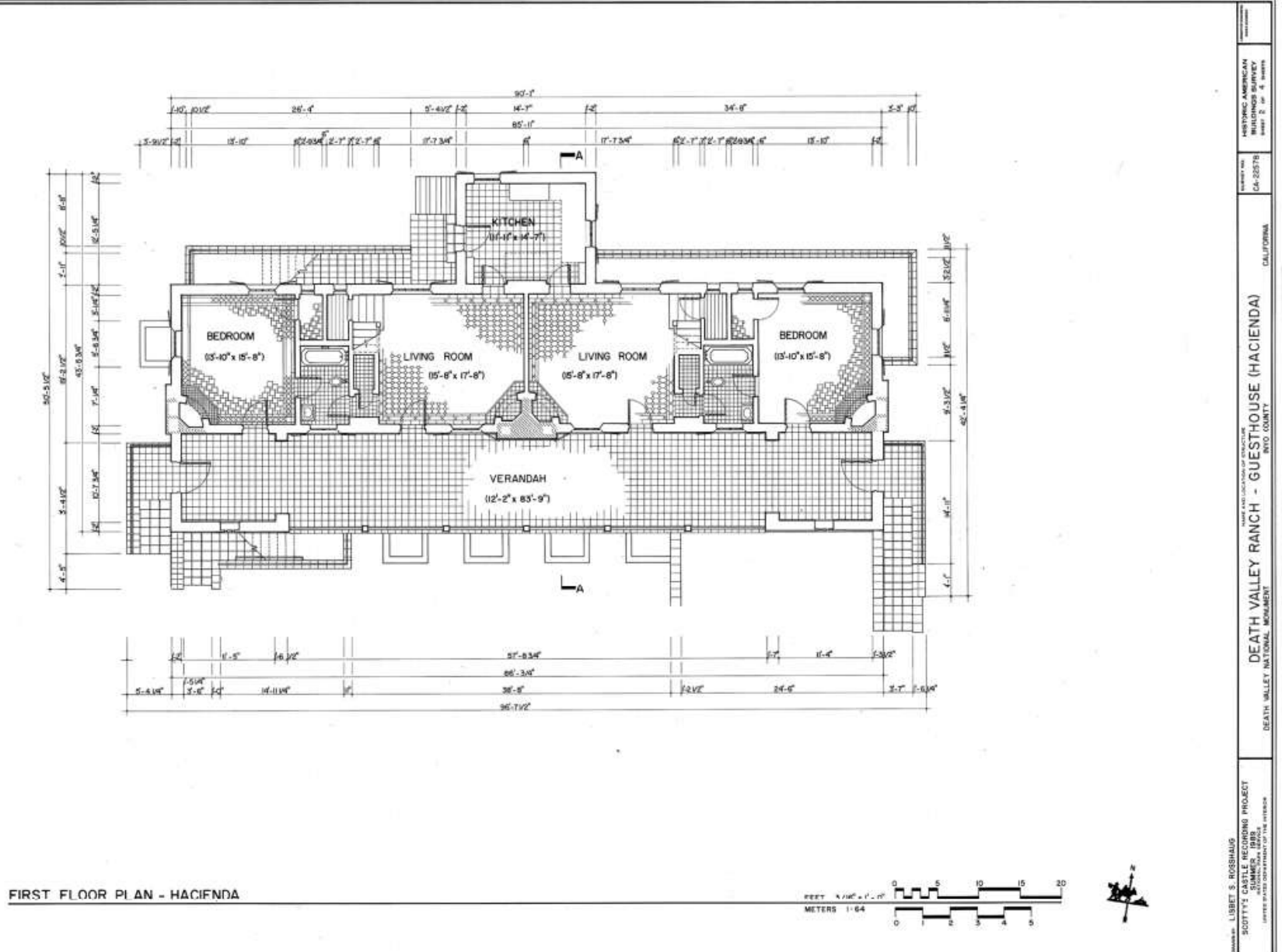
Source: Floor Plan - 1989 Historic American Buildings Survey, Death Valley Ranch, Survey No. CA-2557.

# Scotty's Castle Hacienda - Basement



Source: Floor Plan - 1989 Historic American Buildings Survey, Death Valley Ranch, Survey No. CA-2557.

# Scotty's Castle Hacienda – First Floor



LIBERT S. ROSSHAUG  
 SCOTTY'S CASTLE RECORDING PROJECT  
 DEATH VALLEY RANCH, DEATH VALLEY NATIONAL MONUMENT  
 DEATH VALLEY NATIONAL MONUMENT

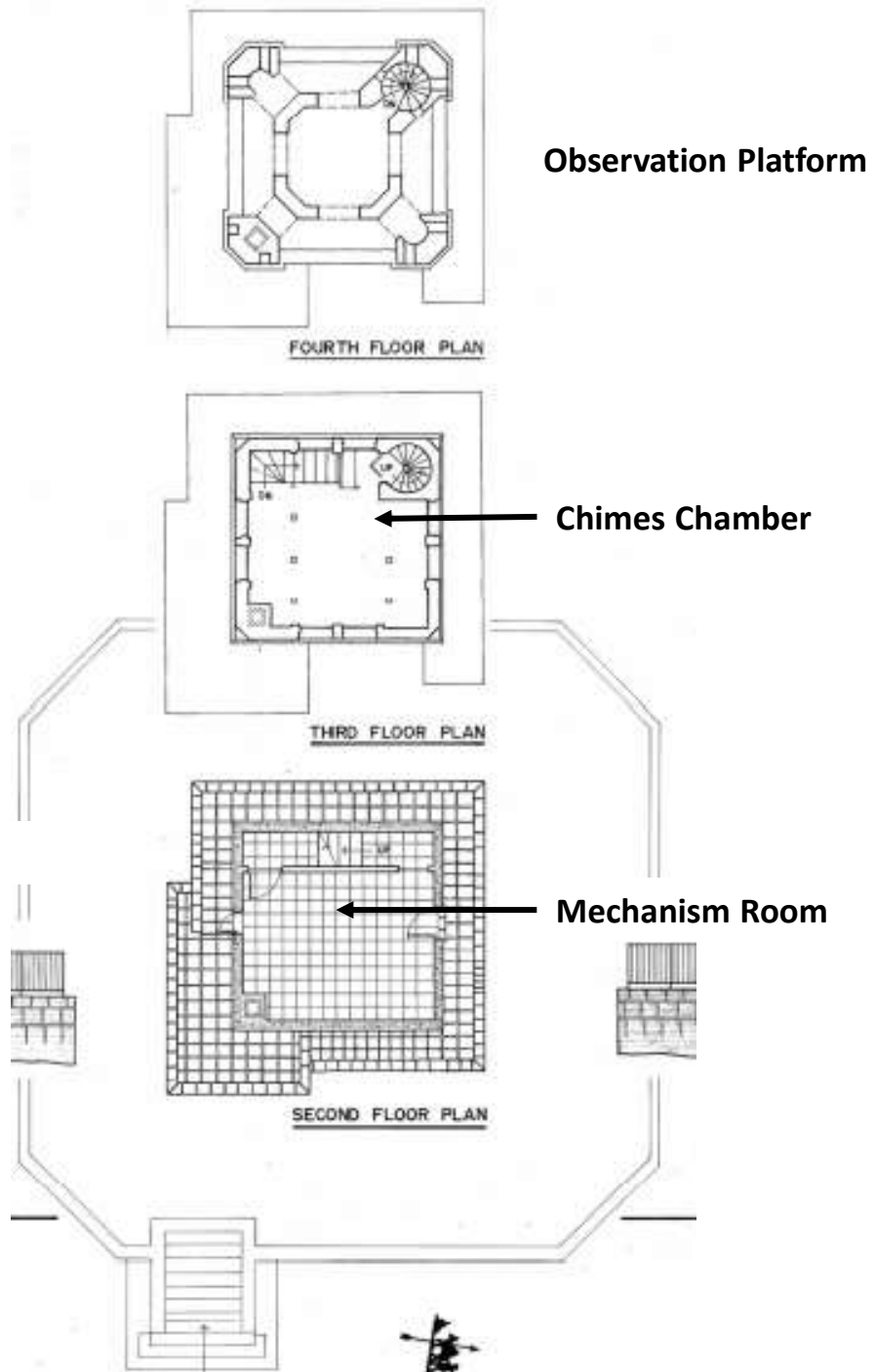
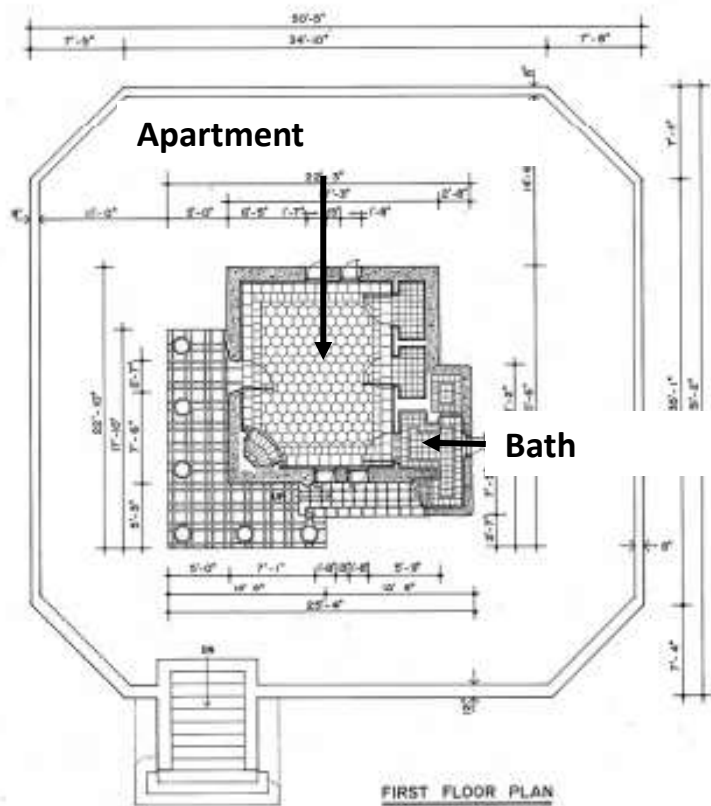
DATE AND LOCATION OF STRUCTURE  
 DEATH VALLEY RANCH - GUESTHOUSE (HACIENDA)  
 INYO COUNTY  
 CALIFORNIA

PROJECT NO.  
 CA-2557B

1989 HISTORIC AMERICAN BUILDINGS SURVEY  
 PART 2, OF 2, SHEETS

Source: Floor Plan - 1989 Historic American Buildings Survey, Death Valley Ranch, Survey No. CA-2557.

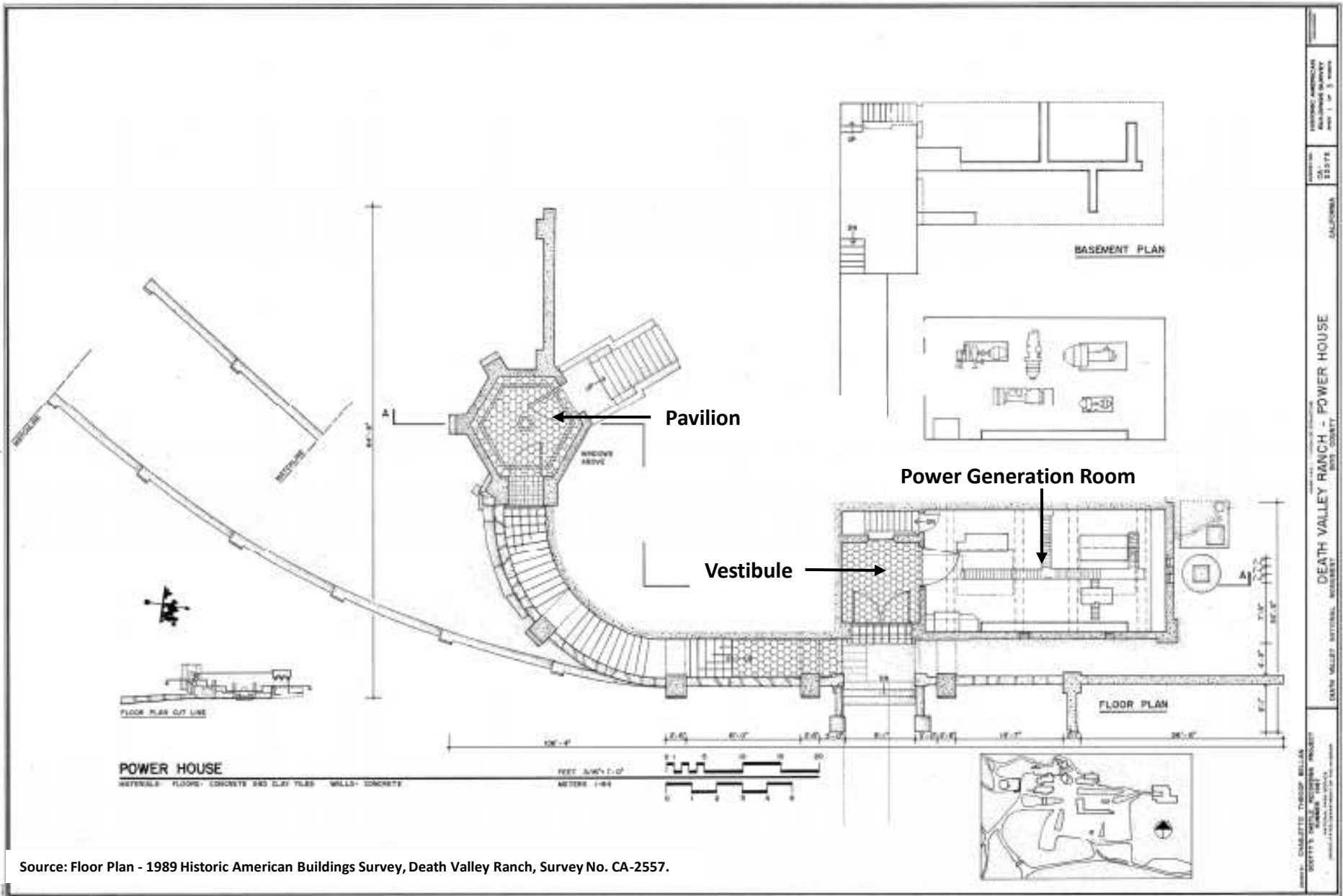
# Scotty's Castle Chimes Tower



Source: Floor Plan - August 2009 Historic Structures Report  
 Death Valley Scotty Historic District, page 51 and 53.

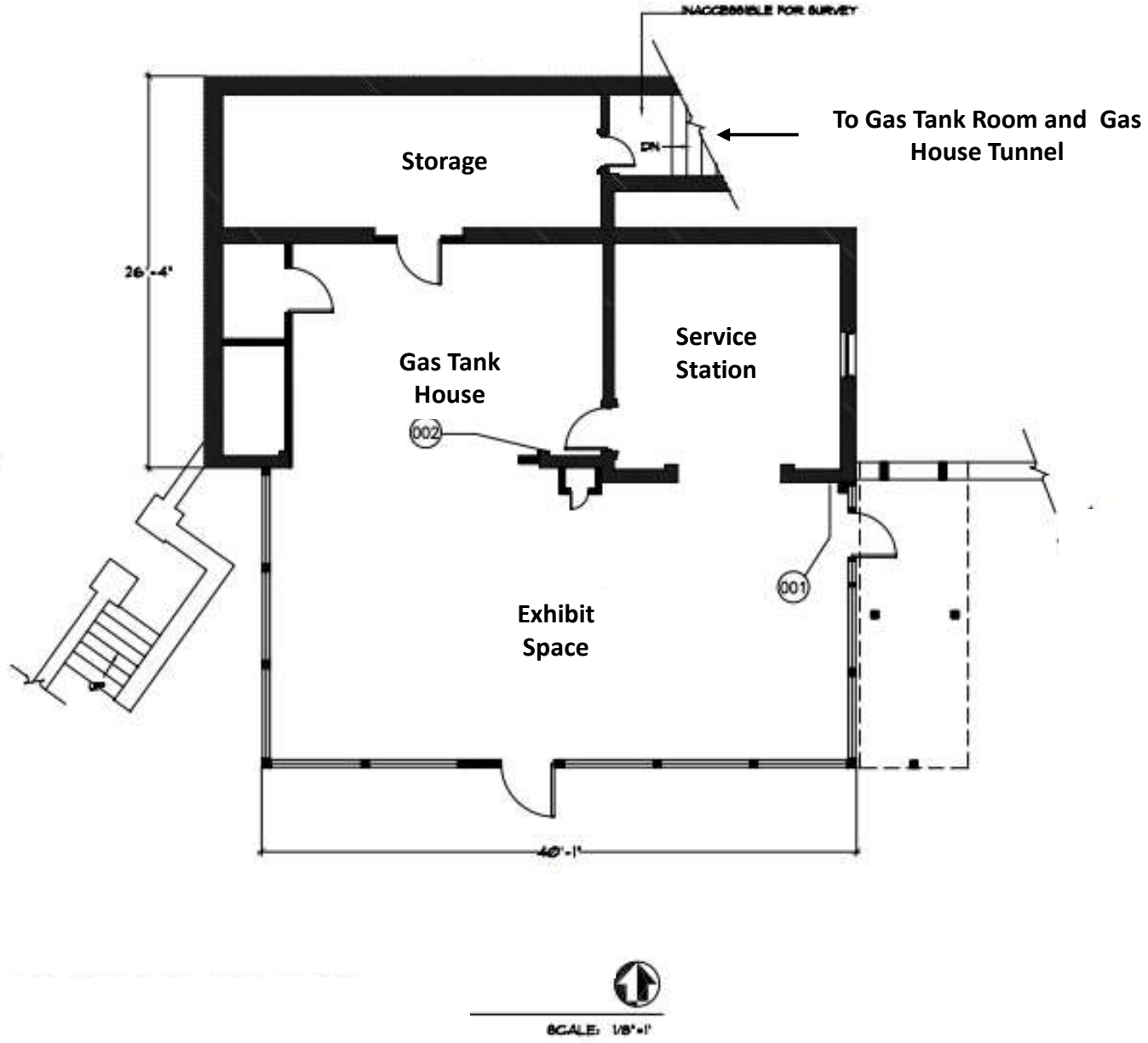


# Scotty's Castle Power House and Pavilion



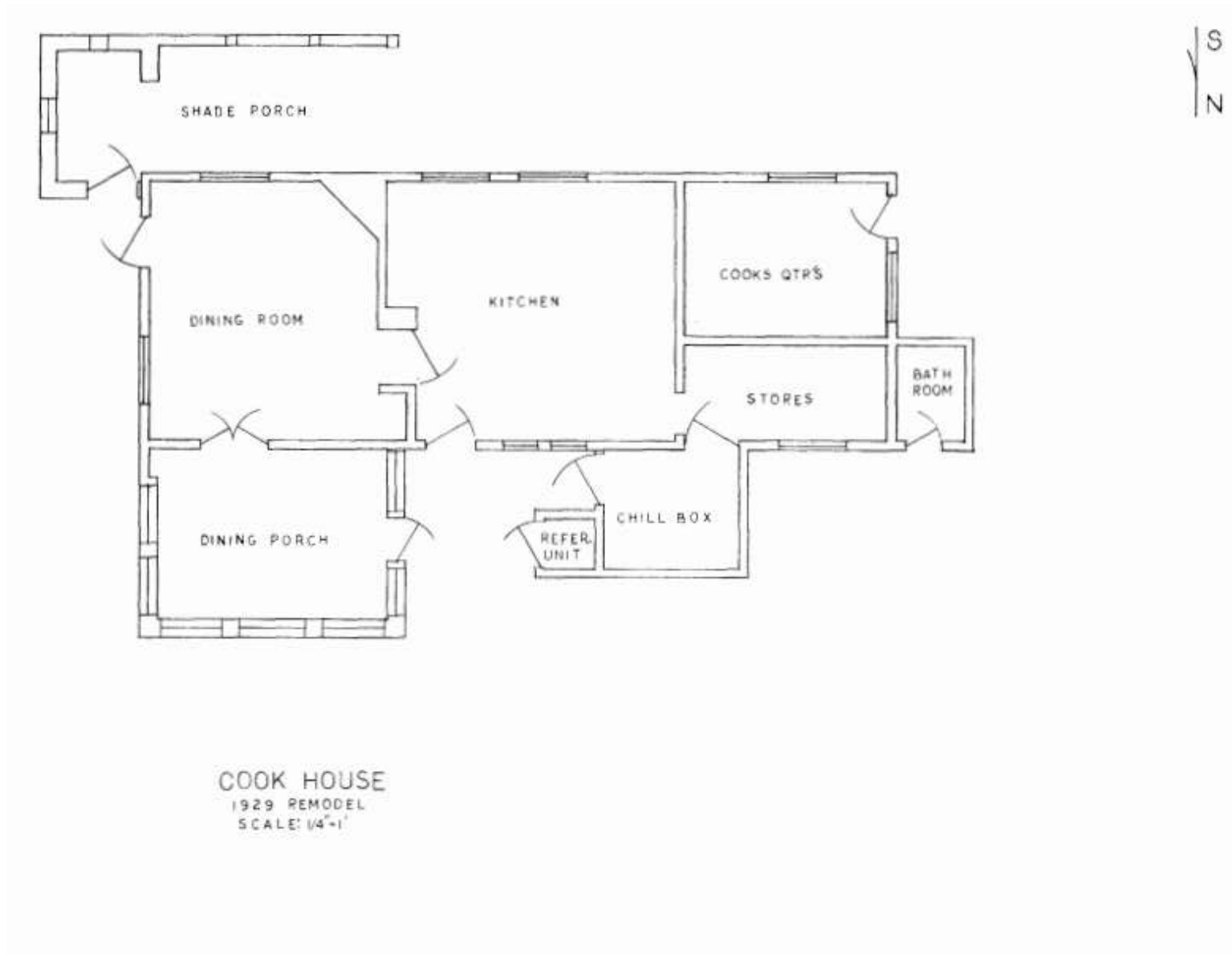
Source: Floor Plan - 1989 Historic American Buildings Survey, Death Valley Ranch, Survey No. CA-2557.

# Scotty's Castle Gas House



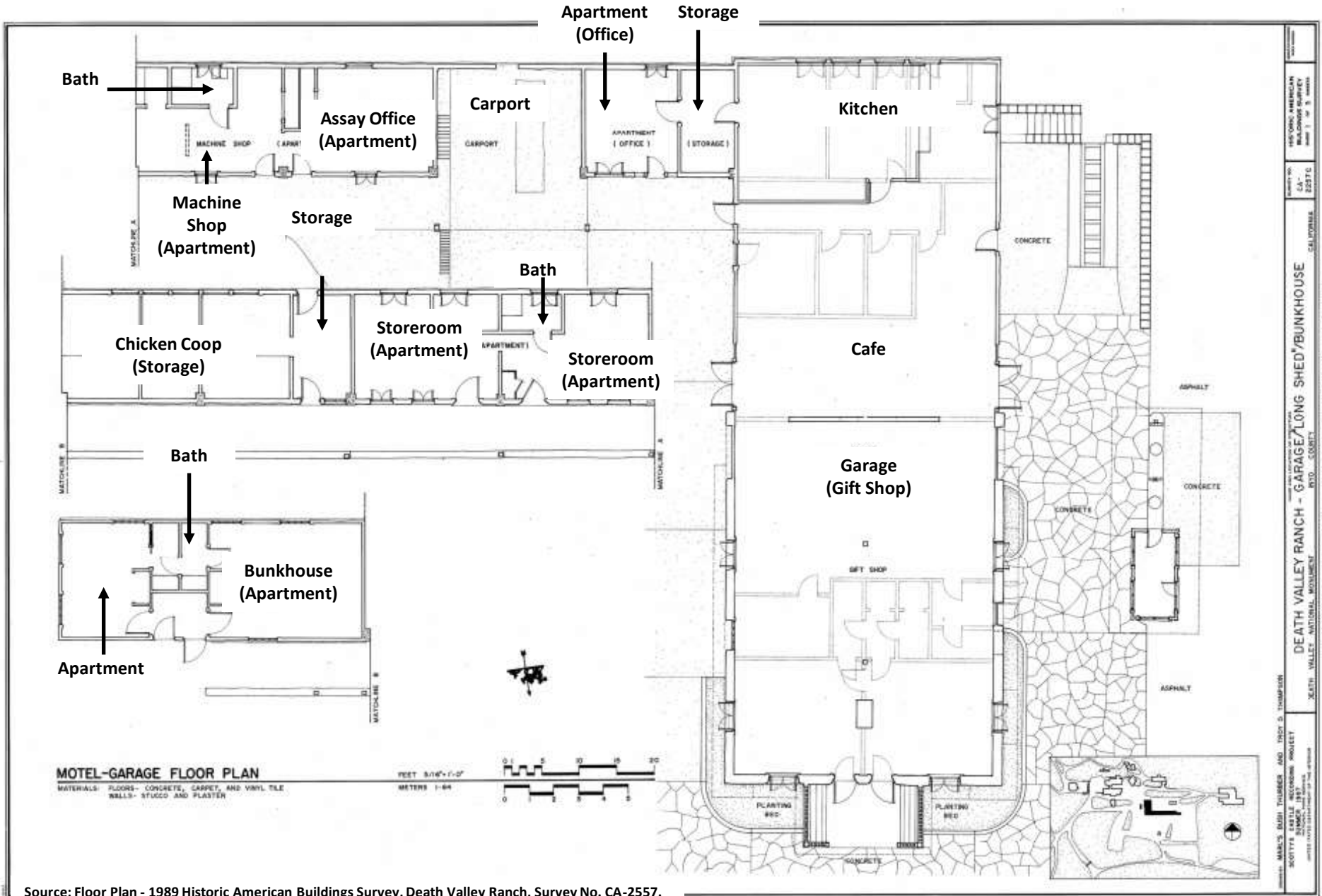
Source: August 2009 Historic Structures Report  
Death Valley Scotty Historic District, page 111.

## Scotty's Castle Cook House (Reconstructed)



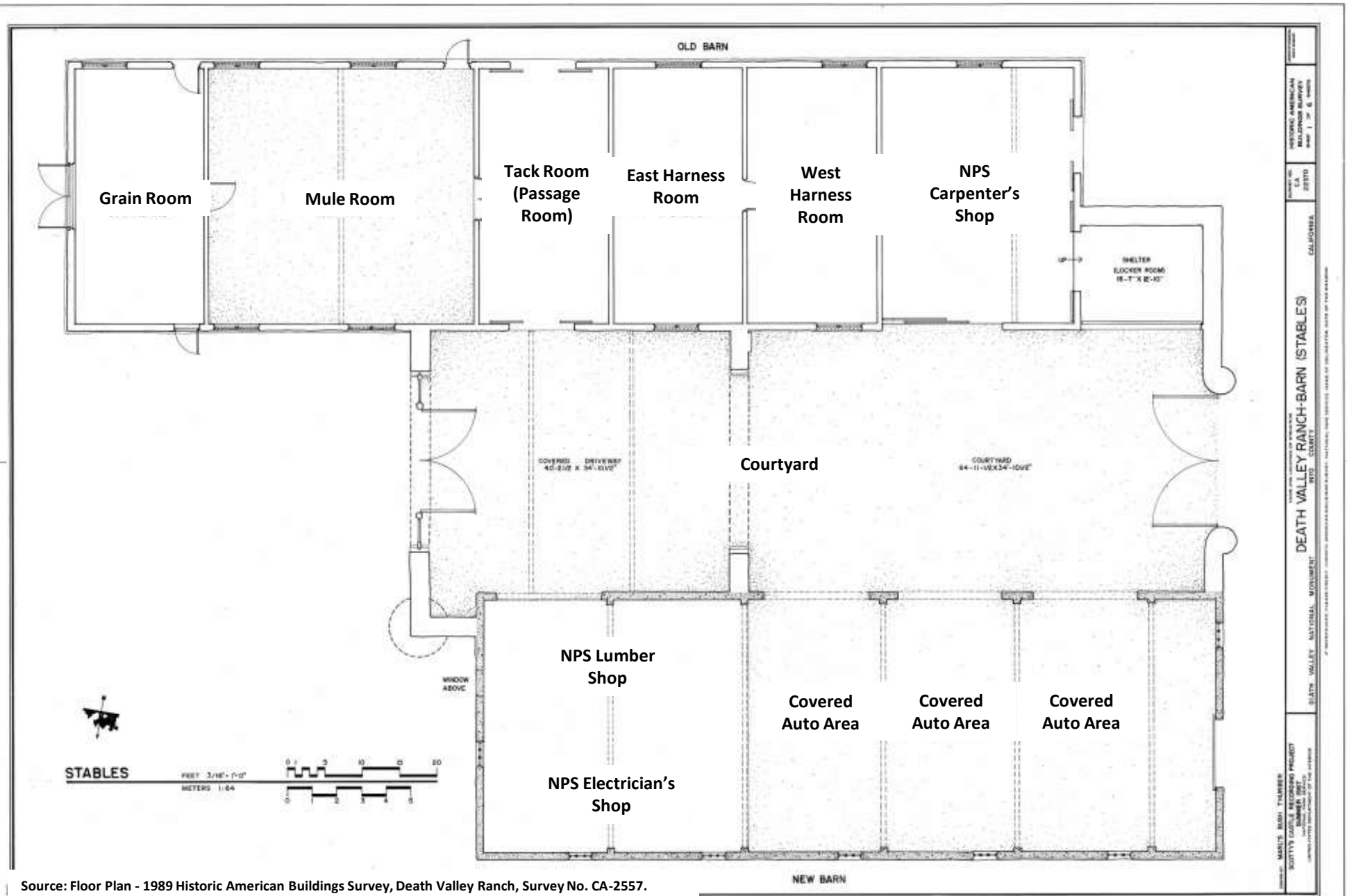
Source: Scotty's Castle Cook House Historic Structure Report, Figure 8.

# Scotty's Castle Garage / Long Shed / Bunkhouse



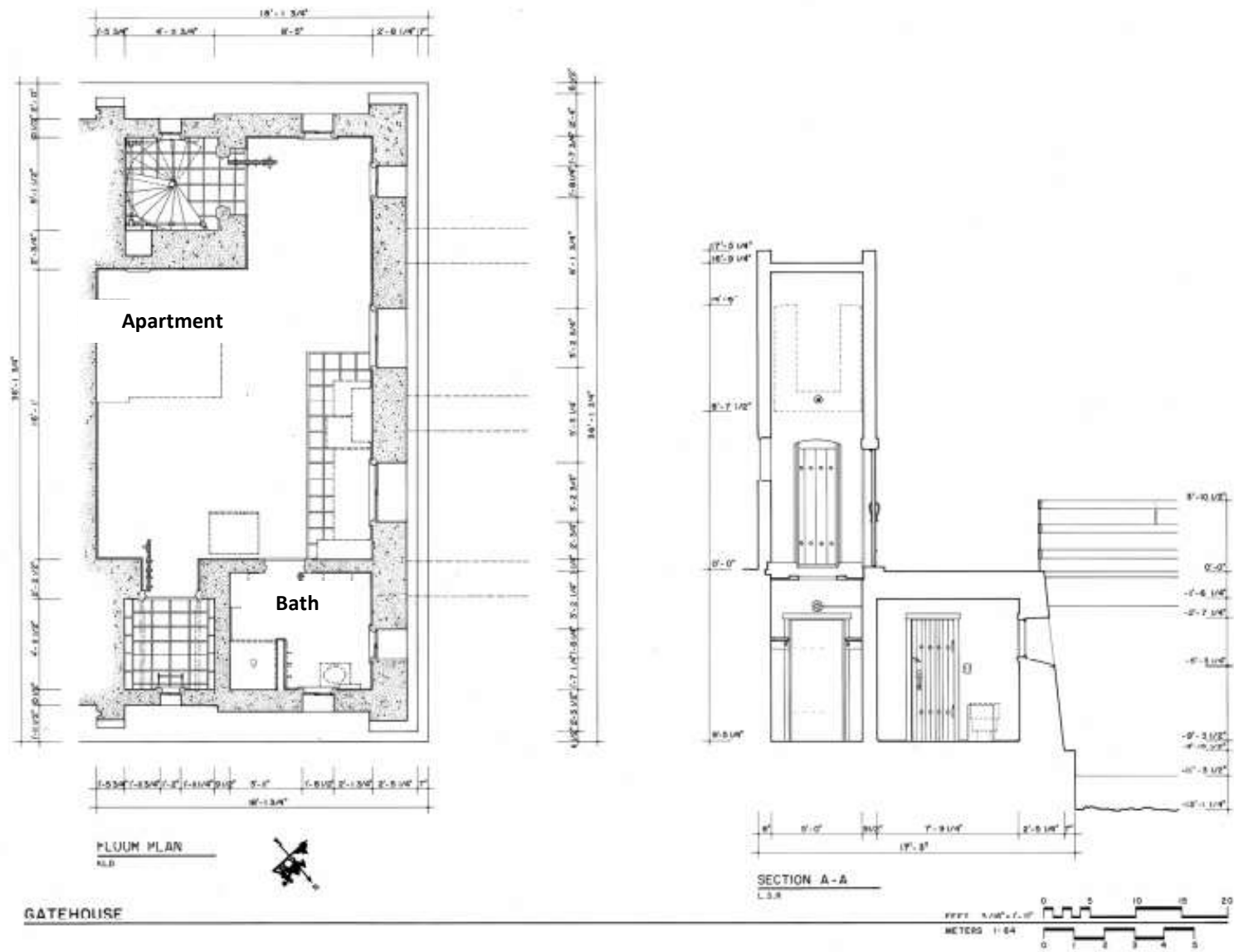
Source: Floor Plan - 1989 Historic American Buildings Survey, Death Valley Ranch, Survey No. CA-2557.

# Scotty's Castle Stables



Source: Floor Plan - 1989 Historic American Buildings Survey, Death Valley Ranch, Survey No. CA-2557.

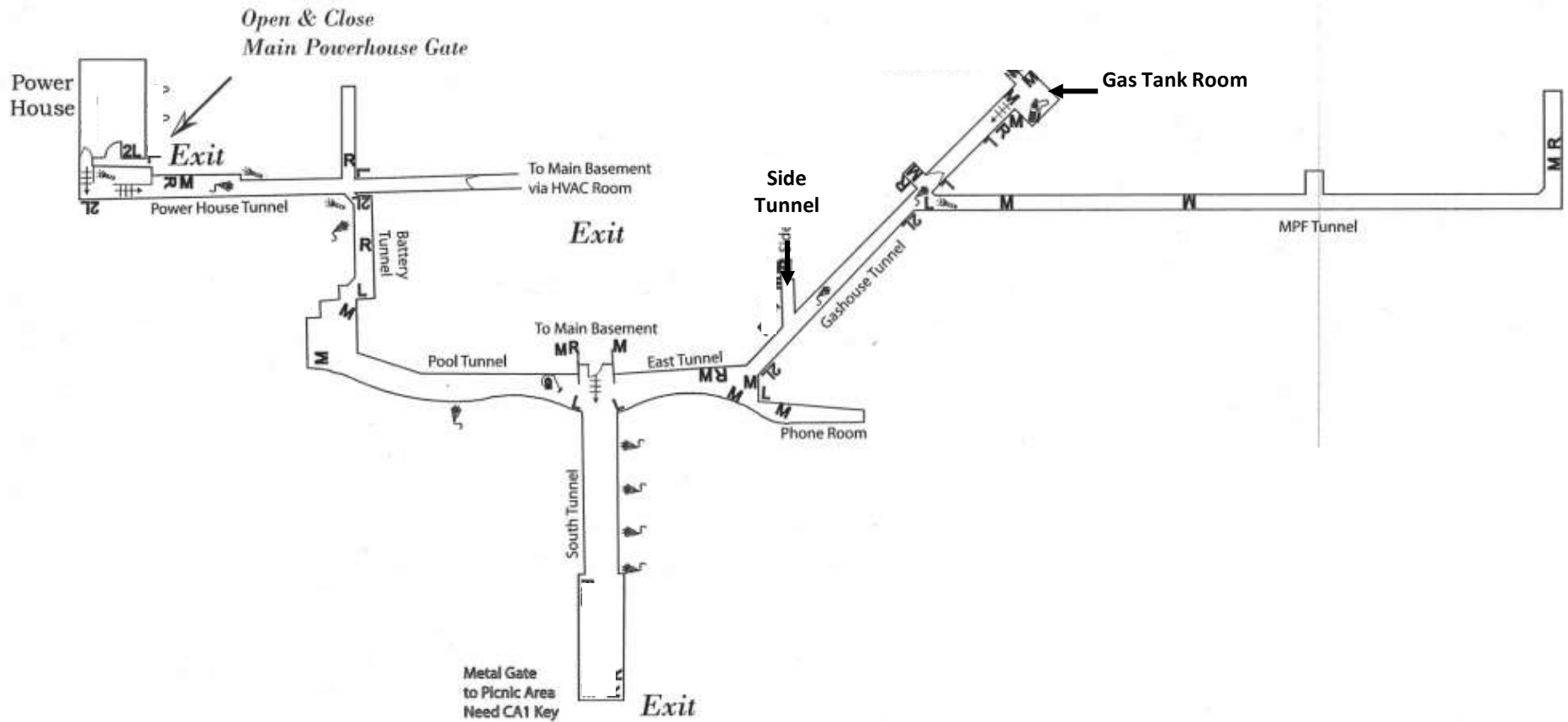
# Scotty's Castle Entrance Gate



Source: Floor Plan - 1989 Historic American Buildings Survey, Death Valley Ranch, Survey No. CA-2557..

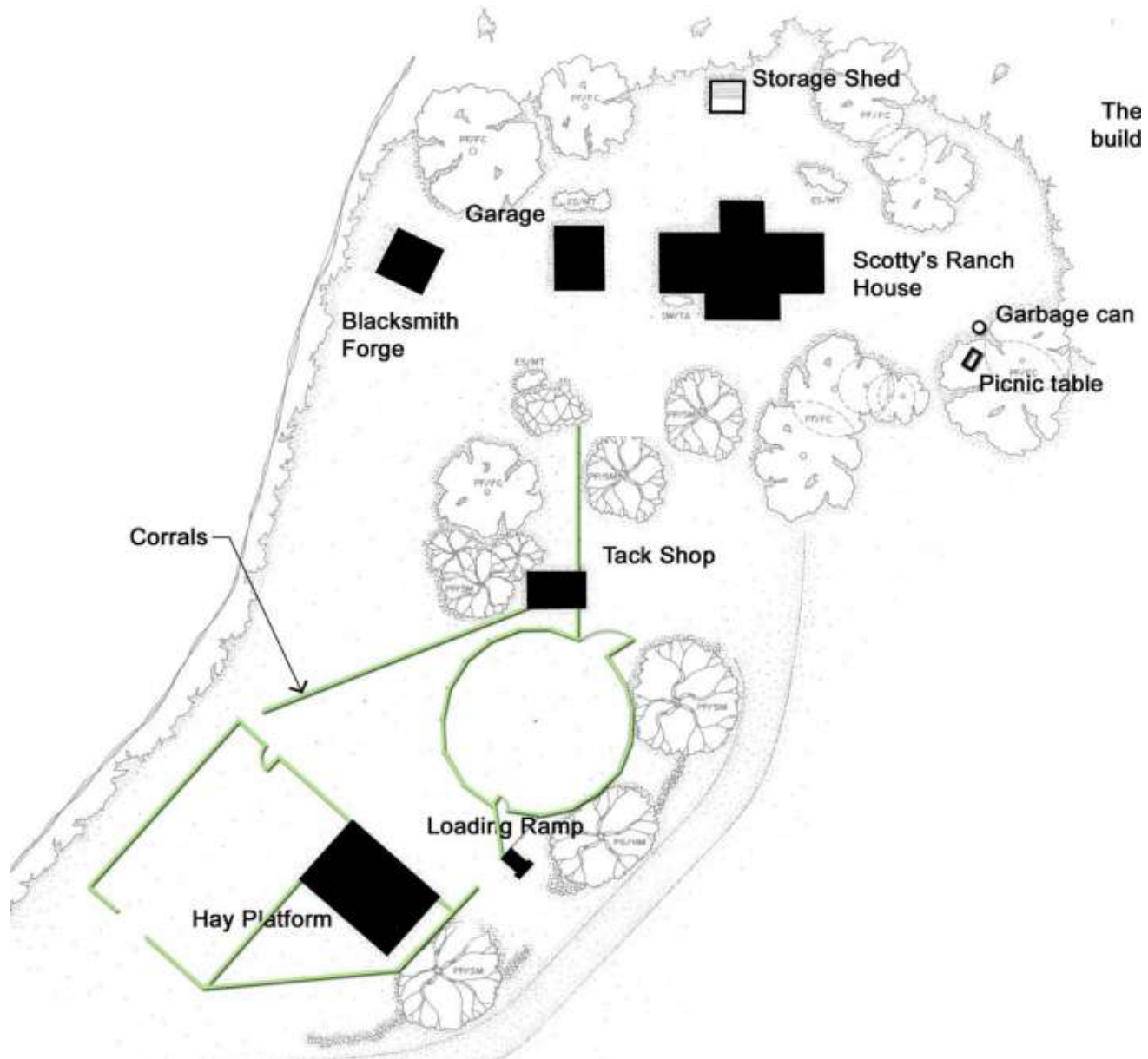
KELLIE DOWNEY, LIBERT & ROSAMOND  
 SCOTTY'S CASTLE RECORDING PROJECT  
 JOURNAL - JUNE  
 DEATH VALLEY RANCH - ENTRANCE GATES AND DUNGEON APARTMENT  
 DEATH VALLEY NATIONAL MONUMENT  
 INYO COUNTY  
 CALIFORNIA  
 HISTORIC AMERICAN BUILDINGS SURVEY  
 MAP 1 OF 5 SHEETS

# Scotty's Castle Tunnels



Source: Floor Plan and Name - Tunnels Floor Plan, version 07/2009

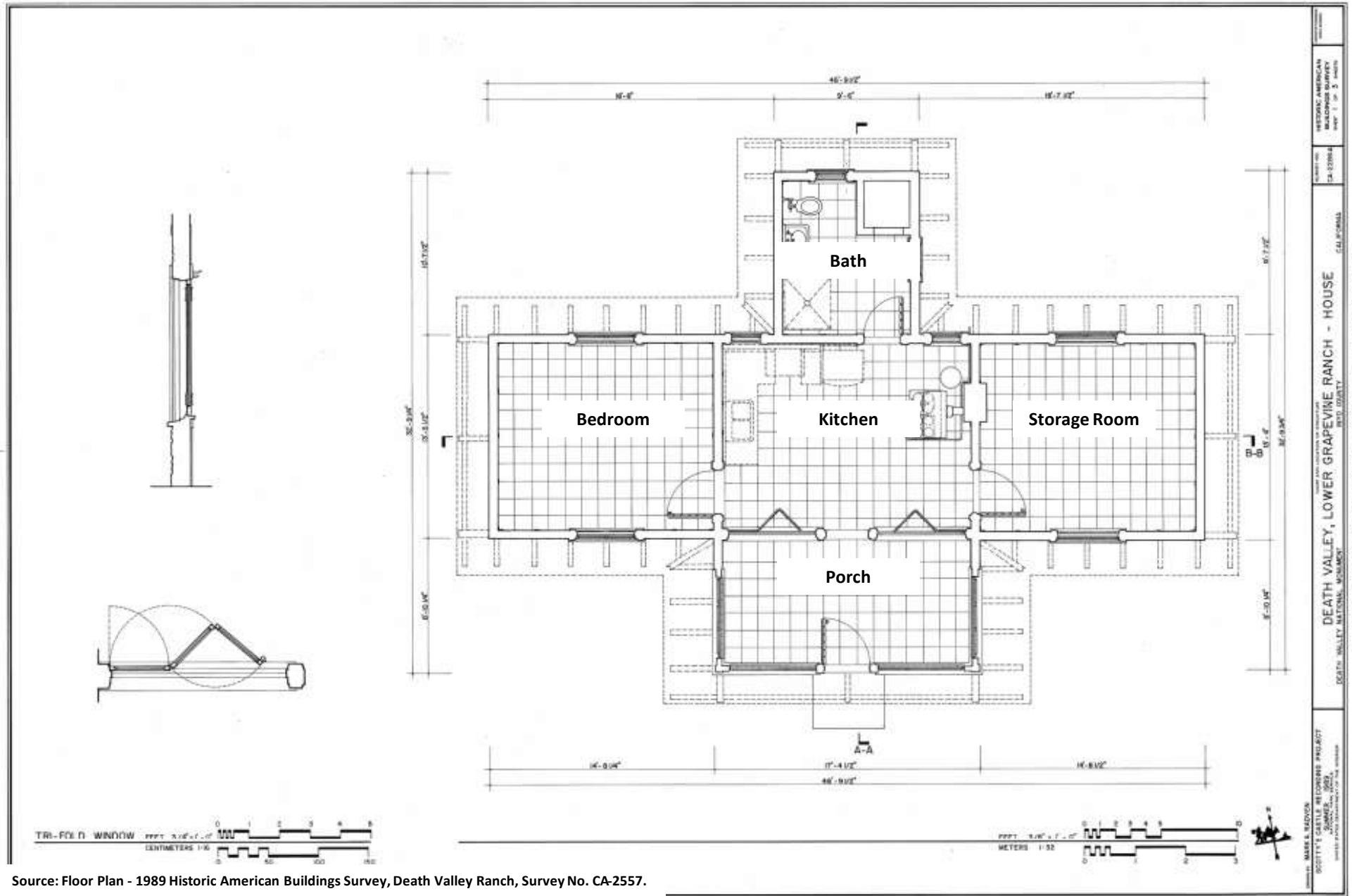
## Lower Grapevine Ranch (Closed to Public)



Source: 2005 Revised Cultural Landscape Inventory,  
Lower Vine Ranch, page 54.



# Scotty's Ranch House



Source: Floor Plan - 1989 Historic American Buildings Survey, Death Valley Ranch, Survey No. CA-2557.