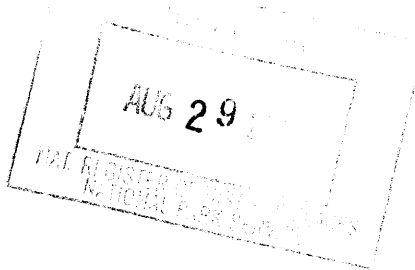


United States Department of the Interior
National Park Service

NATIONAL REGISTER OF HISTORIC PLACES
REGISTRATION FORM



1014

This form is for use in nominating or requesting determinations for individual properties and districts. See instructions in How to Complete the National Register of Historic Places Registration Form (National Register Bulletin 16A). Complete each item by marking "x" in the appropriate box or by entering the information requested. If any item does not apply to the property being documented, enter "N/A" for "not applicable." For functions, architectural classification, materials, and areas of significance, enter only categories and subcategories from the instructions. Place additional entries and narrative items on continuation sheets (NPS Form 10-900a). Use a typewriter, word processor, or computer, to complete all items.

1. Name of Property

historic name DADE CITY WOMAN'S CLUB

other names/site number N/A; FMSF# PA01238

2. Location

street & number 37922 Palm Avenue N/A not for publication

city or town Dade City N/A vicinity

state FLORIDA code FL county Pasco code 101 zip code 33525

3. State/Federal Agency Certification

As the designated authority under the National Historic Preservation Act, as amended, I hereby certify that this nomination request for determination of eligibility meets the documentation standards for registering properties in the National Register of Historic Places and meets the procedural and professional requirements set forth in 36 CFR Part 60. In my opinion, the property meets does not meet the National Register criteria. I recommend that this property be considered significant nationally statewide locally. (See continuation sheet for additional comments.)

Janet Snyder Matthews August 26, 2003
Signature of certifying official/Title Date

State Historic Preservation Officer, Division of Historical Resources
State or Federal agency and bureau

In my opinion, the property meets does not meet the National Register criteria. (See continuation sheet for additional comments.)

Signature of certifying official/Title Date

State or Federal agency and bureau

4. National Park Service Certification

I hereby certify that the property is:

- entered in the National Register See continuation sheet
- determined eligible for the National Register See continuation sheet.
- determined not eligible for the National Register See continuation sheet.
- removed from the National Register.
- other, (explain) _____

Beall
Signature of the Keeper

10/13/03
Date of Action

5. Classification

Ownership of Property

(Check as many boxes as apply)

- private
- public-local
- public-State
- public-Federal

Category of Property

(Check only one box)

- buildings
- district
- site
- structure
- object

Number of Resources within Property

(Do not include any previously listed resources in the count)

Contributing	Noncontributing	
1	0	buildings
0	0	sites
0	0	structures
0	0	objects
1	0	total

Name of related multiple property listings

(Enter "N/A" if property is not part of a multiple property listing.)

CLUBHOUSES OF FLORIDA'S WOMAN'S CLUBS

Number of contributing resources previously listed in the National Register

0

6. Function or Use

Historic Functions

(Enter categories from instructions)

SOCIAL/Clubhouse

Current Functions

(Enter categories from instructions)

SOCIAL/Clubhouse

7. Description

Architectural Classification

(Enter categories from instructions)

LATE 19TH & 20TH CENTURY AMERICAN

MOVEMENTS/Prairie School

Materials

(Enter categories from instructions)

foundation Stucco

walls Stucco

roof Asphalt Shingle

other

Narrative Description

(Describe the historic and current condition of the property on one or more continuation sheets.)

8. Statement of Significance

Applicable National Register Criteria

(Mark "x" in one or more boxes for the criteria qualifying the property for National Register listing.)

- A Property is associated with events that have made a significant contribution to the broad patterns of our history.
B Property is associated with the lives of persons significant in our past.
C Property embodies the distinctive characteristics of a type, period, or method of construction or represents the work of a master, or possesses high artistic values, or represents a significant and distinguishable entity whose components lack individual distinction.
D Property has yielded, or is likely to yield information important in prehistory or history.

Criteria Considerations

(Mark "x" in all the boxes that apply.)

Property is:

- A owned by a religious institution or used for religious purposes.
B removed from its original location.
C a birthplace or grave.
D a cemetery.
E a reconstructed building, object, or structure.
F a commemorative property.
G less than 50 years of age or achieved significance within the past 50 years

Narrative Statement of Significance

(Explain the significance of the property on one or more continuation sheets.)

9. Major Bibliographical References

Bibliography

Cite the books, articles, and other sources used in preparing this form on one or more continuation sheets.)

Previous documentation on file (NPS):

- preliminary determination of individual listing (36 CFR 36) has been requested
previously listed in the National Register
previously determined eligible by the National Register
designated a National Historic Landmark
recorded by Historic American Buildings Survey #
recorded by Historic American Engineering Record

Areas of Significance

(Enter categories from instructions)

SOCIAL HISTORY

ARCHITECTURE

Period of Significance

1926-1953

Significant Dates

1926

Significant Person

N/A

Cultural Affiliation

N/A

Architect/Builder

Arch: Roberts, Artemus

Blder: Gillespie, George

Primary location of additional data:

- State Historic Preservation Office
Other State Agency
Federal agency
Local government
University
Other

Name of Repository

#

10. Geographical Data

Acreage of Property Less than 1

UTM References

(Place additional references on a continuation sheet.)

UTM grid for reference 1: Zone 17, Easting 383400, Northing 3137280

UTM grid for reference 3: Zone, Easting, Northing

See continuation sheet

Verbal Boundary Description

(Describe the boundaries of the property on a continuation sheet.)

Boundary Justification

(Explain why the boundaries were selected on a continuation sheet.)

11. Form Prepared By

name/title Ms. Kathy Reynolds, Building Chairman/Carl Shiver, Historic Sites Specialist

organization Florida Bureau of Historic Preservation date August 2003

street & number R.A. Gray Building, 500 South Bronough Street telephone (850) 245-6333

city or town Tallahassee state Florida zip code 32399-0250

Additional Documentation

Submit the following items with the completed form:

Continuation Sheets

Maps

A USGS map (7.5 or 15 minute series) indicating the property's location.

A Sketch map for historic districts and properties having large acreage or numerous resources.

Photographs

Representative black and white photographs of the property.

Additional items

(check with the SHPO or FPO for any additional items)

Property Owner

(Complete this item at the request of SHPO or FPO.)

name Ms. Julie Cotton, Treasurer

street & number GFWC Dade City Woman's Club, Inc., P.O. Box 1831 telephone (352) 588-5315

city or town Dade City state Florida zip code 33526-1831

Paperwork Reduction Act Statement: This information is being collected for applications to the National Register of Historic Places...

Estimated Burden Statement: Public reporting burden for this form is estimated to average 18.1 hours per response including time for reviewing instructions...

**United States Department of the Interior
National Park Service**

**NATIONAL REGISTER OF HISTORIC PLACES
CONTINUATION SHEET**

Section number 7 Page 1

DADE CITY WOMAN'S CLUB
PASCO COUNTY, FLORIDA
DESCRIPTION

SUMMARY

The Dade City Woman's Club building is a one-story basically Prairie Style building that was constructed in 1926. The clubhouse is constructed of stucco covered hollow tile resting on a continuous hollow tile foundation and has a combination hip and gable roof with the hip roof covering a low balcony tower found at the north (main entrance) end of the structure. The main fenestration of the building combines paired 1/1-light double-hung wood sash windows and casement windows with an upper row of divided mullioned glass. The main divisions of the interior are an auditorium and stage area separated from the dining room by three sets of double-fold French doors. The building has largely retained its architectural and structural integrity throughout the years.

SETTING

Dade City is a community of approximately 31,000 permanent residents located in eastern Pasco County, Florida, one of the coastal counties in central Florida located on the Gulf of Mexico. The Woman's Club building is situated on two city lots, standing at its original location, in an area of Dade City called Congress Park. At the time of construction, the Congress Park development contained eight residences and a few small businesses, including a gas station, boarding house and motor court.¹ These houses were scattered around Congress Park leaving many vacant lots. None of the houses were adjacent to the clubhouse. Over the years, residential structures became predominant in Congress Park. The building stands at the juncture of a commercial district and a residential area. There are a bank to the north, a commercial building to the west, and residences to the east and south. The clubhouse is set back from Palm Avenue on the north, closely abuts 7th Street (U.S. Highway 301) on its west, and has some grassy areas on the east and south. The clubhouse stands out in the neighborhood as one of the oldest and most prominent buildings in an area marked by commercial and residential buildings constructed between the 1960s and 1980s.

NARRATIVE DESCRIPTION

Exterior Description

The Dade City Woman's Club building is a tall one-story building, standing at a twenty-four foot elevation. The walls and foundation are constructed of stuccoed hollow tile block. The main roof structure is gabled at the rear and abuts a low balcony tower covered with a shallow-pitched hip roof at the front of the building. The shallow front porch pavilion on the main (north) facade is also covered with a hip roof (Photos 1-2). There is also a small hipped canopy roof, supported by wood brackets that shelters the "brides entrance" found at the northeast corner of the main facade (Photo 1). The eaves of the roof are raked at a very low angle,

¹ Earl McKinney, personal interview, January 10, 2001.

**United States Department of the Interior
National Park Service**

**NATIONAL REGISTER OF HISTORIC PLACES
CONTINUATION SHEET**

Section number 7 Page 2 DADE CITY WOMAN'S CLUB
PASCO COUNTY, FLORIDA
DESCRIPTION

and the roof areas are surfaced with asphalt composition shingles. The rectangular building contains approximately 4,300 square feet of interior space and exhibits mainly Prairie, Mediterranean Revival, and Craftsman style features. The main entrance faces north and is quite visible from 7th Street. The northern facade has a small portico projecting over the doorway, echoing the shallow roofline. The symmetry of the double door of the main entrance is repeated in a pair of 1/1-light double-hung wooden sash windows with 4-light transoms on either side of the door (Photo 1). At the west side of the porch is a door that provides access to stairs leading to an interior balcony (Photo 3). A door on the east side of the porch opens onto a hallway that leads to the foyer, kitchen, "bride's entrance," kitchen, and tearoom (Photo 2). Breaking the symmetry of the facade is the "bride's entrance," attached diagonally to the northeast corner of the building, which has its own one-bay recessed porch beyond which projects a small, bracketed console roof that shelters the entrance steps (Photo 1). Another prominent feature of the northern facade is the nearly three foot tall lettering painted in the frieze are of the wall just below the roofline, which reads "Woman's Club."

The eastern elevation (Photos 4-5) features a large exterior chimney attached to a faceted wall bay and flanked by a pair of casement windows with an upper row of divided mullioned glass. The elevation is also marked by two sets of triple casement windows of the same design and by paired and single examples of 1/1-light double-hung sash windows. Paired 1/1-light double-hung sash windows can also be seen just below the eaves of the balcony tower. The southern (Photo 6) facade includes an attached concrete porch that provides an entry to the kitchen, doors to the basement and 1/1-light windows of varying sizes. The western facade (Photo 7-8) has a single door that exits from the stage area onto a high concrete stoop and is marked by five sets of paired 1/1-light double-hung wood sash windows. Smaller single examples of 1/1 light windows can be found near the northern and southern ends of the elevation, and the interior balcony tower exhibit a set of triple 1/1-light double-hung wood sash windows.

The building retained its architectural integrity throughout the years. The only addition has been the concrete porch attached to the exterior of the kitchen at the back of the building. On the west entrance of the building, the concrete steps to the stoop have been removed.

Interior Description

The interior design of the clubhouse is consistent with clubhouses of this era which were designed to serve a social function.² The building contains a large central hall which serves as a social hall or auditorium with smaller rooms located off the central hall. The smaller rooms include a foyer area for greeting guests, a small hall area at the "bride's entrance," and a tearoom. Open circulation to these smaller rooms is facilitated through doors surrounding the central hall, with three sets of bi-fold French doors between the auditorium and

² Sidney Johnston and Barbara Mattick, United States Department of Interior, Clubhouses of Florida's Woman's Clubs, National Register of Historic Places Multiple Property Documentation Form, Section E Continuation Sheet.

**United States Department of the Interior
National Park Service**

**NATIONAL REGISTER OF HISTORIC PLACES
CONTINUATION SHEET**

Section number 7 Page 3

DADE CITY WOMAN'S CLUB
PASCO COUNTY, FLORIDA
DESCRIPTION

the tearoom and two large sets of wooden doors between the foyer and auditorium (Photo 9). A small stage is located at the southern end of the auditorium (Photo 10). A door behind the stage leads to a dressing room and storage area. From this area, interior access to the basement can be gained. Access to the large kitchen is through the tearoom. The bathrooms are located on the northwest and northeast sides of the foyer area.

English style influences are exhibited in the interior, especially in the tearoom. These influences are expressed in the large fireplace with a very high mantle and in the ribbon casement windows with distinctive mullion patterning (Photos 11-13).³ Large wooden beams are exposed in the ceiling of the auditorium. Other distinctive features of the interior include original light fixtures, plaster walls and heart of pine floors.

Originally, the auditorium and stage could be viewed from a balcony area (Photo 14). The balcony area has dark, wooden railing. The balcony can only be reached from an exterior door. In 1970, the balcony was blocked off by a piece of sheet rock to accommodate ductwork and vents for an air conditioning system (Photo 17). The members of the club intend to restore this area to its original state. The bathrooms will be brought into ADA compliance. Alterations will include replacing toilets and sinks with handicap toilets and lavatories. The existing bathroom stalls must be modified to accommodate wheel chairs.⁴

³ Abell Garcia Architects, Master Plan For Dade City Woman's Club, February 14, 2001.

⁴ Ibid.

United States Department of the Interior
National Park Service

**NATIONAL REGISTER OF HISTORIC PLACES
CONTINUATION SHEET**

Section number 8 Page 1 DADE CITY WOMAN'S CLUB
PASCO COUNTY, FLORIDA
SIGNIFICANCE

SUMMARY

The Dade City Woman's Club Building is significant at the local level under criteria A and C in the areas of Social History and Architecture. The building is significant as the meeting place for formally organized women's social service activities in the city of Dade City. The building is also significant in the area of Architecture for embodying distinctive features of clubhouses erected by Florida woman's clubs, such as a meeting hall and stage and separate dining areas to host club meetings and other events. The stylistic character of the building is basically a combination of Prairie Style and Mediterranean Revival features, both of which had an important impact on the design of residences, schools, and small public buildings in Florida during the 1920s. The clubhouse exhibits English influences on the interior. It has been the location of many of the community's major events ranging from high school dances to political debates. The clubhouse contributes to the **CLUBHOUSES OF FLORIDA'S WOMAN'S CLUBS Multiple Property Submission** under the **Florida Land Boom 1921-1926 Historic Context and the F.1 Property Type: Clubhouses.**

SIGNIFICANCE

Social History

The Dade City Woman's Club building emerged as a result of two significant social movements during the first decades of the twentieth century, the women's movement and the 1920's Florida Land Boom. Dade City was affected by the movement for greater social and political freedom of women. This is evident in the formation of the Dade City Woman's Club, a chapter of the Greater Federation of Woman's Clubs, a national organization. In Dade City, the Florida land boom began in 1925. Advertisements for new land and developments filled the Dade City Banner, the biweekly newspaper of that era. Many articles about the Dade City Woman's Club, its impact on the community, and the present building were published by the Banner.⁵

The Woman's Club and its activities have been an important part of life in Dade City since 1911. For more than 75 years, the third and current clubhouse has been a part of the social fabric of Dade City and a center for club and community activities. At first the club members met in the salesman's sample room which was located in a building adjacent to the Dade City Hotel. This building served as a place for salesmen staying at the hotel to display their wares to potential customers. After the hotel burned down and was not rebuilt, the Sample Room lost its purpose. This provided the Dade City Woman's Club with the opportunity to purchase the building for its first clubhouse in 1911. When the need for a bigger clubhouse arose, the club purchased a residence from Judge O. L. Dayton which was located at the intersection of Church Avenue and Seventh Street. The club paid \$3,000 for the house and refurbished it as a clubhouse.⁶

⁵ Congress Park, Advertisement, Dade City Banner. October 6, 1925.

⁶ Archives, Dade City Woman's Club, Dade City, Florida.

United States Department of the Interior
National Park Service

NATIONAL REGISTER OF HISTORIC PLACES
CONTINUATION SHEET

Section number 8 Page 2 DADE CITY WOMAN'S CLUB
PASCO COUNTY, FLORIDA
SIGNIFICANCE

When the Florida Land Boom arrived in Dade City, the club was able to take advantage of the growing demand for desirable property. These prosperous times allowed the club to sell the second clubhouse for \$16,000.⁷ With the funds, the Dade City Woman's Club purchased a lot on the corner of Meridian Avenue and Tenth Street from J.R.A. Williams. Intending to construct their third clubhouse at this location, the committee chosen to secure plans for the new clubhouse traveled by automobile to inspect the clubhouse of the Daytona Woman's Club and stopped along the way to inspect other buildings.⁸ In July 1925, the club members had selected architect Artemus Roberts as the architect to design plans for the new clubhouse to be constructed on the Meridian Avenue lot.⁹ In a Dade City Banner article on September 11, 1925, the building committee announced that bids for the clubhouse to be constructed were being received. This article also declared that, "This building will be one of the finest of its kind in this part of the country and will stand as a monument to the foresighted, progressive women of Dade City."¹⁰ However, two events occurred to change the location of the third clubhouse.

Mr. Cosner, a prominent Dade City resident, approached the club and offered to buy their lot so he could construct an apartment building on the site. About the same time, Irving M. Austin of New York had come to Dade City and wanted to develop a new subdivision, to be called Congress Park, on the southern outskirts of town.¹¹ Austin felt that a clubhouse for a group of 150 prominent women would attract investors to his Congress Park development and offered to donate the land (two city lots) plus \$500 to the club if they would construct their clubhouse there. The club accepted his offer and sold the lot on Meridian Avenue to Cosner for \$10,000. With \$23,000 in treasury and approximately 150 members, the present clubhouse was built in 1926. The contractor was George Gillespie, and he used the plans that had been prepared by Artemus Roberts. The firm of G.C. Newsome and Sons decorated the interior. G.C. Staggs was the electrical contractor.¹²

When the clubhouse was constructed, Congress Park was an entirely new development. In September 1925, Congress Park was advertised prematurely, before the Dade City bond election for the water and sewer utility system was approved.¹³ Development was delayed and a retraction of the ad appeared in the Dade City Banner. In addition to the clubhouse, eight private homes were erected in the Congress Park Subdivision. An interview with long time Dade City resident Earl McKinney revealed that the only commercial properties in Congress Park were a gas station and a motel.¹⁴ The Crescent Theater was constructed by Austin and a man named A. Garcia on the outskirts of Congress Park. A 100 room hotel was planned, but never built due to the

⁷ "Woman's Club House Sold," Dade City Banner. April 17, 1925.

⁸ "Important Meeting of the Woman's Club," Dade City Banner. May 22, 1925.

⁹ "Club Women to Erect New Home," Dade City Banner. July 10, 1925.

¹⁰ "Club House Plans," Dade City Banner. September 11, 1925.

¹¹ "New Yorkers Developing City Tract," Dade City Banner. September 4, 1925.

¹² Archives, Dade City Woman's Club, Dade City, Florida.

¹³ "Dade City Bond Election," Dade City Banner. September 25, 1925.

¹⁴ Earl McKinney, personal interview, January 10, 2001.

**United States Department of the Interior
National Park Service**

**NATIONAL REGISTER OF HISTORIC PLACES
CONTINUATION SHEET**

Section number 8 Page 3 DADE CITY WOMAN'S CLUB
PASCO COUNTY, FLORIDA
SIGNIFICANCE

collapse of the Florida Land Boom. The end of the Florida Land Boom also affected Austin's development of Congress Park. After 1926, no new buildings were erected in Congress Park for many years.¹⁵

Prior to the formal dedication of the building, a cornerstone of white Georgia marble was laid on January 26, 1926. The cornerstone contains memorabilia of the club and the Dade City community.¹⁶ At the opening of the building, the club president, Dolly Hendley said in her welcoming remarks, "...the club has always been like a big congenial family and this is an event we have looked forward to for many years to own our own home. It is the intention of the club to make this a community center. Such a place has been a long felt want in Dade City. The building will be used for club purposes, social gatherings and we hope for community sings."¹⁷

That goal has been realized. Over the years the clubhouse has been used for club meetings, parties, high school proms, weddings, wedding receptions, theatrical performances, dance recitals, piano recitals, musical performances, political debates and other similar community uses.

Gatherings and meetings have occurred at the clubhouse since 1926. Many of these events have been a significant part of the local history. In addition, the clubhouse is also associated with the lives of several significant persons in local history, including Dade City Woman's Club charter members Ruth Embry, Dolly Hendley, Ruth "Polly" Touchton and State Representative John Burks. On October 27, 1985, the Pasco County Historical Society designated the building as a historical site and placed a plaque on the clubhouse recognizing this designation. The building meets several of the Pasco County Historical Preservation Committee's criteria for placement in the county register of historical places. These criteria include the building's association with

¹⁵ James J. Horgan, Alice F. Hall and Edward J. Herrmann, The Historic Places of Dade City (Pasco County: Pasco County Historic Preservation Committee, 1992) 15.

¹⁶ Archives, Dade City Woman's Club, Dade City, Florida.

¹⁷ "New Home of Woman's Club Formally Opened," Dade City Banner. May 17, 1926.

United States Department of the Interior
National Park Service

**NATIONAL REGISTER OF HISTORIC PLACES
CONTINUATION SHEET**

Section number 8 Page 4 DADE CITY WOMAN'S CLUB
PASCO COUNTY, FLORIDA
SIGNIFICANCE

events and persons significant to the history of Pasco County, its distinctive architectural style, and the fact that it has largely retained its original design.¹⁸

Architecture

The architectural design of the Dade City Woman's Club fits with the floor plan and design styles of many Florida Woman's Club clubhouses built during the same era. The layout includes a foyer for greeting guests, an auditorium with a small stage for performances and lectures, a side (tea) room for receptions, and a kitchen. All areas display a practical design for varied public use. The architect, Artemus Roberts (1844-1946) had earlier designed private residences, small commercial buildings, and office buildings in Indiana and Nebraska. Roberts is said to have designed a Nebraska home for the flamboyant populist politician William Jennings Bryan (1860-1925), which is still standing today.¹⁹ Roberts' name has also been associated with other Dade City buildings, including the Gothic Revival style Dade City Grammar School (Rodney B. Cox Elementary School) built in 1926, and the Arthur Auvil Home, constructed c. 1925.²⁰

For the Woman's Club building in his adopted state of Florida, Roberts' design blends Mediterranean Revival, Prairie, and Craftsman styles on the exterior with English influences on the interior. The Dade City Woman's Club enhances the neighborhood surrounding it and is one of the most architecturally significant historic buildings in Dade City because it is a handsome, well-proportioned structure designed by a notable architect.

¹⁸ James J. Horgan, Alice F. Hall and Edward J. Herrmann, The Historic Places of Dade City (Pasco County: Pasco County Historic Preservation Committee, 1992) 62.

¹⁹ Two homes in Nebraska associated with Bryan are still extant: 1625 D Street in Lincoln constructed c. 1887 and "Fairview," a country house constructed c. 1901. Bryan moved to Florida in 1921.

²⁰ James J. Horgan, Alice F. Hall and Edward J. Herrmann, The Historic Places of Dade City (Pasco County: Pasco County Historic Preservation Committee, 1992) 25-42.

**United States Department of the Interior
National Park Service**

**NATIONAL REGISTER OF HISTORIC PLACES
CONTINUATION SHEET**

Section number 9 Page 1

DADE CITY WOMAN'S CLUB
PASCO COUNTY, FLORIDA
MAJOR BIBLIOGRAPHICAL REFERENCES

BIBLIOGRAPHY

Archives. Dade City Woman's Club, Dade City, Florida.

Abell Garcia Architects. Master Plan For Dade City Woman's Club, 14 Feb. 2001.

"Woman's Club House Sold," Dade City Banner. April 17, 1925.

"Important Meeting of the Woman's Club," Dade City Banner. May 22, 1925.

"Club Women to Erect New Home," Dade City Banner. July 10, 1925.

"New Yorkers Developing City Tract," Dade City Banner. September 4, 1925.

"Club House Plans," Dade City Banner. September 11, 1925.

"Dade City Bond Election," Dade City Banner. September 25, 1925.

"Change Location Club House," Dade City Banner. September 29, 1925.

Congress Park. Advertisement. Dade City Banner. October 6, 1925.

"New Home of Woman's Club Formally Opened," Dade City Banner. May 17, 1926.

Dayton, William. Personal interview. March 12, 2001.

Horgan, James J., Hall, Alice F. and Herrmann, Edward J. The Historic Places of Dade City. Pasco County: Pasco County Historic Preservation Committee, 1992.

Johnston, Sidney and Mattick, Barbara. United States Department of Interior, Clubhouses of Florida's Woman's Clubs, National Register of Historic Places Multiple Property Documentation Form, Section E Continuation Sheet.

McKinney, Earl. Personal interview. 10 Jan. 2001.

**United States Department of the Interior
National Park Service**

**NATIONAL REGISTER OF HISTORIC PLACES
CONTINUATION SHEET**

Section number 10 Page 1

DADE CITY WOMAN'S CLUB
PASCO COUNTY, FLORIDA
GEOGRAPHICAL DATA

Verbal Boundary Description

Lots 1 and 2, Block 4, Congress Park, lying East of US Hwy 301, as per map or plat therefore recorded in Plat Book 4 Page 1 Public Records of Pasco County, Florida and East 28 feet of South 47 feet of Lot 9 and the South 47 feet of Lot 10 Block 2 Orange Park as per map or plat thereof recorded in Plat Book 2, Page 18, Public Records of Pasco County Florida.

Boundary Justification

The above boundaries encompass all of the historic resources associated with the historic Dade City Woman's Club.

**United States Department of the Interior
National Park Service**

**NATIONAL REGISTER OF HISTORIC PLACES
CONTINUATION SHEET**

Section number _____ Page 1 DADE CITY WOMAN'S CLUB
PASCO COUNTY, FLORIDA
PHOTOGRAPHS

LIST OF PHOTOGRAPHS

1. Dade City Woman's Club
2. 37922 Palm Avenue, Dade City (Pasco County), Florida
3. Sylvia Tipton
4. December 2001
5. Dade City Woman's Club
6. Main (North) Facade, Looking South
7. Photo 1 of 21

Items 1-5 are the same for all of the remaining photographs.

6. Main (North) Facade, Looking Southeast
7. Photo 2 of 21

6. Detail, Main (North) Facade Porch, Looking Southwest
7. Photo 3 of 21

6. East Elevation, Looking West
7. Photo 4 of 21

6. East Elevation, Looking Northwest
7. Photo 5 of 21

6. Rear (South) Elevation, Looking North
7. Photo 6 of 21

6. West Elevation, Looking East
7. Photo 7 of 21

6. Main (North) Facade and West Elevation, Looking Southeast
7. Photo 8 of 21

6. Interior, Auditorium, Looking Southeast into Tearoom
7. Photo 9 of 21
6. Interior, Auditorium, Looking South toward Stage
7. Photo 10 of 21

**United States Department of the Interior
National Park Service**

**NATIONAL REGISTER OF HISTORIC PLACES
CONTINUATION SHEET**

Section number _____ Page 2 DADE CITY WOMAN'S CLUB
PASCO COUNTY, FLORIDA
PHOTOGRAPHS

6. Interior, Tearoom, Looking Southeast

7. Photo 11 of 21

6. Interior, Tearoom, Fireplace Detail, Looking Southeast

7. Photo 12 of 21

6. Interior, Tearoom, Looking Northeast

7. Photo 13 of 21

6. Interior, Auditorium, Looking North toward Entrance

7. Photo 14 of 21

6. Interior, Auditorium, Window Detail, Looking West

7. Photo 15 of 21

6. Interior, Auditorium, Looking Southwest

7. Photo 16 of 21

6. Interior, Auditorium, Looking Northwest toward Balcony

7. Photo 17 of 21

6. Interior, Tearoom, Window Detail, Looking East

7. Photo 18 of 21

6. Interior, Tearoom, Looking Northeast

7. Photo 19 of 21

6. Interior, Tearoom, Looking North

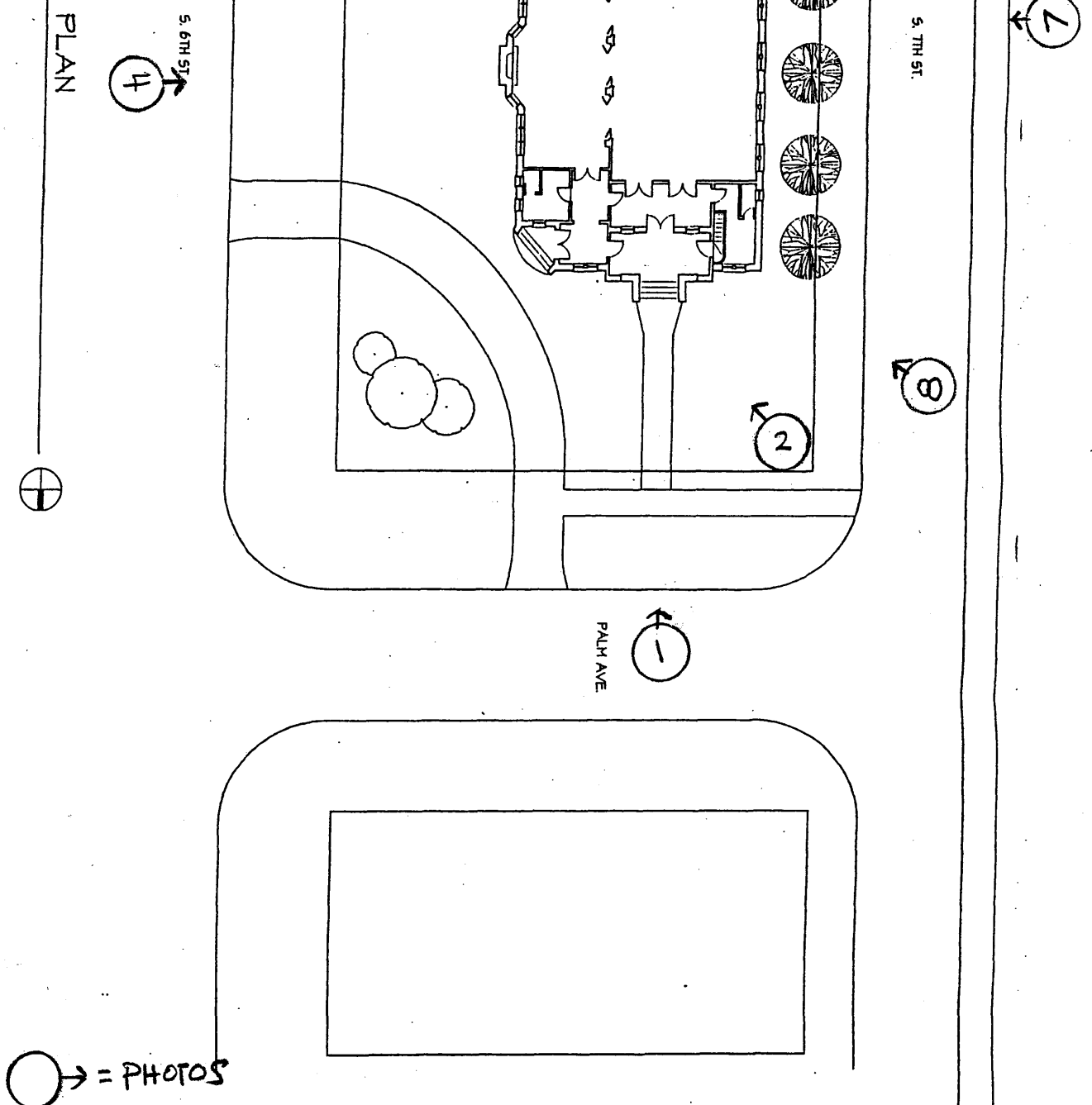
7. Photo 20 of 21

6. Interior, Kitchen, Looking Southeast

7. Photo 21 of 21

(A) EXISTING SITE PLAN

SCALE: 1" = 20'



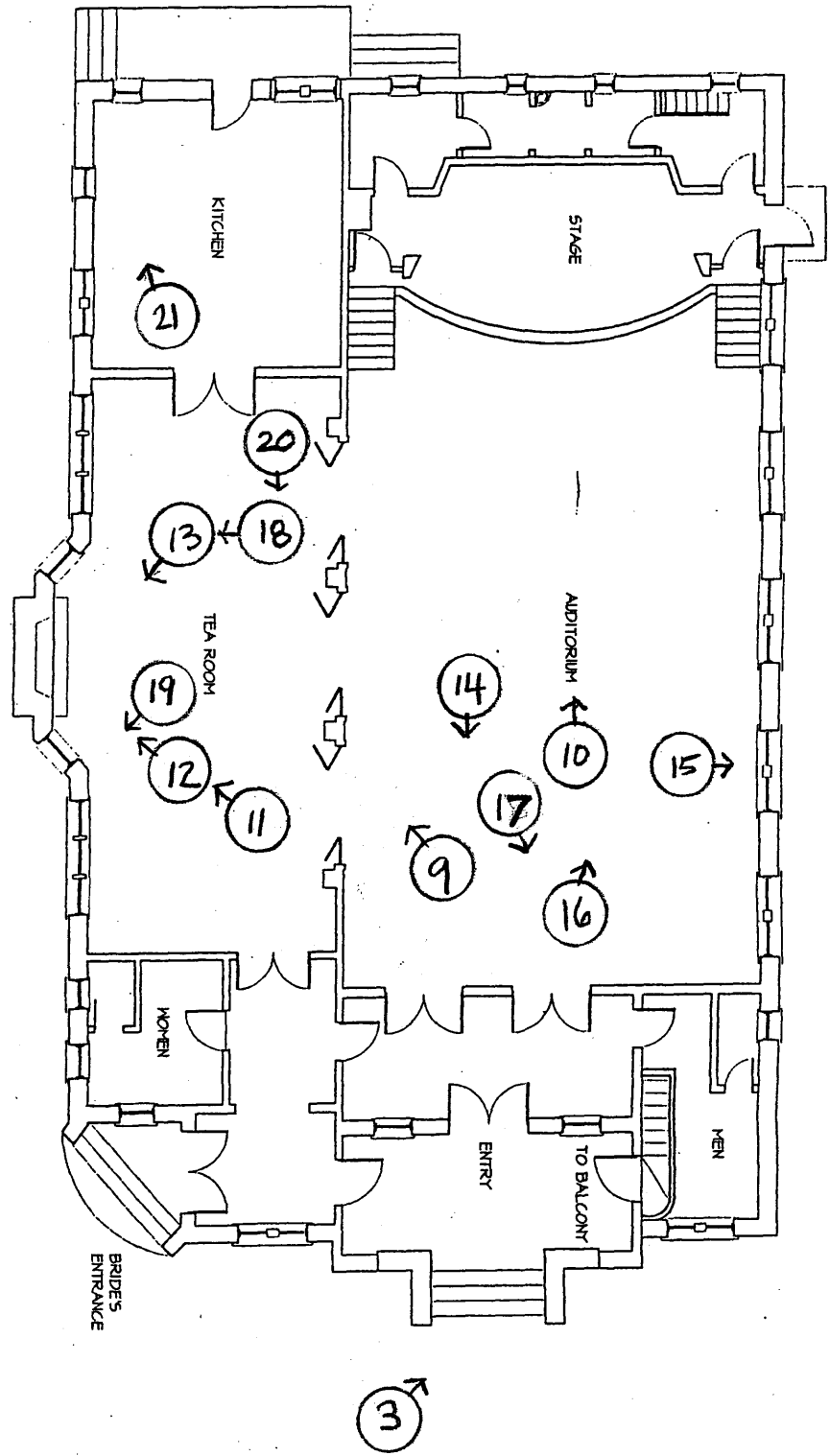
○ → = PHOTOS

DATE
NOV. 28, 2000
SHEET A1

DADE CITY WOMAN'S CLUB
DADE CITY, FLORIDA

JAN ABELL KENNETH GARCIA PARTNERSHIP
A R C H I T E C T S
2201 DEKLE AVENUE • TAMPA • FLORIDA 33606
TEL. (813) 251-3652 • FAX. (813) 254-4935

(A) BUILDING PLAN- AS BUILT
 SCALE: 1/8" = 1'



○ → = PHOTOS

DATE
 NOV. 29, 2000
 SHEET A2

DADE CITY WOMAN'S CLUB
 DADE CITY, FLORIDA

JAN ABELL KENNETH GARCIA PARTNERSHIP
 ARCHITECTS
 2201 DEKLE AVENUE • TAMPA • FLORIDA 33606
 TEL. (813) 251-3652 • FAX. (813) 254-4935